



孕龍科技股份有限公司
ZEROPLUS TECHNOLOGY CO.,LTD

Instrument Business Department

CCIR656 Specification

Version : V1.0

Content

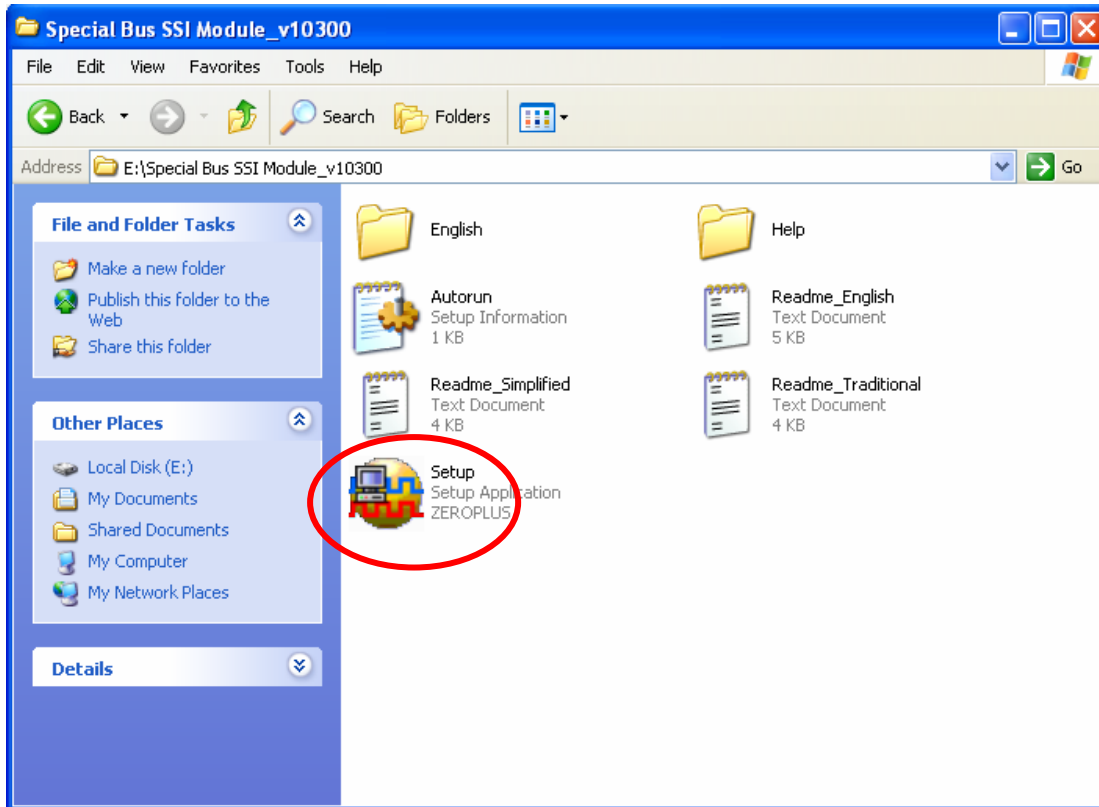
1	Software Installation	3
2	User Interface	7
3	Operating Instructions	9

1 Software Installation

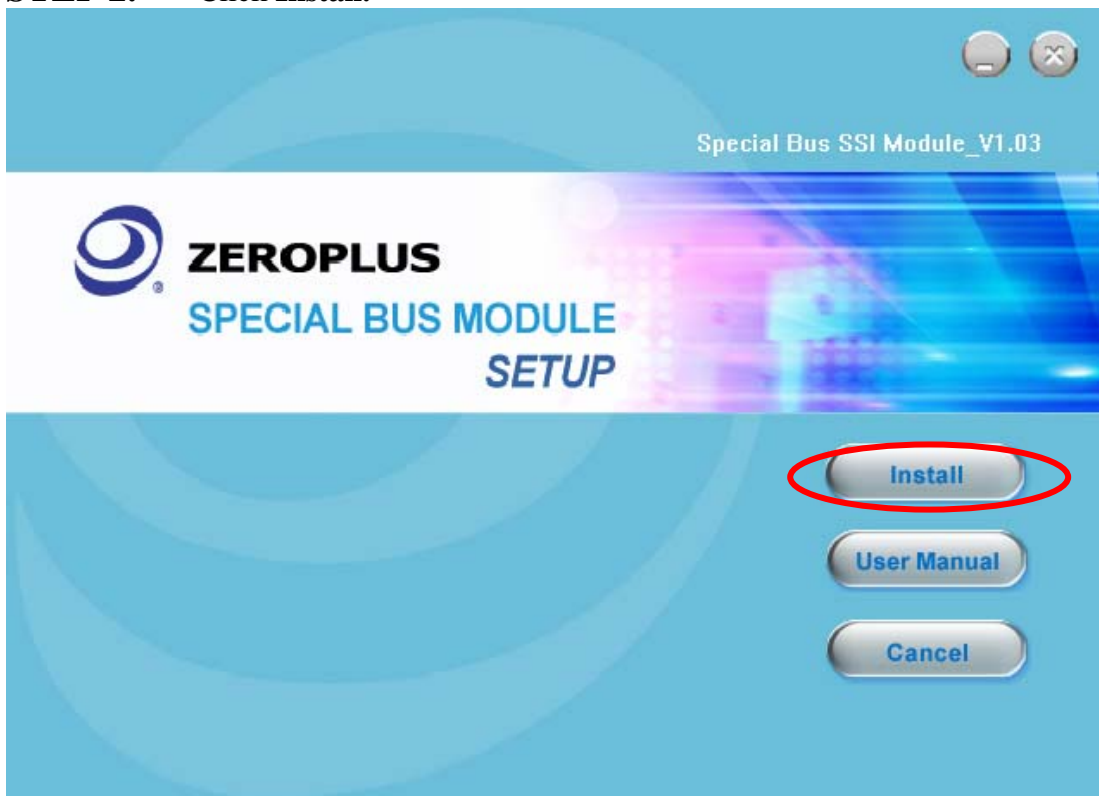
Please as the following steps to install the software:

※ Remark: The installation steps for all buses are the same; you can complete installation by following procedures. The below is an example to install SSI bus.

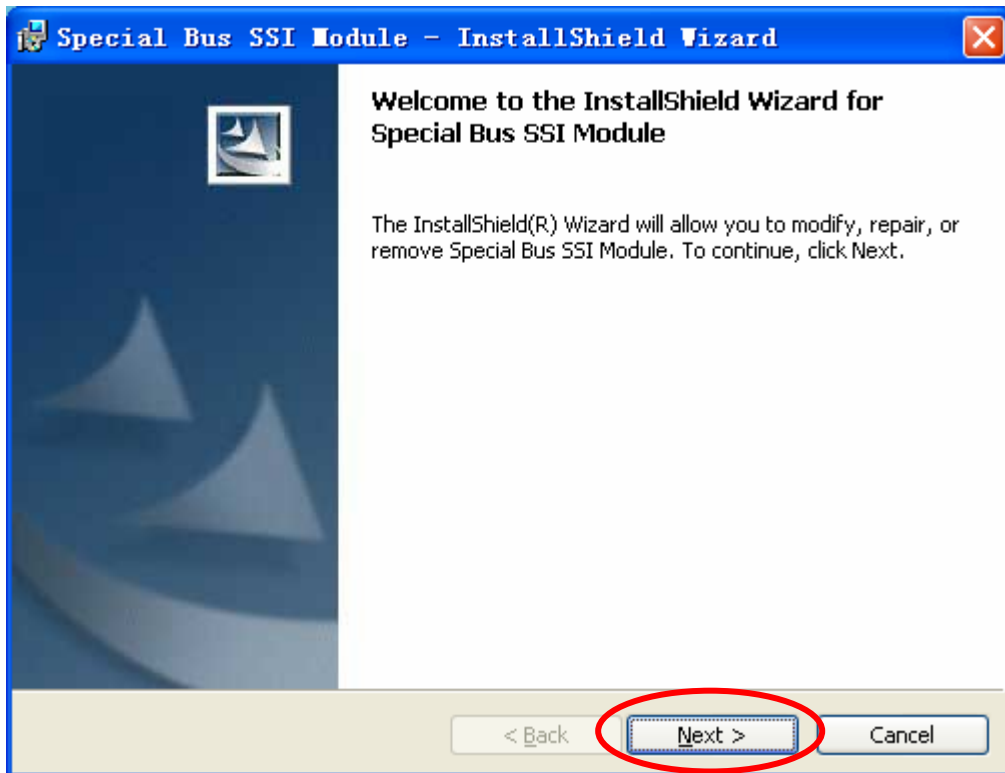
STEP 1. Install Bus Module



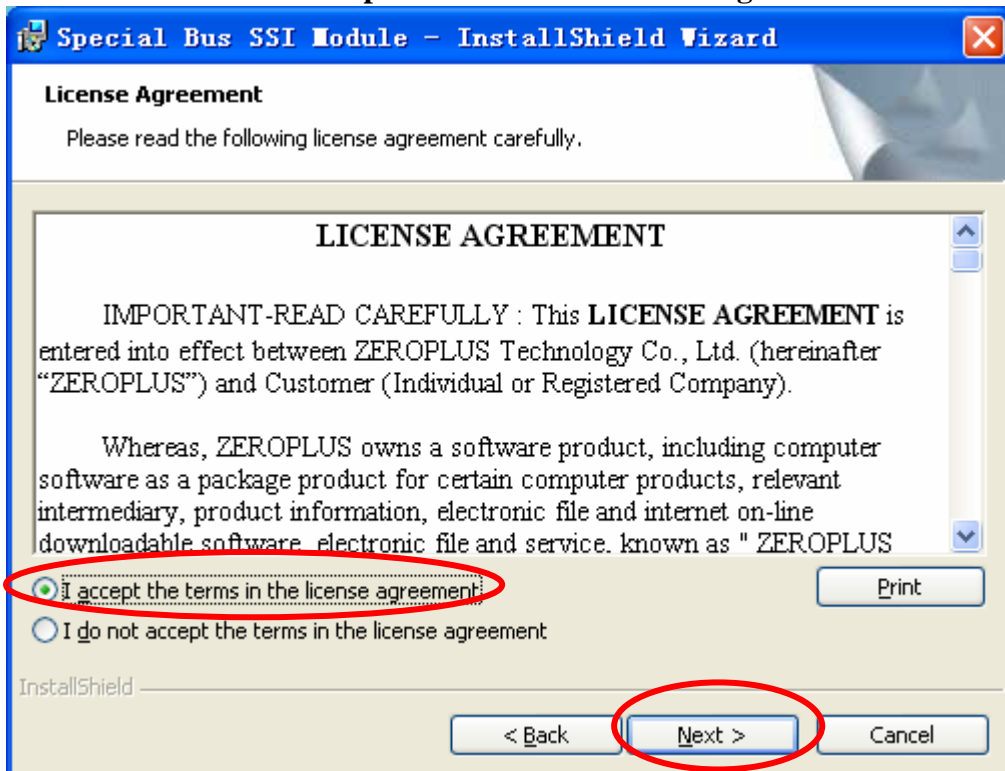
STEP 2. Click Install.



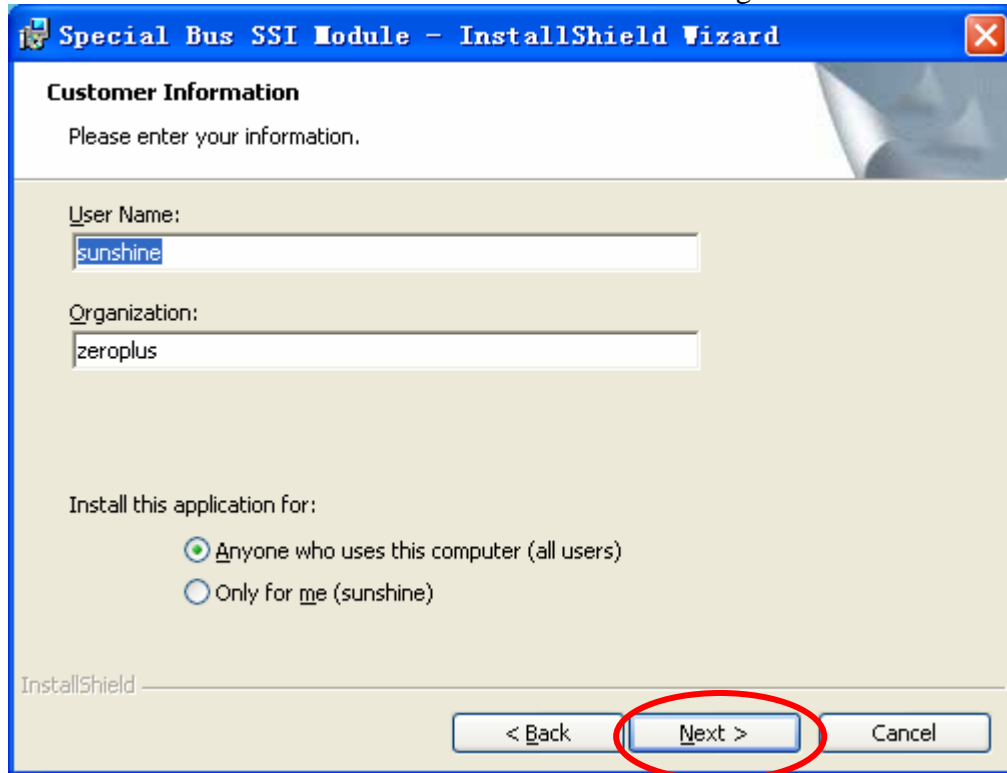
STEP 3. Click Next.



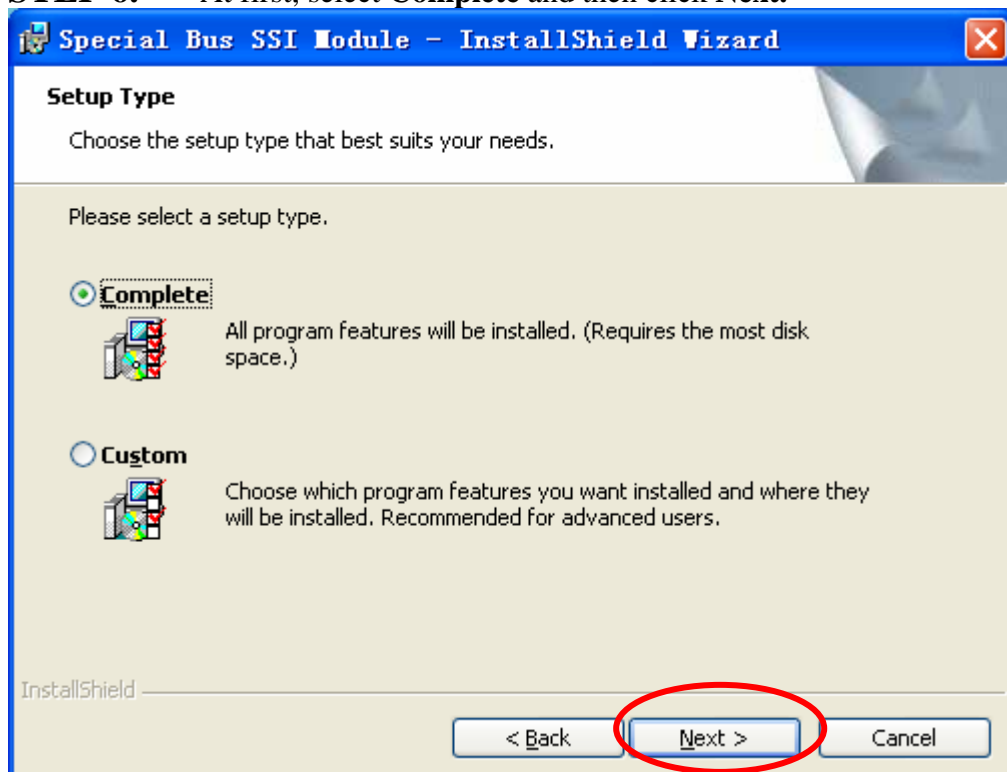
STEP 4. Select I accept the terms in the license agreement, and then press Next.



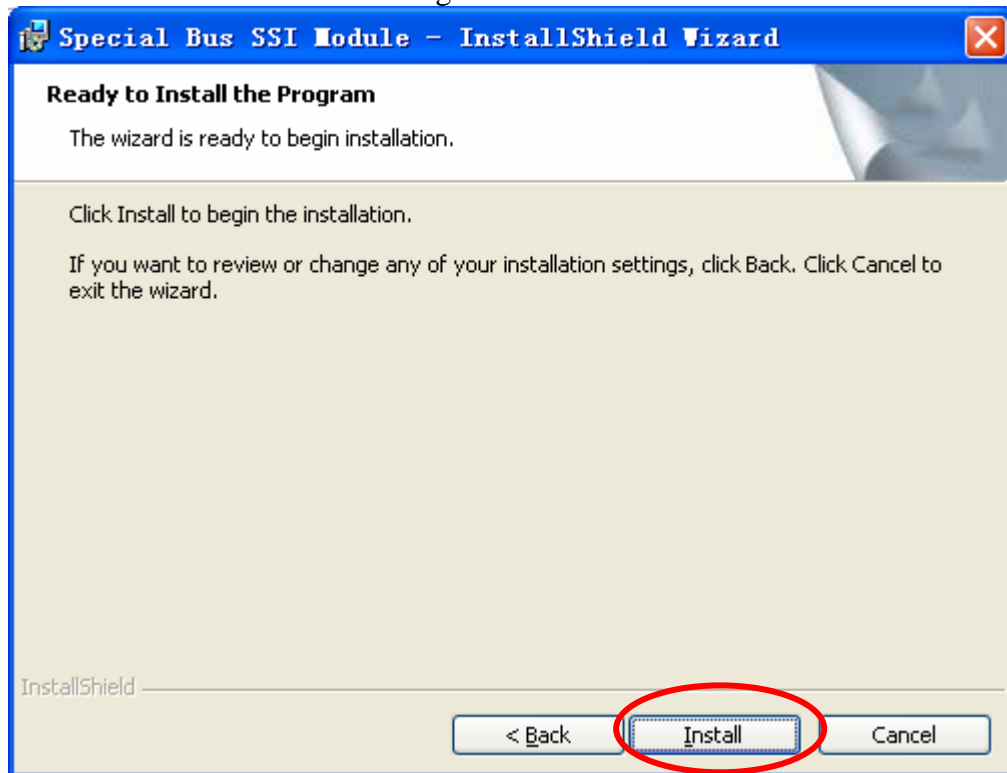
STEP 5. Fill in user information in the below dialog box and click **Next**.



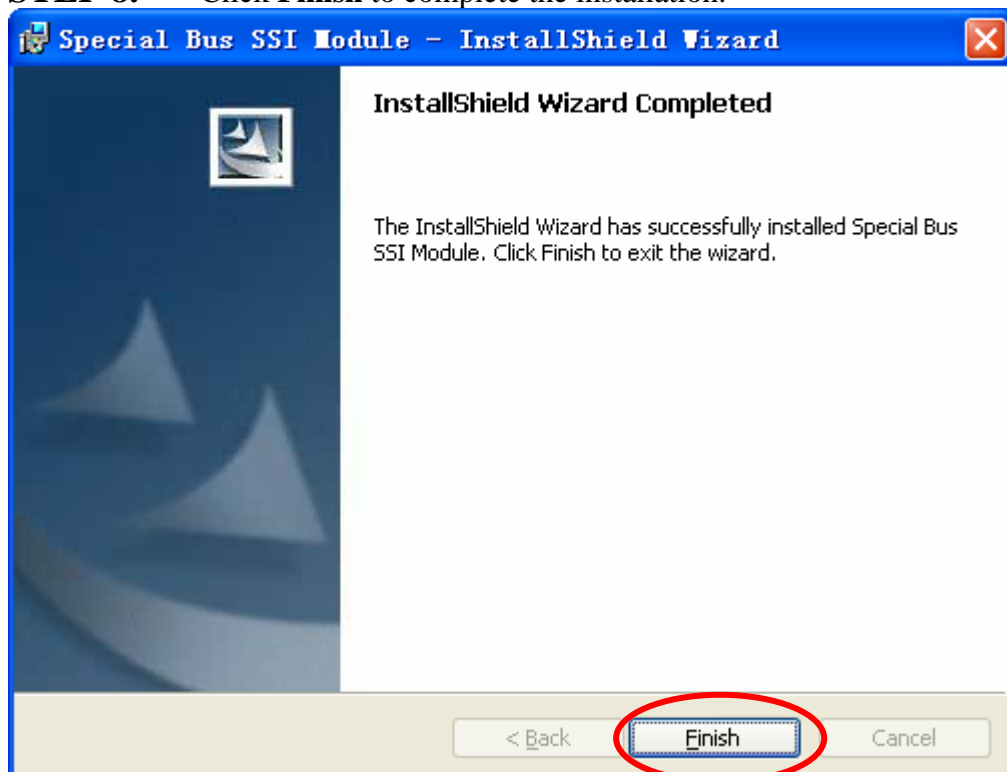
STEP 6. At first, select **Complete** and then click **Next**.



STEP 7. Click **Install** to begin the installation.



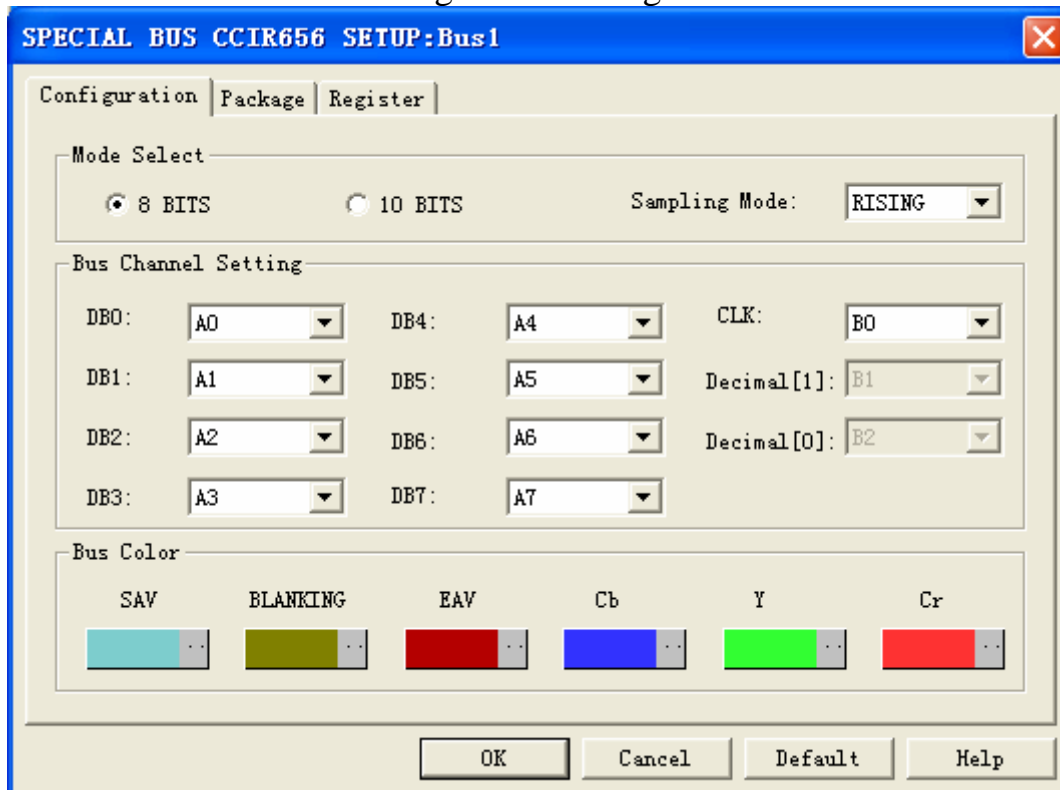
STEP 8. Click **Finish** to complete the installation.



2 User Interface

Please refer to the below images to select options of setting **CCIR656 MODULE**.

CCIR656 MODULE Configuration dialog box



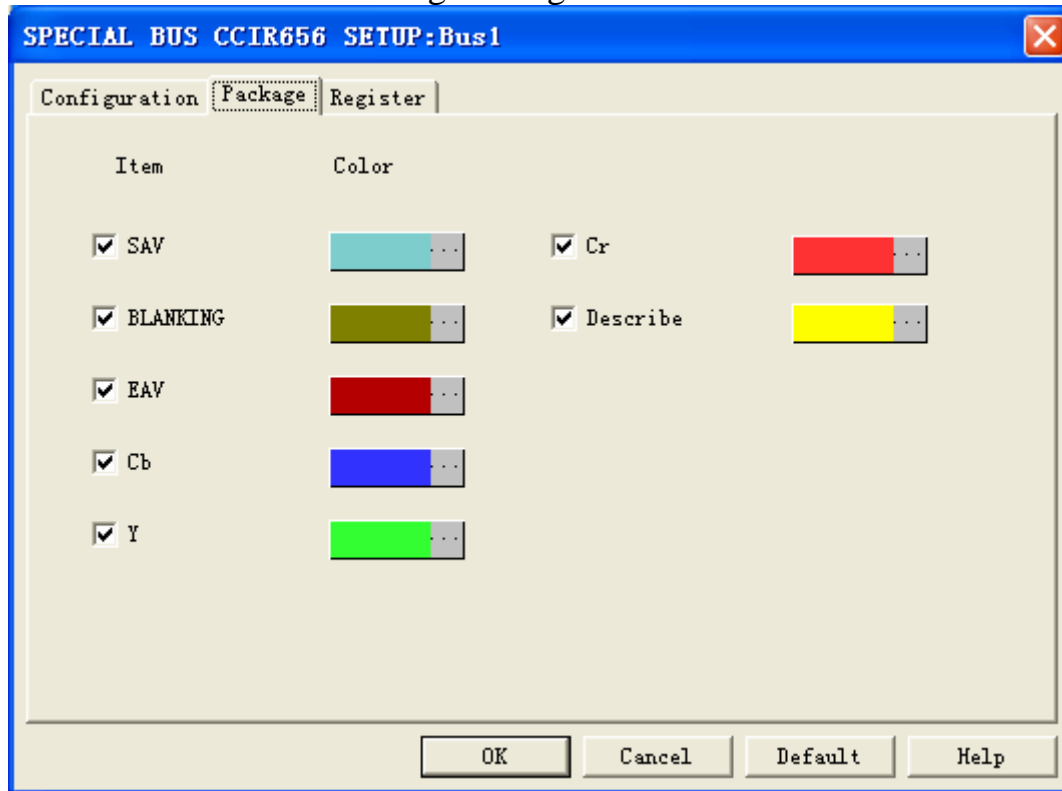
CCIR656 Mode Select:There are two mode options for CCIR656: 8 BITS and 10BITS ,you can select one as you requirements.The default is 8 BITS.

Sampling Mode:The sampling mode is set at CLOCK rising edge or falling edge

CCIR656 Bus Channel Settings:Because CCIR656 has two modes: 8BITS and 10BIT,when you select 8BITS Mode,there are 8 data lines from DB0 to DB7 and one CLK line,when you select 10BITS Mode,there adds additional two decimal lines.

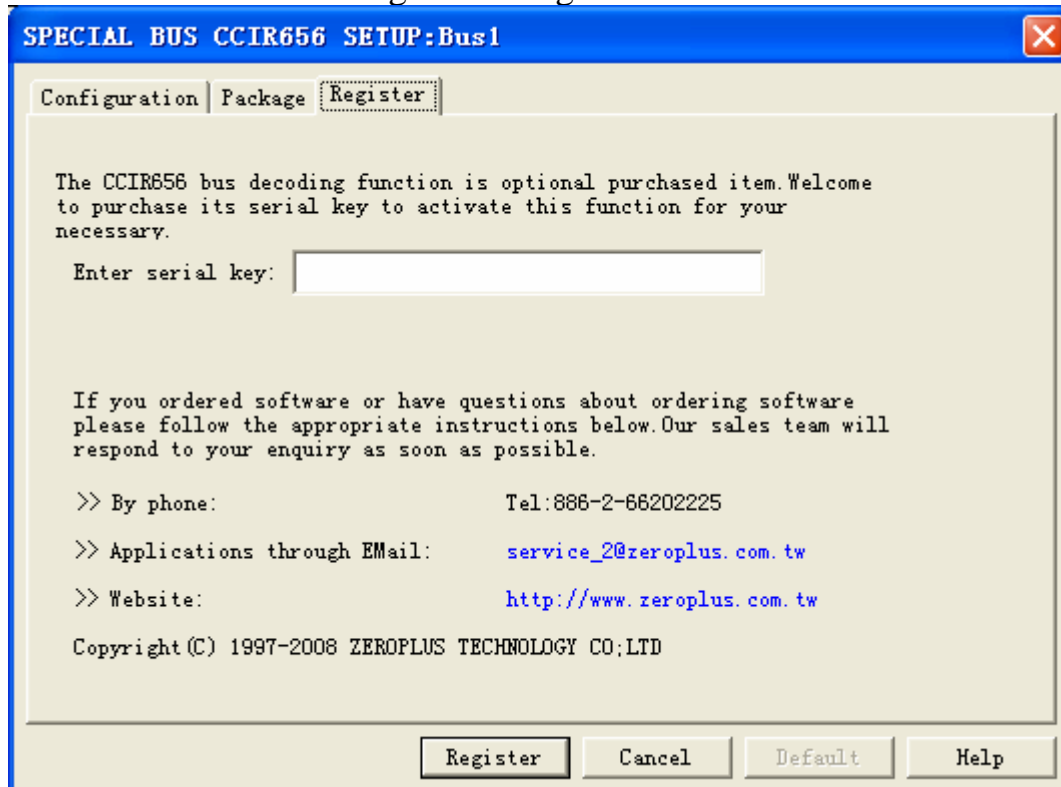
Bus Color Settings:In order to recongize the package items,the items are displayed in different colors,thereinto,the error package is displayed red.

CCIR656 MODULE Package dialog box



In the package dialog, user can vary the color of items.

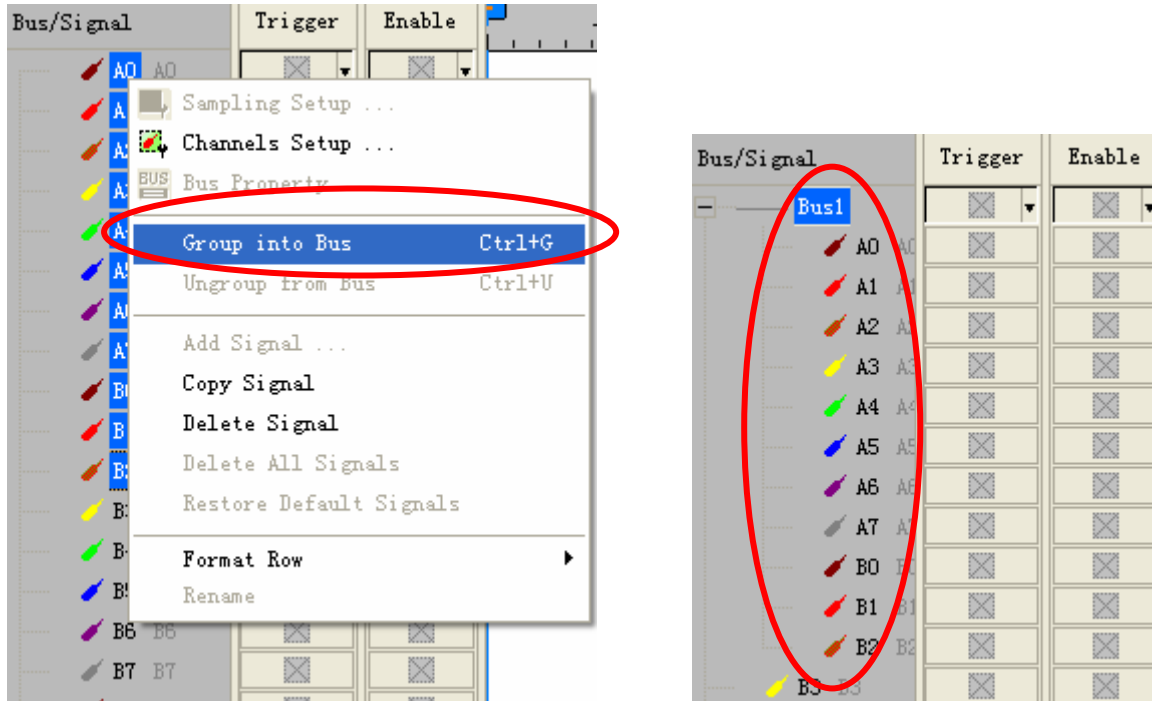
CCIR656 MODULE Register dialog box



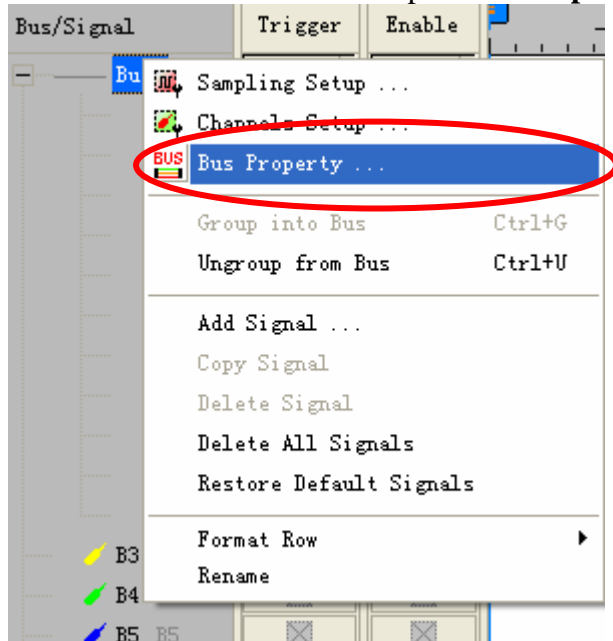
There is Zeroplus company information. If you have any questions about software Operations, you can contact Zeroplus by Telephone or Email.

3 Operating Instructions

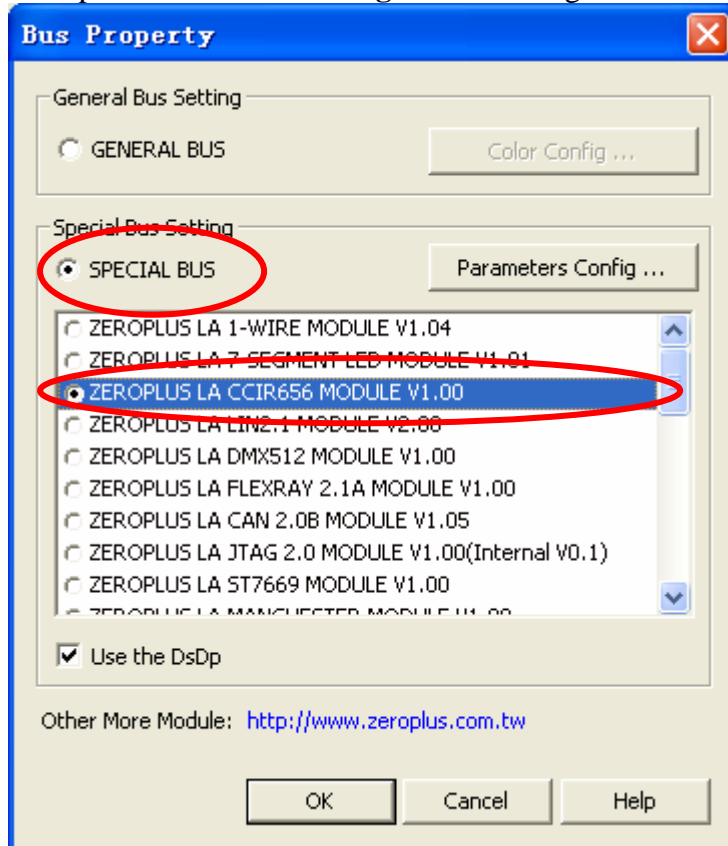
STEP 1. At first, group the unanalyzed channels into **bus1** by pressing the **Right Key** on mouse.



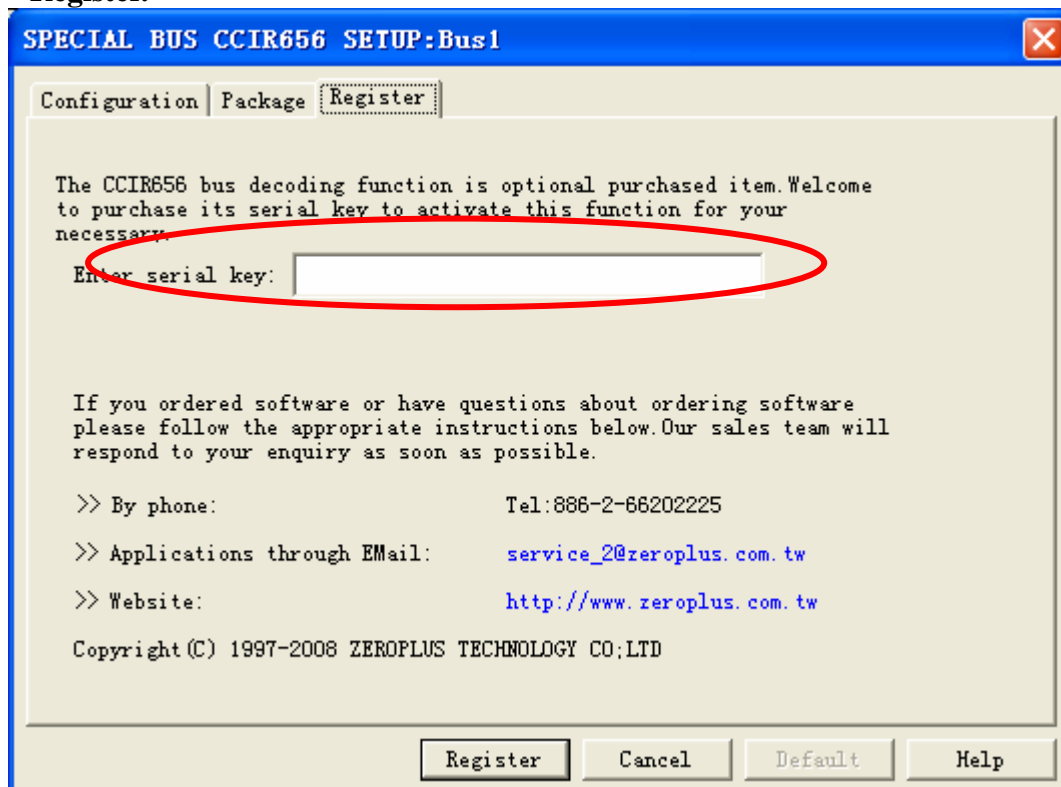
STEP 2. Select **Bus1**, then press **Right key** on mouse to list menu, then press **Bus Property** or **Bus bar** on the toolbar to open **Bus Property** dialog box.



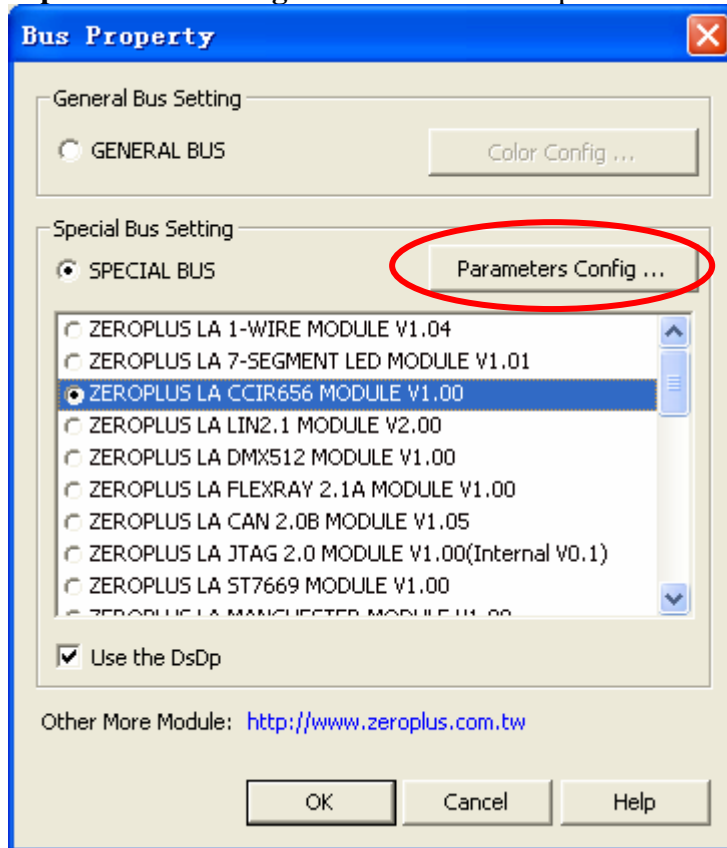
STEP 3. For Special Bus CCIR656 Parameters Configuration, select Special Bus, and then choose **ZEROPLUS LA CCIR656 MODULE V1.00**. Next click **Parameters Configuration** to open **Parameters Configuration** dialog box.



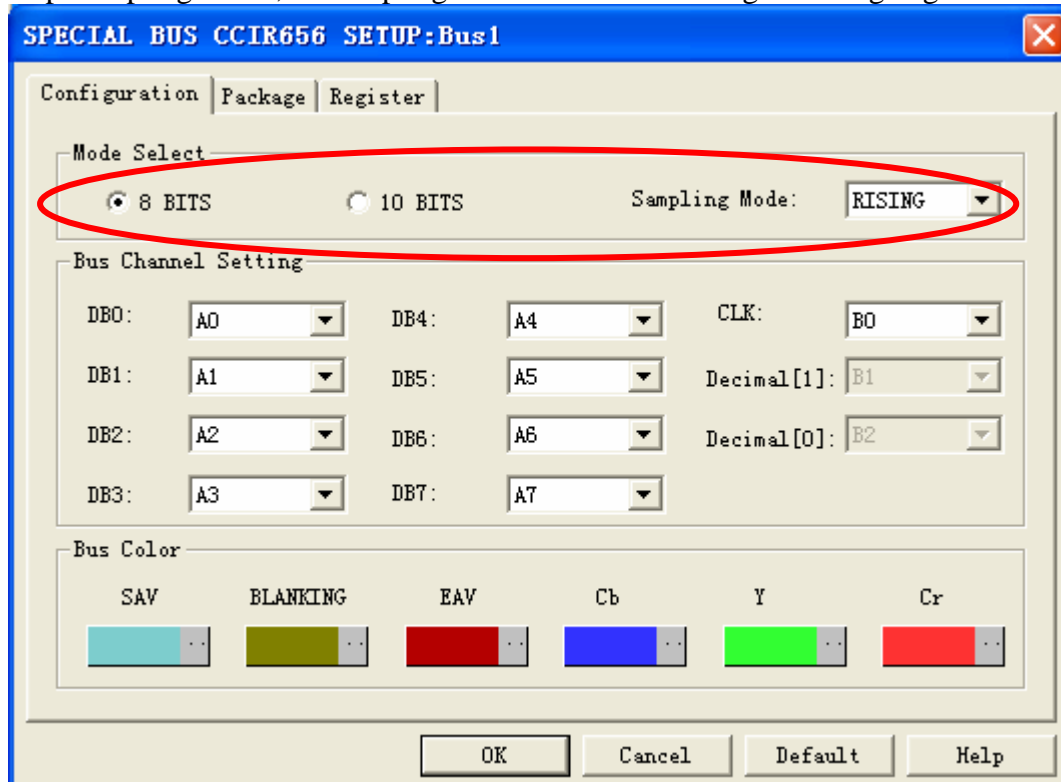
STEP 4. Press Register tab to type the serial key number of logic analyzer. Then, press **Register**.



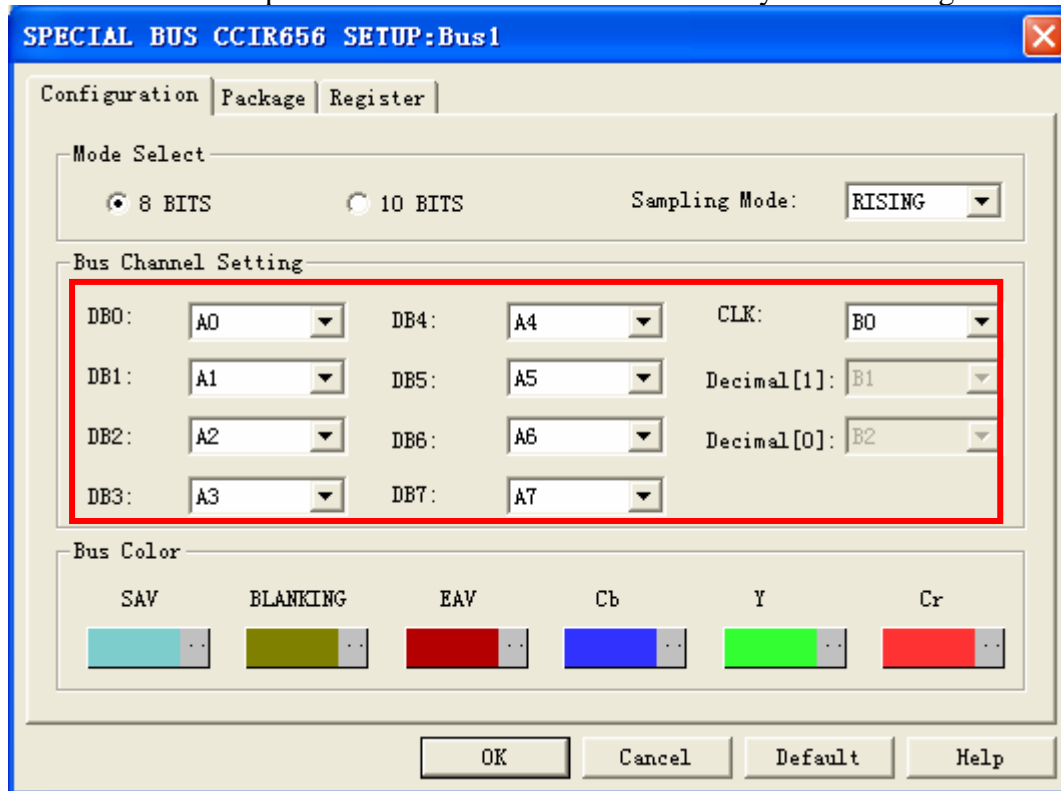
STEP 5. After completing **Register**, it turns to the **Bus Property** dialog box, then click the **parameters configuration** to start the Special Bus CCIR656 setup.



STEP 6. Set up the Mode Select for CCIR656, there are two mode to be selected, and then set up Sampling Mode, the sampling mode is set at the rising or falling edge of CLOCK.

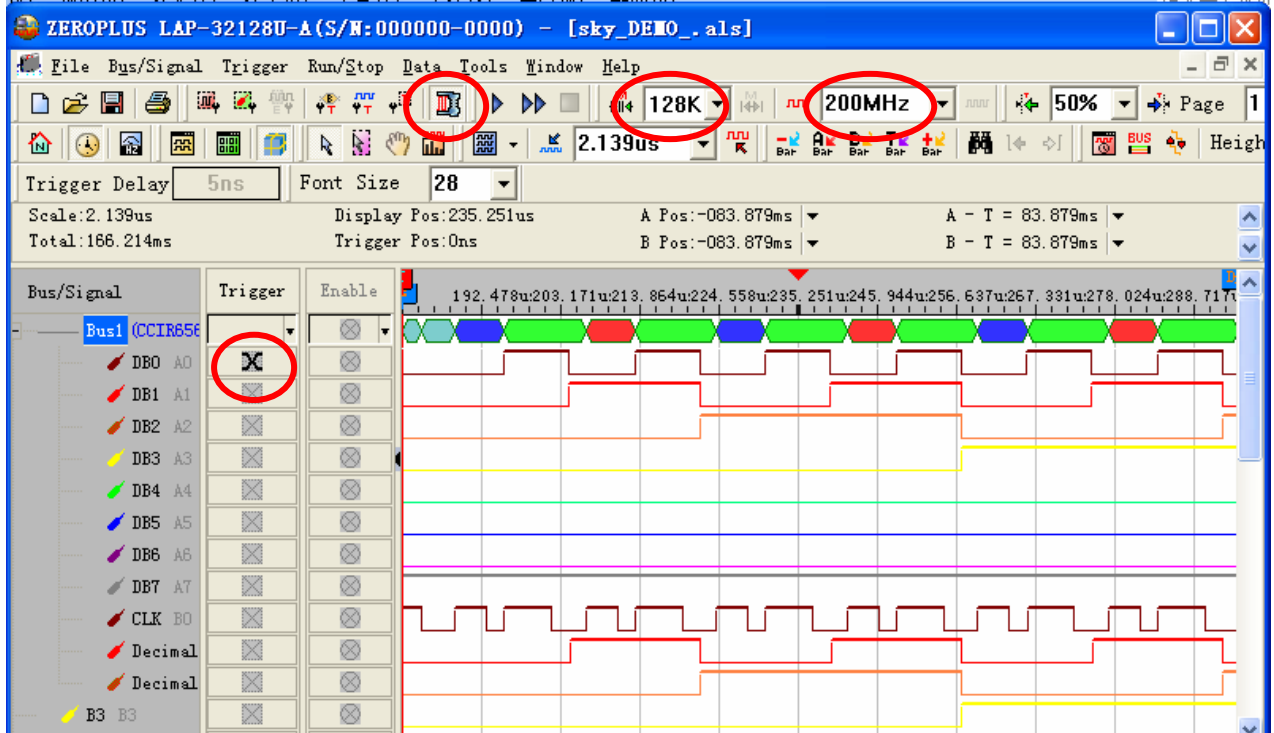


STEP 7. Set up the channels for **CCIR656** module by the following mode.



STEP 8. Following pictures show that the completion of the Bus decoding and package list. The conditions are set as Memory depth is 128K, Sampling frequency is 200MHz.If the compression mode is activated,the logic analyzer can capture more data.

Bus Decoding



Package List

