



孕龍科技股份有限公司
ZEROPLUS TECHNOLOGY CO.,LTD

Instrument Business Department

FLEXRAY2.1A Specification

Version: V1.0

Content

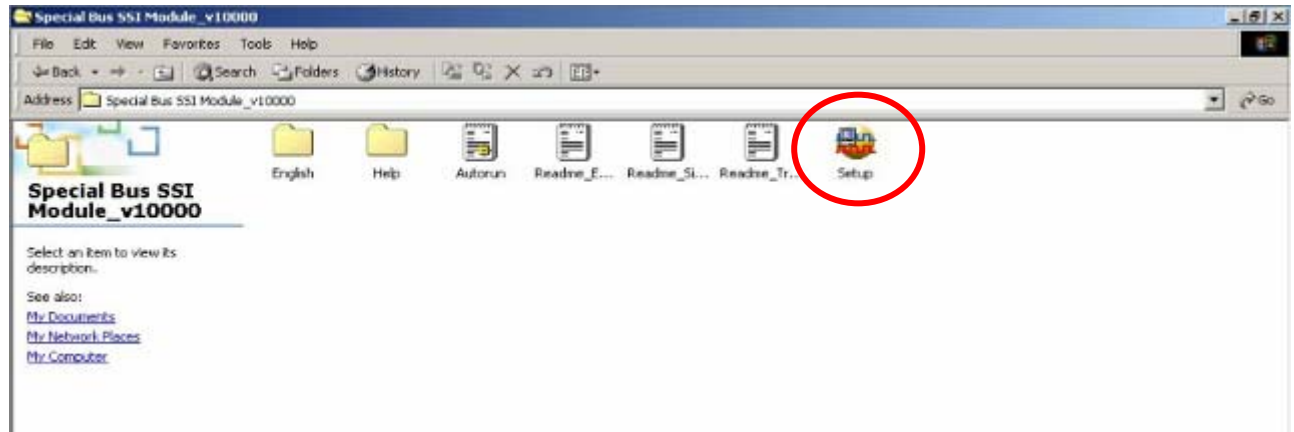
1	Software Installation.....	3
2	User Interface	7
3	Operating Instructions.....	9

1 Software Installation

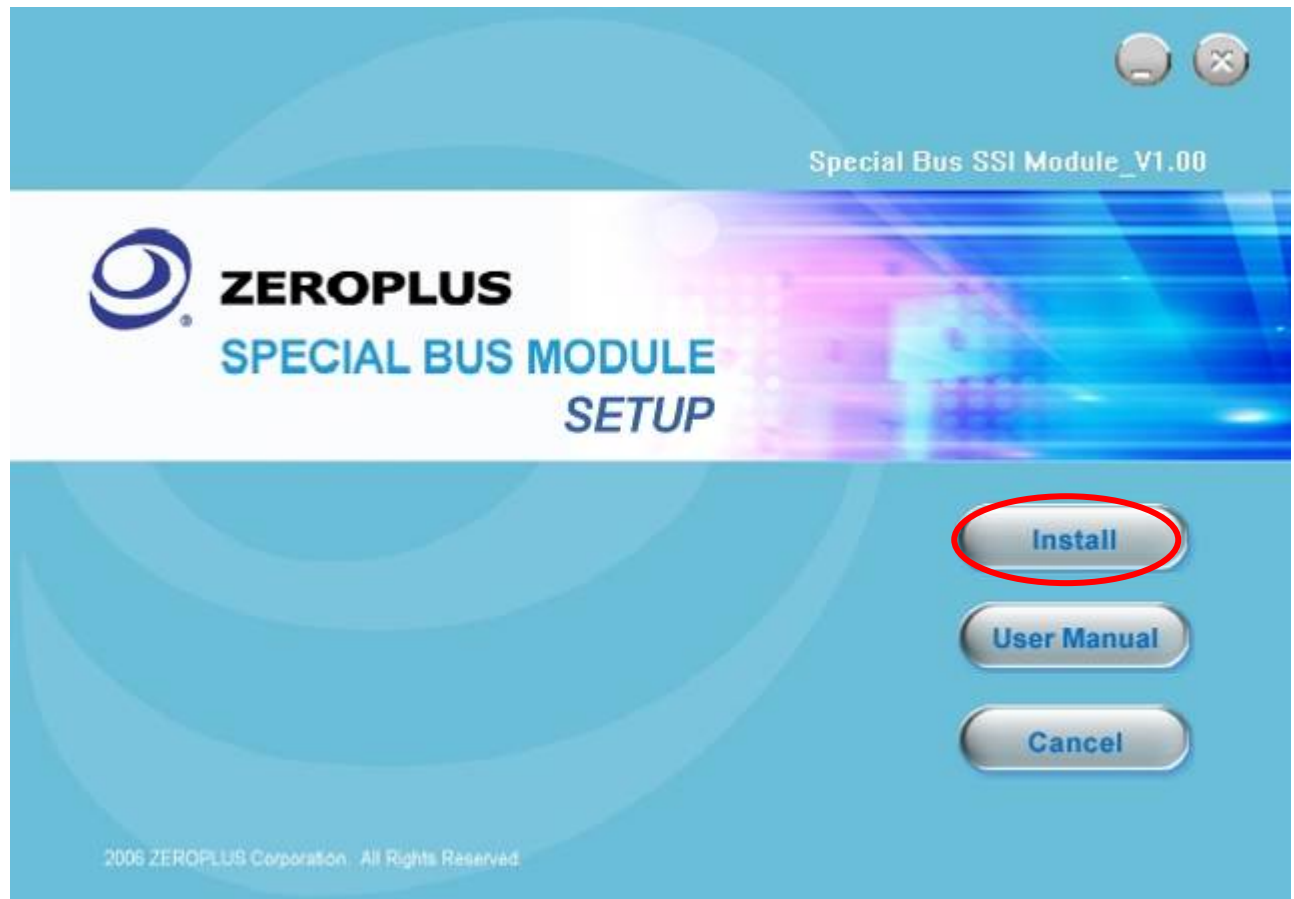
Please follow below steps to install the software:

※ Remarks: The installation steps for all buses are the same; you can complete installation as following procedures. The below is an example to install SSI bus

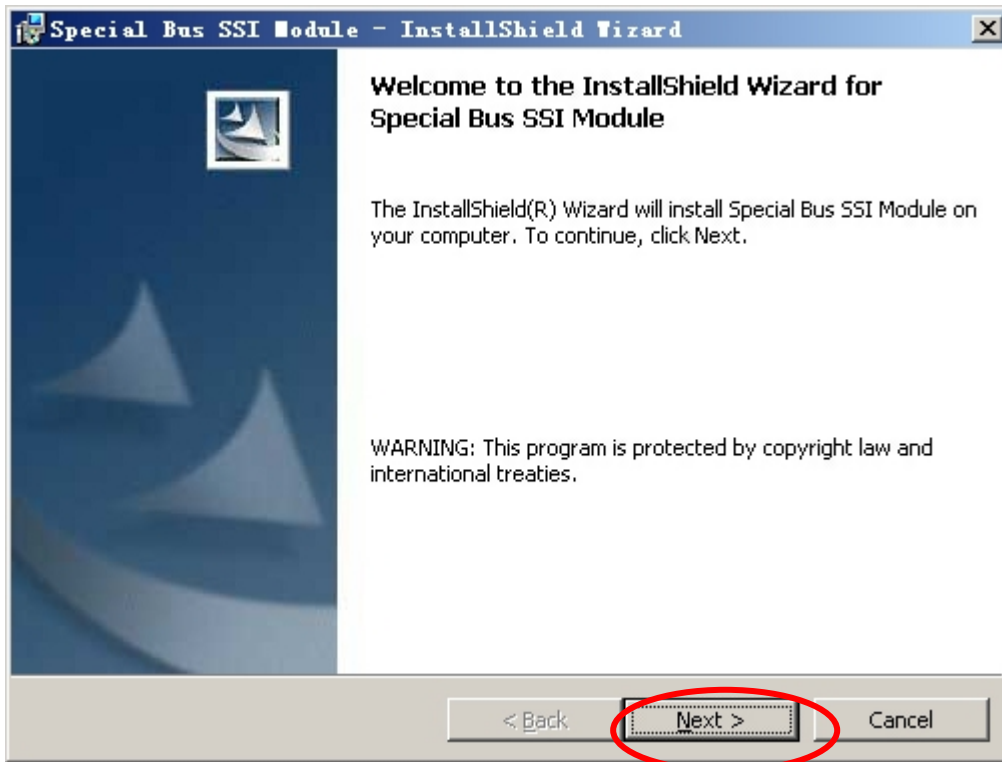
STEP1. Install Bus Module .



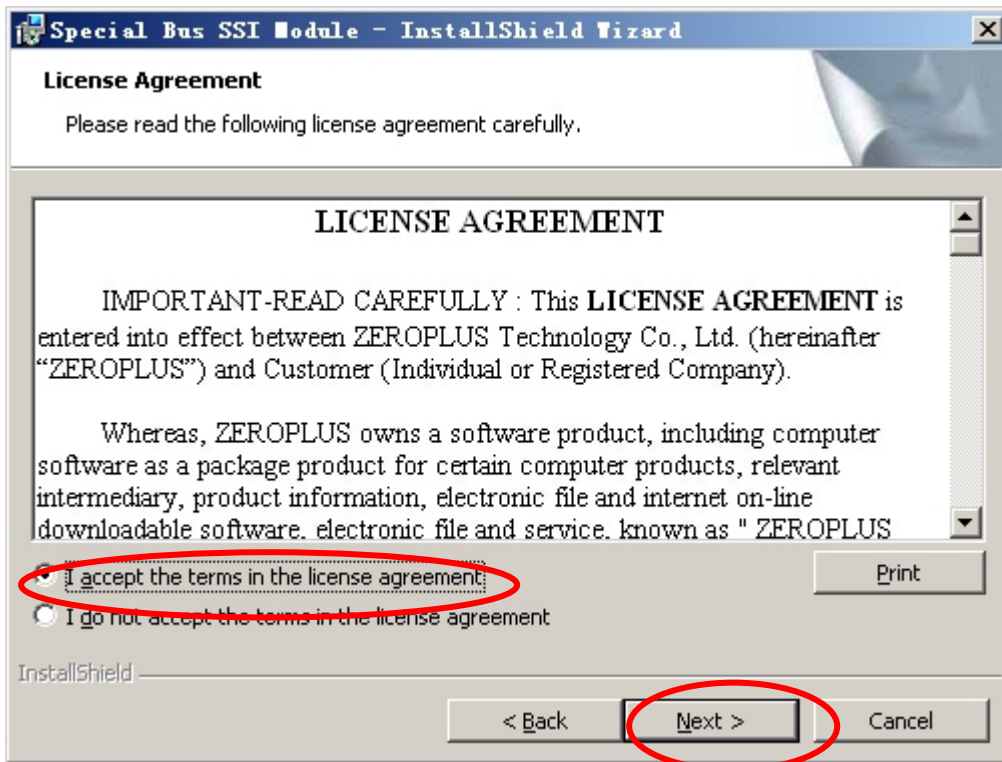
STEP 2. Click Install.



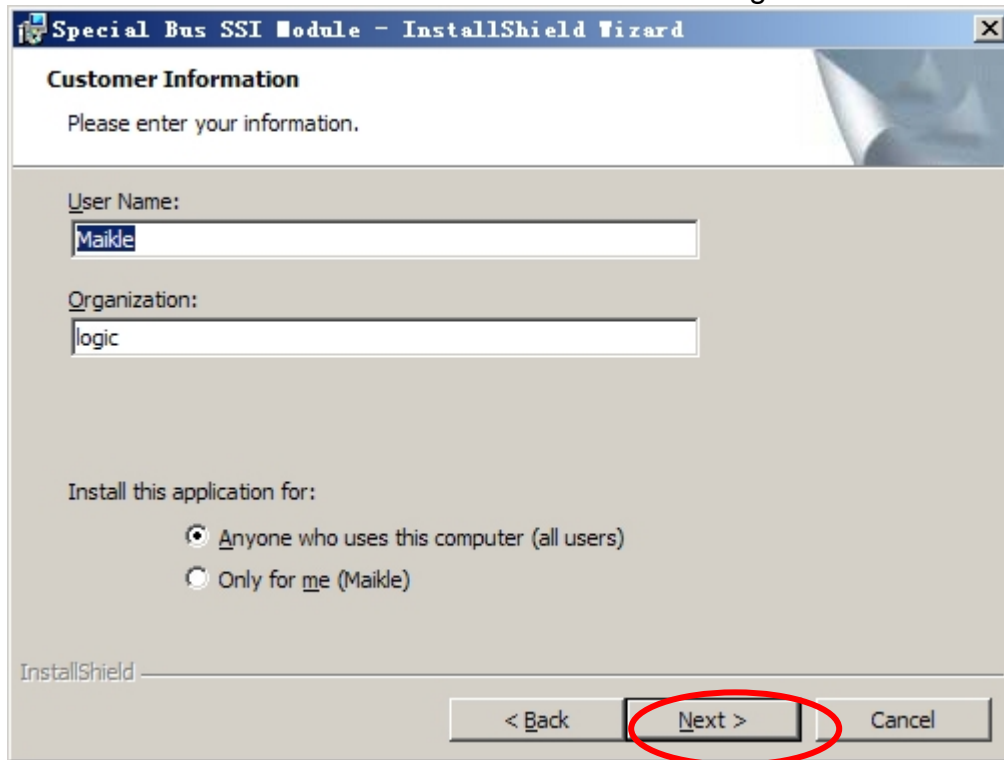
STEP 3. Click Next.



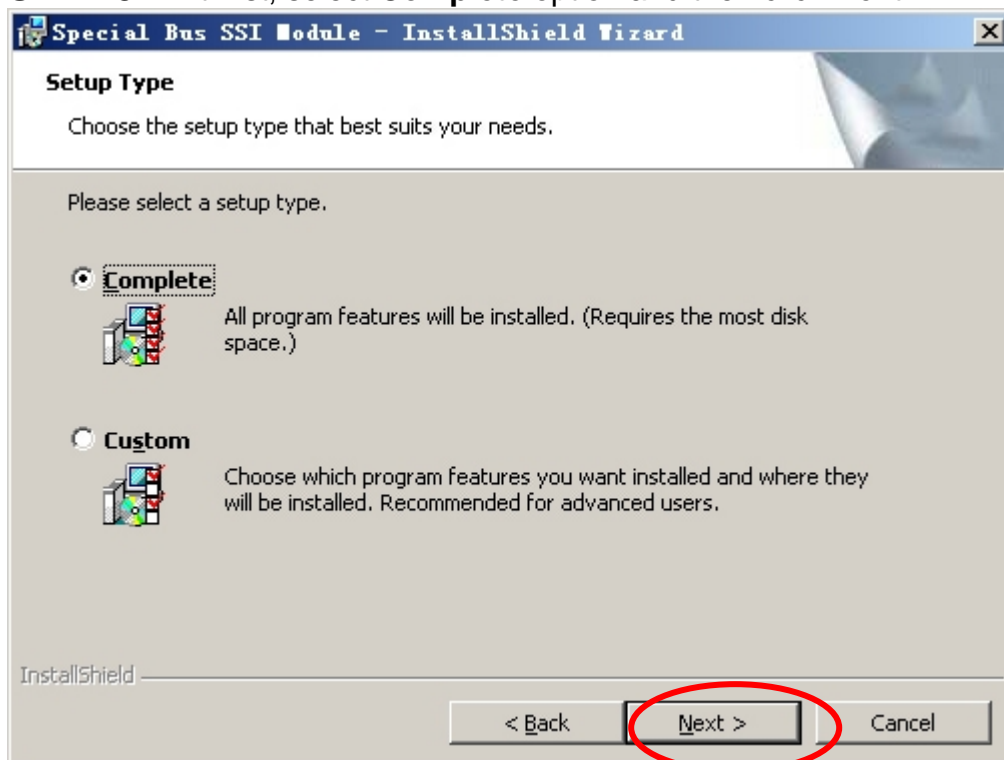
STEP 4. Select I accept the terms in the license agreement option, and then press Next.



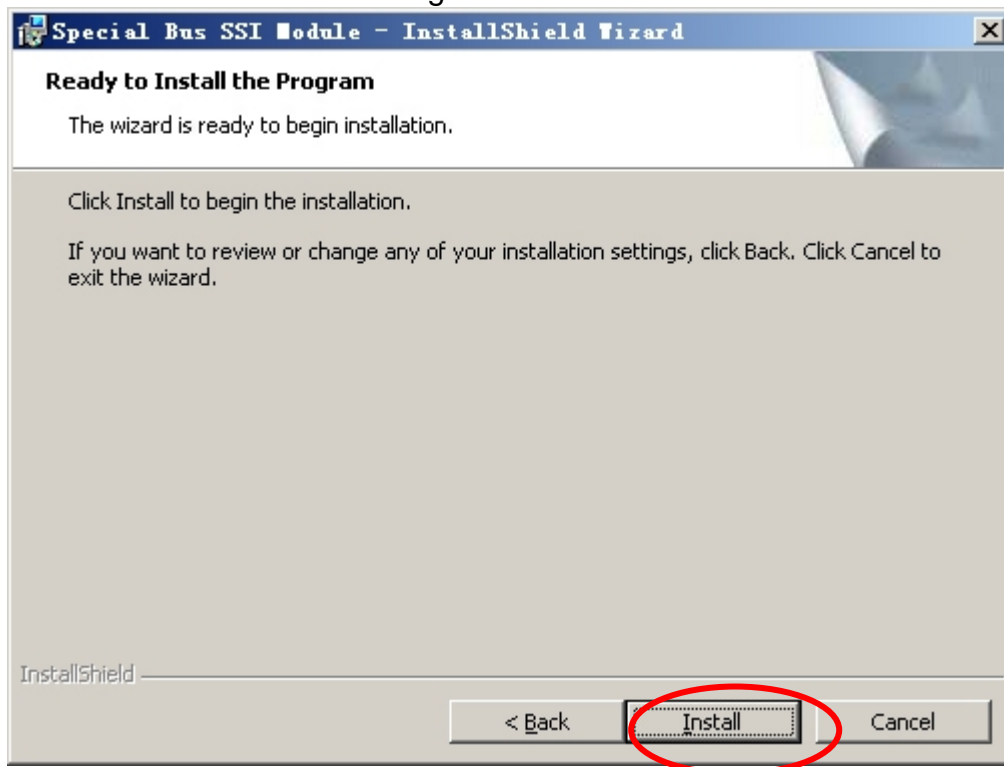
STEP 5. Fill in user information in the below dialog box and click **Next**.



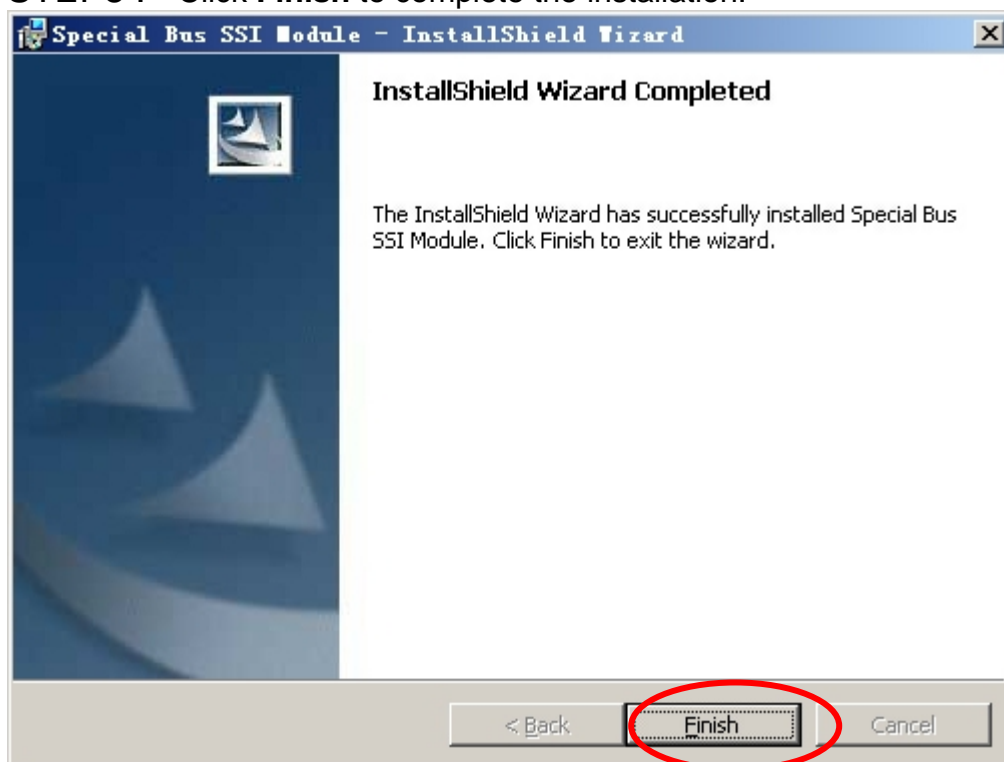
STEP 6. At first, select **Complete** option and then click **Next**.



STEP 7. Click **Install** to begin the installation.



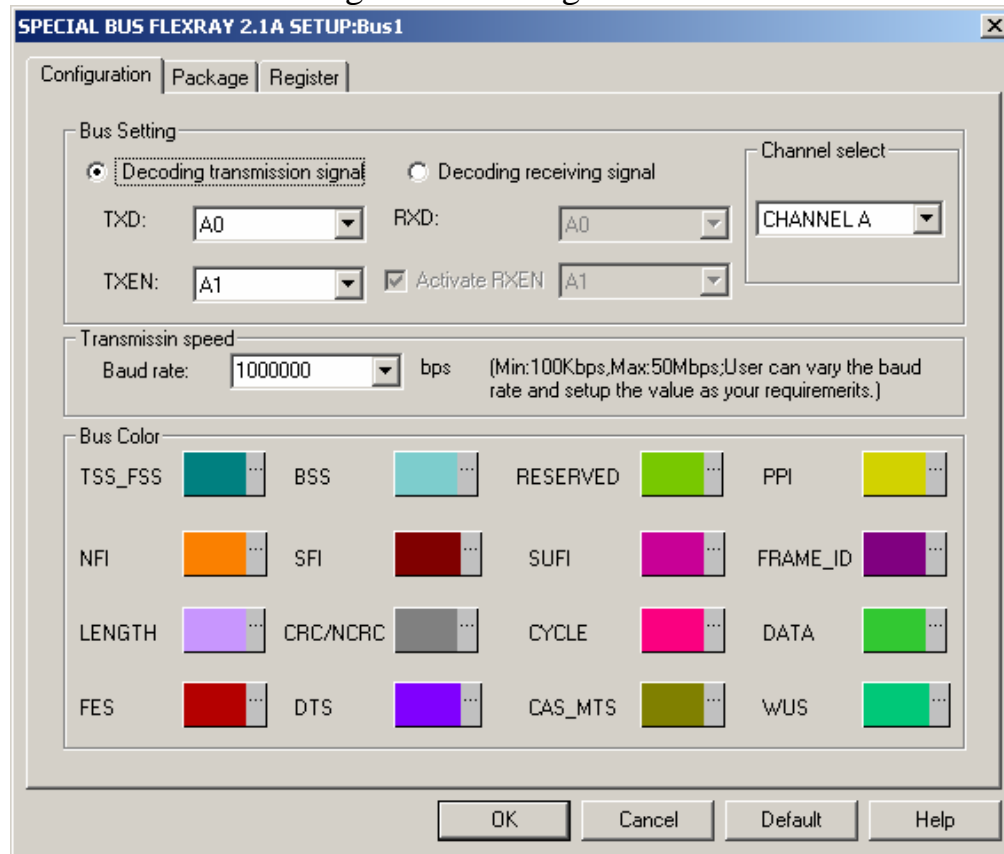
STEP8 . Click **Finish** to complete the installation.



2. User Interface

Please refer to below images to select options of setting **FLEXRAY2.1A MODULE**.

FLEXRAY2.1A Configuration Dialog Box



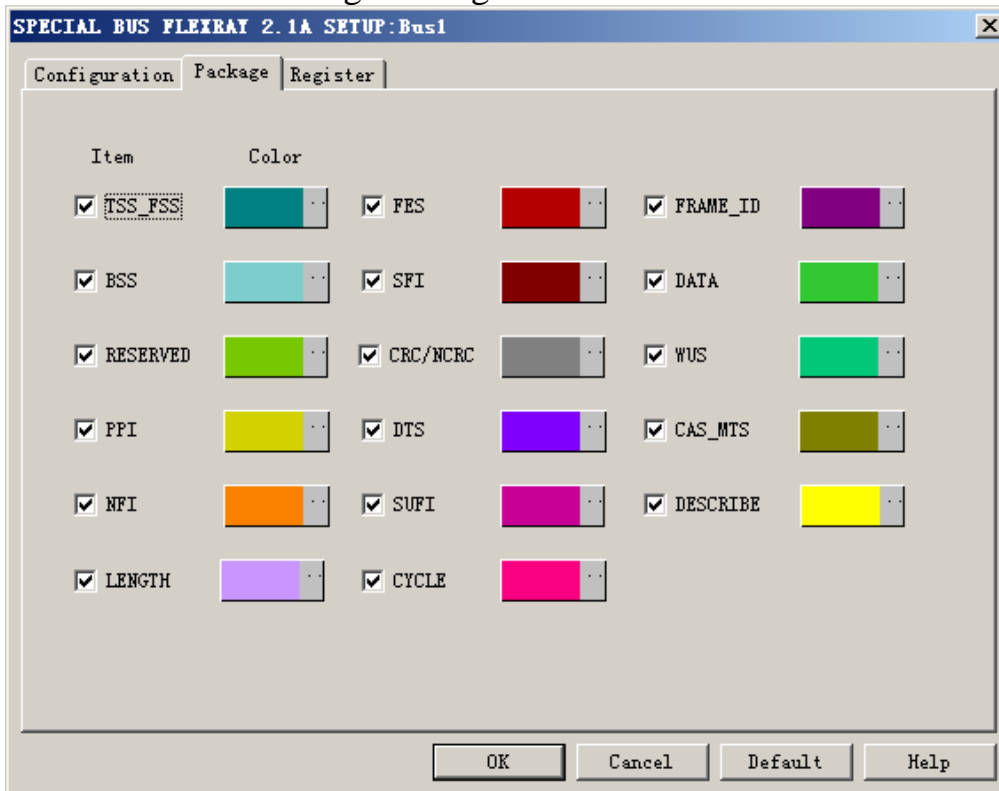
FLEXRAY2.1A Bus Settings :

TXD is the transmission signal line ,TXEN is the transmission ENABLE line (There is effectiveness on low level),RXD is the receiving signal line ,RXEN is the receiving ENABLE line .(There is effectiveness on low level),RXEN line is mostly designed in the interior of the transmission and receiving module ,and it can't transmit any data ,that's to say ,it is unnecessary to consider the RXEN line decoding during decoding process .The channel select is relative to the CRC initialization.

Transmission speed :

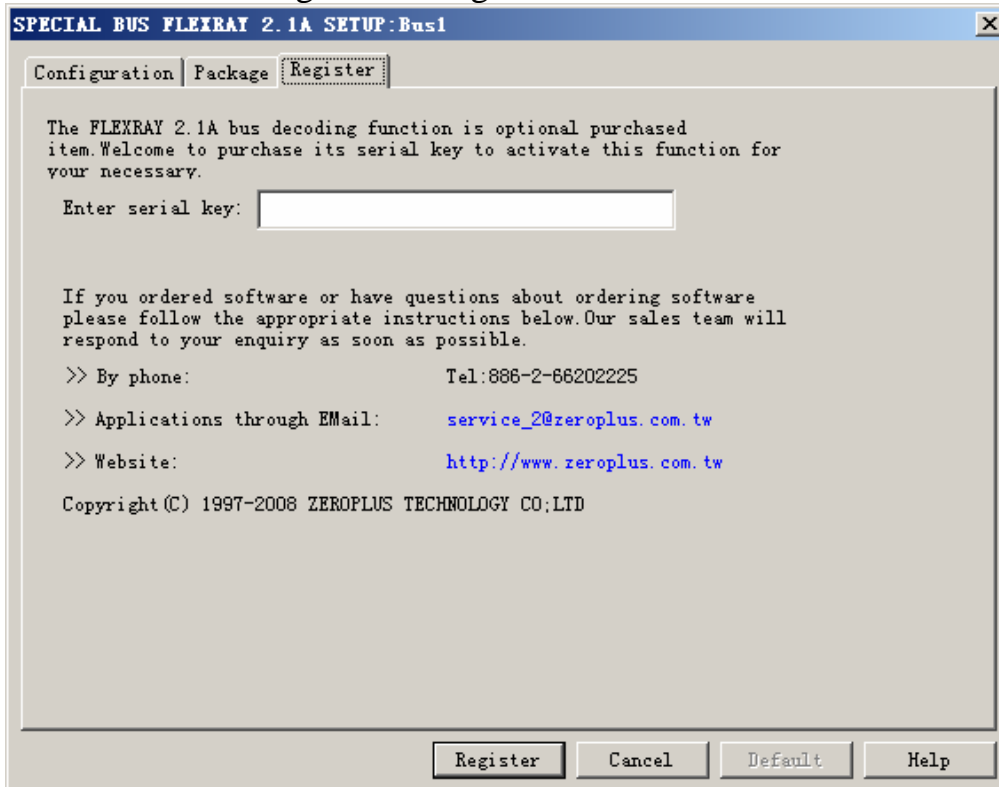
The baud rate is defaulted 1Mbps, user can select the value from its dropdown menu or enter a value within the range 100KbpsM ~ 50Mbps , The interzone of software is from100Kbps to 50Mbps , the values for selection is (1000000 、 2000000 、 4000000 、 6000000 、 8000000 、 10000000) bps.

FLEXRAY2.0A Package Dialog Box



In the package dialog, user can vary the color of items.

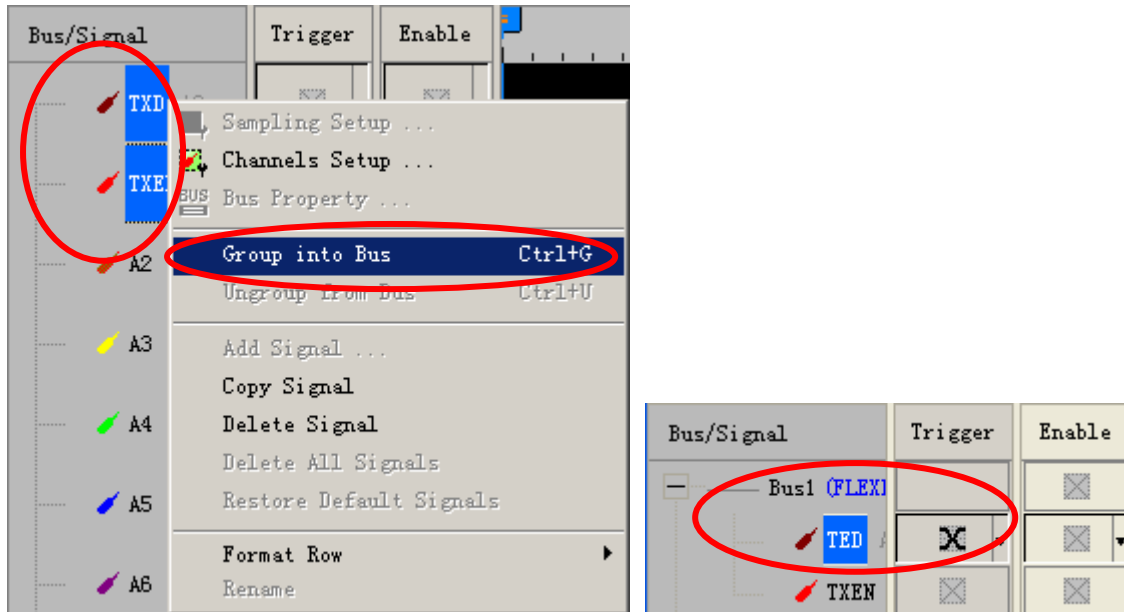
FLEXRAY2.1A Register Dialog Box.



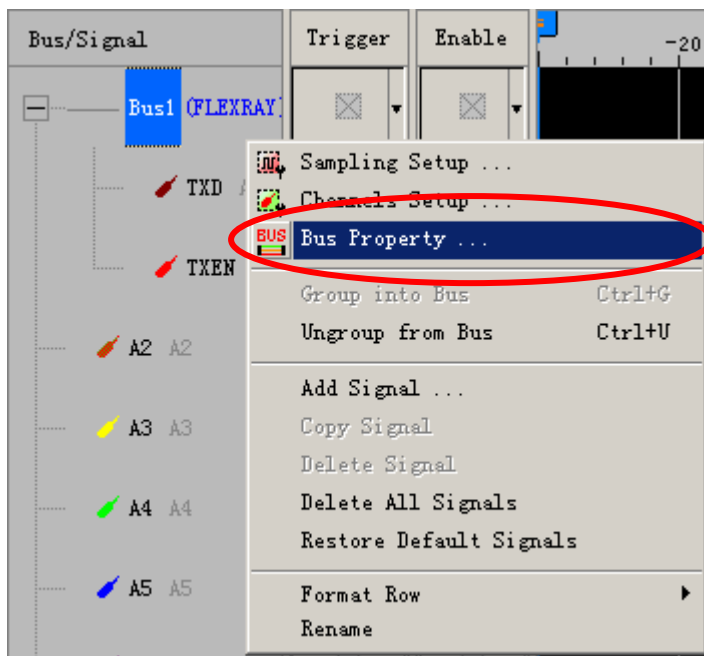
There is ZeroPlus company information. If you have any questions about software Operations, you can contact ZeroPlus by Telephone or Email.

3 Operating Instructions

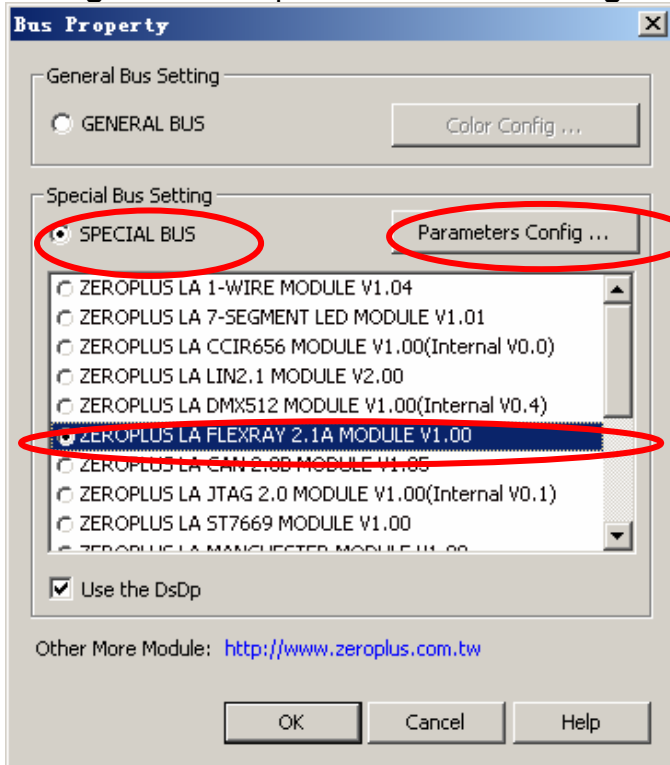
STEP 1. At first, group the unanalyzed channels into bus1 by pressing the **Right Key** on mouse.



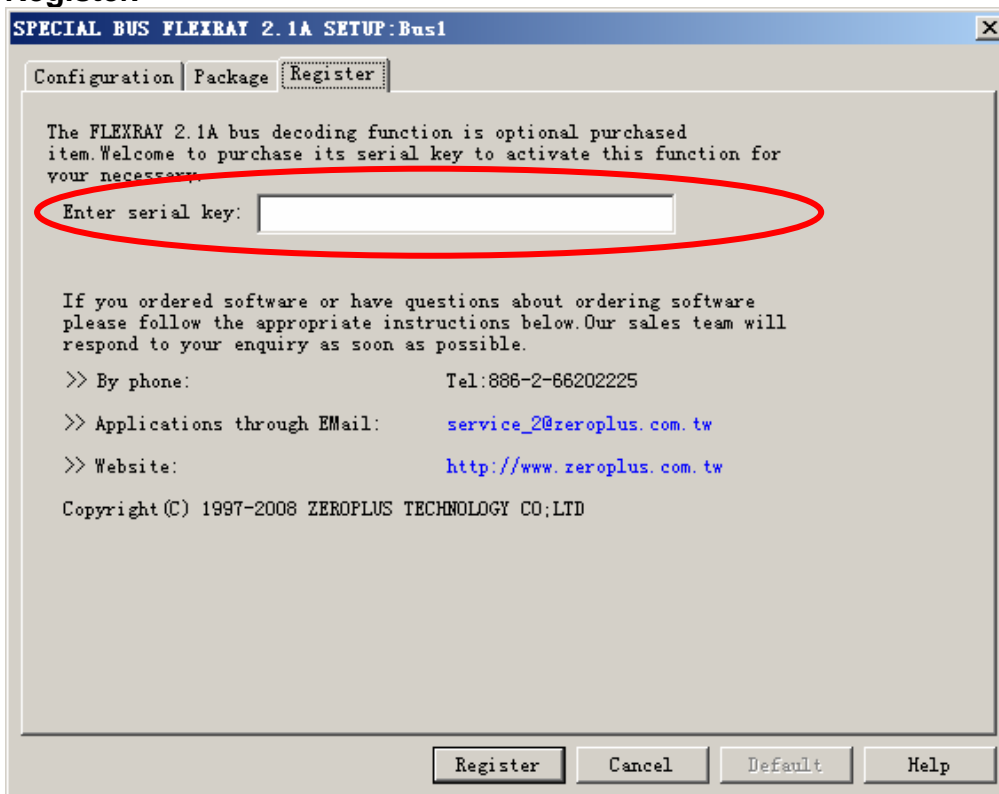
STEP 2. Select **Bus1**, then press **Right key** on mouse to list menu, then press **Bus Property** or **Bus** bar on the toolbar to open **Bus Property** dialog box.



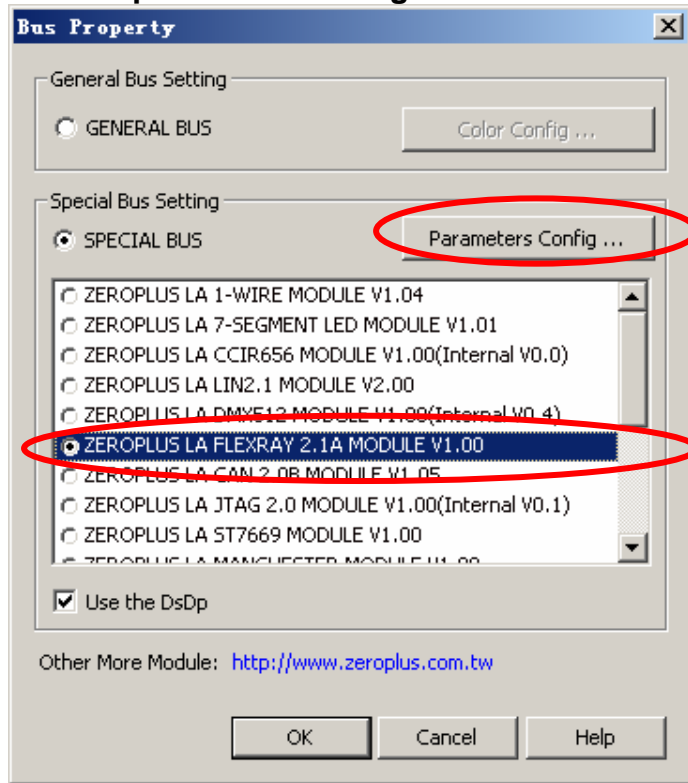
STEP 3. For Special Bus FLEXRAY2.1A Parameter Configuration, select Special Bus, and then choose **ZEROPLUS LA FLEXRAY2.1A MODULE V1.00** . Next click **Parameters Configuration** to open **Parameters Configuration** dialog box.



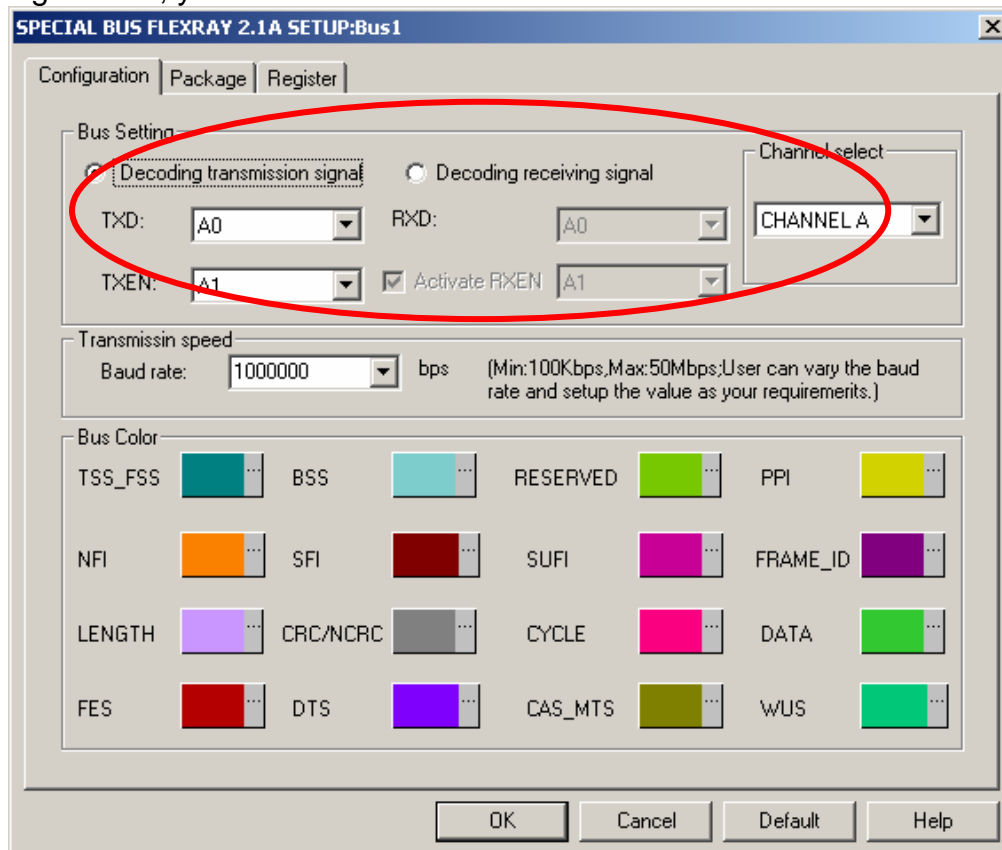
STEP 4. Press Register tab to type the serial key number of logic analyzer. Then, press **Register**.



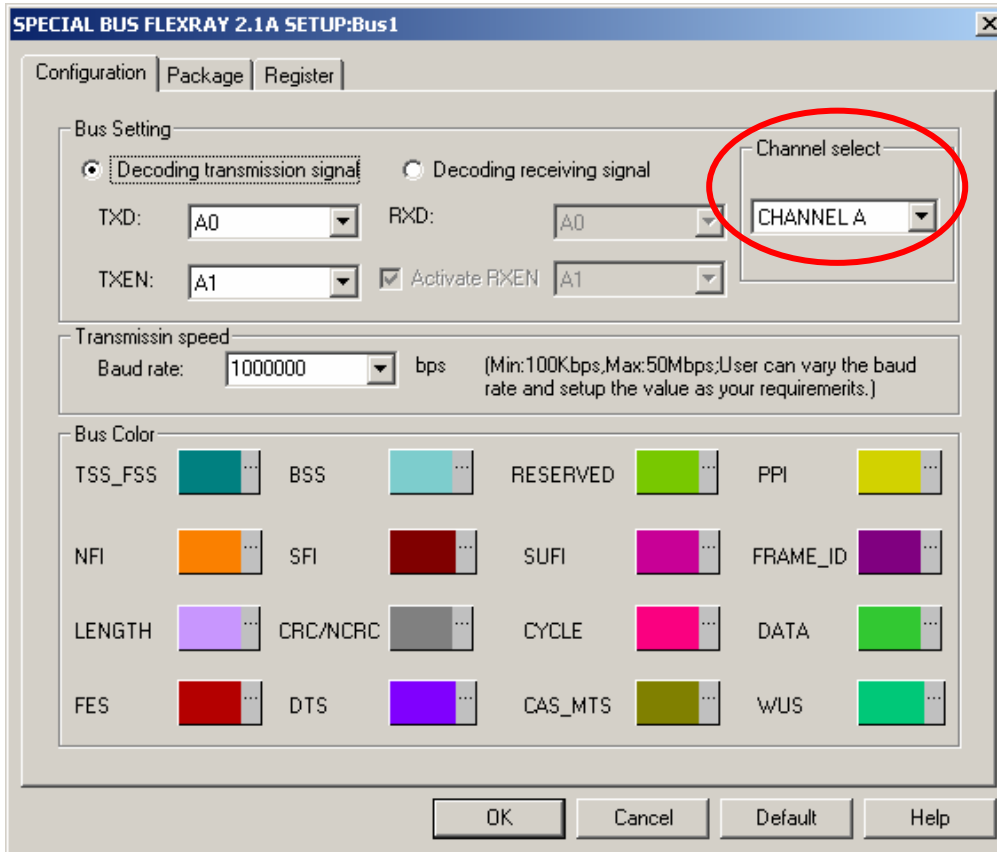
STEP 5. After completing Register, come back to the **Bus property** dialog box, then click the **parameters configuration** to start the Special Bus FLEXRAY2.1 setup.



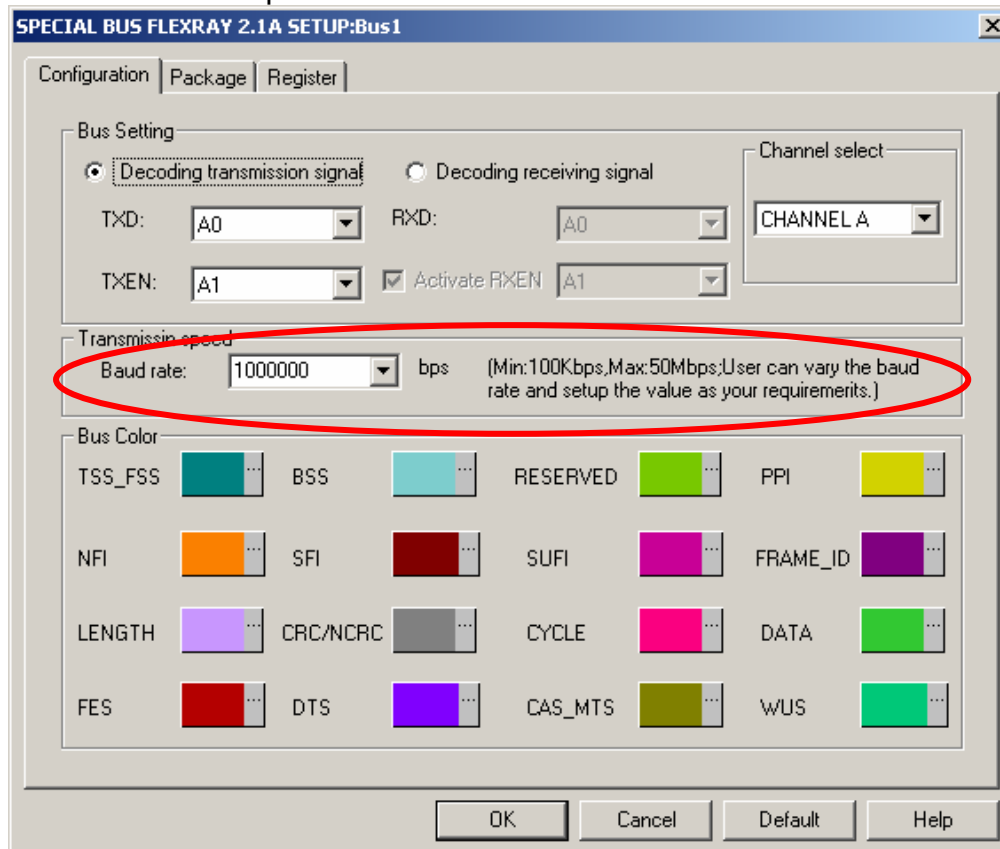
STEP 6. FLEXRAY2.1A Bus setting, select the decoding transmission and receiving signal line , you can choose whether to activate RXEN or not



STEP 7. There are CHANNEL A and CHANNEL B for channel selection .

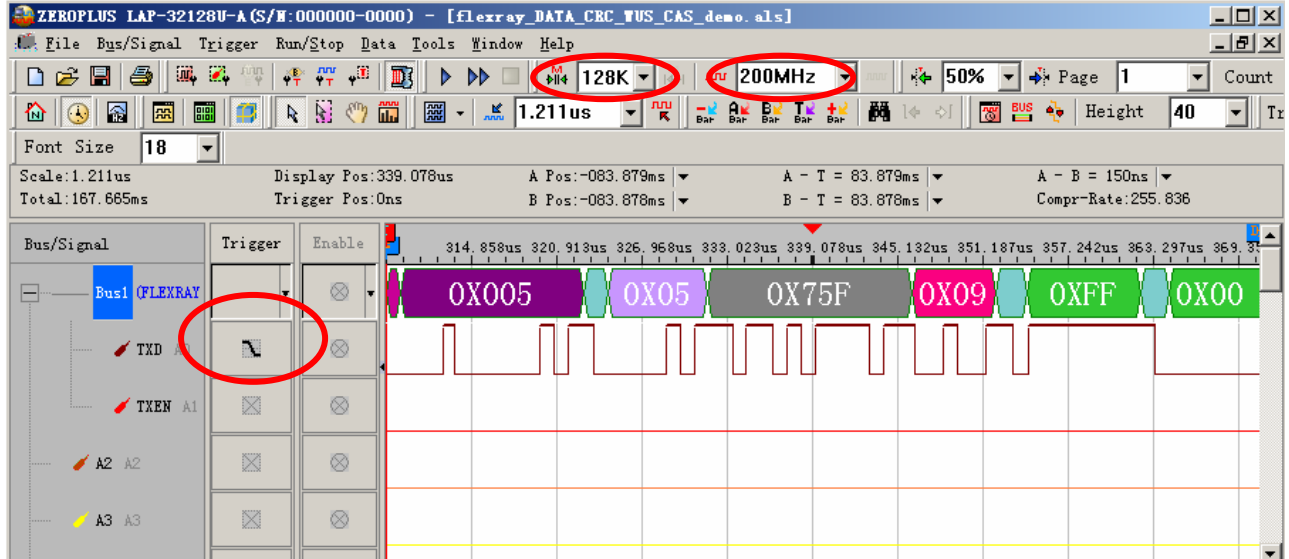


STEP 8. Transmission speed setting , the Minimum Baud rate is 100Kbps, the Maximum Baud rate is 50Mbps.



STEP 9. Following pictures show that the completion of the Bus decoding and package list. The conditions are set as Falling edge, Memory depth is 128K, Sampling frequency is 200MHz.

Bus Decoding



Package List

