



孕龍科技股份有限公司
ZEROPLUS TECHNOLOGY CO.,LTD

Instrument Business Department

MOD Specification

Version : V1.01

Content

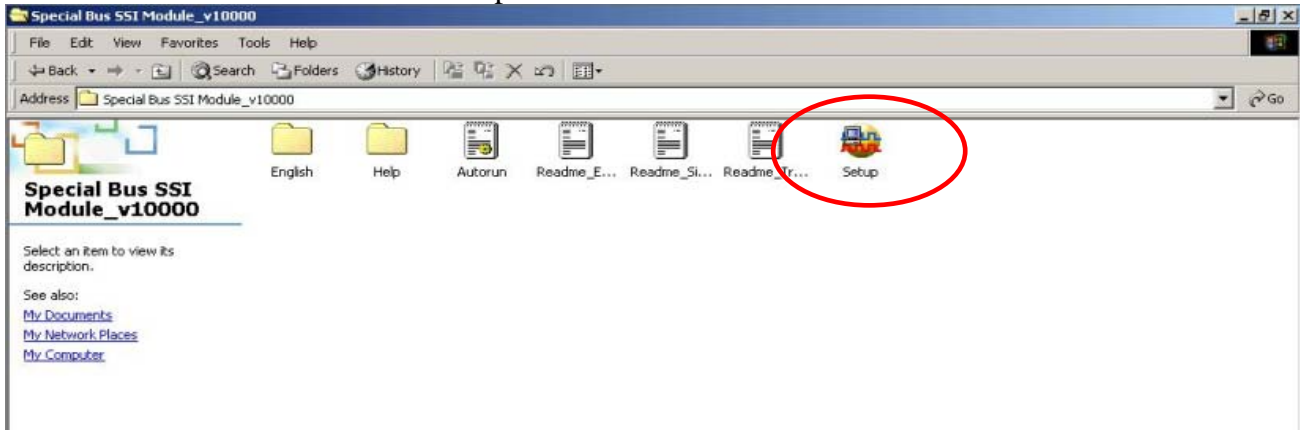
1	Software Installation	3
2	User Interface	7
3	Operating Instructions	10

1 Software Installation

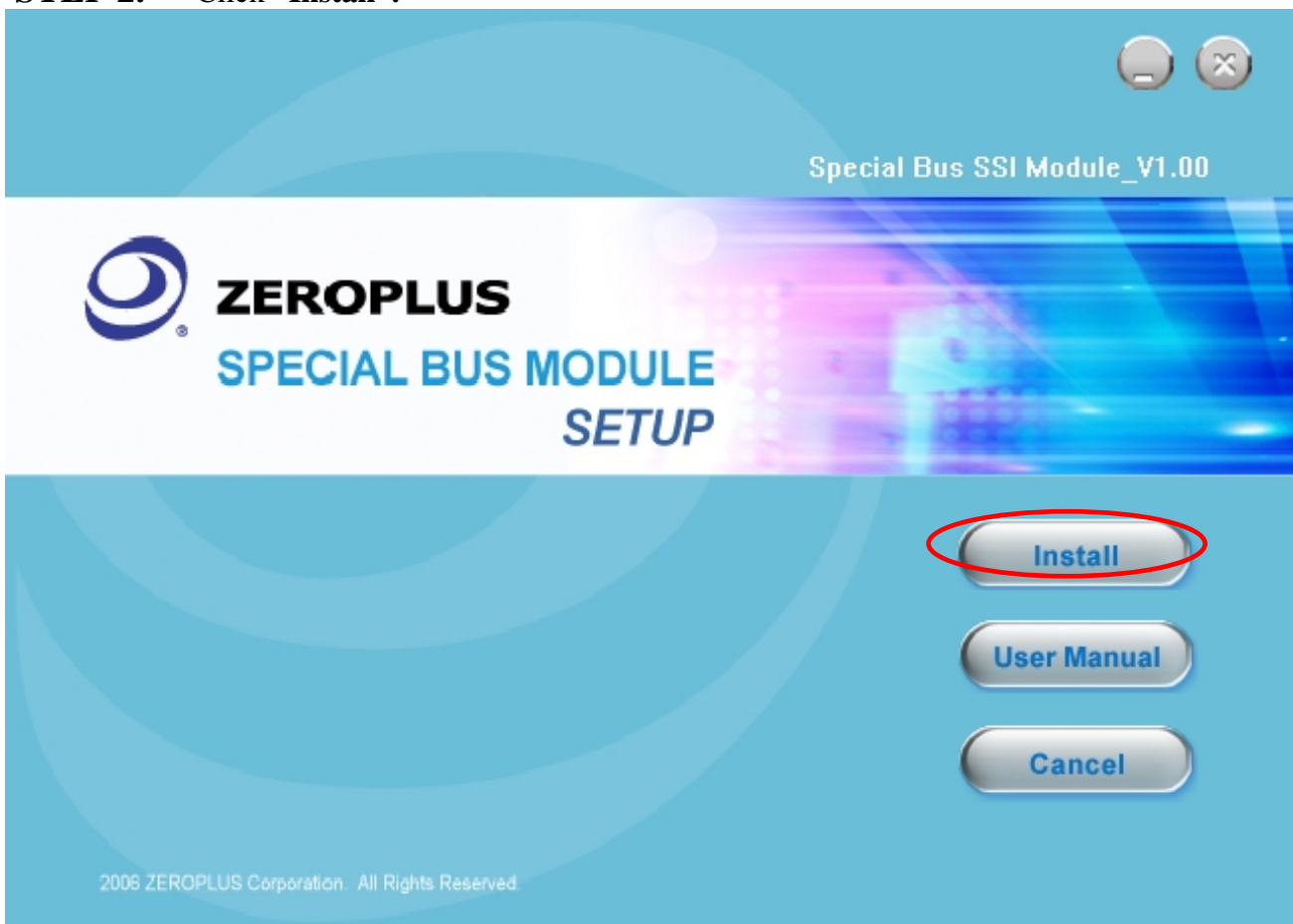
Please follow below steps to install the software.

- ※ The installation steps for all buses are the same; you can complete installation by following procedures. The below is an example to install **SSI bus**.

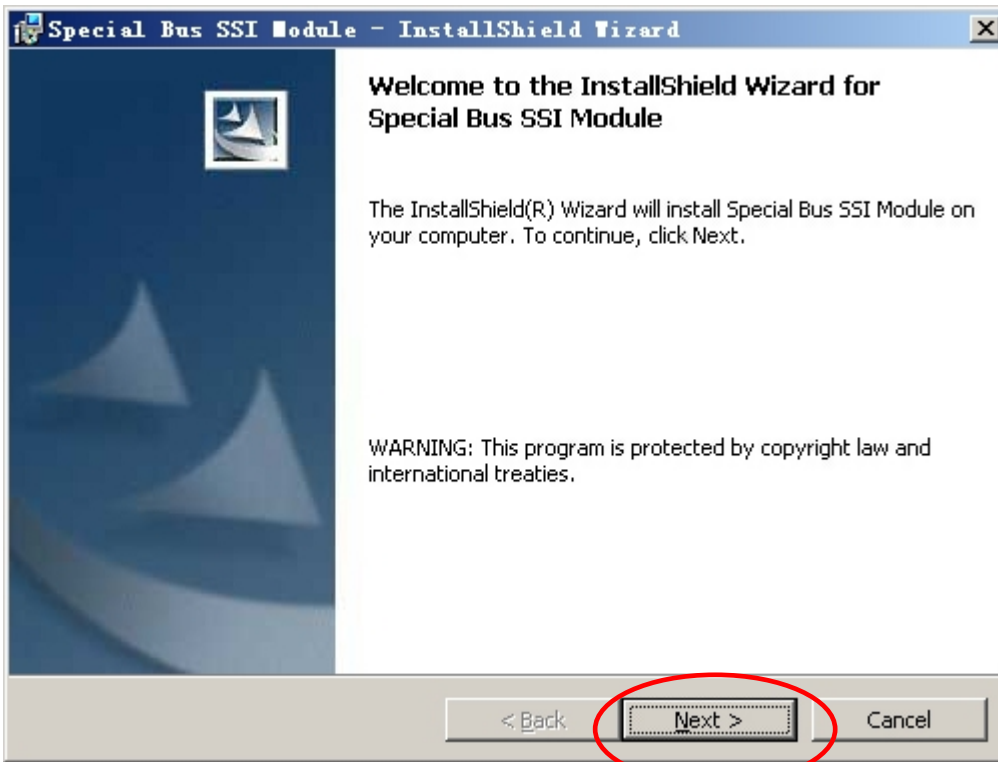
STEP 1. MOD Bus Module Setup.



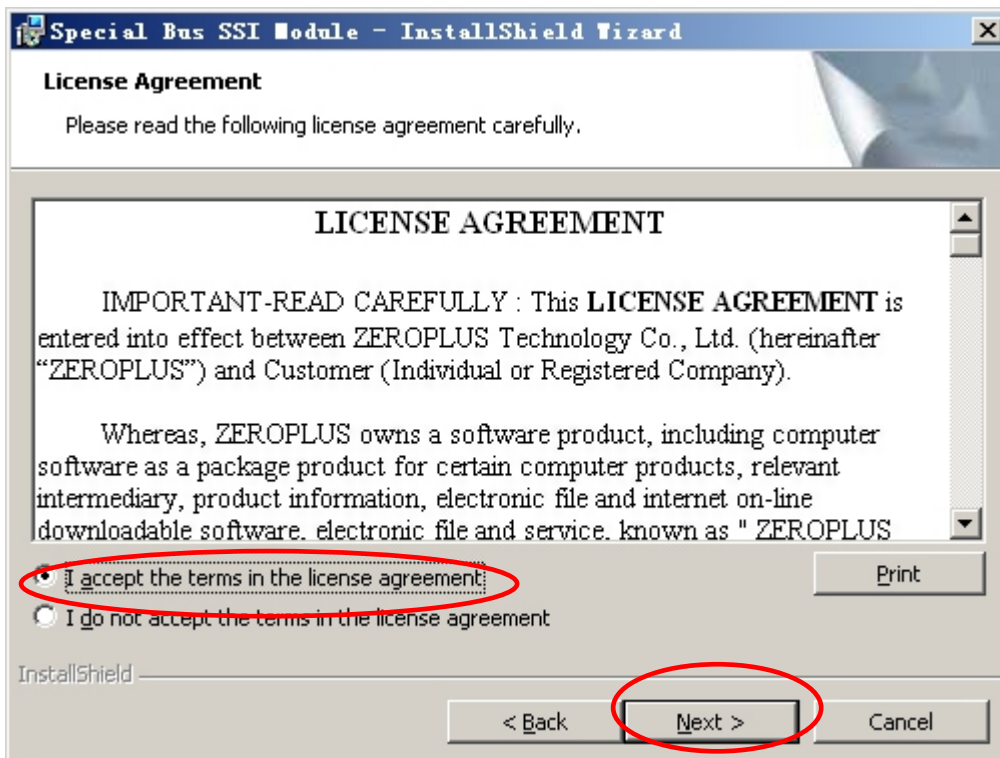
STEP 2. Click "Install".



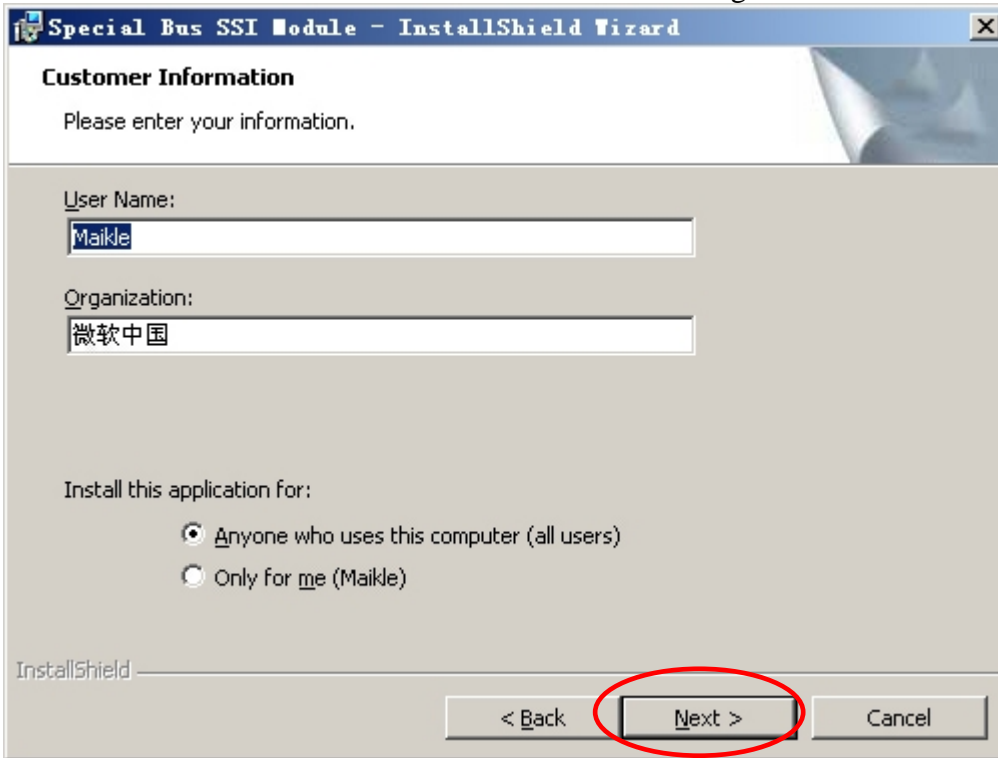
STEP 3. Click “Next”.



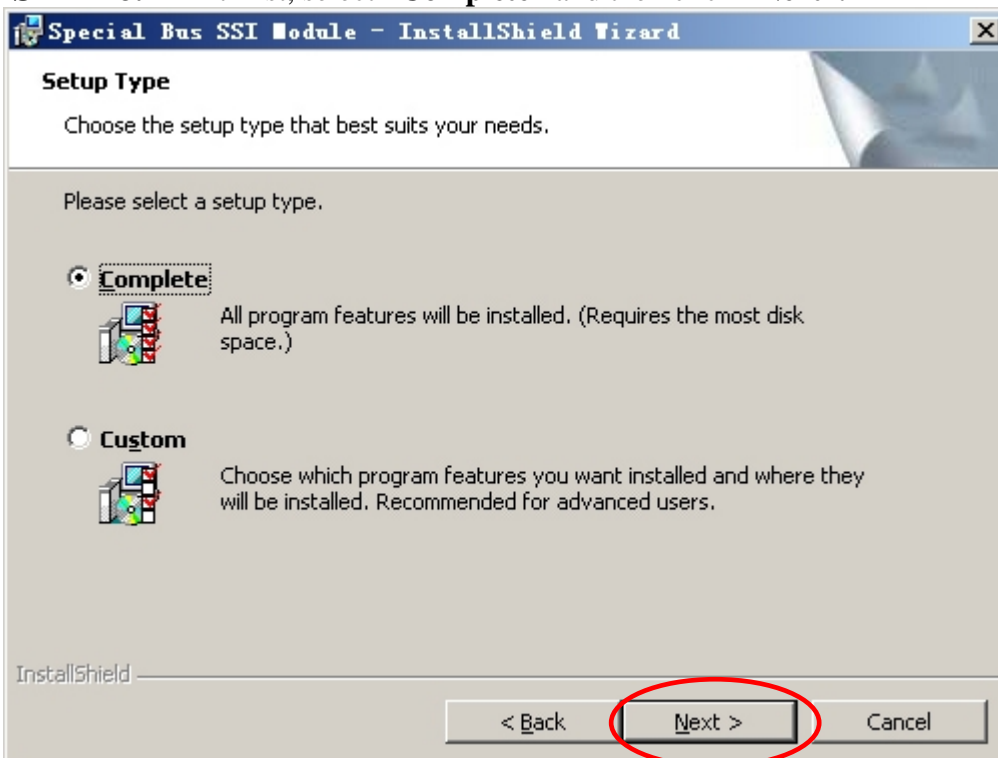
STEP 4. Select “I accept the terms in the license agreement”, and then press” Next”.



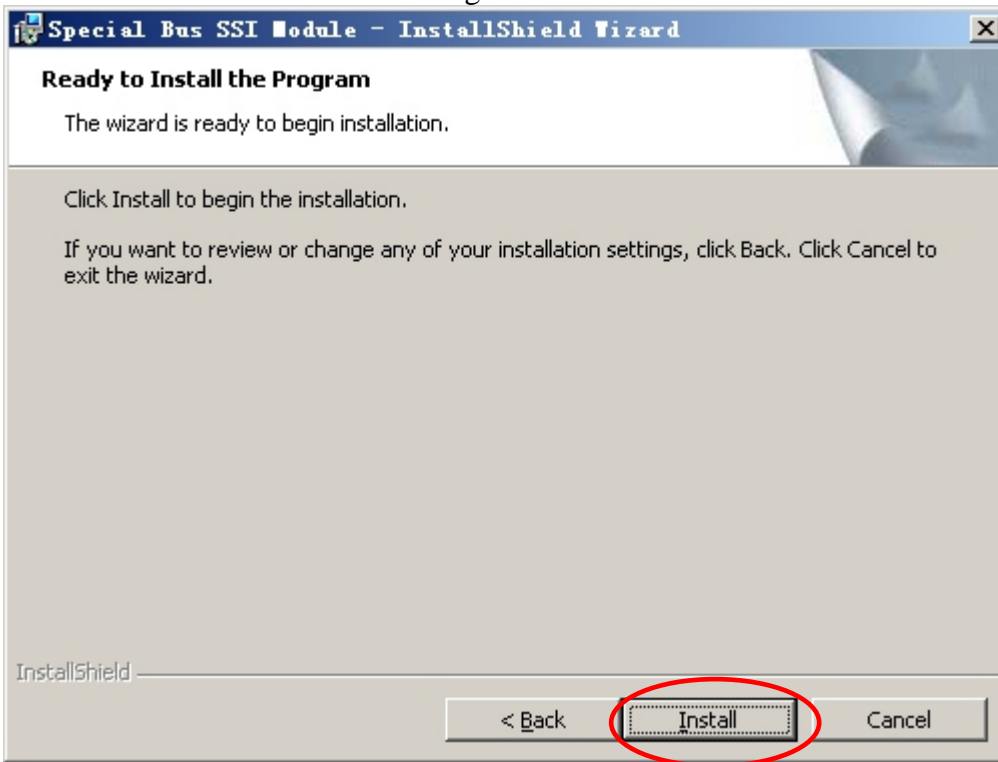
STEP 5. Fill in user information in the below dialogue window and click “Next”.



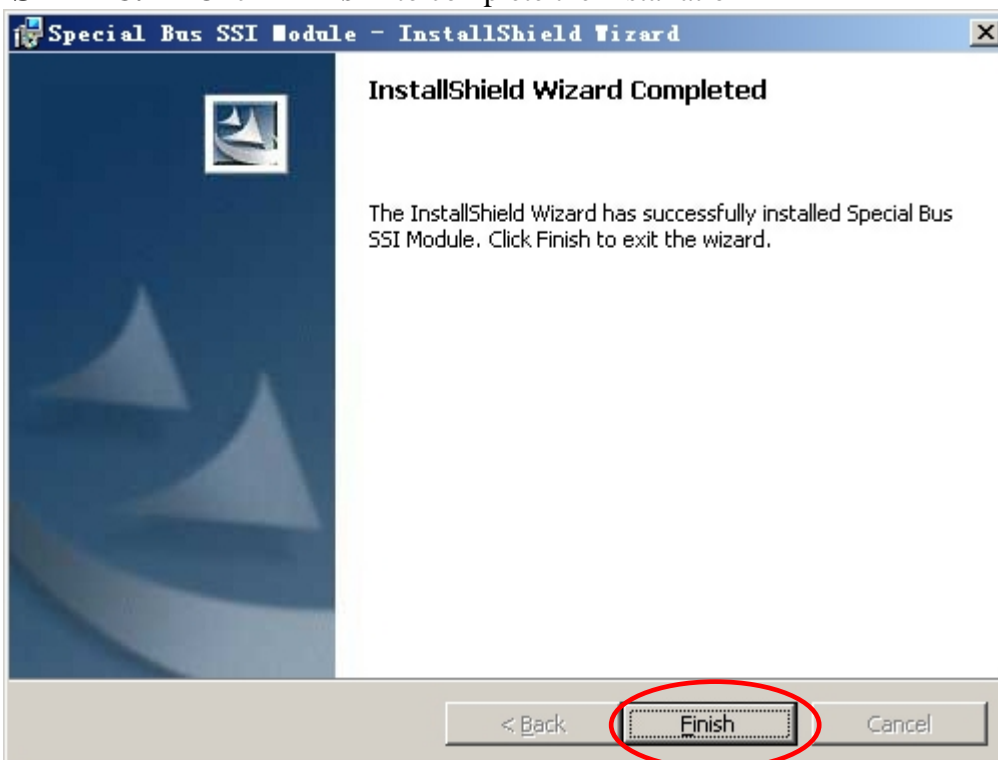
STEP 6. At first, select “Complete” and then click “Next”.



STEP 7. Click “Install” to begin the installation.



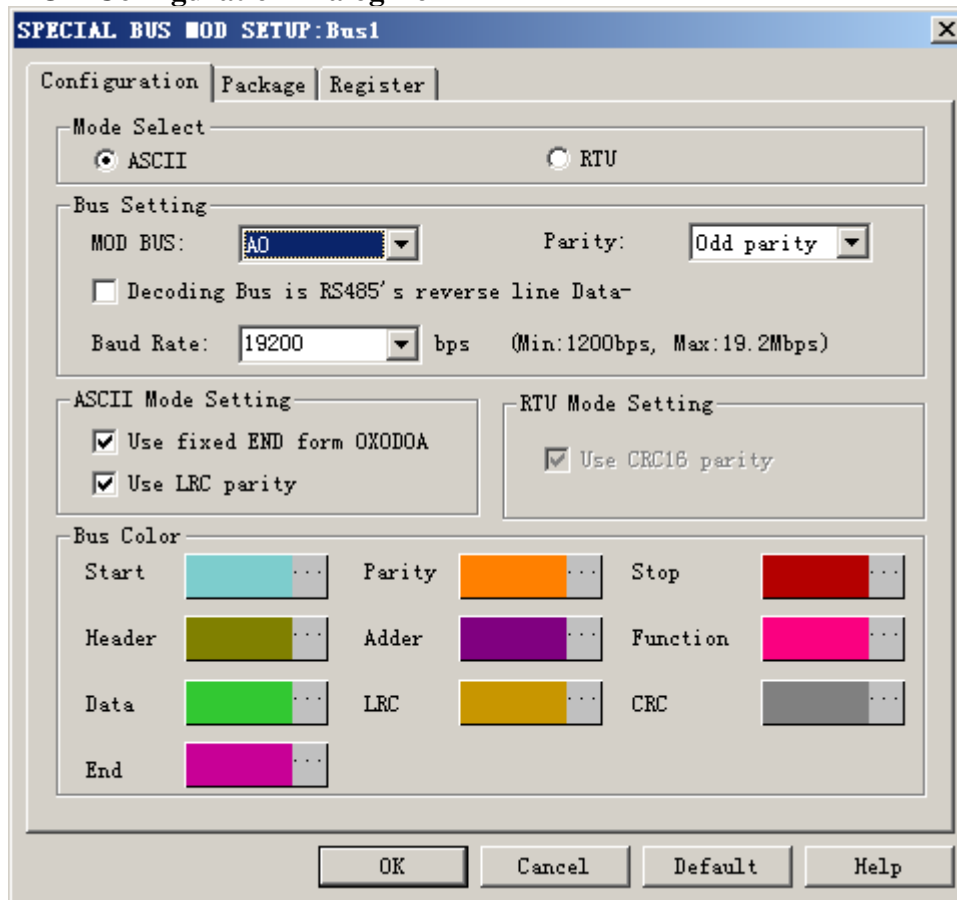
STEP 8. Click “Finish” to complete the installation.



2 User Interface

In the configuration, please refer to the below image to select options of setting MOD module.

MOD Configuration Dialog Box



Module Select:

There are two module encoding options to select; they are ASCII mode and RTU mode.

Bus Setting :

MOD BUS: The MOD bus channel can be selected from the dropdown menu.

Decoding bus is RS485's reverse line DATA-:

Notice: If you select "Decoding Bus is RS485's Reverse Line DATA" option, when you decode the bus, you should reverse all values and then explain the decoding in the original way. Therefore, all reversed data include :Start, End, Data, PARITY, Leisure, etc. The default is not selected.

Baud Rate: The baud rate can be selected from the dropdown menu or filled within 1200~ 19200000BPS.

Odd/Even Parity: The parity can be selected from the dropdown menu, the options are: Odd parity, Even parity and None parity.

Different module setting:

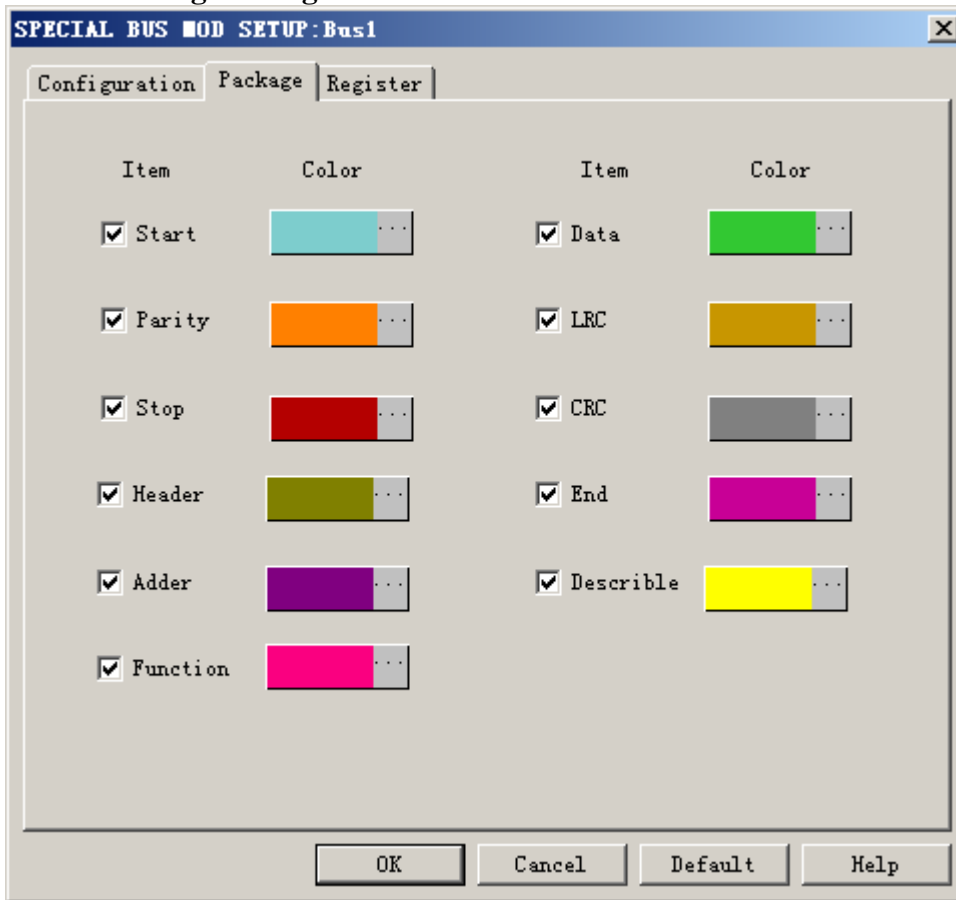
In the ASCII module, you can select whether use the fixed END mode, that is to say CRLF, the Hexadecimal indicates in 0X0D0A.

And you can select whether use LPC parity and CRC16 parity in the RTU module.

Bus Color:

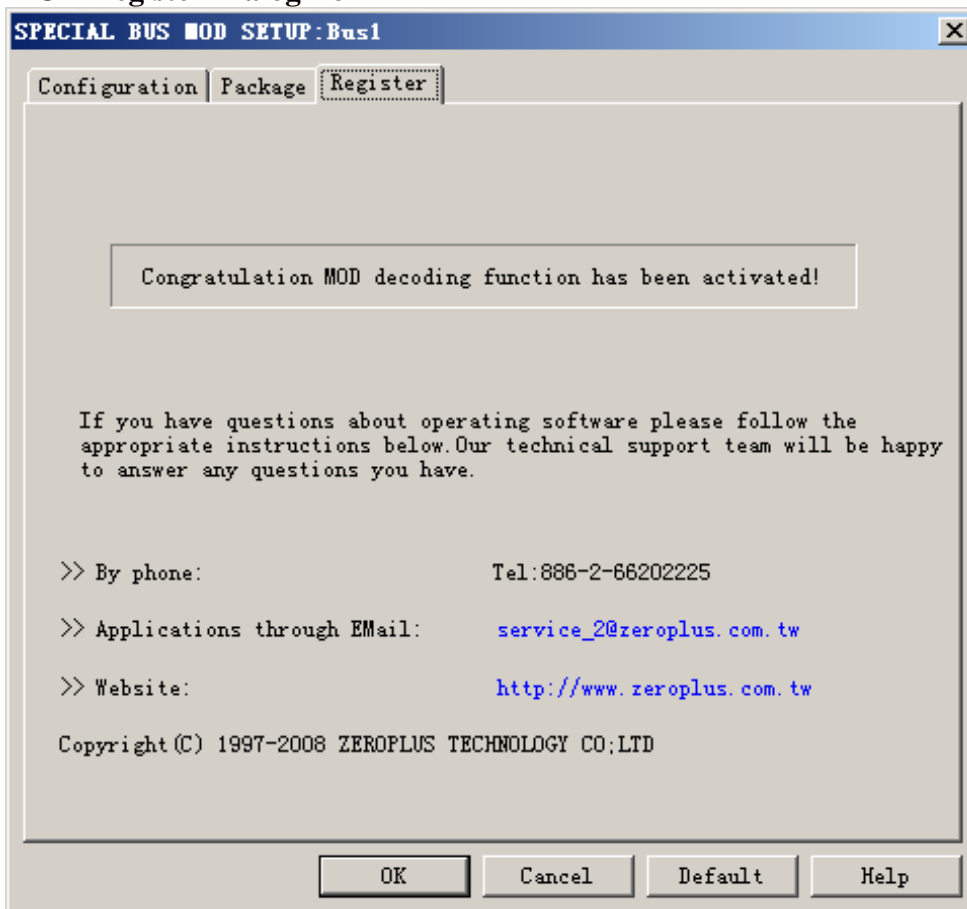
The bus color can be varied by user, such as the color of Start, Parity, Stop, Header, Adder, Function, Data, LRC, CRC and End.

MOD Package Dialog Box



In the Package part, user can select the items and colors configuration as user's requirements.

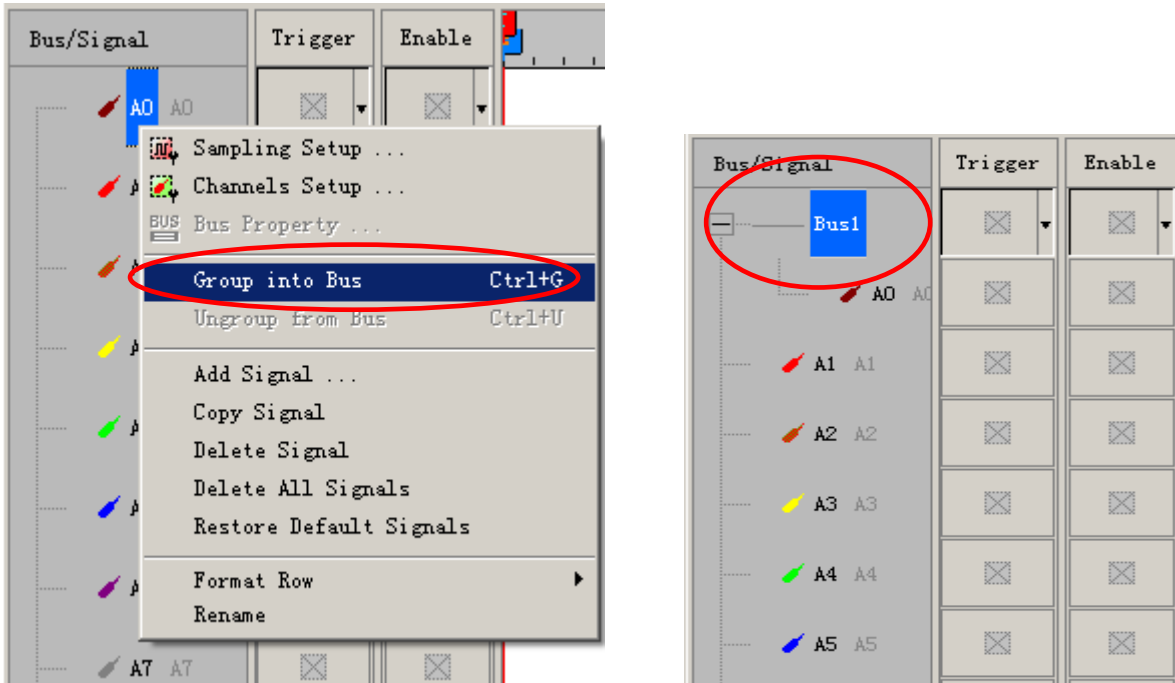
MOD Register Dialog Box



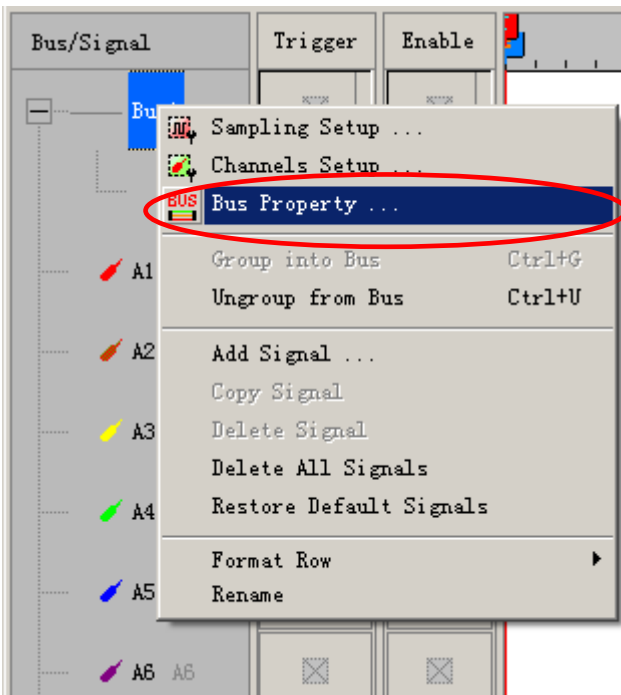
There is Zeroplus company information. If you have questions about software Operations, you can contact Zeroplus by Telephone or Email.

3 Operating Instructions

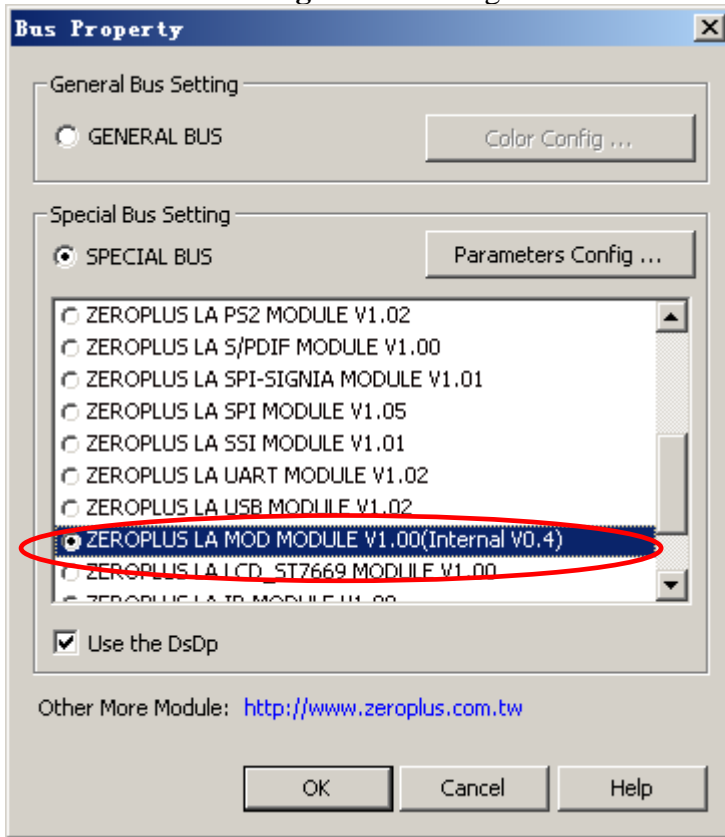
STEP 1. At first, group the unanalyzed channel into **Bus 1** by pressing the **Right Key** on mouse.



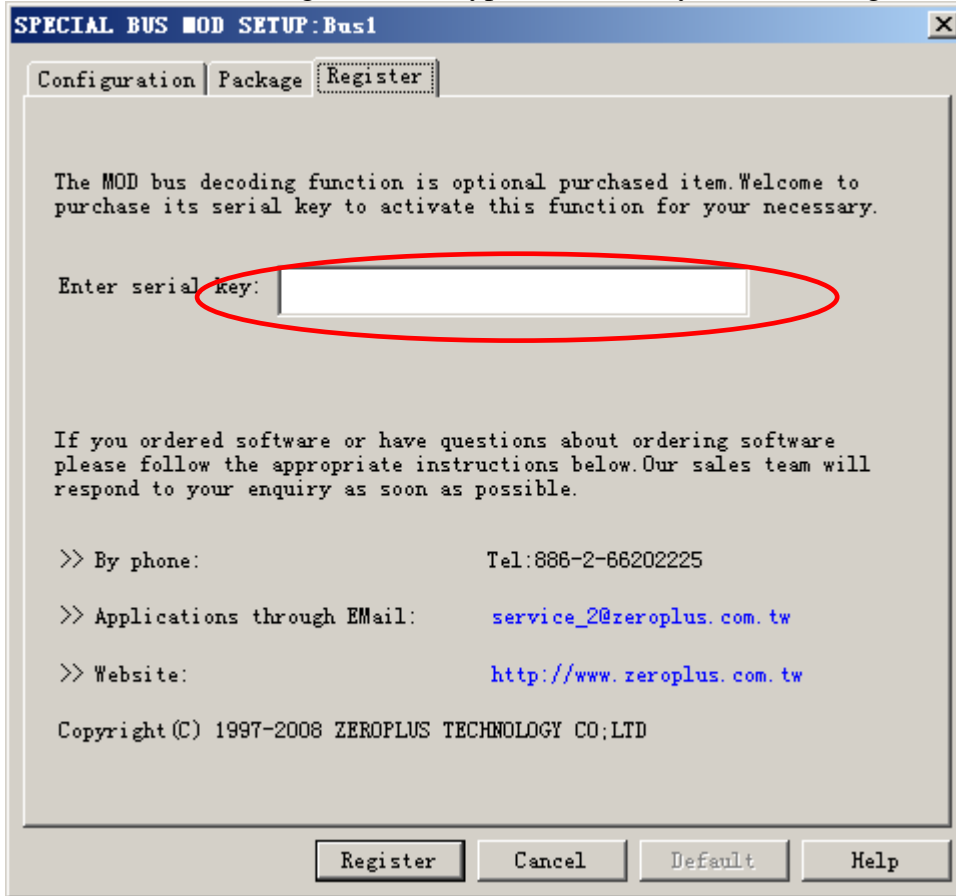
STEP 2. Select **Bus1**, then press **Right key** on mouse to list menu, then press **Bus Property** or **Bus** bar on the toolbar to open **Bus Property** dialog box.



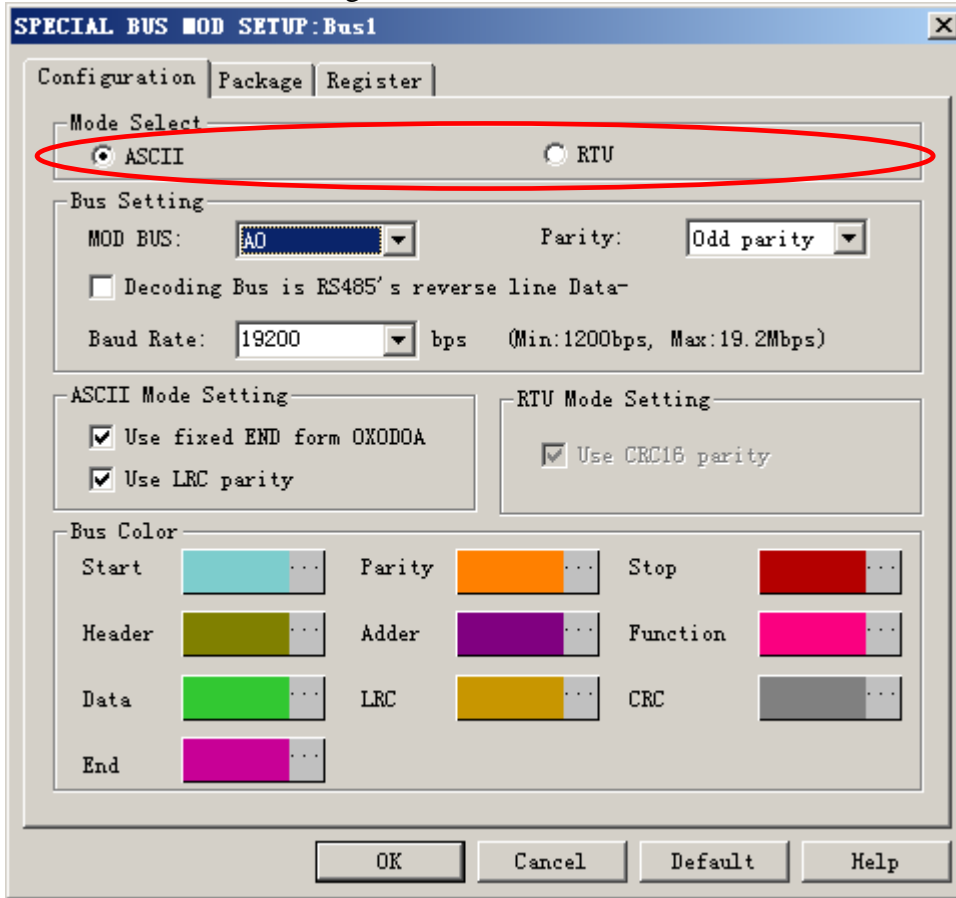
STEP 3. For Special Bus MOD Parameter Configuration, select Special Bus, and then choose “ZEROPLUS LA MOD MODULE V1.00”. Next click **Parameters Configuration** to open **Parameters Configuration** dialog box.



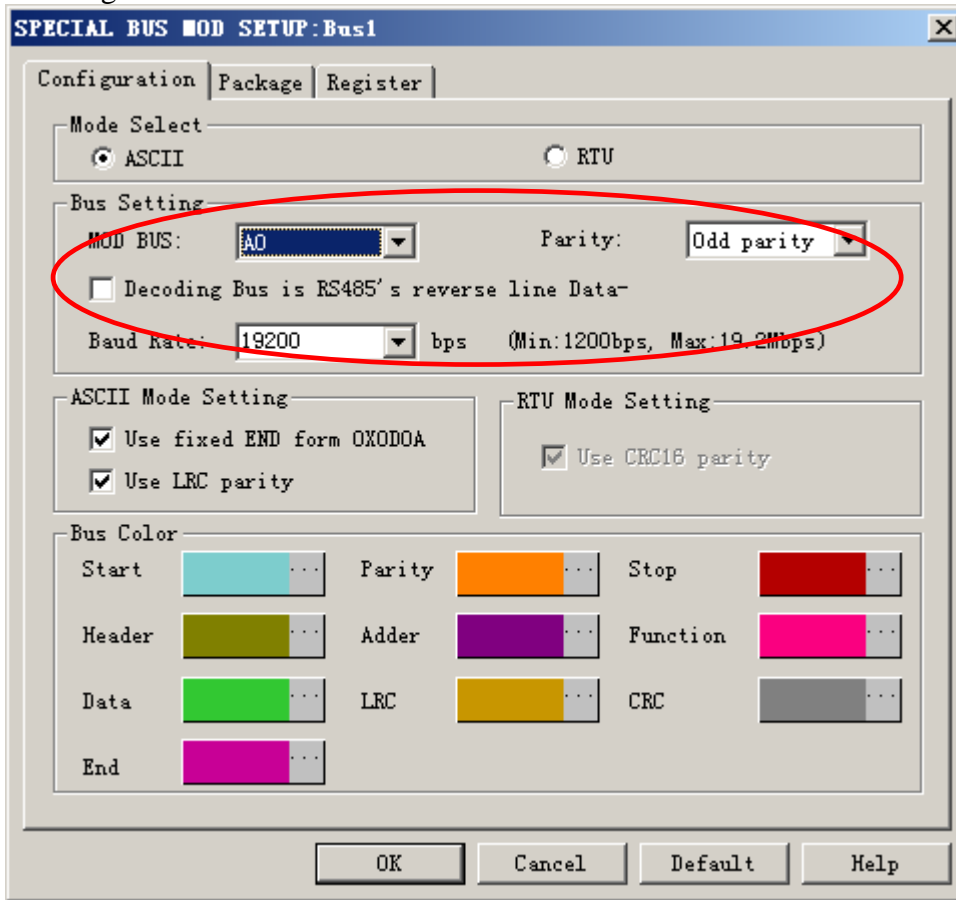
STEP 4. Press Register tab to type the serial key number of logic analyzer. Then, press “**Register**”.



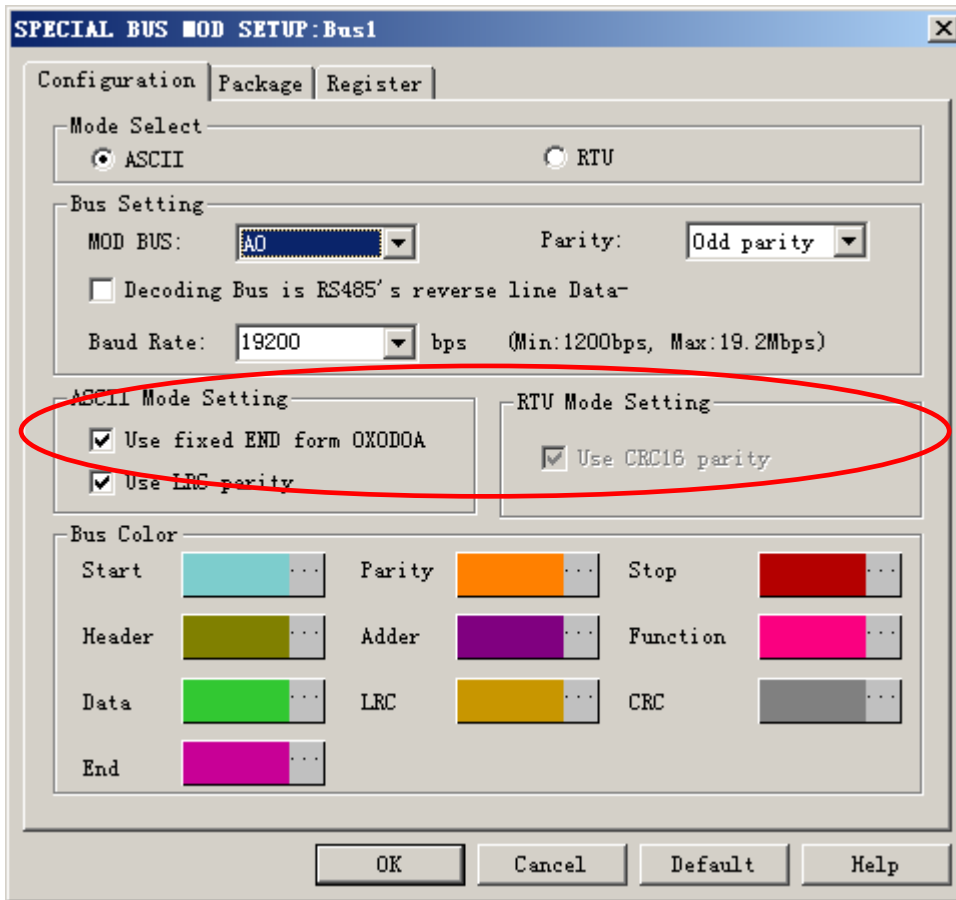
STEP 5. After Registering on the register dialogue window, open the Configuration dialog box and then select the decoding module.



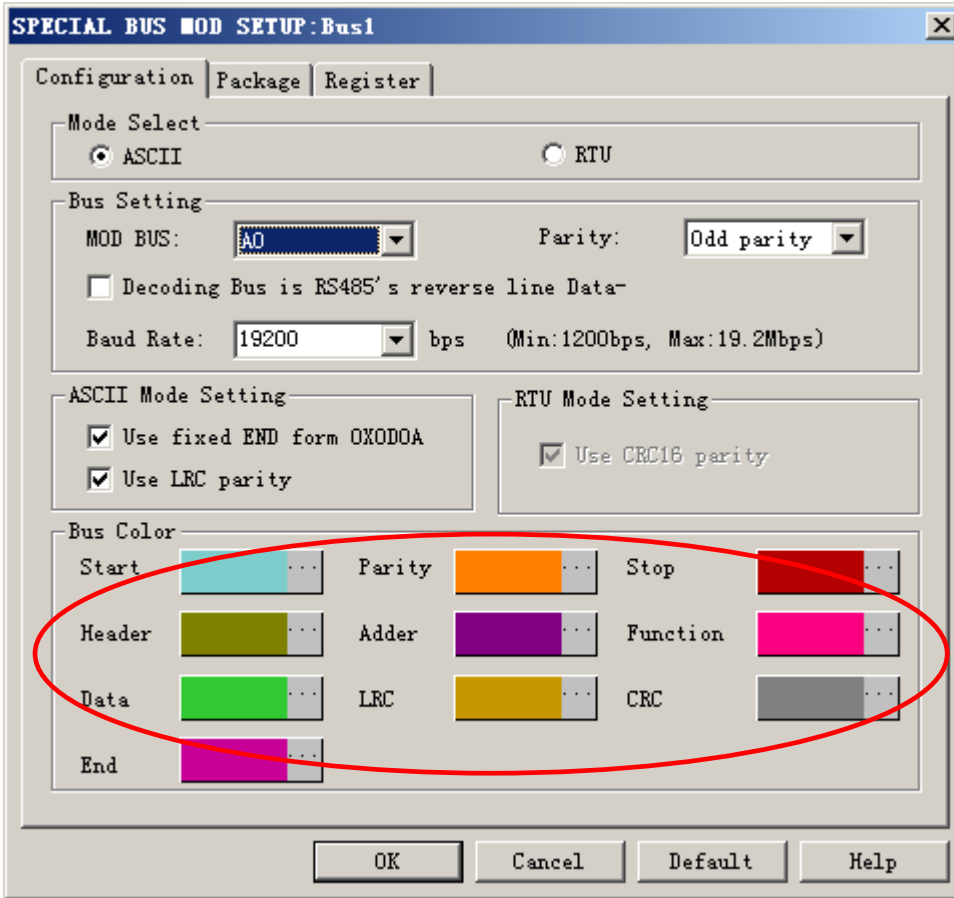
STEP 6. Setting MOD BUS channel ,Baud Rate and Parity in the MOD Module configuration dialog box



STEP 7. Selecting Parameter Setting under the different modes in the configuration dialog box.

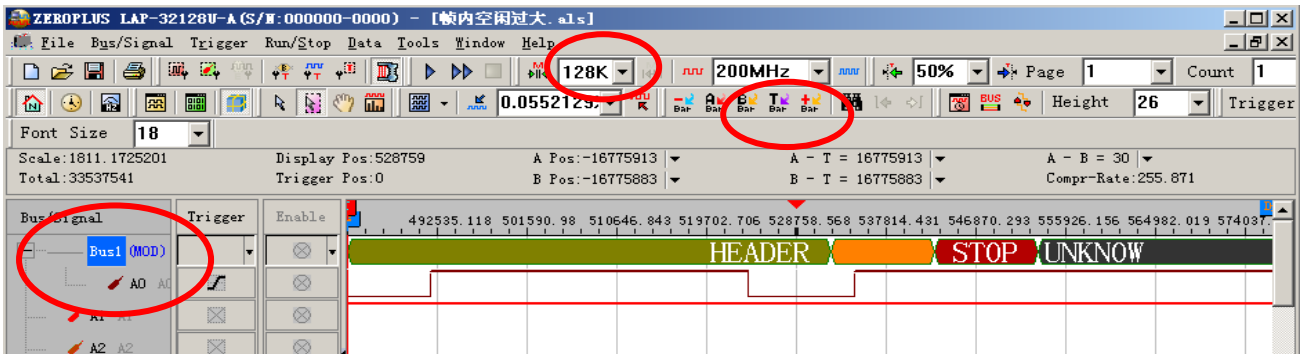


STEP 8. Setting Bus Colors for Start, Parity, Stop, Header, Adder, Function, Data, LRC, CRC and End.



STEP 9. Following pictures show that the completion of the Bus decoding and package list. The conditions are set as Rising edge, Memory depth is 128K, Sampling frequency is 200MHz and the compression is activated.

Bus Decoding



Package List

