



孕龍科技股份有限公司
ZEROPLUS TECHNOLOGY CO.,LTD

Instrument Business Department

MICRO-WIRE Specification

Edition: V1.01

Content

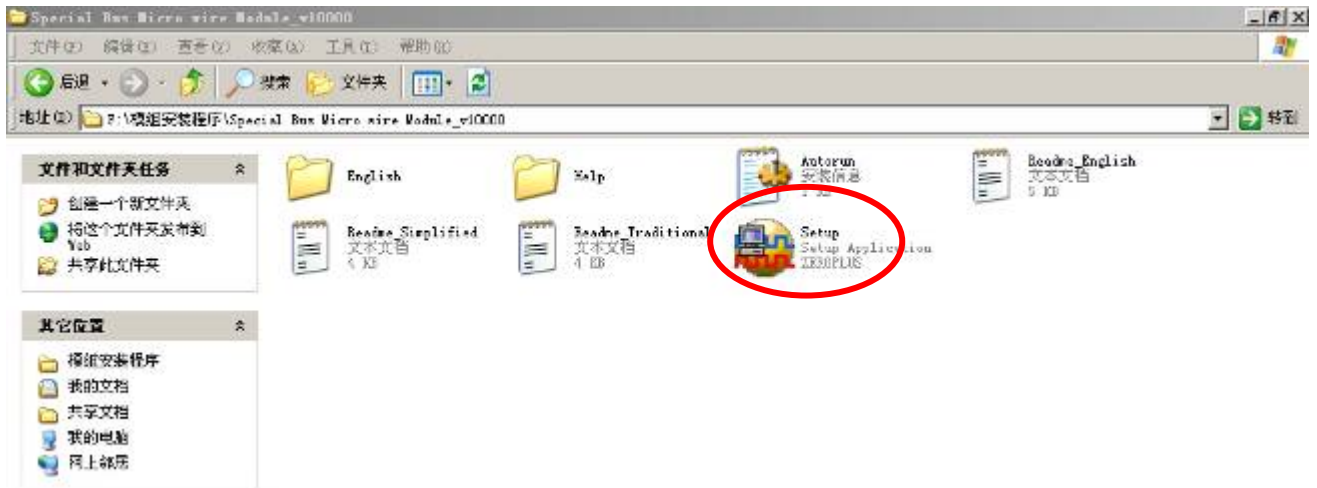
1	Software Installation	3
2	User Interface	7
3	Operating Instructions	10

1 Software Installation

Please Install software by the following steps.

Note: The installed steps to setup all buses are in the same, you can complete installation by following procedures.

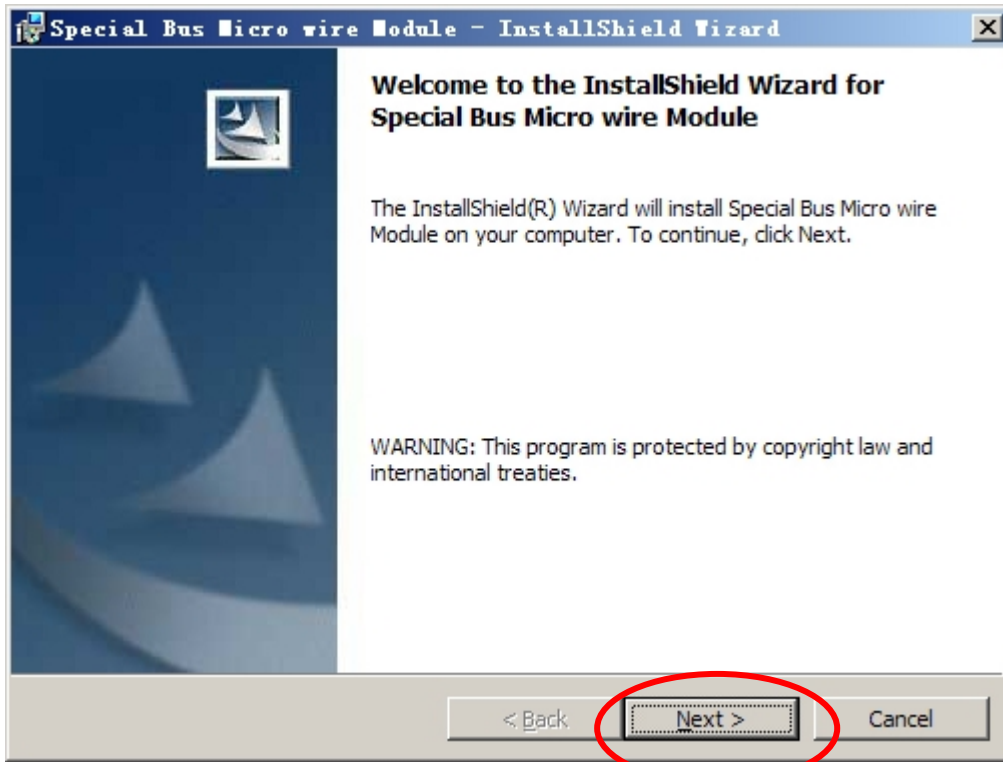
STEP 1. Install MICRO-WIRE Bus Module.



STEP 2. Press "Install"



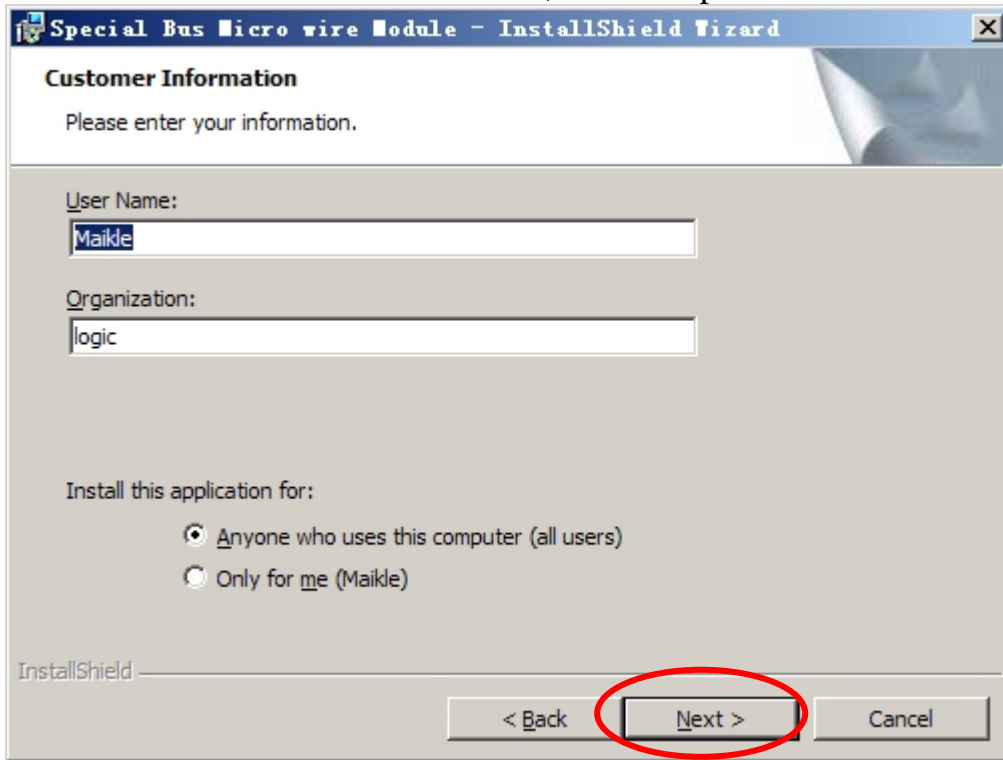
STEP 3. Press “Next”



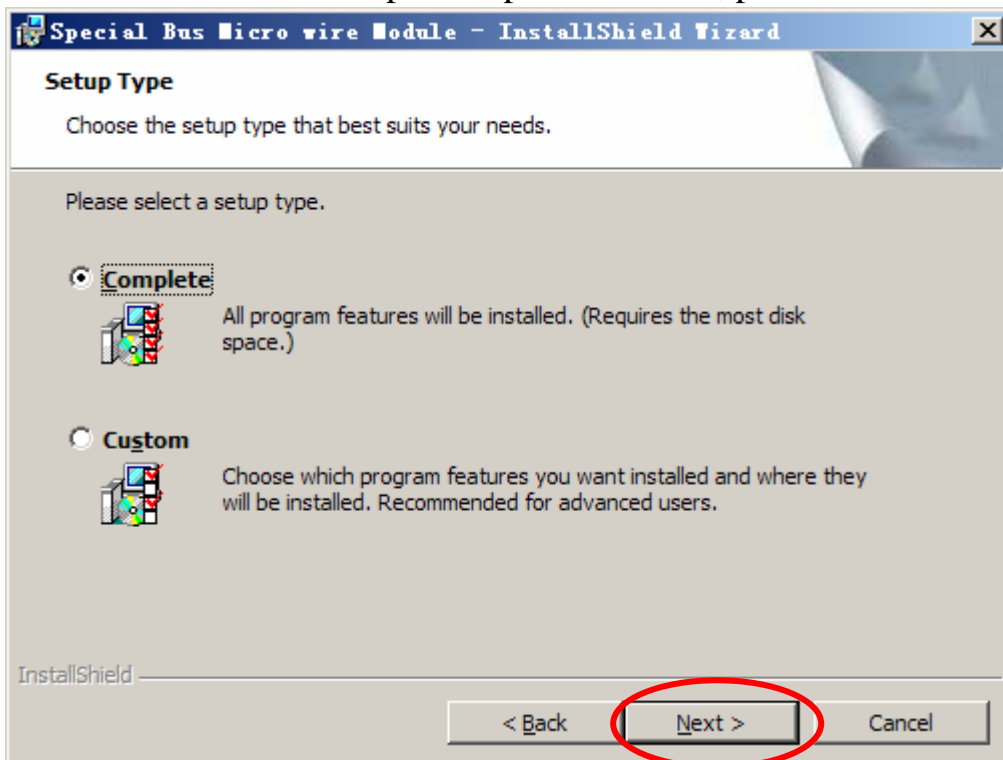
STEP 4. Select “I accept the terms in the license agreement”, and then press “Next”



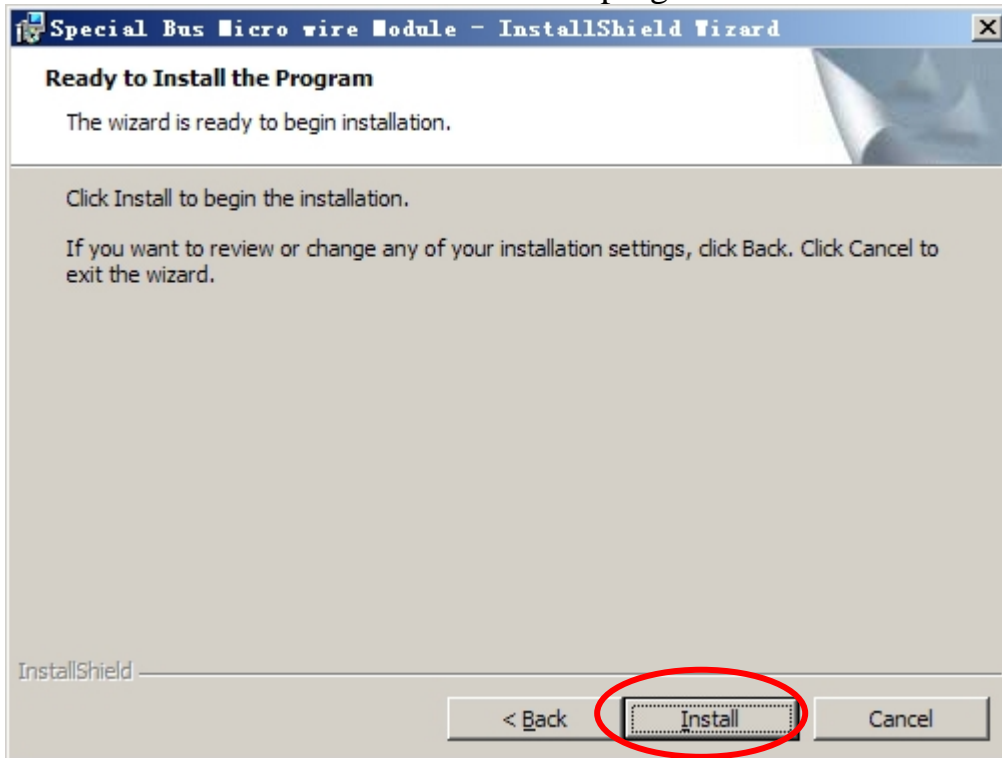
STEP 5. Fill in user information, and then press “Next”



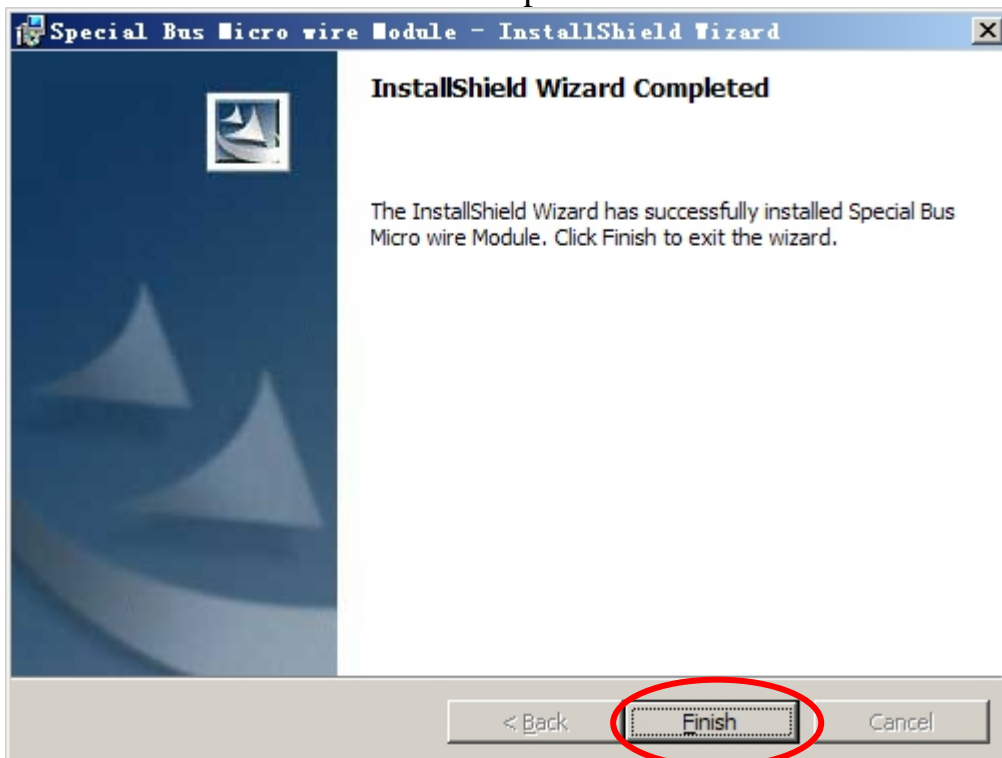
STEP 6. Select “Complete” option and then, press “Next”



STEP 7. Press Install to start install program.



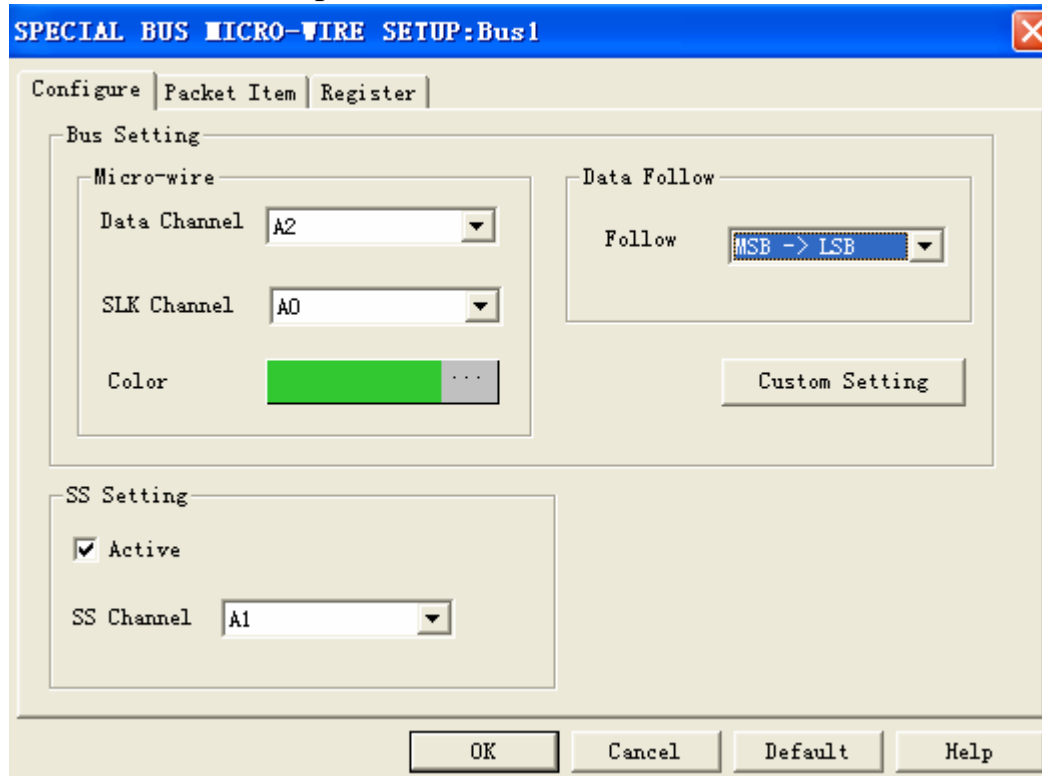
STEP 8. Press "Finish" to complete installation.



2 User Interface

Please refer to image below to select options of setting MICRO-WIRE .

MICRO-WIRE Setup Dialog Box fro Bus 1



MICROWIRE Channel Options

SLK Channel: The default is A1.

Data Channel: The default is A2.

SS Channel: Select SS, the default is A0.

Data Follow Setup

The default is MSB->LSB; it can be selected as LSB->MSB.

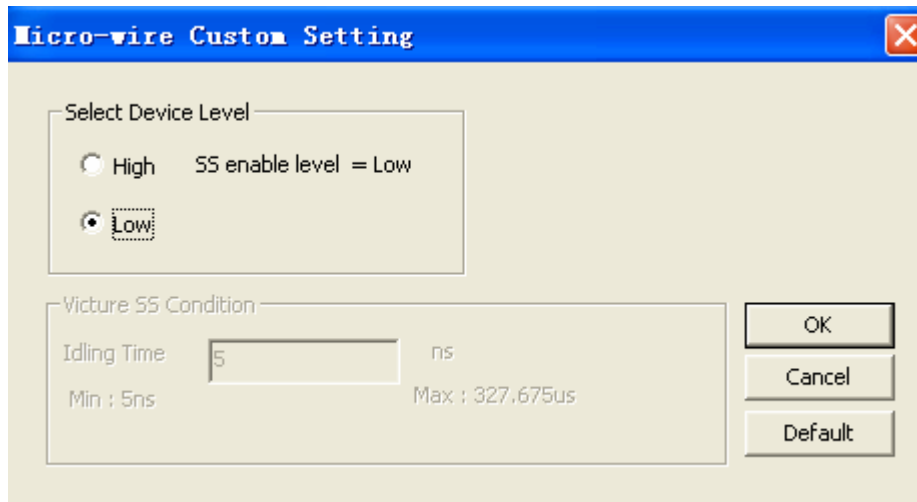
Bus Color

The default color is Green

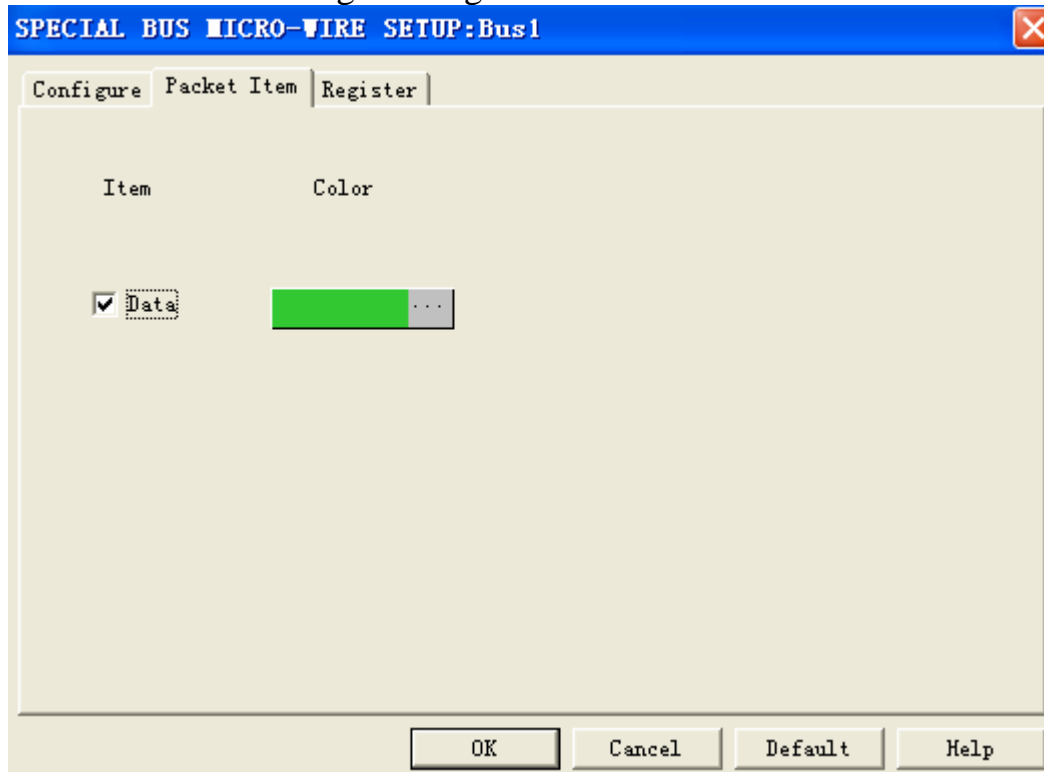
Custom Setting

Difference between the definition and SPI is that it is unnecessary to identify a bit due to the uncertain MICRO WIRE bits. All bits can be decoded. User can define the value as his own requirement.

Moreover, the virtual SS bus can proceed decode issues caused from the reason without SS bus.



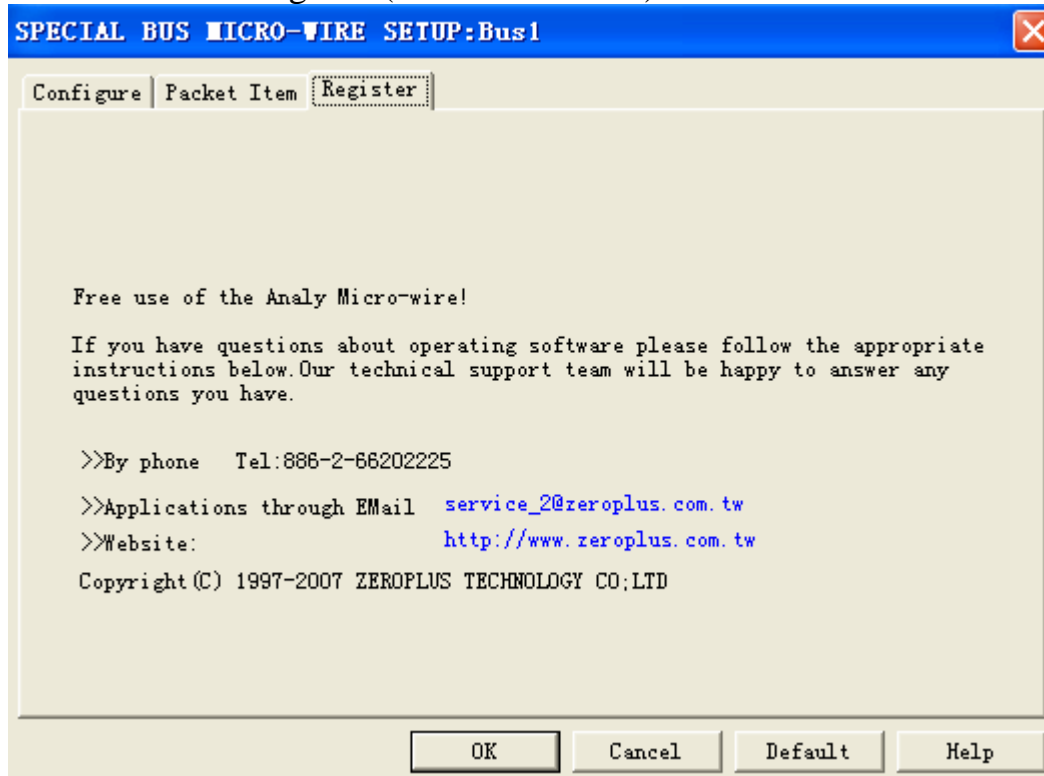
MICRO-WIRE Package Dialog Box



Item: Select "DATA" to change the package color.

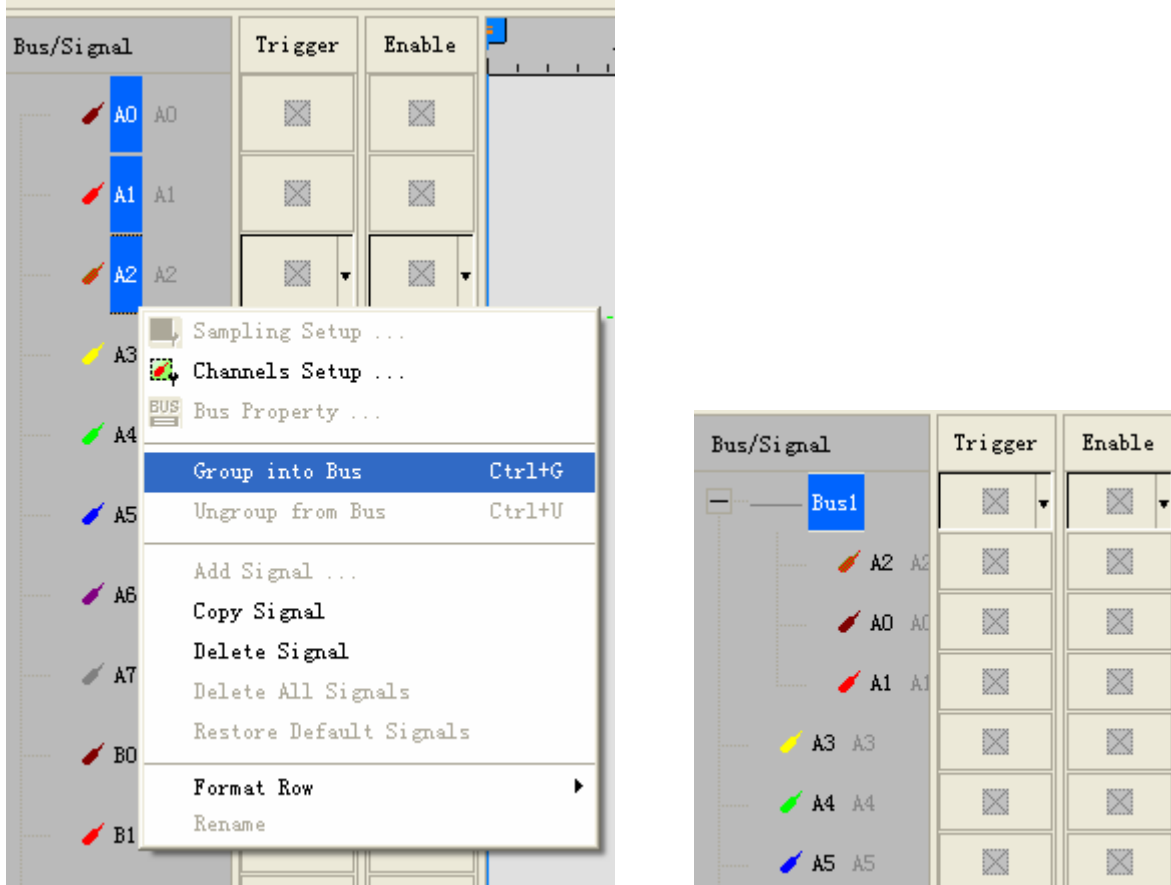
Color: This option changes the color of the package. The default color shown on the button is green. Click the color to select another color.

MICRO-WIRE Register (For Free Version)

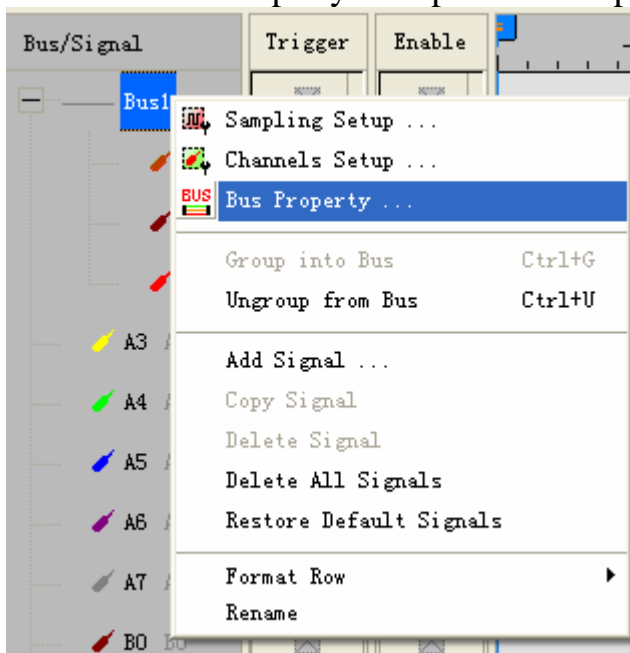


3 Operating Instructions

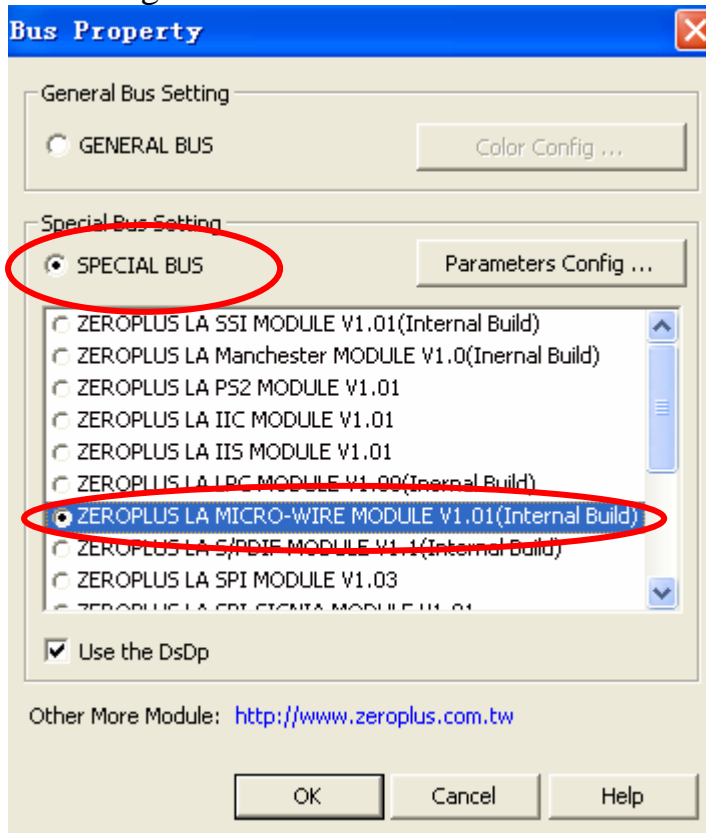
STEP 1. At First, group the unanalyzed channels into bus1



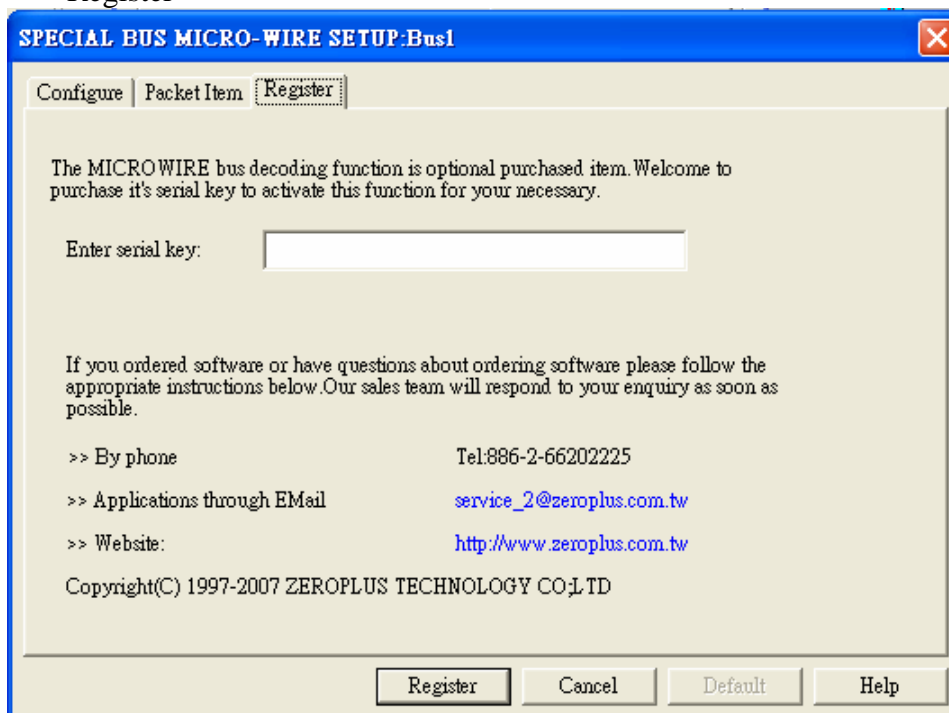
STEP 2. Selected Bus 1, then, press “Right Key” on mouse to list menu. Next, click” Bus Property” to open Bus Property Dialog Box.



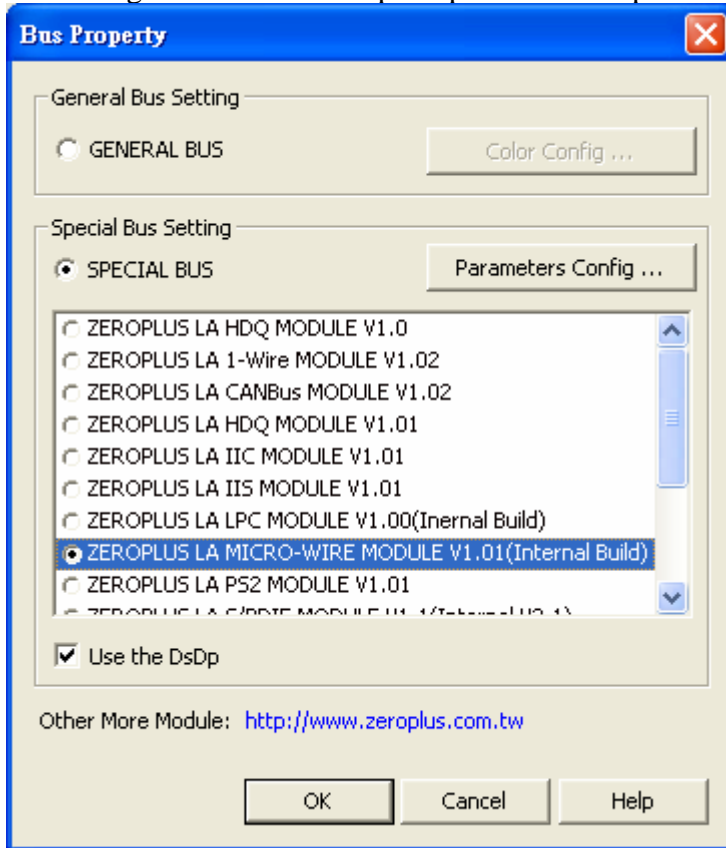
STEP 3. For Special Bus Setting, select Special Bus . Then , choose "ZEROPLUS LA MICRO-WIRE MODULE V1.01(Internal Build). Next, click "Parameters Configuration".



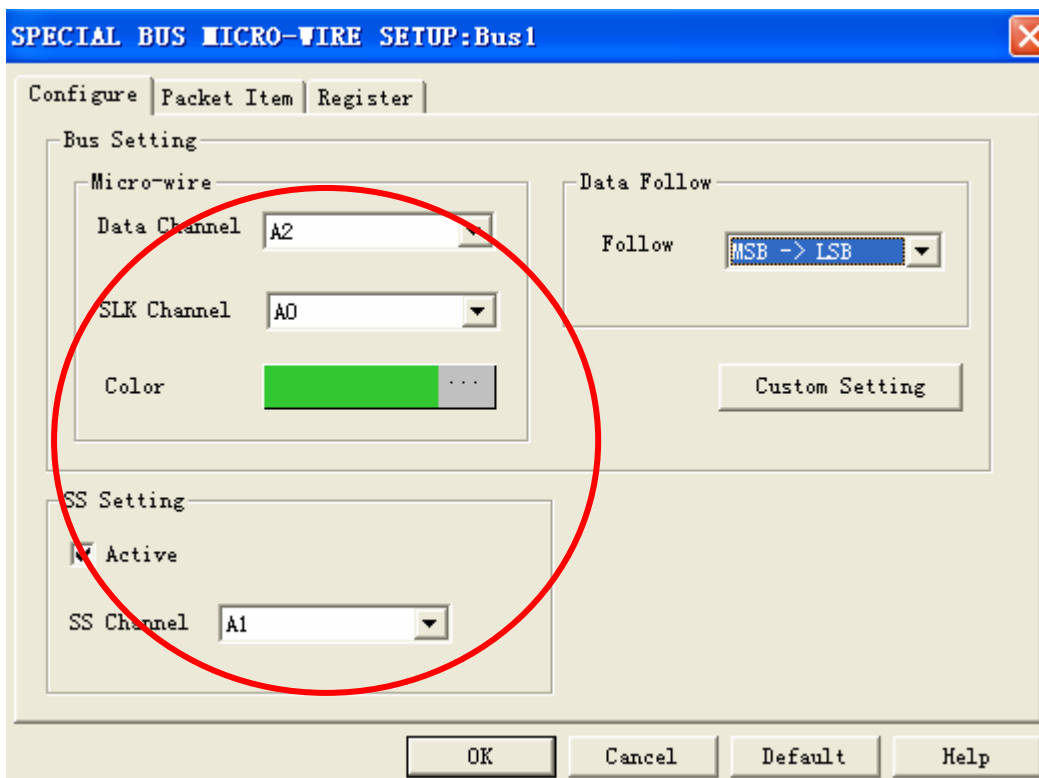
STEP 4. Register user information: type the serial key number of logic analyzer. Then, press "Register"



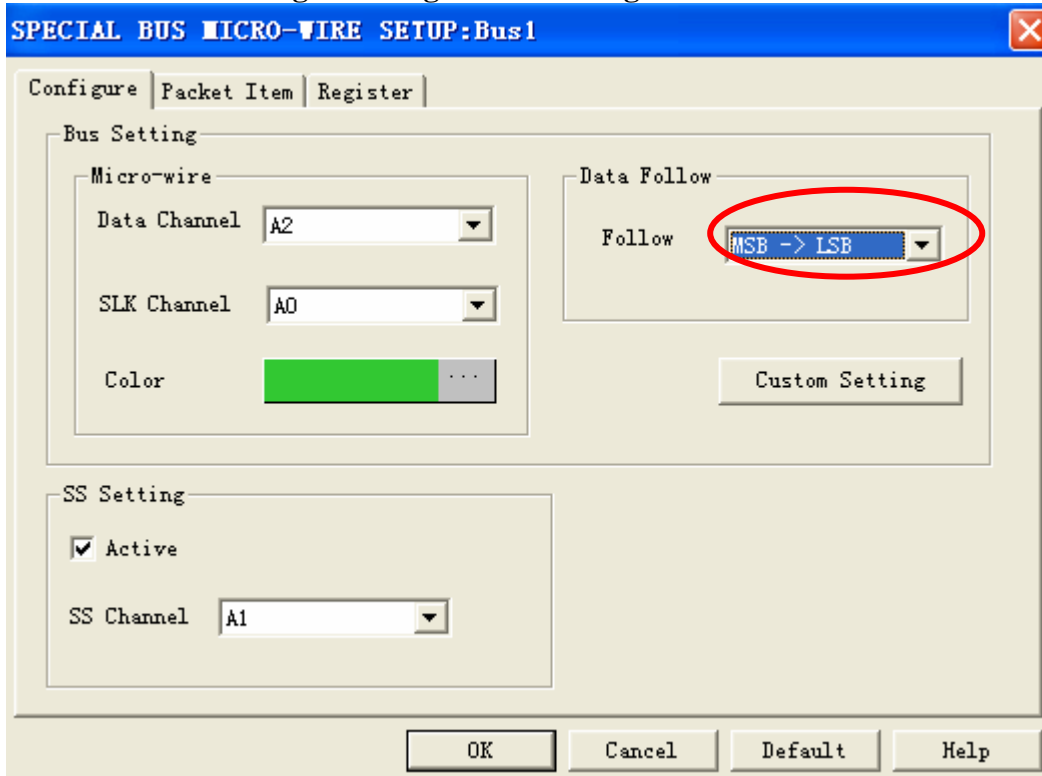
STEP 5. After completing it turns to Bus Property dialogue box. Pressing “Parameter Configuration” is to set up the parameter of special bus.



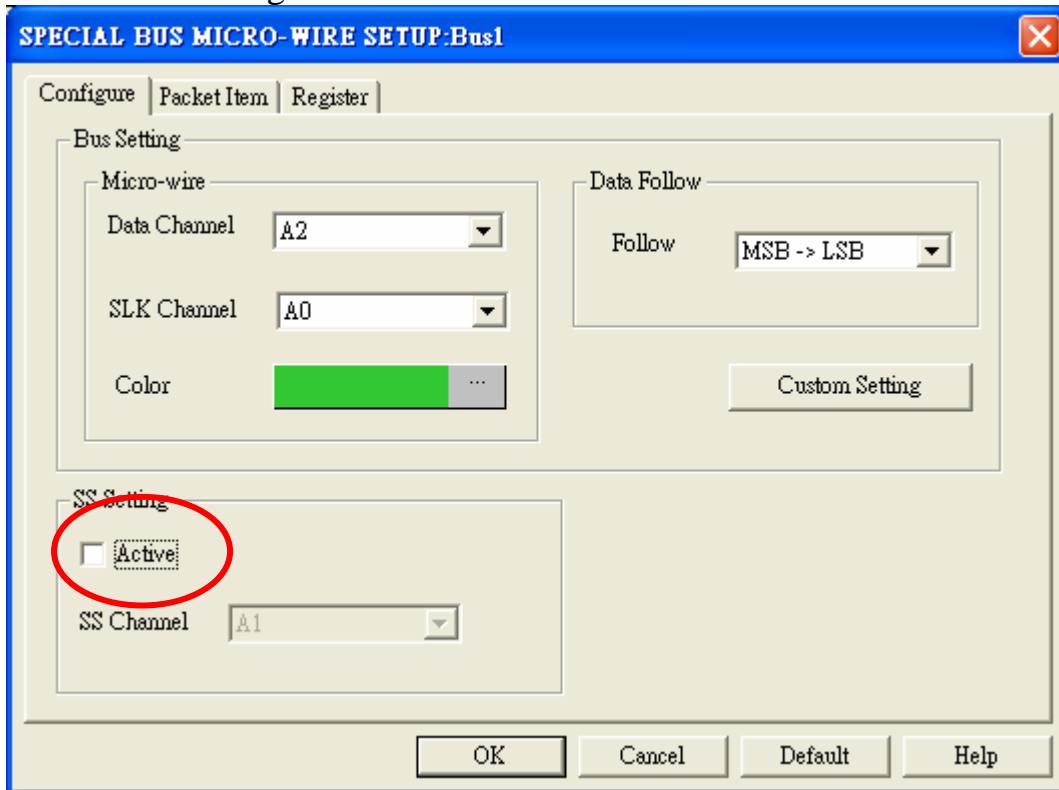
STEP 6. At First, select the channels for Data, SKL and SS)



STEP 7. Starting decoding after ensuring the follow direction.

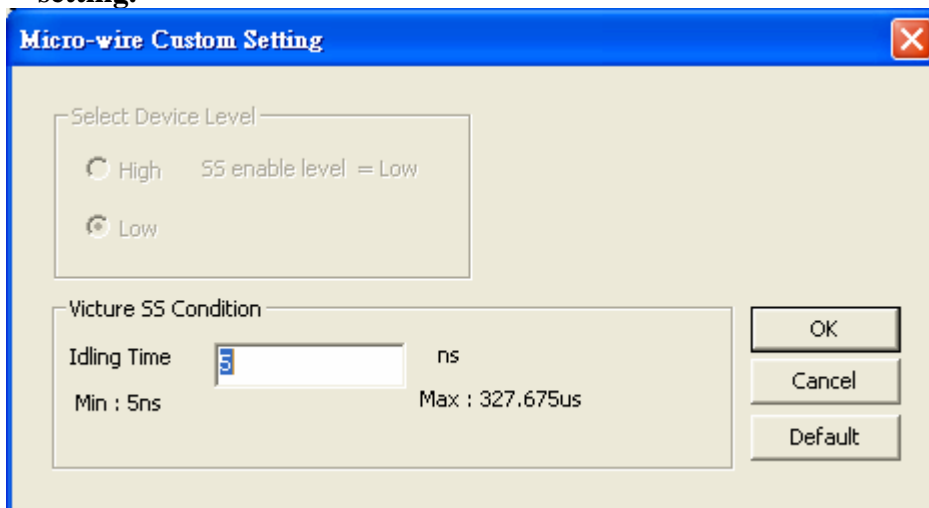


STEP 8. When SS setting is unnecessary, please remove Active option. Then, press “Custom Setting”.

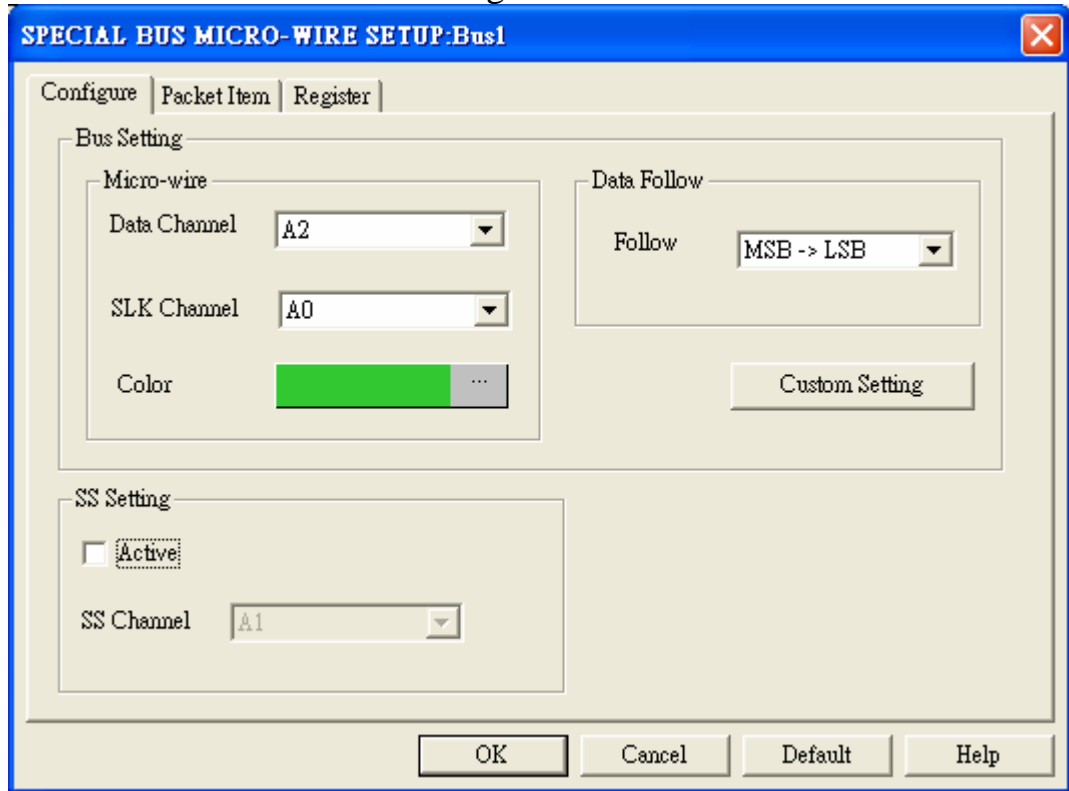


STEP 9. Custom Setting

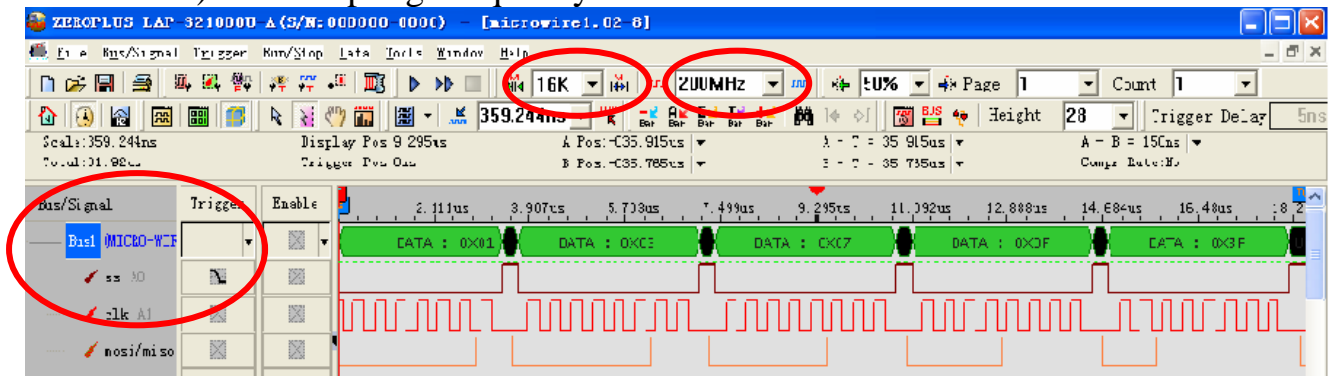
Setting standby time. We suggest the duration is longer than CLK. Press “OK” to complete setting.



STEP 10. Press “OK” to start decoding.



STEP 11. Following picture shows that the completion of bus decoding. The conditions are set as that Low lever Trigger on SS(A0), Memory depth is 1M(If you use logic Analyzer type: LAP-16128 or LAP-32128, please set memory depth as 128K) and Sampling Frequency is 200MHz.



Following picture shows the package list and waveforms displaying.

