



孕龍科技股份有限公司
Zeroplus Technology Co., Ltd.

SPECIFICATION

MODEL: B09021-LAP-OPENTHERM 2.2-M

PART NO: _____

VERSION: **V1.00**

Approver		Check	Design
GM	PM		

Customer Confirm

* Please fax the file to
ZeroPlus Technology after
signing .

2F, NO.123, Jian Ba Rd,
Chung Ho City, Taipei Hsian, R.O.C.

Tel:+886-2-66202225
Fax:+886-2-22234362



Content

1	Software Installation	3
2	User Interface	7
3	Operating Instructions.....	10

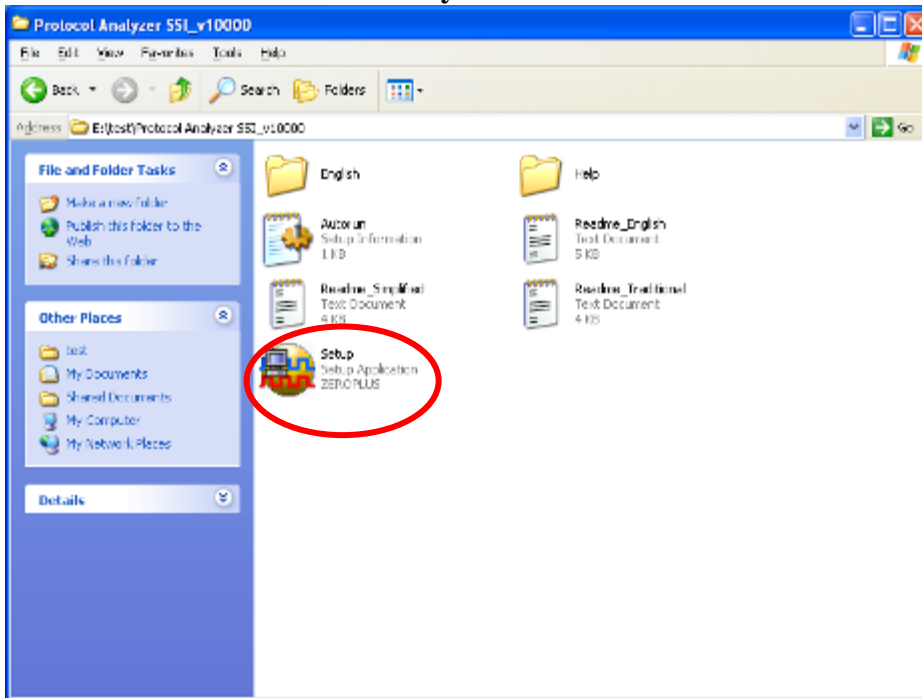


1 Software Installation

Please install the software as the following steps:

- ※ Remark: 1. The installation steps for all protocol analyzers are the same; you can complete the installation by following procedures. Following is an example on how to install protocol analyzer SSI.
- ※ Remark: 2. We won't have additional notice for you, when there is any modification of the module specification. If there is some unconformity caused by the module version upgrade, users should take the module software as the standard.

STEP 1. Install Protocol Analyzer Module.

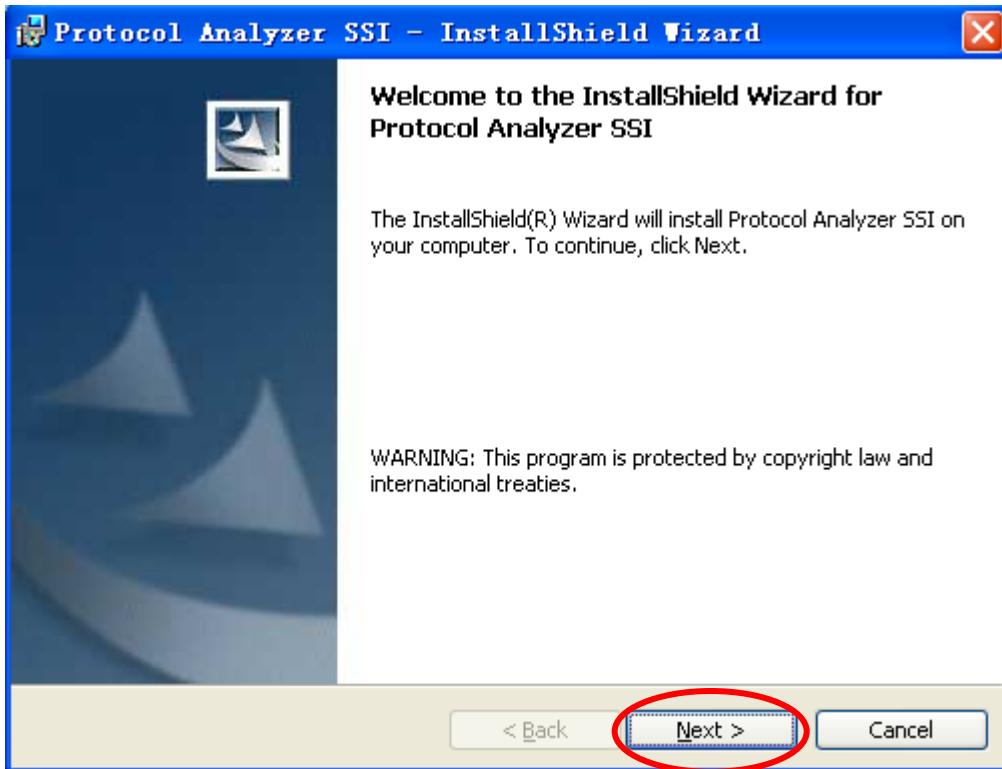


STEP 2. Click Install.

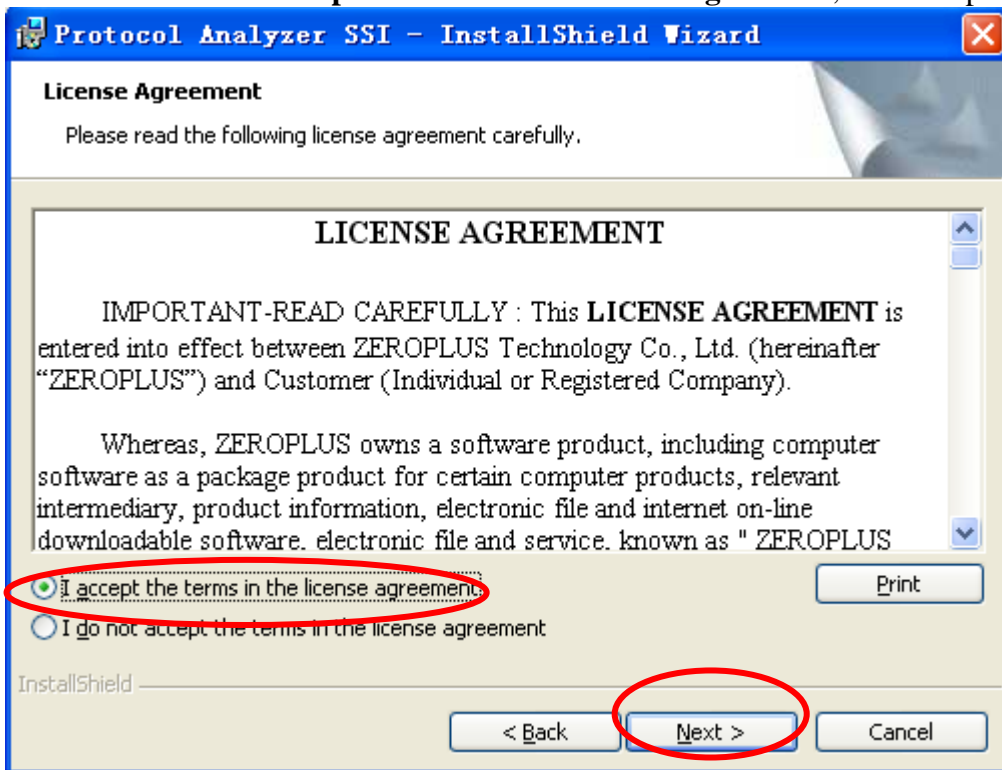




STEP 3. Click Next.



STEP 4. Select I accept the terms in the license agreement, and then press Next.





STEP 5. Fill in users' information in the below dialog box and click **Next**.

Protocol Analyzer SSI - InstallShield Wizard

Customer Information

Please enter your information.

User Name:
sunshine

Organization:
zeroplus

Install this application for:

Anyone who uses this computer (all users)

Only for me (sunshine)

InstallShield

< Back **Next >** Cancel

STEP 6. First, select **Complete** and then click **Next**.

Protocol Analyzer SSI - InstallShield Wizard

Setup Type

Choose the setup type that best suits your needs.

Please select a setup type.

Complete
All program features will be installed. (Requires the most disk space.)

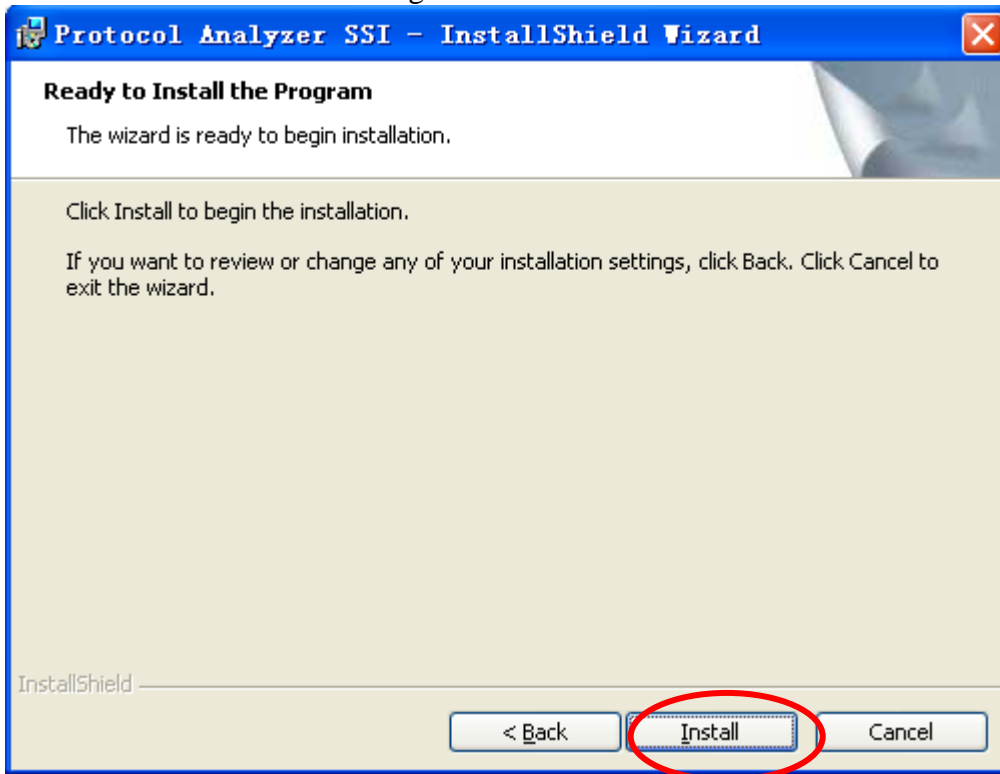
Custom
Choose which program features you want installed and where they will be installed. Recommended for advanced users.

InstallShield

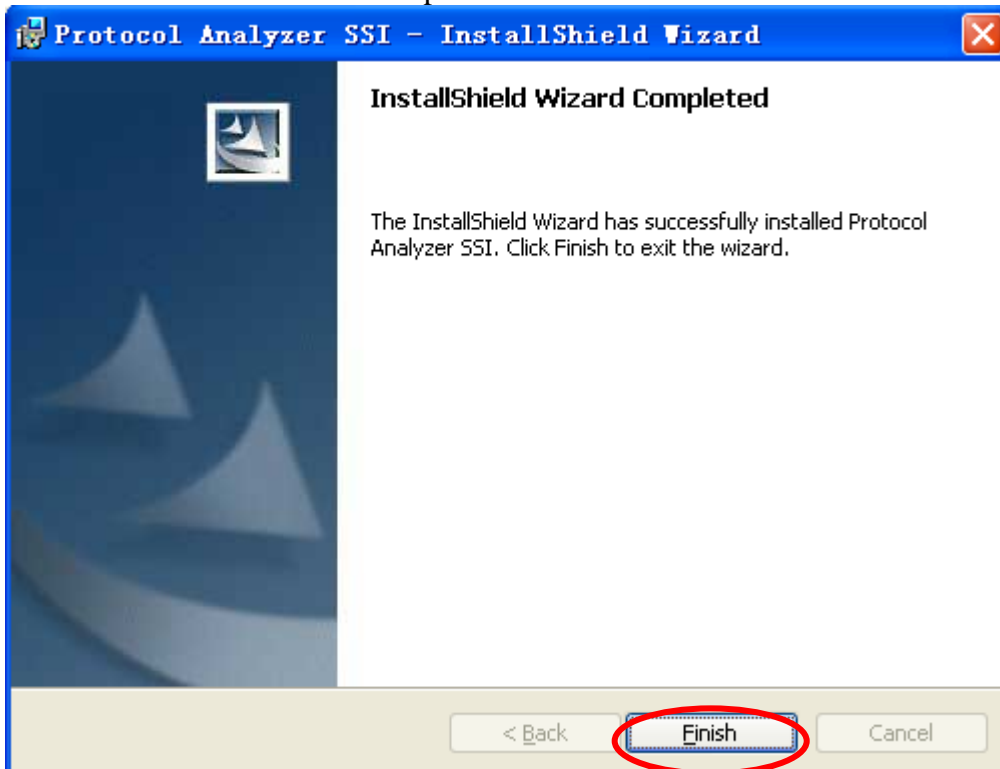
< Back **Next >** Cancel



STEP 7. Click **Install** to begin the installation.



STEP 8. Click **Finish** to complete the installation.

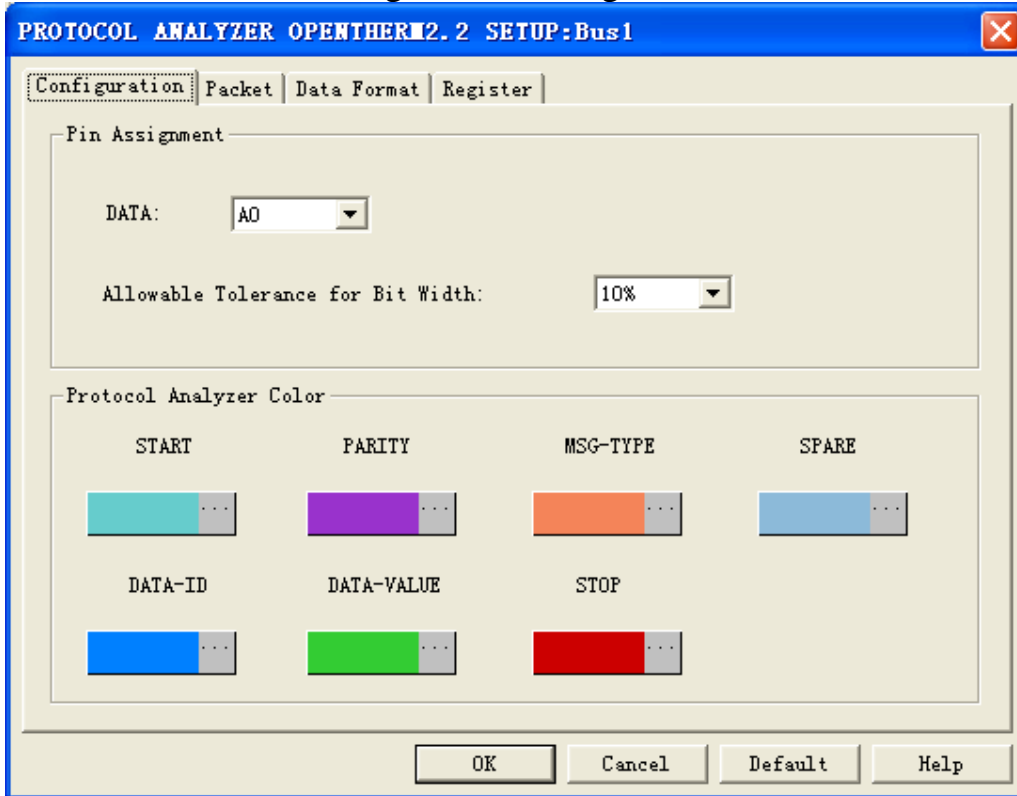




2 User Interface

In the configuration, please refer to the below images to select options of setting OPENTHERM2.2 module.

OPENTHERM2.2 Configuration Dialog Box



Pin Assignment:

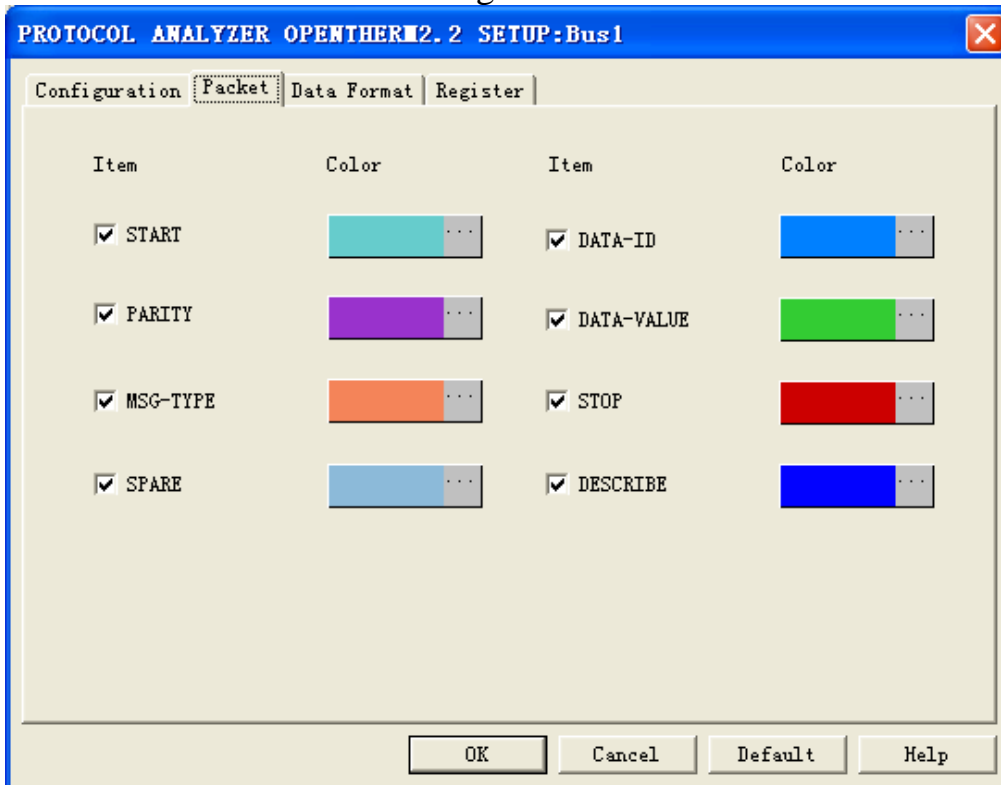
DATA: It is the Data Signal Line, and it needs only one channel.

Allowable Tolerance for Bit Width: It is the allowable tolerance value for the time width of one bit; the default is 10%. The standard Bit Width of the OPENTHERM2.2 is 1ms, and the 10% tolerance means that the Bit Width can be among 0.9ms-1.1ms. Otherwise, there are other two options, 5% and 15%, which can be selected from the pull-down menu.

Protocol Analyzer Color: The Protocol Analyzer Color can be varied by users.

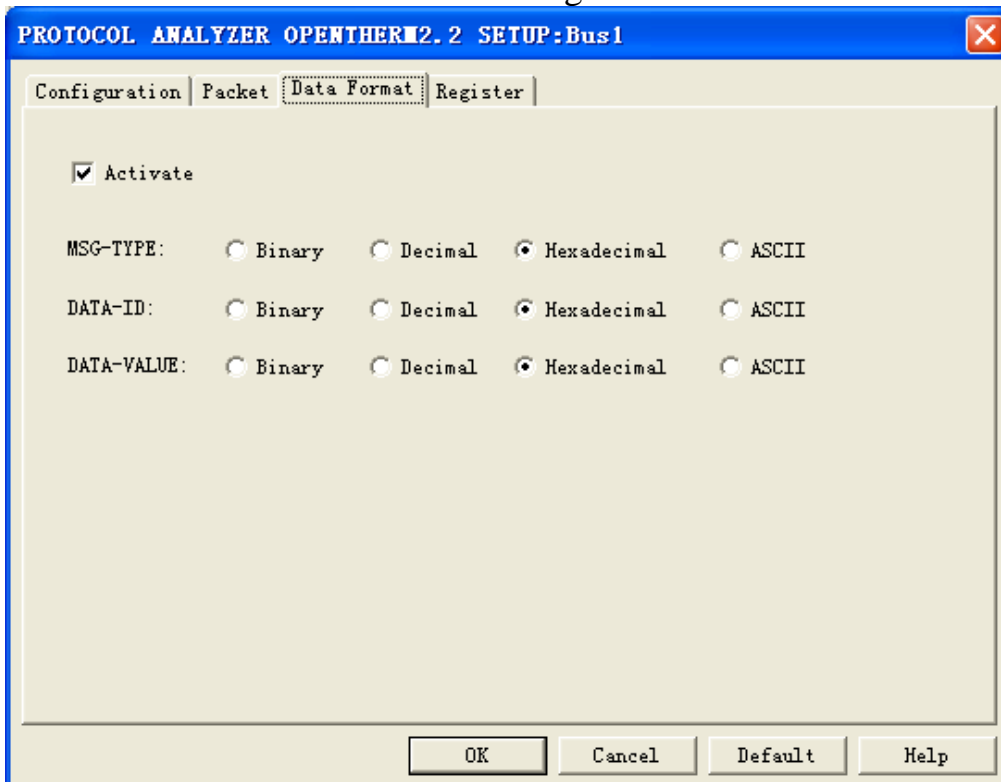


OPENTHERM2.2 Packet Dialog Box



In the packet part, users can set the items and colors as users' requirements.

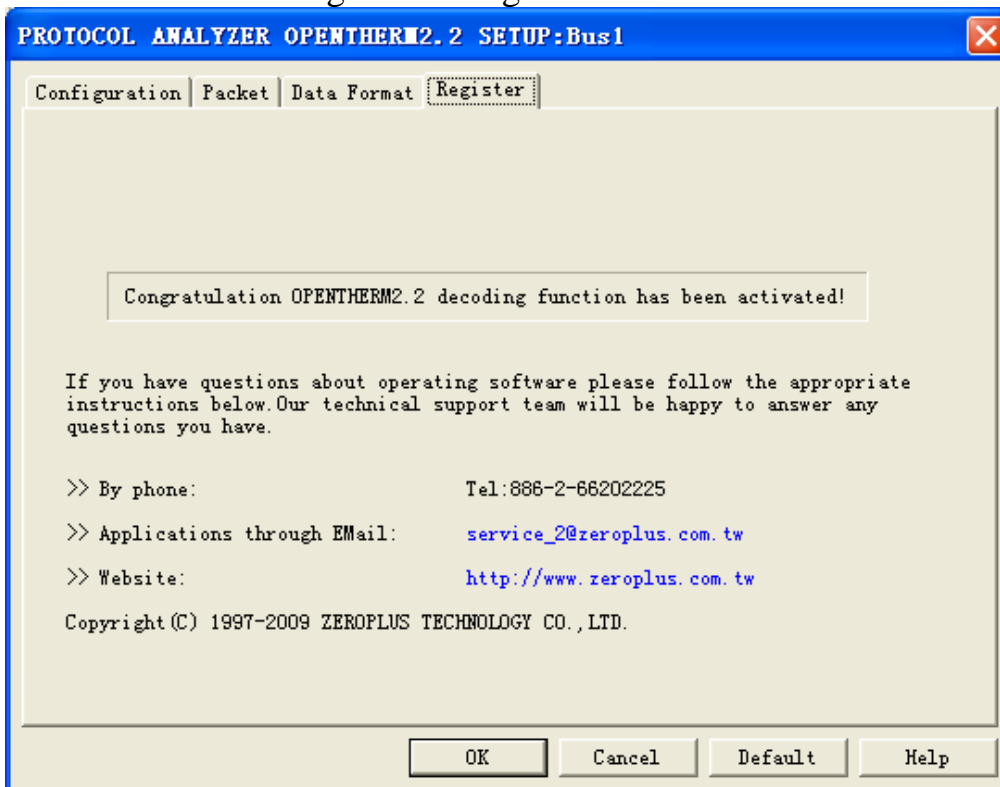
OPENTHERM2.2 Data Format Dialog Box



Users can set the Data Format of the MSG-TYPE, DATA-ID and DATA-VALUE as their requirements. When selecting the option, Activate, the data formats are decided by the settings in the Protocol Analyzer; when not selecting the option, Activate, the data formats are decided by the settings in the main program.



OPENTHERM2.2 Register Dialog Box

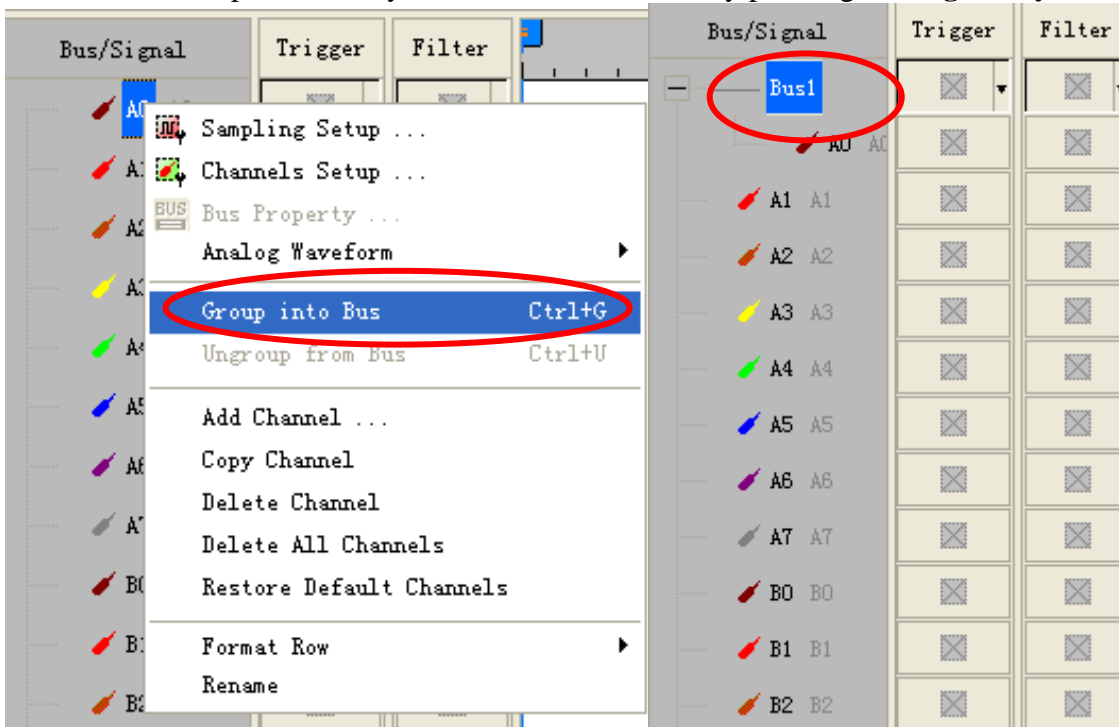


There is written ZeroPlus company information. If you have any questions about software operations, you can contact ZeroPlus by Telephone or Email.

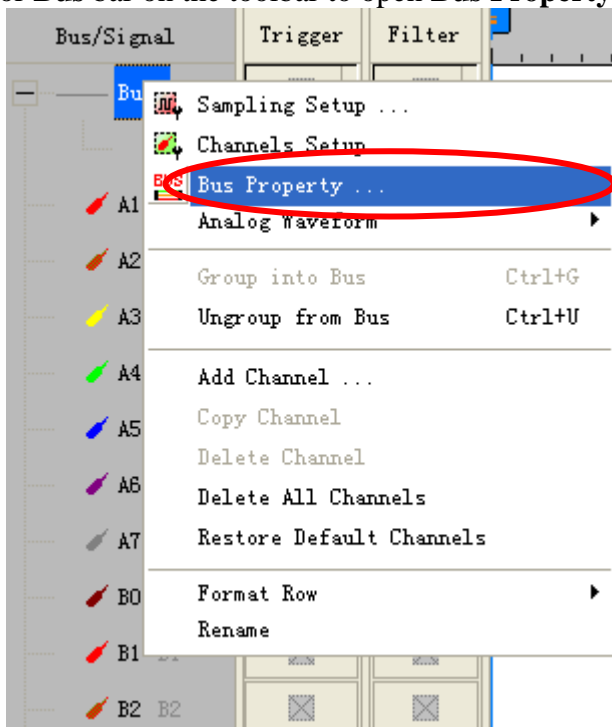


3 Operating Instructions

STEP 1. Group the unanalyzed channels into **Bus1** by pressing the **Right Key** on the mouse.

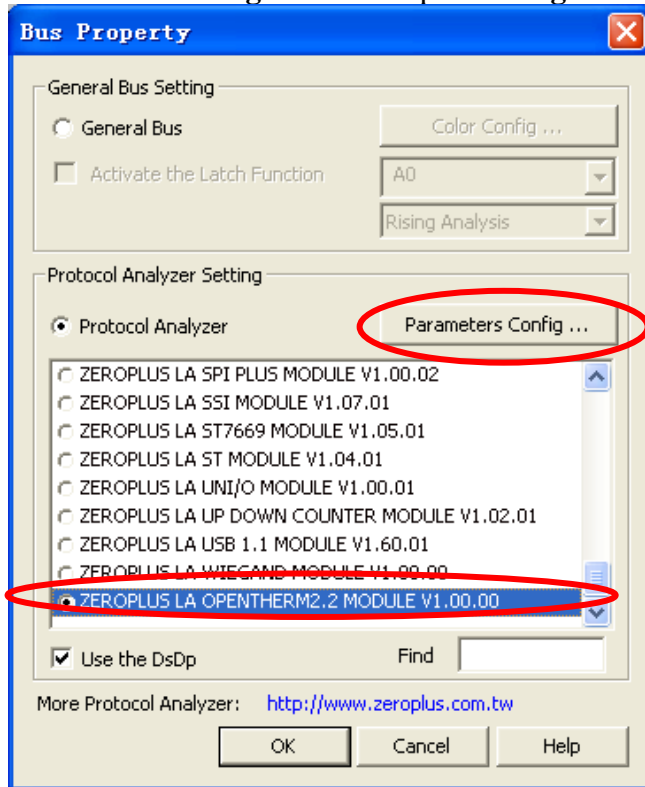


STEP 2. Select **Bus1**, and press **Right Key** on the mouse to list the menu, then press **Bus Property** or **Bus bar** on the toolbar to open **Bus Property** dialog box.

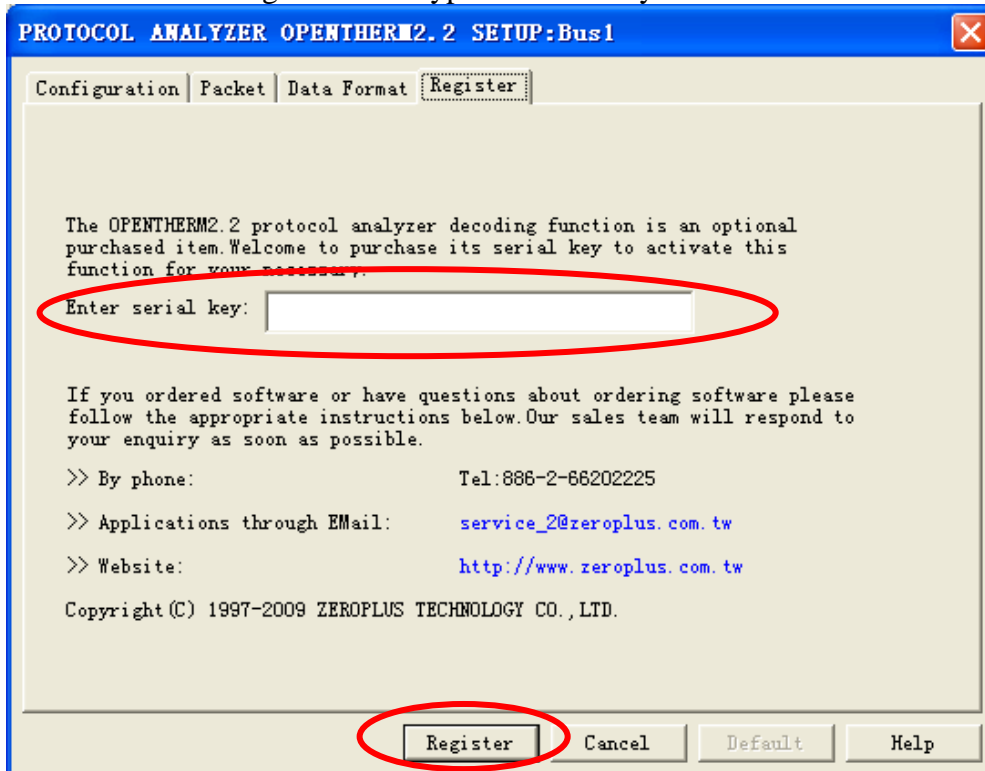




STEP 3. For Protocol Analyzer OPENTHERM2.2 Parameters Configuration, select Protocol Analyzer, and then choose **ZEROPLUS LA OPENTHERM2.2 MODULE V1.00.00**. Next click **Parameters Configuration** to open **Configuration** dialog box.

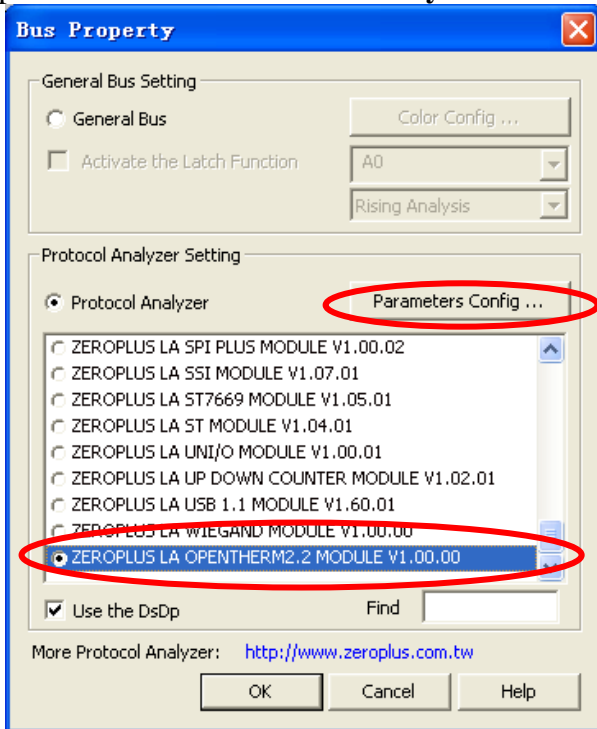


STEP 4. Press Register tab to type the serial key number of **OPENTHERM2.2**. Then, press **Register**.

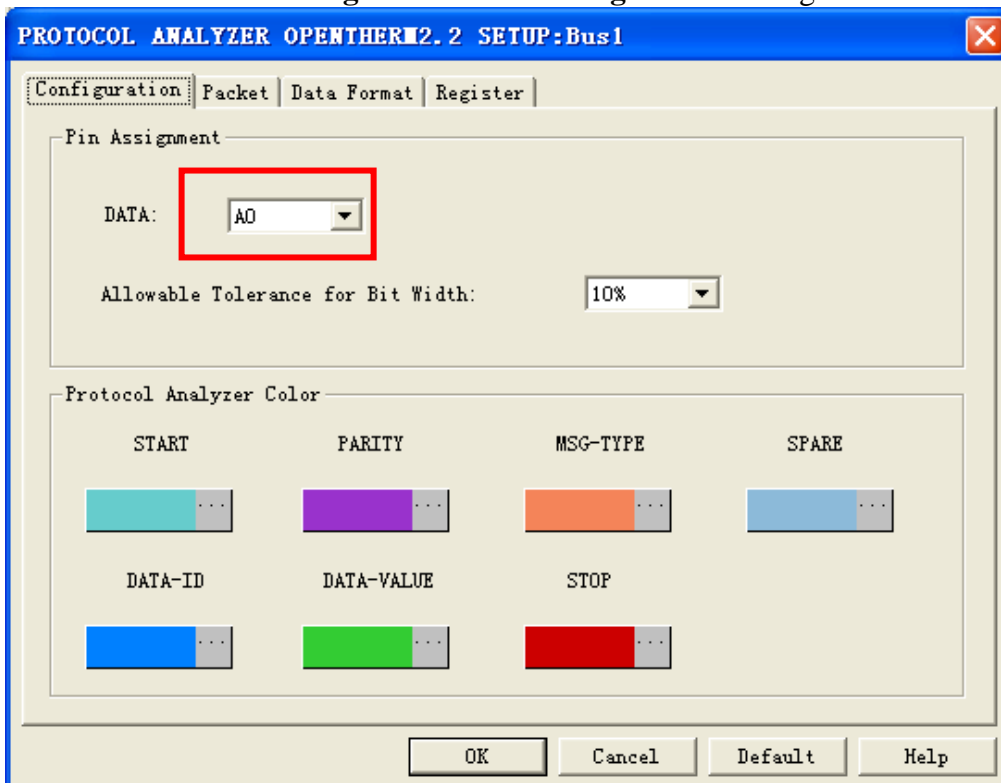




STEP 5. Click **Parameters Configuration** again, and open the Configuration dialog box to set the parameters for the **Protocol Analyzer OPENTHERM2.2**.

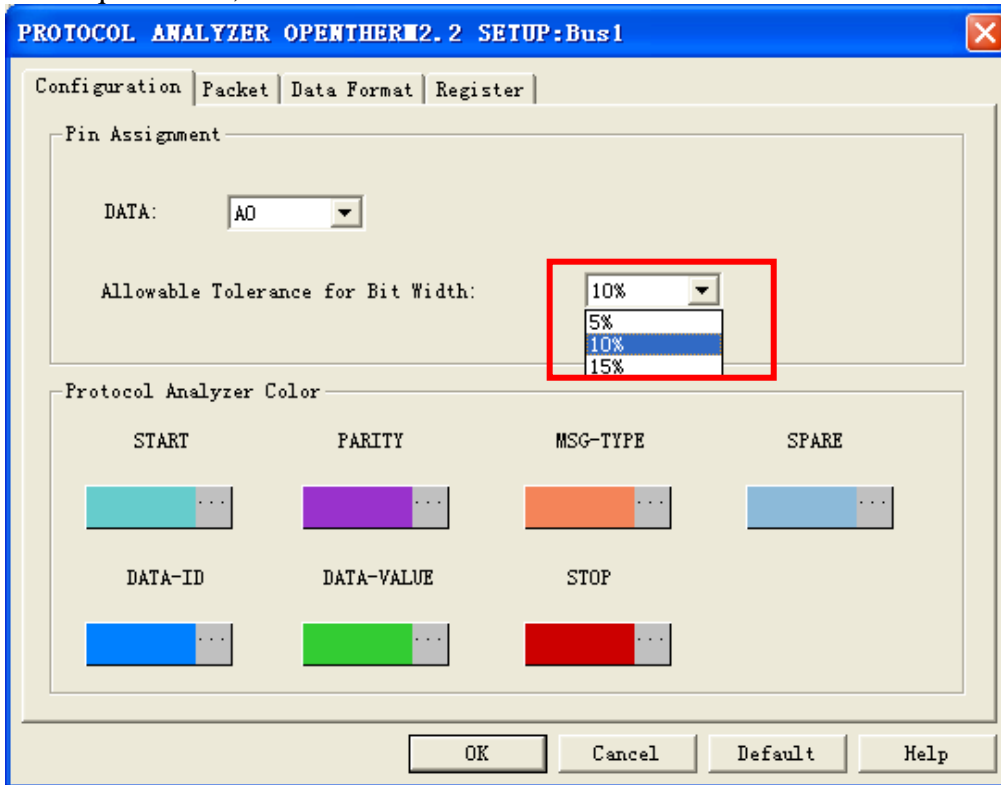


STEP 6. Set the **Pin Assignment** in the **Configuration** dialog box.

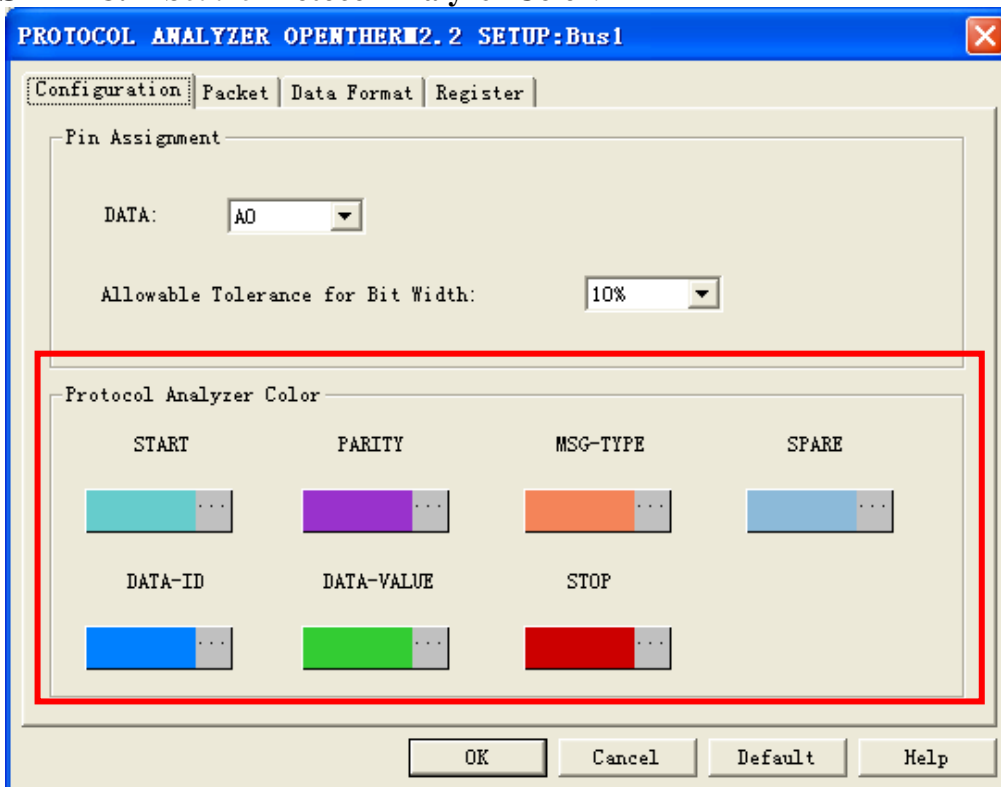




STEP 7. In the **Configuration** dialog box, users can set the **Allowable Tolerance for Bit Width** as their requirements, and the default is 10%.



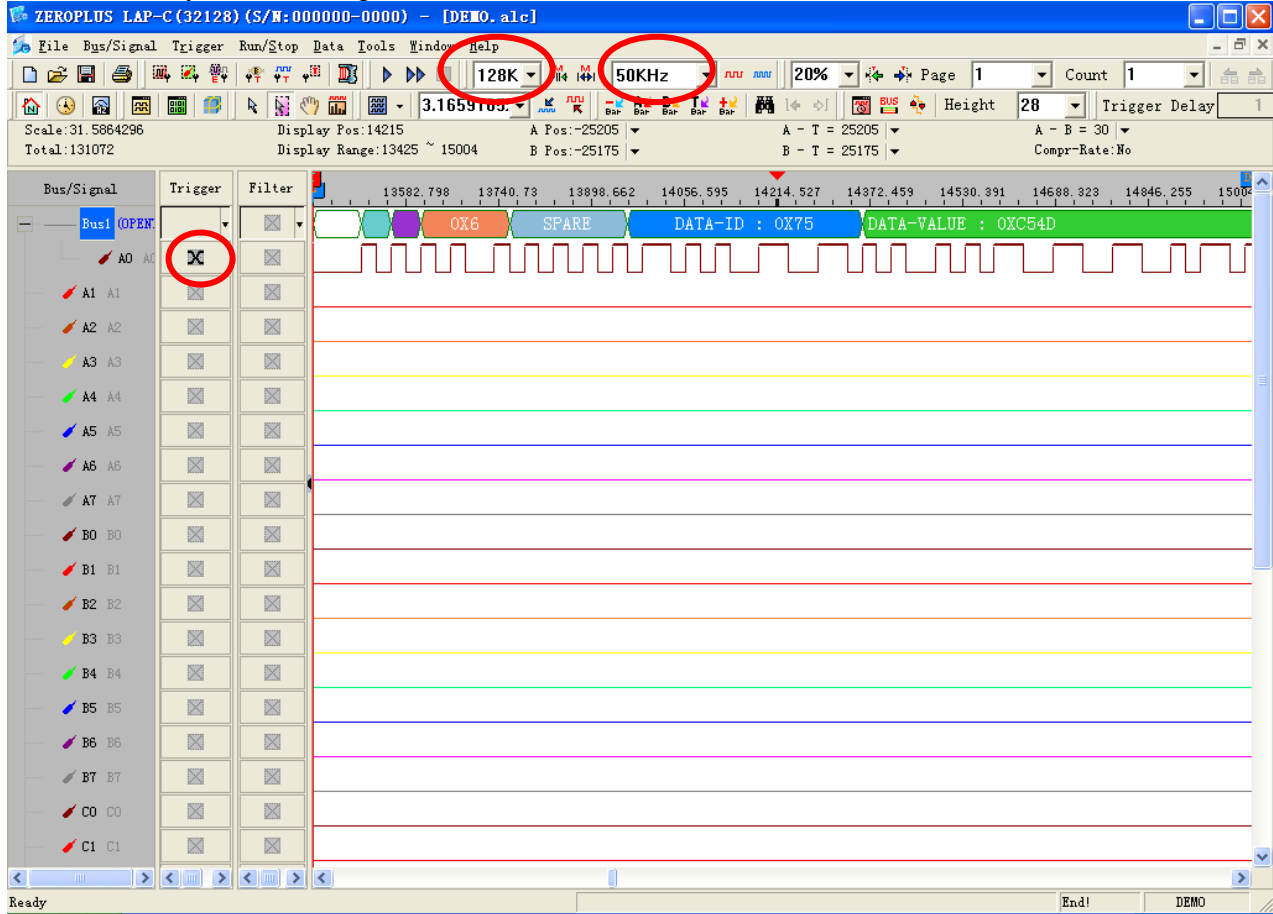
STEP 8. Set the **Protocol Analyzer Color**.





STEP 9. Following pictures show the completion of the protocol analyzer decoding and the packet list. The trigger condition is set as Either Edge; the memory depth is 128K; the sampling frequency is 50KHz.

Protocol Analyzer Decoding





Packet List

