



**孕龍科技股份有限公司**  
**ZeroPlus Technology Co., Ltd.**

# SPECIFICATION

**MODEL: PCI Specification**

**PART NO :** \_\_\_\_\_

**VERSION :** V1.00

Approver		Check	Design
GM	PM		

Customer Confirm

\* After signature you fax to zeroplus company , please .



# Content

1	Software Installation .....	3
2	User Interface .....	8
3	Operating Instructions .....	10



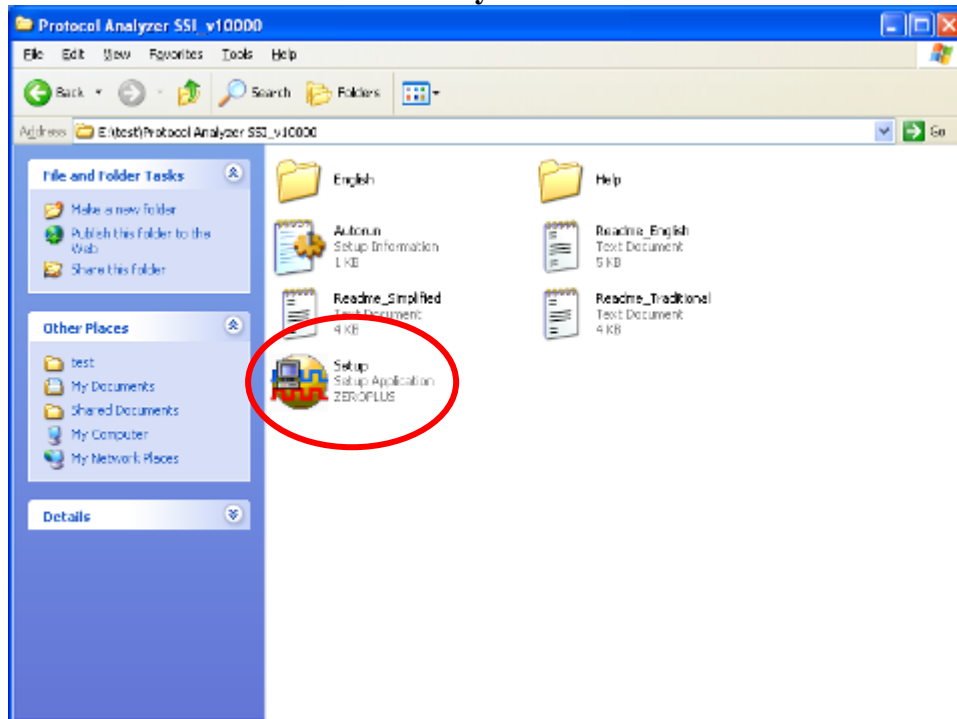
## 1 Software Installation

Please install the software as the following steps:

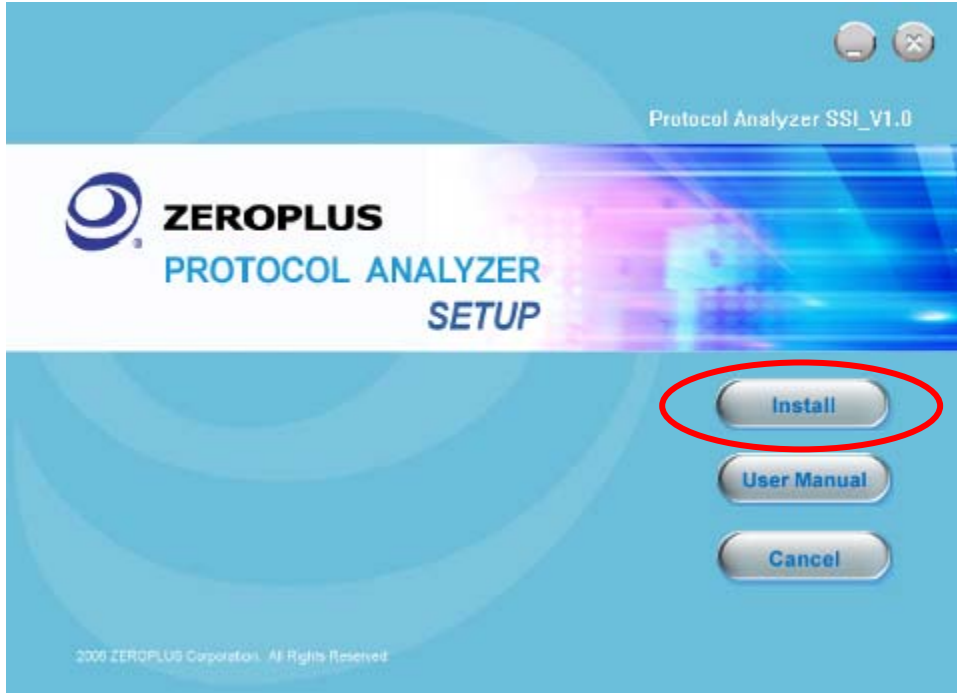
※ Remark: 1. The installation steps for all protocol analyzers are the same; you can complete the installation by following procedures. Following is an example on how to install protocol analyzer SSI.

※ Remark: 2. We won't have additional notice for you, when there is any modification of the module specification. If there is some unconformity caused by the module version upgrade, users should take the module software as the standard.

### STEP 1. Install Protocol Analyzer Module.

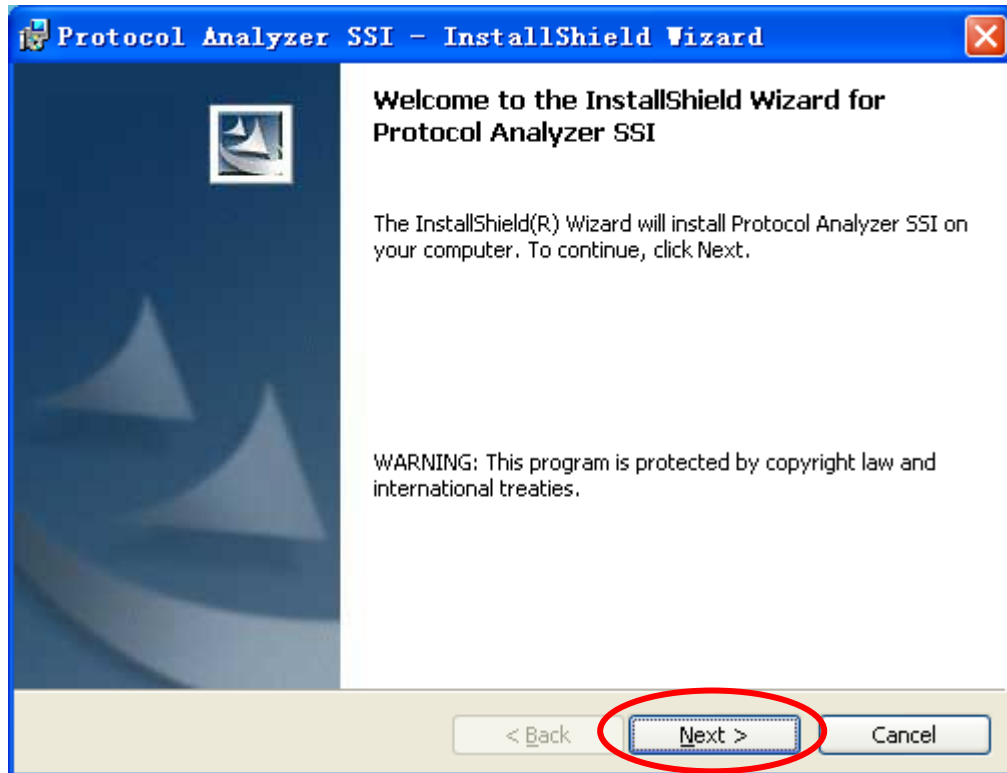


### STEP 2. Click Install.

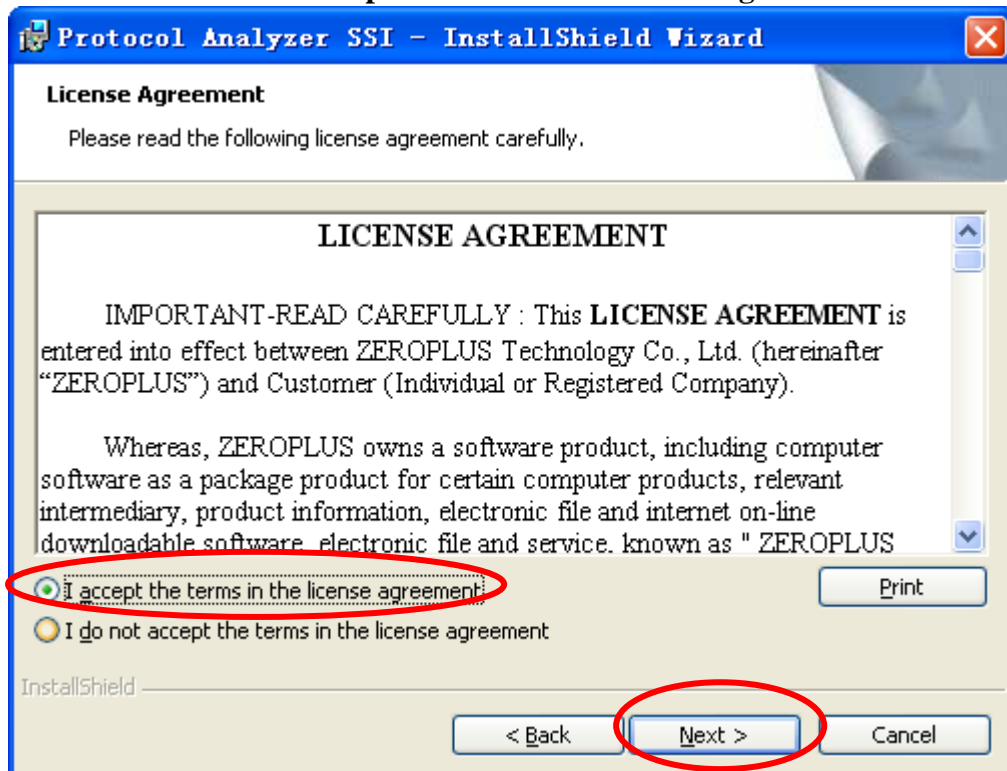




**STEP 3.** Click Next.

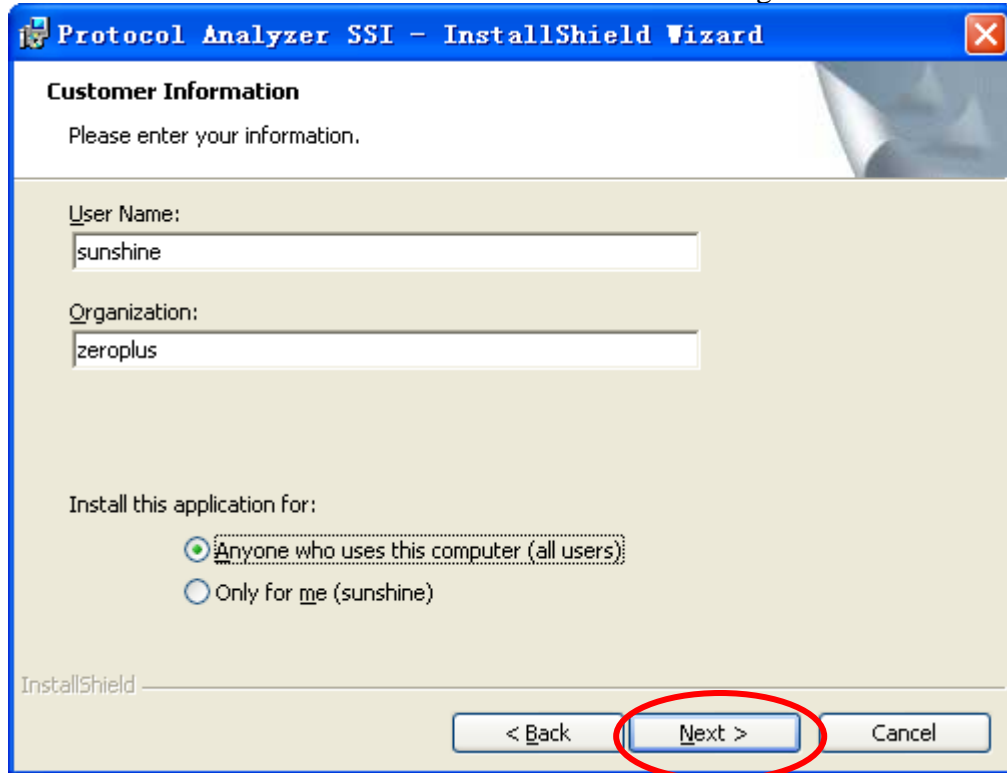


**STEP 4.** Select **I accept the terms in the license agreement**, and then press Next.

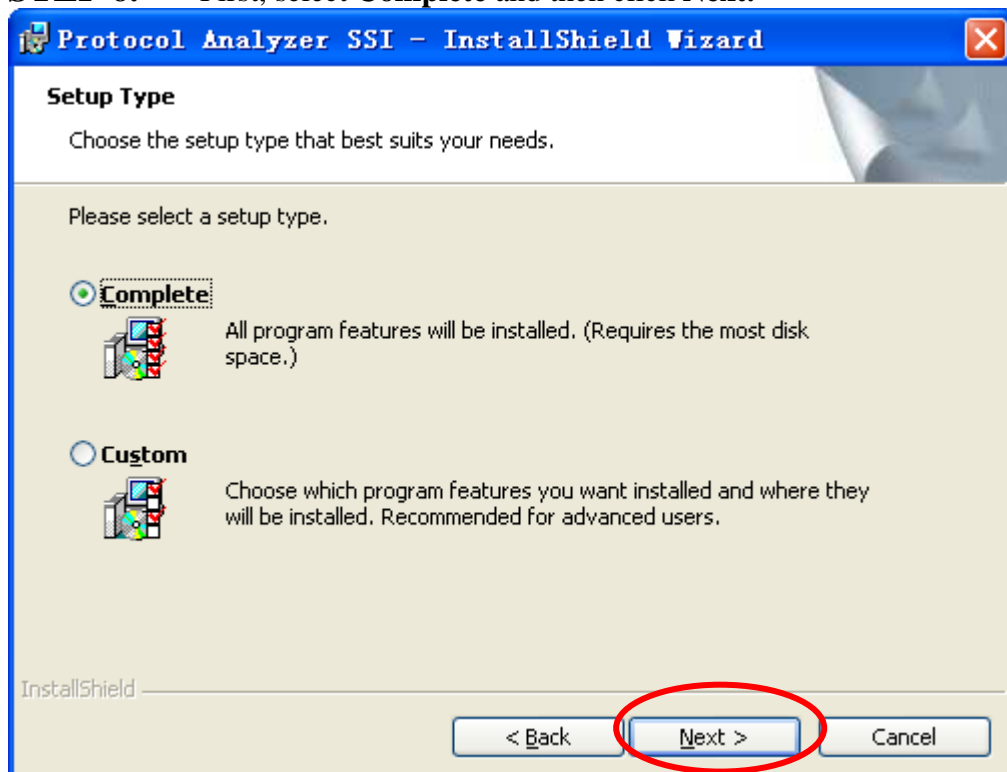




**STEP 5.** Fill in users' information in the below dialog box and click **Next**.

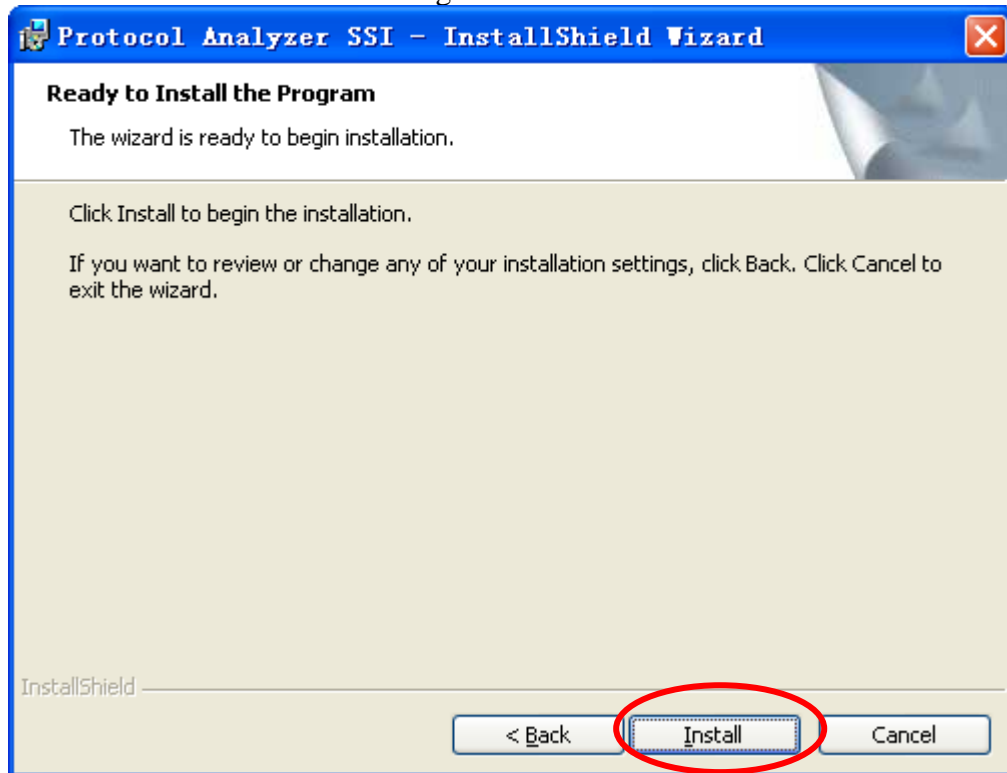


**STEP 6.** First, select **Complete** and then click **Next**.

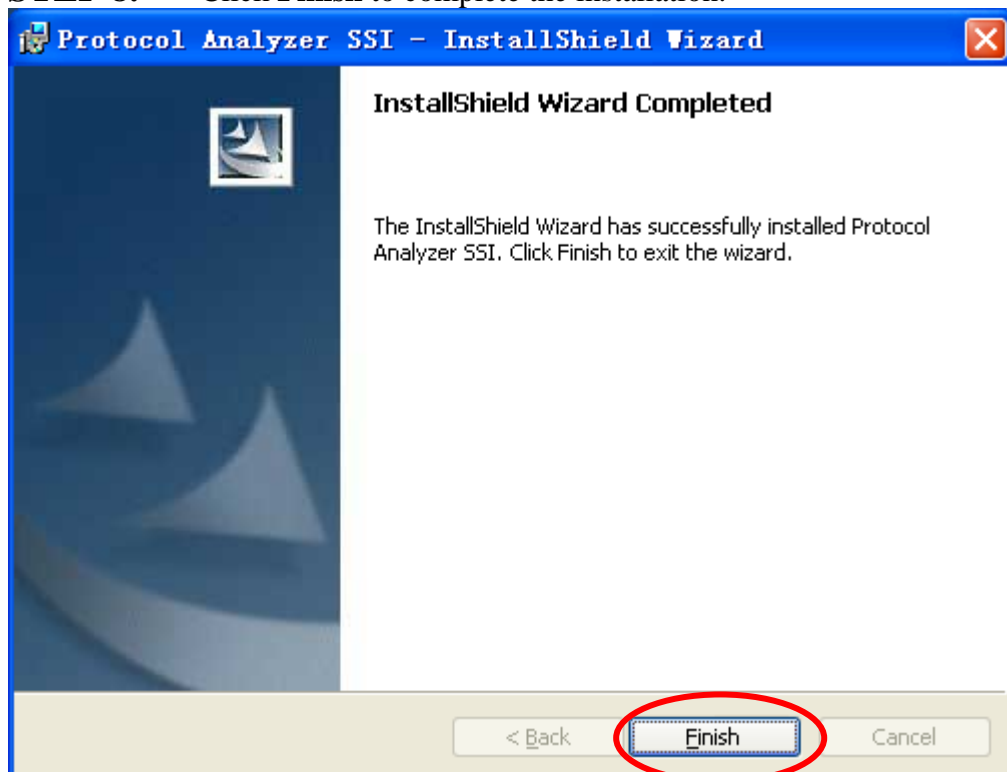




**STEP 7.** Click **Install** to begin the installation.



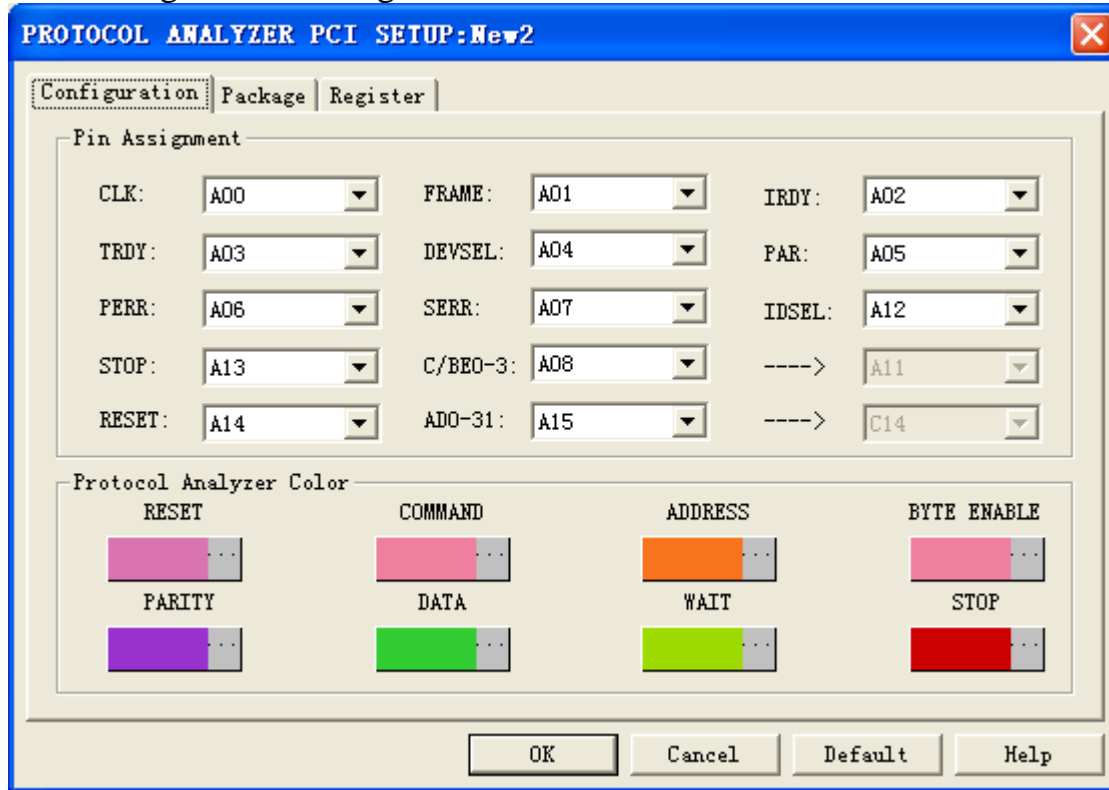
**STEP 8.** Click **Finish** to complete the installation.



## 2 User Interface

In the configuration dialog box, please refer to the below images to select options of setting **PCI MODULE**.

### PCI Configuration Dialog Box



**Pin Assignment:** There are 15 channels. Hereinto, the gray channels cannot be selected, and the other channels can be set as users' requirements. At the same time, the set result will affect the correctness of the decoding.

**CLK:** It is the transmission channel of the clock signal; its default is A00.

**FRAME:** It is the transmission channel of the frame period signal; its default is A01.

**IRDY:** It is the transmission channel which denotes whether the host device signal has been ready; its default is A02.

**TRDY:** It is the transmission channel which denotes whether the slave device signal has been ready; its default is A03.

**DEVSEL:** It is the transmission channel of the device address signal; its default is A04

**PAR:** It is the transmission channel of the data even parity signal; its default is A05.

**PERR:** It is the transmission channel which reports the even parity error; its default is A06.

**SERR:** It is the transmission channel which reports the system error; its default is A07.

**IDSEL:** It is the transmission channel of Initialization Device Select which is used as a chip select during the read and write operation of the configuration room; its default is A12.

**STOP:** It is the transmission channel of stopping the data transmission signal; its default is A13.

**RESET:** It is the transmission channel of resetting the asynchronous signal; its default is A14.

**C/BE0-3:** It consists of 4 consecutive channels; the default is A08 (It includes A08 and the next three consecutive channels). It is the transmission channel of COMMAND.

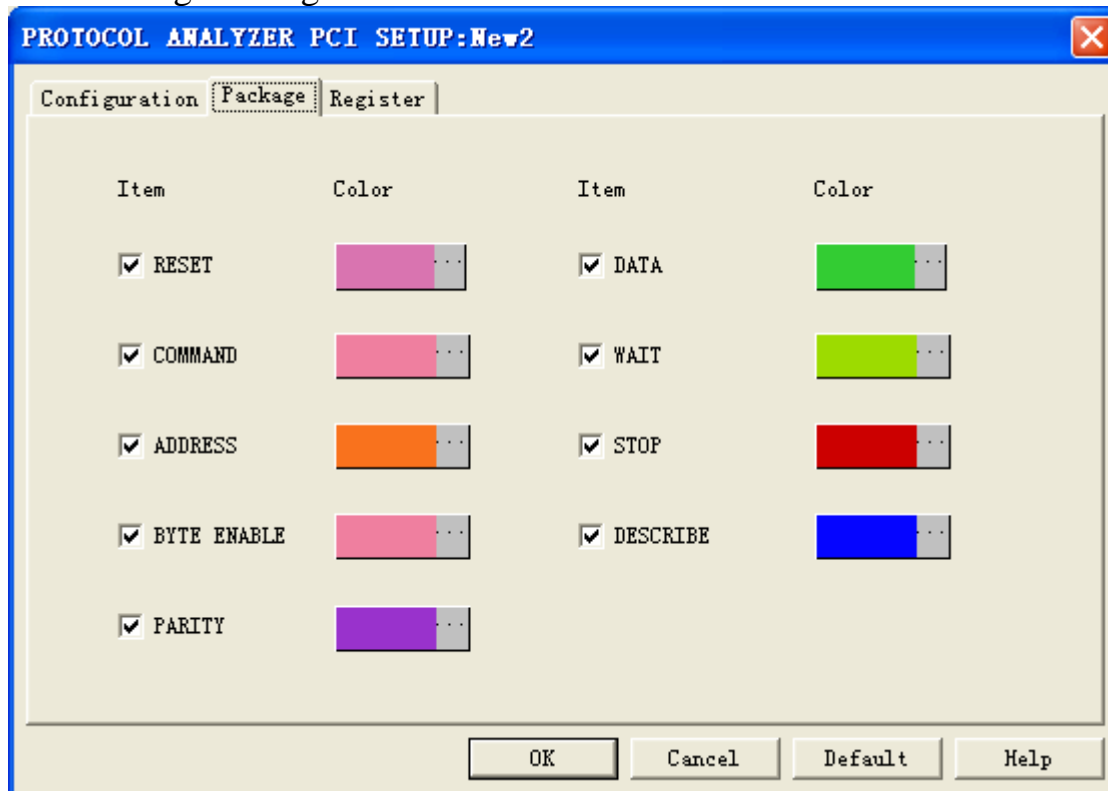
**AD0-31:** It consists of 32 consecutive channels; the default is A15 (It includes A15 and the next thirty-one consecutive channels). It is the transmission channel of ADDRESS or DATA.

**Protocol Analyzer Color:** Users can vary the color of the items according to their requirements.



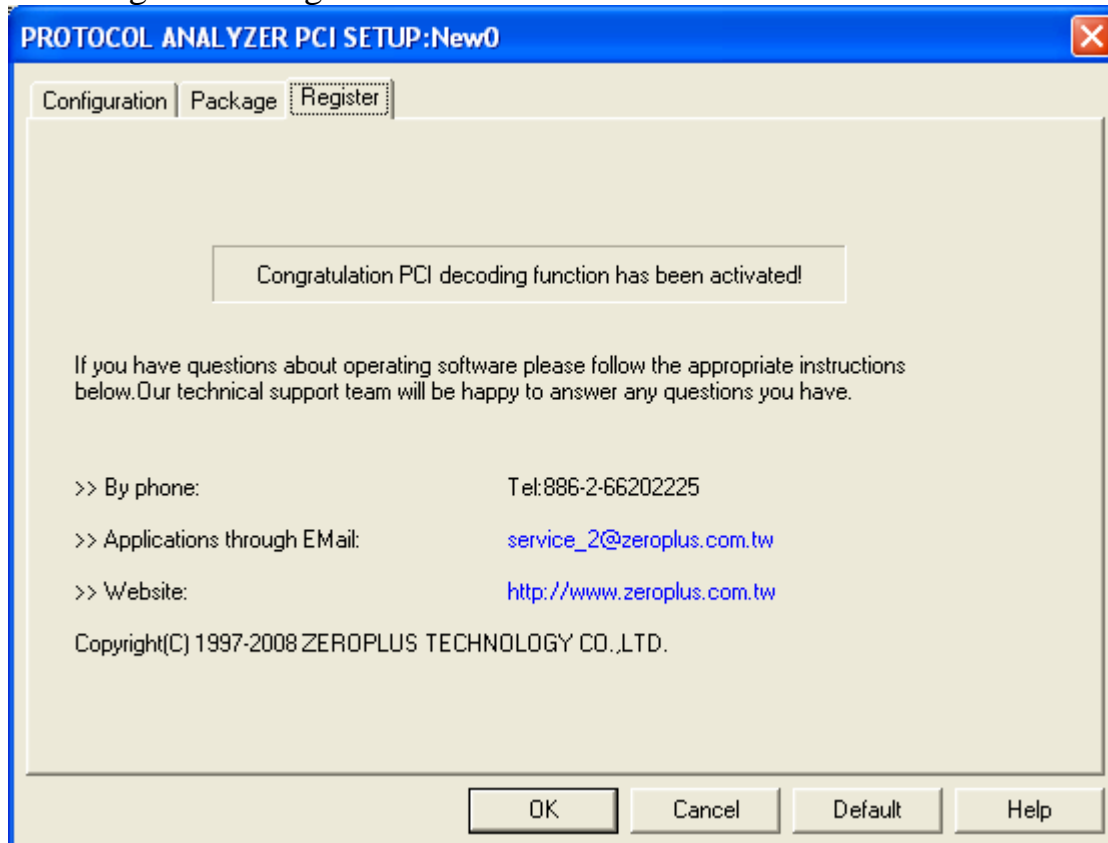


## PCI Package Dialog Box



Users can set the protocol analyzer color as their requirements.

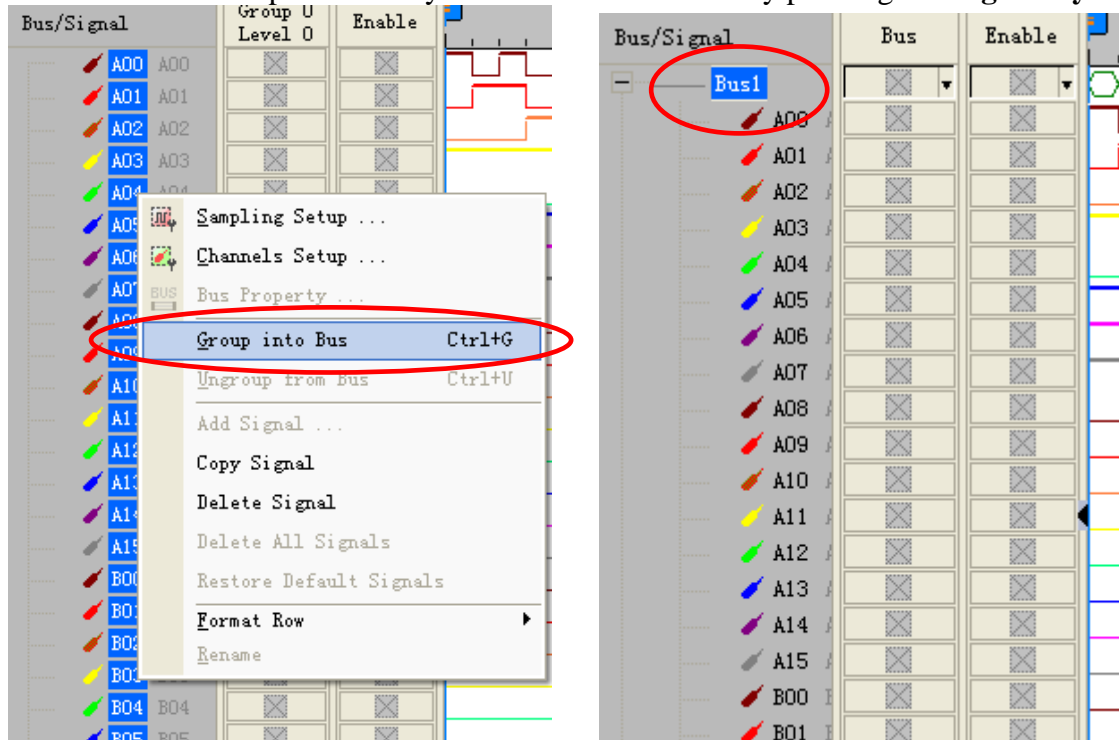
## PCI Register Dialog Box



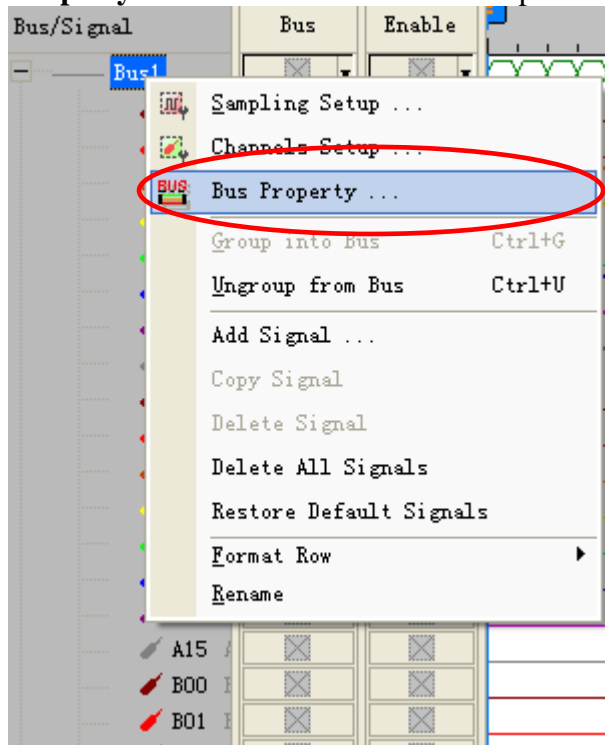
There is written ZeroPlus company information. If you have any questions about software operations, you can contact ZeroPlus by Telephone or Email.

### 3 Operating Instructions

**STEP 1.** Group the unanalyzed channels into **Bus1** by pressing the **Right Key** on the mouse.

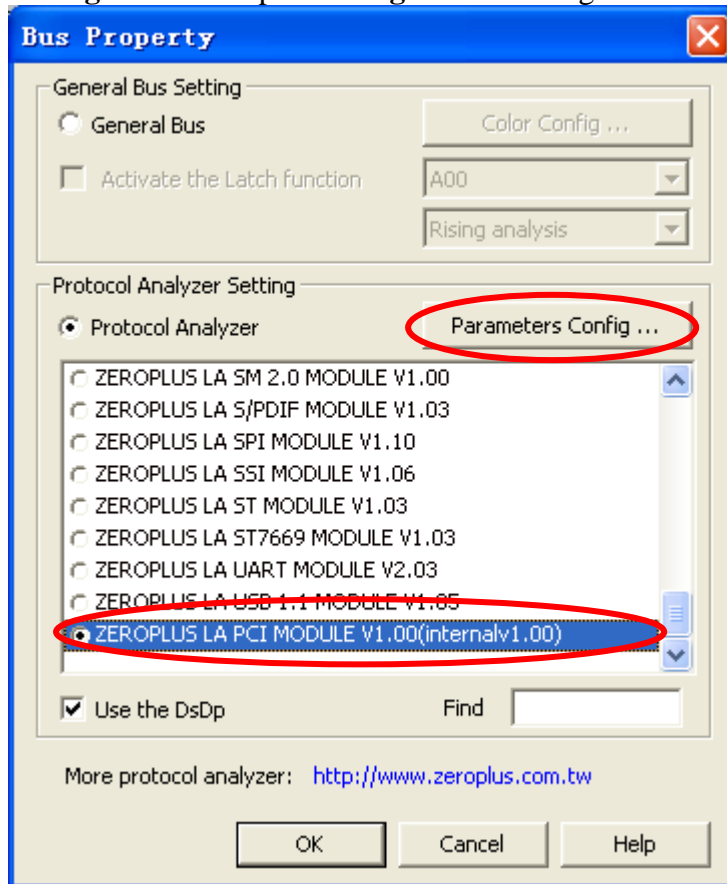


**STEP 2.** Select **Bus1**, then press **Right Key** on the mouse to list the menu, and then press **Bus Property** or **Bus bar** on the toolbar to open **Bus Property** dialog box.

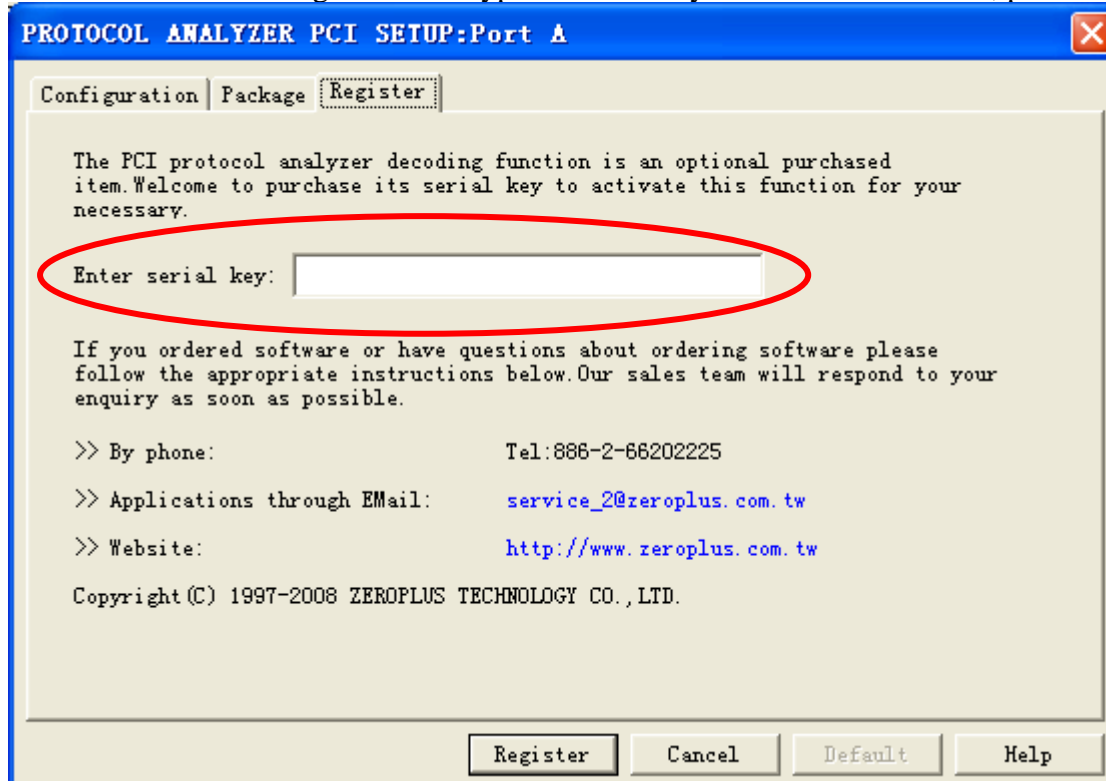




**STEP 3.** For Protocol Analyzer PCI Parameters Configuration, select Protocol Analyzer, and then select **ZEROPLUS LA PCI MODULE V1.00(internal V1.00)**. Next click **Parameters Configuration** to open **Configuration** dialog box.

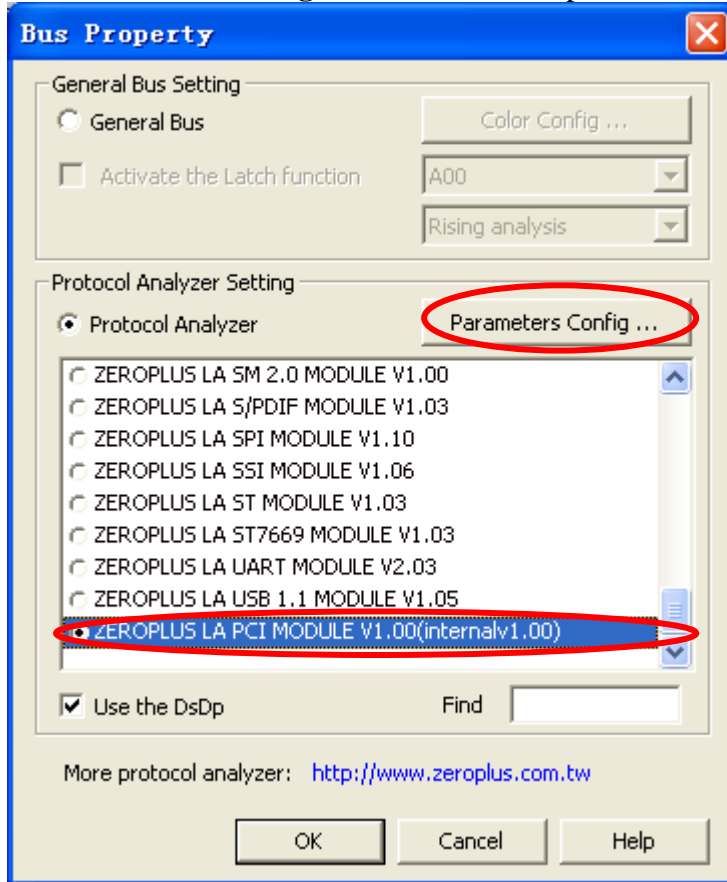


**STEP 4.** Click Register tab to type the serial key number of PCI. Then, press **Register**.

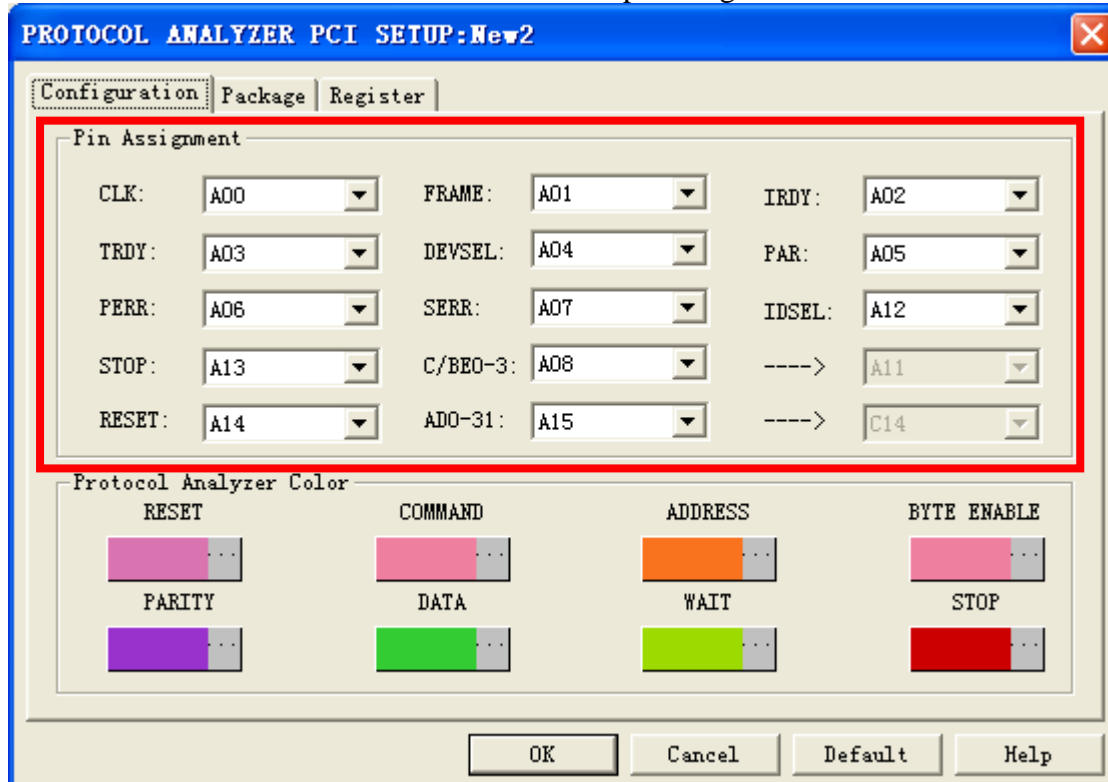




**STEP 5.** After completing **Register**, come back to the **Bus Property** dialog box, and then click the **Parameters Configuration** to start the protocol analyzer PCI setup.

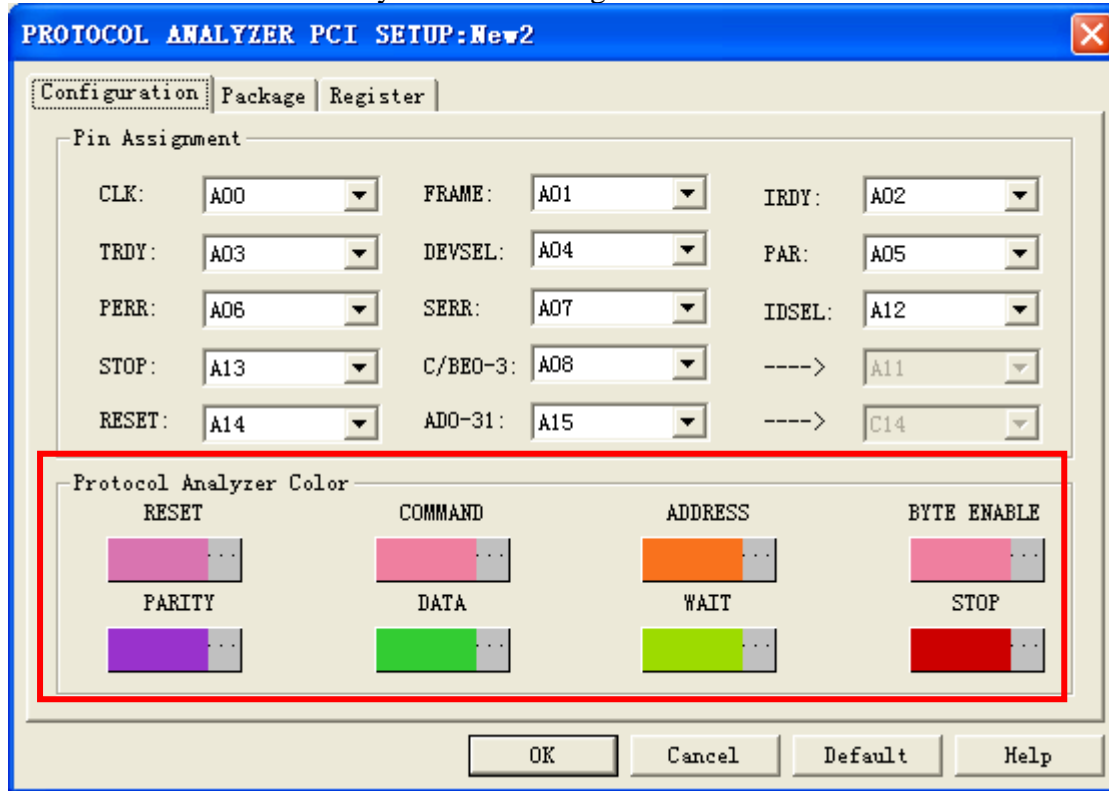


**STEP 6.** Set the channel of the PCI in the pin assignment section.





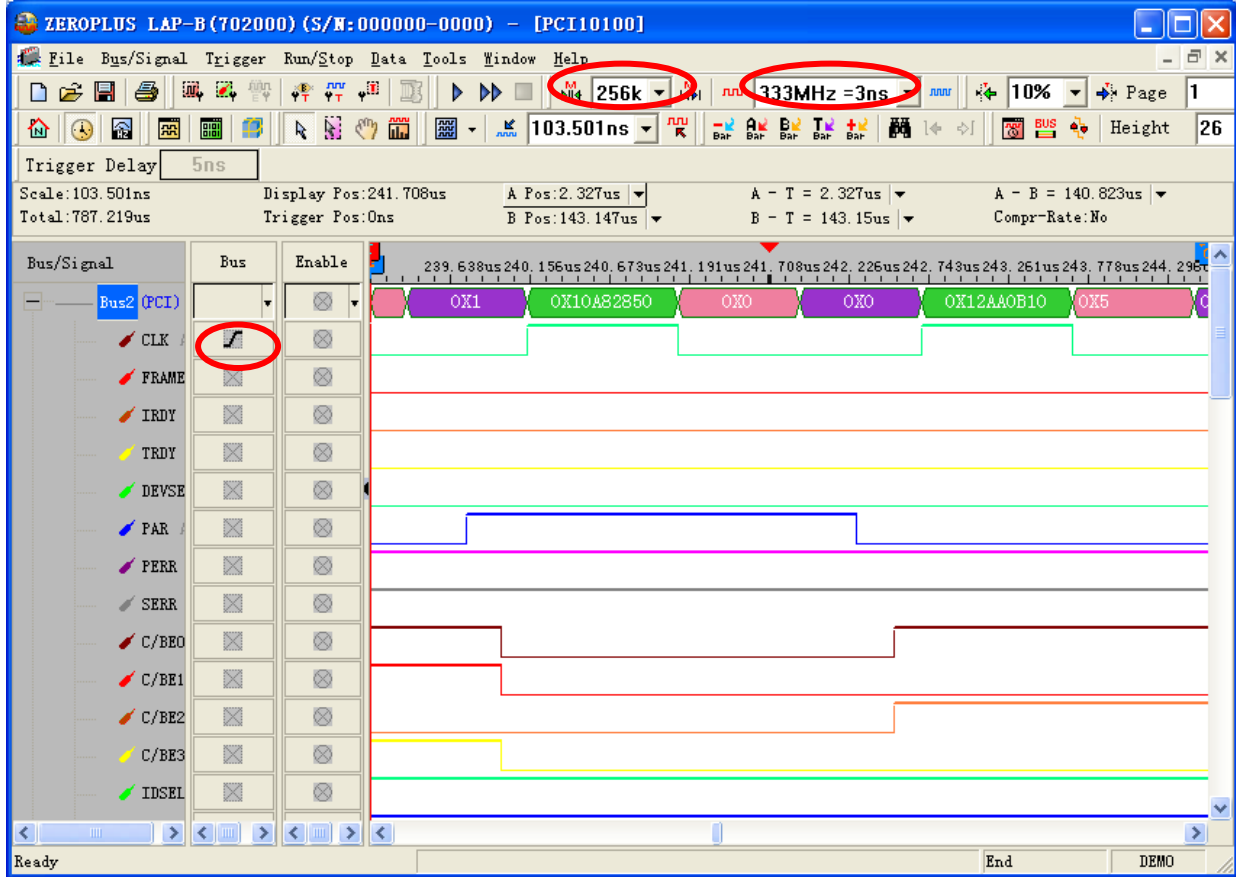
**STEP 7.** Protocol Analyzer Color settings.





**STEP 8.** Following pictures show the completion of the protocol analyzer decoding and the package list. The trigger condition is set as Rising Edge; the memory depth is 256K; the sampling frequency is 333MHz=3ns.

### Protocol Analyzer Decoding





## Package List

Setting... Flash Export Synch Parameter

Package #	Name	TimeStamp	RESET
1	Bus2(PCI)	-078.697us	RESET

Package #	Name	TimeStamp	Data	Length
2	Port D(General)	-078.697us	0X0000	787.213us

Package #	Name	TimeStamp	ADDRESS	COMMAND	PARITY	WAIT	DATA	BYTE ENABLE
3	Bus2(PCI)	135.081us	0X0208A948	0XA	0X0	WAIT	0X0208A948	0XA
	PARITY	DATA	BYTE ENABLE	PARITY	DATA	BYTE ENABLE	PARITY	DATA
	0X0	0X102A8A08	0XD	0X1	0X5028A84A	0X2	0X1	0X522A8B0A
	BYTE ENABLE	PARITY	DATA	BYTE ENABLE	PARITY	DATA	BYTE ENABLE	PARITY
	0X7	0X1	0X12A0A158	0XC	0X0	0X00820210	0X1	0X1

Ready End DEMO