



孕龍科技股份有限公司
Zeroplus Technology Co., Ltd.

Instrument Business Department

PECI Specification

Version: V1.00



Content

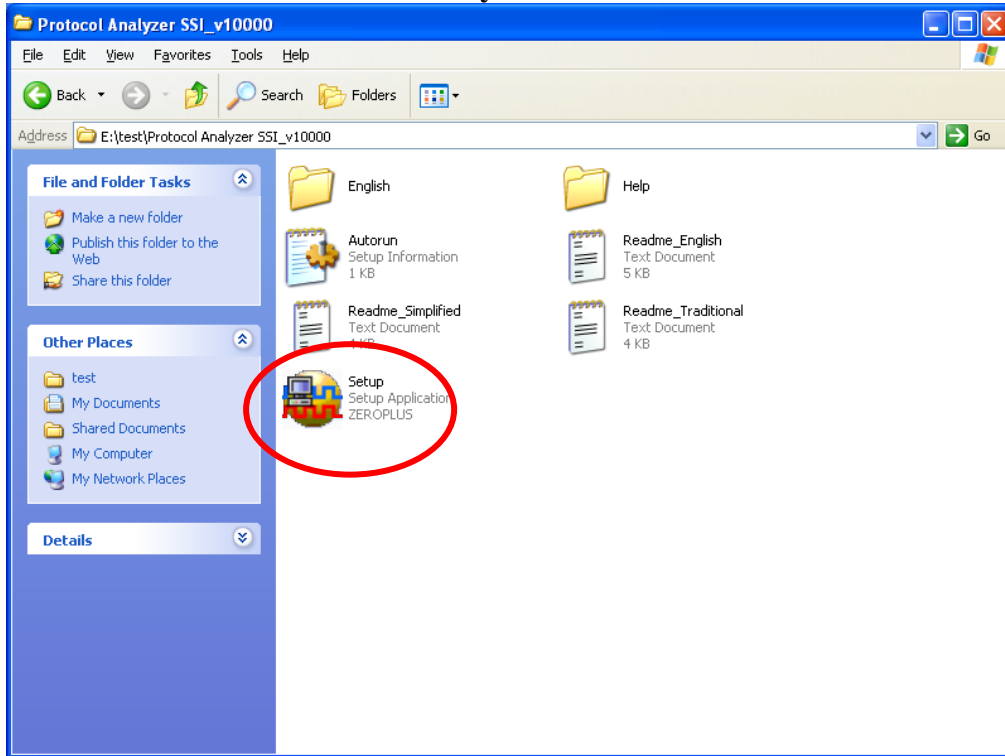
1	Software Installation	3
2	User Interface	7
3	Operating Instructions	9

1 Software Installation

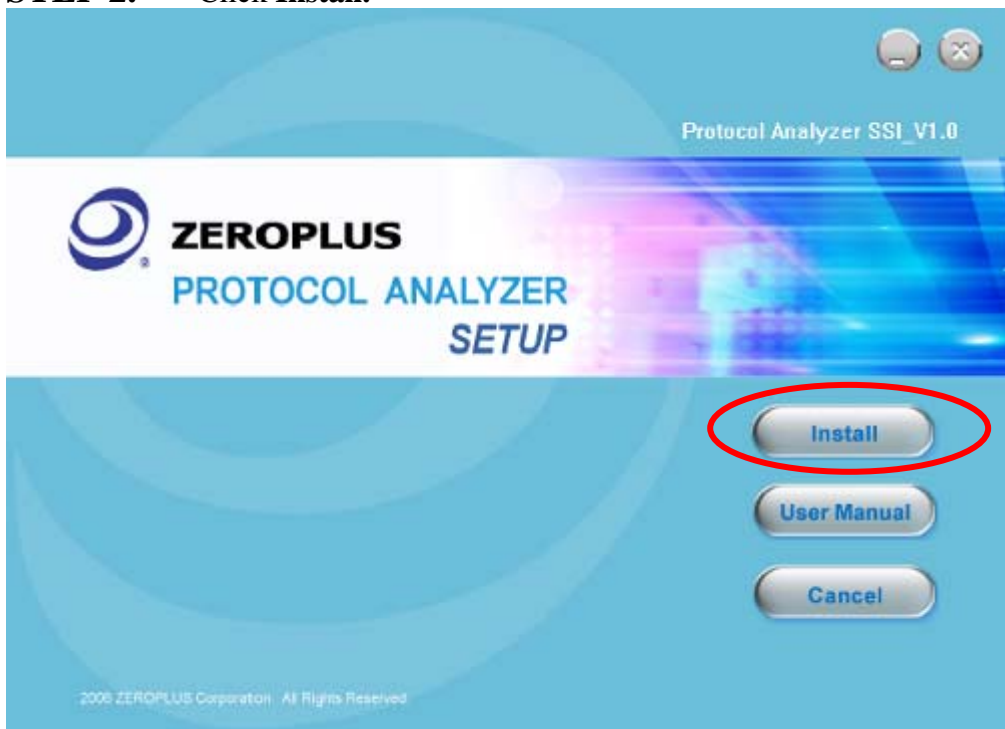
Please install the software as the following steps:

- ※ Remark: 1. The installation steps for all protocol analyzers are the same; you can complete the installation by following procedures. Following is an example on how to install protocol analyzer SSI.
- ※ Remark: 2. We won't have additional notice for you, when there is any modification of the module specification. If there is some unconformity caused by the module version upgrade, users should take the module software as the standard.

STEP 1. Install Protocol Analyzer Module.

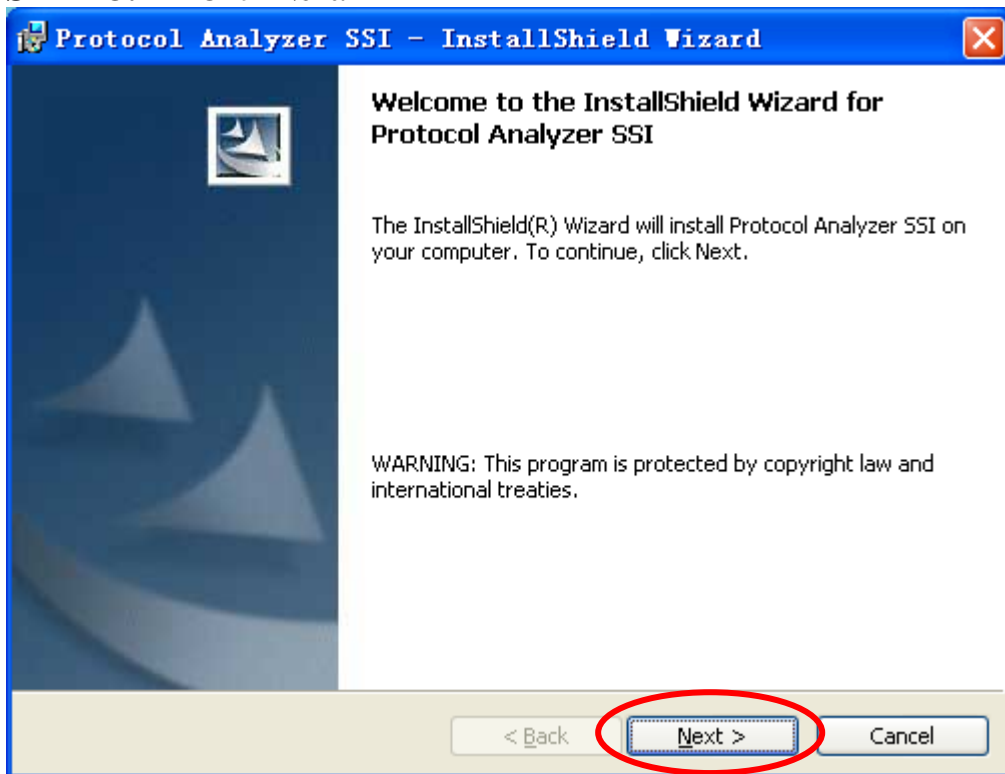


STEP 2. Click Install.

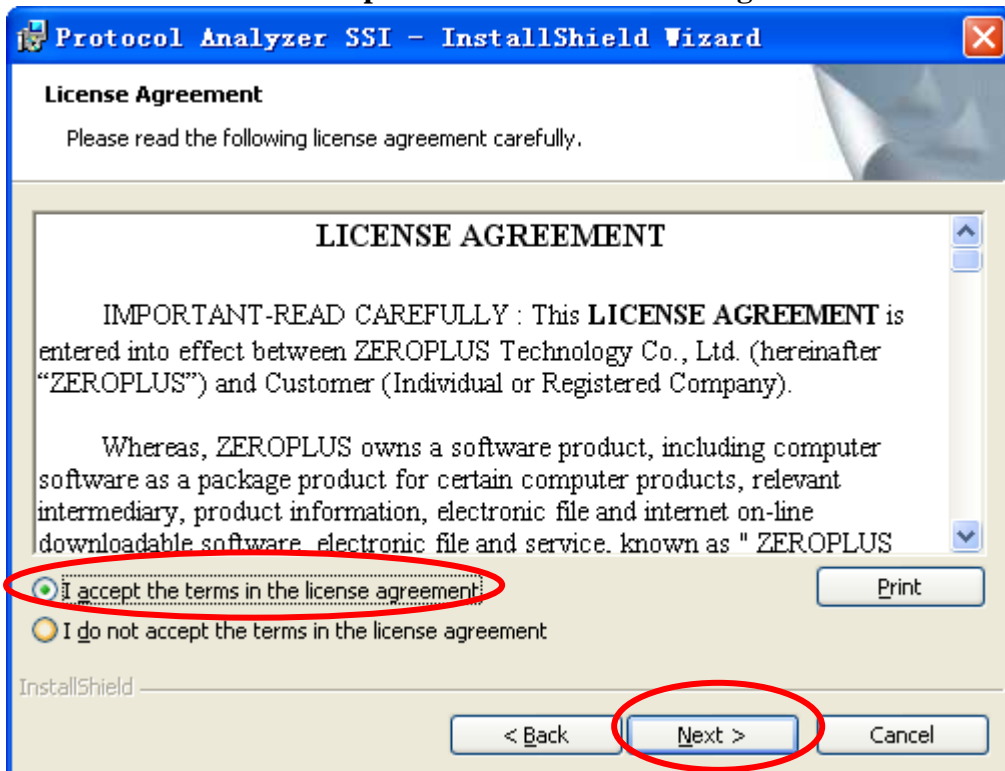




STEP 3. Click Next.

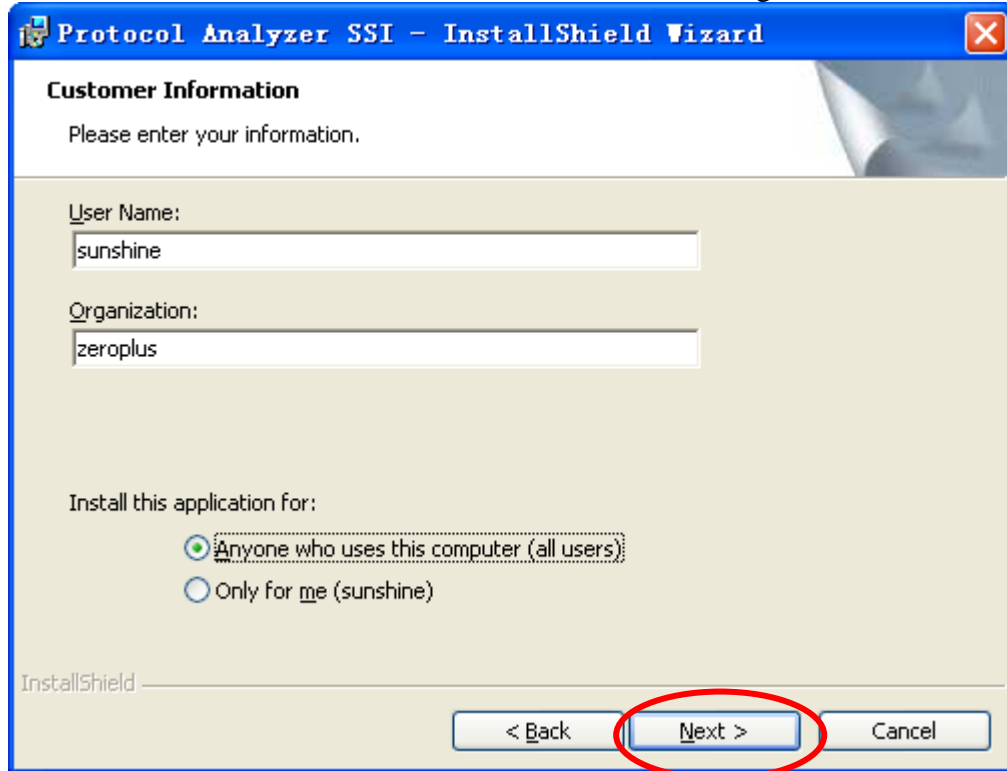


STEP 4. Select **I accept the terms in the license agreement**, and then press Next.

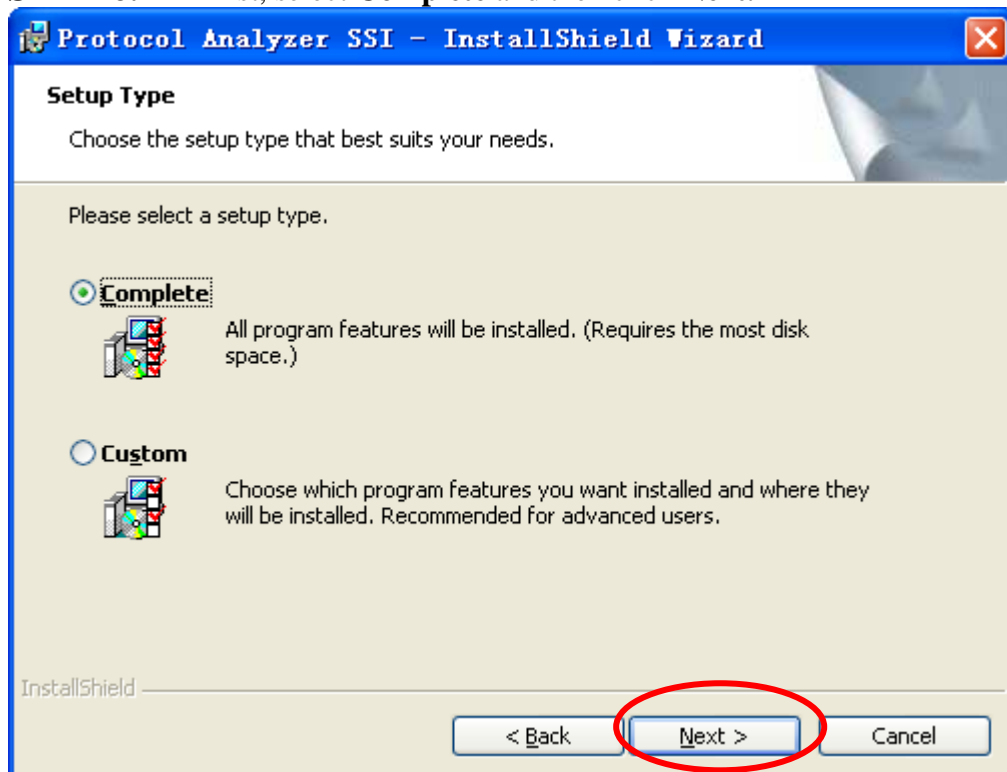




STEP 5. Fill in users' information in the below dialog box and click **Next**.

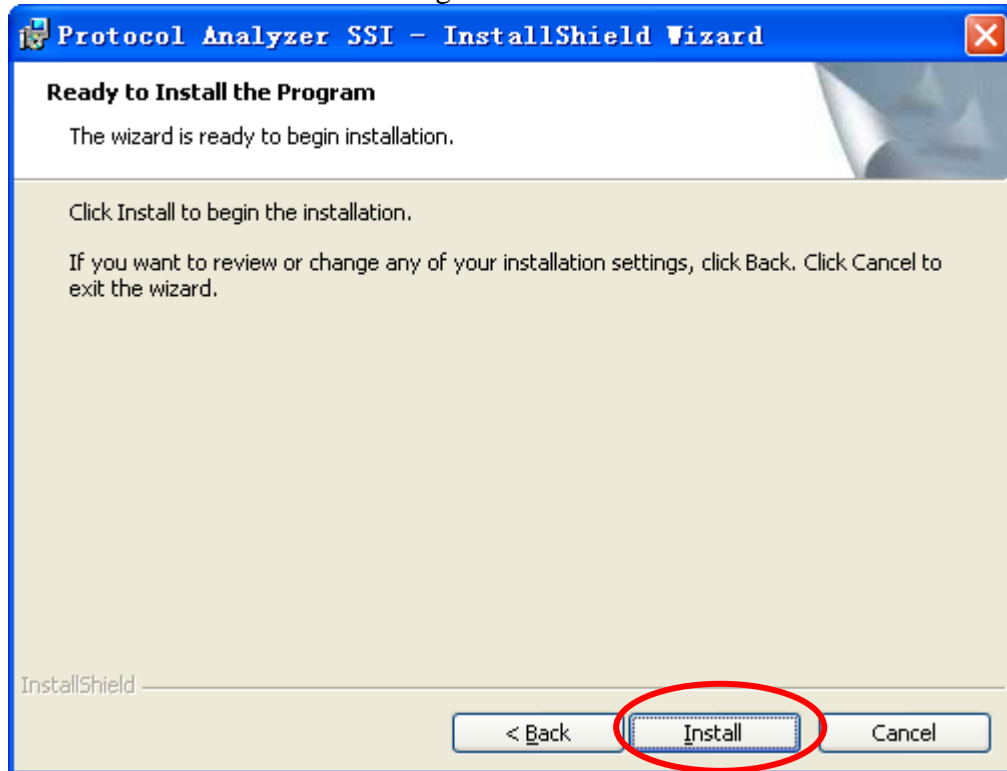


STEP 6. First, select **Complete** and then click **Next**.

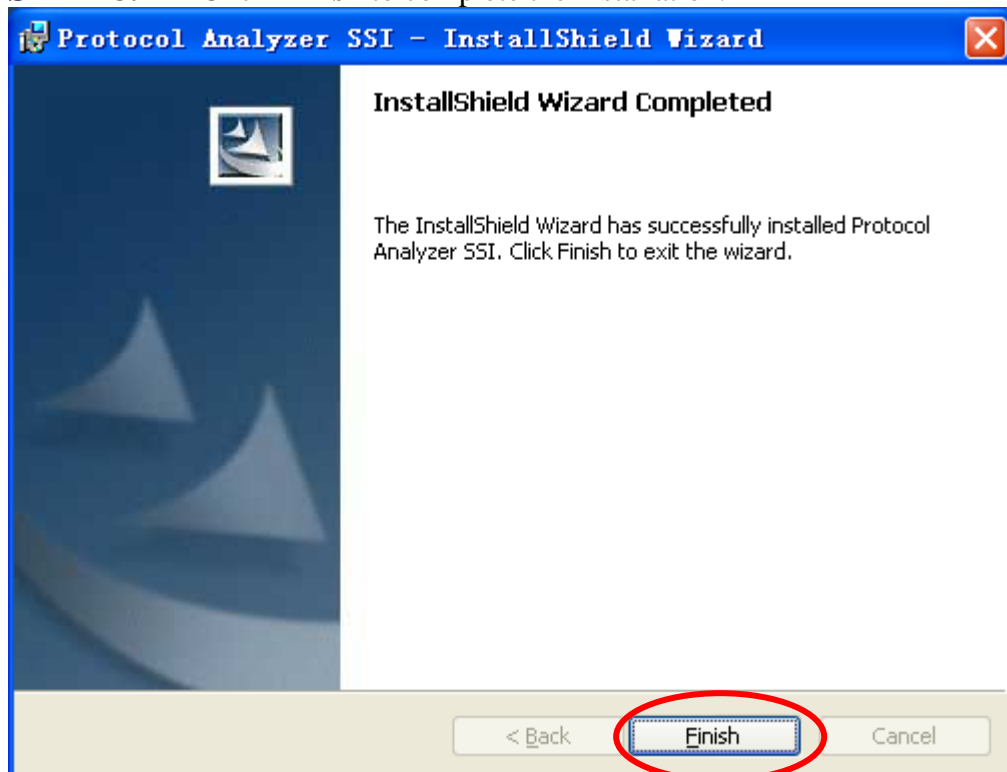




STEP 7. Click **Install** to begin the installation.



STEP 8. Click **Finish** to complete the installation.

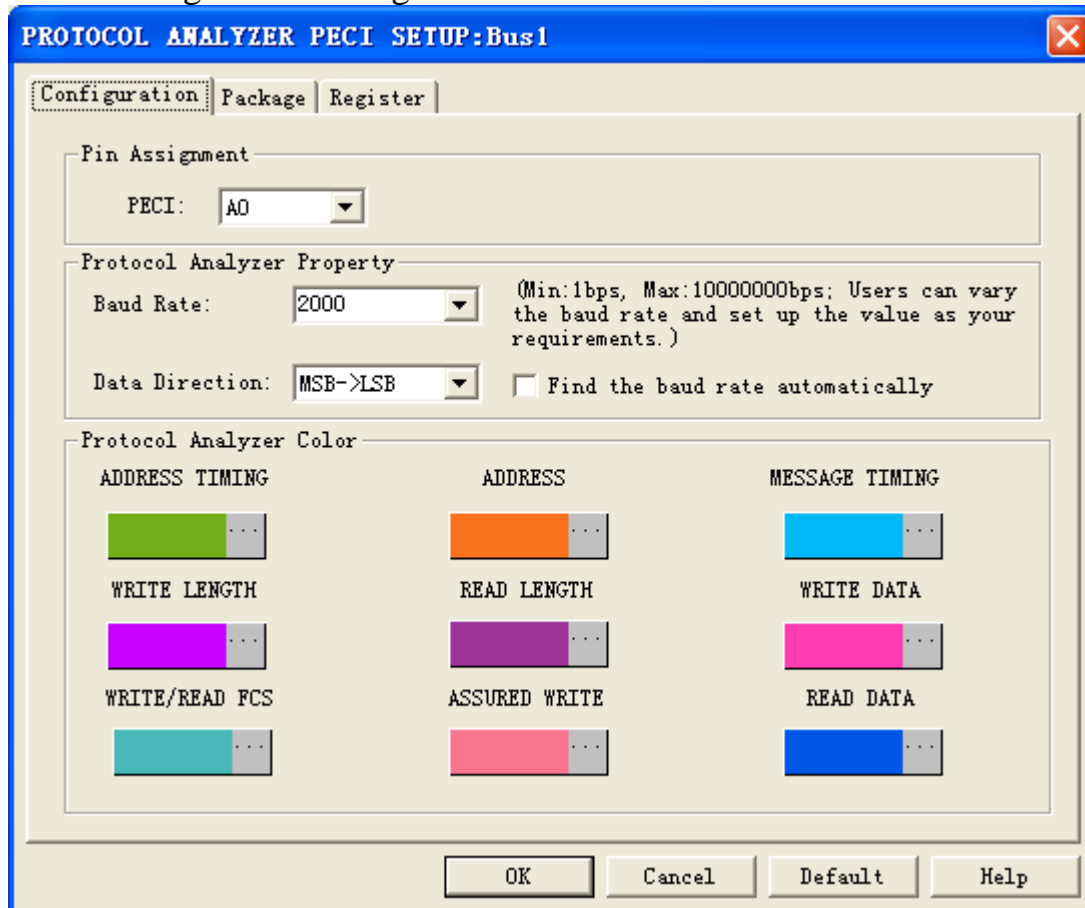




2 User Interface

Please refer to the below images to select options of setting **PECI Module**.

PECI Configuration dialog box



Pin Assignment:

Selection of Protocol Analyzer Peci channel:

1. Peci: It is used to transmit ADDRESS and DATA; the default of the channel is A0.

Protocol Analyzer Property:

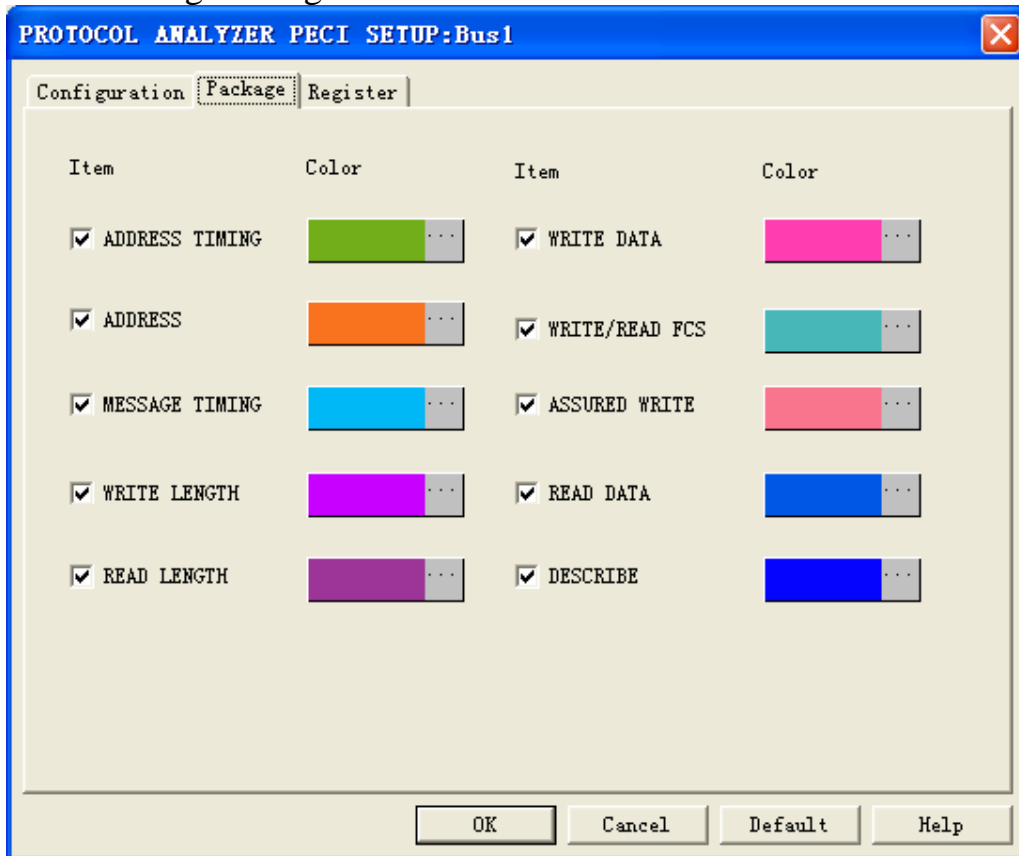
1. **Baud Rate:** Users can enter the baud rate in the range of 1bps to 10Mbps or select a value from the dropdown menu as their requirements. At the same time, when the option, **Find the baud rate automatically**, is activated, the baud rate can be found automatically.
2. **Data Direction:** Users can set the data direction as their requirements; the options are MSB->LSB and LSB->MSB.

Protocol Analyzer Color:

Users can vary the color of the protocol analyzer.

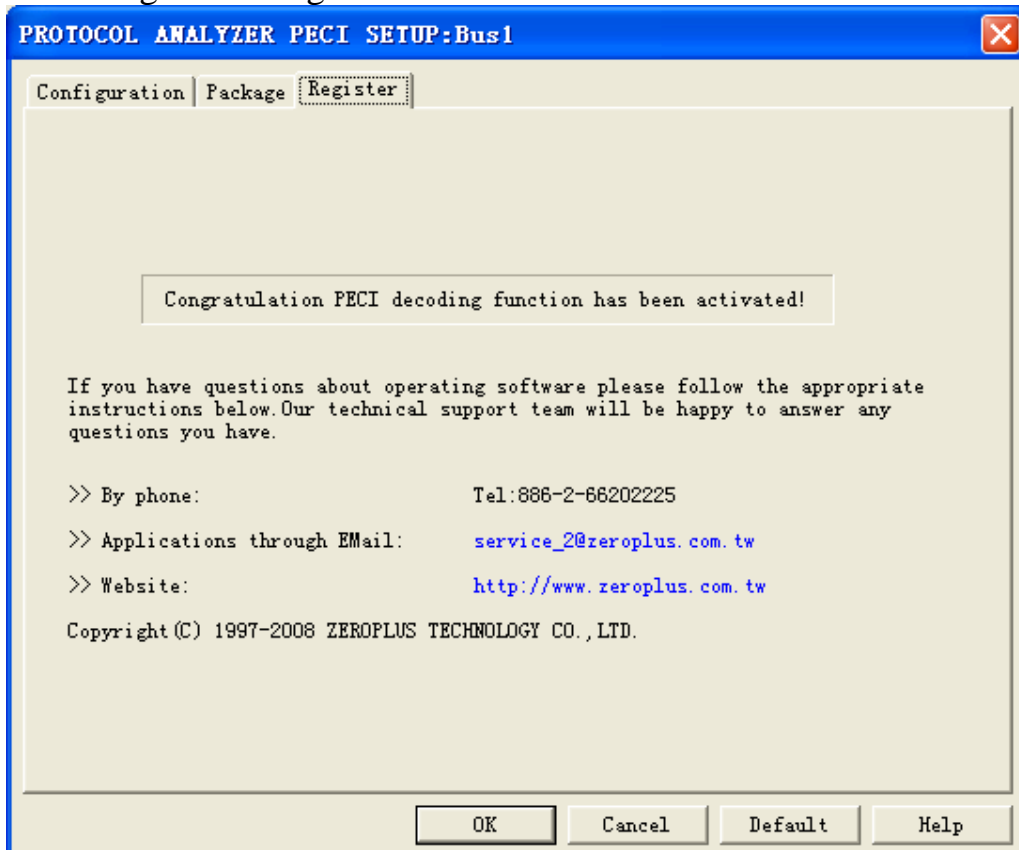


PECI Package dialog box



In the package dialog box, users can vary the displayed item and the package color.

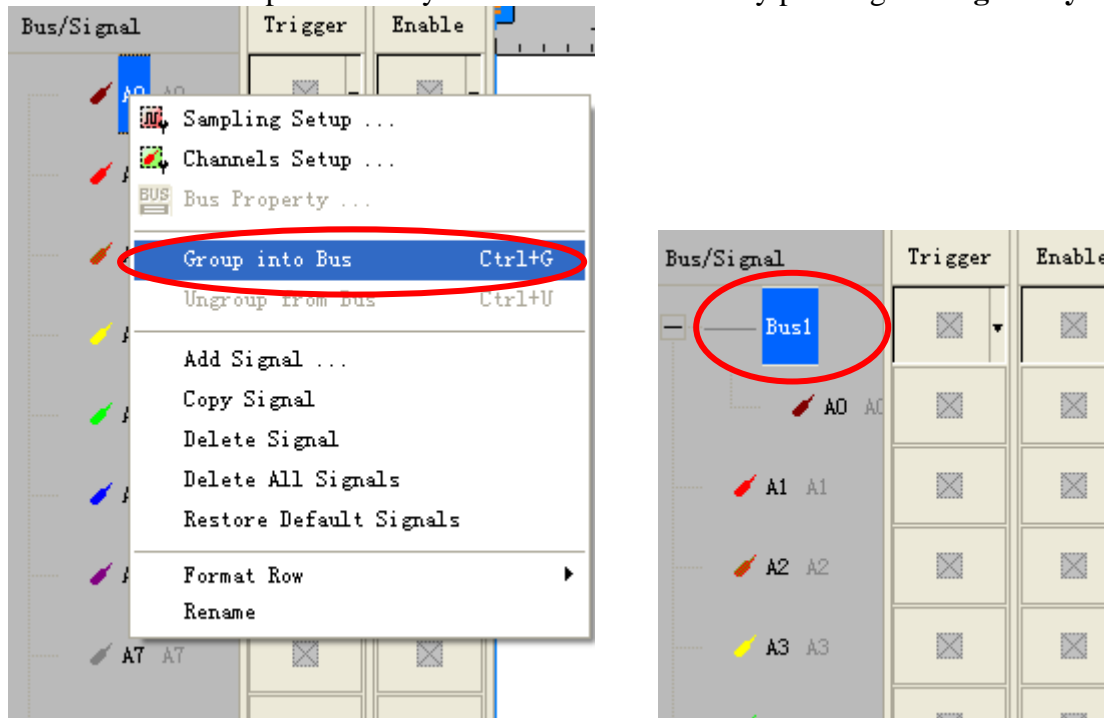
PECI Register dialog box



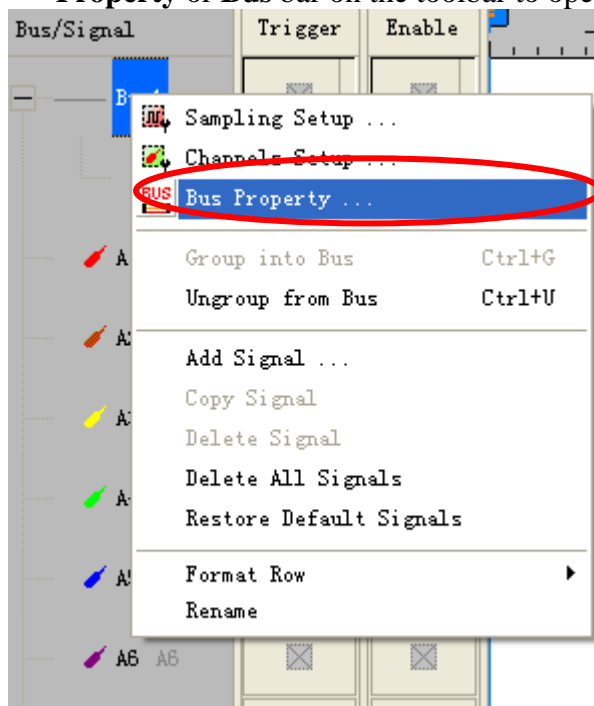
There is ZeroPlus company information. If you have questions about software operations, you can contact ZeroPlus by Telephone or Email.

3 Operating Instructions

STEP 1. Group the unanalyzed channel into **Bus 1** by pressing the **Right Key** on the mouse.

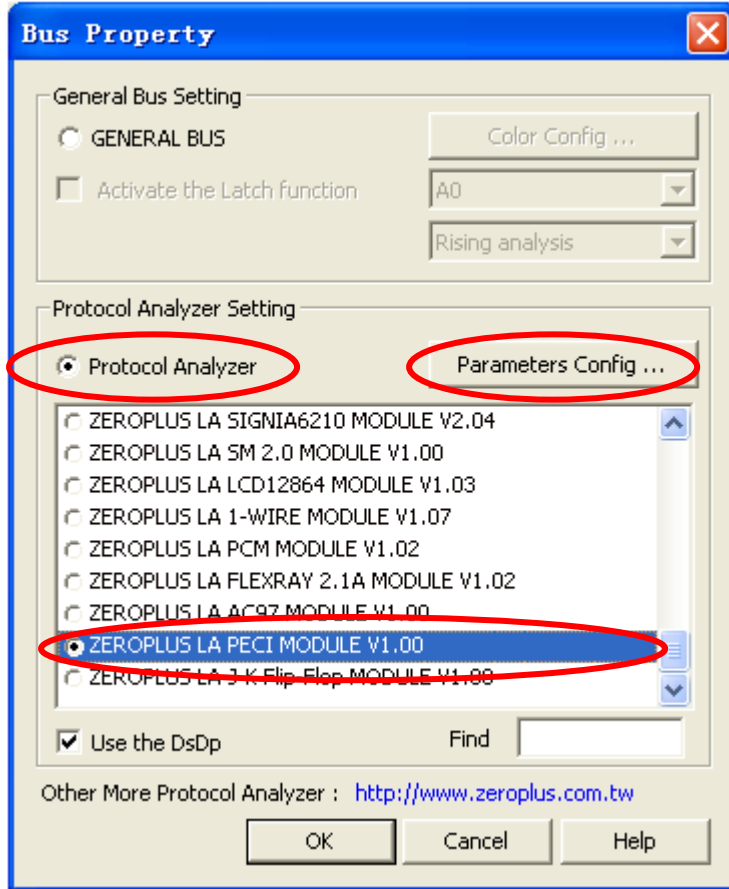


STEP 2. Select **Bus1**, then press **Right key** on the mouse to list menu, then press **Bus Property** or **Bus bar** on the toolbar to open **Bus Property** dialog box.

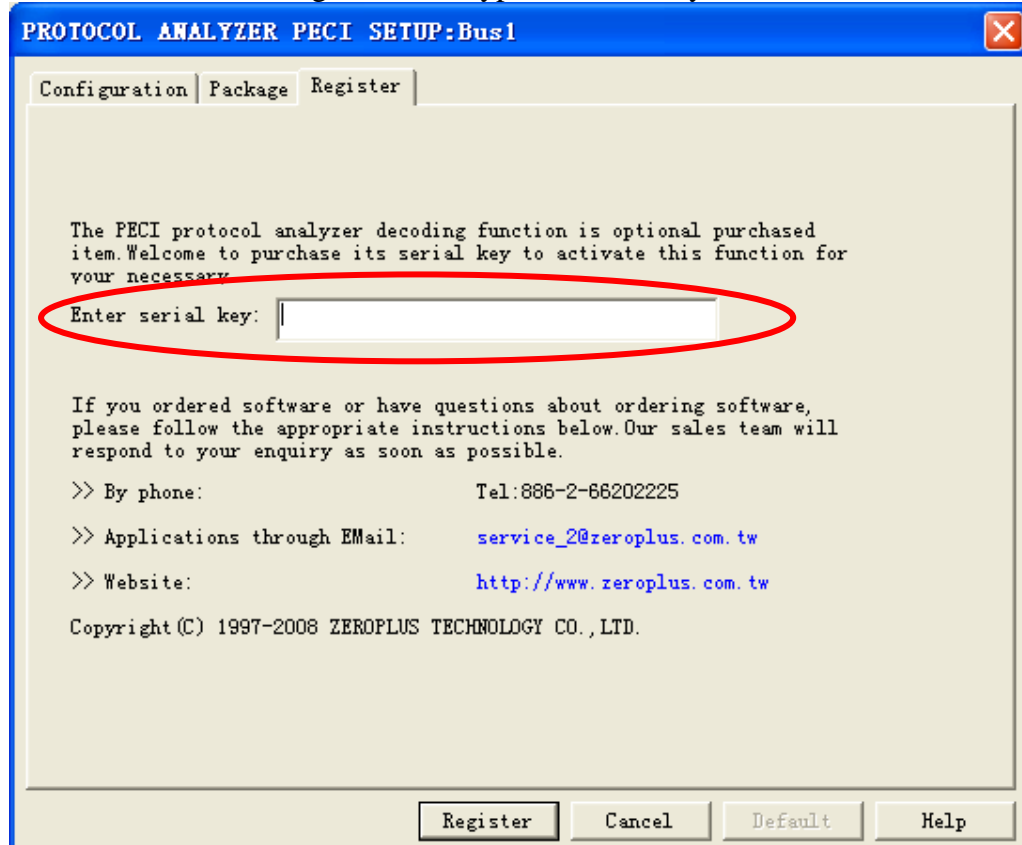




STEP 3. For Protocol Analyzer PECE Parameters Configuration, select Protocol Analyzer, and then choose **ZEROPLUS LA PECE MODULE V1.00**, next click **Parameters Configuration** to open **Parameters Configuration** dialog box.

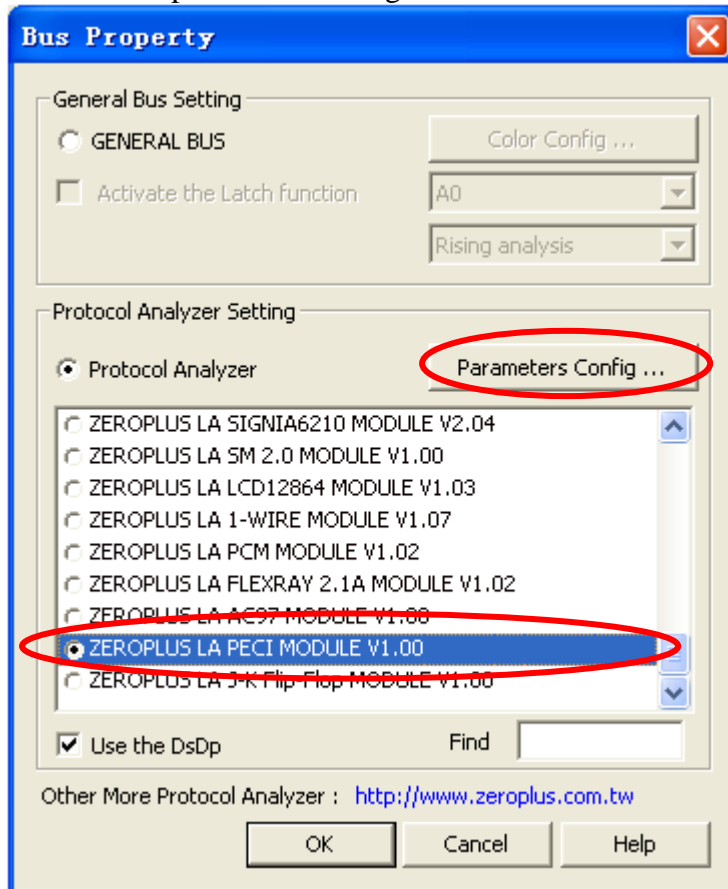


STEP 4. Press Register tab to type the serial key number of PECE. Then, press **Register**.

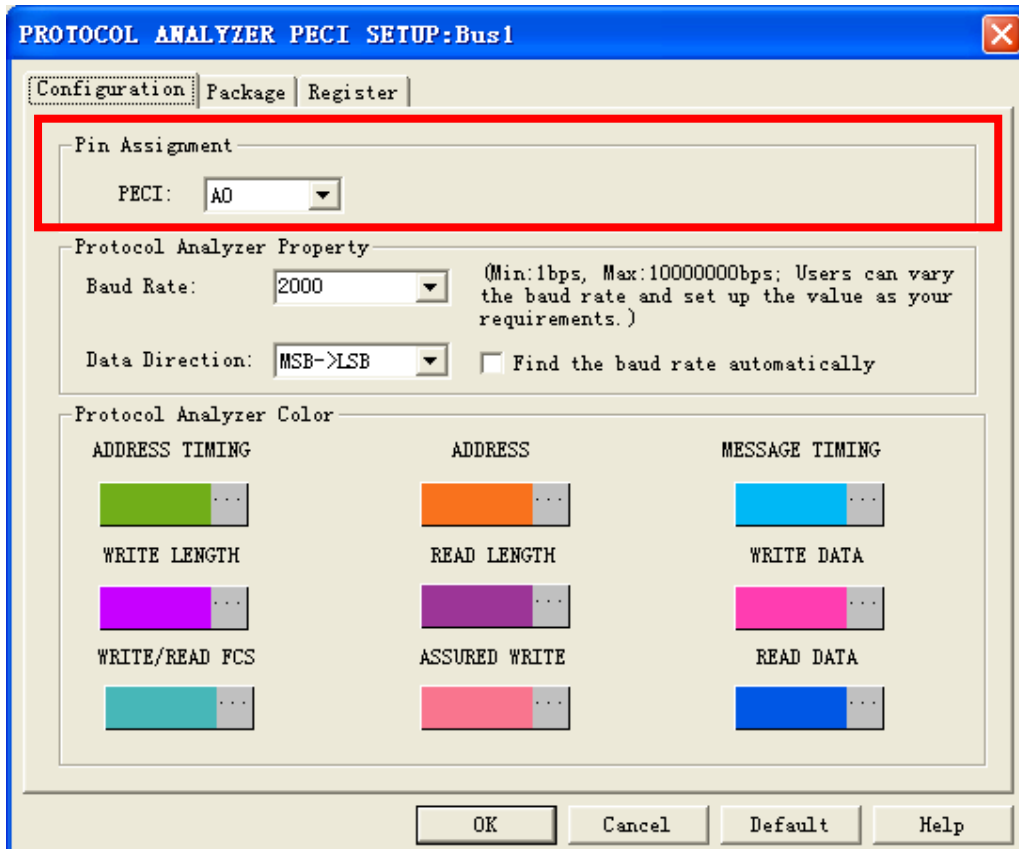




STEP 5. After completing **Register**, come back to the **Bus Property** dialog box, and then click the parameters configuration to start the Protocol Analyzer PECCI setup.

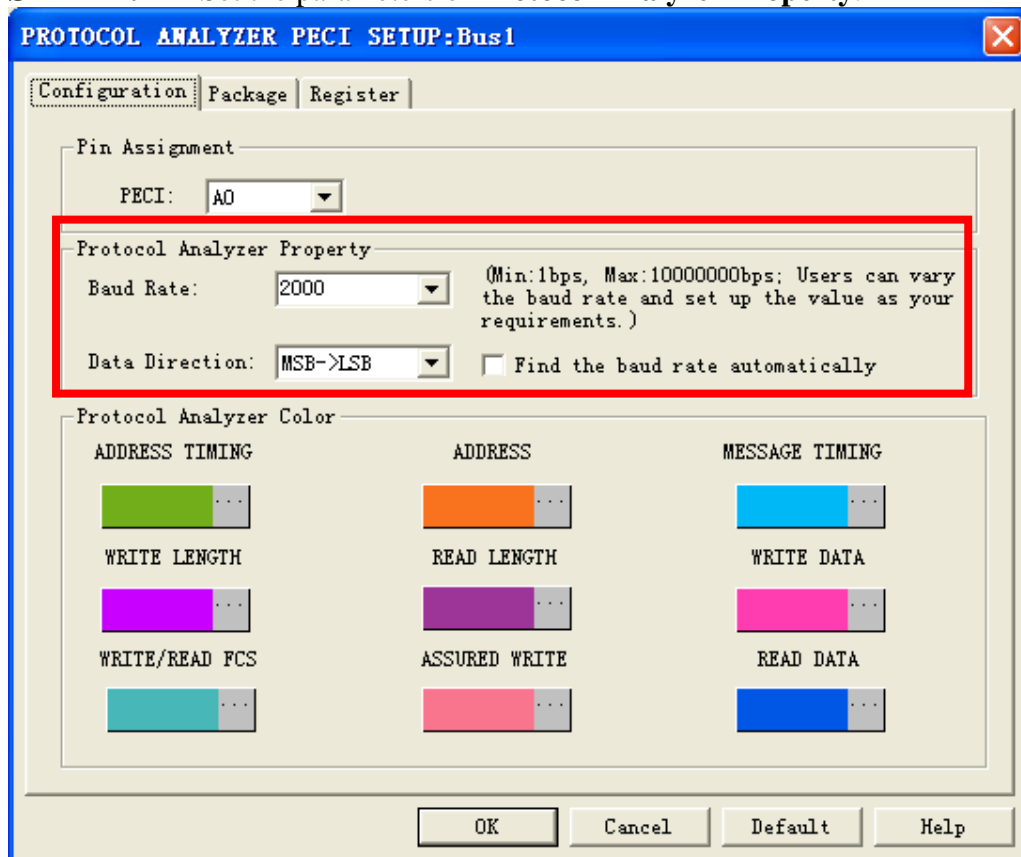


STEP 6. Select the channel of PECCI.

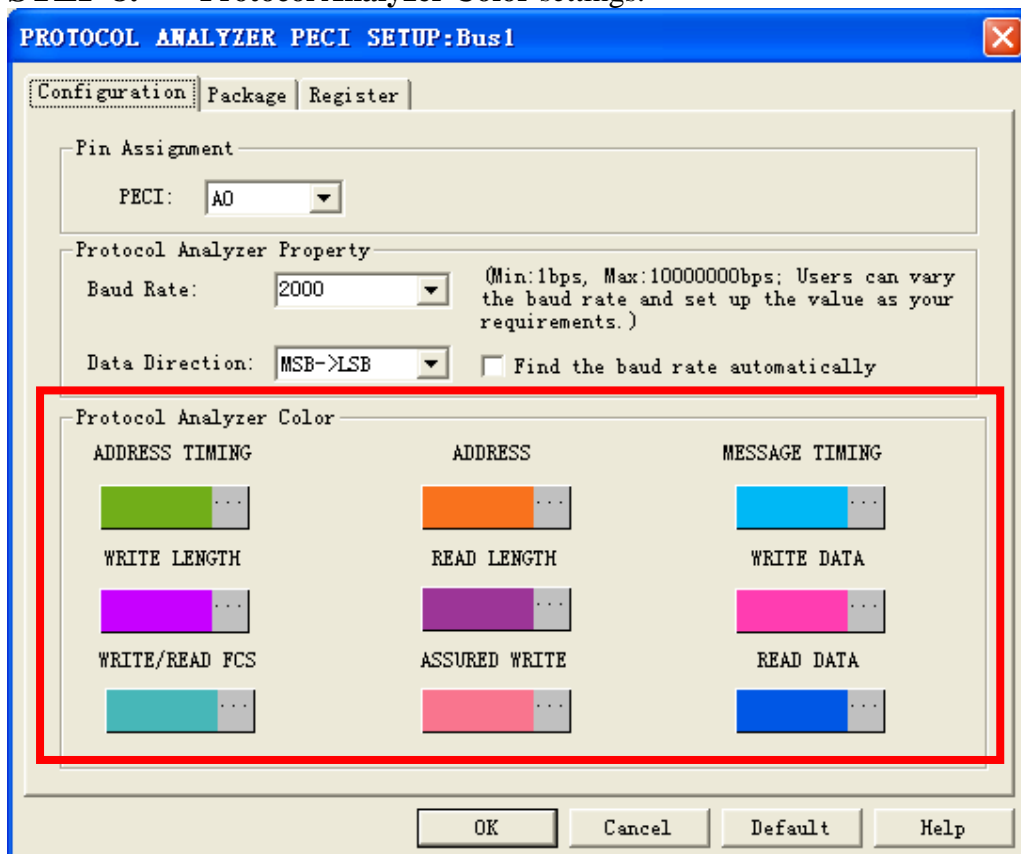




STEP 7. Set the parameters of Protocol Analyzer Property.

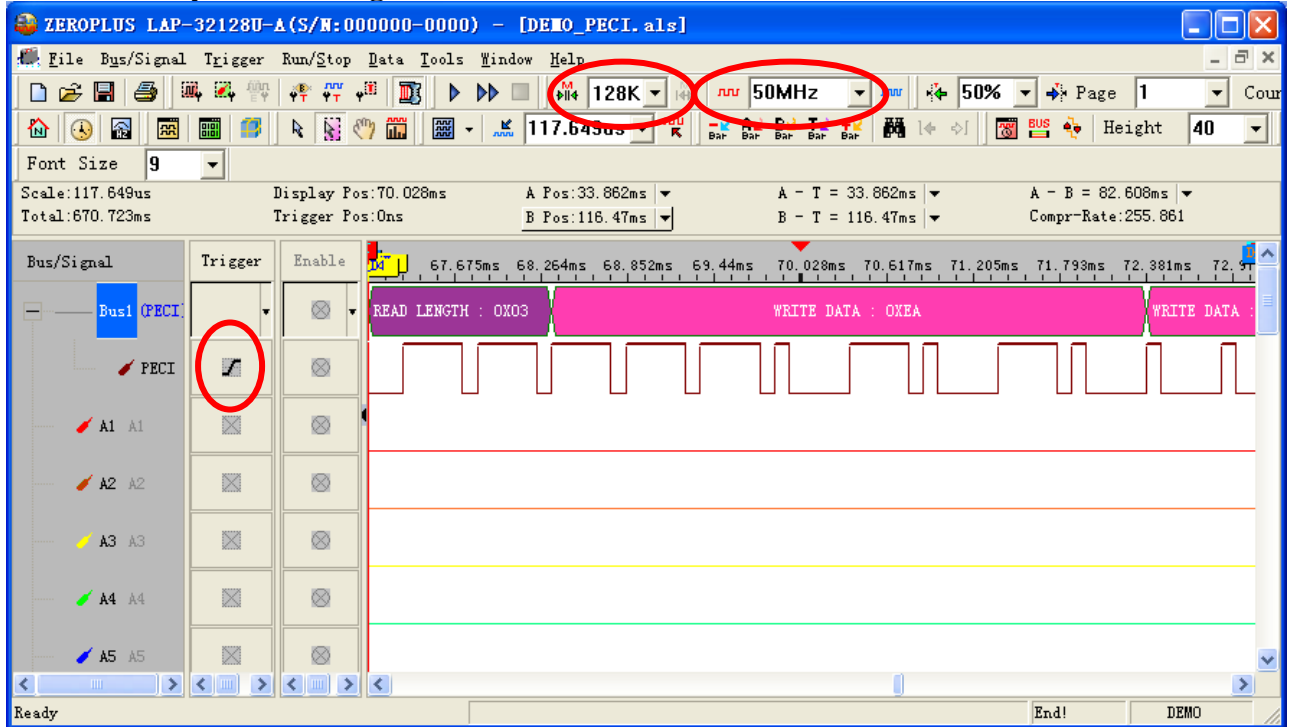


STEP 8. Protocol Analyzer Color settings.



STEP 9. Following pictures show the completion of the protocol analyzer decoding and the package list. The Trigger condition is set as Rising Edge; the Memory depth is 128K; the Sampling frequency is 50MHz.

Protocol Analyzer Decoding



Package List

