



**孕龍科技股份有限公司**  
**Zeroplus Technology Co., Ltd.**

# SPECIFICATION

**MODEL: B09023-LAP-PROFI BUS-M**

**PART NO:** \_\_\_\_\_

**VERSION:** **V1.00**

Approver		Check	Design
GM	PM		

Customer Confirm

\* Please fax the file to  
ZeroPlus Technology after  
signing .

2F, NO.123, Jian Ba Rd,  
Chung Ho City, Taipei Hsian, R.O.C.

Tel:+886-2-66202225  
Fax:+886-2-22234362



# Content

<b>1</b>	<b>Software Installation</b> .....	<b>3</b>
<b>2</b>	<b>User Interface</b> .....	<b>7</b>
<b>3</b>	<b>Operating Instructions</b> .....	<b>10</b>

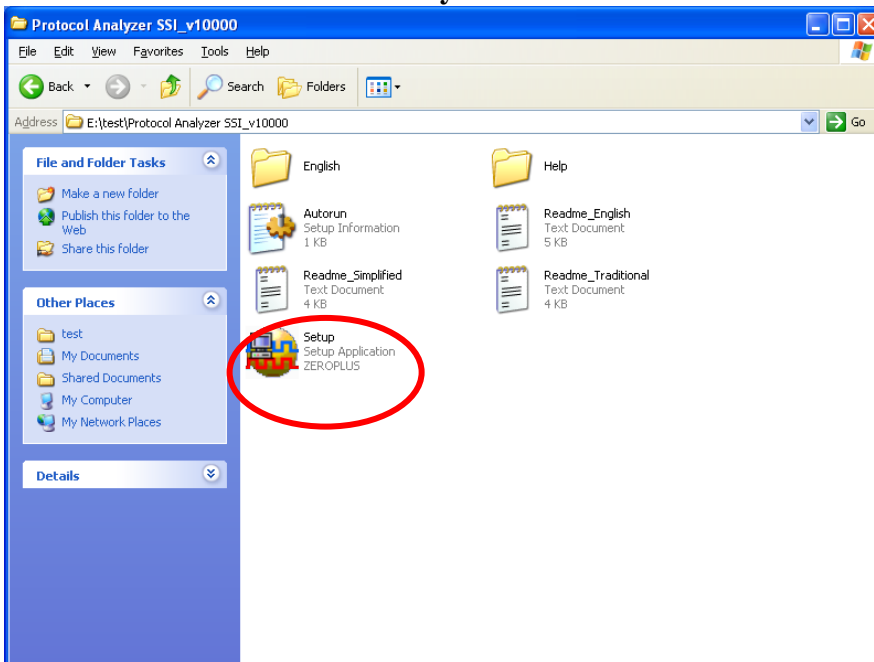


## 1 Software Installation

Please install the software as the following steps:

- ※ Remark: 1. The installation steps for all protocol analyzers are the same; you can complete the installation by following procedures. Following is an example on how to install protocol analyzer SSI.
- ※ Remark: 2. We won't have additional notice for you, when there is any modification of the module specification. If there is some unconformity caused by the module version upgrade, users should take the module software as the standard.

### STEP 1. Install Protocol Analyzer Module.

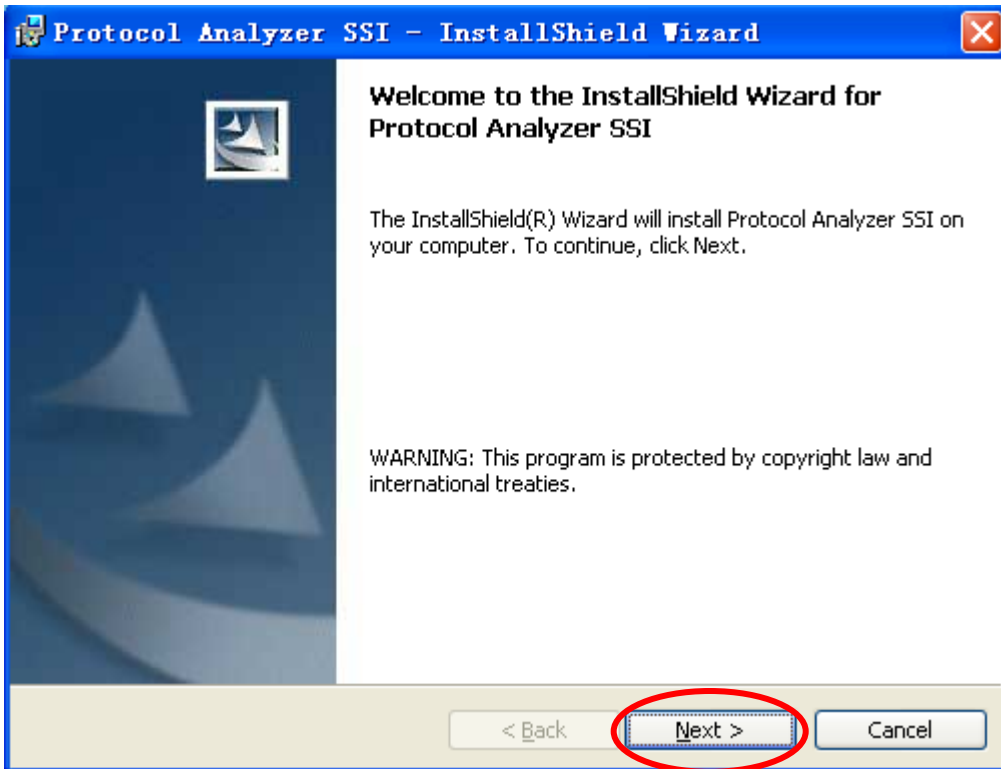


### STEP 2. Click Install.

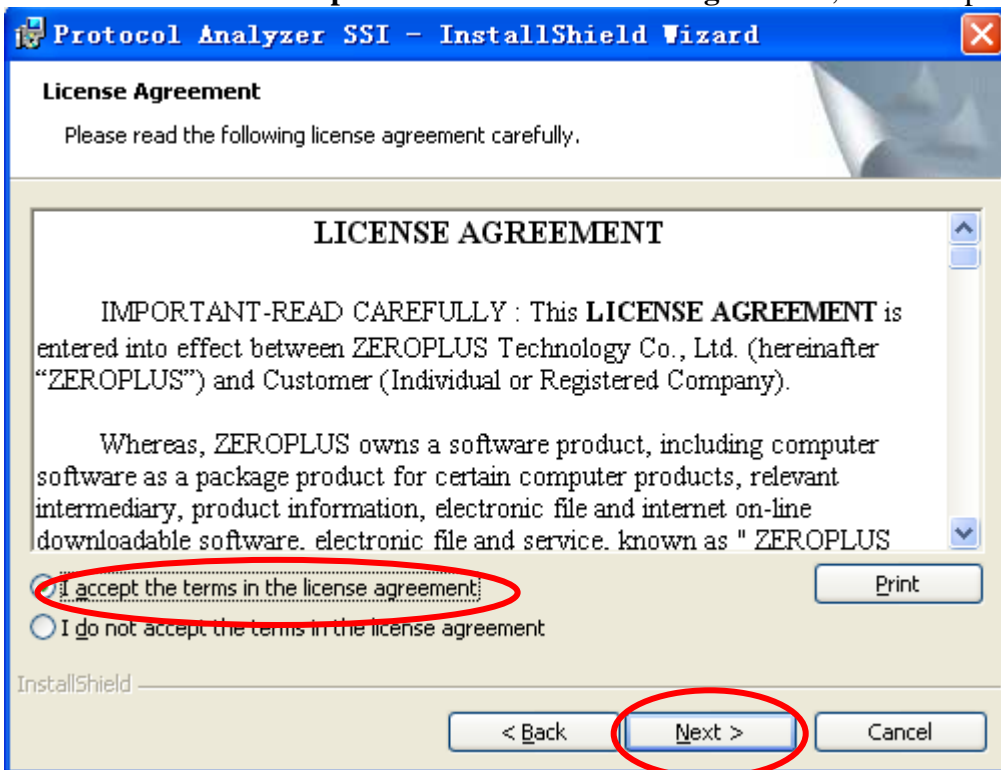




**STEP 3.** Click Next.

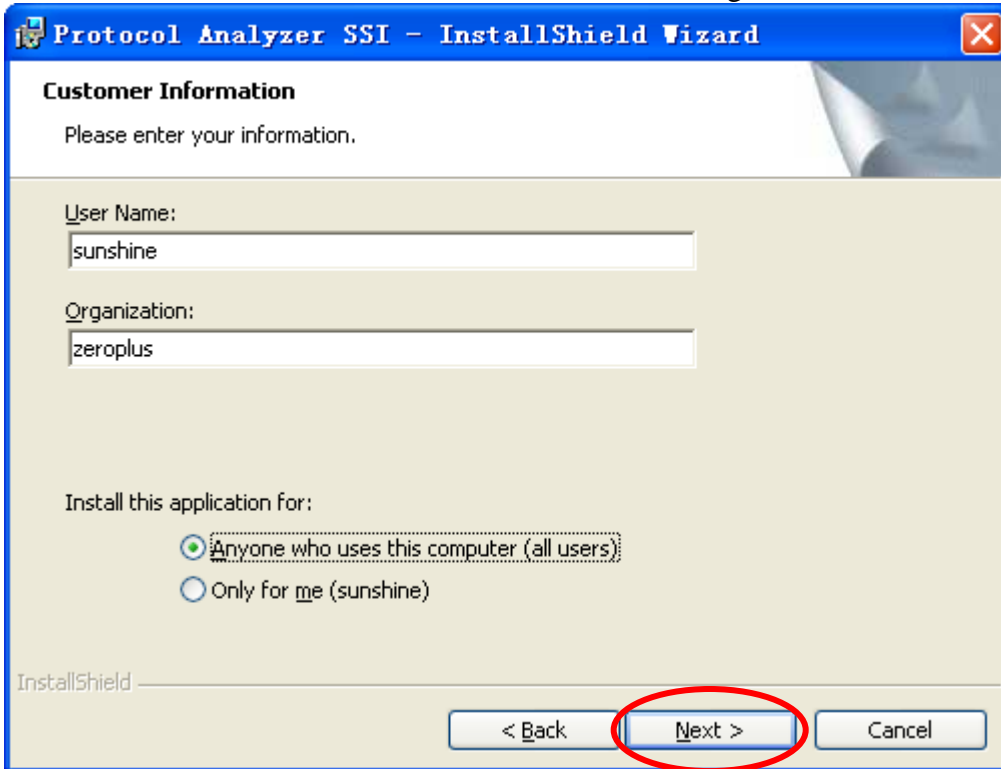


**STEP 4.** Select I accept the terms in the license agreement, and then press Next.

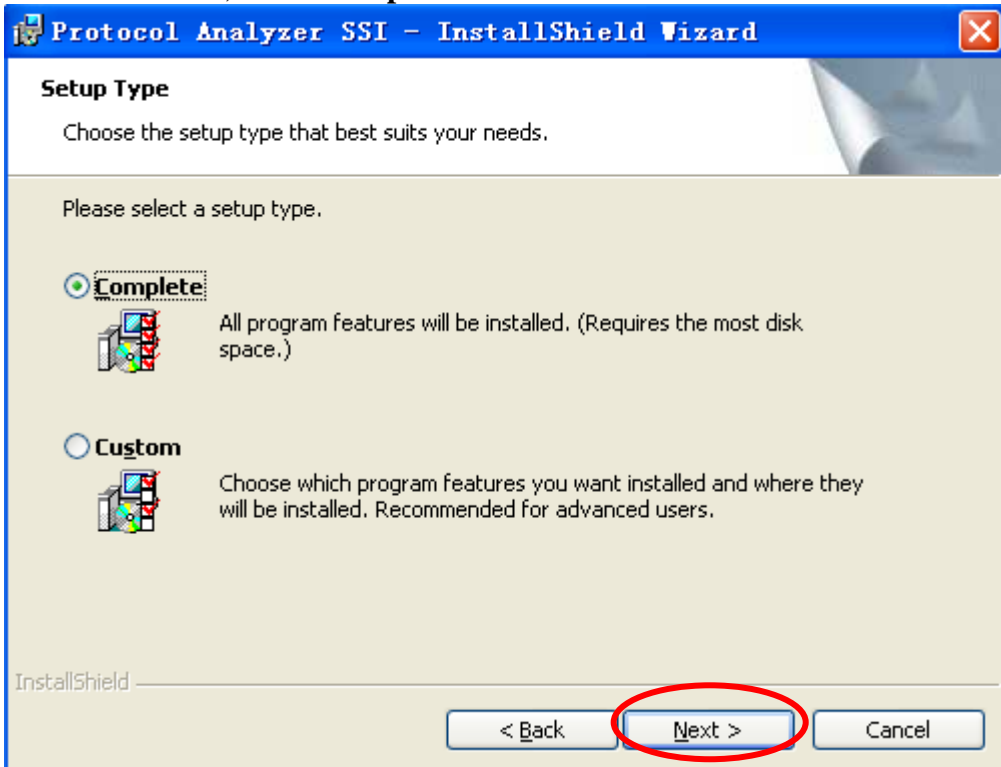




**STEP 5.** Fill in users' information in the below dialog box and click **Next**.

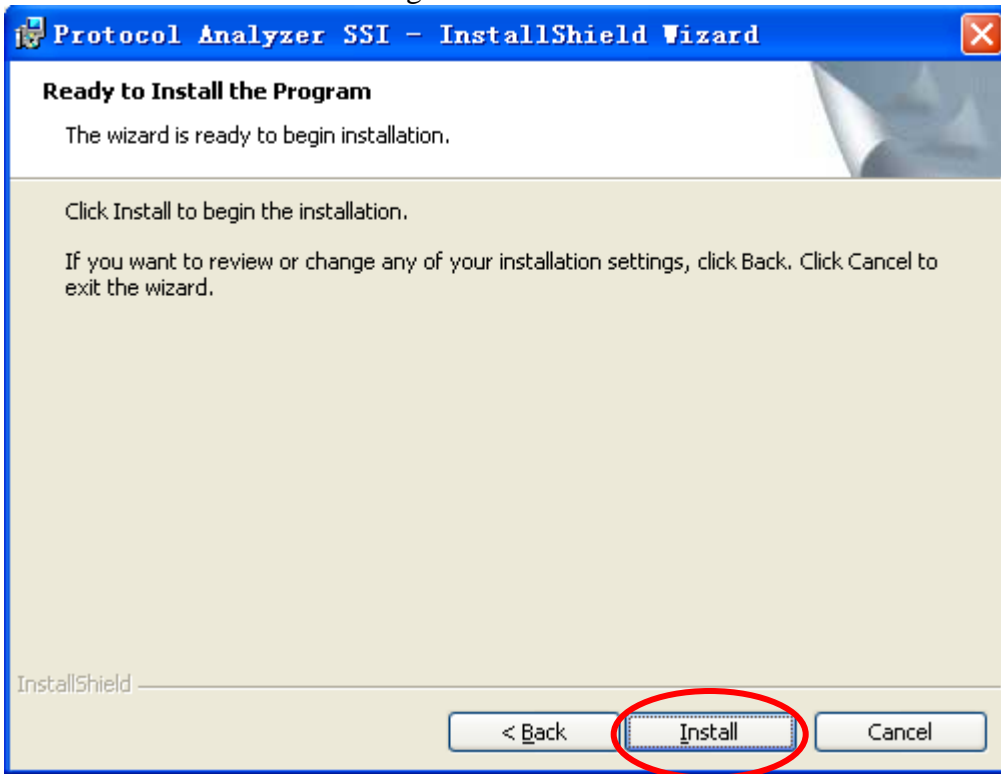


**STEP 6.** First, select **Complete** and then click **Next**.

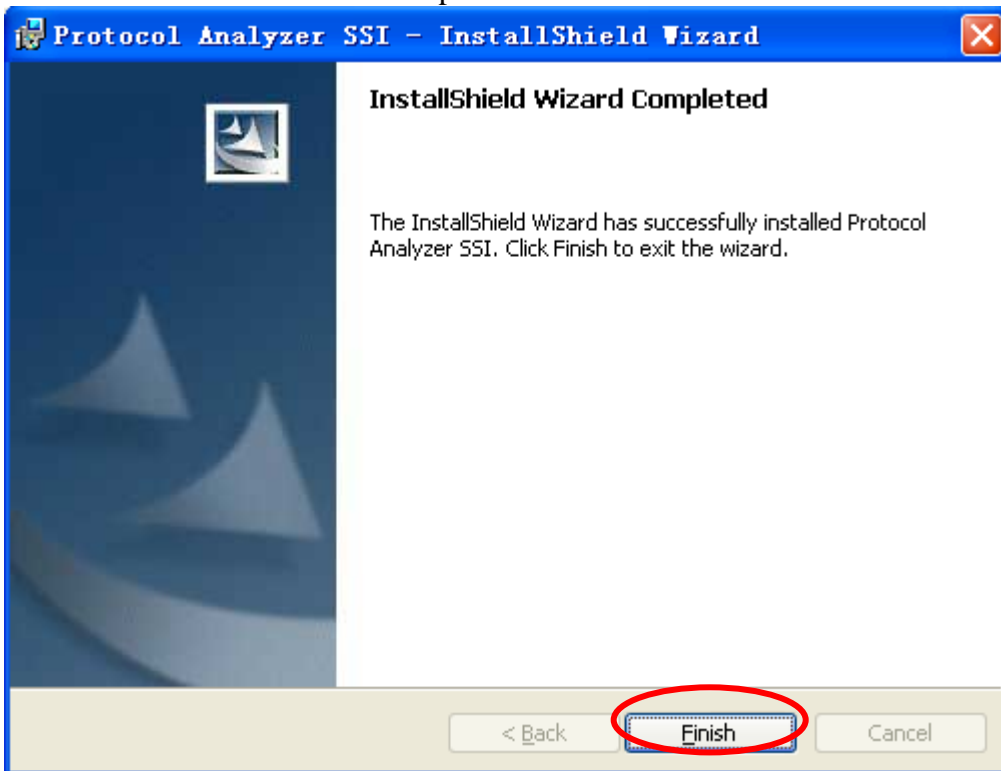




**STEP 7.** Click **Install** to begin the installation.



**STEP 8.** Click **Finish** to complete the installation.

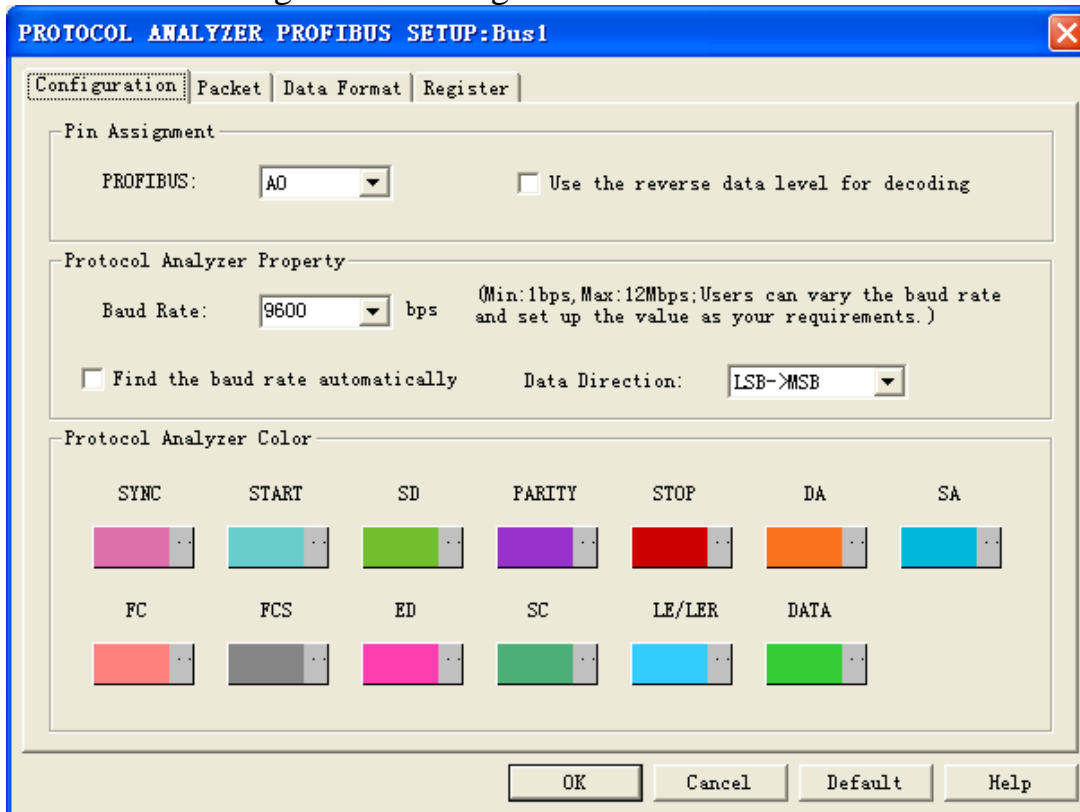




## 2 User Interface

In the configuration, please refer to the below images to select options of setting PROFIBUS module.

### PROFIBUS Configuration Dialog Box



**Pin Assignment:** It only needs one channel to decode the PROFIBUS data, and the decoding mode is on the basis of UART.

**Use the reverse data level for decoding:** When selecting this option, it can do the reverse decoding for the data line.

**Baud Rate:** Users can fill or select the value of the Baud Rate; the selectable values are 110, 300, 600, 1200, 2400, 4800, 9600, 19200, 38400, 57600, 115200, 230400, 460800 and 921600. Users can also input the value between 1 and 12000000. The default is 9600.

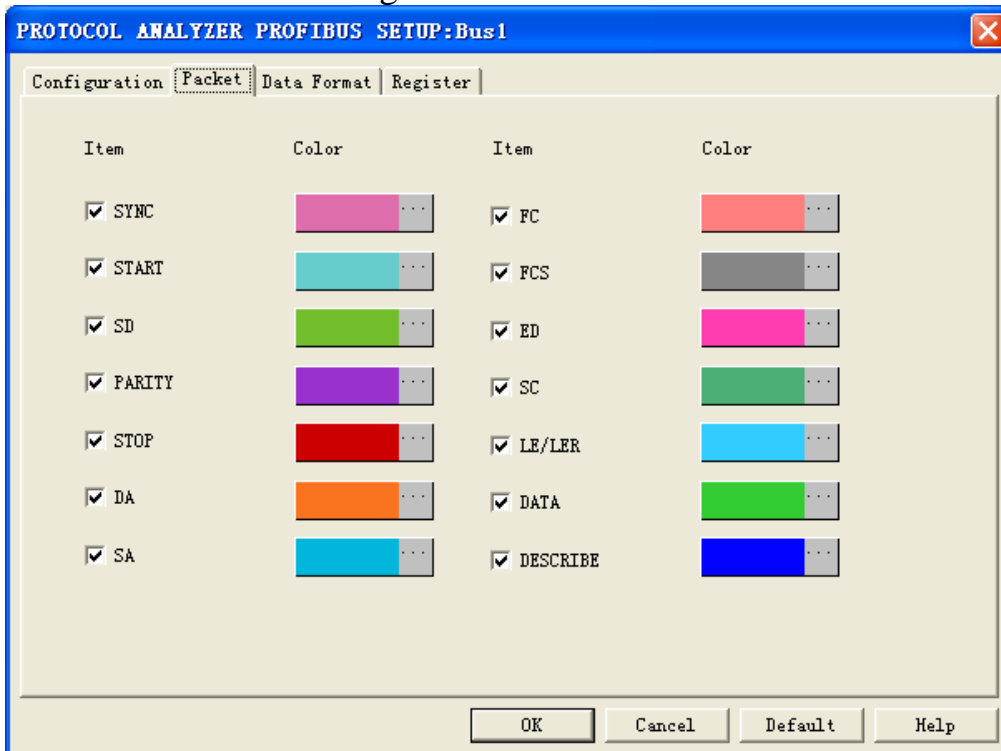
**Find the baud rate automatically:** When selecting this option, **Find the baud rate automatically**, it can calculate the baud rate automatically, and it will display the calculated value of the baud rate.

**Data Direction:** On the basis of the Data Direction of UART, users can select LSB->MSB or MSB->LSB from the pull-down menu; the default is LSB->MSB.

**Protocol Analyzer Color:** Users can set the color for each data segment in this part.

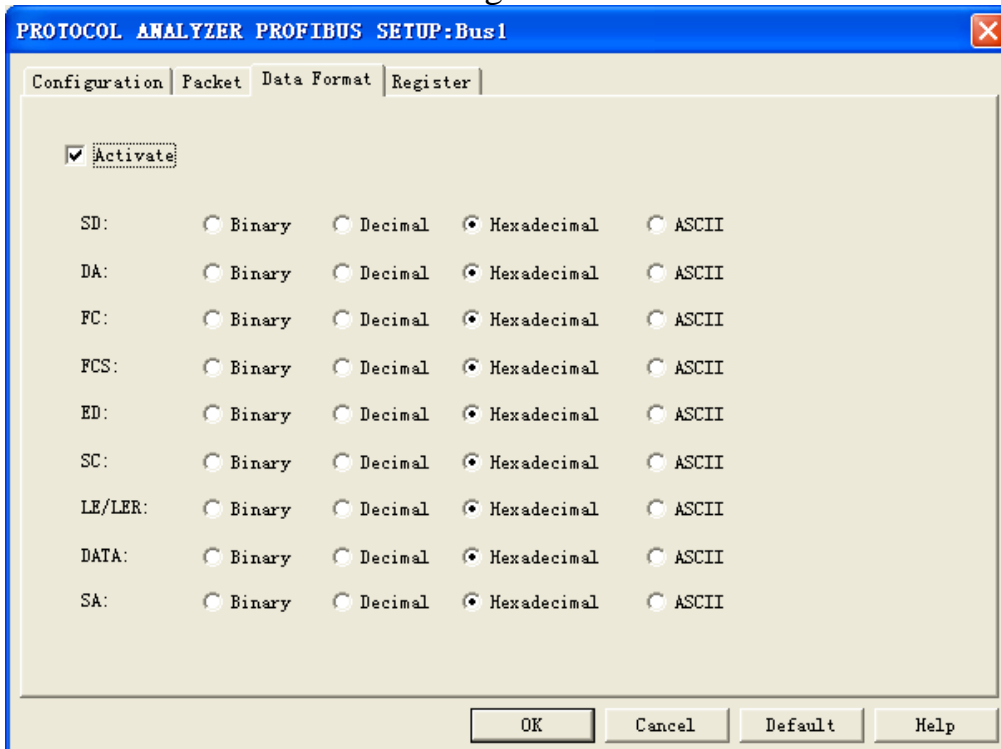


## PROFIBUS Packet Dialog Box



In the packet part, users can set the items and colors as users' requirements.

## PROFIBUS Data Format Dialog Box

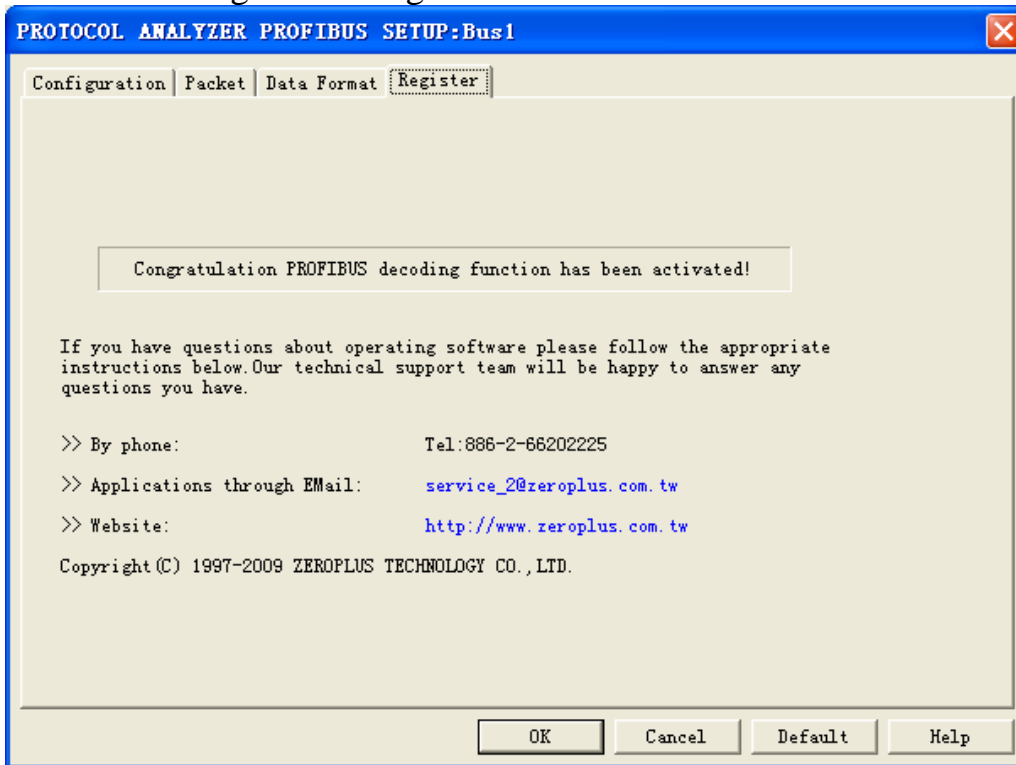


Users can set the Data Format of the SD, DA, PC, FCS, ED, SC, LE/LER, DATA and SA as their requirements. When selecting the option, Activate, the data formats are decided by the settings in the Protocol Analyzer; when not selecting the option, Activate, the data formats are decided by the settings in the main program.





## PROFIBUS Register Dialog Box

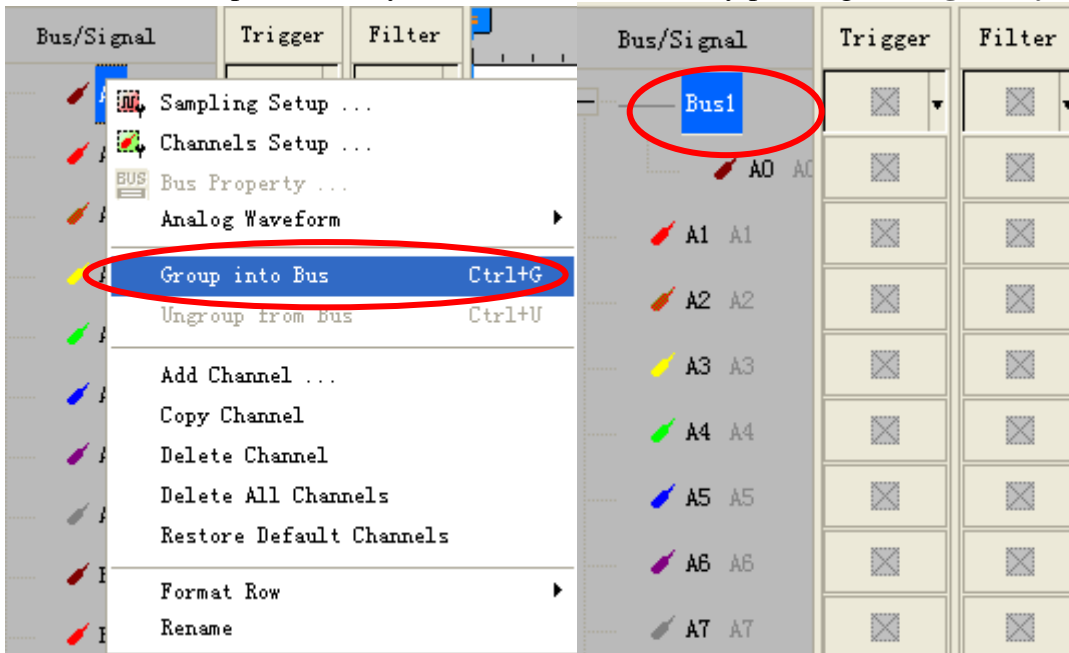


There is written ZeroPlus company information. If you have any questions about software operations, you can contact ZeroPlus by Telephone or Email.

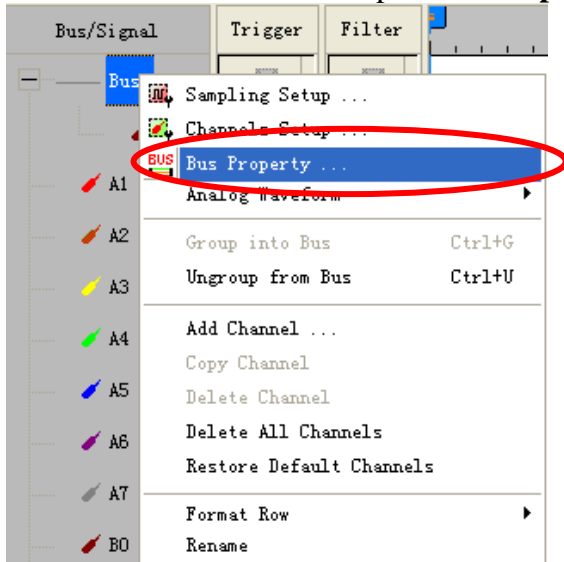


### 3 Operating Instructions

**STEP 1.** Group the unanalyzed channels into **Bus1** by pressing the **Right Key** on the mouse.

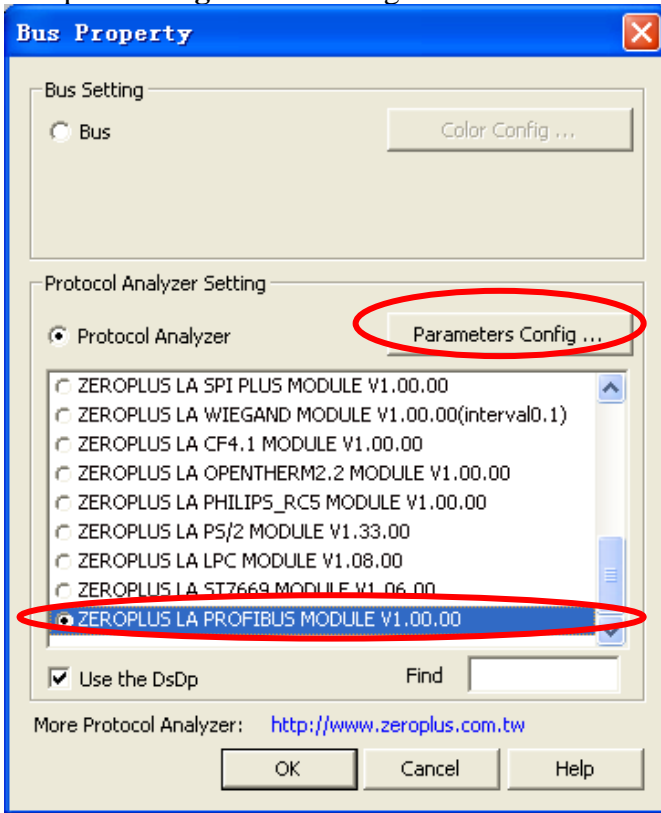


**STEP 2.** Select **Bus1**, and press **Right Key** on the mouse to list the menu, then press **Bus Property** or **Bus bar** on the toolbar to open **Bus Property** dialog box.

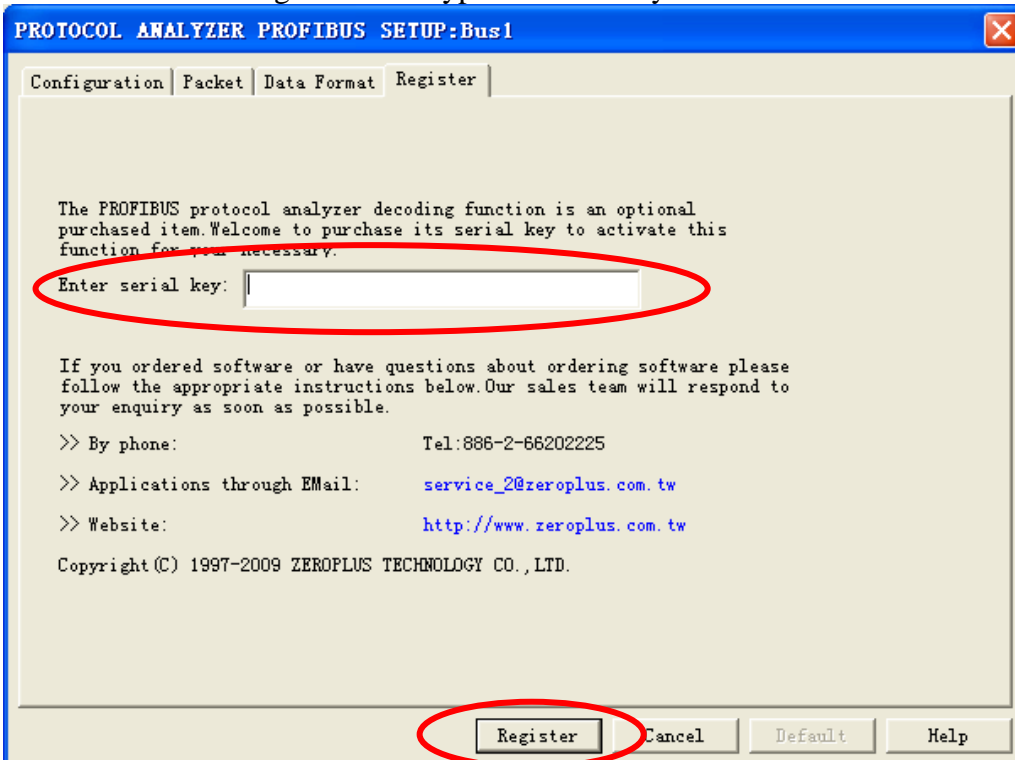




**STEP 3.** For Protocol Analyzer PROFIBUS Parameters Configuration, select Protocol Analyzer, and then choose **ZEROPLUS LA PROFIBUS MODULE V1.00.00**. Next click **Parameters Configuration** to open **Configuration** dialog box.

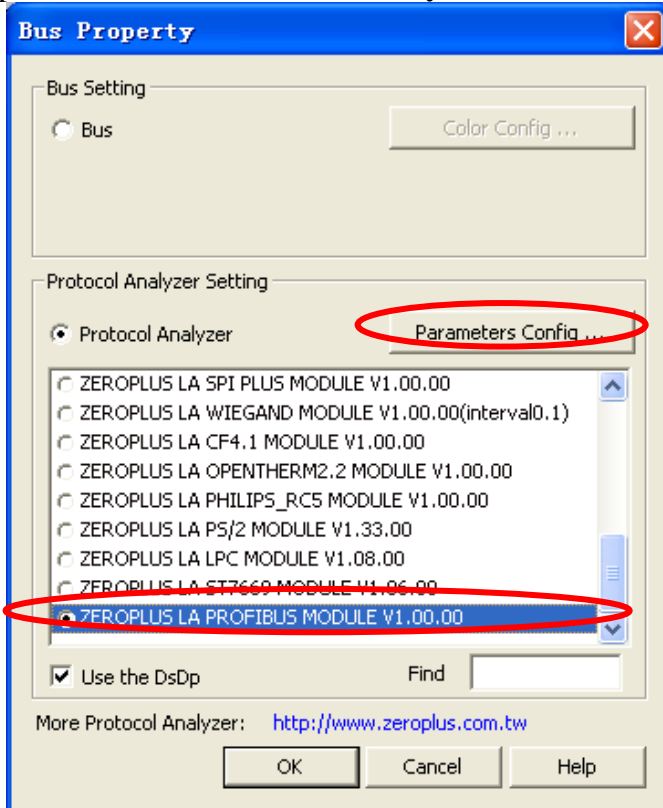


**STEP 4.** Press Register tab to type the serial key number of **PROFIBUS**. Then, press **Register**.

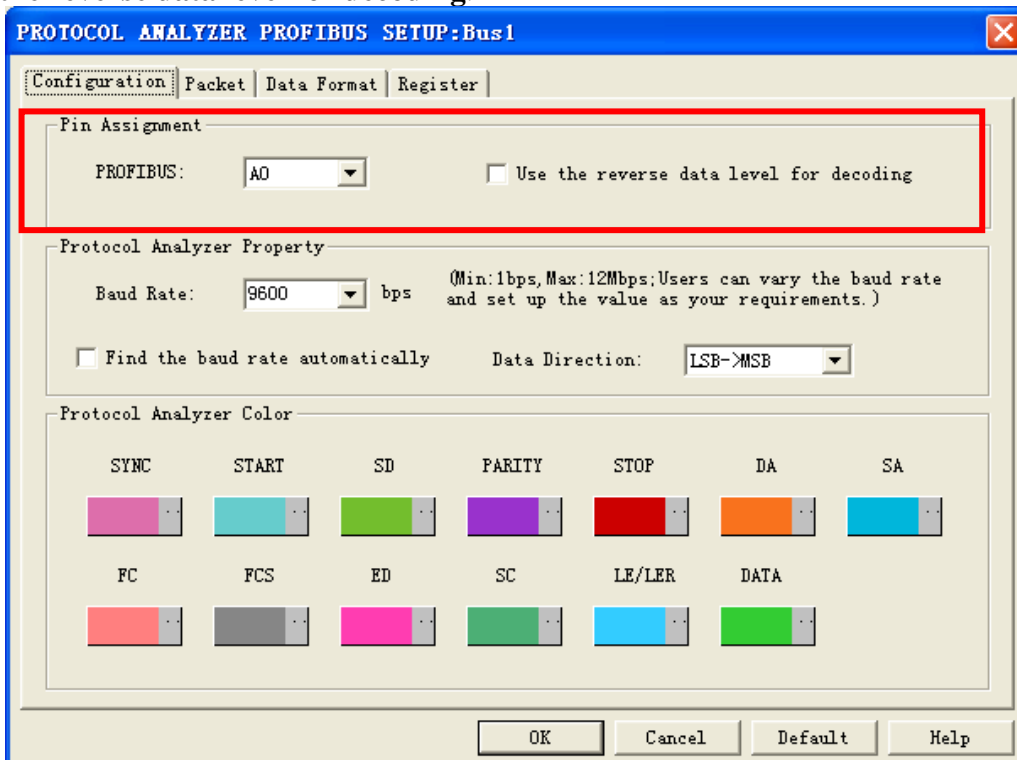




**STEP 5.** Click **Parameters Configuration** again, and open the Configuration dialog box to set the parameters for the **Protocol Analyzer PROFIBUS**.

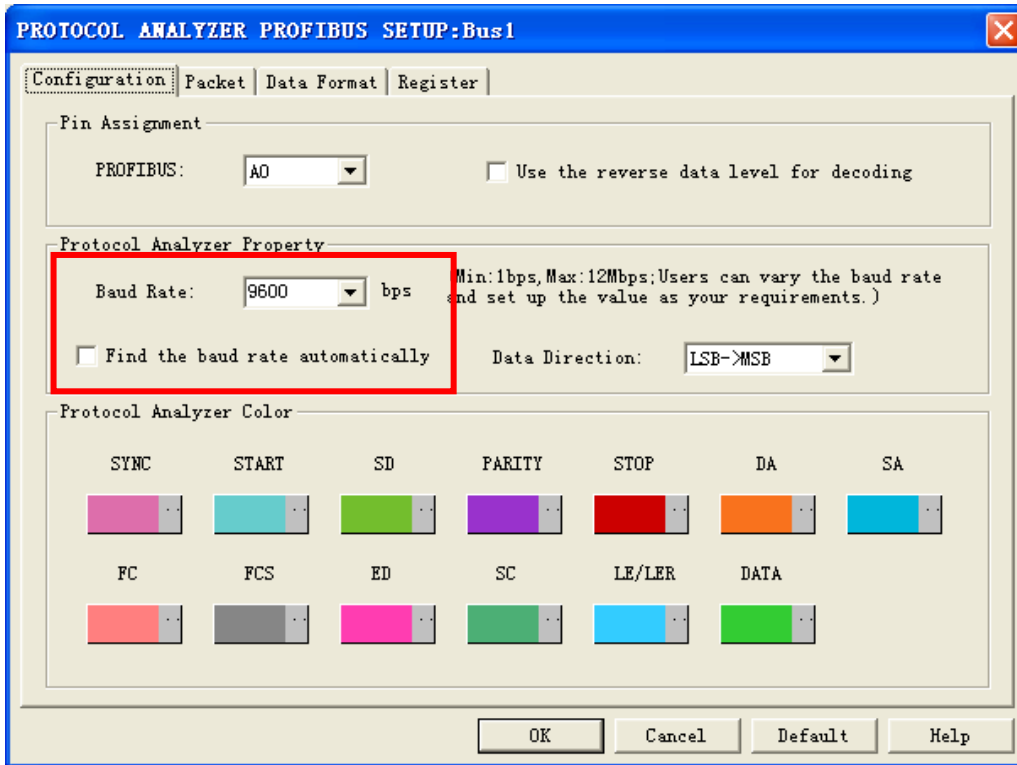


**STEP 6.** Set the **Pin Assignment** in the **Configuration** dialog box. Users can also select the option, **Use the reverse data level for decoding**.

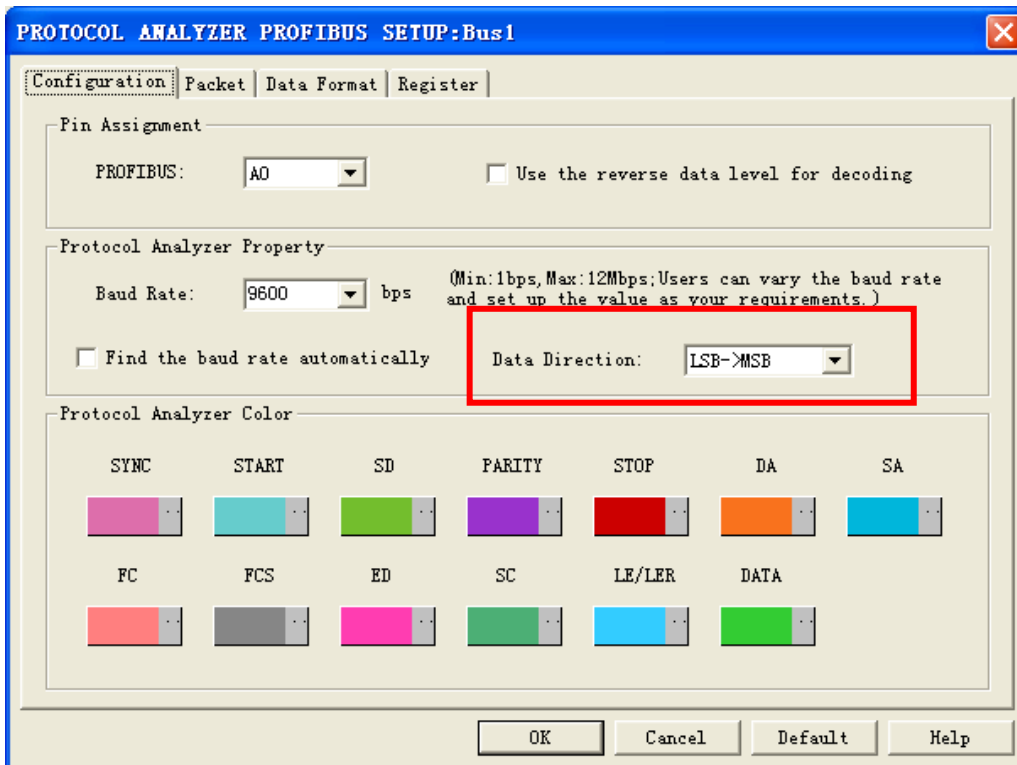




**STEP 7.** Set the **Baud Rate**, and the option, **Find the baud rate automatically**, can also be selected by users.

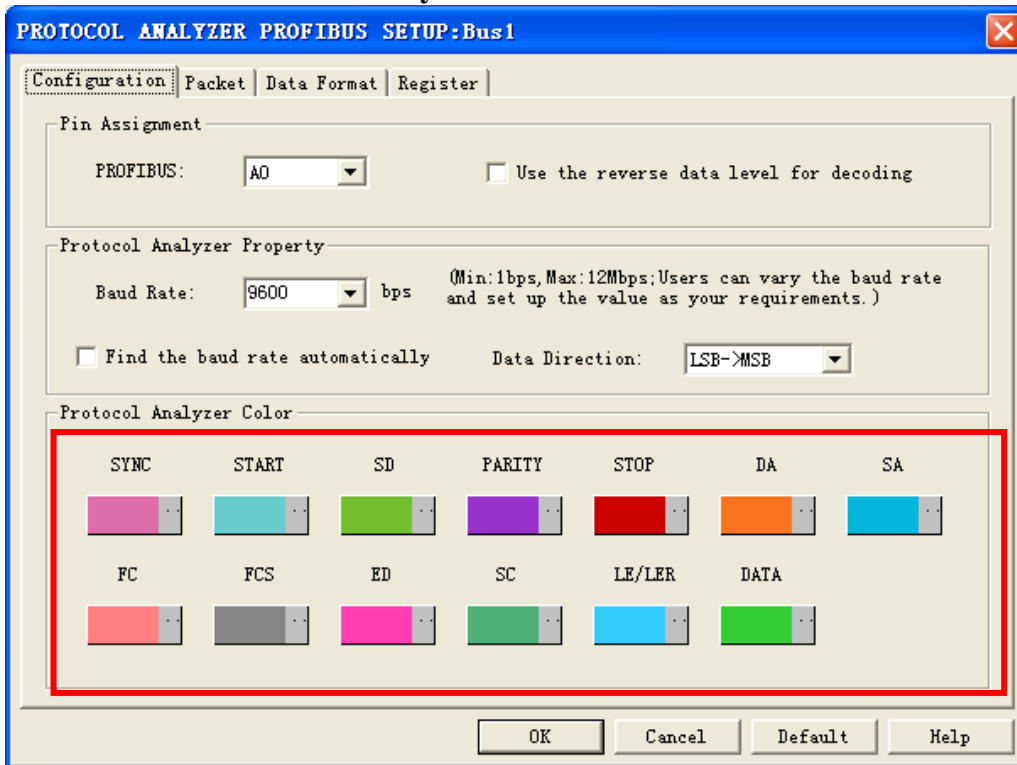


**STEP 8.** Set the **Data Direction**; users can select LSB->MSB or MSB->LSB from the pull-down menu; the default is LSB->MSB.



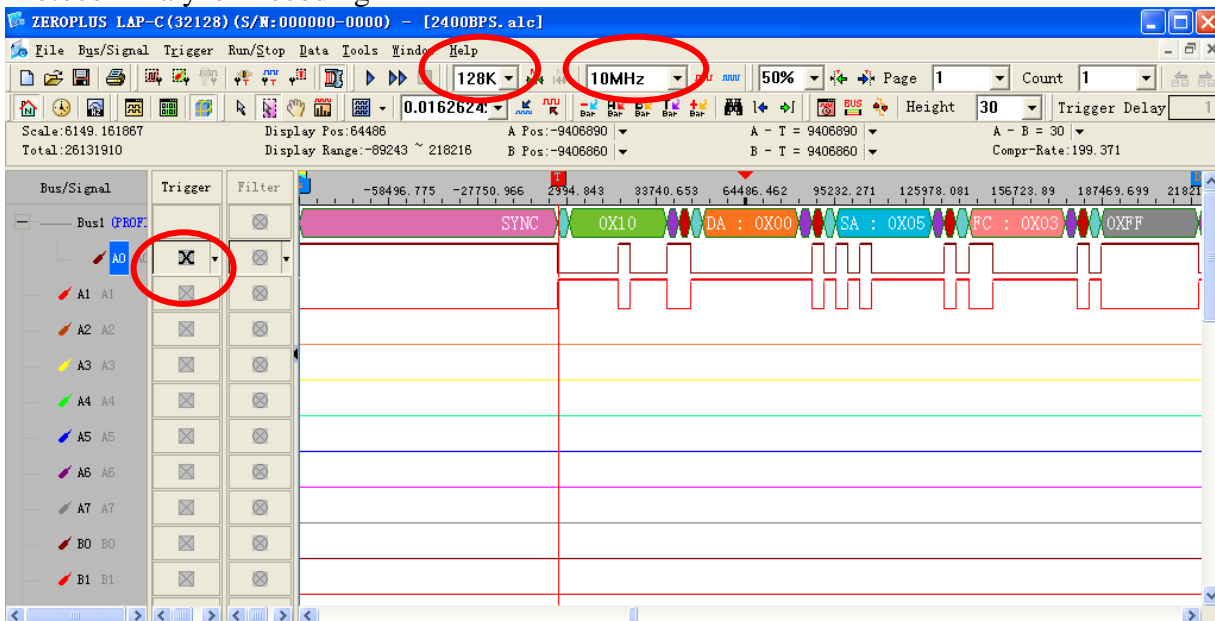


### STEP 9. Set the Protocol Analyzer Color.



**STEP 10.** Following pictures show the completion of the protocol analyzer decoding and the packet list. The trigger condition is set as Either Edge; the memory depth is 128K; the sampling frequency is 10MHz.

### Protocol Analyzer Decoding





### Packet List

