



**孕龍科技股份有限公司**  
**ZEROPLUS TECHNOLOGY CO.,LTD**

# Instrument Business Department

PS/2 Specification

Version: V1.0

## Content

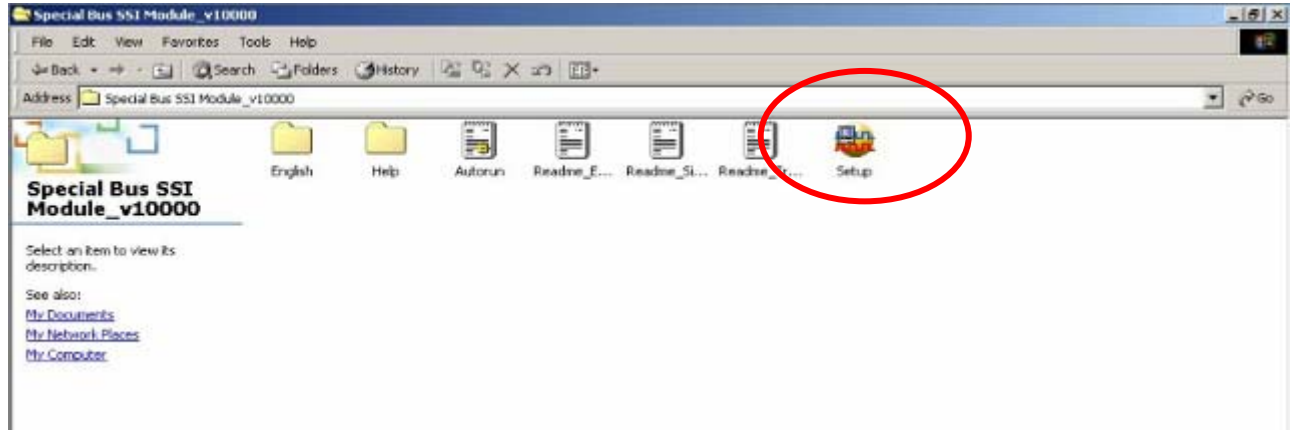
1	Software Installation.....	3
2	User Interface.....	7
3	Operating Instructions.....	9

## 1 Software Installation

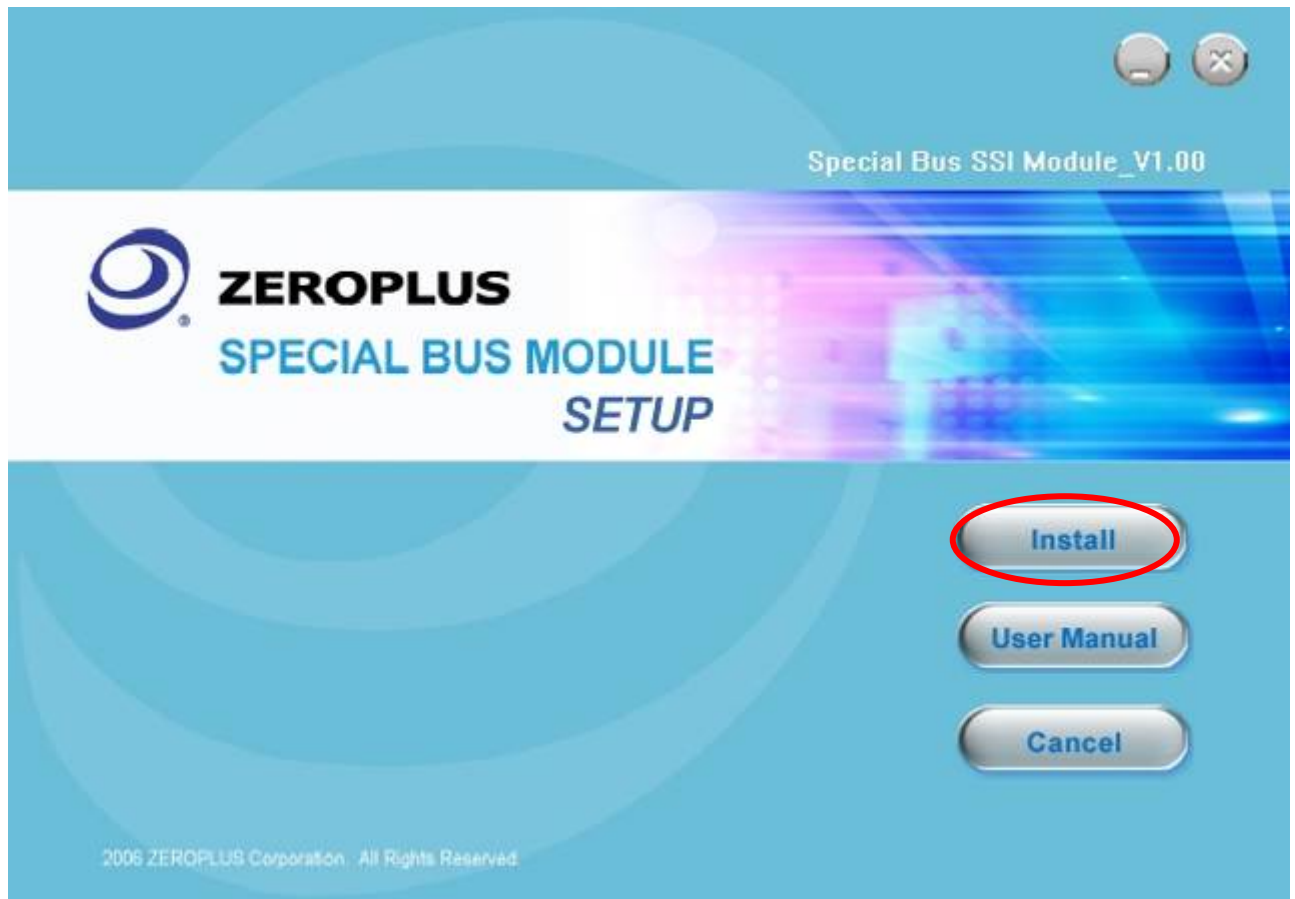
Please follow below steps to install the software:

※ Remarks: The installation steps for all buses are the same; you can complete installation as following procedures. The below is an example to install SSI bus

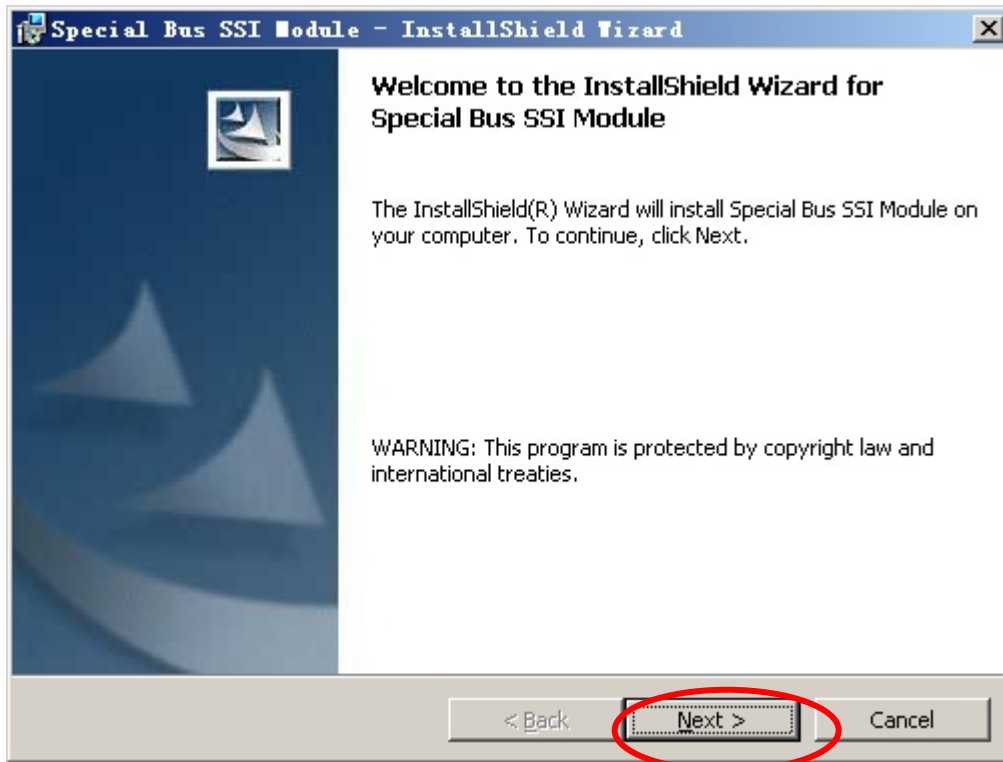
### STEP1. Install Bus Module .



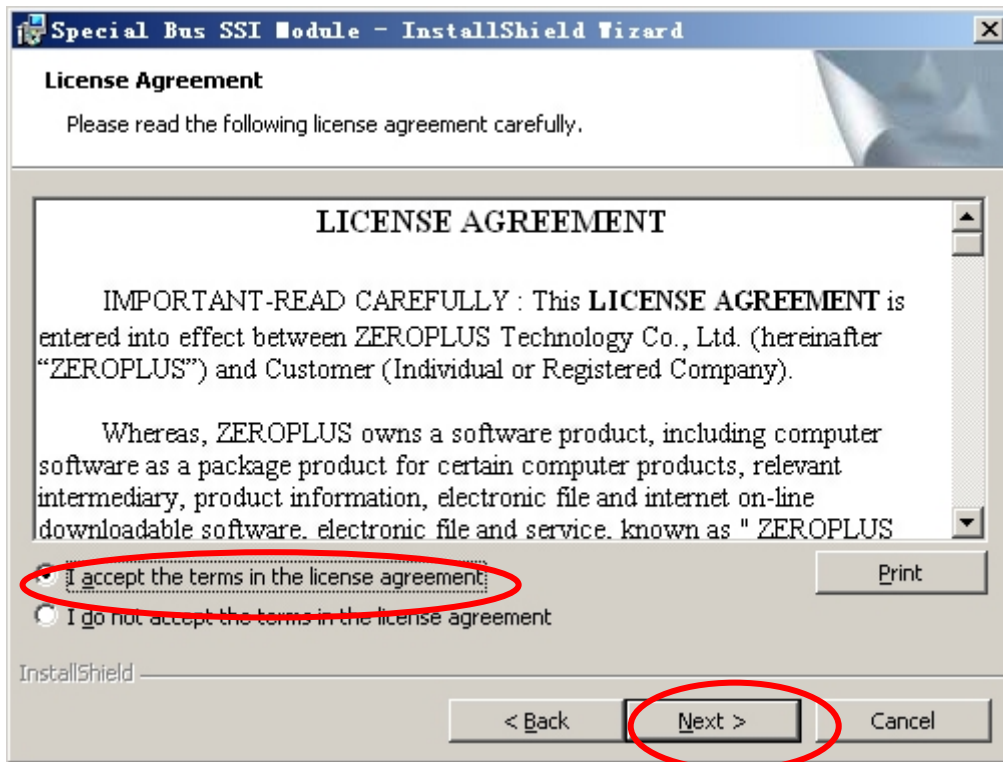
### STEP 2. Click Install.



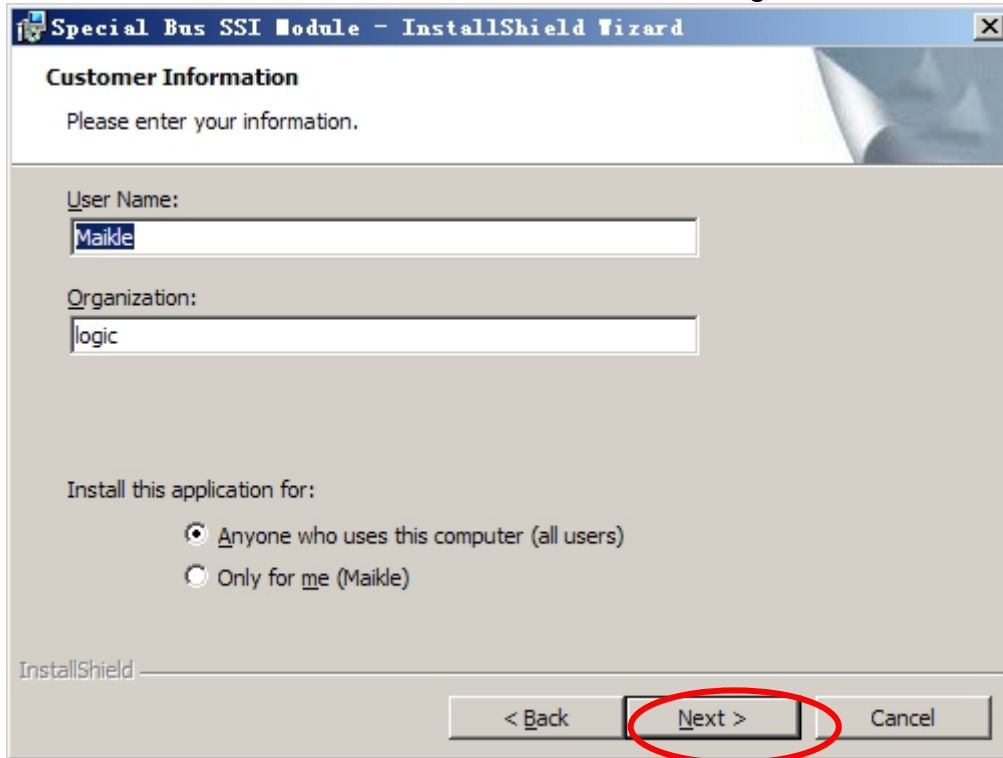
STEP 3. Click **Next**.



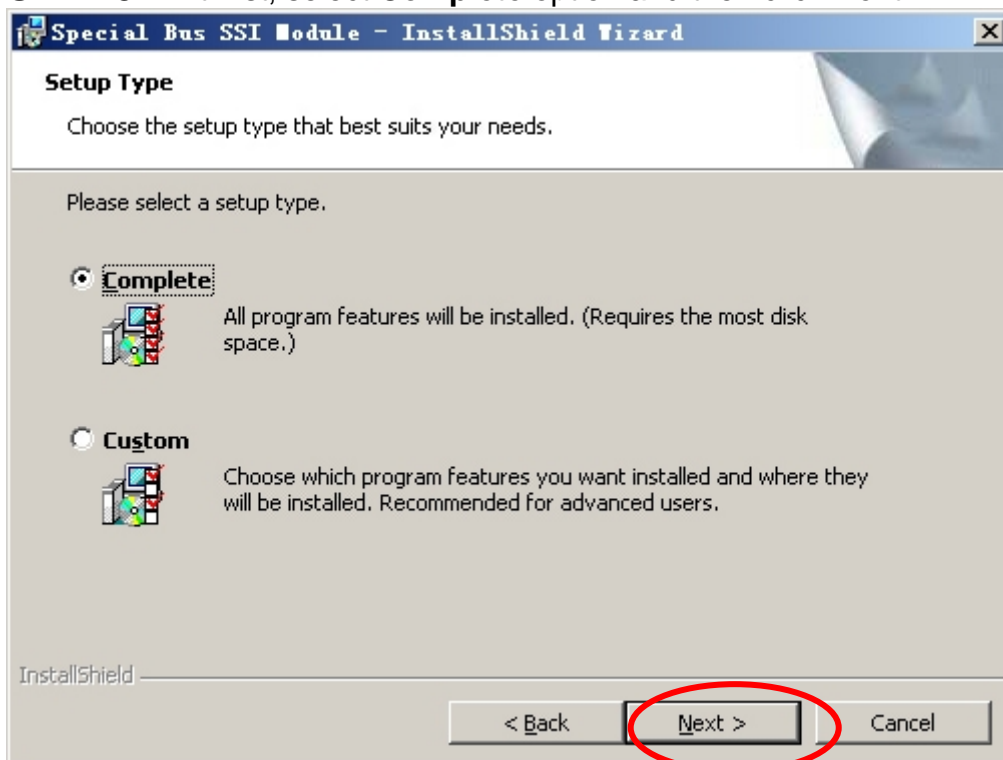
STEP 4. Select **I accept the terms in the license agreement** option, and then press **Next**.



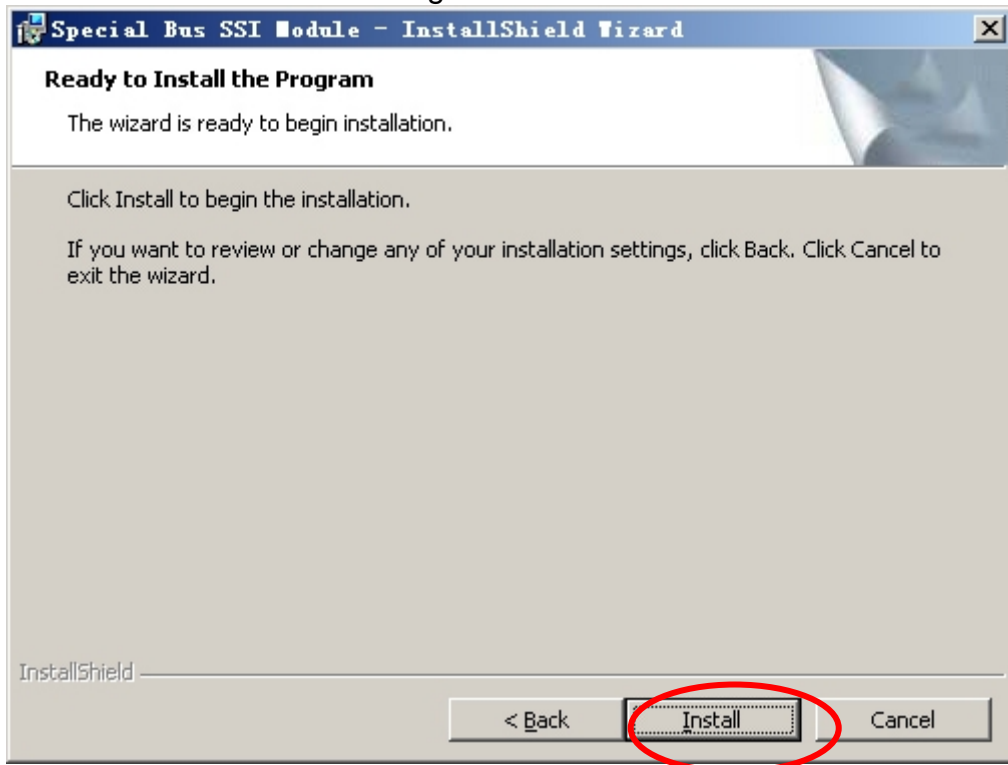
STEP 5. Fill in user information in the below dialog box and click **Next**.



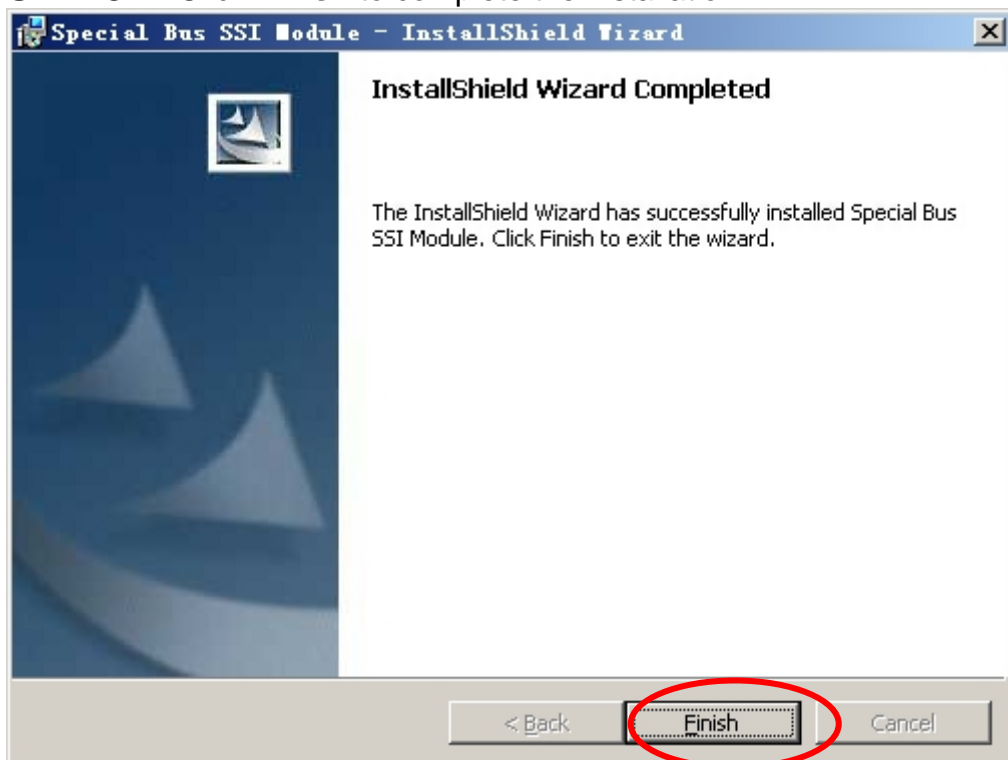
STEP 6. At first, select **Complete** option and then click **Next**.



STEP 7. Click **Install** to begin the installation.



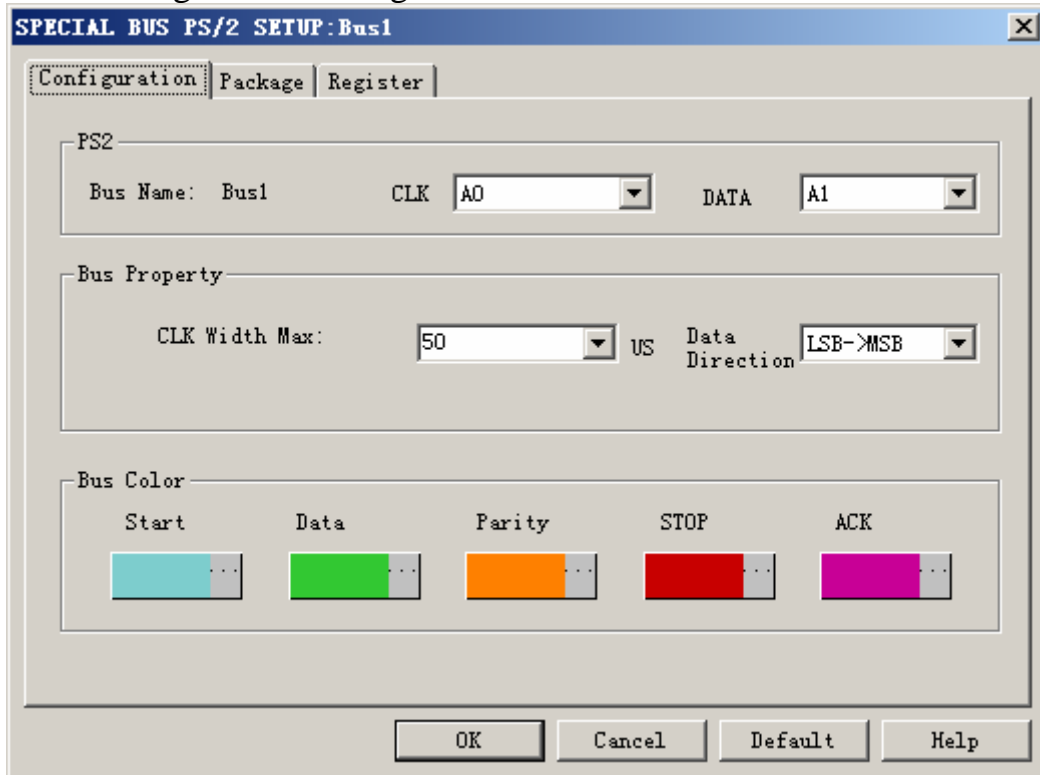
STEP8 . Click **Finish** to complete the installation.



## 2 User Interface

Please refer to below images to select options of setting PS/2 Module

### PS/2 Configuration Dialog Box



**PS/2:** There are two channels for PS/2 as signal line, herein, it only marks channel name and the sign for channel selection.

CLK channel:The default is A0.

DATA channel:The default is A1.

#### **Bus Settings:**

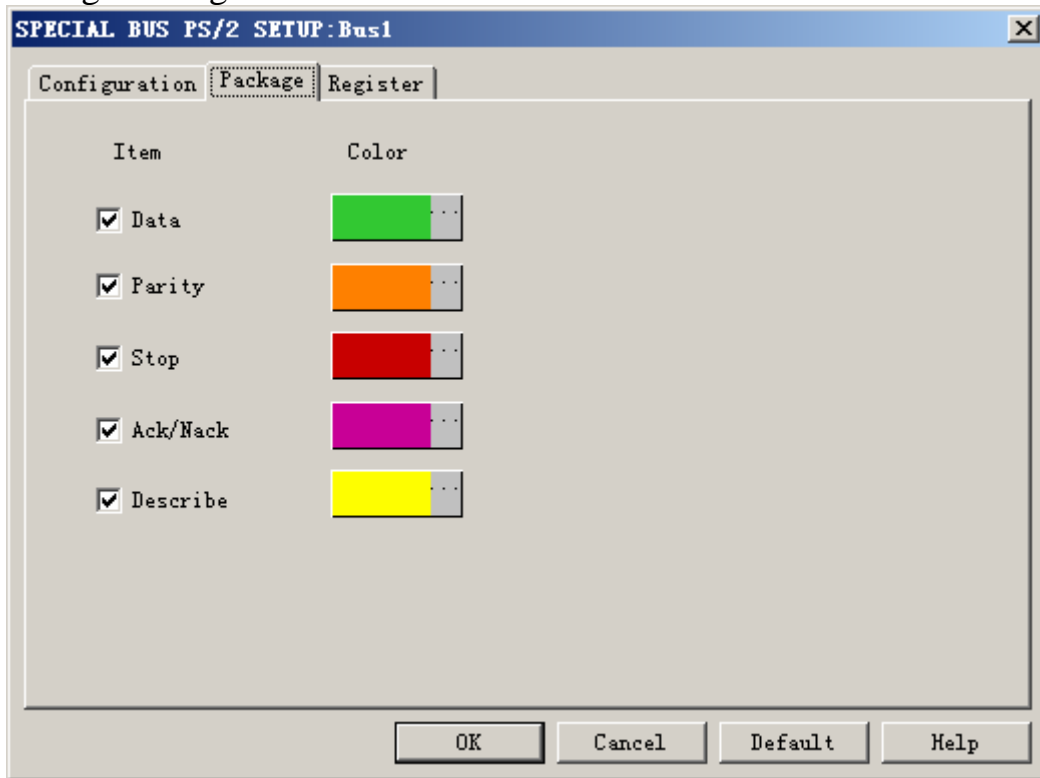
**CLK Width Max:**The default is 50US,user can select from the dropdown menu or enter a value within the range 50-100.

**Data Direction:** There are two options ,user can select from the dropdown menu, the default is LSB->MSB

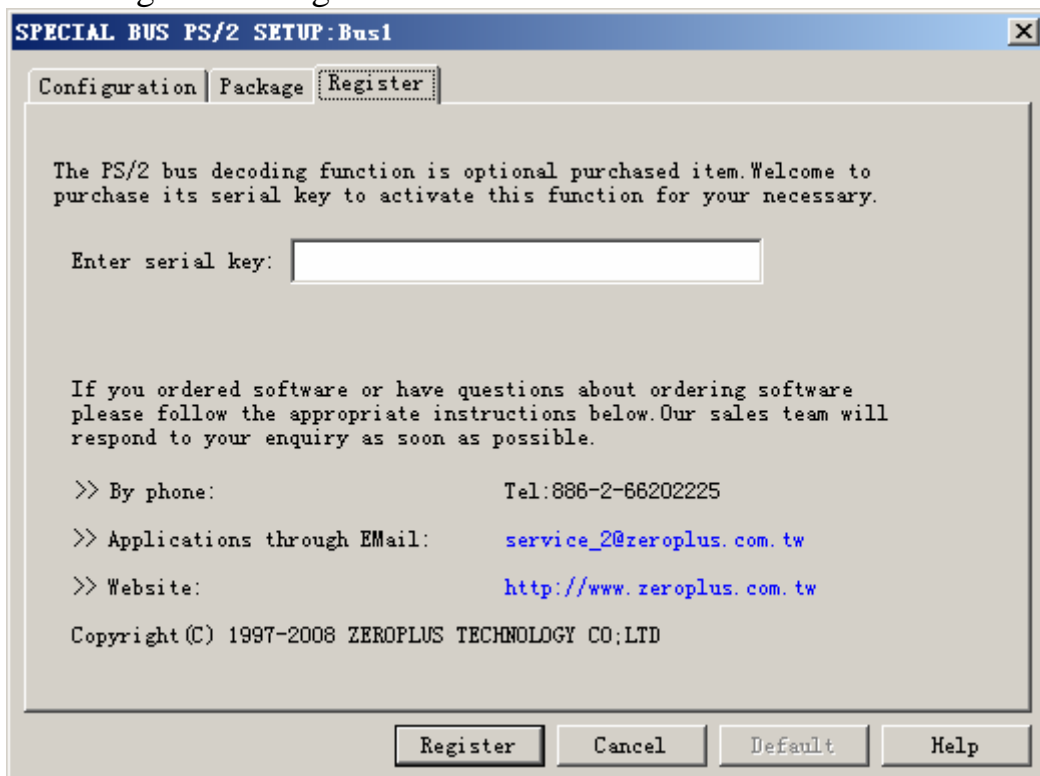
#### **Bus Color:**

START  
DATA  
PARITY  
STOP  
ACK

## PS/2 Package Dialog Box



## PS/2 Register Dialog Box

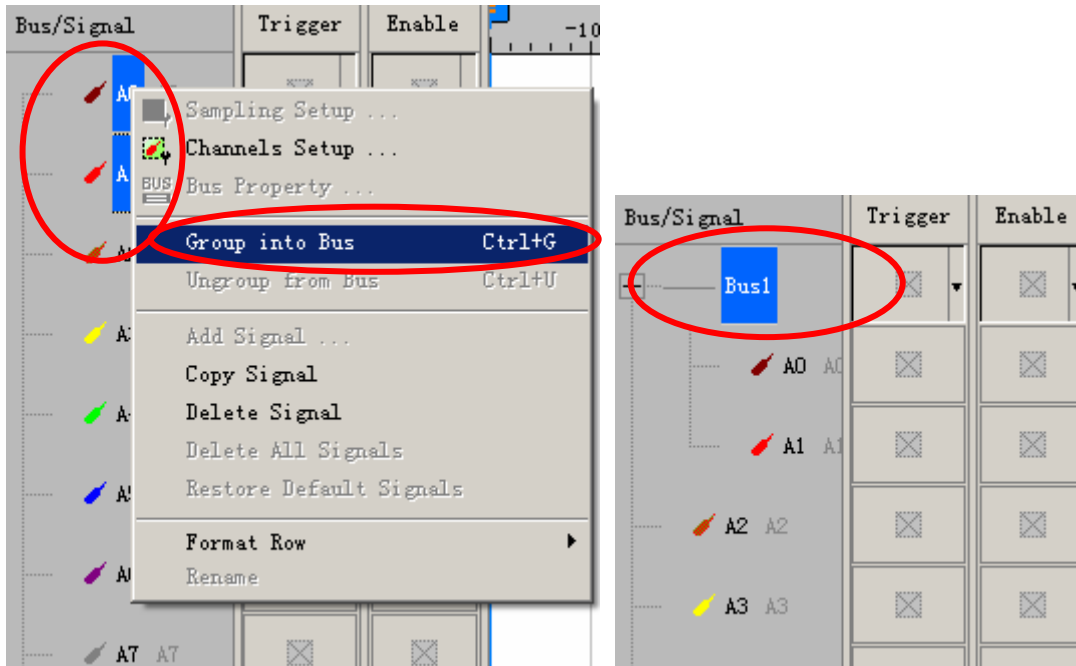


There is Zeroplus company information. If you have any questions about software Operations, you can contact Zeroplus by Telephone or Email.

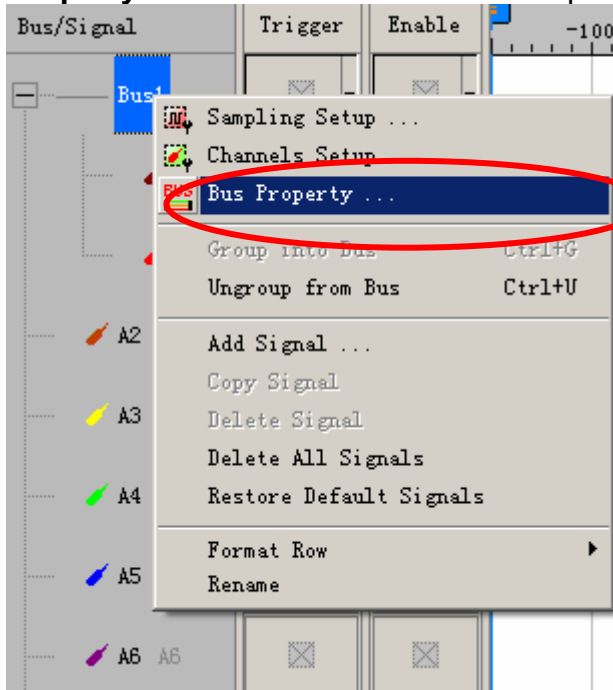


### 3. Operating Instructions

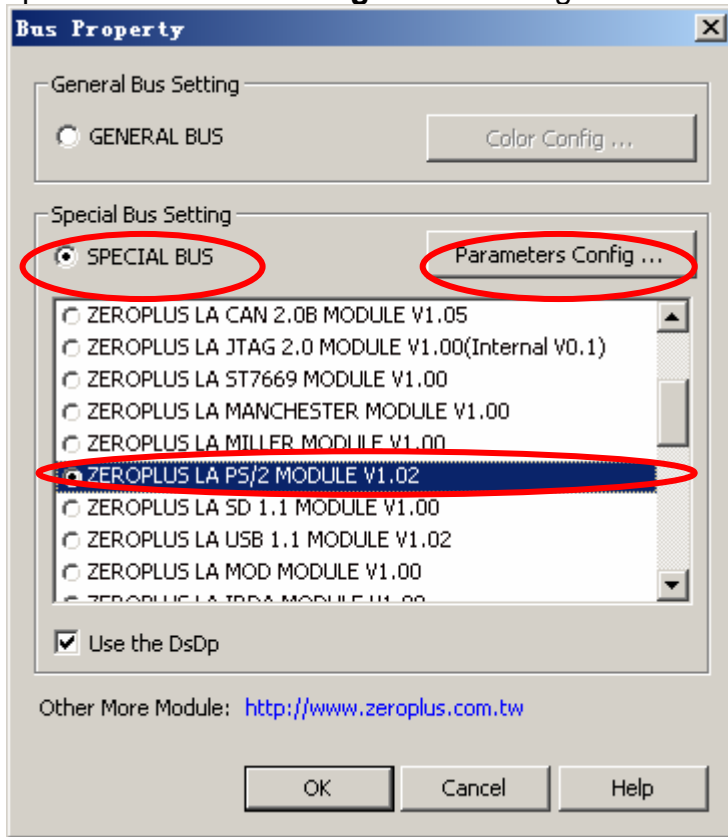
STEP 1. At first, group the unanalyzed channels into bus1 by pressing the **Right Key** on mouse.



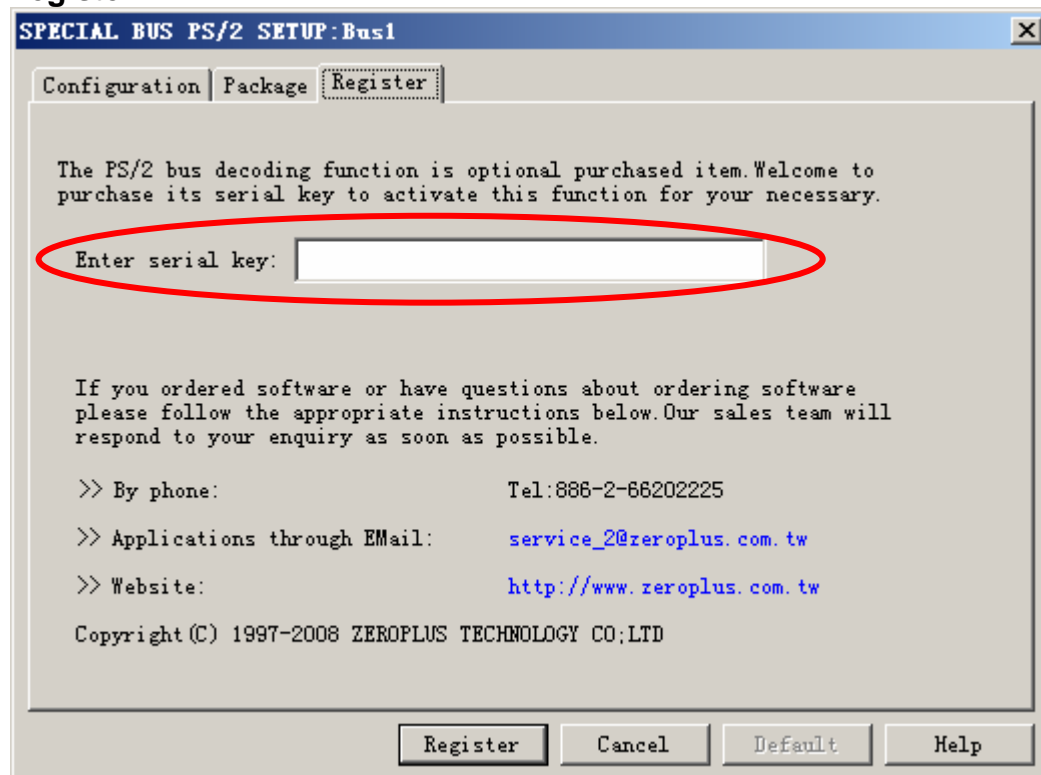
STEP 2. Select **Bus1**, then press **Right key** on mouse to list menu, then press **Bus Property** or **Bus** bar on the toolbar to open **Bus Property** dialog box.



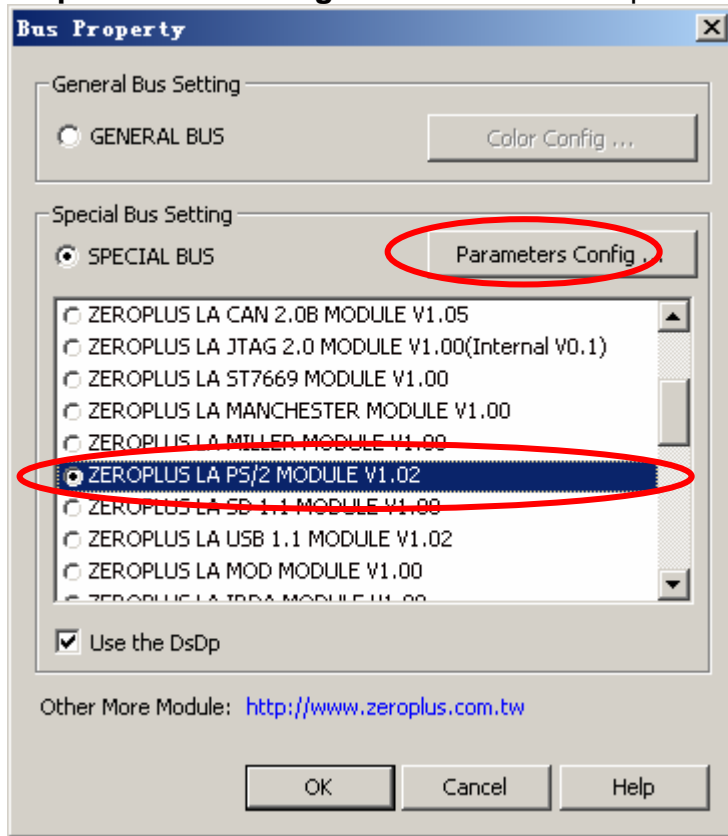
STEP 3. For Special Bus PS/2 Parameter Configuration, select Special Bus, and then choose **ZEROPLUS LA PS/2 MODULE V1.02** . Next click **Parameters Configuration** to open **Parameters Configuration** dialog box.



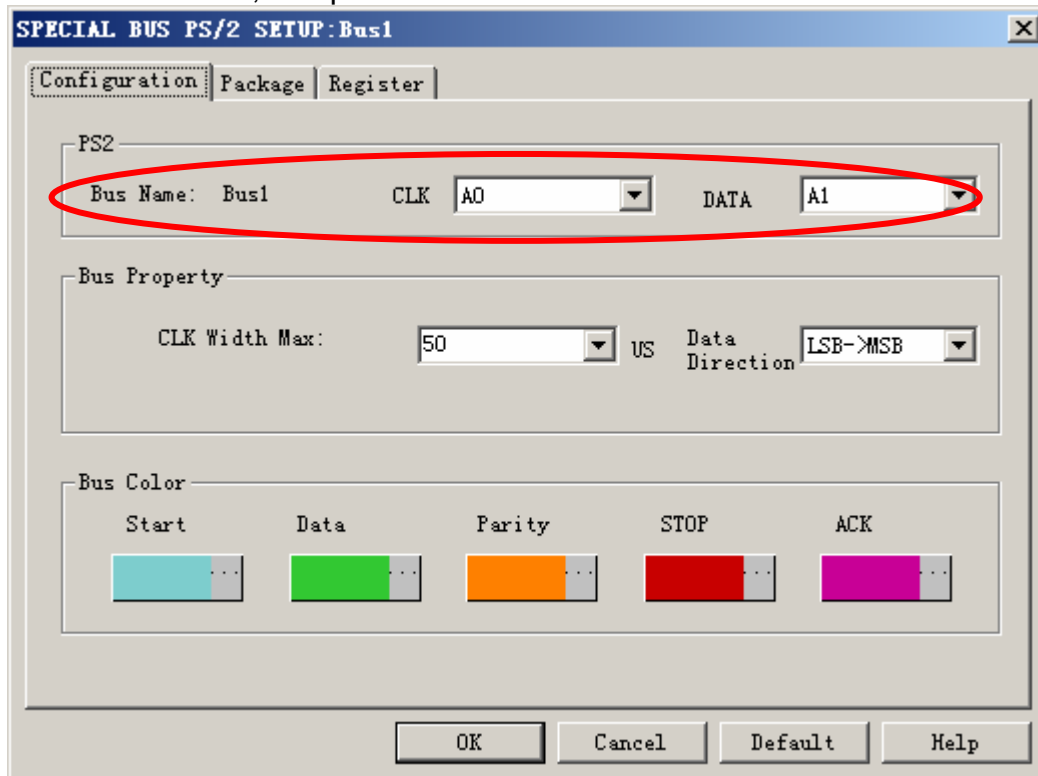
STEP 4. Press Register tab to type the serial key number of logic analyzer. Then, press **Register**.



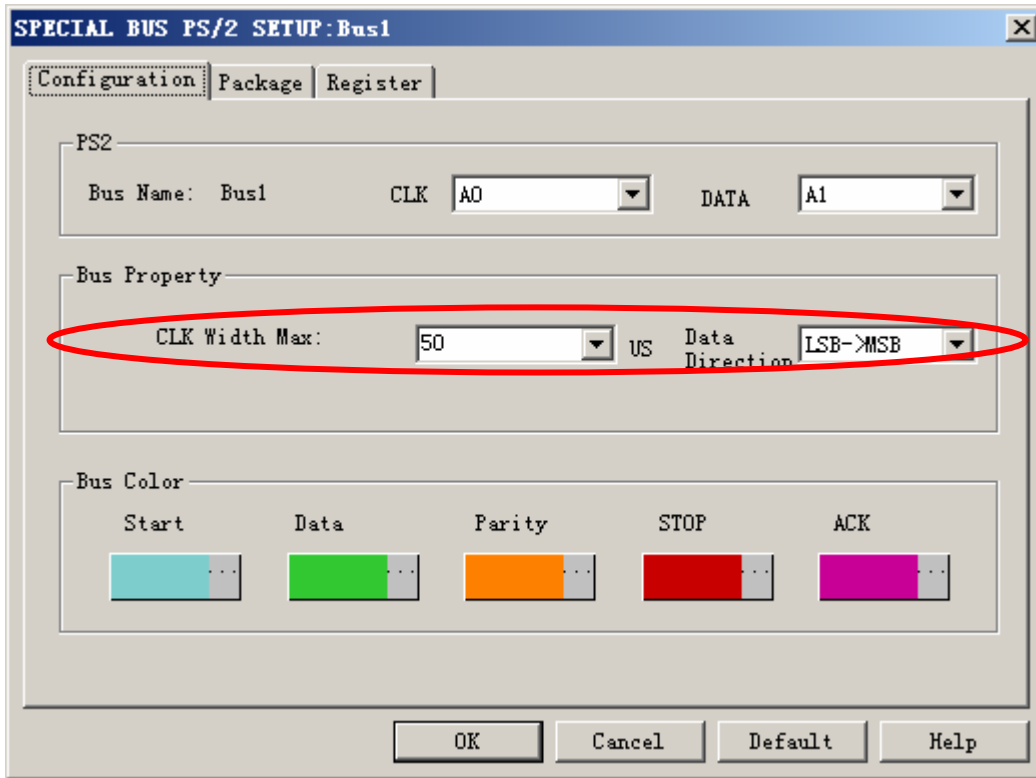
STEP 5. After completing Register, come back to the **Bus property** dialog box, then click the **parameters configuration** to start the Special Bus PS/2 setup.



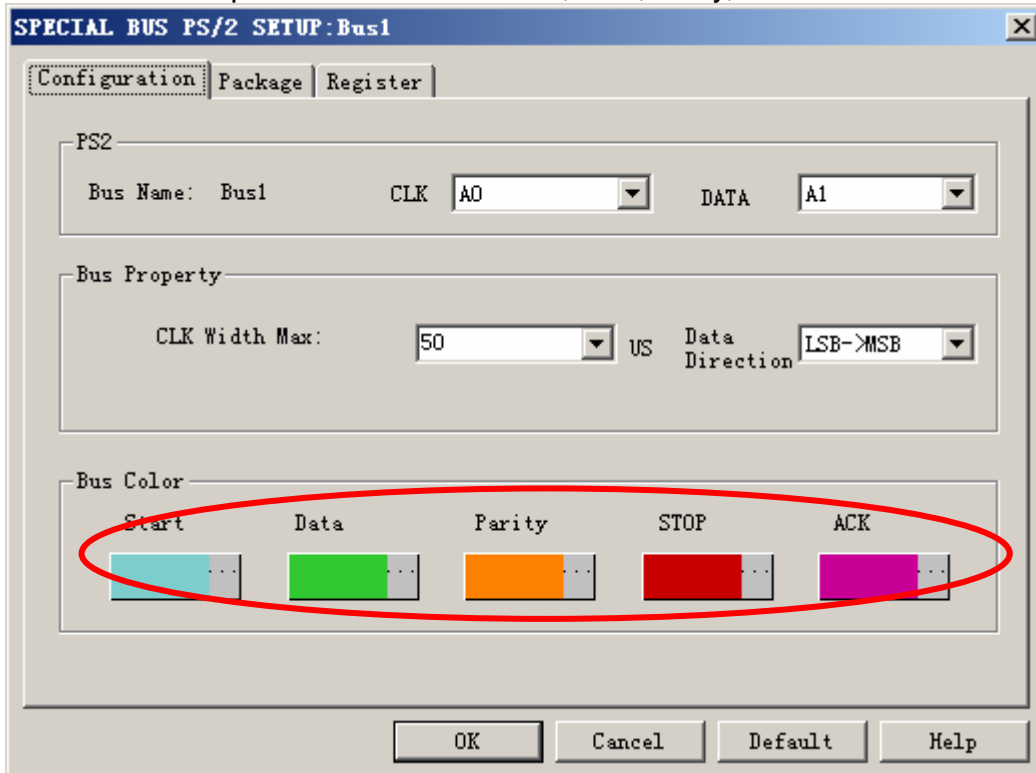
STEP 6. At first ,set up the two channels for PS/2



STEP 7. After setting the channels ,it turns to set Bus property ,which includes CLK Width Max and Data Direction

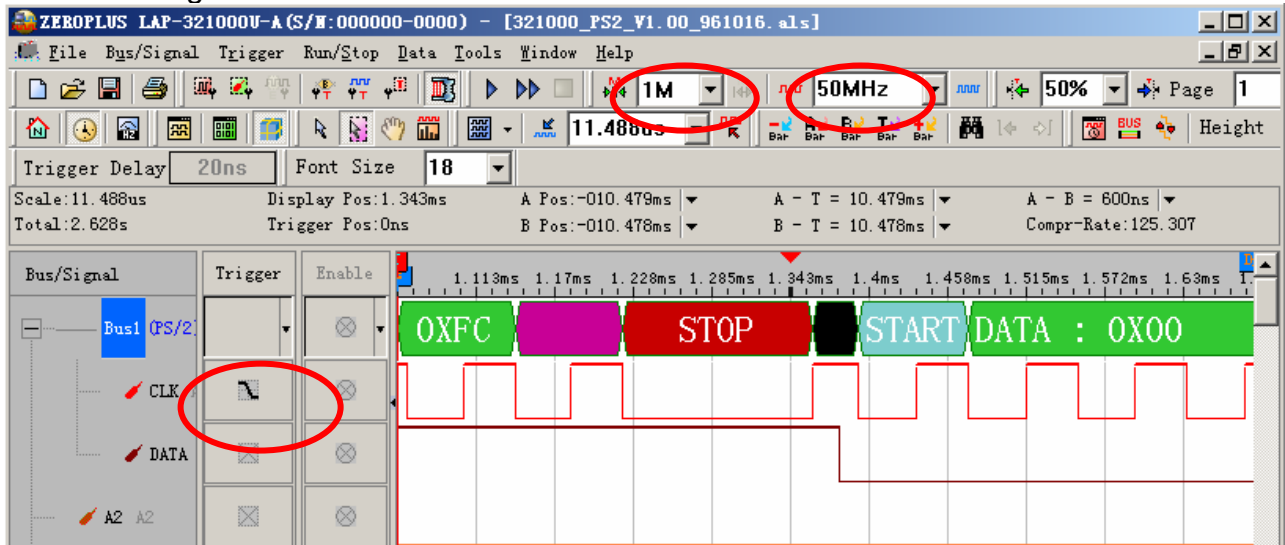


STEP 8. Set up the bus color for Start,Data,Parity,STOP and ACK.



STEP 9. Following pictures show that the completion of the Bus decoding and package list. The conditions are set as A1 Falling edge, Memory depth is 1M, Sampling frequency is 50MHz.

**Bus Decoding**



**Package List**

