



孕龍科技股份有限公司
ZEROPLUS TECHNOLOGY CO.,LTD

Instrument Business Department

PSB Specification

Version : V1.0

Content

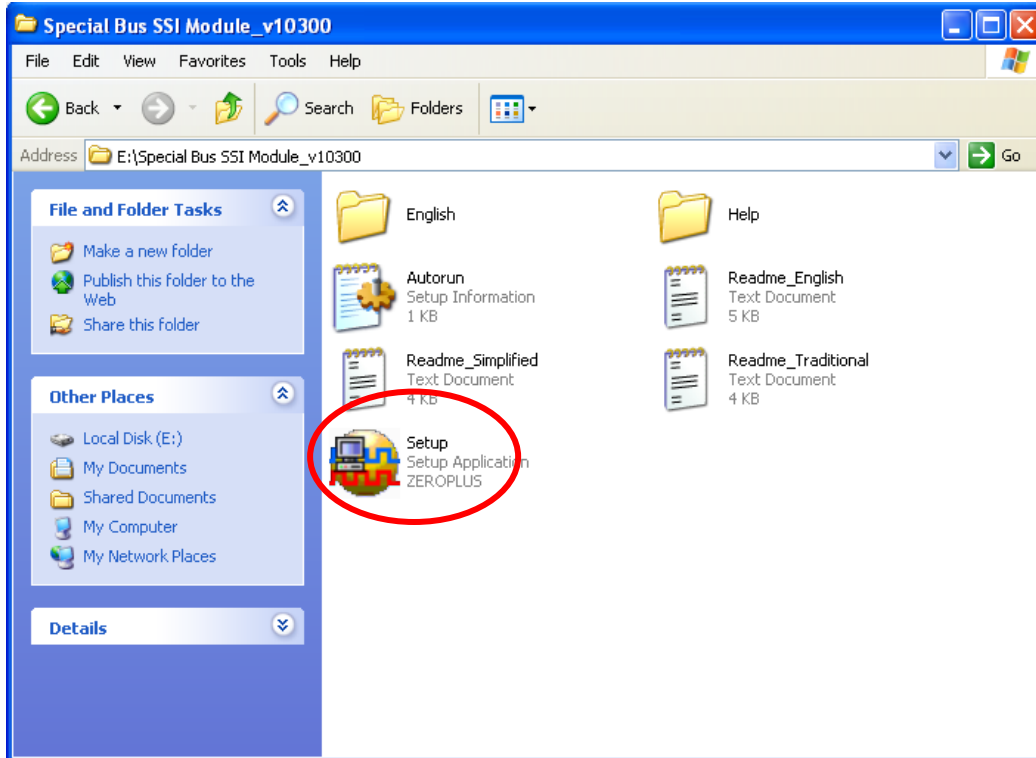
1	Software Installation	3
2	User Interface	7
3	Operating Instructions	9

1 Software Installation

Please install the software as the following steps :

※ Remark: The installation steps for all buses are the same; you can complete installation by following procedures. The below is an example to install SSI bus.

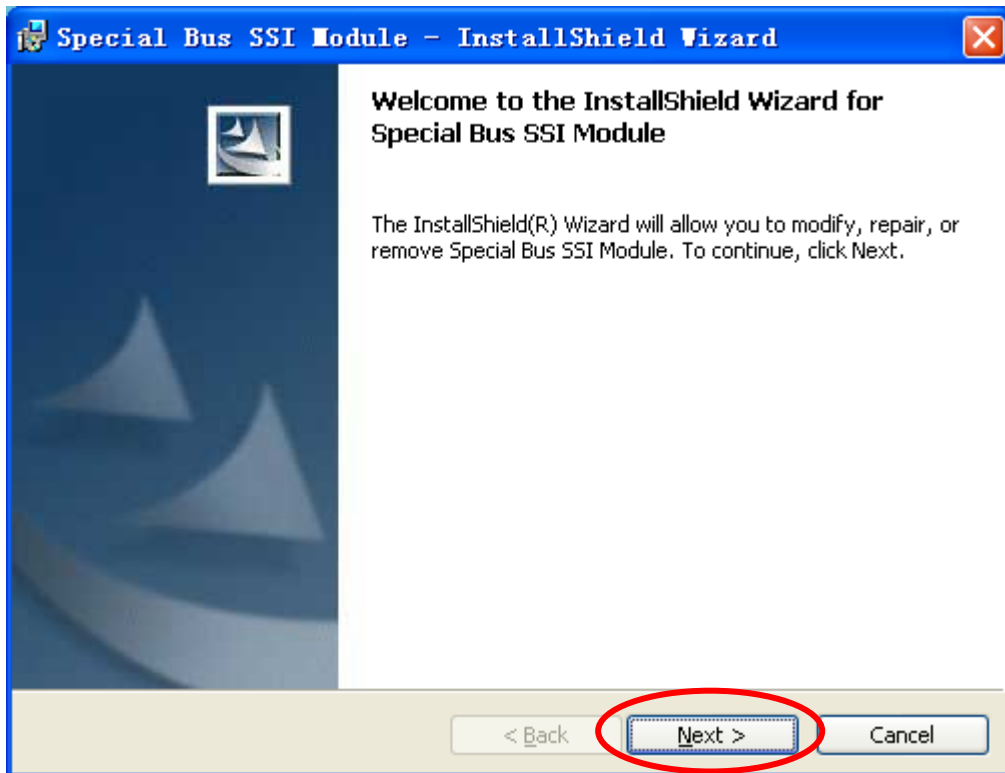
STEP 1. Install Bus Module



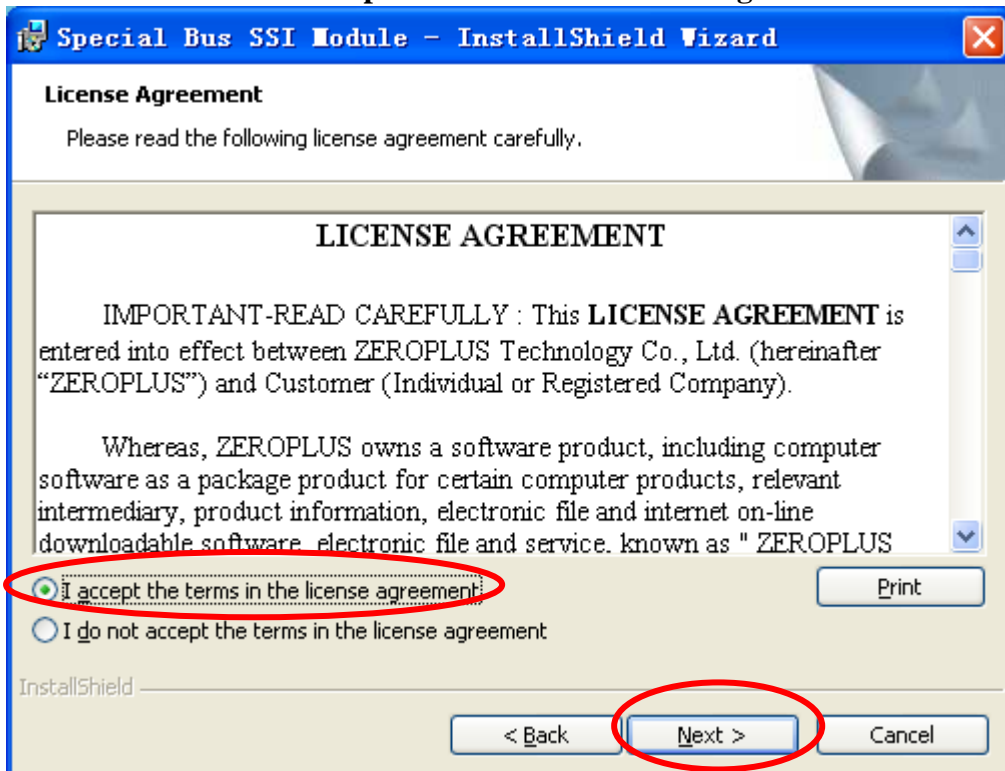
STEP 2. Click Install.



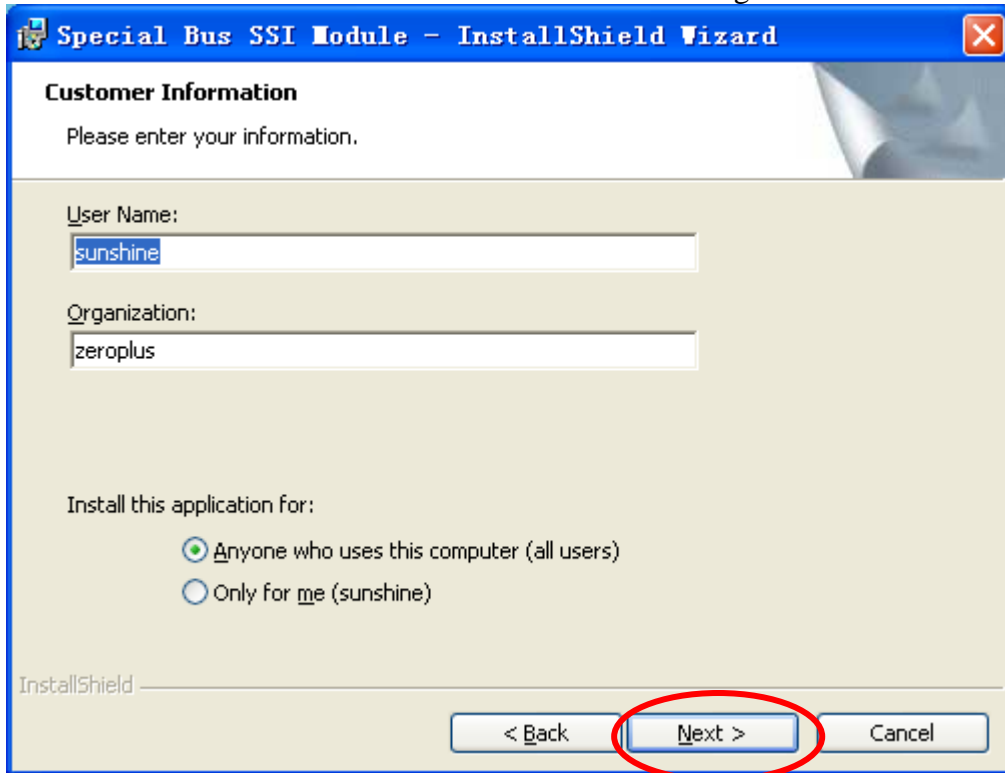
STEP 3. Click Next.



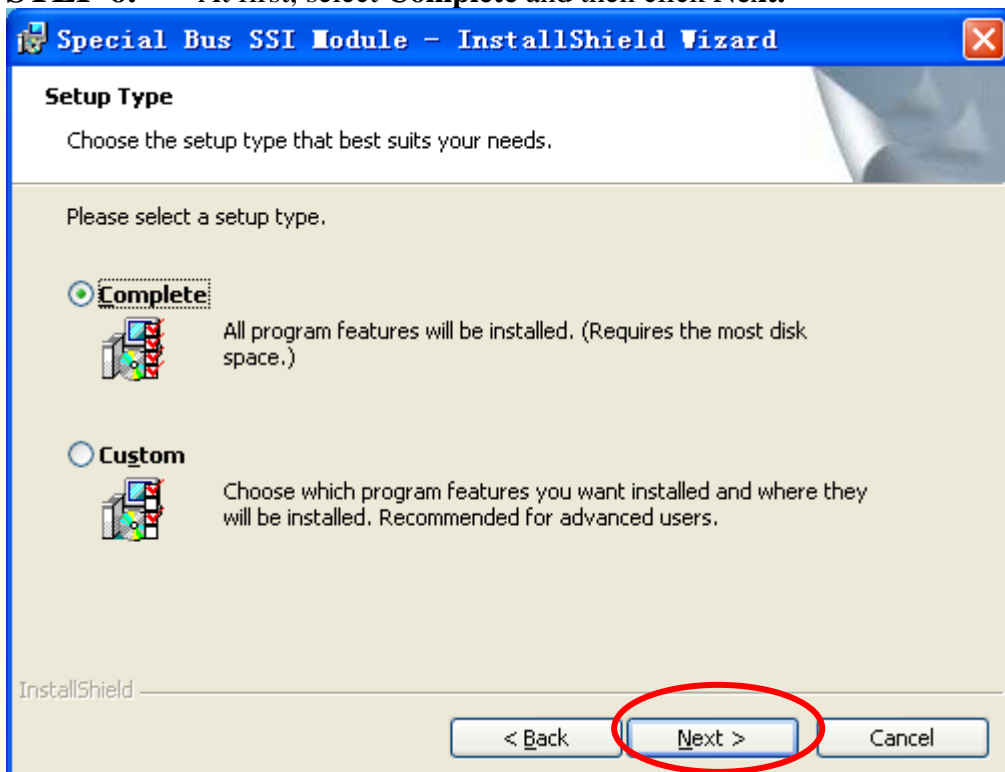
STEP 4. Select **I accept the terms in the license agreement**, and then press Next.



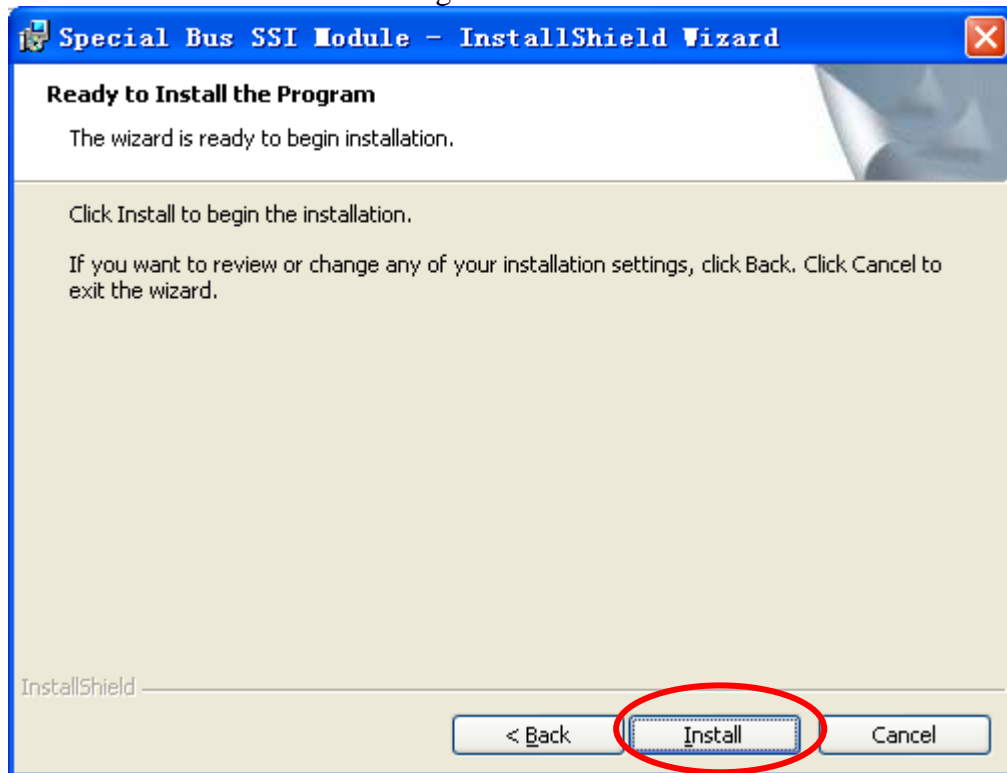
STEP 5. Fill in user information in the below dialog box and click **Next**.



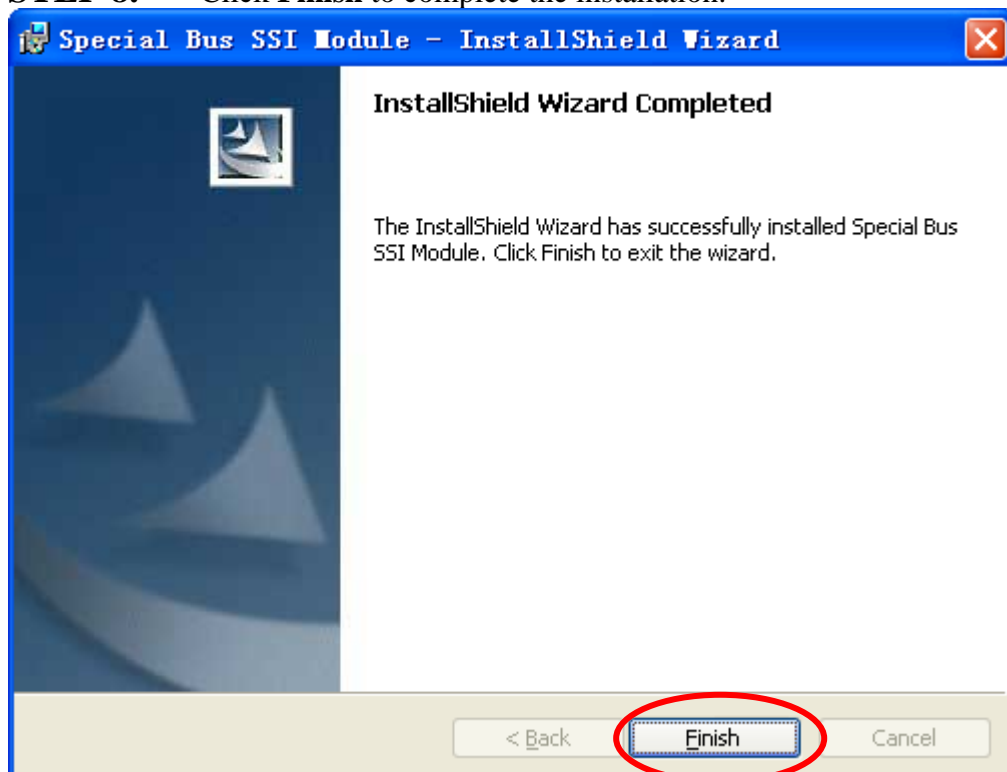
STEP 6. At first, select **Complete** and then click **Next**.



STEP 7. Click **Install** to begin the installation.



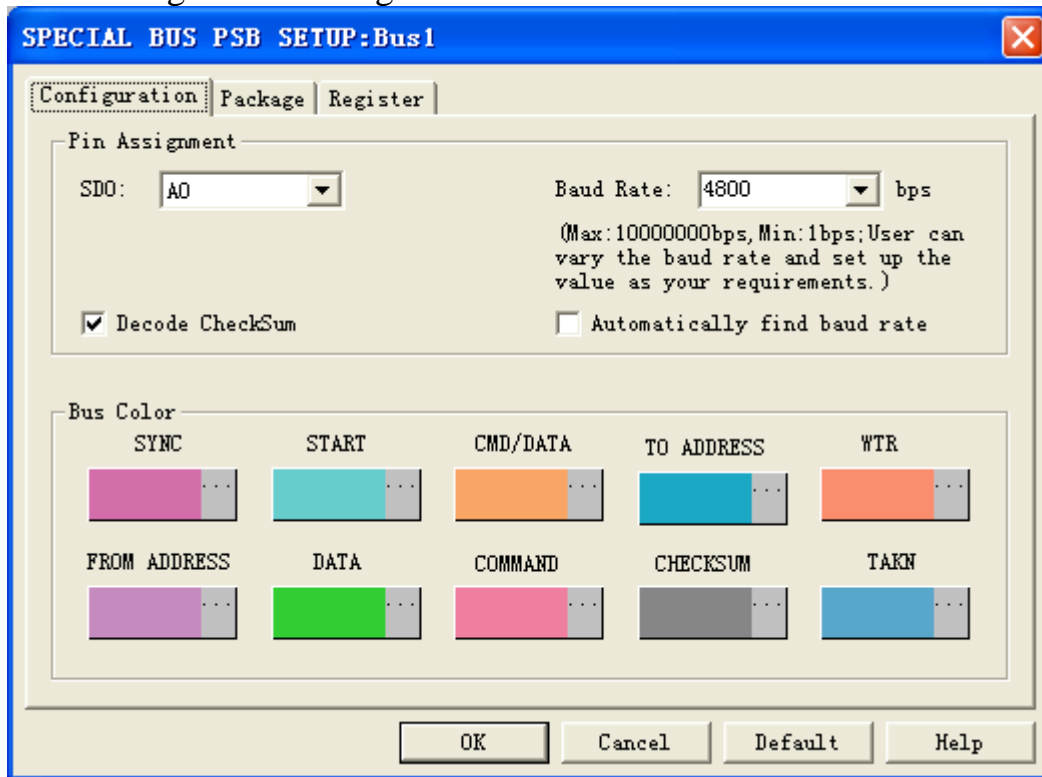
STEP 8. Click **Finish** to complete the installation.



2 User Interface

Please refer to the below images to select options of setting **PSB MODULE**.

PSB Configuration dialog box



Pin Assignment:

SDO : Set the needed channel from the dropdown menu.

Baud Rate : The baud rate can be selected from the dropdown menu or entered within the range of 1bps-10Mbps as users' requirements.

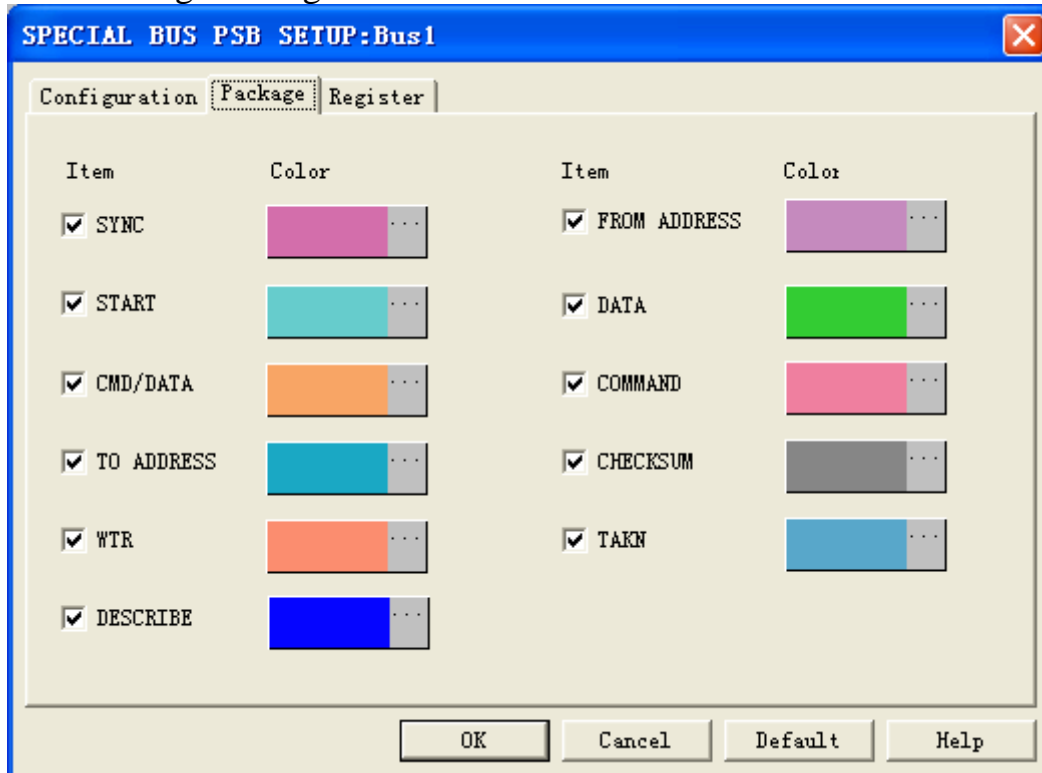
Decode Checksum: Users can select whether the value of Checksum .decode

Automatically Find Baud Rate: When the automatically find baud rate function is activated, the baud rate can be found automatically without users setting.

Bus Color

Users can vary the color of the Bus as their requirements.

PSB Package Dialog Box



In the package part, users can vary the displaying item and the package color.

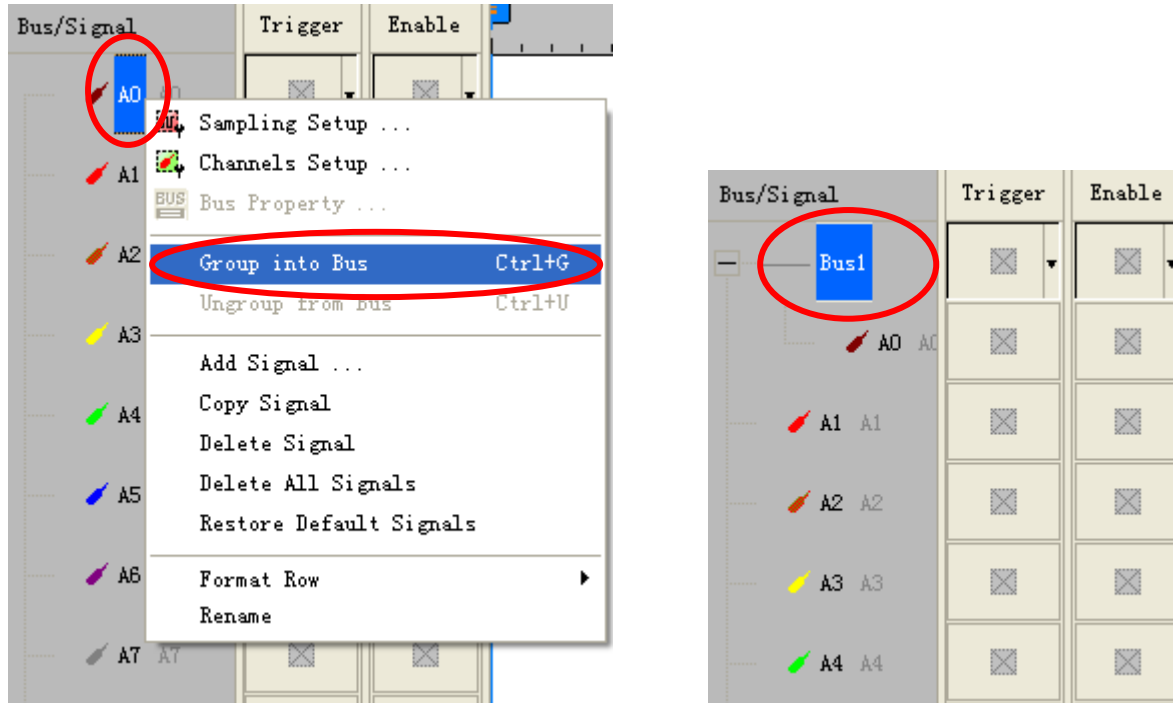
Register Dialog Box



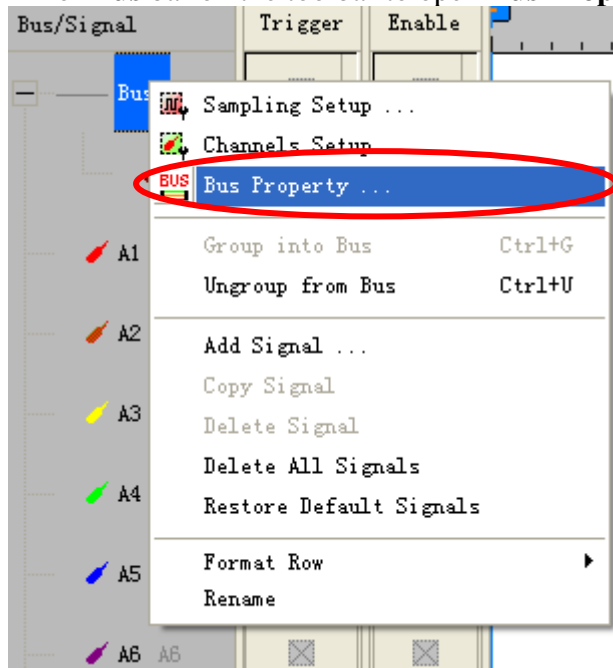
There is Zeroplus company information. If you have any questions about software operations, you can contact Zeroplus by Telephone or Email.

3 Operating Instructions

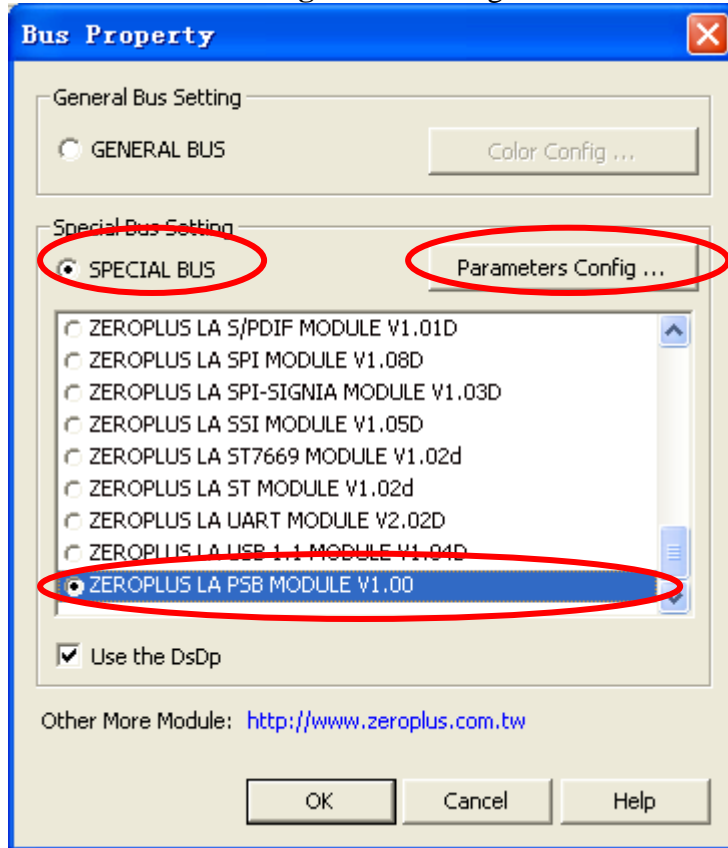
STEP 1. At first, group the unanalyzed channels into **bus1** by pressing the **Right Key** on mouse.



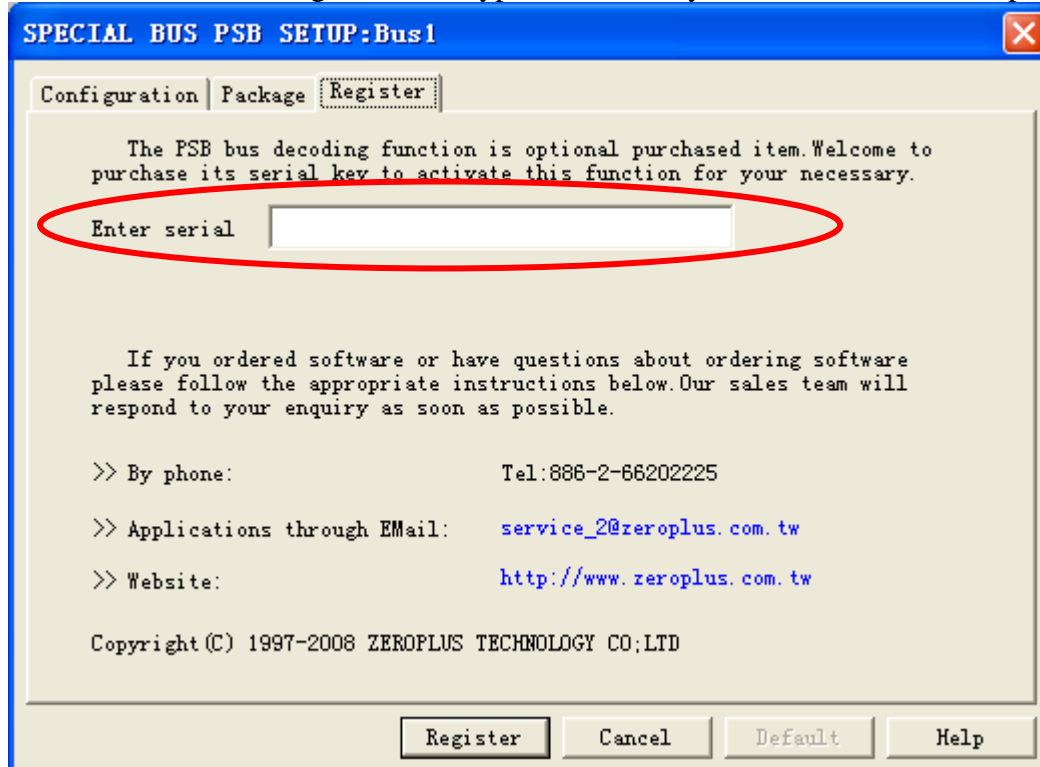
STEP 2. Select **Bus1**, then press **Right key** on mouse to list menu, then press **Bus Property** or **Bus bar** on the toolbar to open **Bus Property** dialog box.



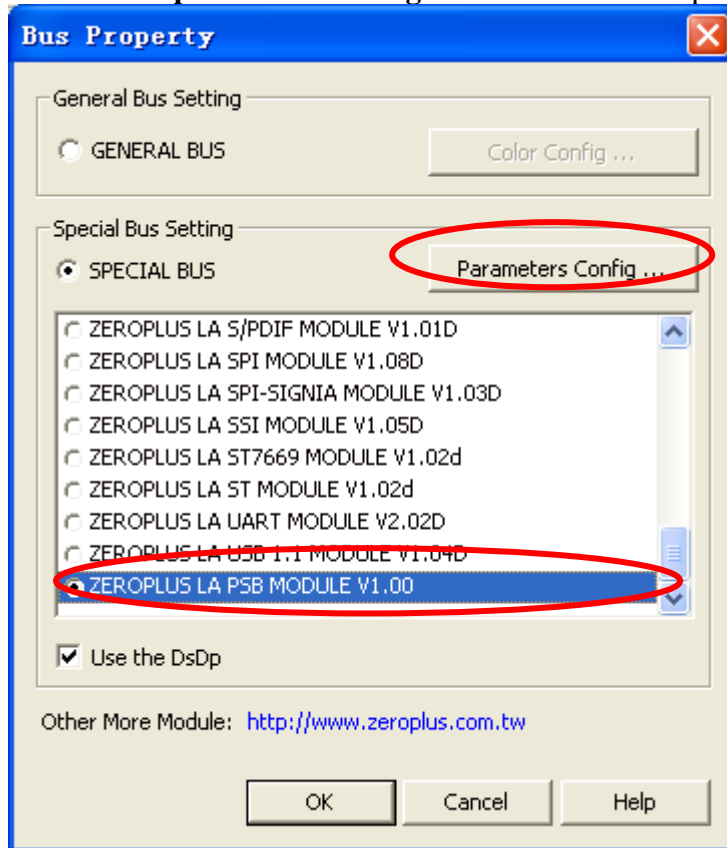
STEP 3. For Special Bus PSB Parameters Configuration, select Special Bus, and then choose **ZEROPLUS LA PSB MODULE V1.00**, next click **Parameters Configuration** to open **Parameters Configuration** dialog box.



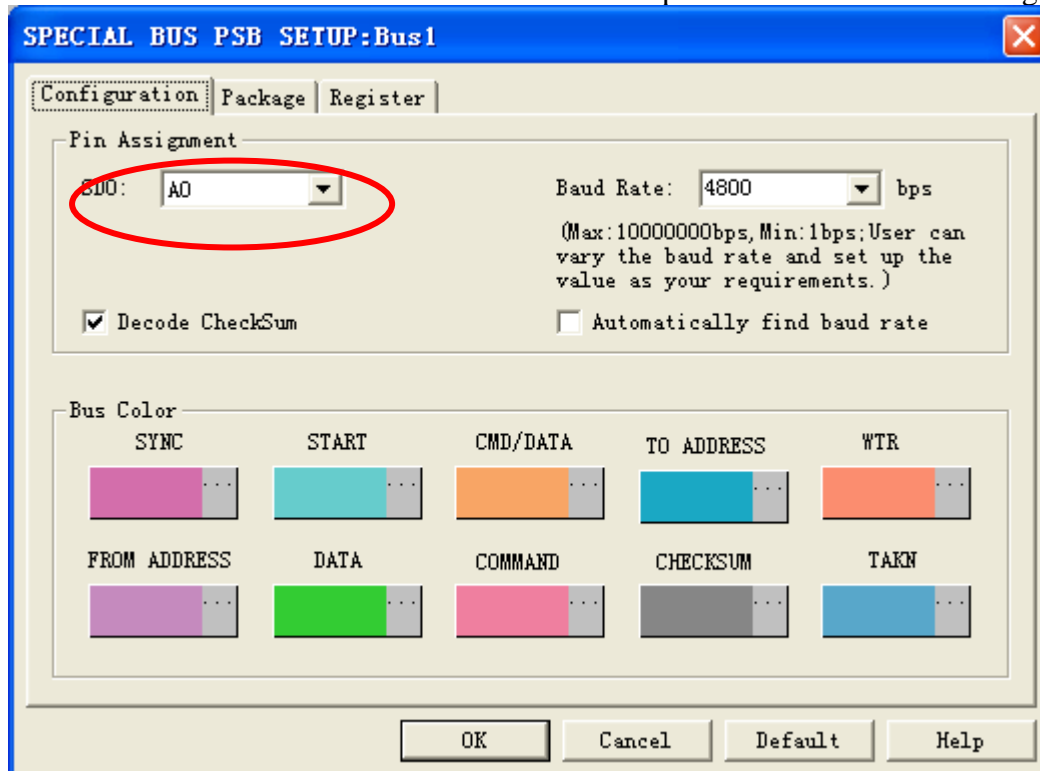
STEP 4. Press Register tab to type the serial key number of **PSB**. Then, press **Register**.



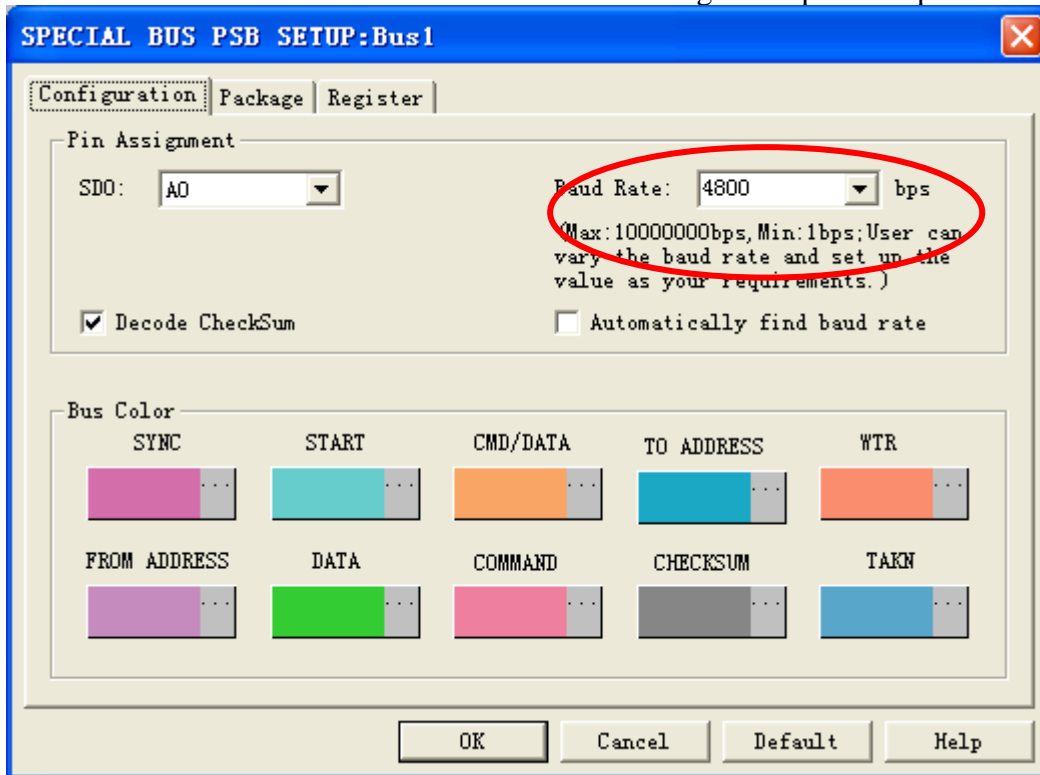
STEP 5. After completing **Register**, come back to the **Bus property** dialog box, and then click the **parameters configuration** to start the Special Bus PSB setup.



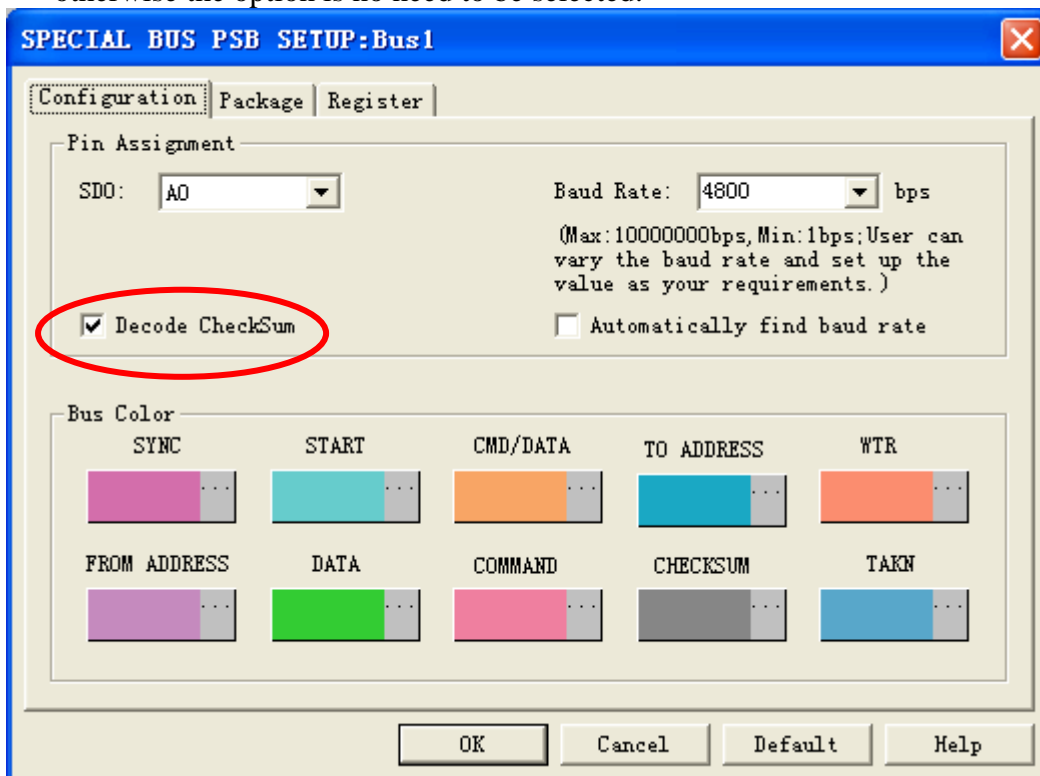
STEP 6. Set the needed channel from the dropdown menu in the Pin Assignment section.



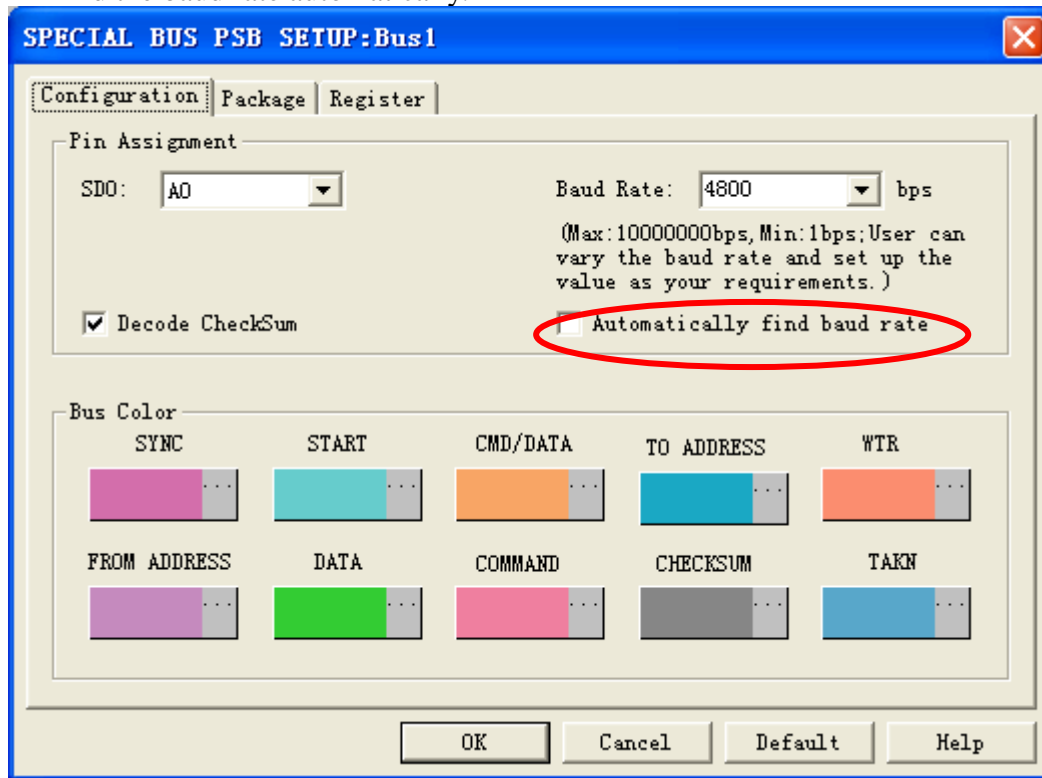
STEP 7. Set the needed baud rate within the range of 1bps-10Mbps.



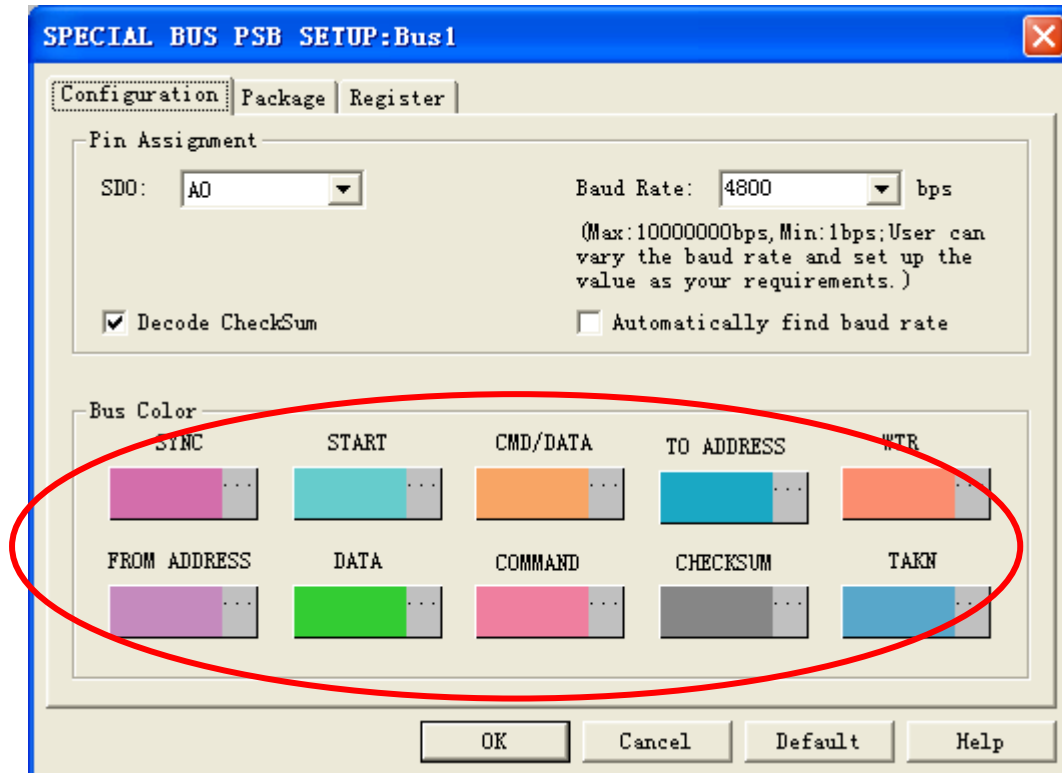
STEP 8. When users need to use CheckSum, they should select the CheckSum option; otherwise the option is no need to be selected.



STEP 9. The **automatically find baud rate** option should be selected, when users want to find the baud rate automatically.

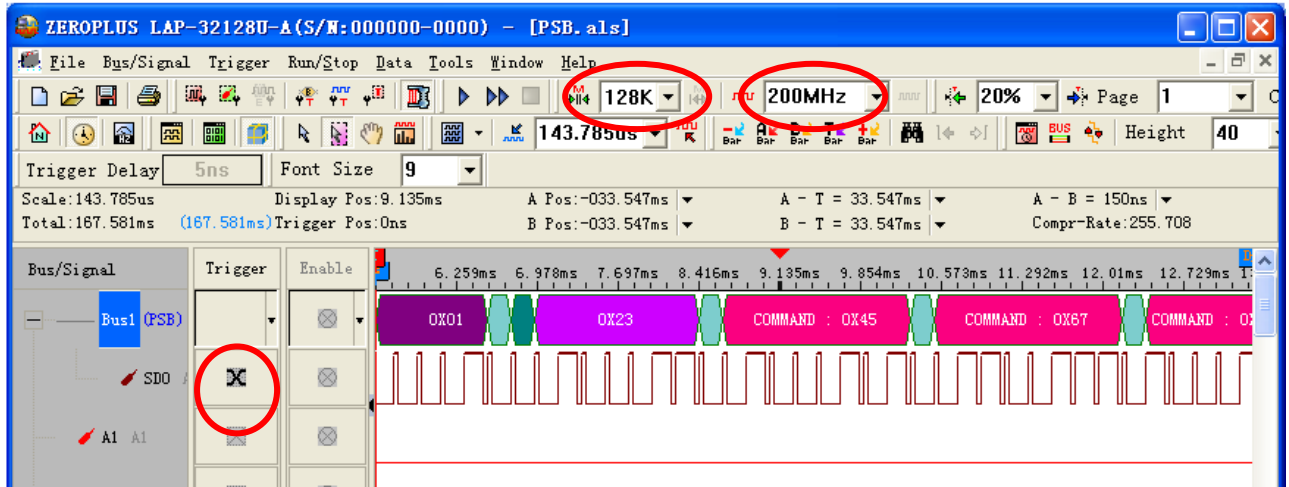


STEP 10. Set the color of the Bus.



STEP 11. Following pictures show the completion of the Bus decoding and the package list.
The Trigger Condition is either edge; the Memory Depth is 128K; the Sampling Frequency is 200MHz.

Bus Decoding



Package List

