



**孕龍科技股份有限公司**  
**ZeroPlus Technology Co., Ltd.**

# SPECIFICATION

**MODEL: B09016-LAP-SCCB-M**

**PART NO:** \_\_\_\_\_

**VERSION:** V1.00

Approver		Check	Design
GM	PM		

Customer Confirm

\* Please fax the file to  
ZeroPlus Technology after  
signing.

2F, NO.123, Jian Ba Rd,  
Chung Ho City, Taipei Hsian, R.O.C.

Tel:+886-2-66202225  
Fax:+886-2-22234362



---

# Content

1	Software Installation .....	3
2	User Interface.....	7
3	Operating Instructions.....	10

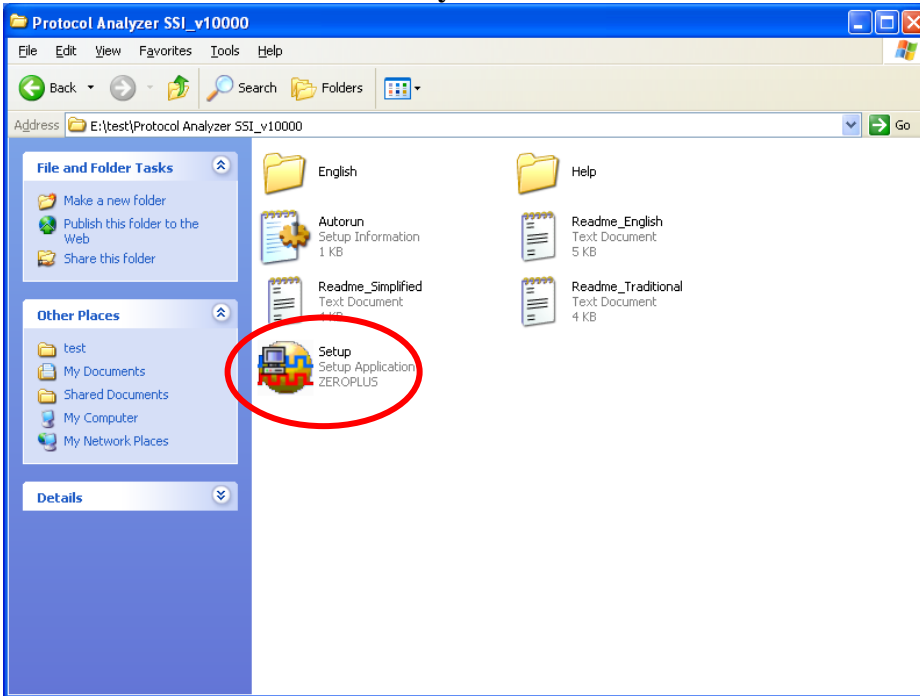


# 1 Software Installation

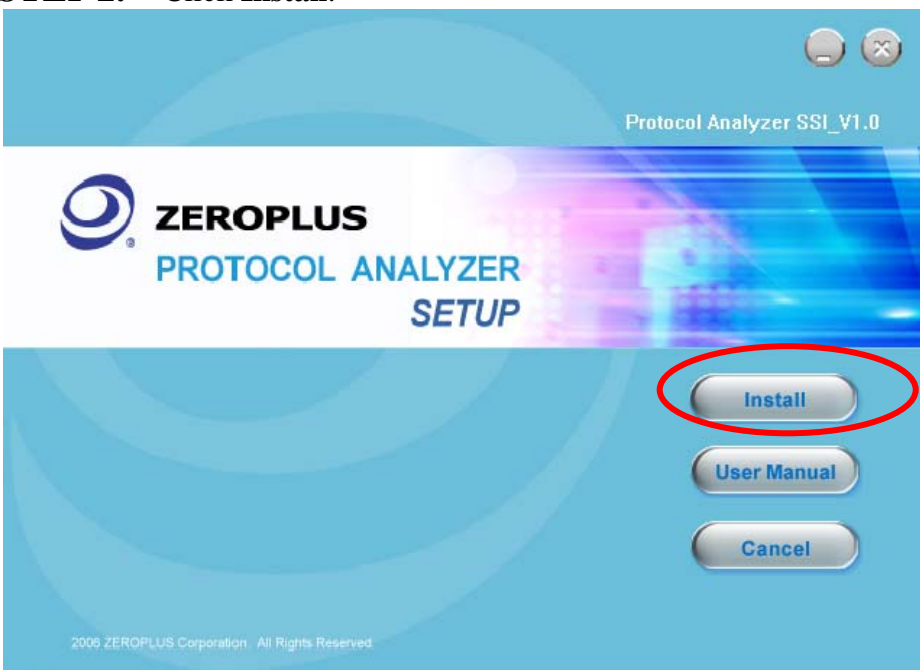
Please install the software as the following steps:

- ※ Remark: 1. The installation steps for all protocol analyzers are the same; you can complete the installation by following procedures. Following is an example on how to install protocol analyzer SSI.
- ※ Remark: 2. We won't have additional notice for you, when there is any modification of the module specification. If there is some unconformity caused by the module version upgrade, users should take the module software as the standard.

## STEP 1. Install Protocol Analyzer Module.

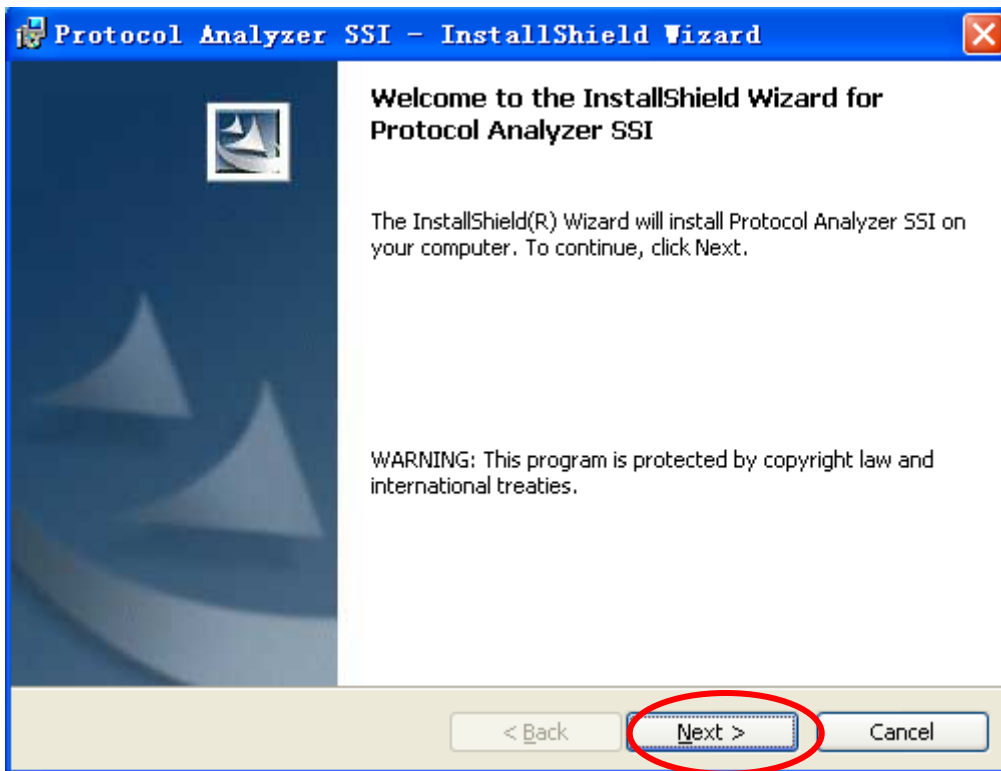


## STEP 2. Click Install.

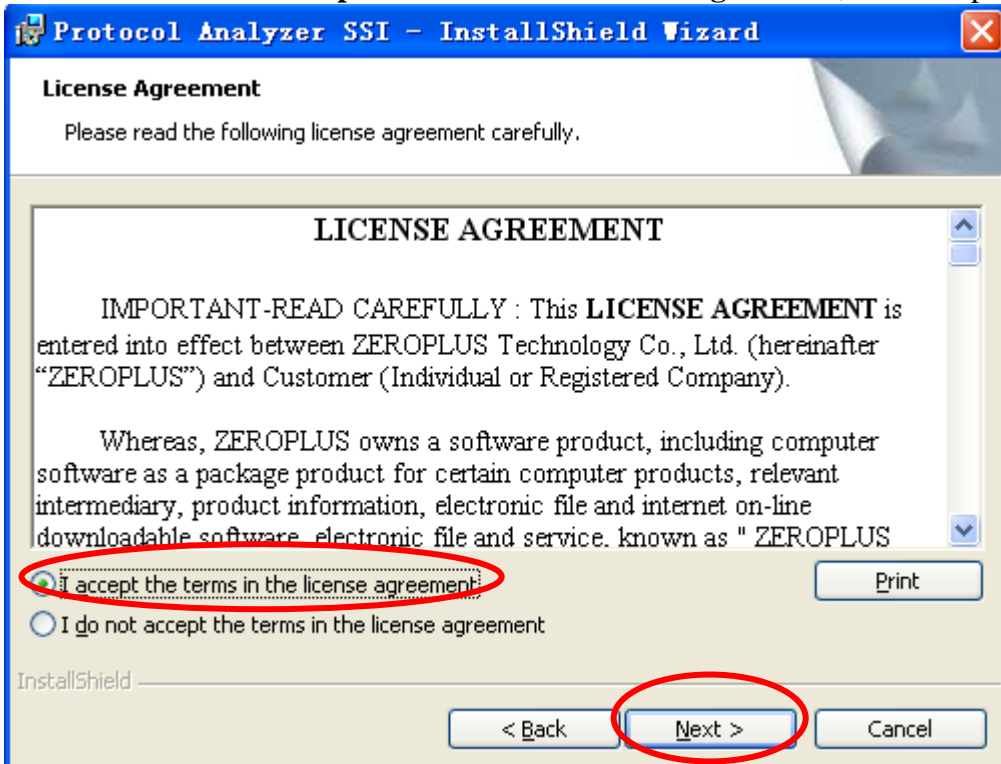




**STEP 3.** Click Next.



**STEP 4.** Select **I accept the terms in the license agreement**, and then press Next.





**STEP 5.** Fill in users' information in the below dialog box and click **Next**.

**Protocol Analyzer SSI - InstallShield Wizard**

**Customer Information**

Please enter your information.

User Name:  
sunshine

Organization:  
zeroplus

Install this application for:

Anyone who uses this computer (all users)

Only for me (sunshine)

InstallShield

< Back   **Next >**   Cancel

**STEP 6.** First, select **Complete** and then click **Next**.

**Protocol Analyzer SSI - InstallShield Wizard**

**Setup Type**

Choose the setup type that best suits your needs.

Please select a setup type.

**Complete**  
All program features will be installed. (Requires the most disk space.)

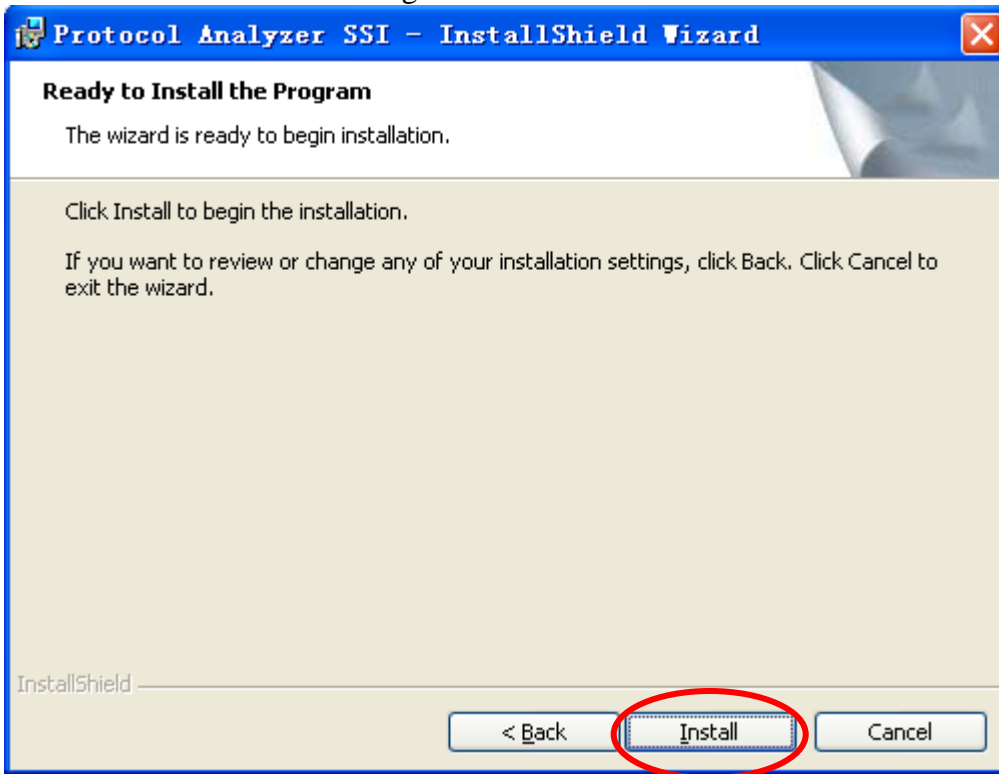
**Custom**  
Choose which program features you want installed and where they will be installed. Recommended for advanced users.

InstallShield

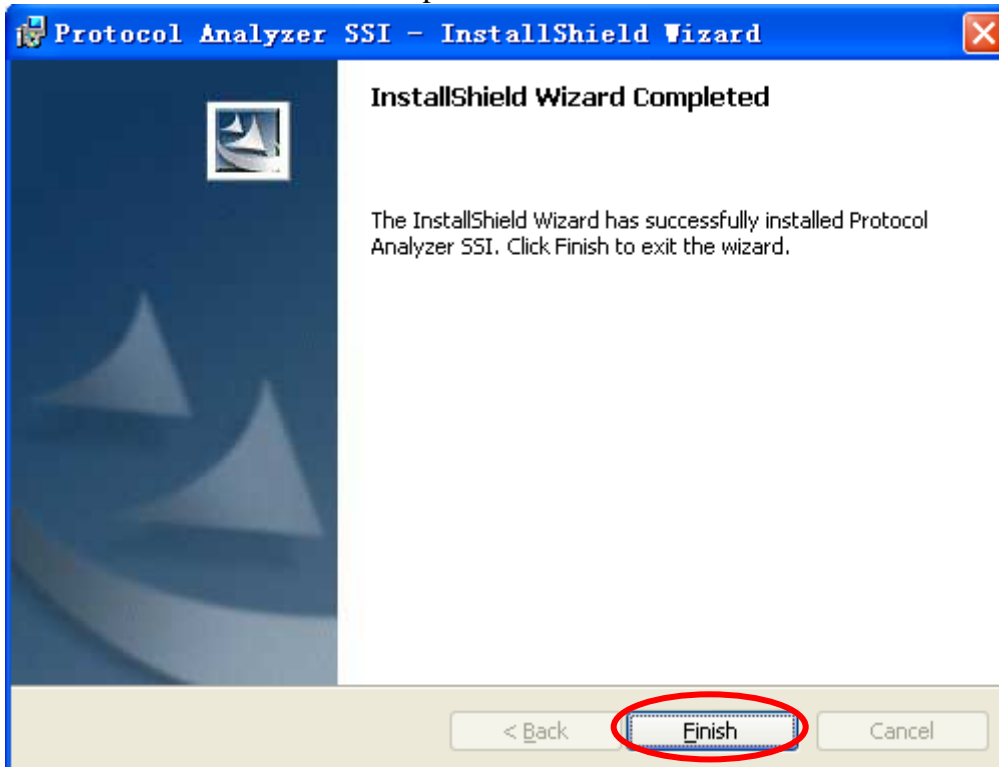
< Back   **Next >**   Cancel



**STEP 7.** Click **Install** to begin the installation.



**STEP 8.** Click **Finish** to complete the installation.

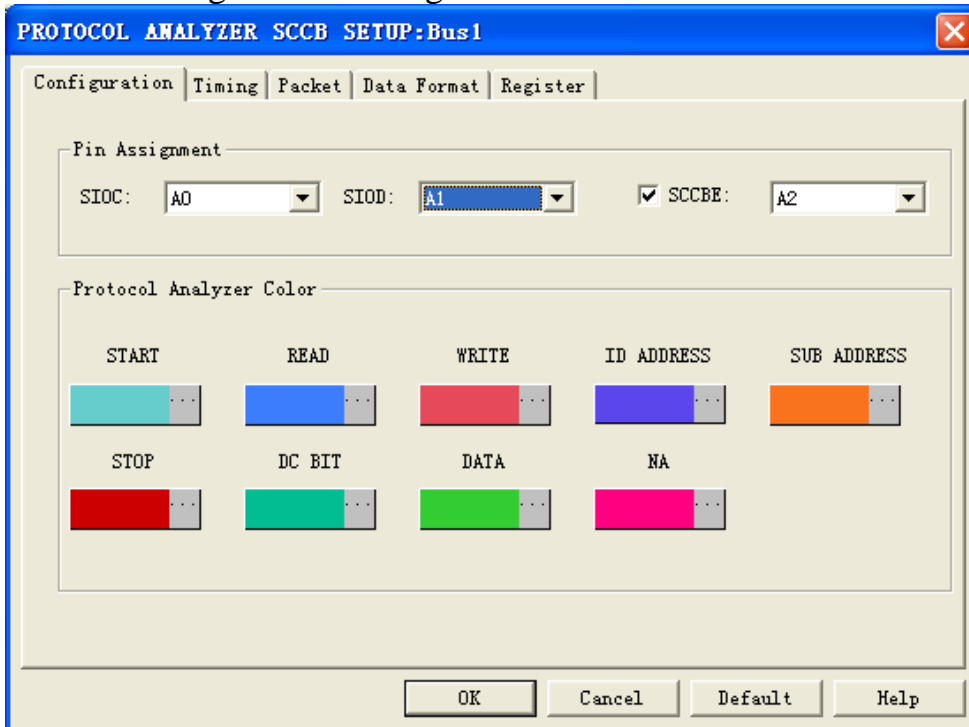




## 2 User Interface

In the configuration, please refer to the below images to select options of setting SCCB module.

### SCCB Configuration Dialog Box



#### Pin Assignment:

**SIOC:** It is the Clock Signal Channel.

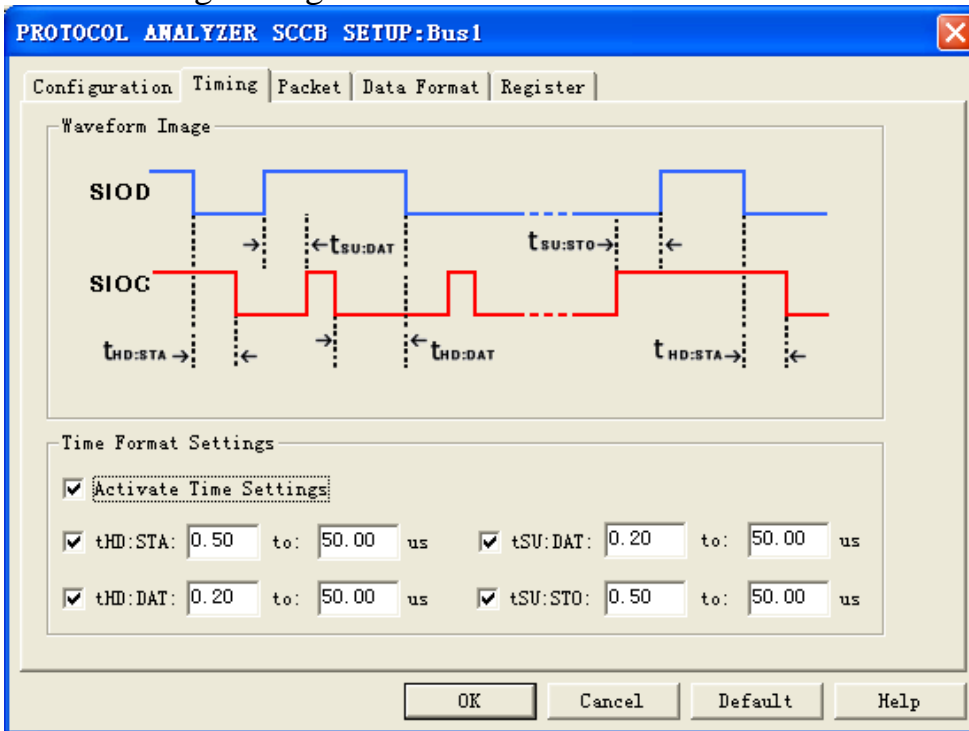
**SIOD:** It is the Data Signal Channel.

**SCCBE:** It is the Chip Select Control Channel. It is effective in the Low Level. The default is to be selected. When not selecting this item, SCCBE, it means that the SCCBE is always in the Low Level.

**Protocol Analyzer Color:** The Protocol Analyzer Color can be varied by users.

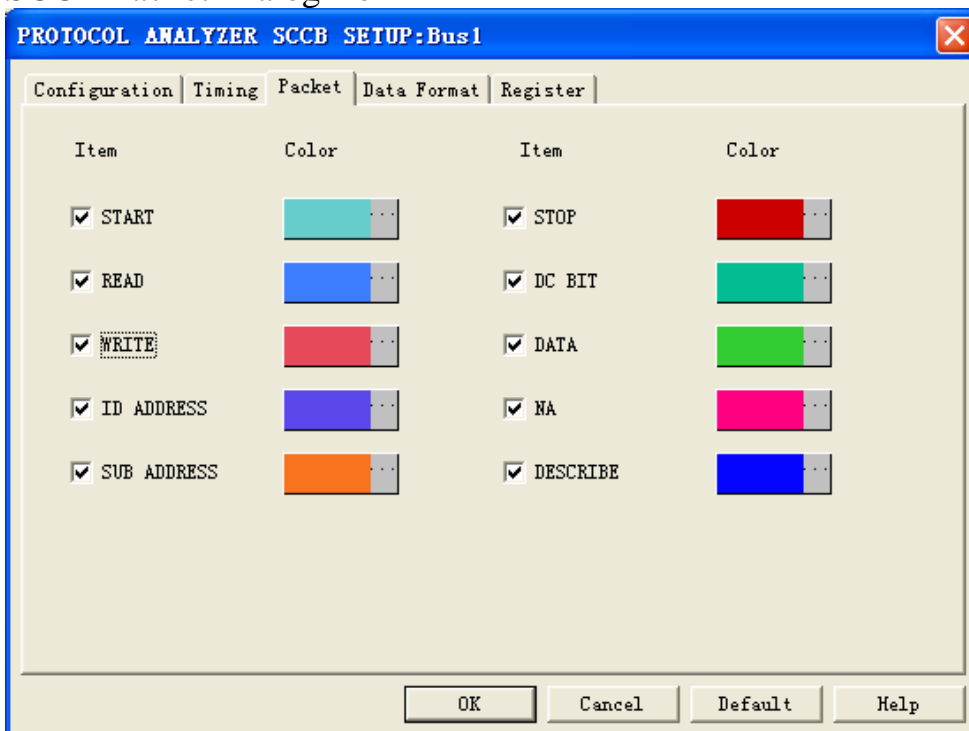


### SCCB Timing Dialog Box



START Time Interval, tHD: STA, is from the Falling Edge of the SIOD to the Falling Edge of the SIOC; END Time Interval, tSU: STO, is from the Rising Edge of the SIOC to the Rising Edge of the SIOD; the Time Sequence of data can be divided into two parts. tSU: DAT is the Time Interval which is from the Rising Edge or Falling Edge of the SIOD to the Rising Edge of the SIOC; tHD: DAT is the Time Interval which is from the Falling Edge of the SIOC to the Rising Edge or Falling Edge of the SIOD.

### SCCB Packet Dialog Box

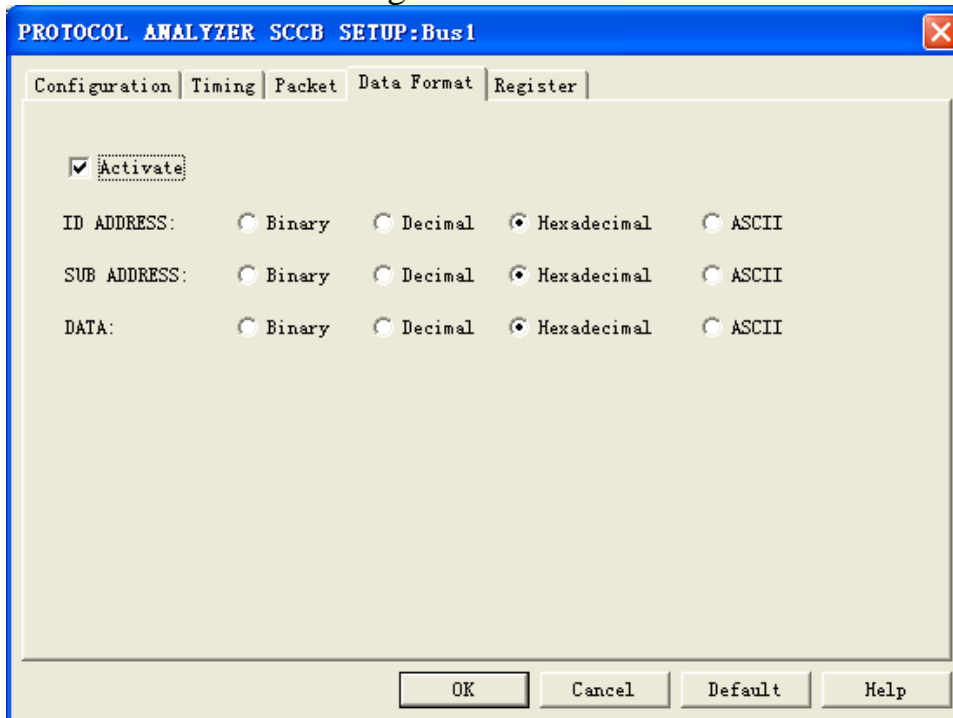


In the packet part, users can set the items and colors as users' requirements.



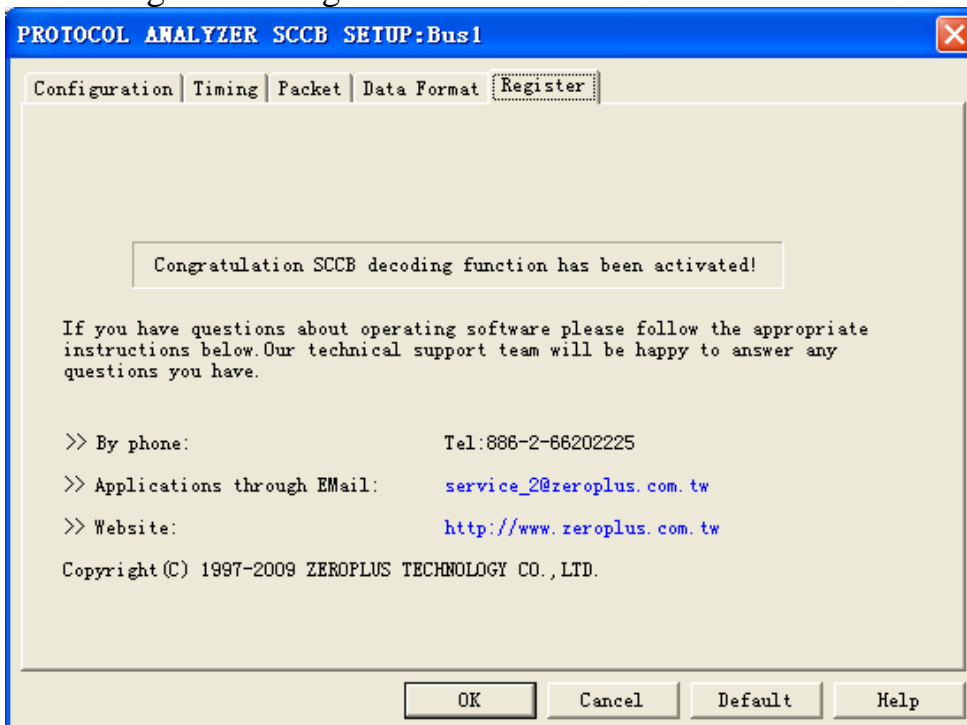


## SCCB Data Format Dialog Box



Users can set the Data Format of the ID ADDRESS, SUB ADDRESS and DATA as their requirements. When selecting the option, Activate, the data formats are decided by the settings in the Protocol Analyzer; when not selecting the option, Activate, the data formats are decided by the settings in the main program.

## SCCB Register Dialog Box

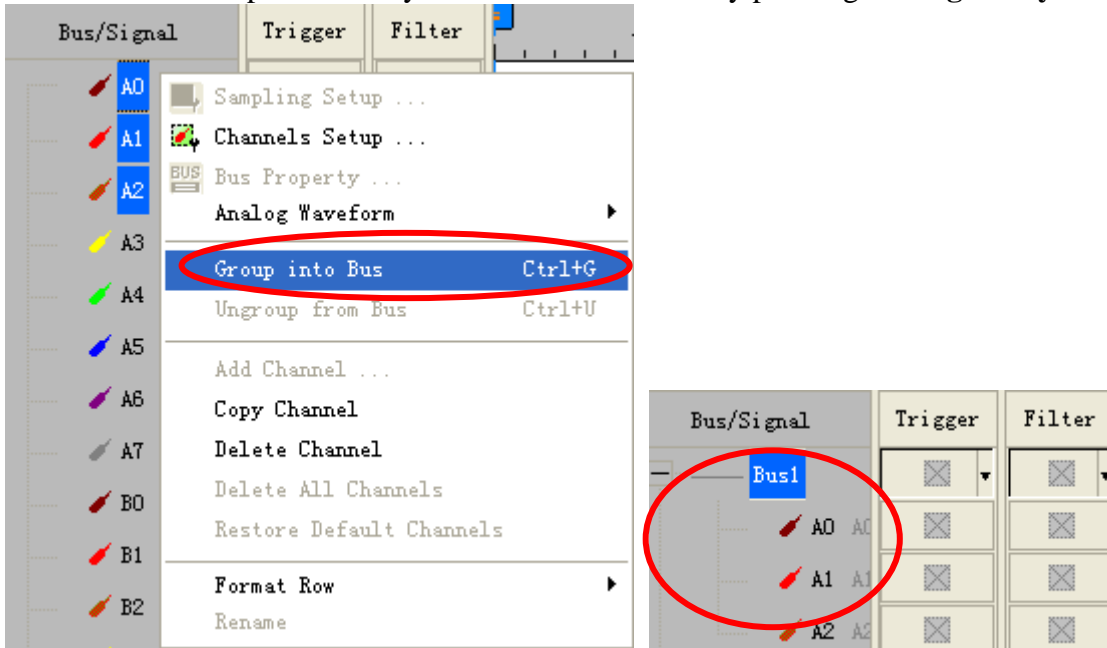


There is written ZeroPlus company information. If you have any questions about software operations, you can contact ZeroPlus by Telephone or Email.

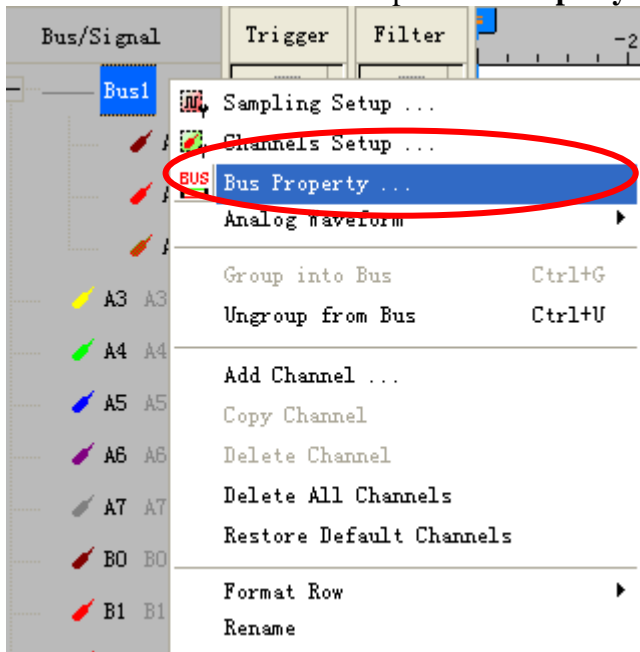


### 3 Operating Instructions

**STEP 1.** Group the unanalyzed channel into **Bus1** by pressing the **Right Key** on the mouse.

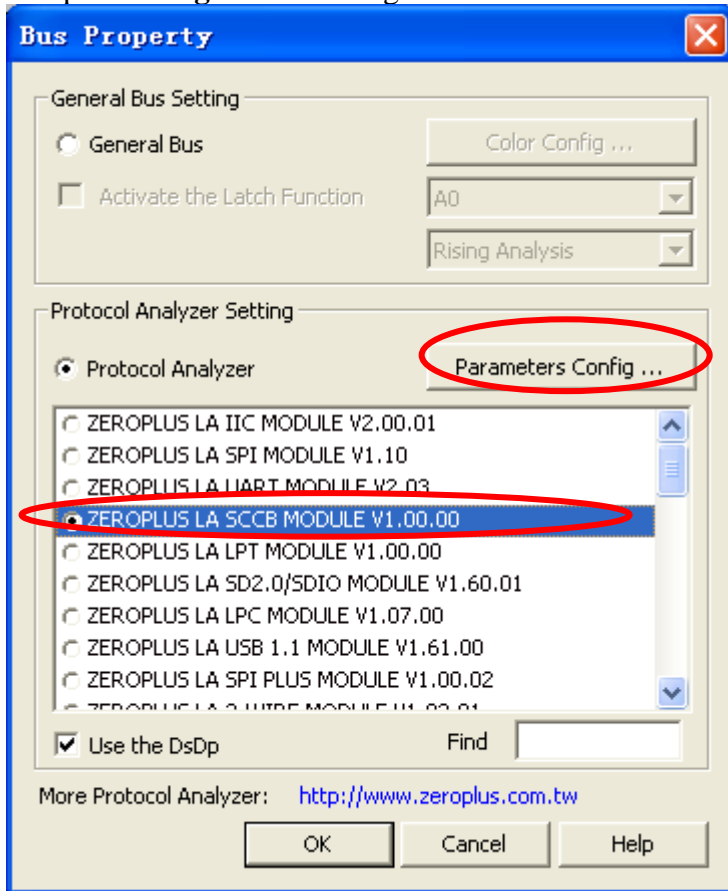


**STEP 2.** Select **Bus1**, and press **Right Key** on the mouse to list the menu, then press **Bus Property** or **Bus** bar on the toolbar to open **Bus Property** dialog box.

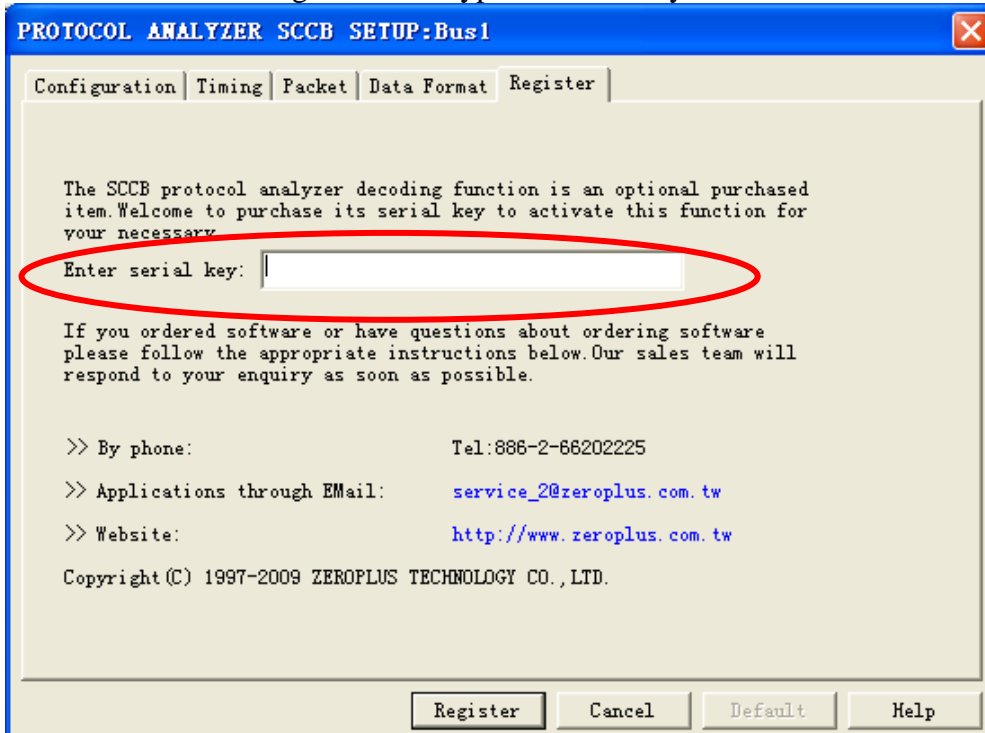




**STEP 3.** For Protocol Analyzer SCCB Parameters Configuration, select Protocol Analyzer, and then choose **ZEROPLUS LA SCCB MODULE V1.00.00**. Next click **Parameters Configuration** to open **Configuration** dialog box.

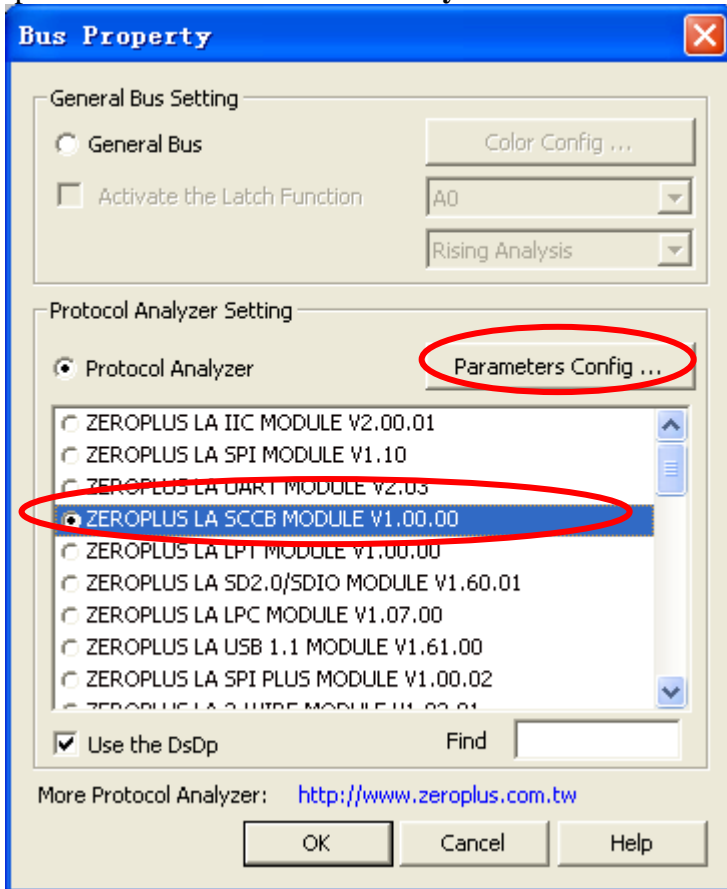


**STEP 4.** Press Register tab to type the serial key number of SCCB. Then, press **Register**.

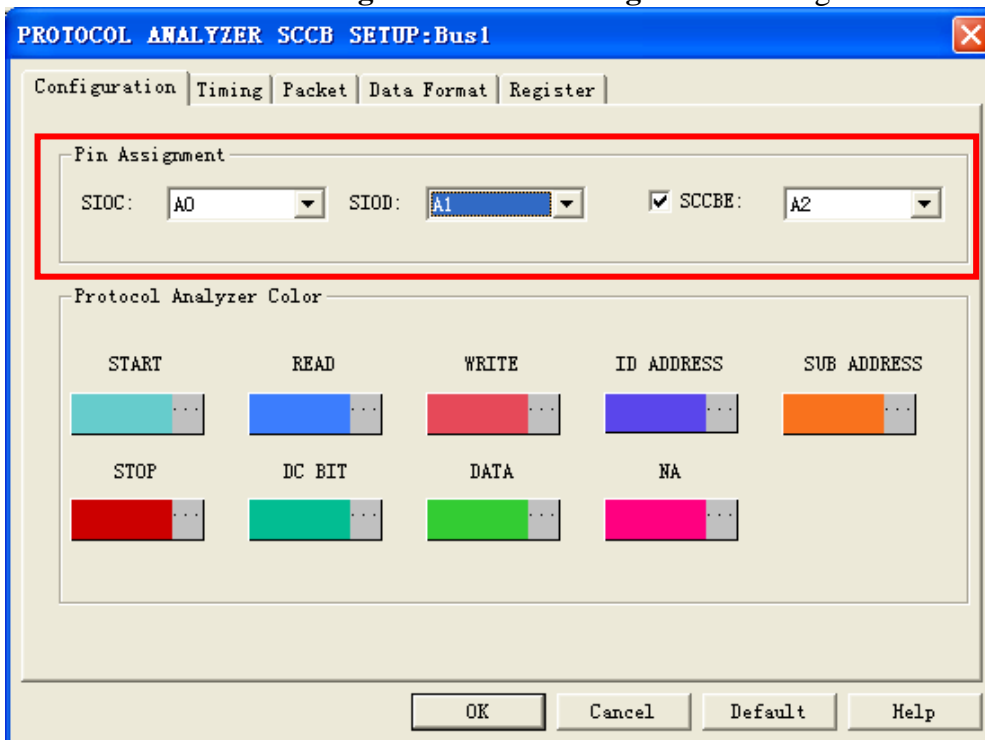




**STEP 5.** Click **Parameters Configuration** again, and open the Configuration dialog box to set the parameters for the **Protocol Analyzer SCCB**.

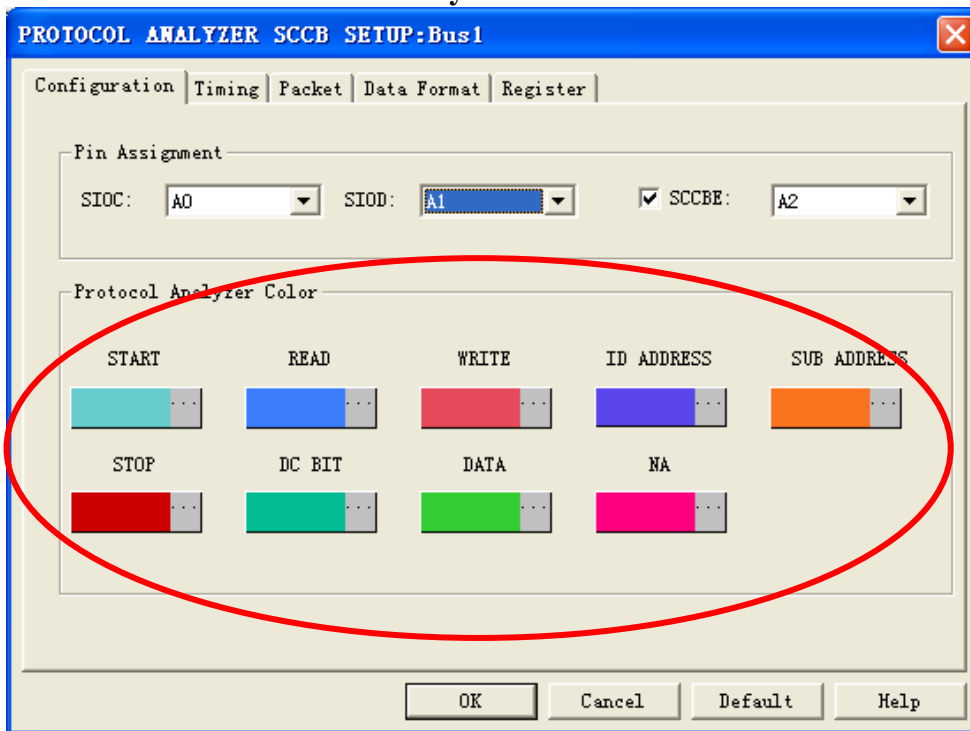


**STEP 6.** Set the **Pin Assignment** in the **Configuration** dialog box.



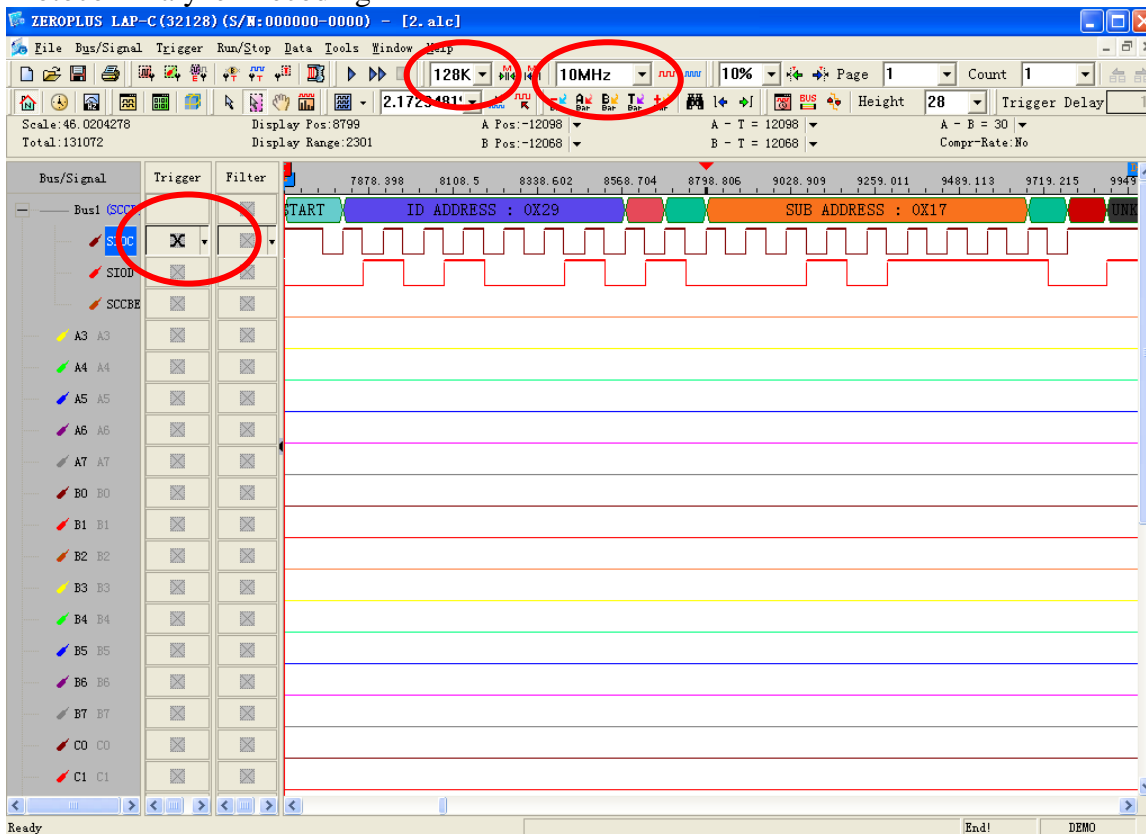


### STEP 7. Set the Protocol Analyzer Color.



**STEP 8.** Following pictures show the completion of the protocol analyzer decoding and the packet list. The trigger condition is set as Either Edge; the memory depth is 128K; the sampling frequency is 10MHZ.

### Protocol Analyzer Decoding





### Packet List

