



**孕龍科技股份有限公司**  
**ZeroPlus Technology Co., Ltd.**

# SPECIFICATION

**MODEL: SD 2.0/SDIO Specification**

**PART NO : B08020**

**VERSION : V1.01**

Approver		Check	Design
GM	PM		

Customer Confirm

\* After signature you fax to zeroplus company , please .



---

# Content

1. Software Installation.....	3
2. User Interface .....	7
3. Operating Instructions .....	8

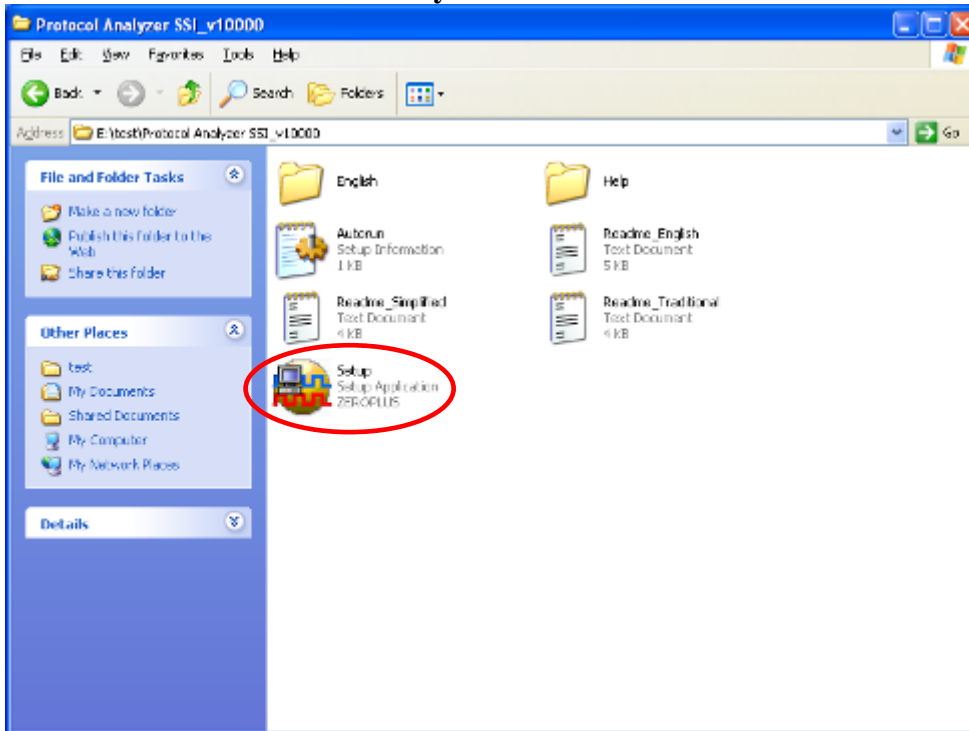
## 1. Software Installation

Please follow below steps to install the software:

※ Remark: 1. The installation steps for all protocol analyzers are the same; you can complete the installation as following procedures. The following is an example to install protocol analyzer SSI.

※ Remark: 2. We won't have additional notice for you, when there is any modification of the module specification. If there is some unconformity caused by the module version upgrade, users should refer to the module software as the standard.

### STEP 1. Install Protocol Analyzer Module.

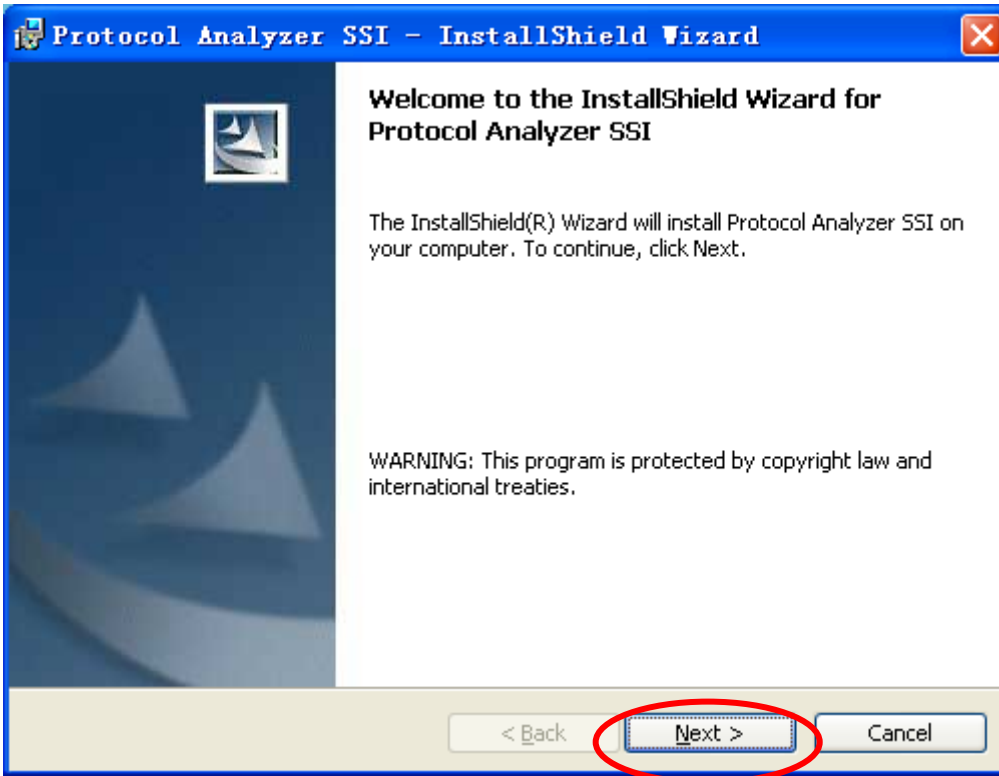


### STEP 2. Click Install.

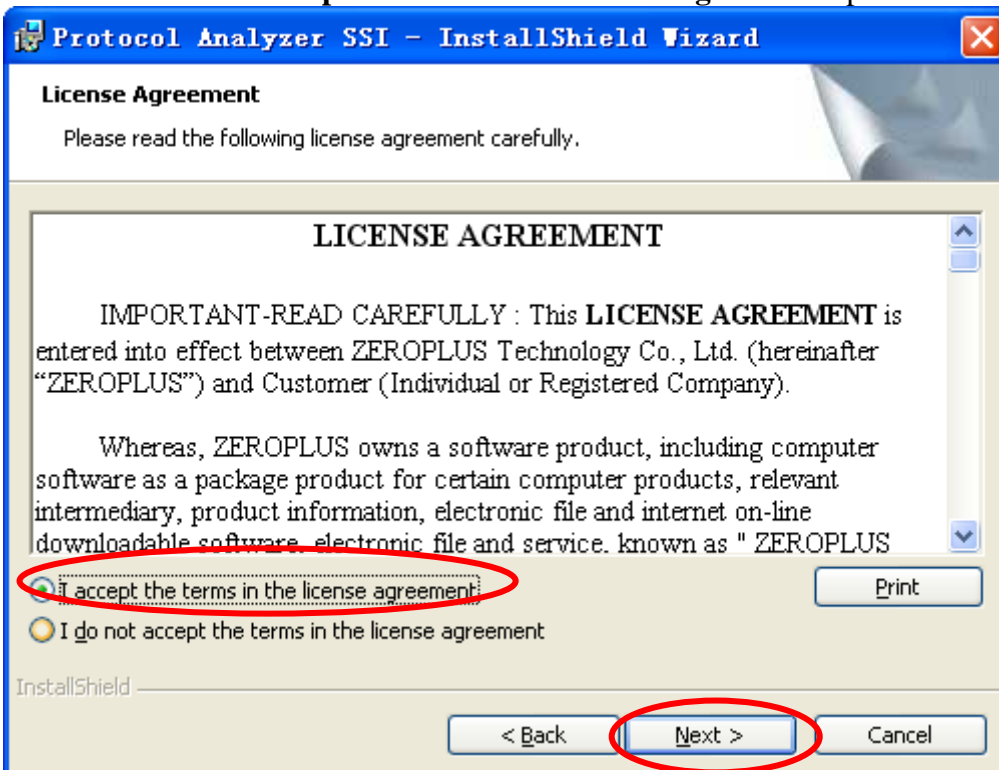




**STEP 3.** Click Next.

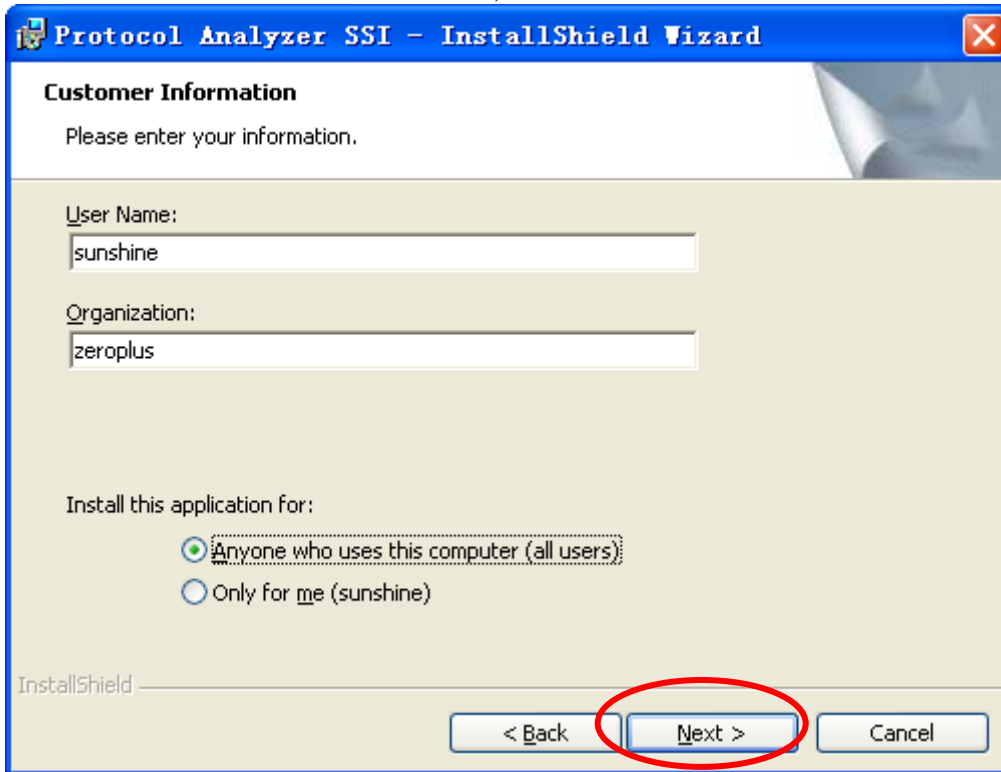


**STEP 4.** Select I accept the terms in the license agreement option and then click Next.

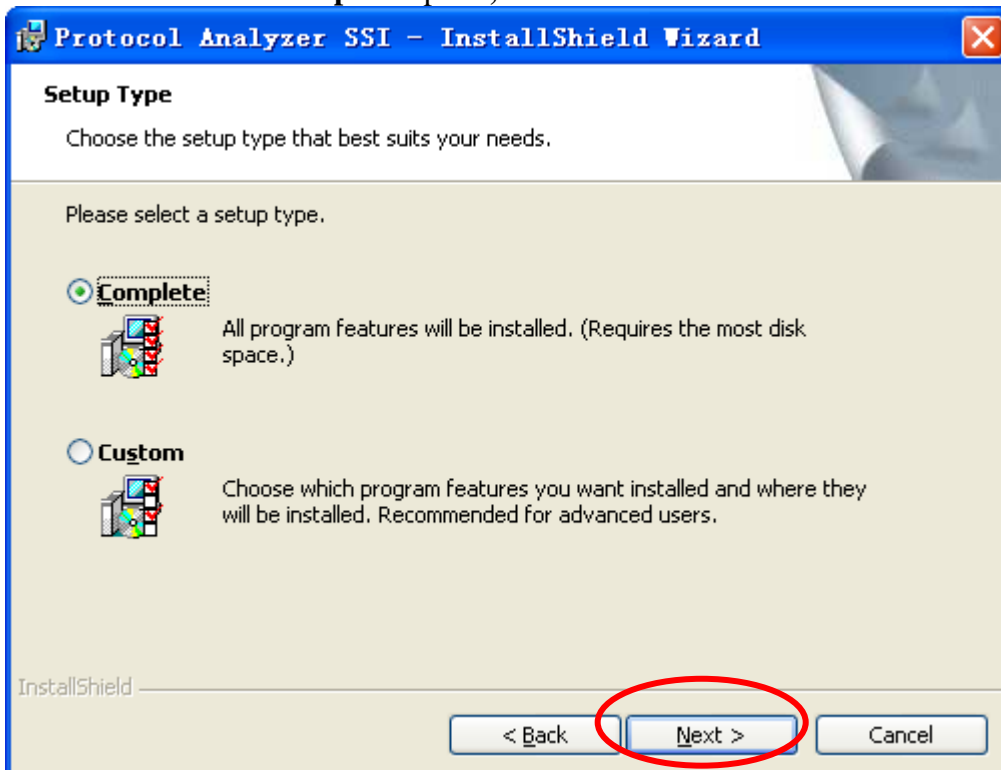




**STEP 5.** Fill in users' information, and then click **Next**.

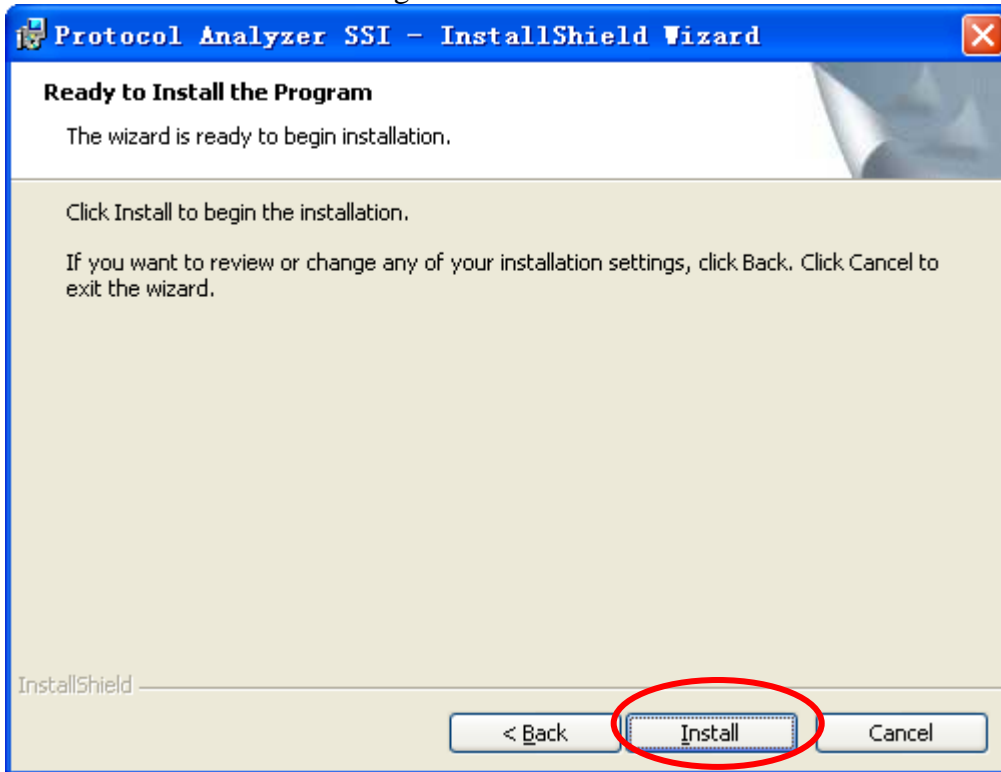


**STEP 6.** Select **Complete** option, and then click **Next**.

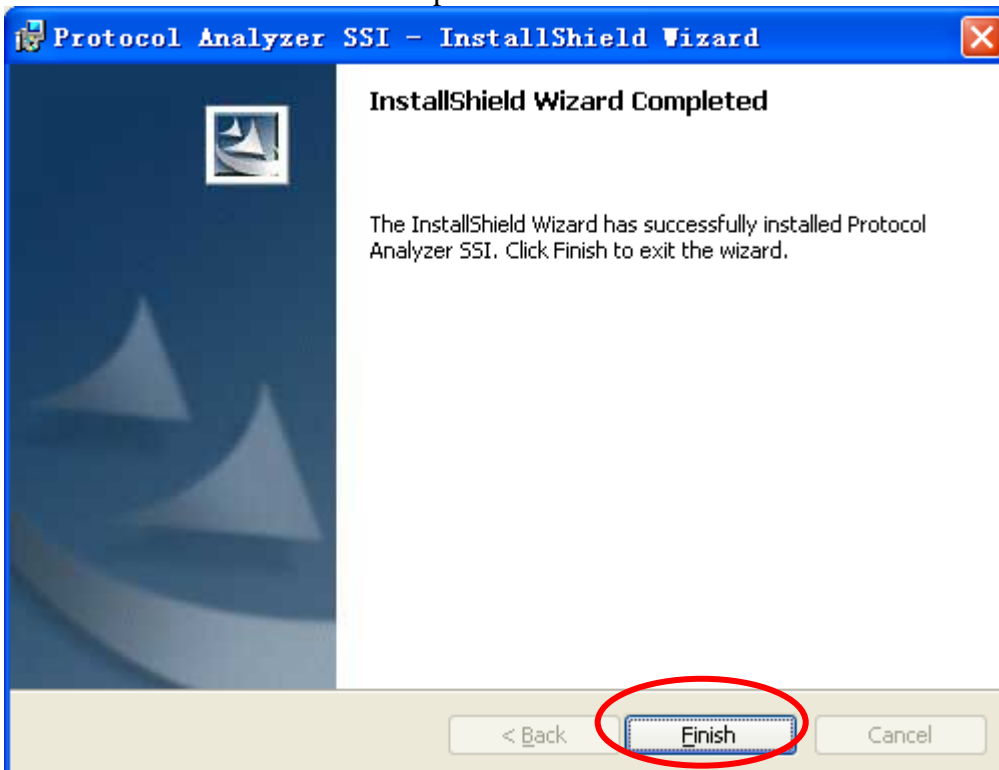




**STEP 7.** Click **Install** to begin the installation.



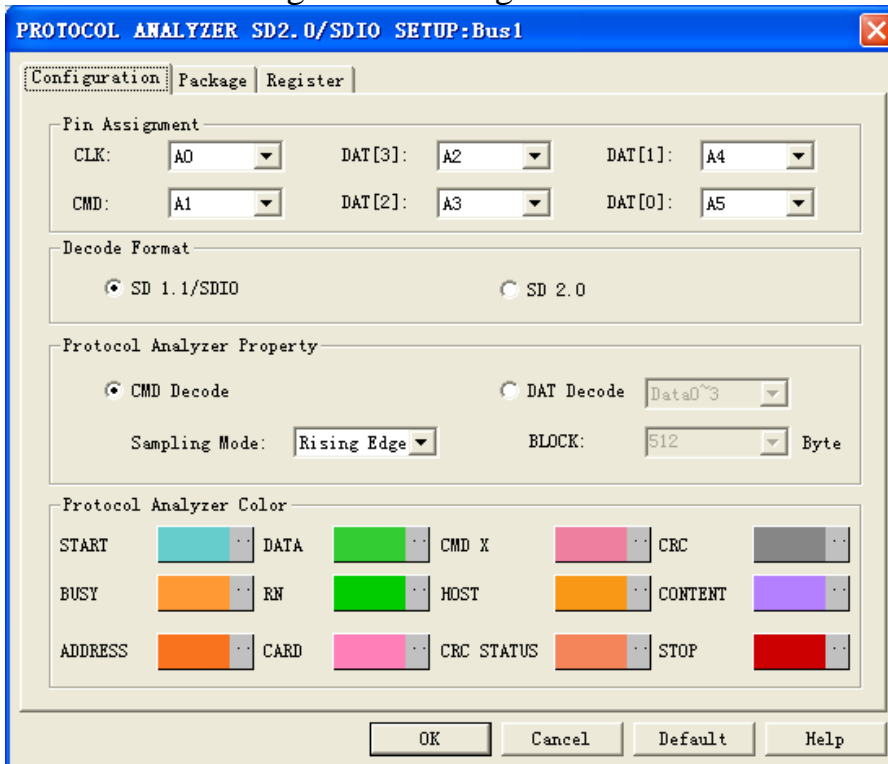
**STEP 8.** Click **Finish** to complete the installation.



## 2. User Interface

Please refer to the below images to select options of setting **SD2.0/SDIO MODULE**.

### SD2.0/SDIO Configuration dialog box



#### **SD2.0/SDIO Pin Assignment:**

CLK is the frequency channel; CMD is the command channel; DAT 0~3 are the data channels.

#### **Decode Format:**

There are two decoding formats for selection, SD 1.1/SDIO and SD 2.0.

#### **Protocol Analyzer Property:**

CMD Decode (It only decodes command and response)

DAT Decode (It only decodes transmission data). There are two modes for selection, Data0 and Data0~3.

#### **BLOCK Setting:**

Set the number of the BLOCK. Users can select the 512 byte, 1024 byte and 2048 byte from the dropdown menu, or users can enter a number as their requirements within the range 1 to 32767 Byte.

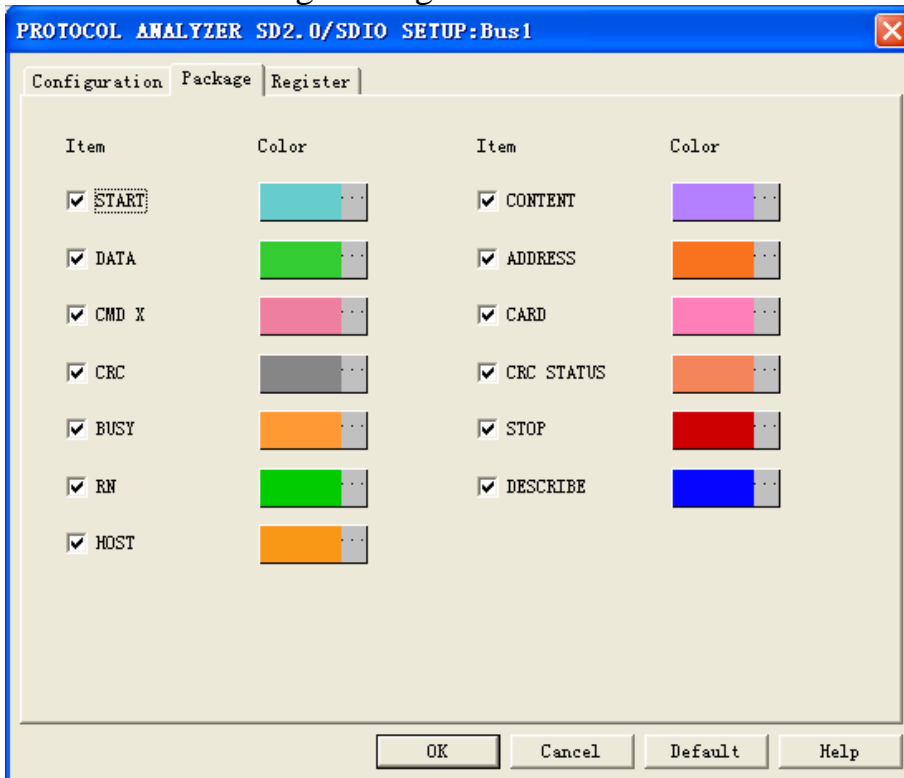
#### **Sampling Mode:**

Users can set CLK sampling mode as Rising Edge or Falling Edge.

#### **Protocol Analyzer Color:**

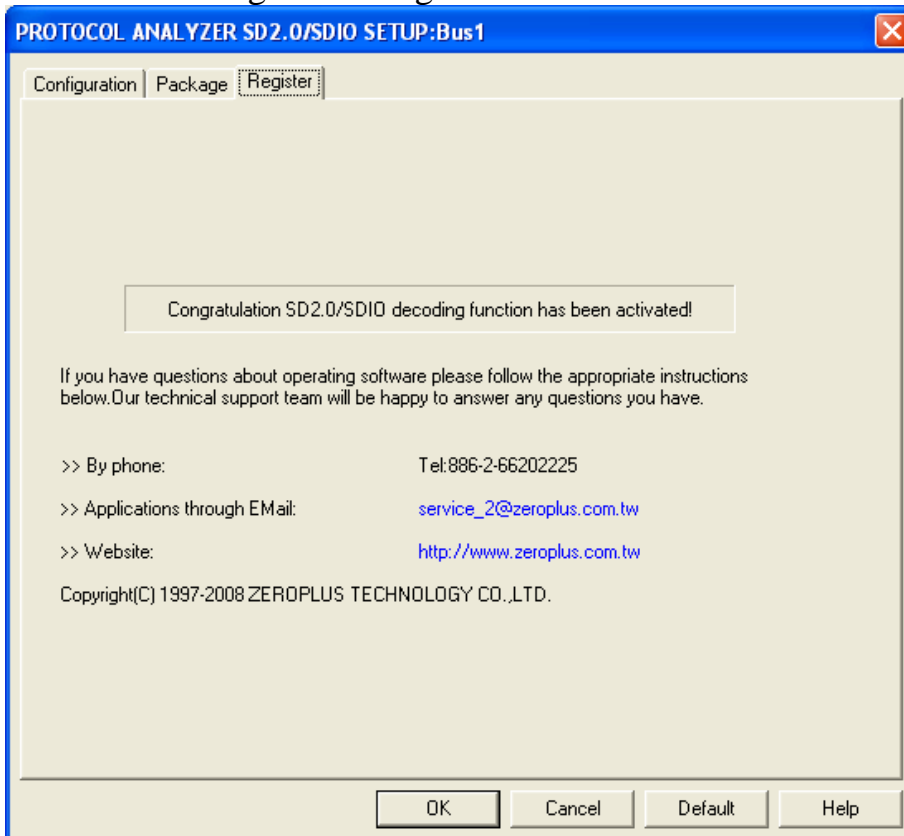
The protocol analyzer color can be varied by users.

## SD2.0/SDIO Package dialog box



In the package dialog box, users can vary the color of items.

## SD2.0/SDIO Register dialog box

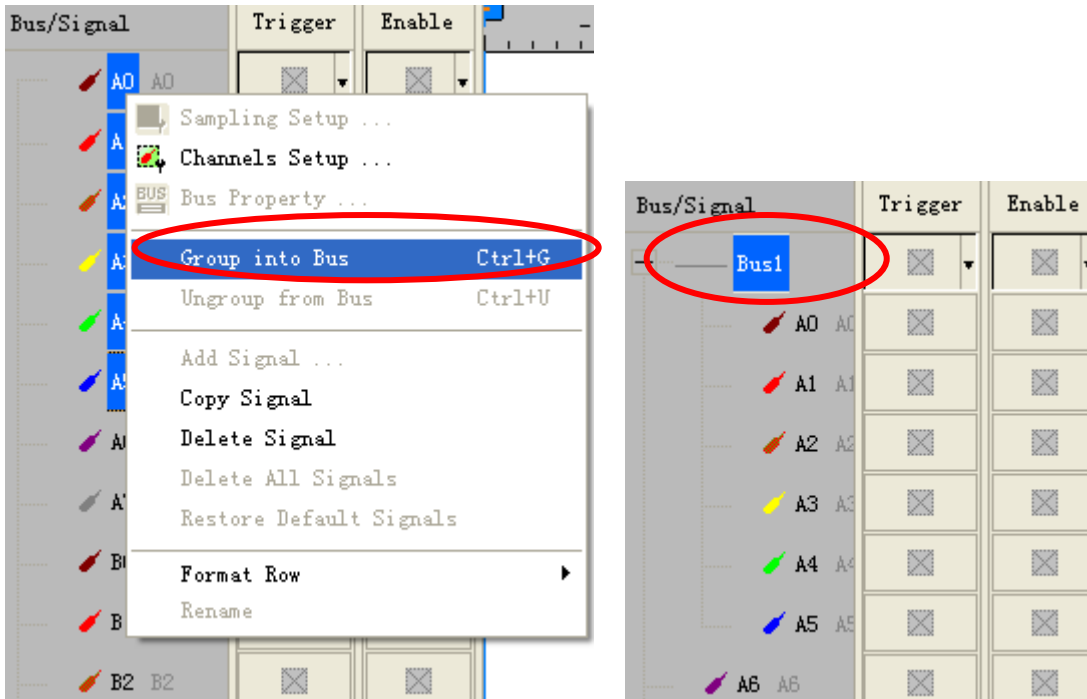


There is ZeroPlus company information. If you have any questions about software operations, you can contact ZeroPlus by Telephone or Email.

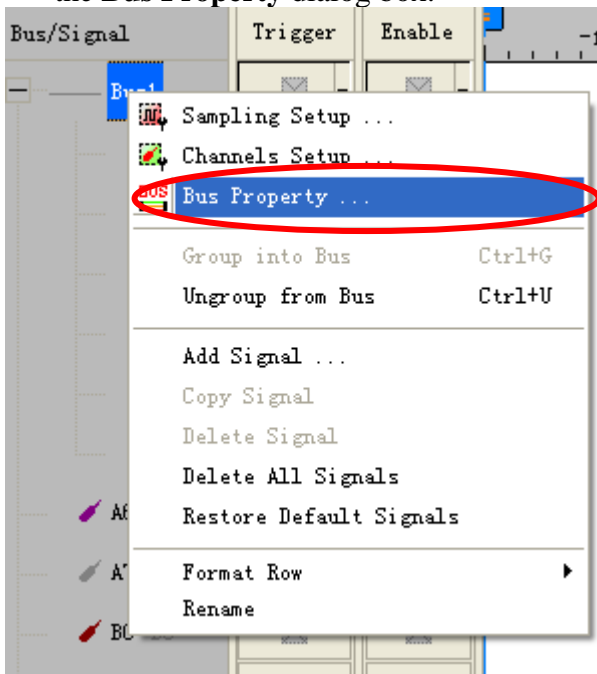


### 3. Operating Instructions

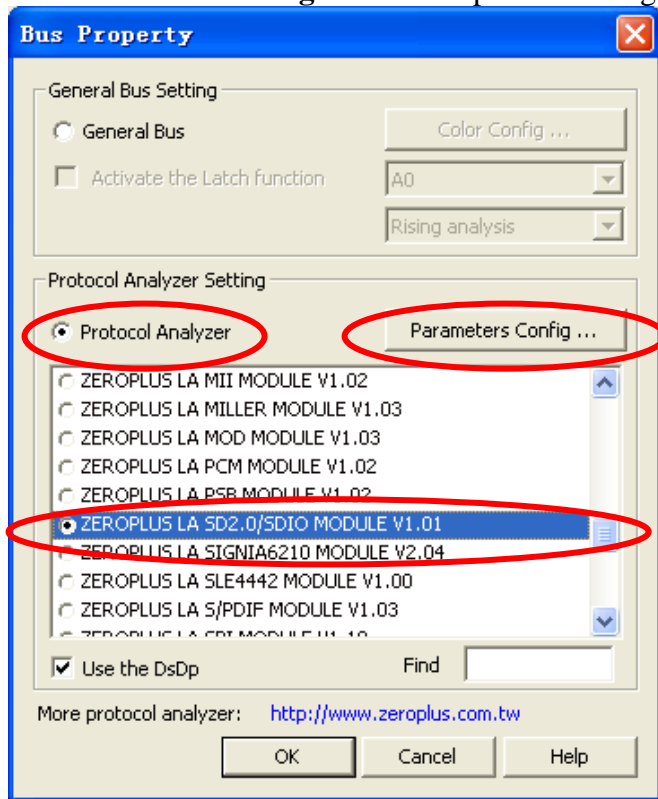
**STEP 1.** Group the unanalyzed channels into **Bus1** by pressing the **Right Key** on the mouse.



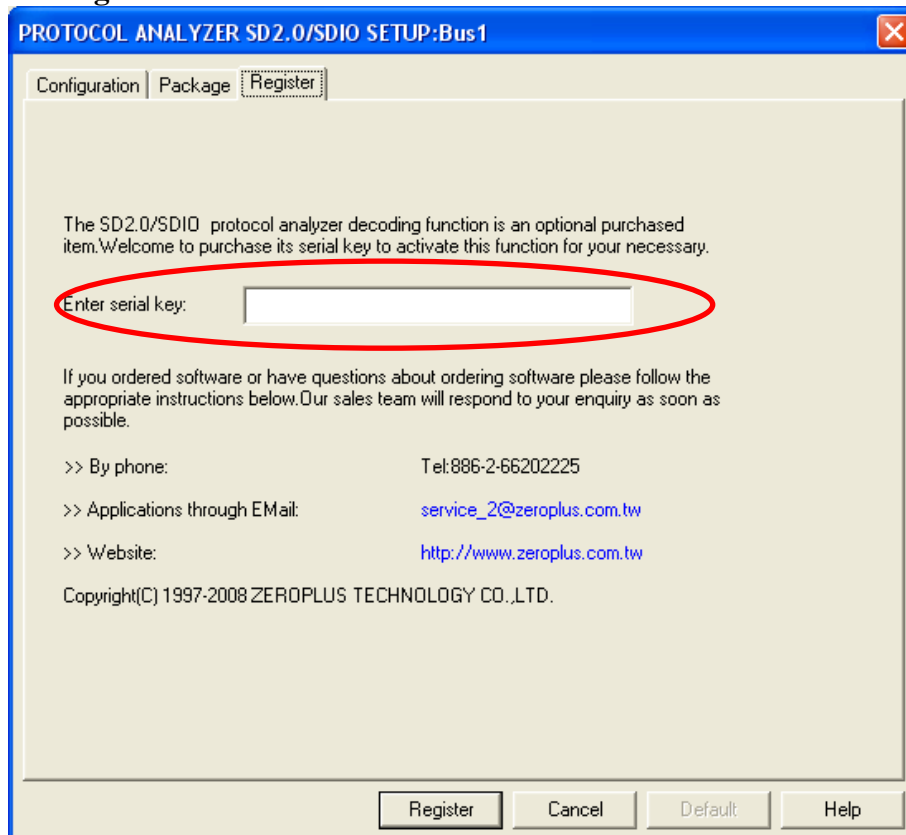
**STEP 2.** Select **Bus1**, then, press the **Right Key** on the mouse, then click **Bus Property** to open the **Bus Property** dialog box.



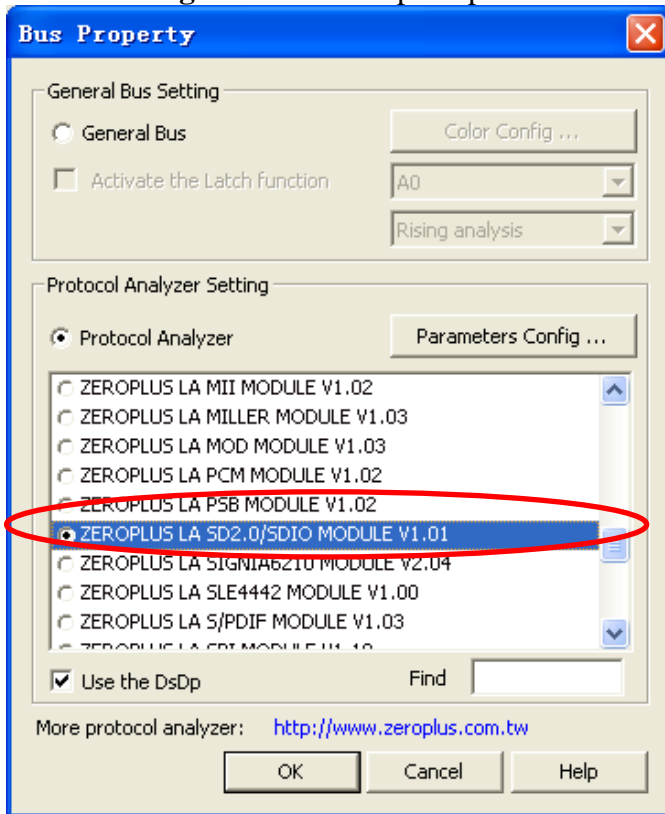
**STEP 3.** For Protocol Analyzer SD2.0/SDIO Parameters Configuration, select Protocol Analyzer, then choose **ZEROPLUS LA SD2.0/SDIO MODULE V1.01**. Next click **Parameters Configuration** to open the configuration dialog box.



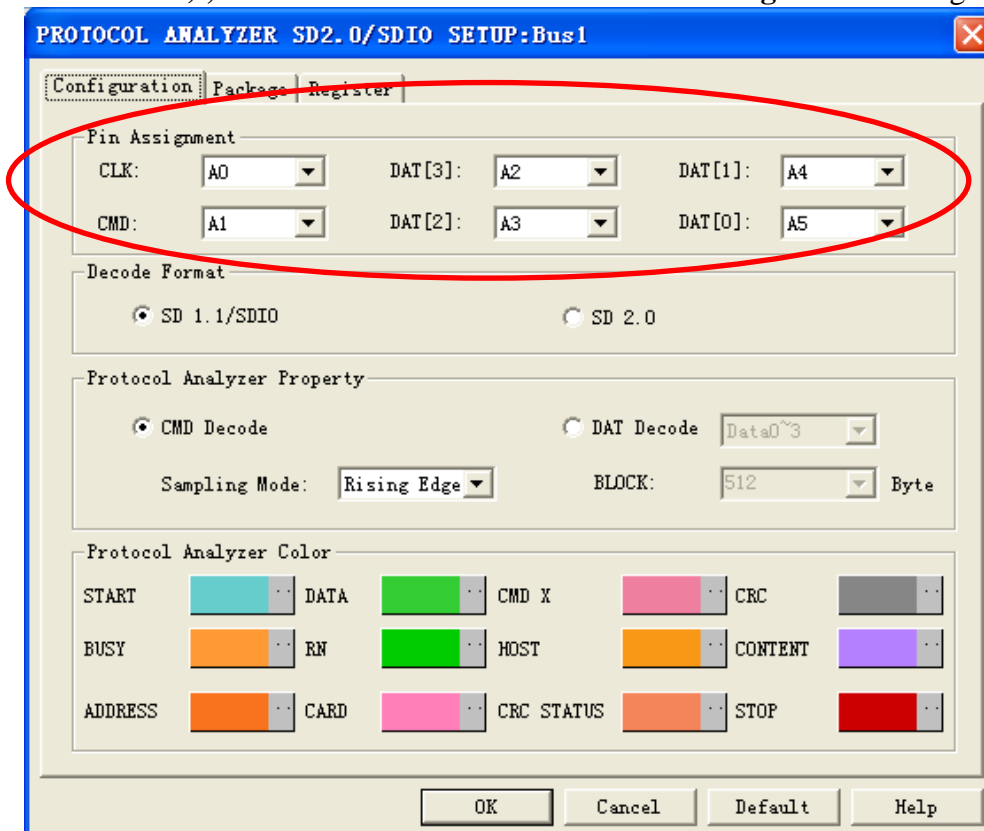
**STEP 4.** Press **Register** tab to type the serial key number of SD2.0/SDIO Module. Then press **Register**.



**STEP 5.** After completing Register, it turns to **Bus Property** dialogue box. Click **Parameters Configuration** to set up the parameters of the protocol analyzer.

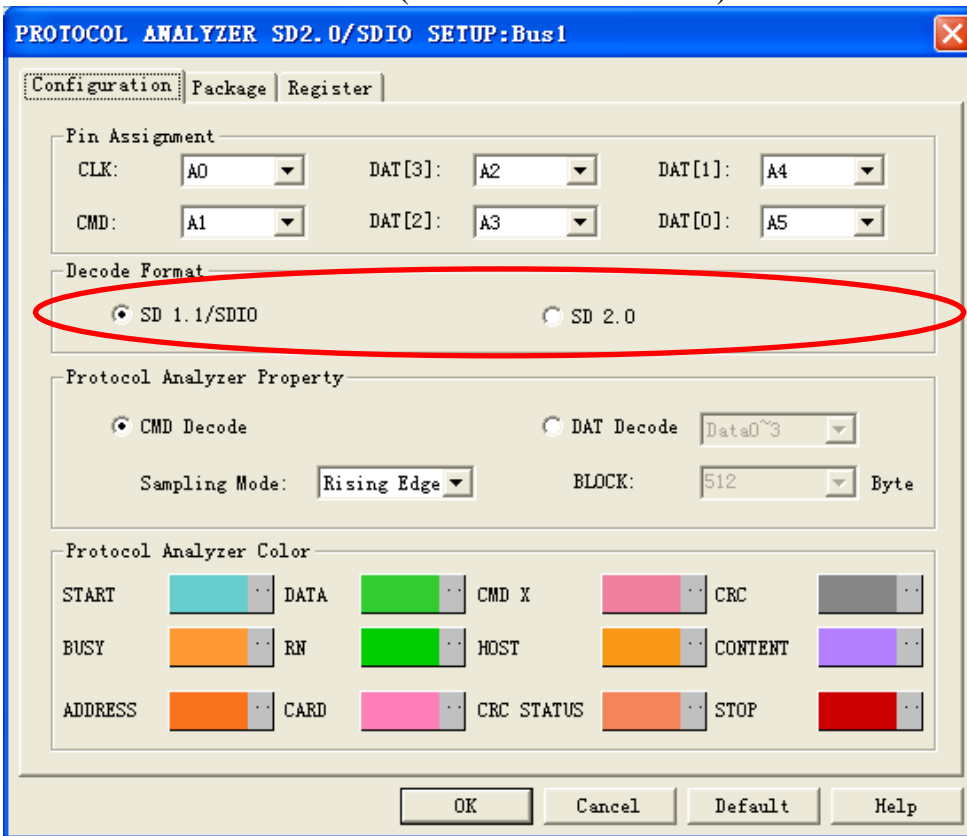


**STEP 6.** Set **SD2.0/SDIO Pin Assignment**, **CLK(Frequency Channel)**, **CMD(Command Channel)**, **DAT 0-3 (Data Channels)** in the **Configuration** dialog box.

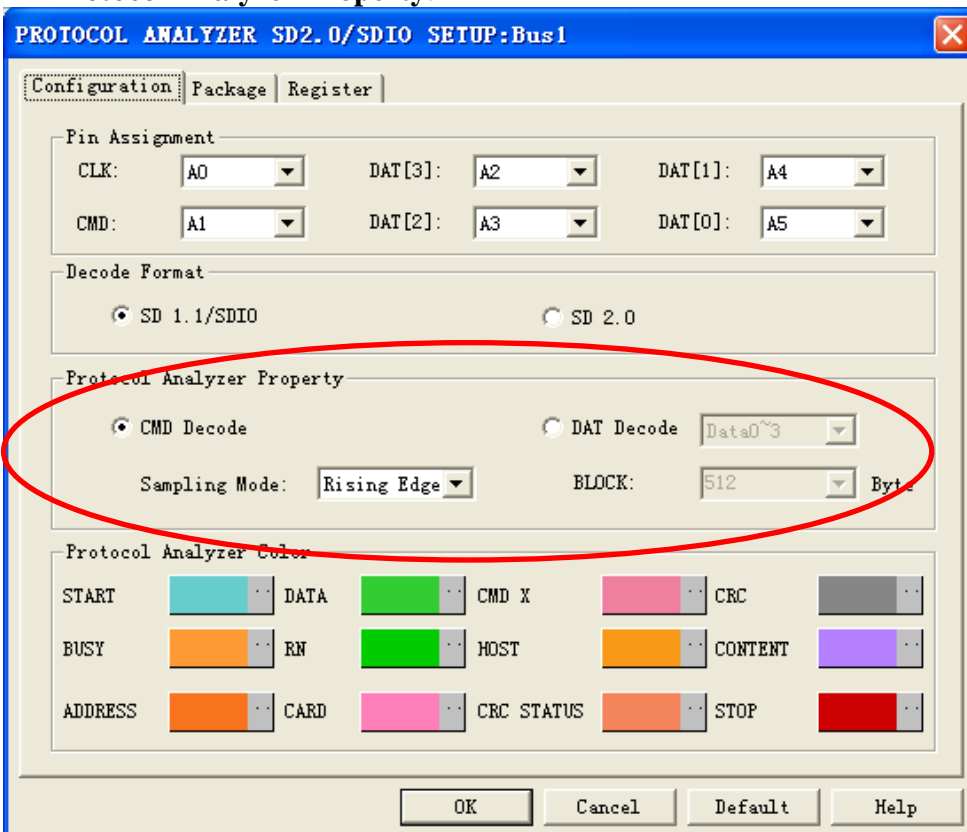




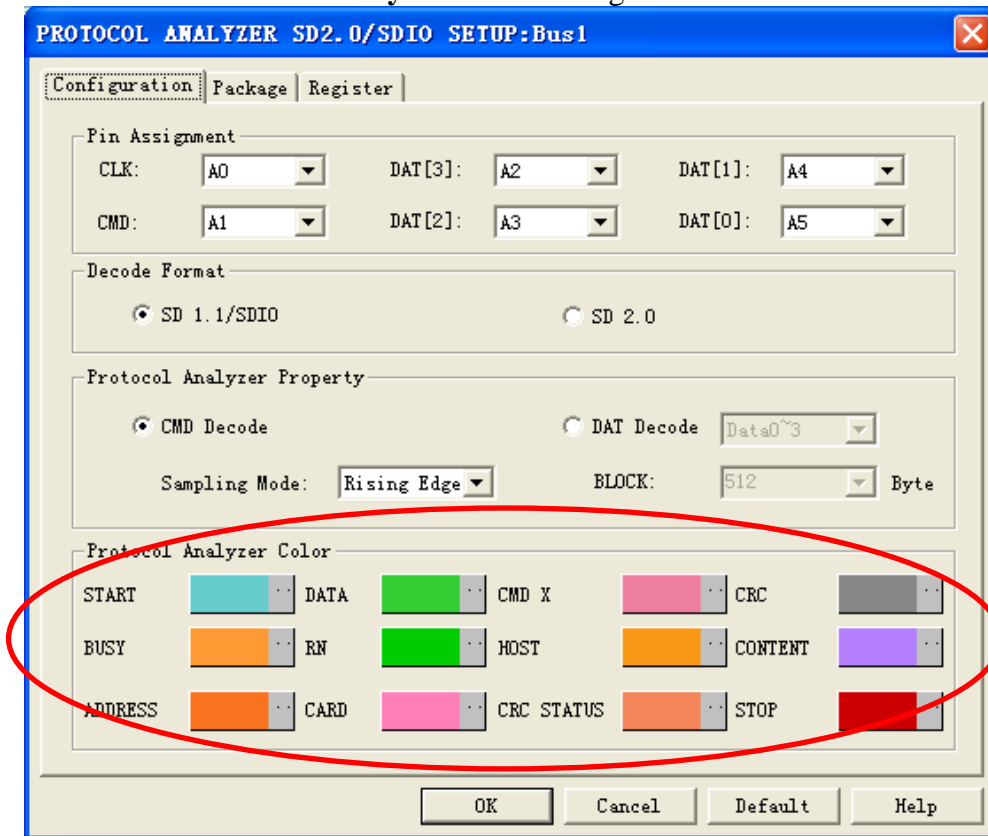
### STEP 7. Decode Format (SD1.1/SDIO and SD2.0).



### STEP 8. Set CMD Decode or DAT Decode, BLOCK number and CLK Sampling Mode in Protocol Analyzer Property.

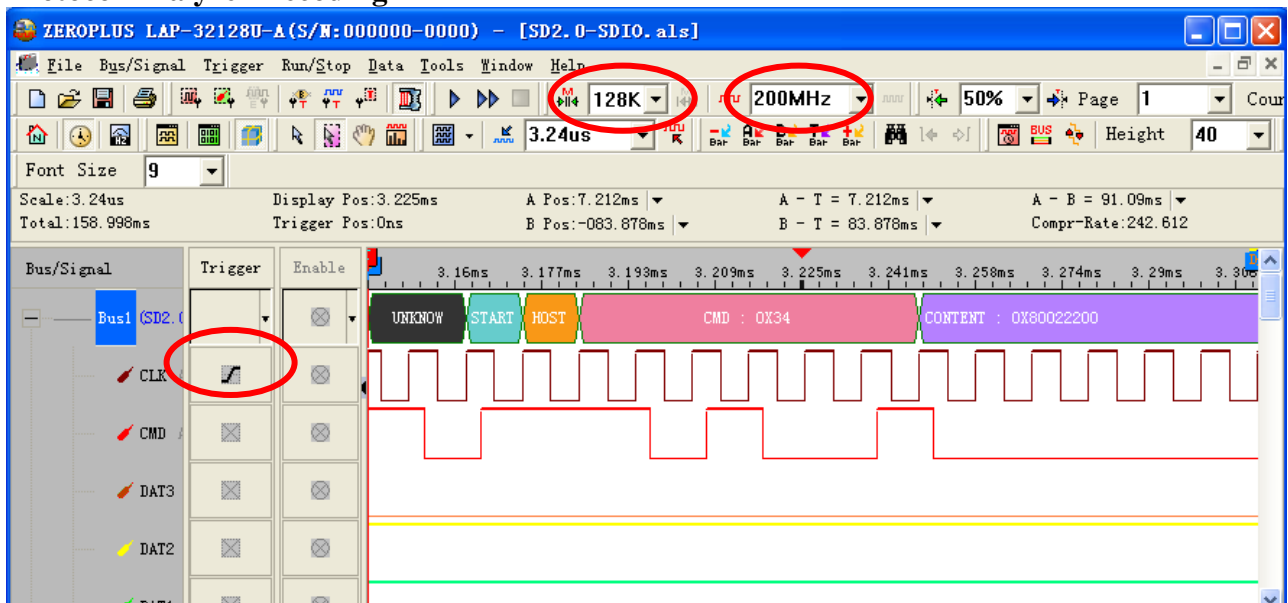


### STEP 9. Protocol Analyzer Color setting.



**STEP 10.** Following pictures show the completion of the protocol analyzer decoding and the package list. The trigger condition is set as Rising Edge; the memory depth is 128K; the sampling frequency is 200MHz.

### Protocol Analyzer Decoding





## Package List

