



**孕龍科技股份有限公司**  
**Zeroplus Technology Co., Ltd.**

# SPECIFICATION

**MODEL: SDQ Specification**

**PART NO : B08035**

---

**VERSION : V1.00**

---

Approver		Check	Design
GM	PM		

**Customer Confirm**

\* After signature you fax to  
zeroplus company , please .



---

# Content

<b>1</b>	<b>Software Installation .....</b>	<b>3</b>
<b>2</b>	<b>User Interface.....</b>	<b>7</b>
<b>3</b>	<b>Operating Instructions.....</b>	<b>9</b>

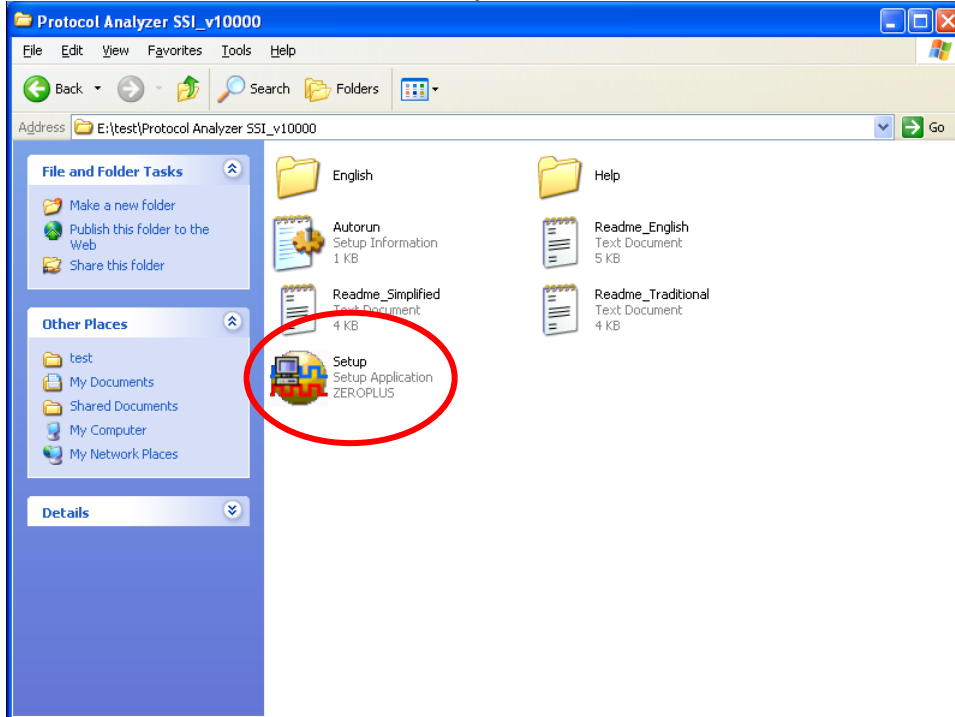


# 1 Software Installation

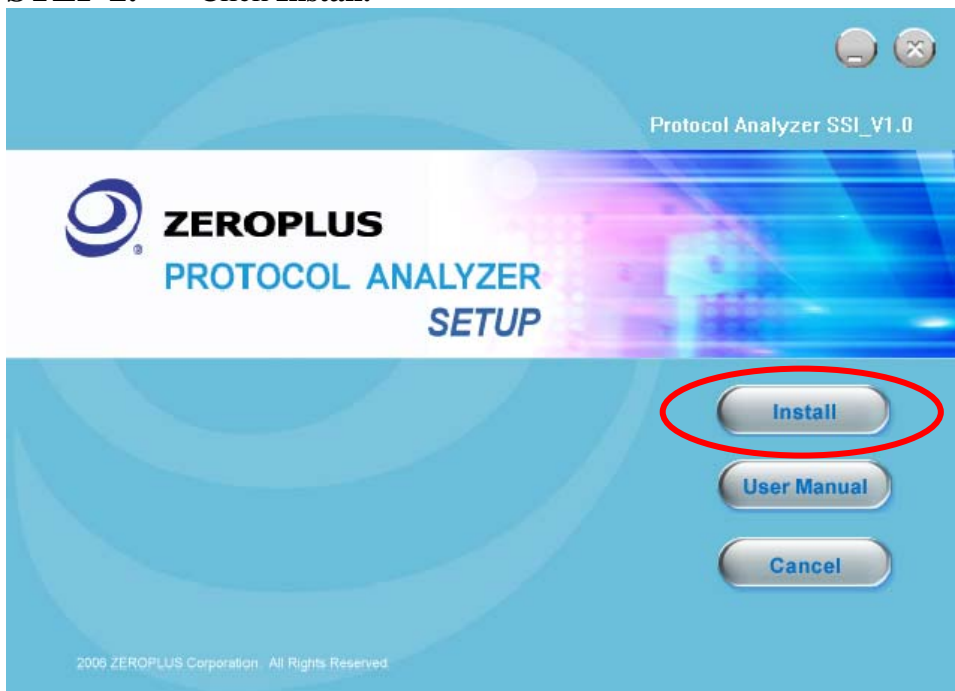
Please install the software as the following steps:

- ※ Remark: 1. The installation steps for all protocol analyzers are the same; you can complete the installation by following procedures. Following is an example on how to install protocol analyzer SSI.
- ※ Remark: 2. We won't have additional notice for you, when there is any modification of the module specification. If there is some unconformity caused by the module version upgrade, users should take the module software as the standard.

## STEP 1. Install Protocol Analyzer Module.

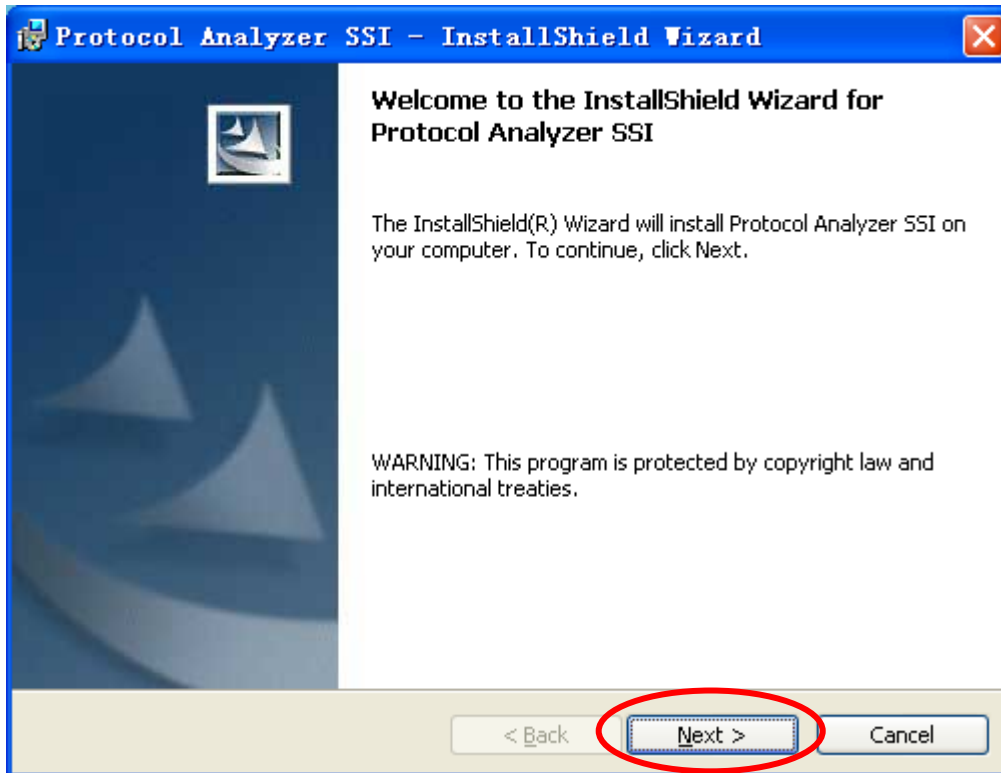


## STEP 2. Click Install.

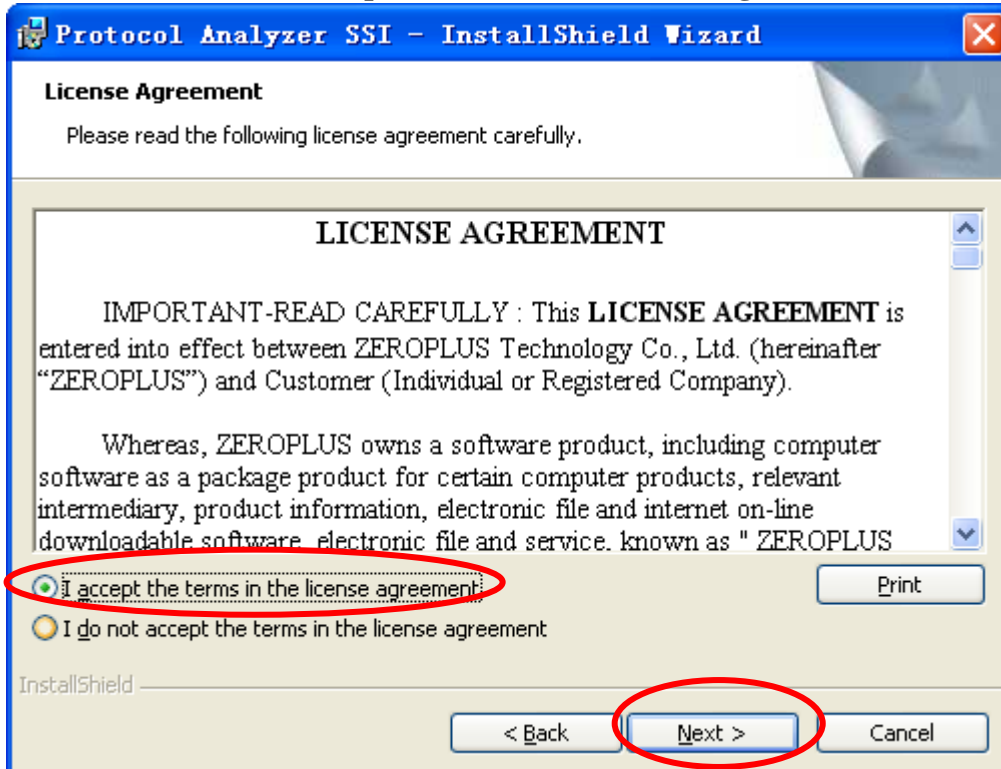




**STEP 3.** Click Next.

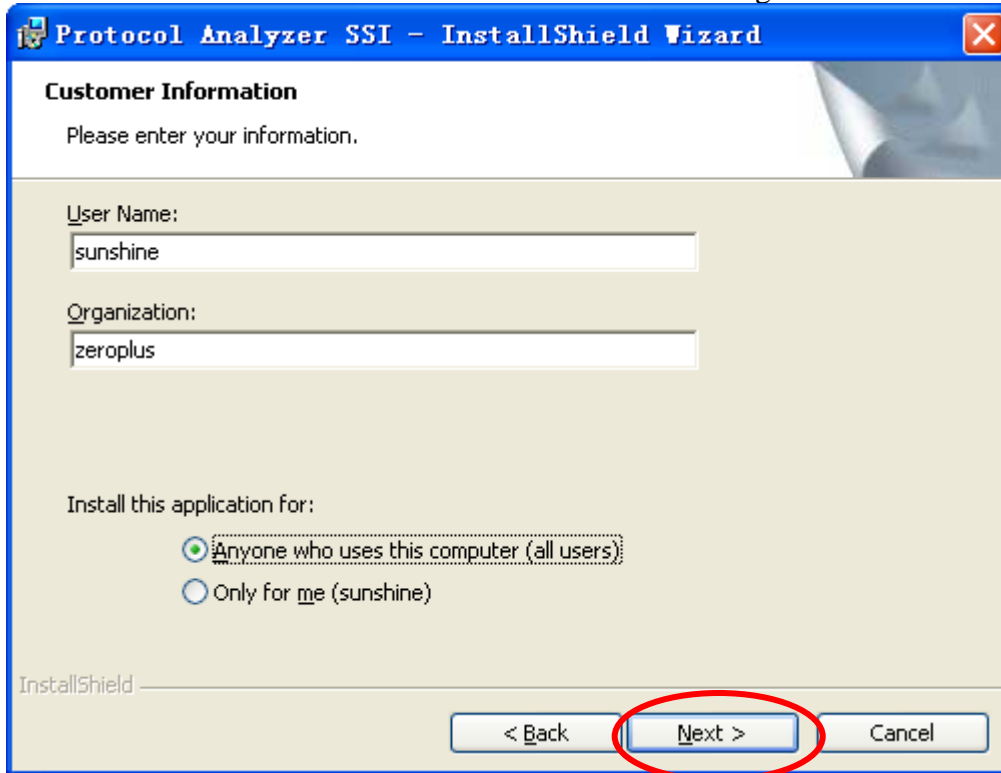


**STEP 4.** Select I accept the terms in the license agreement, and then press Next.

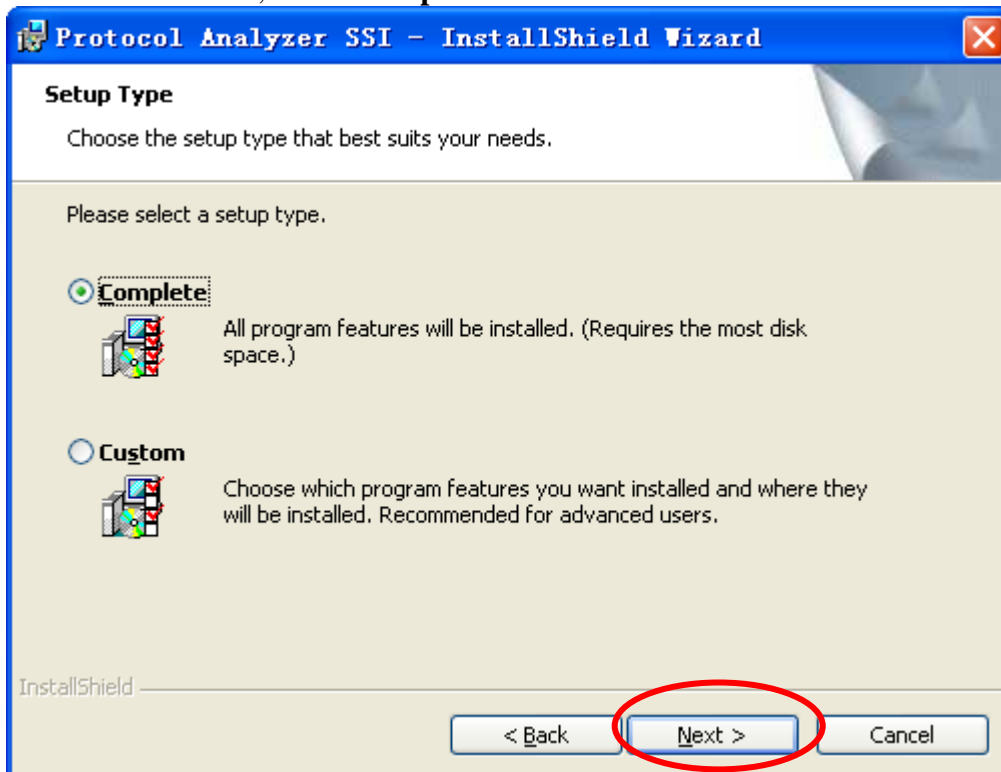




**STEP 5.** Fill in users' information in the below dialog box and click **Next**.

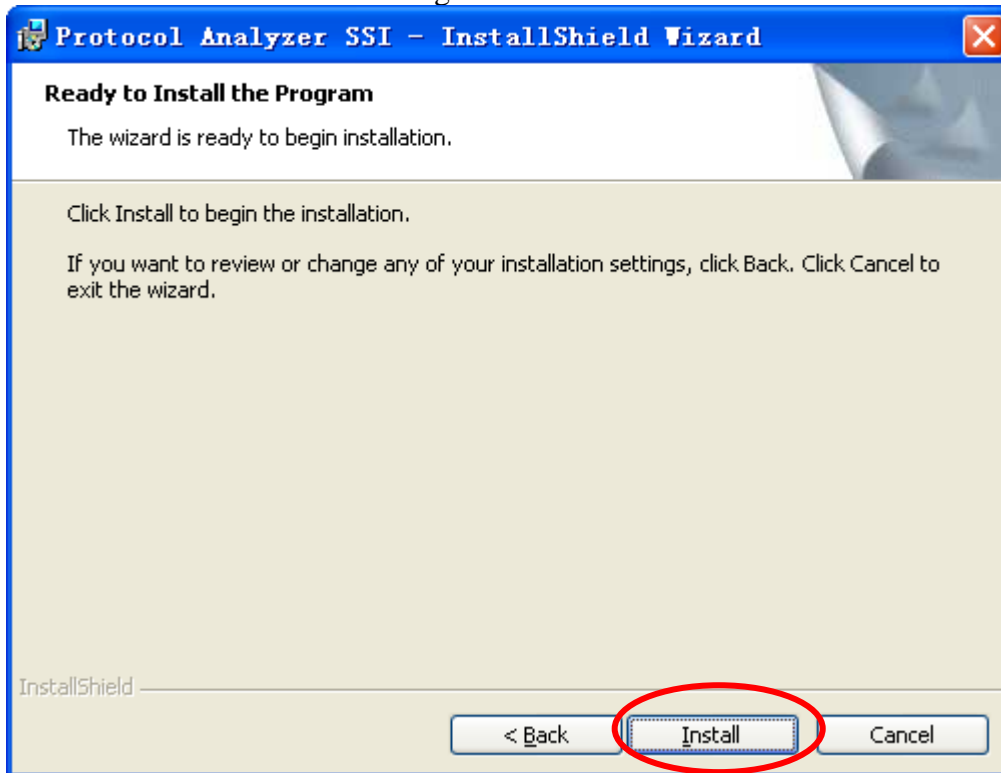


**STEP 6.** First, select **Complete** and then click **Next**.

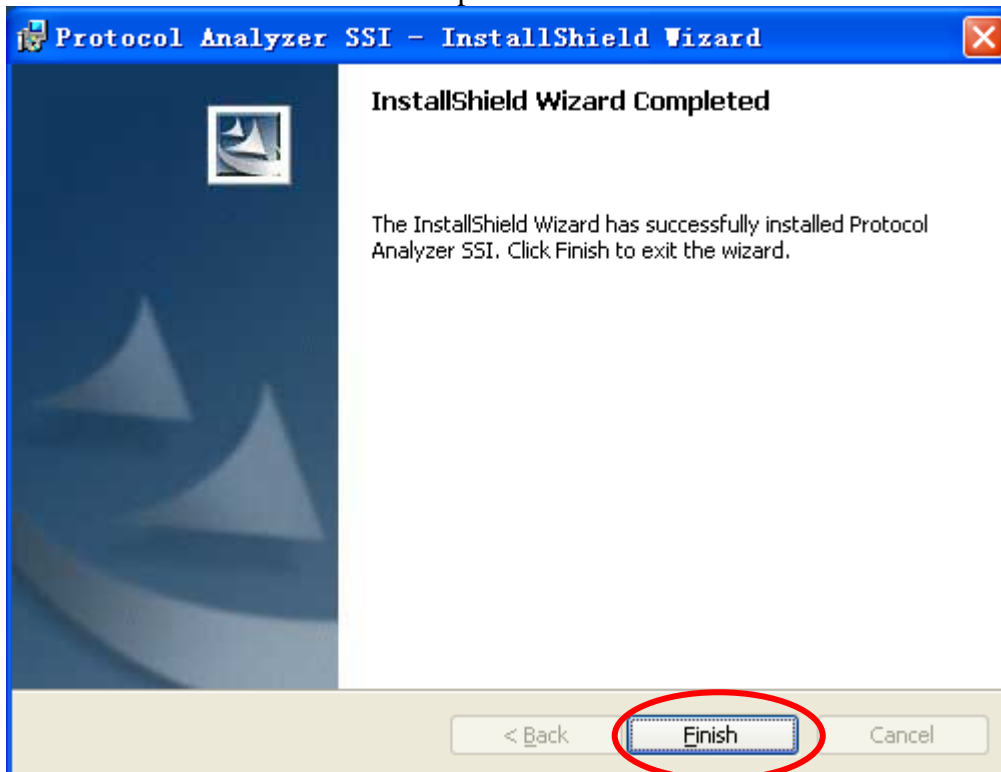




**STEP 7.** Click **Install** to begin the installation.



**STEP 8.** Click **Finish** to complete the installation.

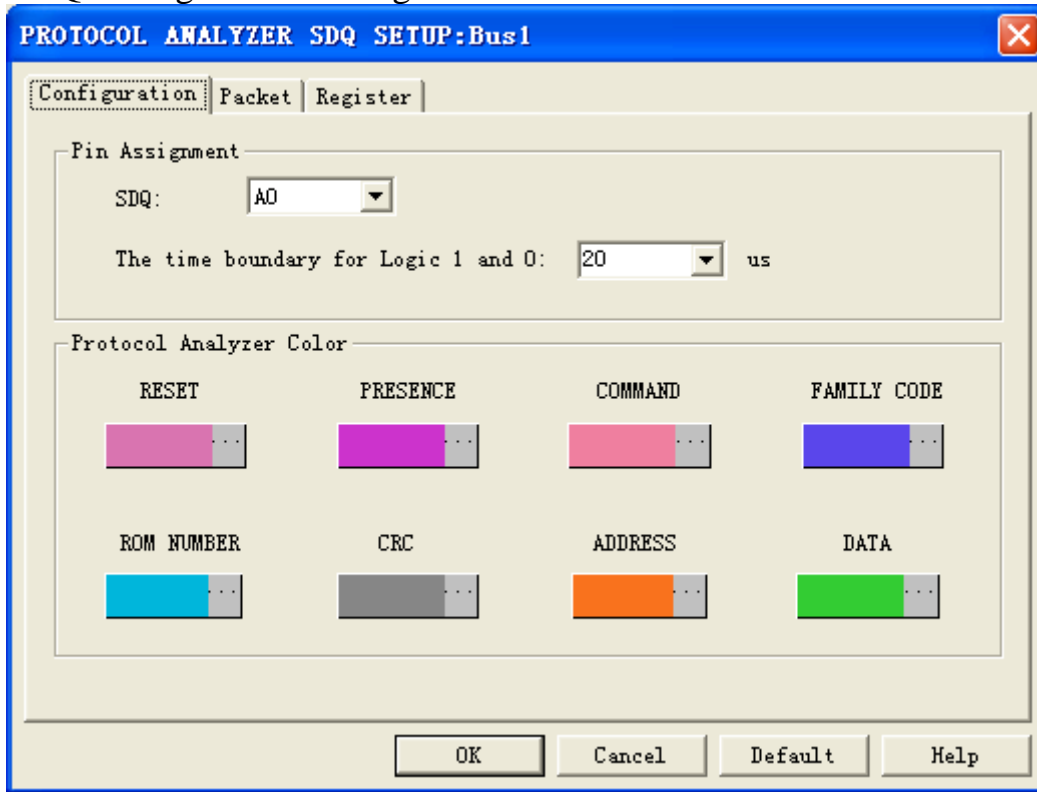




## 2 User Interface

In the configuration dialog box, please refer to the below images to select options of setting **SDQ MODULE**.

### SDQ Configuration Dialog Box



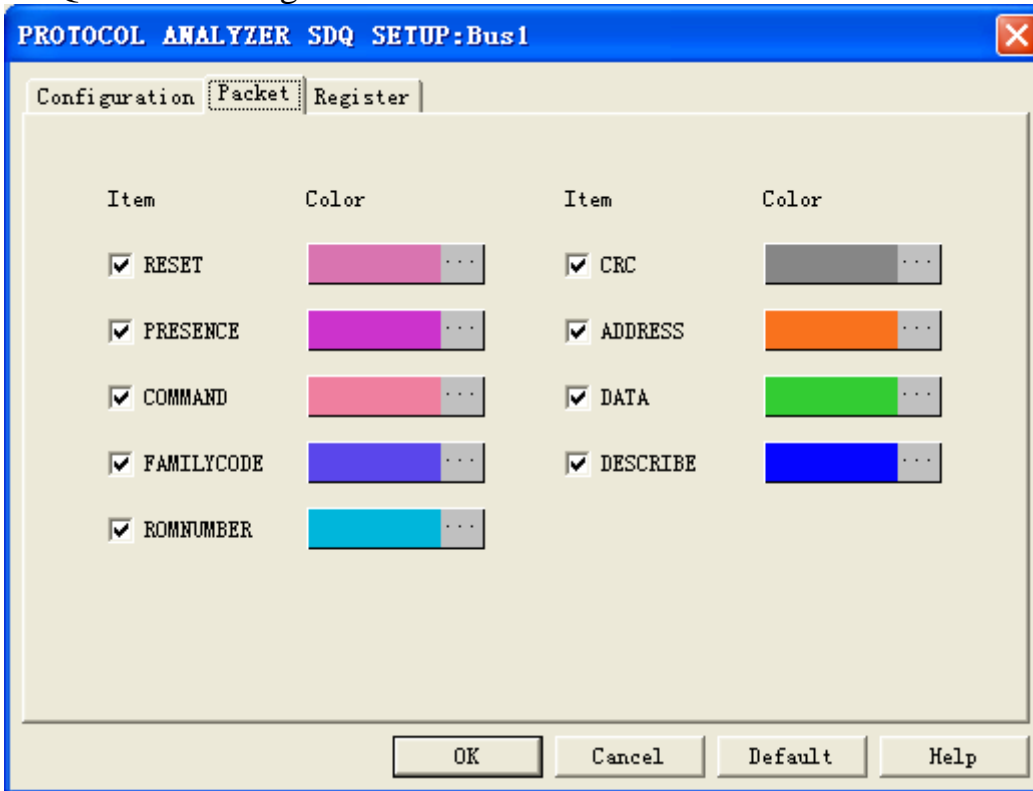
**Pin Assignment:** SDQ only needs one channel to complete the decoding.

**The time boundary for Logic 1 and 0:** Set a time to judge the decoding value is logic 0 or logic 1. For example, the default value is 20us. If the time which SDQ keeps Low Level for is less than 20us, it judges as logic 1; if the time which SDQ keeps Low Level for is longer than 20us, it judges as logic 0.

**Protocol Analyzer Color:** It is used to set the color of the packet; users can vary the color of the packet as their requirements.

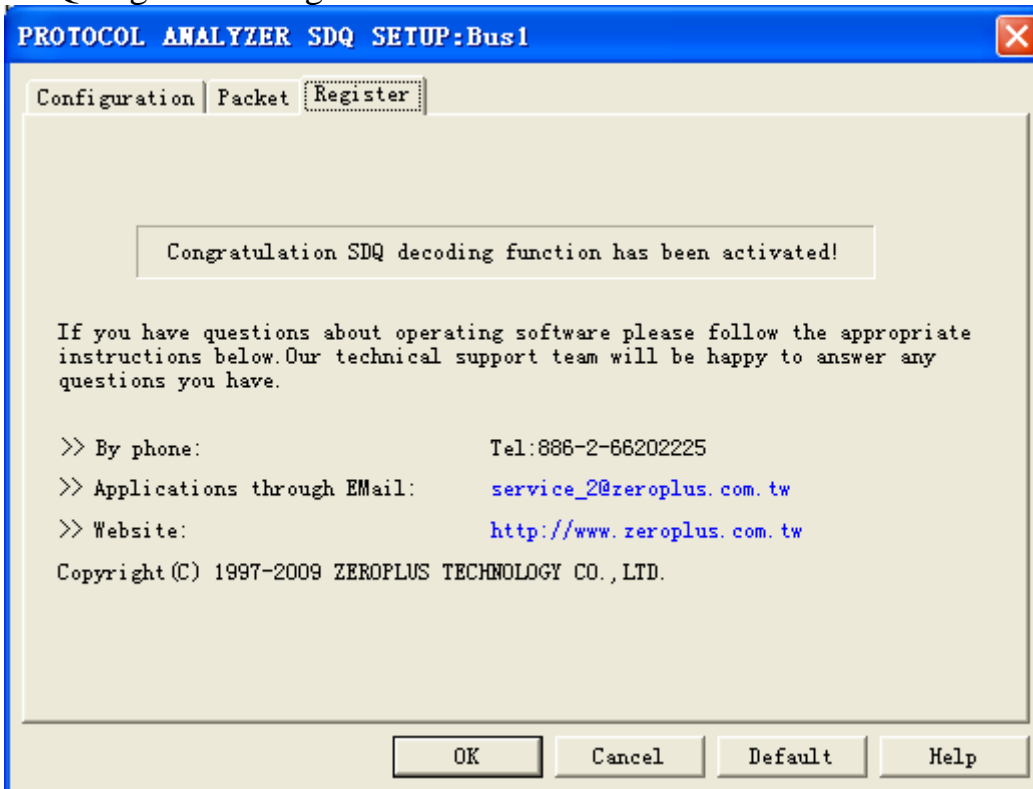


### SDQ Packet Dialog Box



Users can vary the color of the packet as their requirements

### SDQ Register Dialog Box



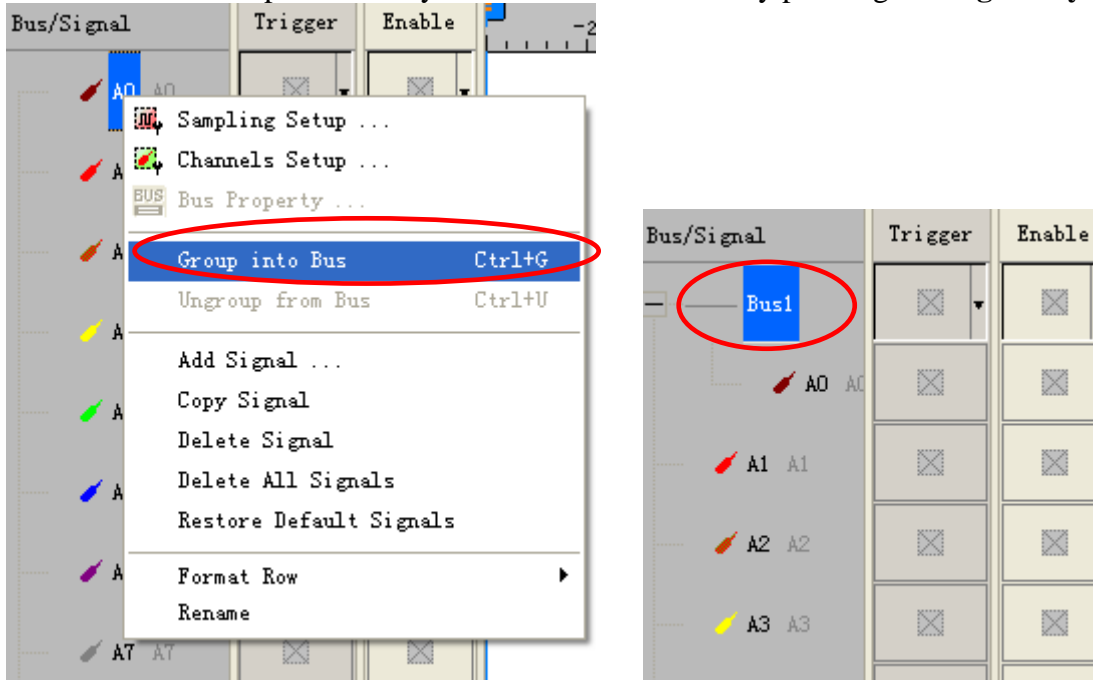
There is written ZeroPlus company information. If you have any questions about software operations, you can contact ZeroPlus by Telephone or Email.



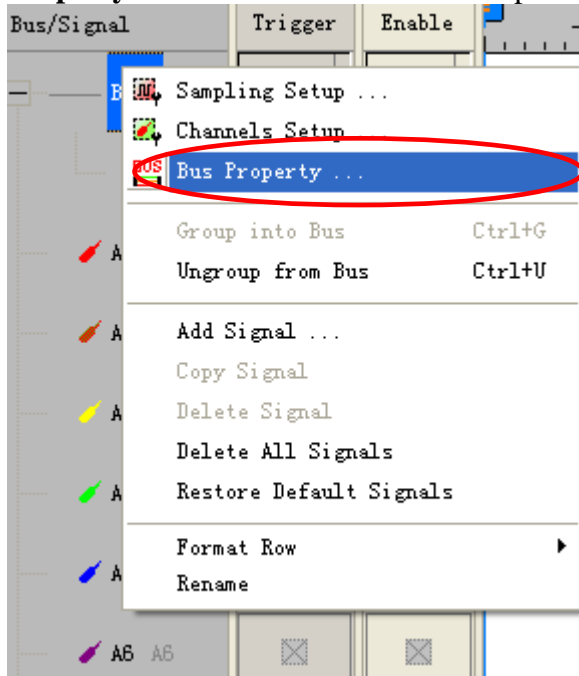


### 3 Operating Instructions

**STEP 1.** Group the unanalyzed channels into **Bus1** by pressing the **Right Key** on the mouse.

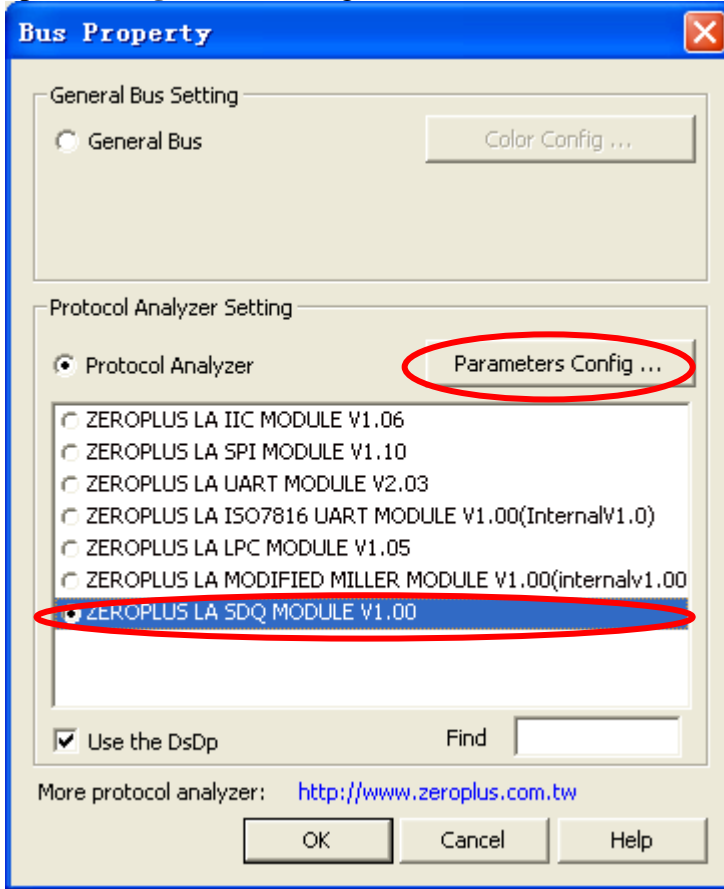


**STEP 2.** Select **Bus1**, then press **Right Key** on the mouse to list the menu, and then press **Bus Property** or **Bus** bar on the toolbar to open **Bus Property** dialog box.

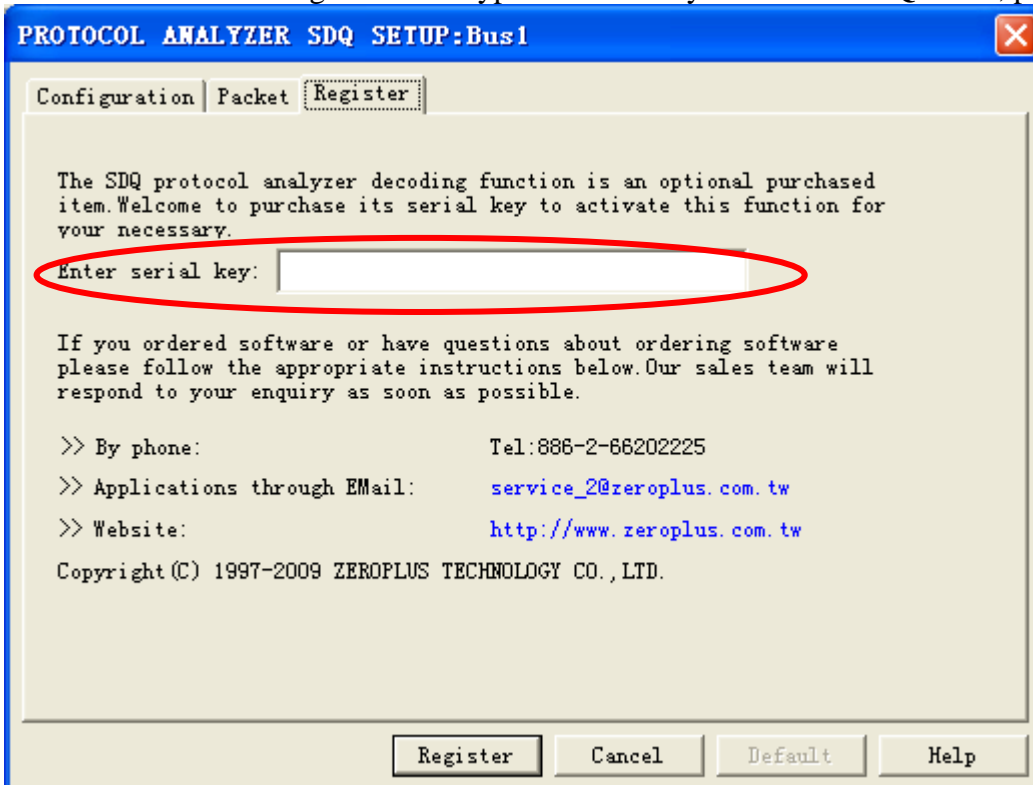




**STEP 3.** For Protocol Analyzer SDQ Parameters Configuration, select Protocol Analyzer, and then select **ZEROPLUS LA SDQ MODULE V1.00**. Next click **Parameters Configuration** to open **Configuration** dialog box.

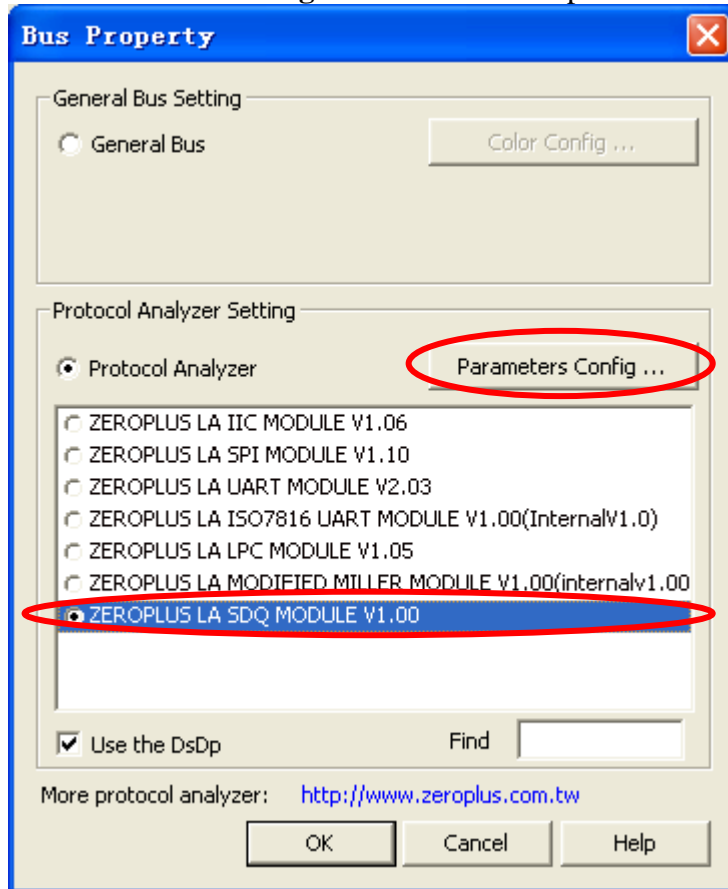


**STEP 4.** Click Register tab to type the serial key number of SDQ. Then, press **Register**.

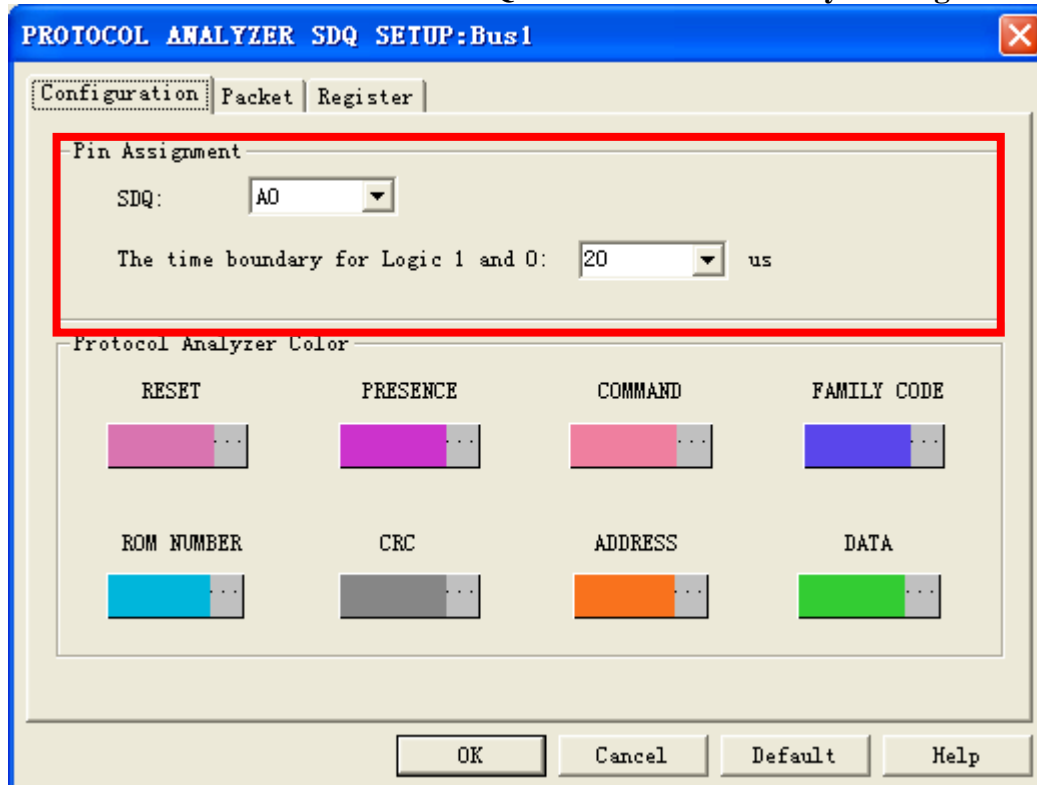




**STEP 5.** After completing **Register**, come back to the **Bus Property** dialog box, and then click the **Parameters Configuration** to start the protocol analyzer SDQ setup.

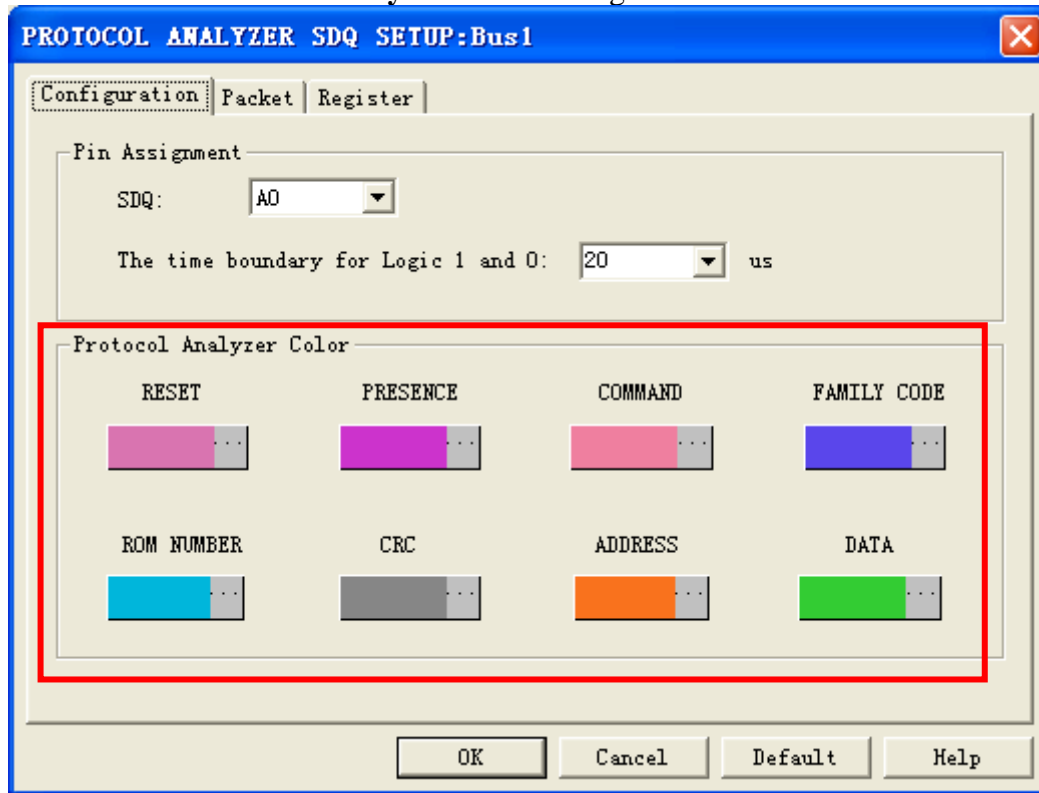


**STEP 6.** Set the channel for **SDQ** and **The time boundary for Logic 1 and 0**.





**STEP 7. Protocol Analyzer Color settings.**





**STEP 8.** Following pictures show the completion of the protocol analyzer decoding and the packet list. The trigger condition is set as the falling edge; the memory depth is 16K; the sampling frequency is 10MHz.

### Protocol Analyzer Decoding

