



孕龍科技股份有限公司
Zeroplus Technology Co., Ltd.

SPECIFICATION

MODEL: B09013-LAP-SPI PLUS-M

PART NO: _____

VERSION: V1.00

Approver		Check	Design
GM	PM		

Customer Confirm

* Please fax the file to
Zeroplus Technology after
signing .

2F, NO.123, Jian Ba Rd,
Chung Ho City, Taipei Hsian, R.O.C.

Tel:+886-2-66202225
Fax:+886-2-22234362



Content

1	Software Installation	3
2	User Interface	7
3	Operating Instructions.....	9

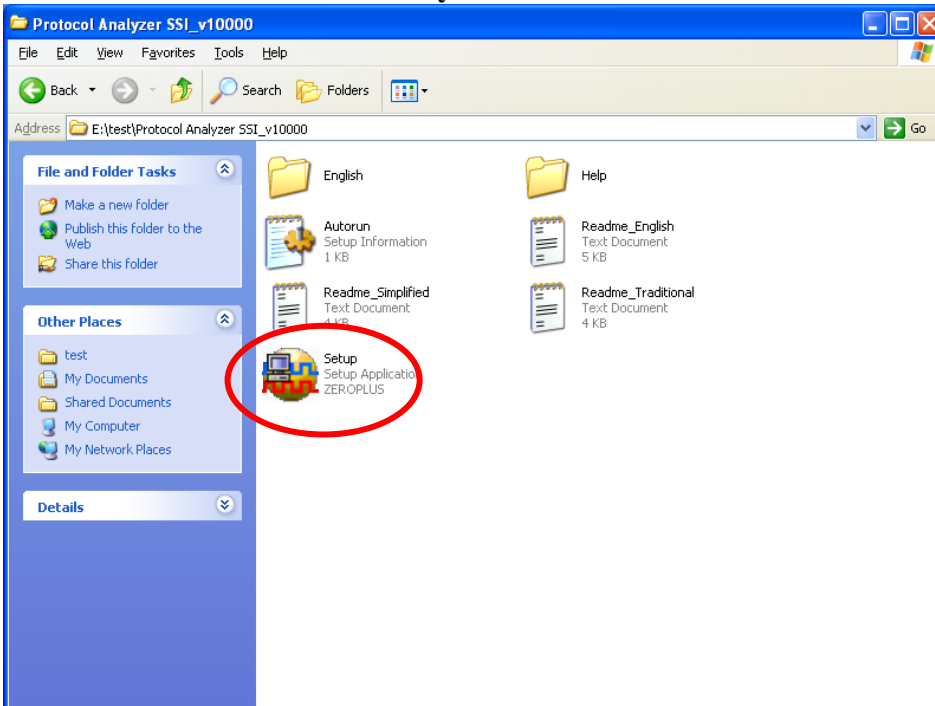


1 Software Installation

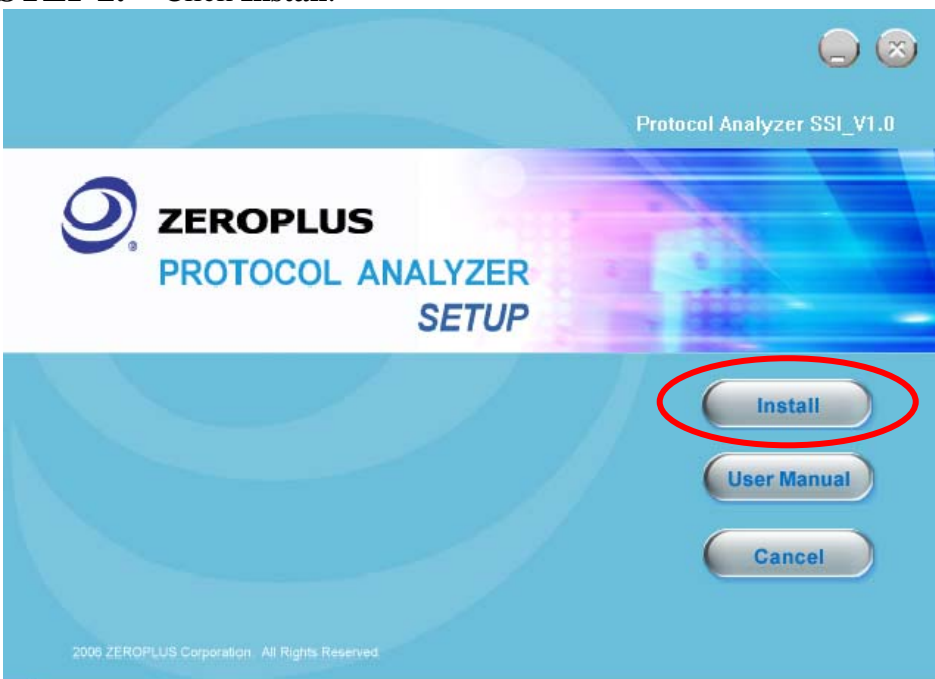
Please install the software as the following steps:

- ※ Remark: 1. The installation steps for all protocol analyzers are the same; you can complete the installation by following procedures. Following is an example on how to install protocol analyzer SSI.
- ※ Remark: 2. We won't have additional notice for you, when there is any modification of the module specification. If there is some unconformity caused by the module version upgrade, users should take the module software as the standard.

STEP 1. Install Protocol Analyzer Module.

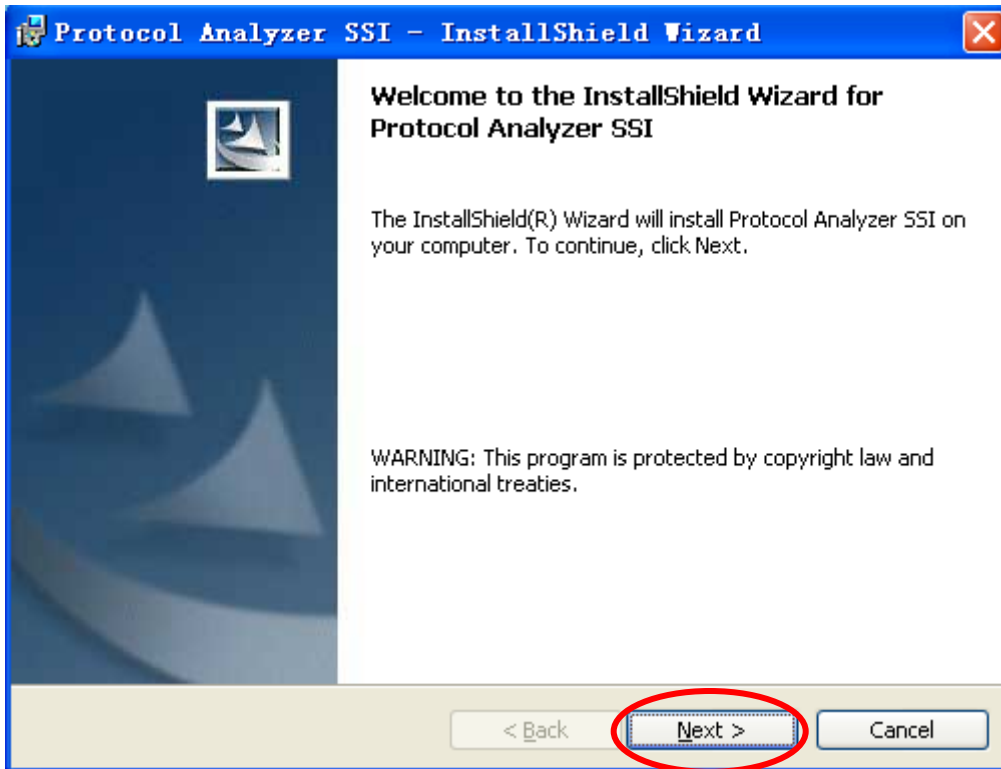


STEP 2. Click Install.

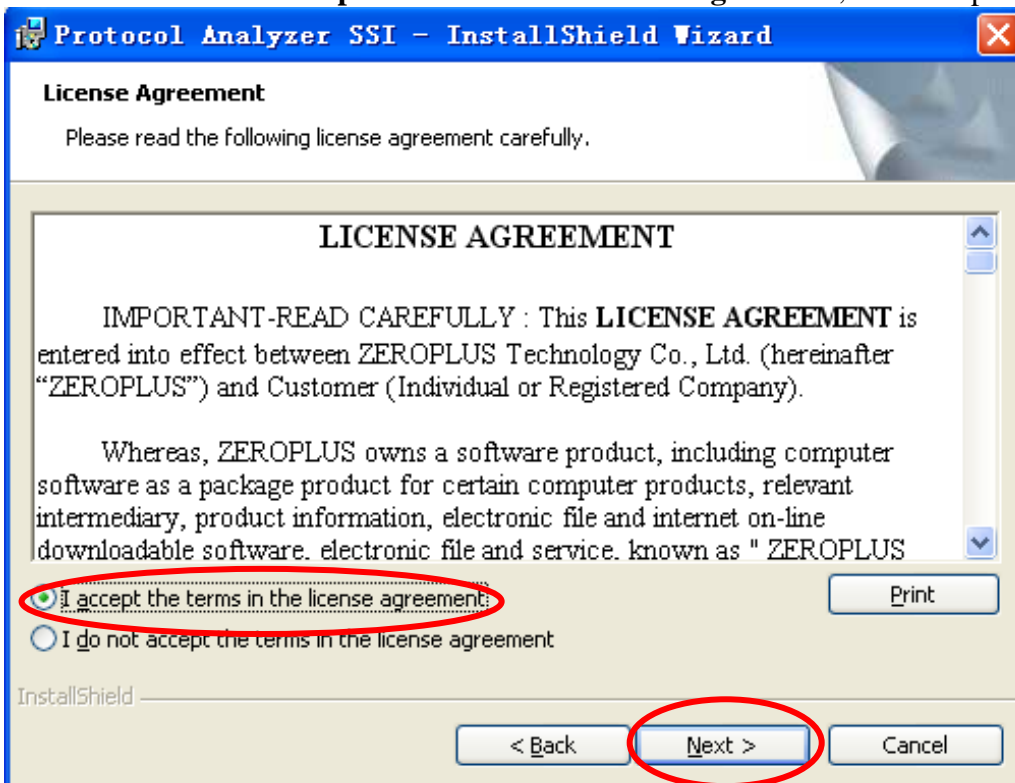




STEP 3. Click Next.



STEP 4. Select **I accept the terms in the license agreement**, and then press **Next**.





STEP 5. Fill in users' information in the below dialog box and click **Next**.

Protocol Analyzer SSI - InstallShield Wizard

Customer Information

Please enter your information.

User Name:
sunshine

Organization:
zeroplus

Install this application for:

Anyone who uses this computer (all users)

Only for me (sunshine)

InstallShield

< Back **Next >** Cancel


STEP 6. First, select **Complete** and then click **Next**.


Protocol Analyzer SSI - InstallShield Wizard

Setup Type

Choose the setup type that best suits your needs.

Please select a setup type.

Complete
 All program features will be installed. (Requires the most disk space.)

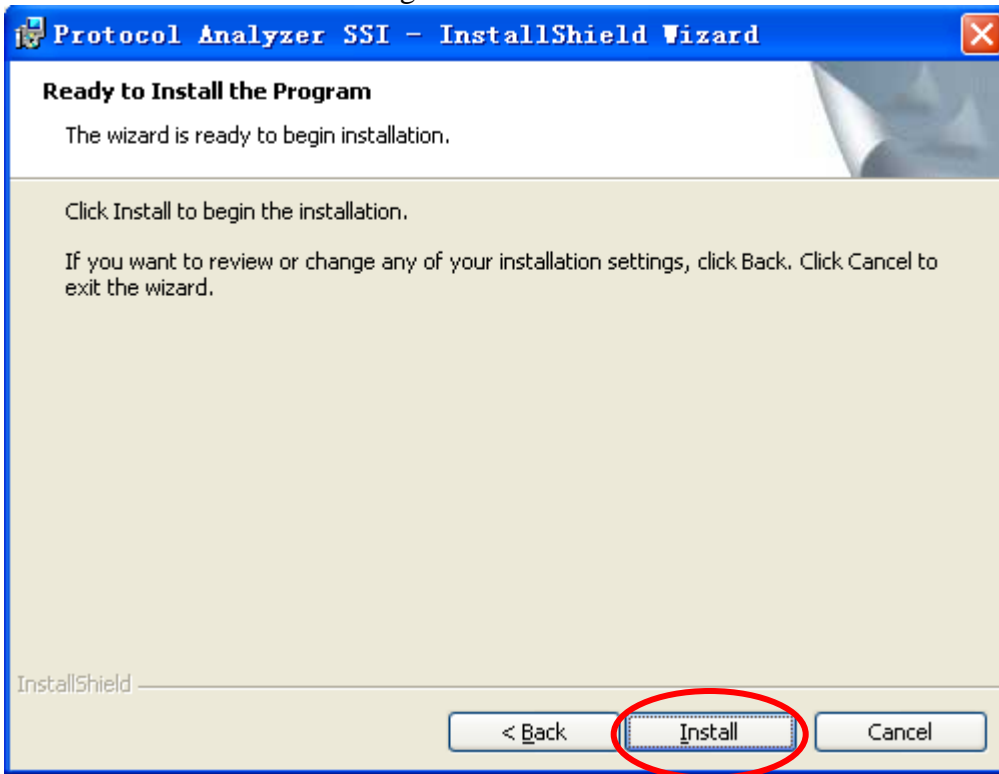
Custom
 Choose which program features you want installed and where they will be installed. Recommended for advanced users.

InstallShield

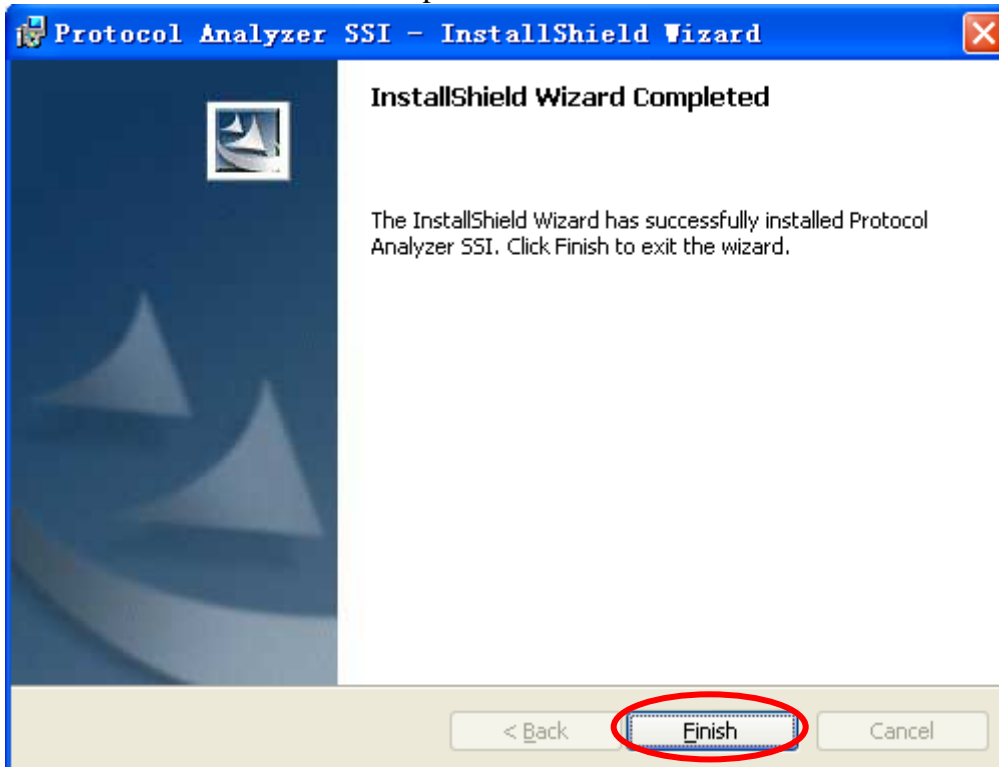
< Back **Next >** Cancel



STEP 7. Click **Install** to begin the installation.



STEP 8. Click **Finish** to complete the installation.

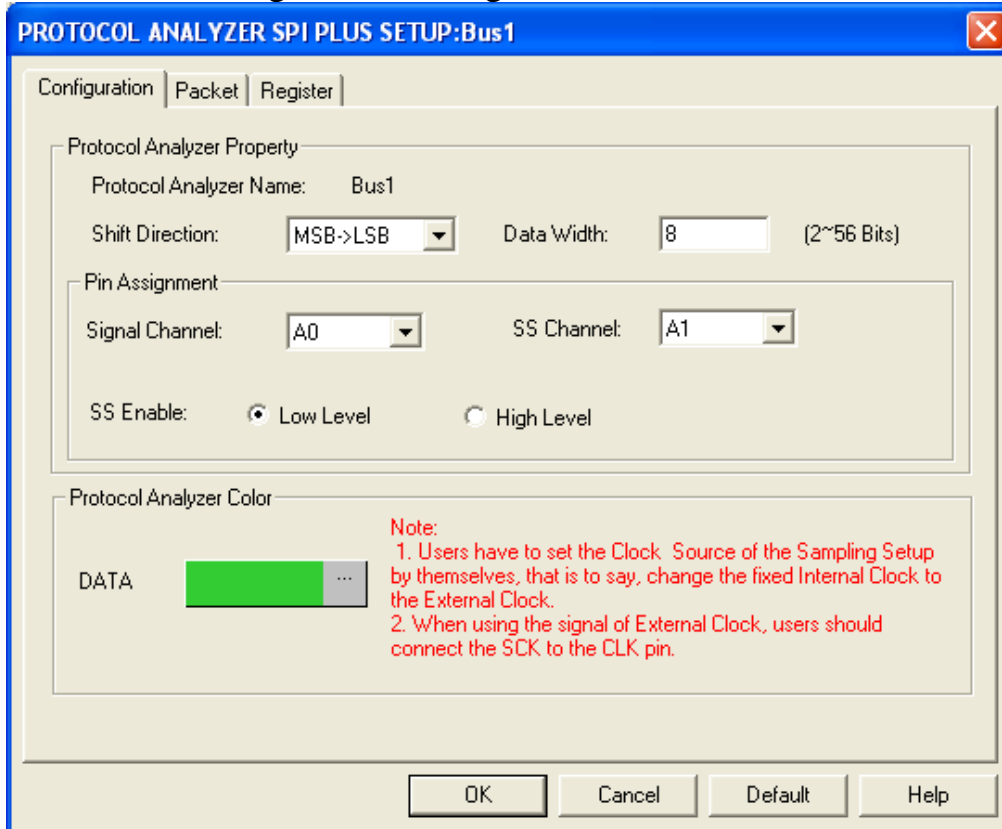




2 User Interface

In the configuration, please refer to the below images to select options of setting SPI PLUS module.

SPI PLUS Configuration Dialog Box

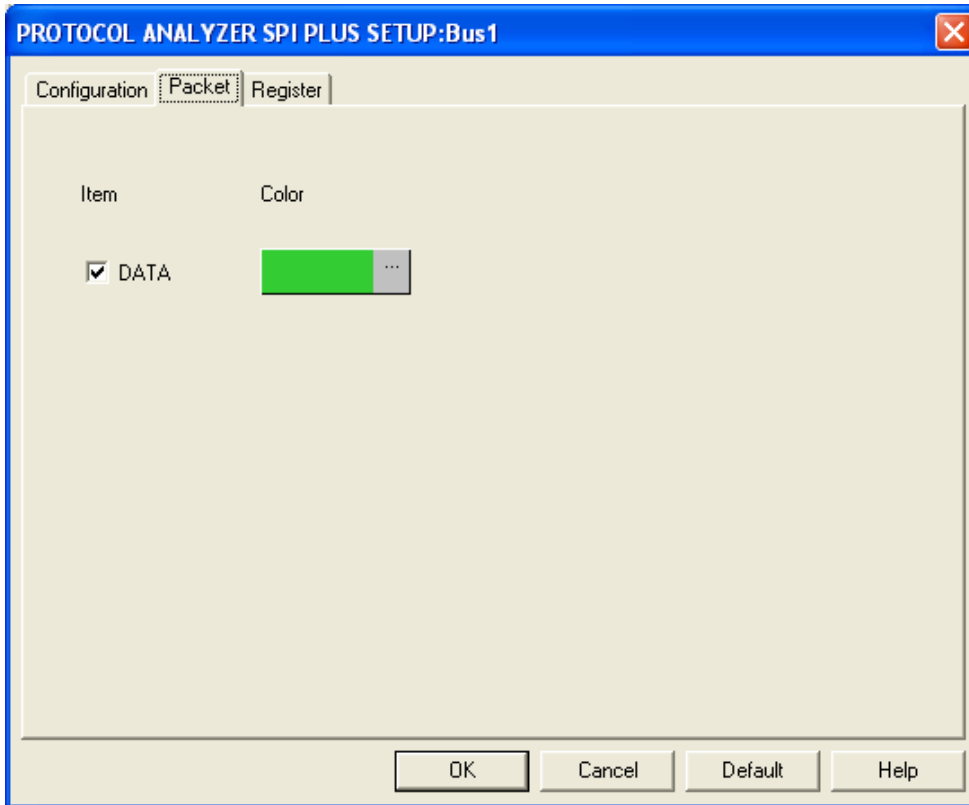


Pin Assignment: There are two channels for SPI PLUS decoding, which are Signal Channel and SS Channel. The SS Enable is the serial selection signal channel, which can be set as High Level or Low Level; the default is Low Level.

Protocol Analyzer Name: It will display the Bus name of SPI PLUS.

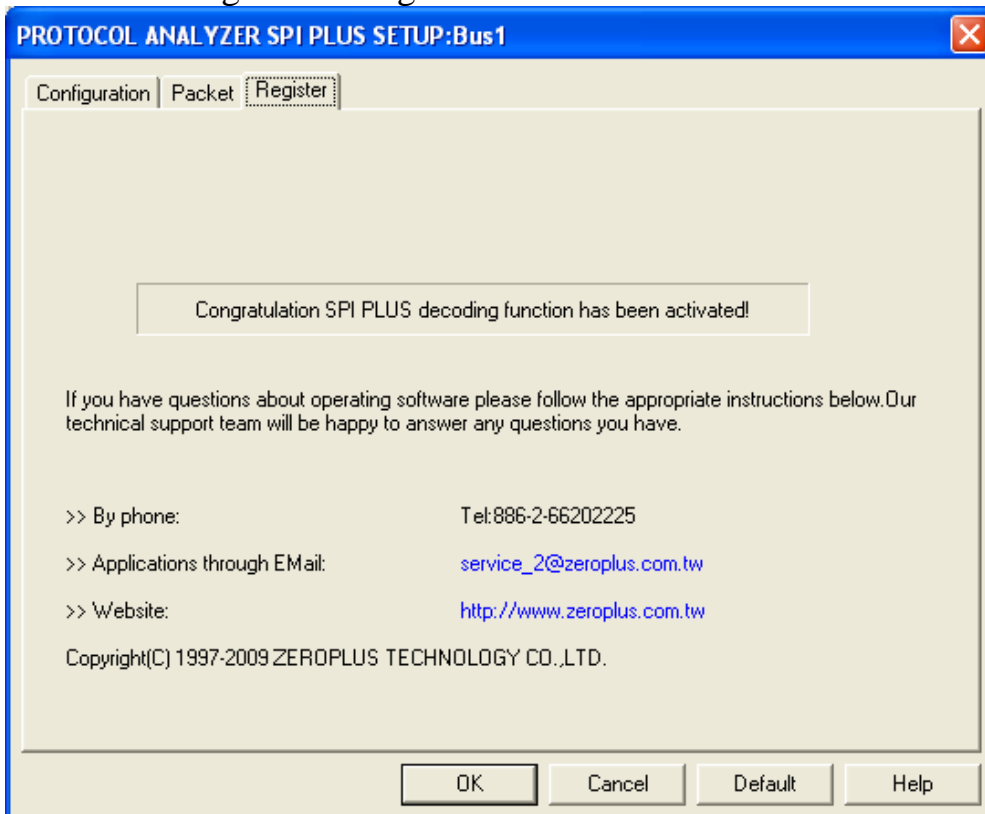
Protocol Analyzer Property: The Shift Direction can be set as MSB->LSB or LSB->MSB; the Data Width can be set from 2 to 56, and the default is 8 Bits.

Protocol Analyzer Color: The Protocol Analyzer Color can be varied by users.



In the packet part, users can set the items and colors configuration as users' requirements.

SPI PLUS Register Dialog Box

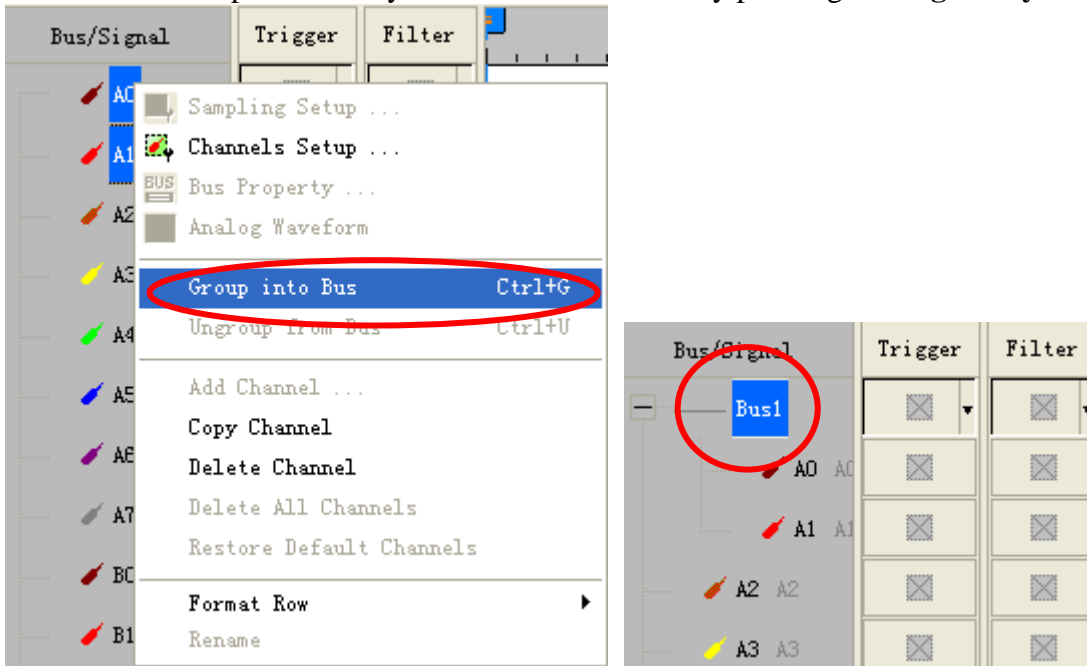


There is written ZeroPlus company information. If you have any questions about software operations, you can contact ZeroPlus by Telephone or Email.

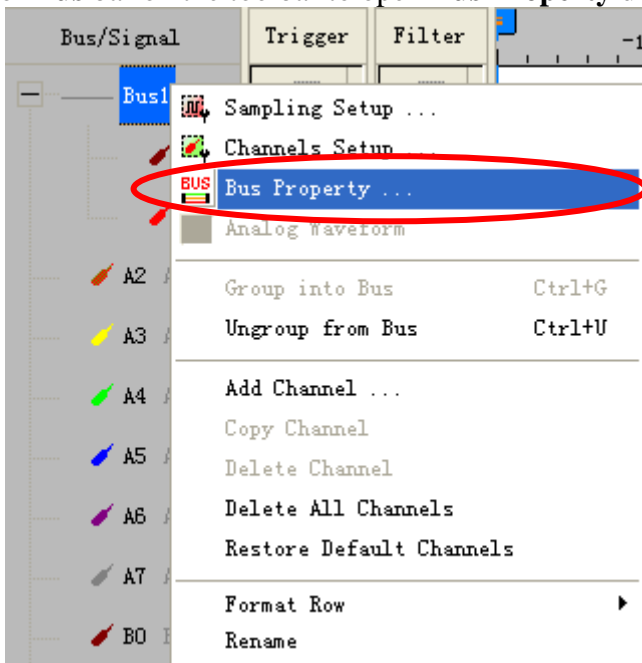


3 Operating Instructions

STEP 1. Group the unanalyzed channel into **Bus1** by pressing the **Right Key** on the mouse.

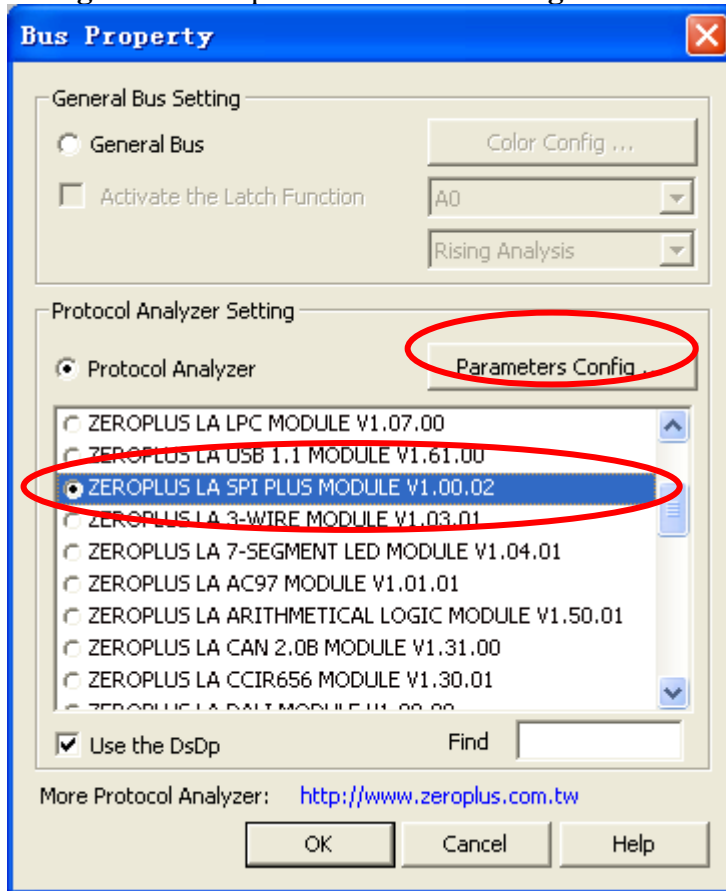


STEP 2. Select **Bus1**, and press **Right Key** on the mouse to list the menu, then press **Bus Property** or **Bus bar** on the toolbar to open **Bus Property** dialog box.

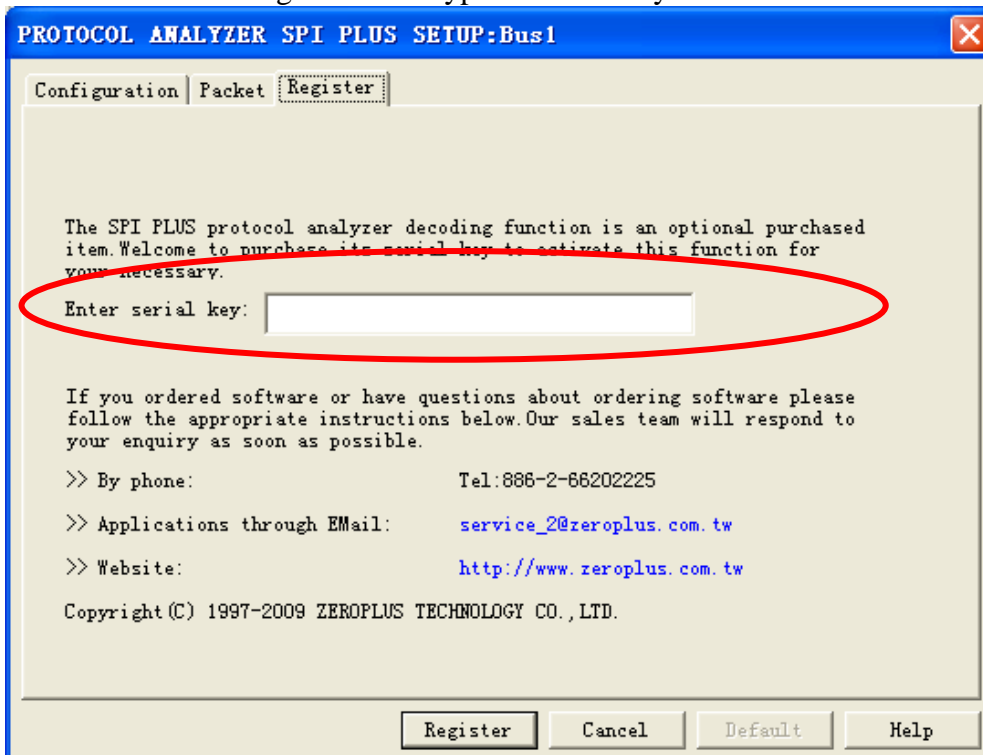




STEP 3. For Protocol Analyzer SPI PLUS Parameters Configuration, select Protocol Analyzer, and then choose **ZEROPLUS LA SPI PLUS MODULE V1.00.02**. Next click **Parameters Configuration** to open **Parameters Configuration** dialog box.

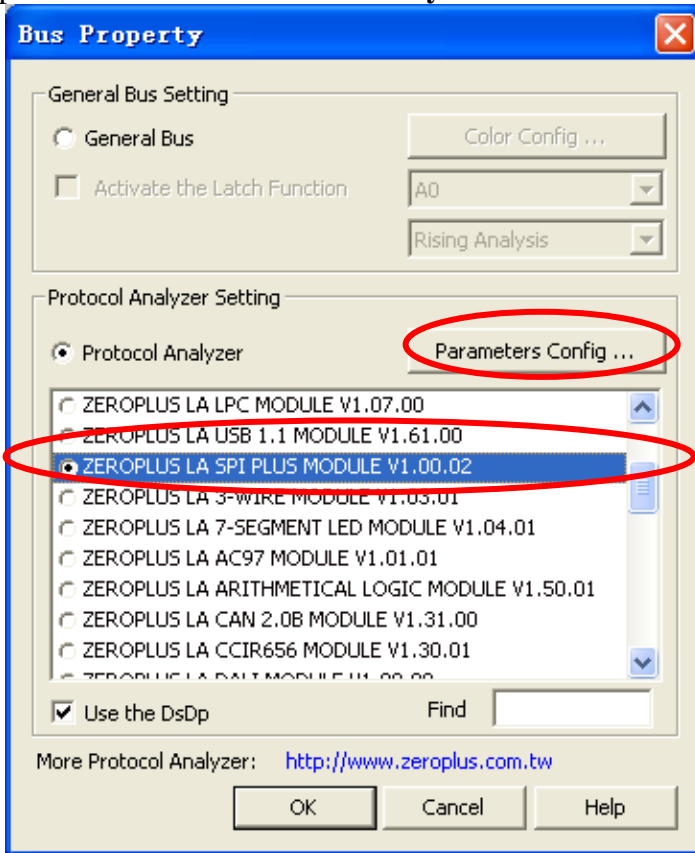


STEP 4. Press Register tab to type the serial key number of SPI PLUS. Then, press **Register**.

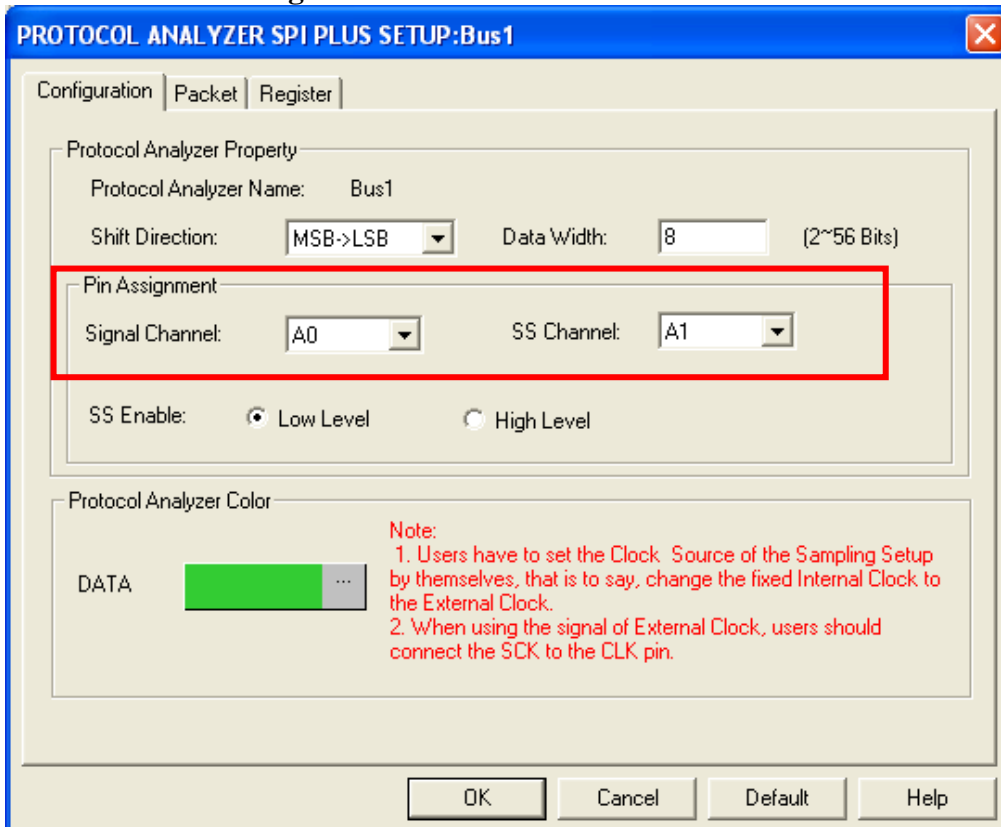




STEP 5. Click **Parameters Configuration** again, and open the Configuration dialog box to set the parameters for the **Protocol Analyzer SPI PLUS**.

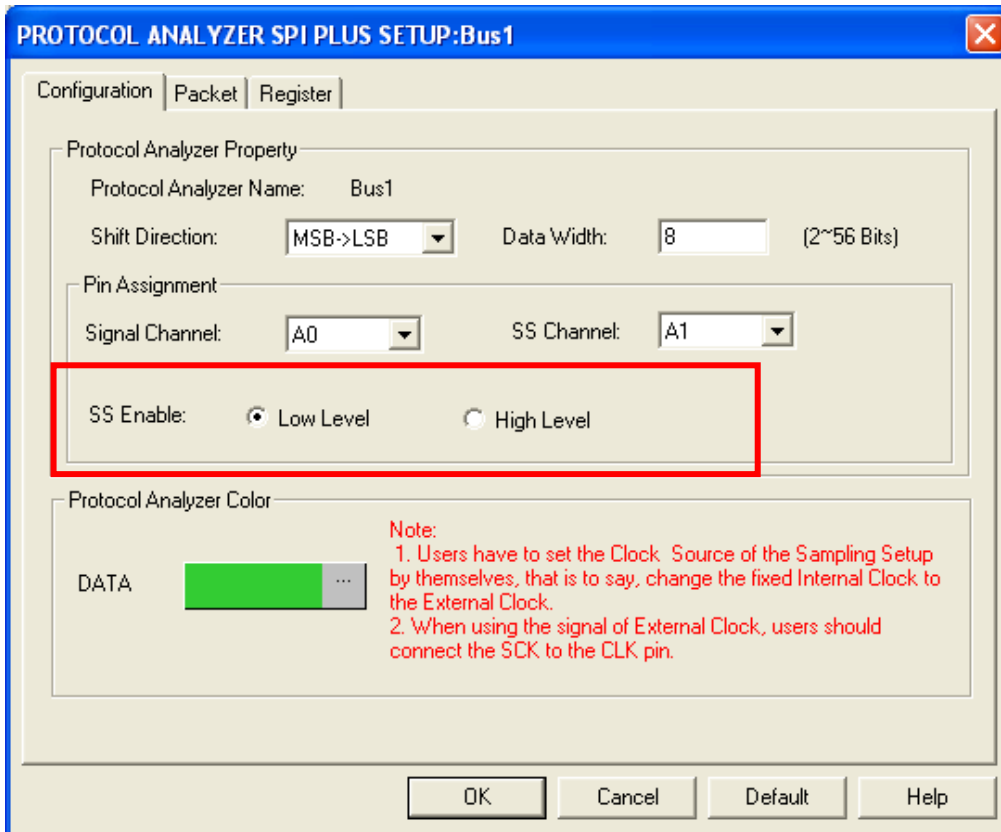


STEP 6. Set the **Signal Channel** and **SS Channel**.

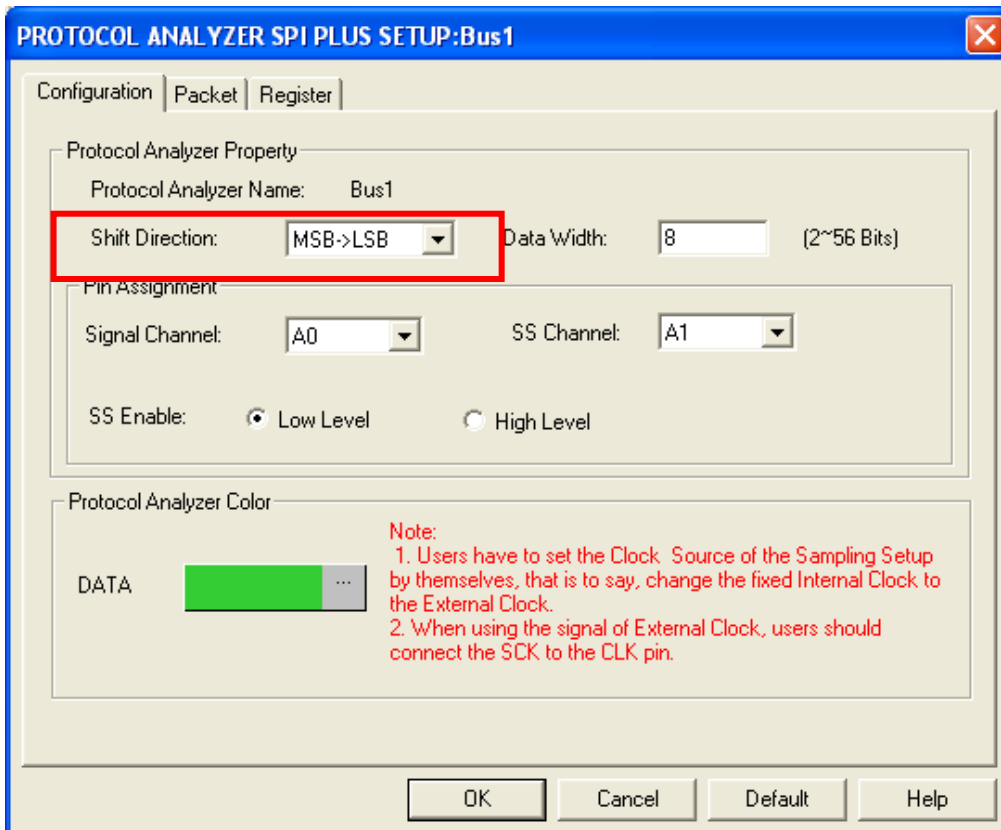




STEP 7. Set the SS Enable.

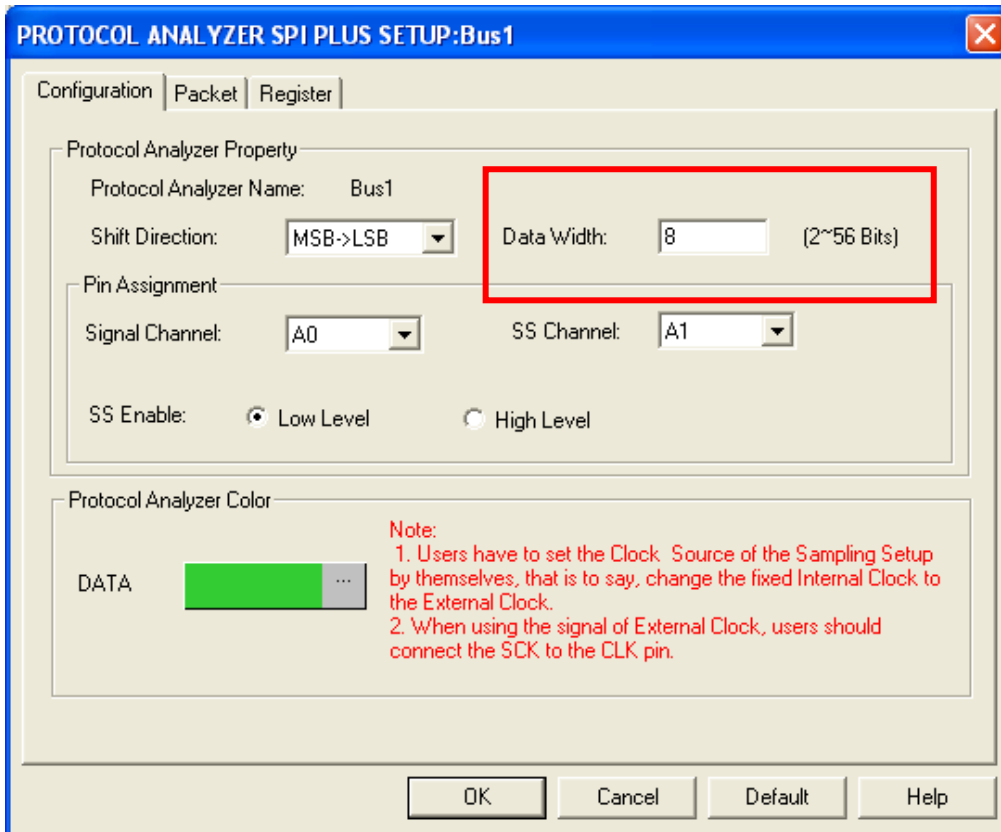


STEP 8. Set the Shift Direction.

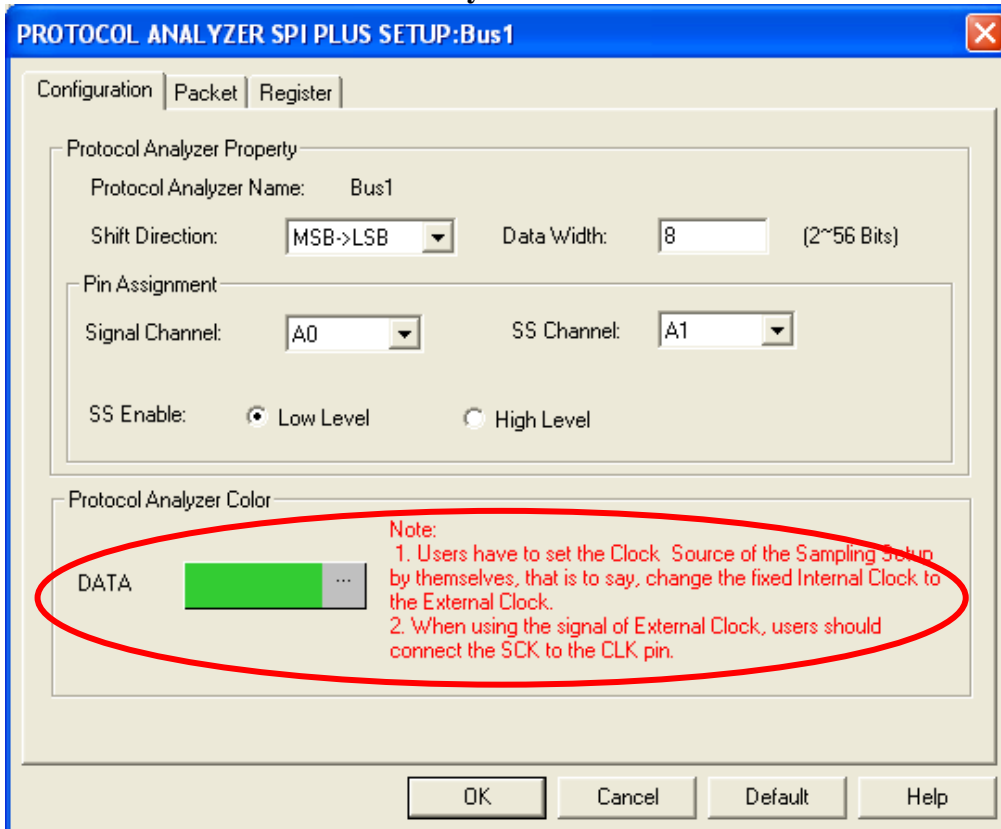




STEP 9. Set the Data Width.



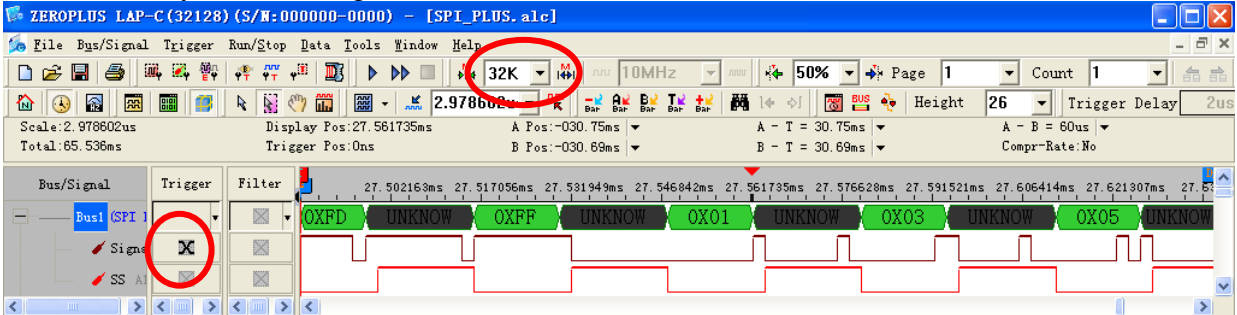
STEP 10. Set the Protocol Analyzer Color.





STEP 11. Following pictures show the completion of the protocol analyzer decoding and the packet list. The trigger condition is set as Either Edge; the memory depth is 32K; it is the External Sampling; the Internal Sampling is disabled.

Protocol Analyzer Decoding



Packet List

