



孕龍科技股份有限公司
ZEROPLUS TECHNOLOGY CO.,LTD

Instrument Business Department

ST-BUS Specification

Edition: V1.0

Content

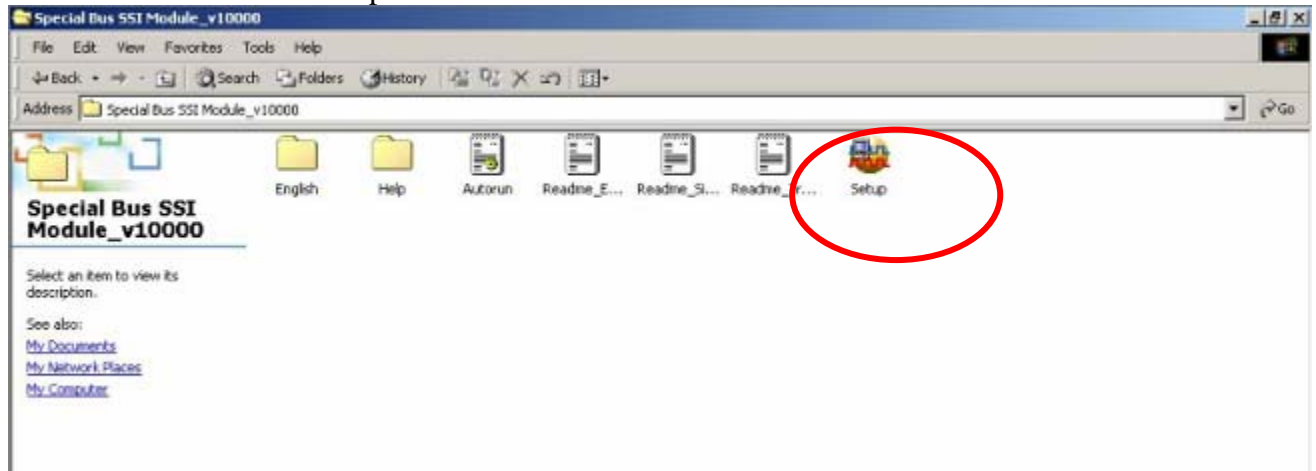
1 Software Installation	3
2 User Interface	7
3 Operating Instructions	9

1 Software Installation

Please follow these steps to install the software.

Remark: The installed steps for all Buses are the same. You can complete installation by following procedures. Below images are examples to install SSI.

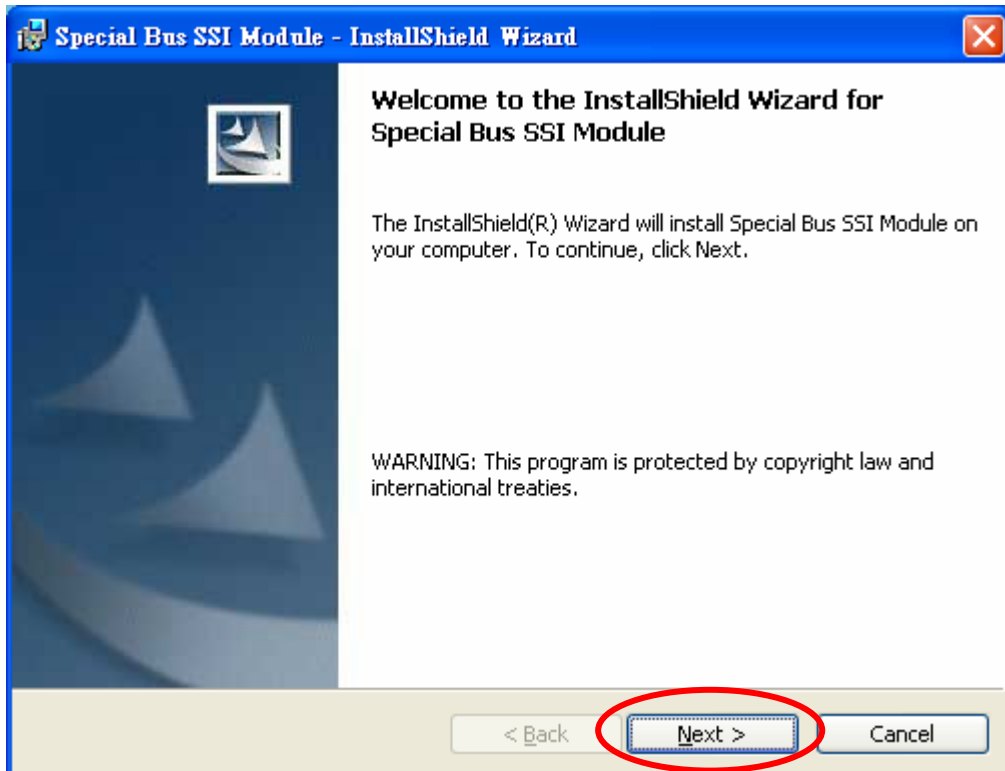
STEP 1. SSI Module setup.



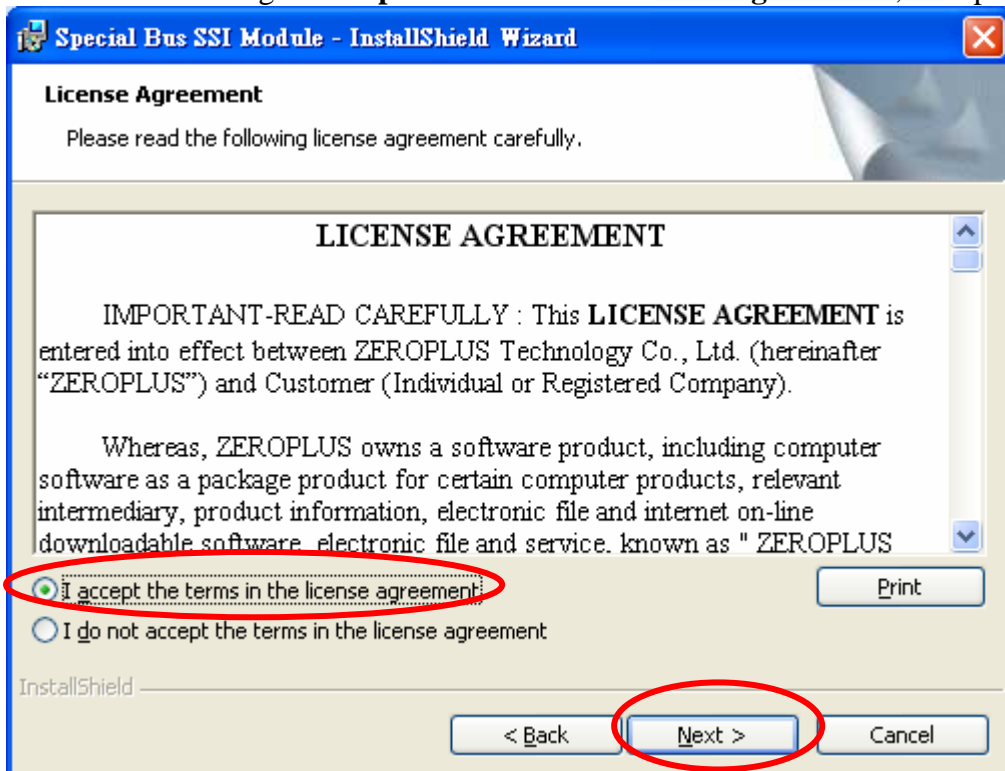
STEP 2. Click "Install" .



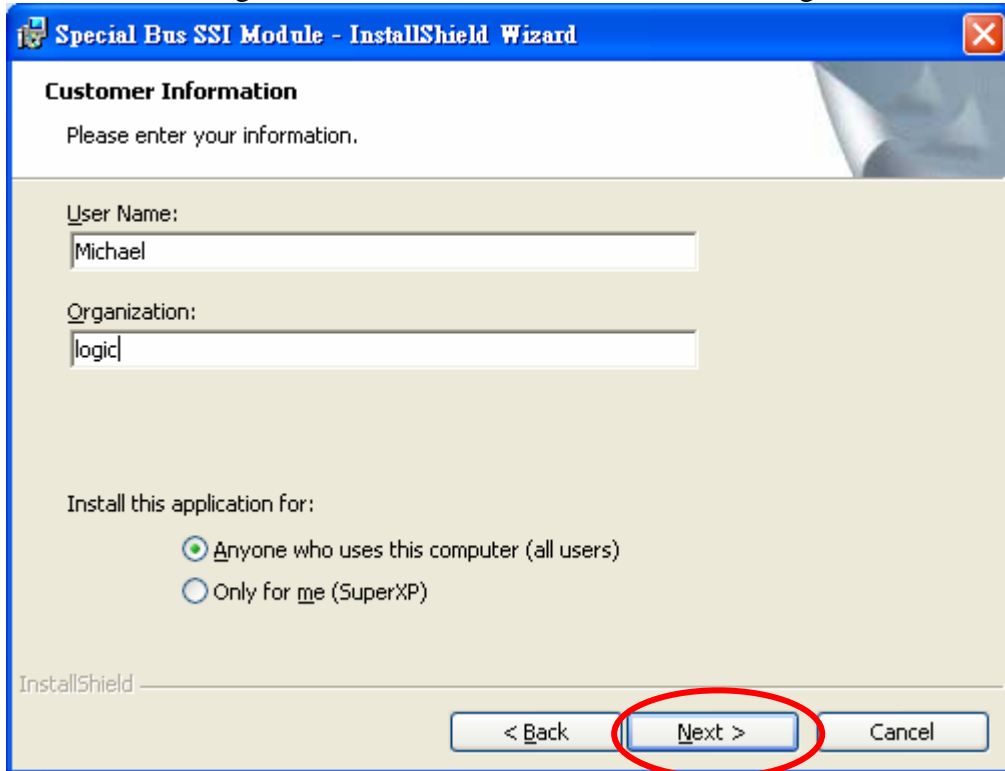
STEP 3. Click “Next”.



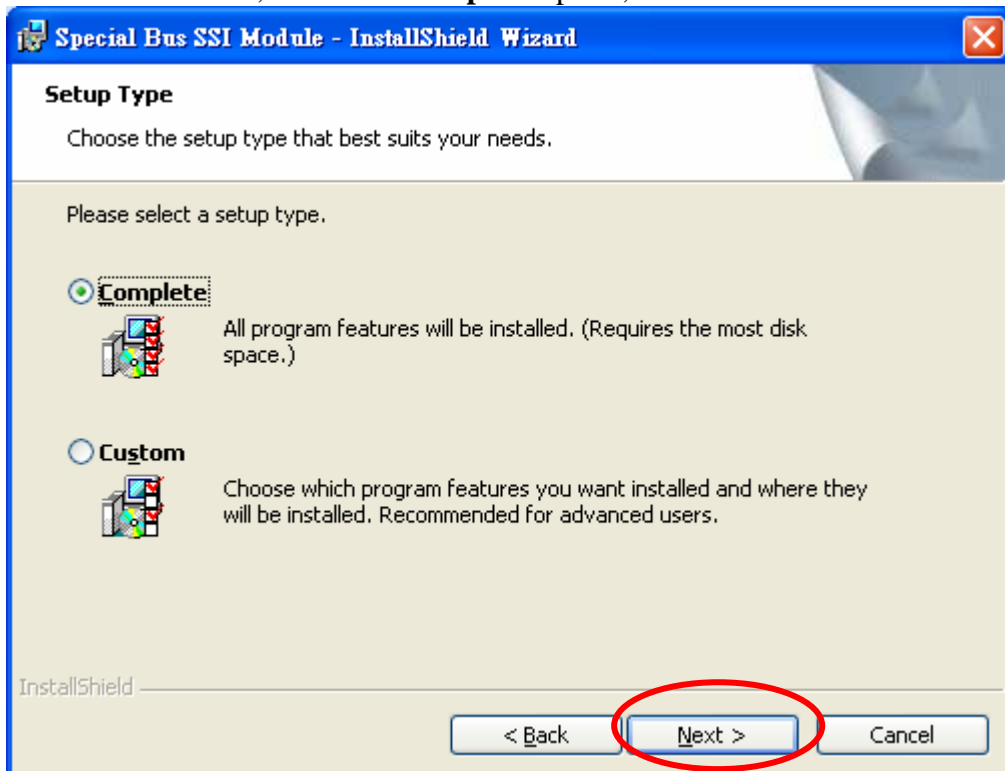
STEP 4. Clicking “I accept the terms in the license agreement”, then pressing “Next”.



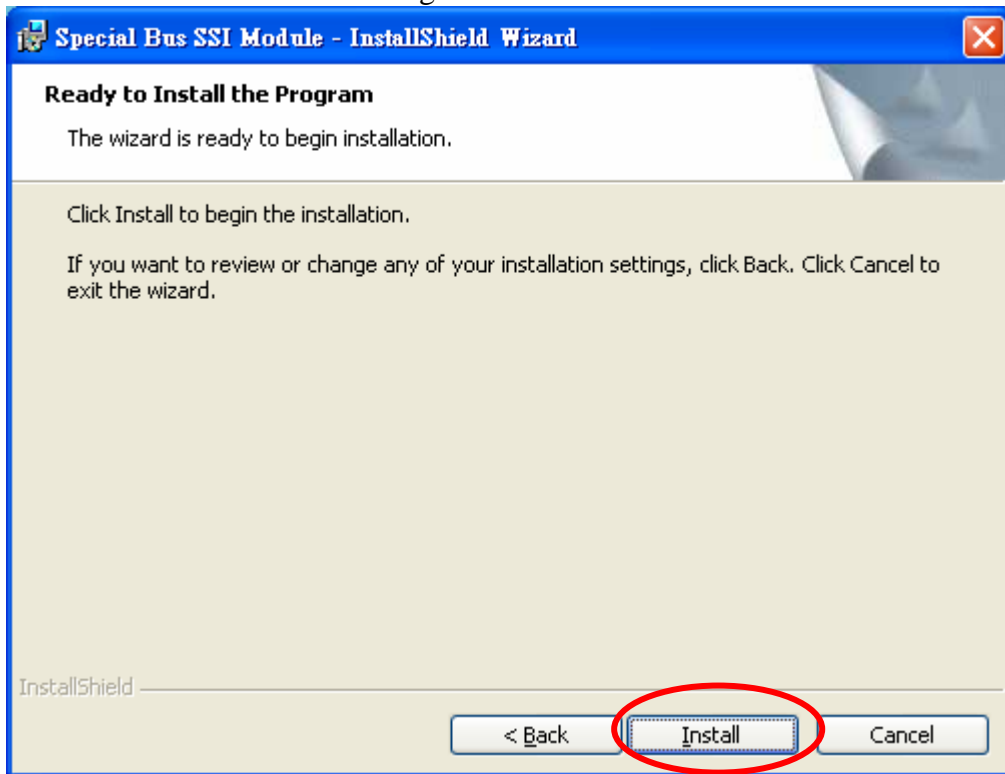
STEP 5. Filling the relative information in the below dialog box ,then clicking “Next”.



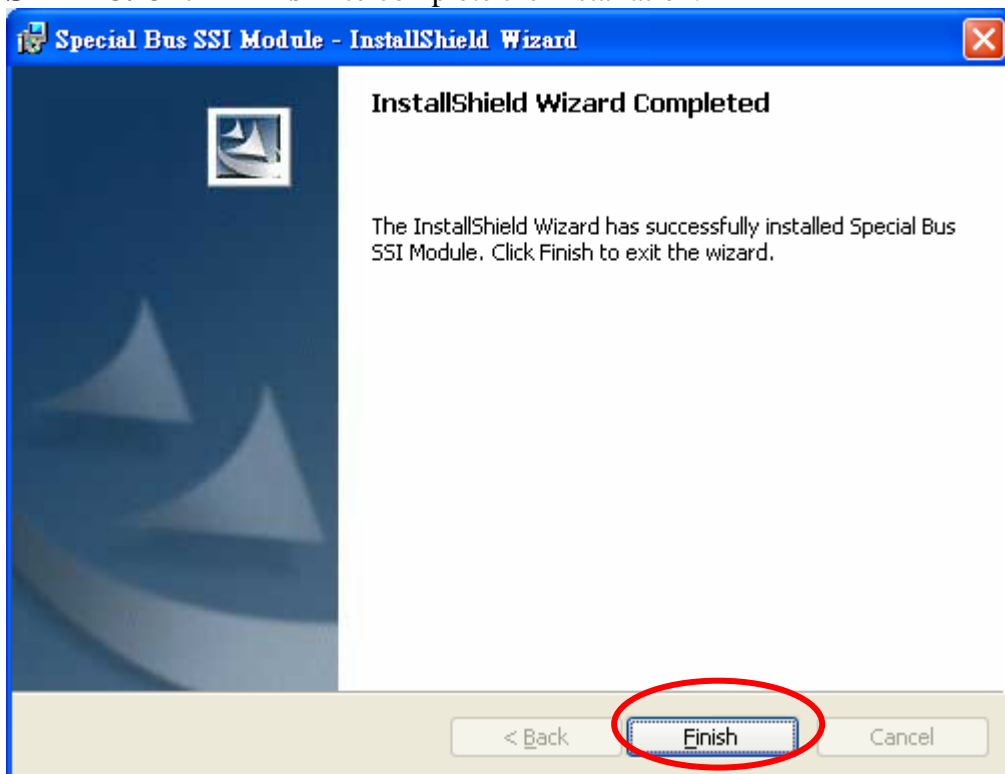
STEP 6. At first, select the **Complete** option, then to click “Next”.



STEP 7. Click “Install” to begin the installation.



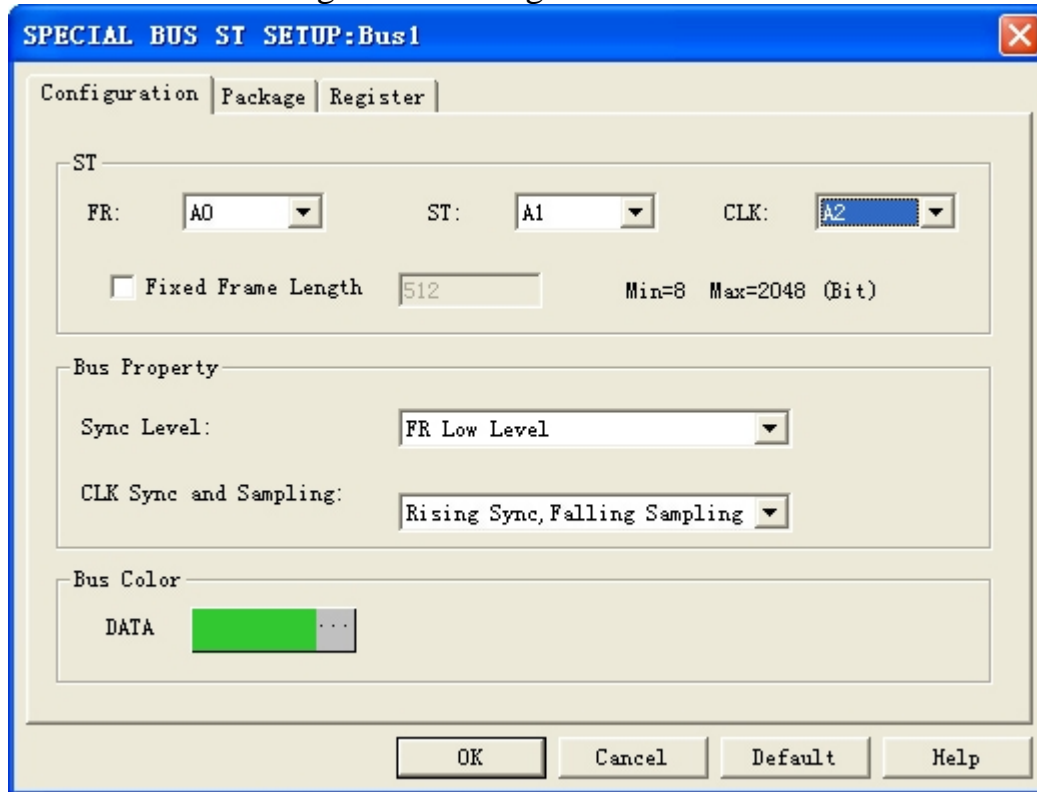
STEP 8. Click “Finish” to complete the Installation.



2 User Interface

Please refer to the below image to select options of setting ST BUS.

ST MODULE configuration dialog box for Bus1



ST channels selections:

FR: The synchronous signal channel which is used to determine the starting and ending positions of the package. The default is A0.

ST: Bus data channel of ST and GCI. The default is A1.

CLK: CLK signal channel. The default is A2.

Fixed Frame Length: The default is un_selected. When the options is selected, the frame length is limited, When the frame length is set as 512 Bit, every packages Length are 512 Bits only. The exceed and less frame length will not be decoded. The data displaying is showing as 8 bits for a group.

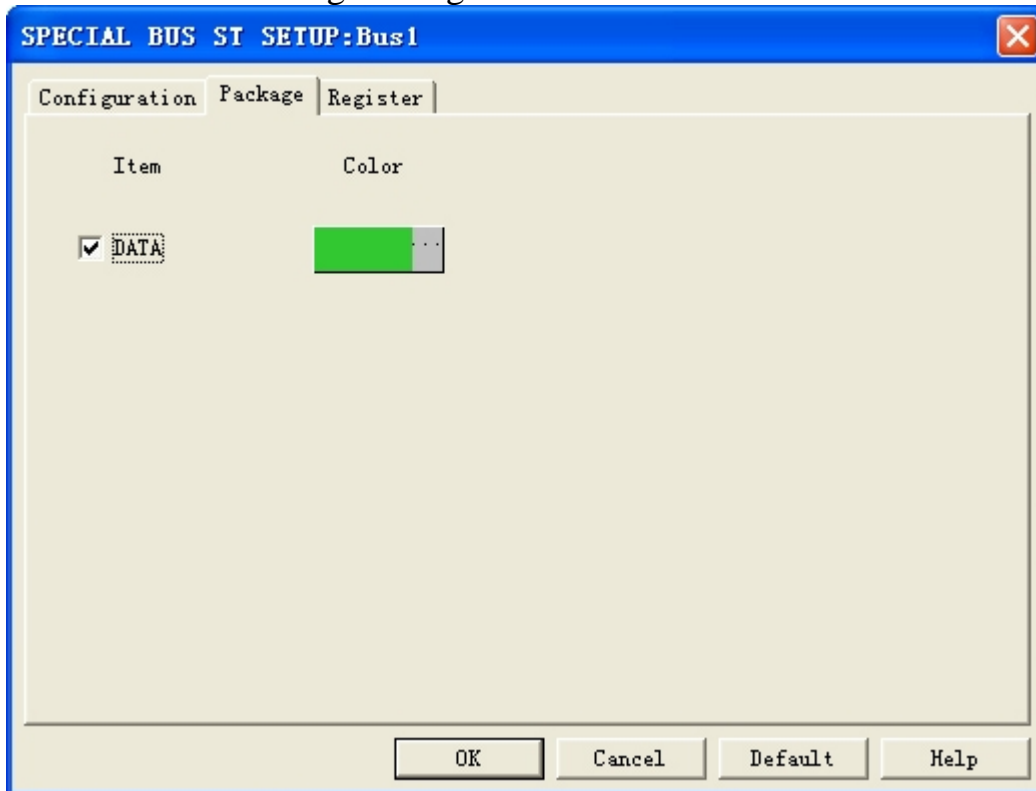
Sync Level:

The options are FR Low Level and FR High Level. The default is FR Low Level.

CLK Sync and Sampling:

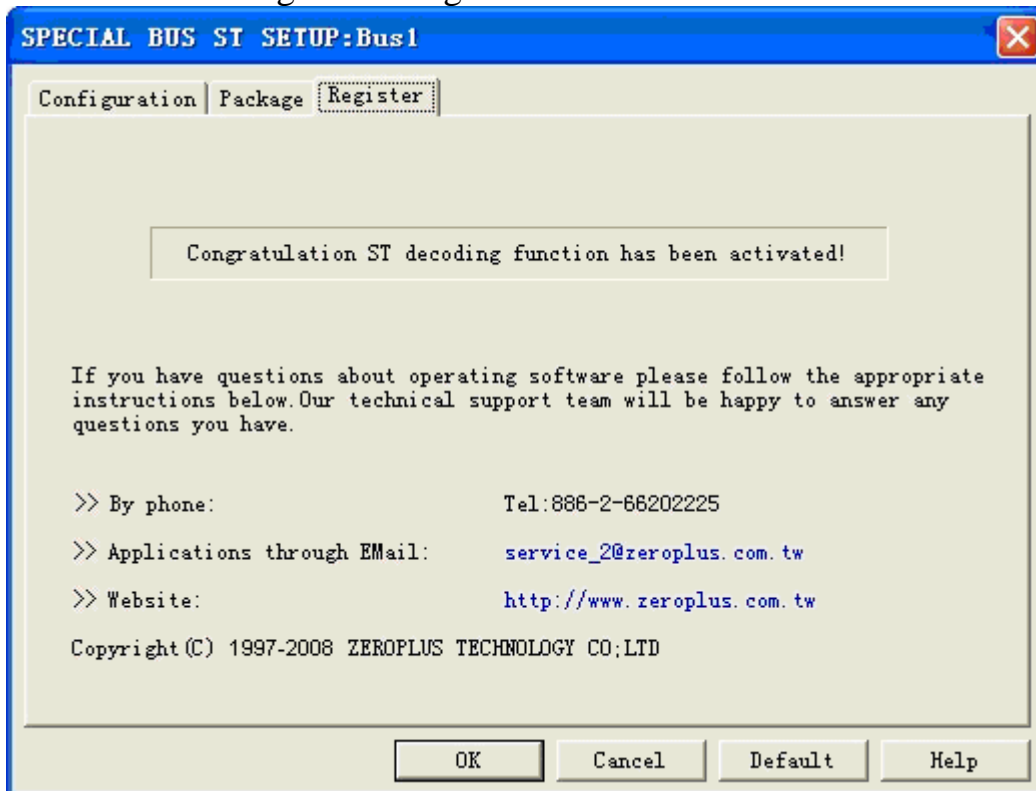
“Rising Sync, Falling Sampling” and “Falling Sync, Rising Sampling” are listed. The default is “Rising Sync, Falling Sampling”.

ST MODULE Package dialog box



In the package dialog, the colors of Data and Describe.

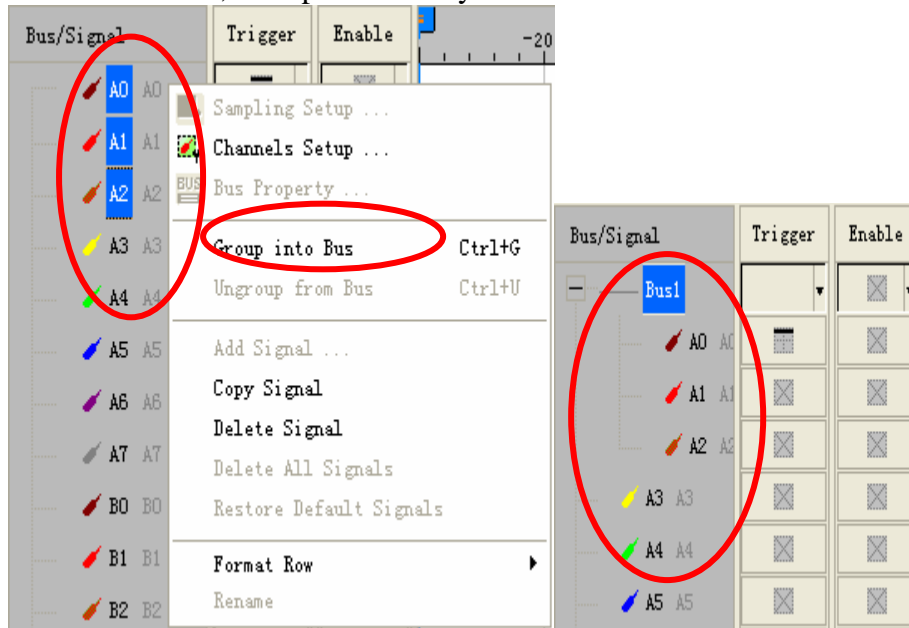
ST MODULE Register dialog box



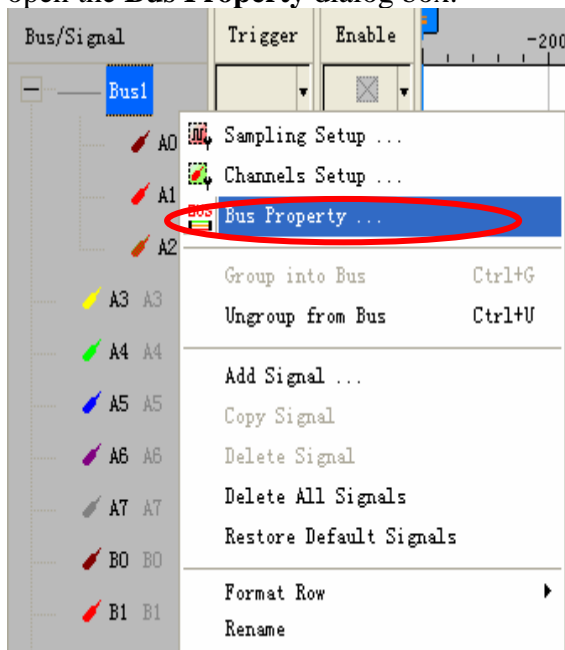
There is Zeroplus company information written. If users have question about software Operations, user can contact Zeroplus by Telephone or Email.

3 Operating Instructions

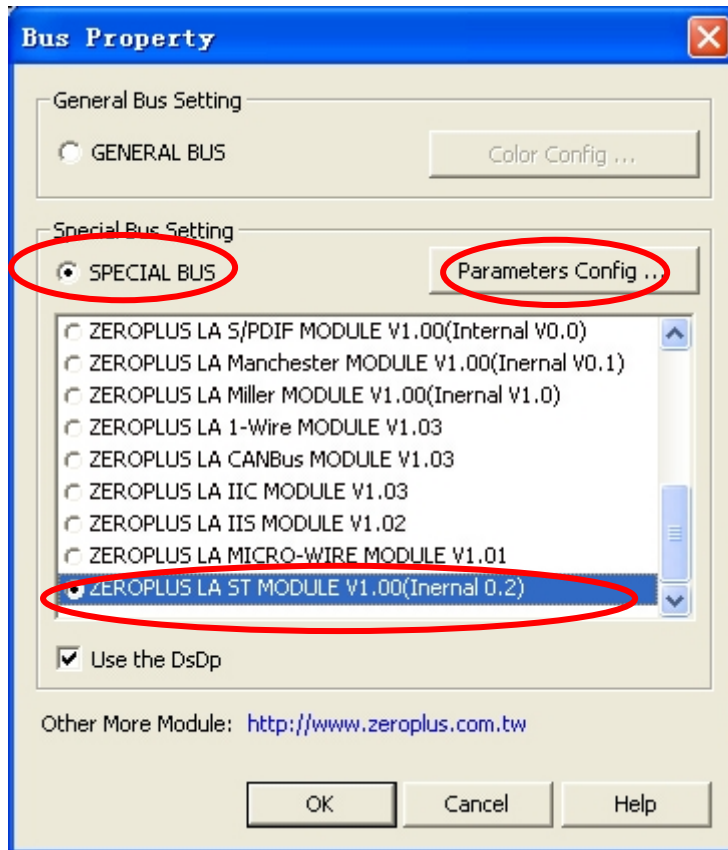
STEP 1. At first, Group the unanalyzed channels into Bus 1



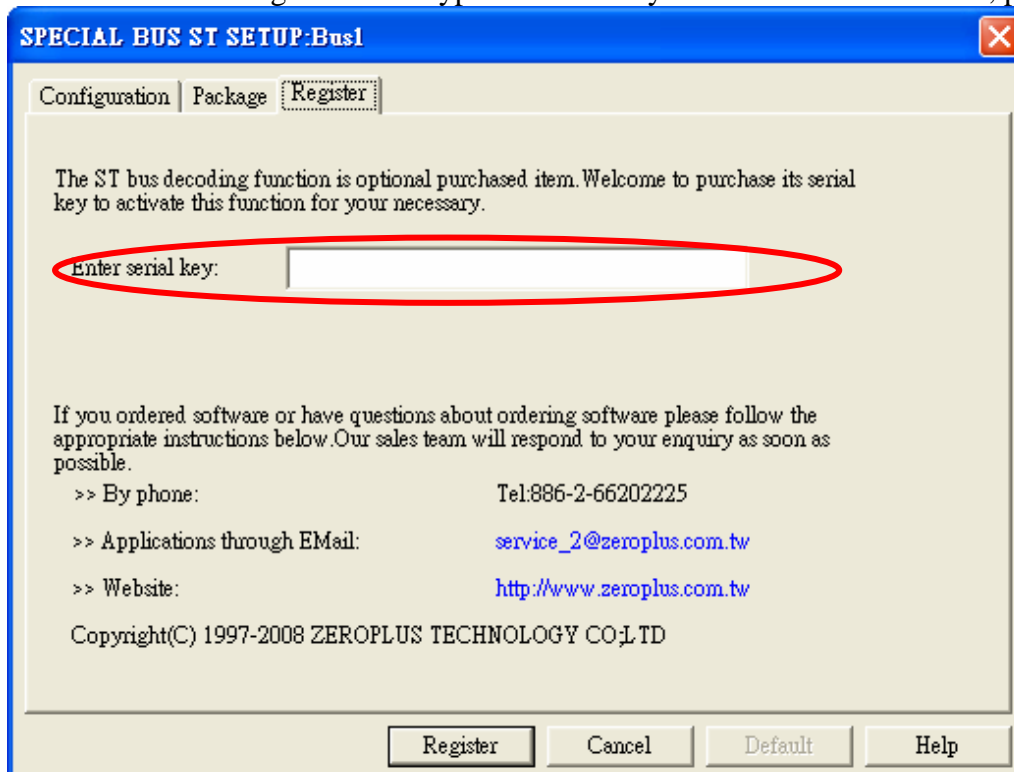
STEP 2. Select **Bus1**, then press **right** key on the mouse to list menu. Click **“Bus Property”** to open the **Bus Property** dialog box.



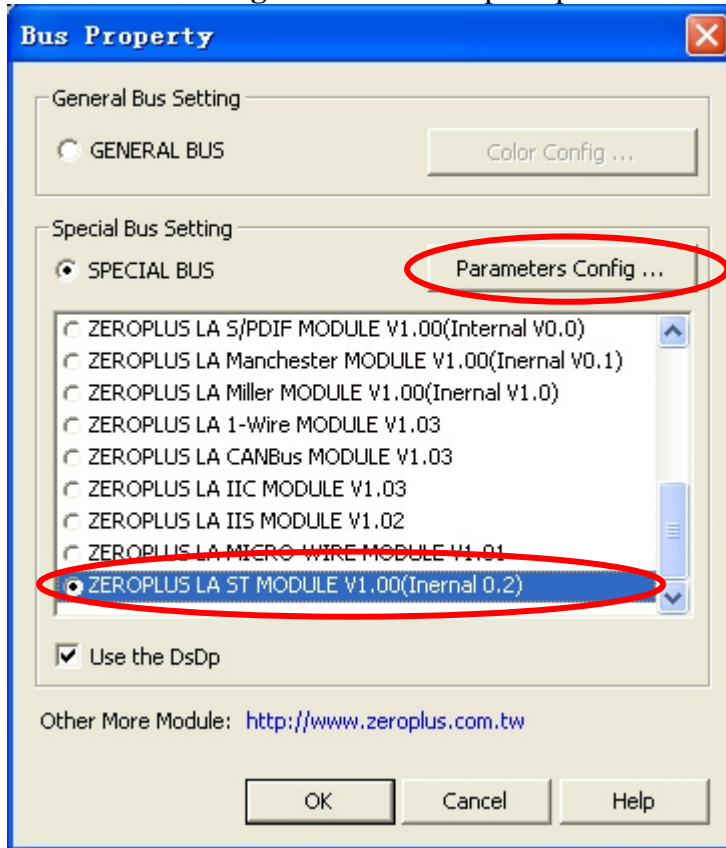
STEP 3. For Special Bus Parameter Configuration, select Special Bus, then choose **ZEROPLUS LA ST Module V1.00 (Internal 0.2)**. Next click “Parameter Configuration” to open the configure dialogue.



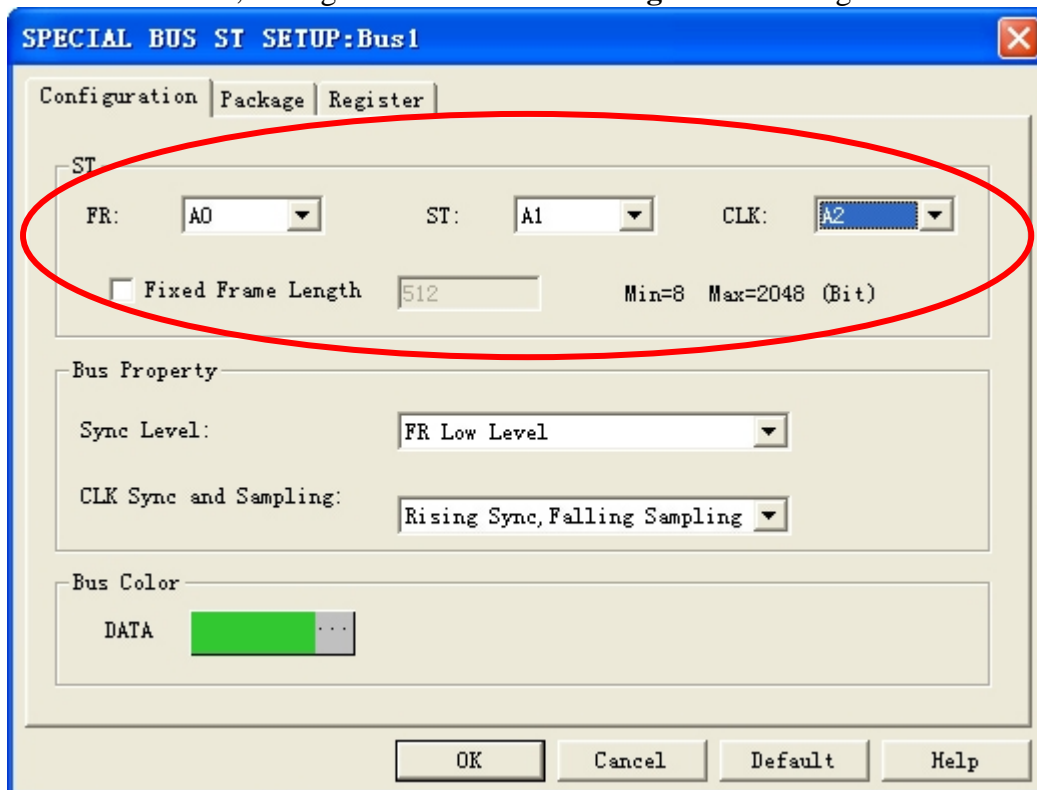
STEP 4. Press Register tab to type the serial key number of ST Bus. Then, press “Register”.



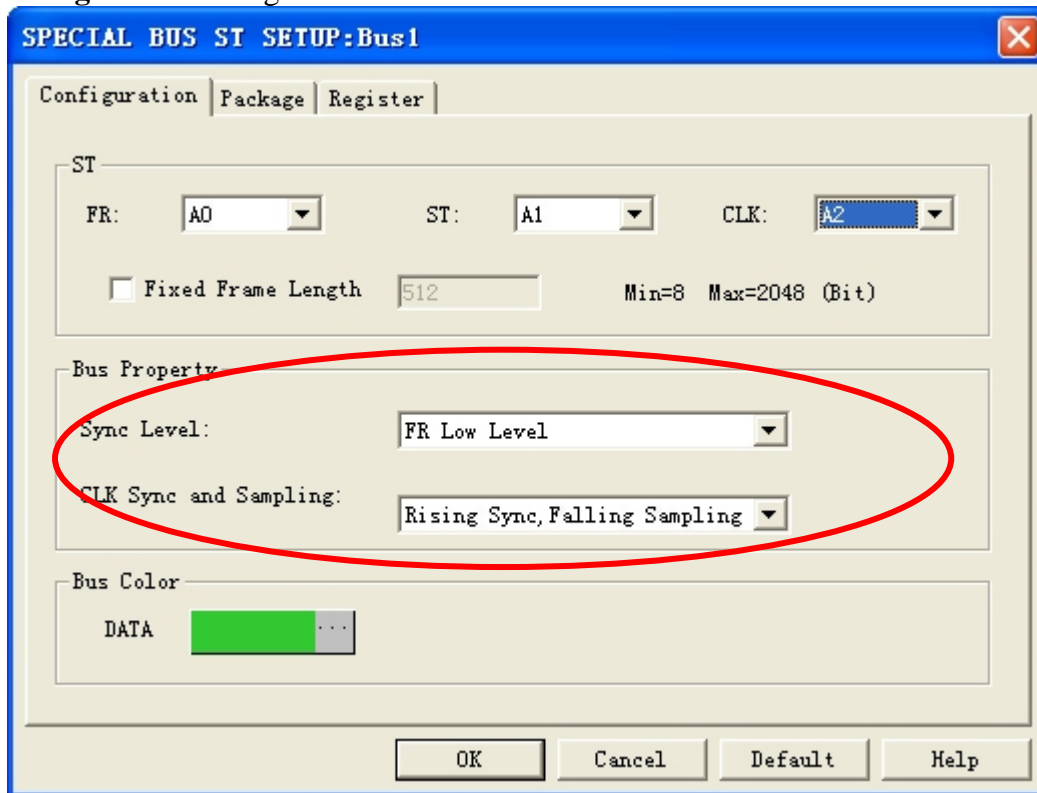
STEP 5. After pressing “OK” on Register Dialog, it turns to **Bus Property** dialogue box. Click “**Parameter Configuration**” to set up the parameter of special bus.



STEP 6. At first, setting **ST** channel in the **configuration** dialog box.

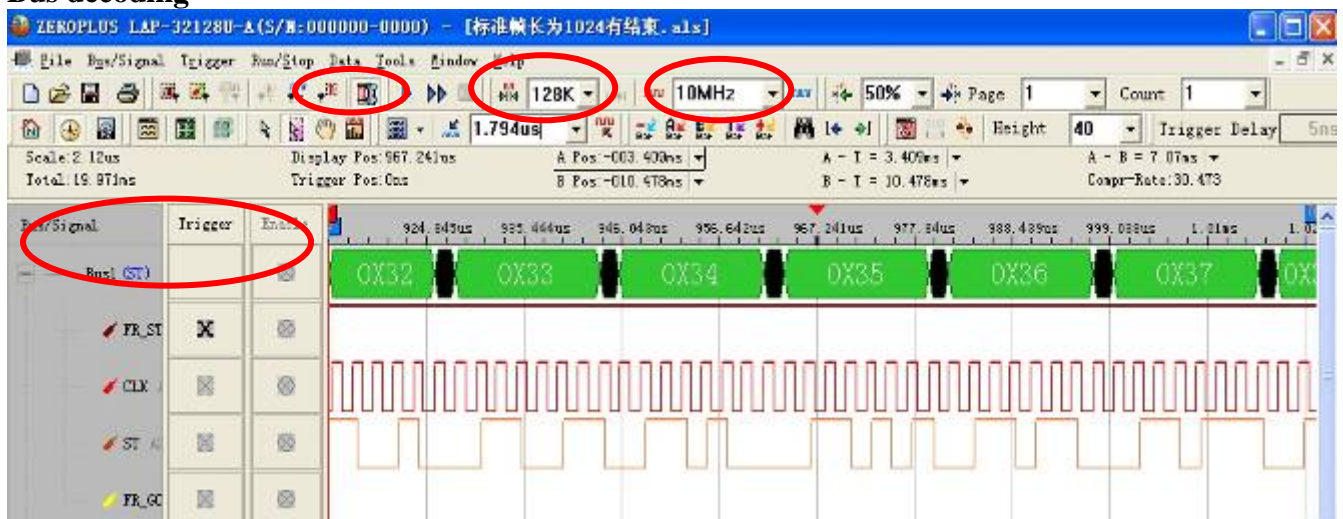


STEP 7. Next, setting **Bus Property** for Sync Level , CLK SYNC and Sampling in the **configuration** dialog box.



STEP 8. Following picture shows that the completion of the Bus decoding and packet list . The conditions are set as that random edge, Memory depth is 128K, Sampling frequency is 10MHz and the compression is activated

Bus decoding



Packet list

