



孕龍科技股份有限公司
ZeroPlus Technology Co., Ltd.

SPECIFICATION

MODEL: UNI/O Specification

PART NO : B09005

VERSION : V1.00

Approver		Check	Design
GM	PM		

Customer Confirm

* Please fax the file to
ZeroPlus Technology after
signing .

2F, NO.123, Jian Ba Rd,
Chung Ho City, Taipei Hsian, R.O.C.

Tel: +886-2-66202225
Fax: +886-2-22234362



Content

1	Software Installation.....	3
2	User Interface	7
3	Operating Instructions	9



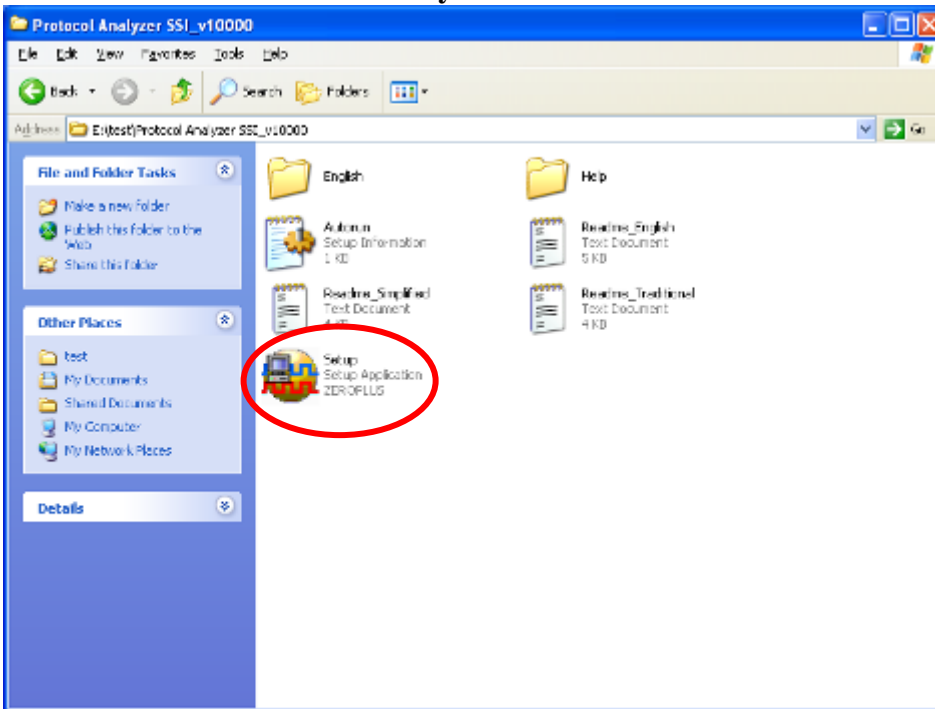
1 Software Installation

Please install the software as the following steps:

※ Remark: 1. The installation steps for all protocol analyzers are the same; you can complete the installation by following procedures. Following is an example on how to install protocol analyzer SSI.

※ Remark: 2. We won't have additional notice for you, when there is any modification of the module specification. If there is some unconformity caused by the module version upgrade, users should take the module software as the standard.

STEP 1. Install Protocol Analyzer Module.

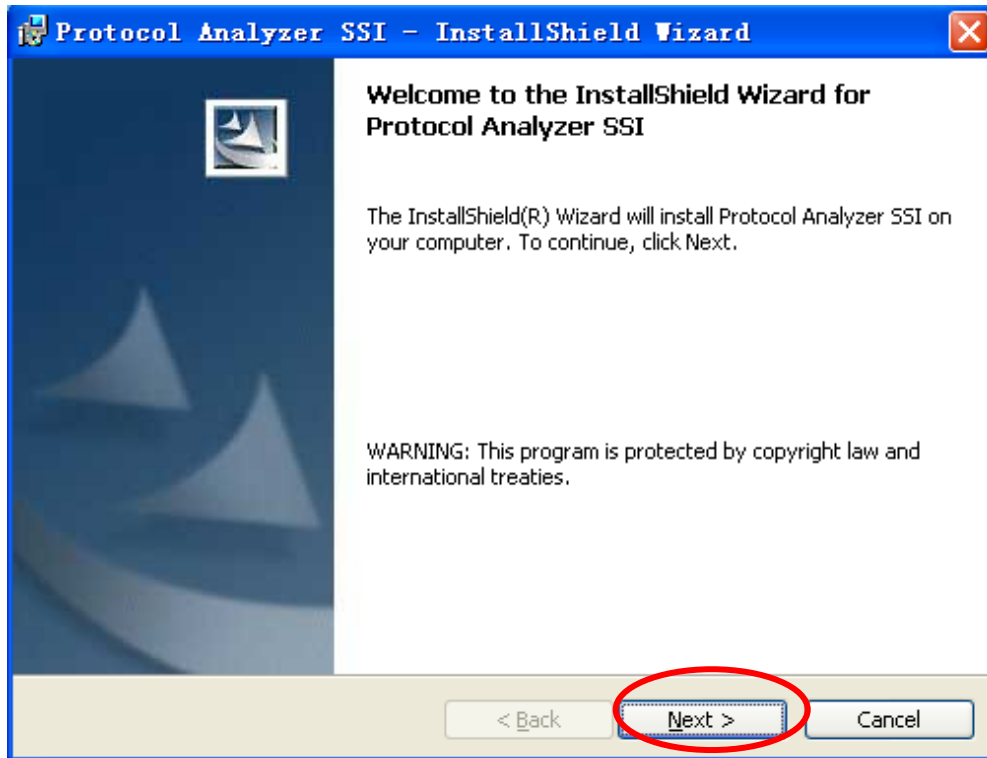


STEP 2. Click Install.

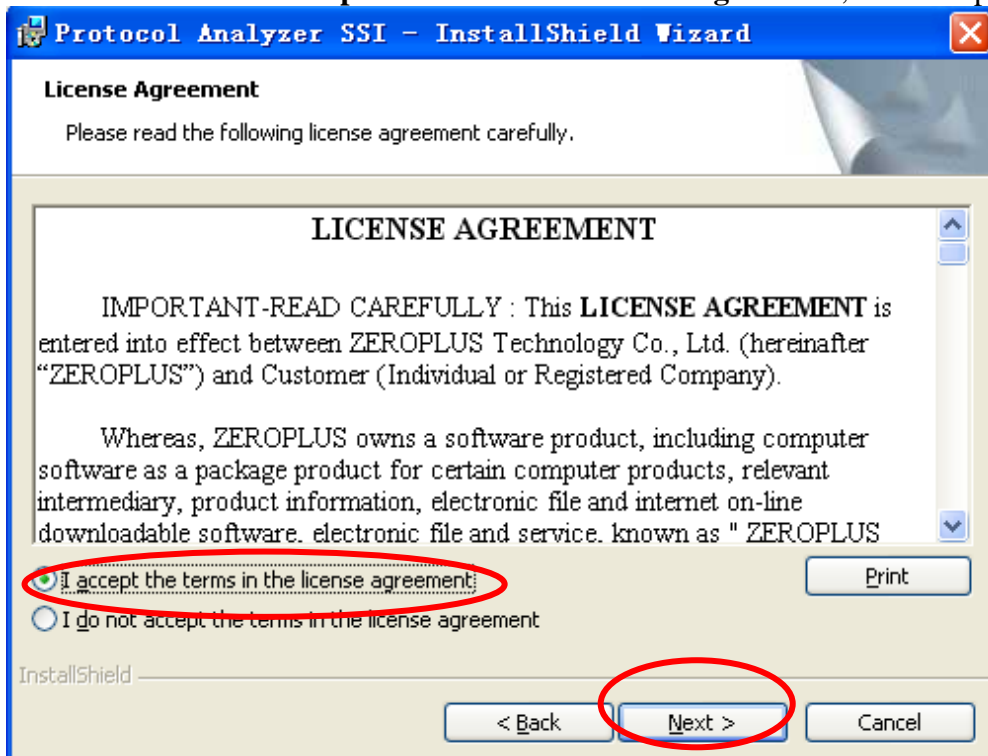




STEP 3. Click Next.



STEP 4. Select **I accept the terms in the license agreement**, and then press Next.





STEP 5. Fill in users' information in the below dialog box and click **Next**.

Protocol Analyzer SSI - InstallShield Wizard

Customer Information

Please enter your information.

User Name:
sunshine

Organization:
zeroplus

Install this application for:

Anyone who uses this computer (all users):

Only for me (sunshine)

InstallShield

< Back **Next >** Cancel

STEP 6. First, select **Complete** and then click **Next**.

Protocol Analyzer SSI - InstallShield Wizard

Setup Type

Choose the setup type that best suits your needs.

Please select a setup type.

Complete
All program features will be installed. (Requires the most disk space.)

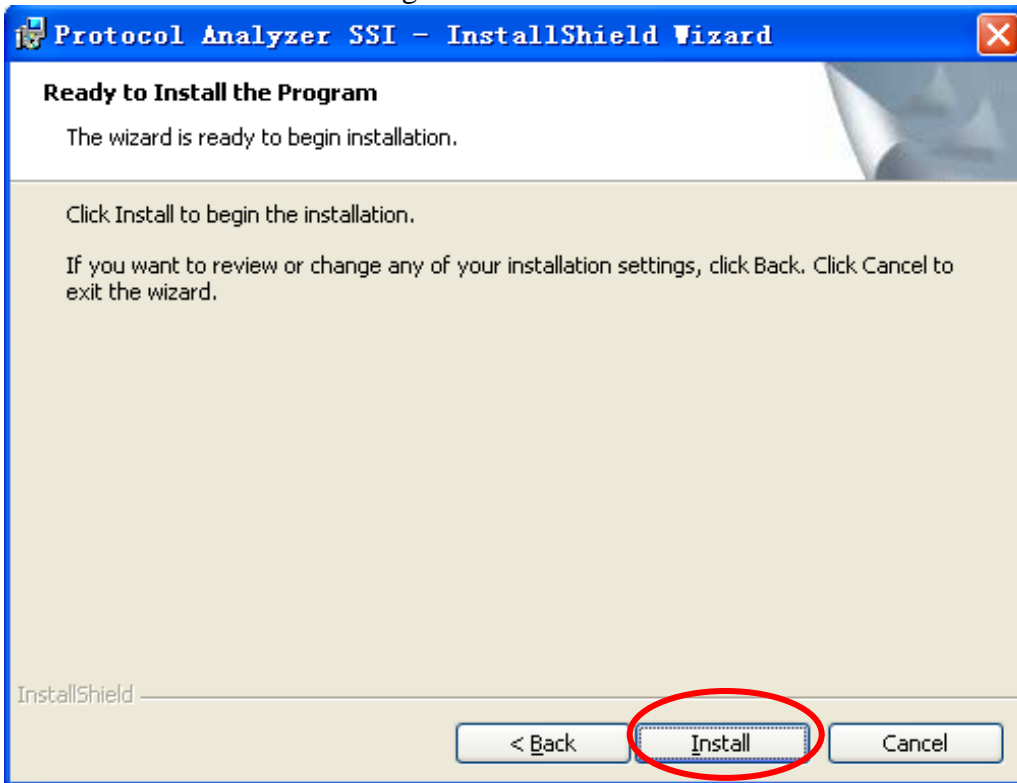
Custom
Choose which program features you want installed and where they will be installed. Recommended for advanced users.

InstallShield

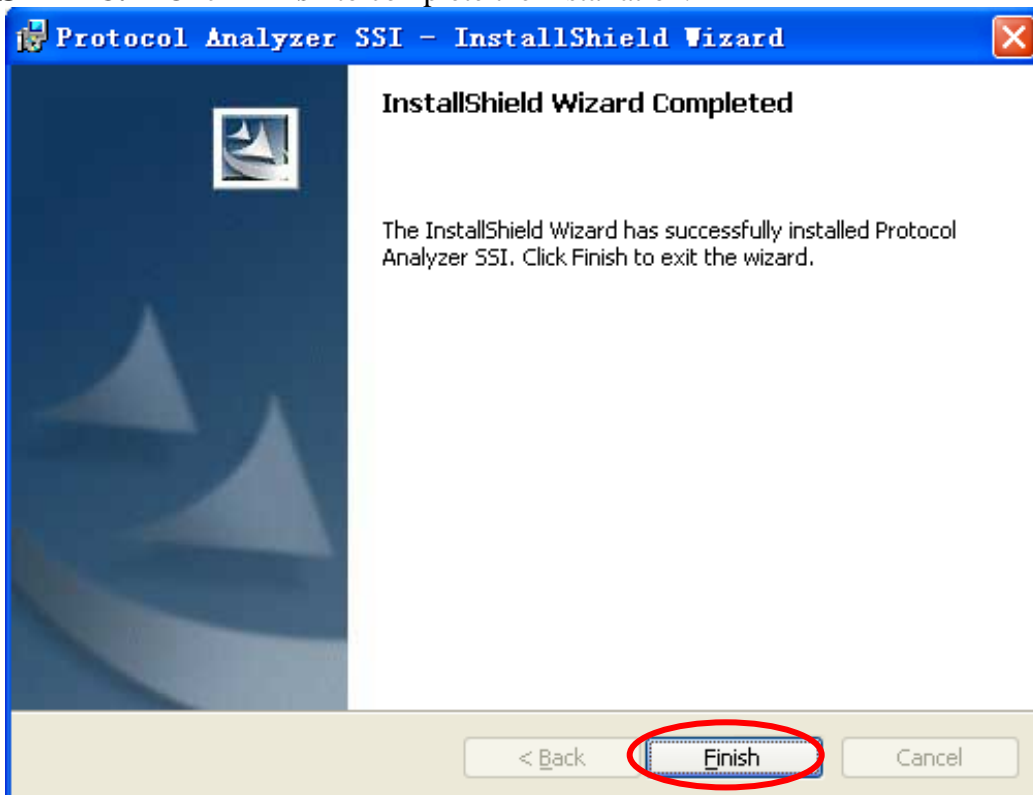
< Back **Next >** Cancel



STEP 7. Click **Install** to begin the installation.



STEP 8. Click **Finish** to complete the installation.

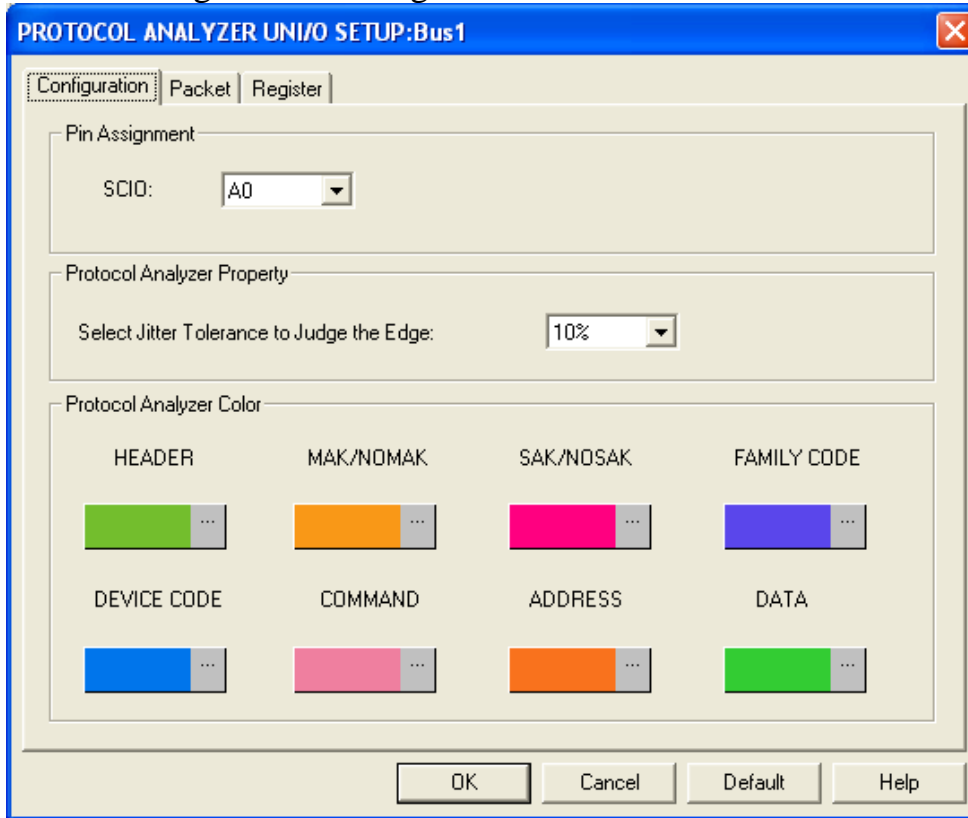




2 User Interface

In the configuration, please refer to the below images to select options of setting UNI/O module.

UNI/O Configuration Dialog Box



Pin Assignment:

SCIO: It is the signal channel of the UNI/O, and the default is A0.

Protocol Analyzer Property:

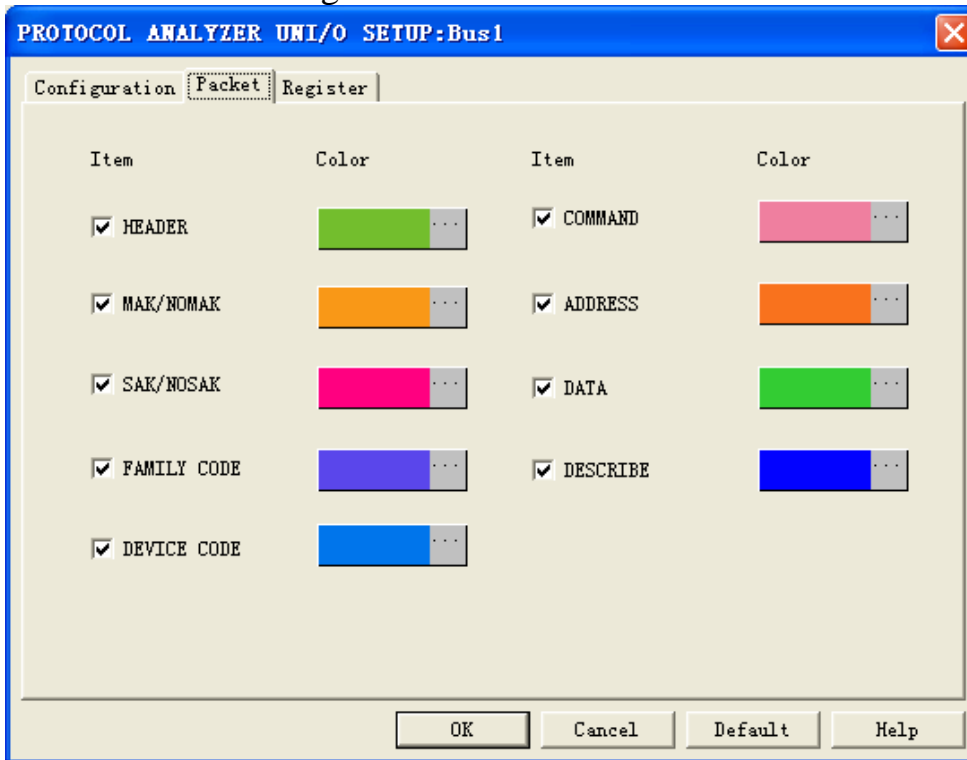
Select Jitter Tolerance to Judge the Edge: Set the Offset Range of the Rising Edge or Falling Edge which happens at the middle Bit of the Manchester decoding. The default is “10%”; it means that it will judge the Edge in the range of 40% and 60% of the Bit. Users can choose the selectable value from the pull-down menu, which consists of 5%, 10% and 15%.

Protocol Analyzer Color:

The **Protocol Analyzer Color** can be varied by users.

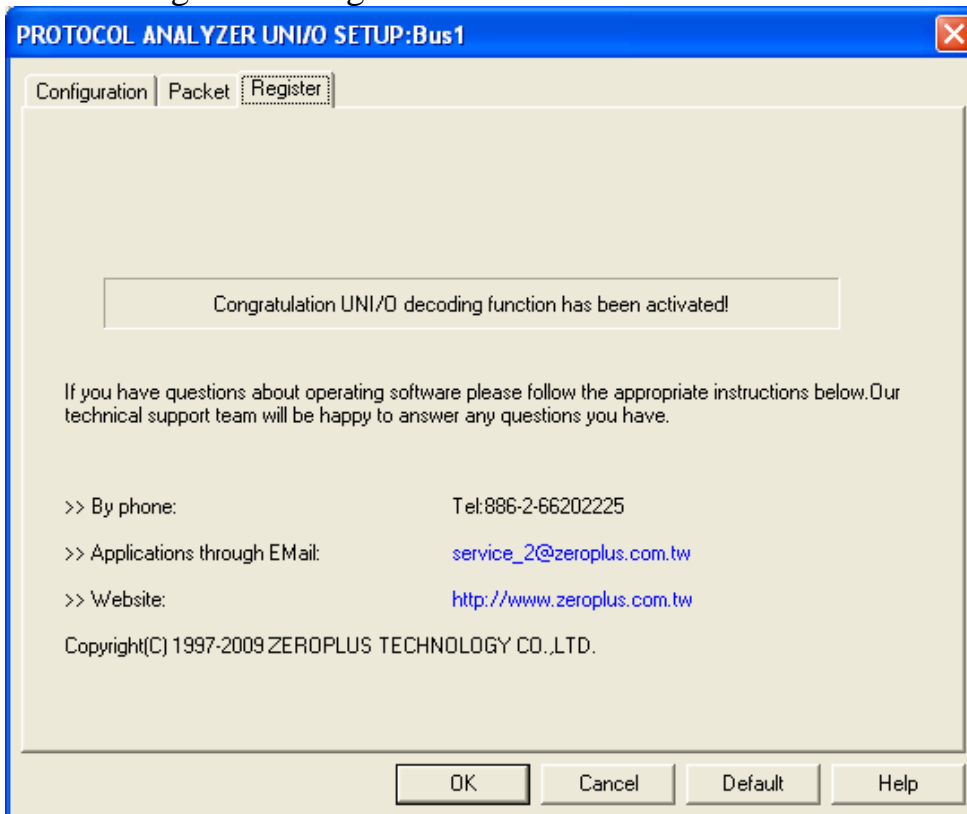


UNI/O Packet Dialog Box



In the packet part, users can set the items and colors as users' requirements.

UNI/O Register Dialog Box

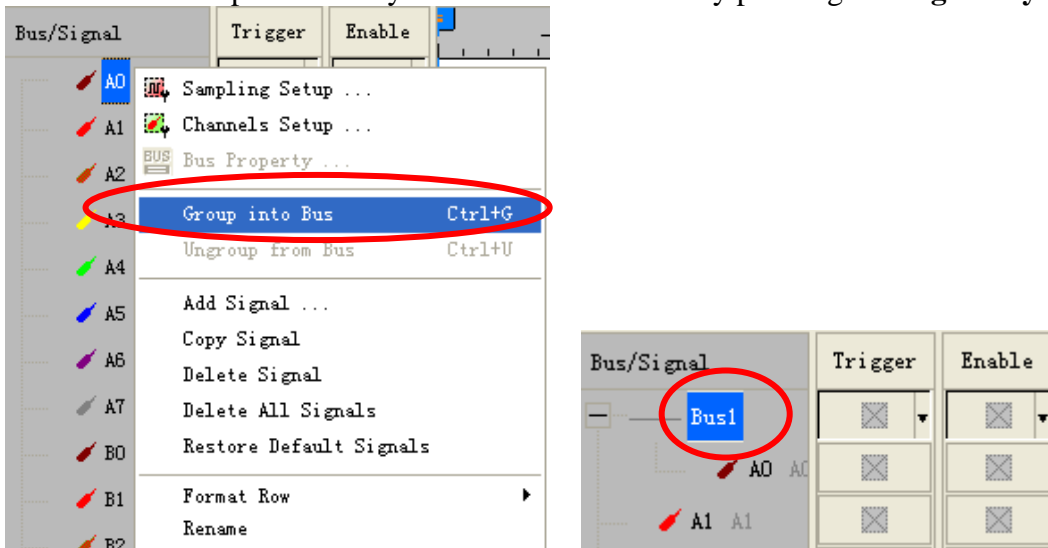


There is written ZeroPlus company information. If you have any questions about software operations, you can contact ZeroPlus by Telephone or Email.

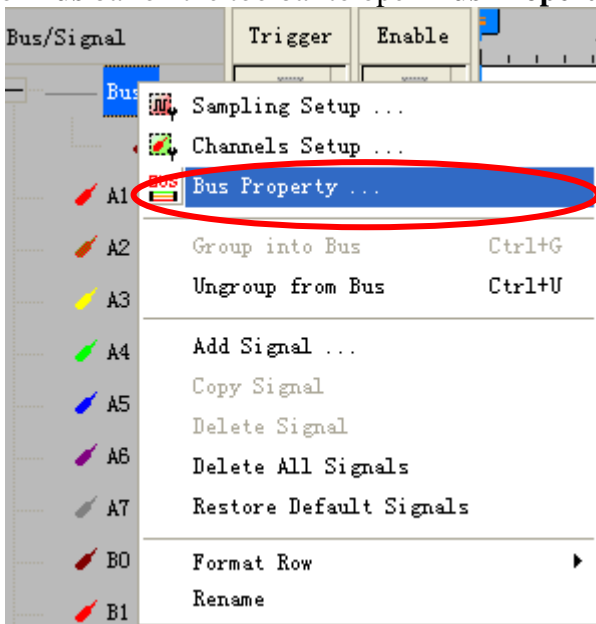


3 Operating Instructions

STEP 1. Group the unanalyzed channel into **Bus1** by pressing the **Right Key** on the mouse.

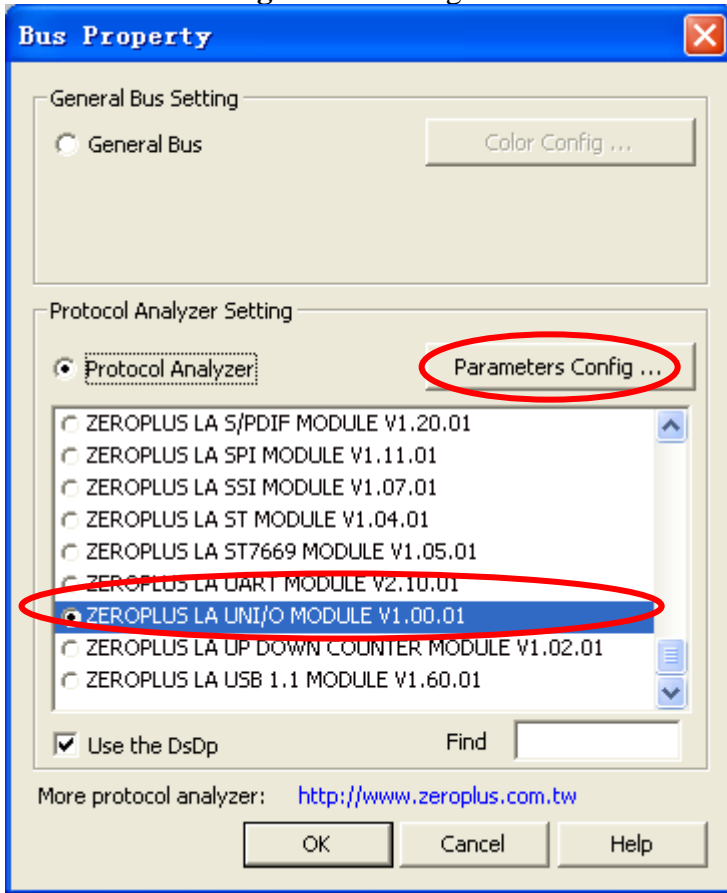


STEP 2. Select **Bus1**, and press **Right Key** on the mouse to list the menu, then press **Bus Property** or **Bus** bar on the toolbar to open **Bus Property** dialog box.

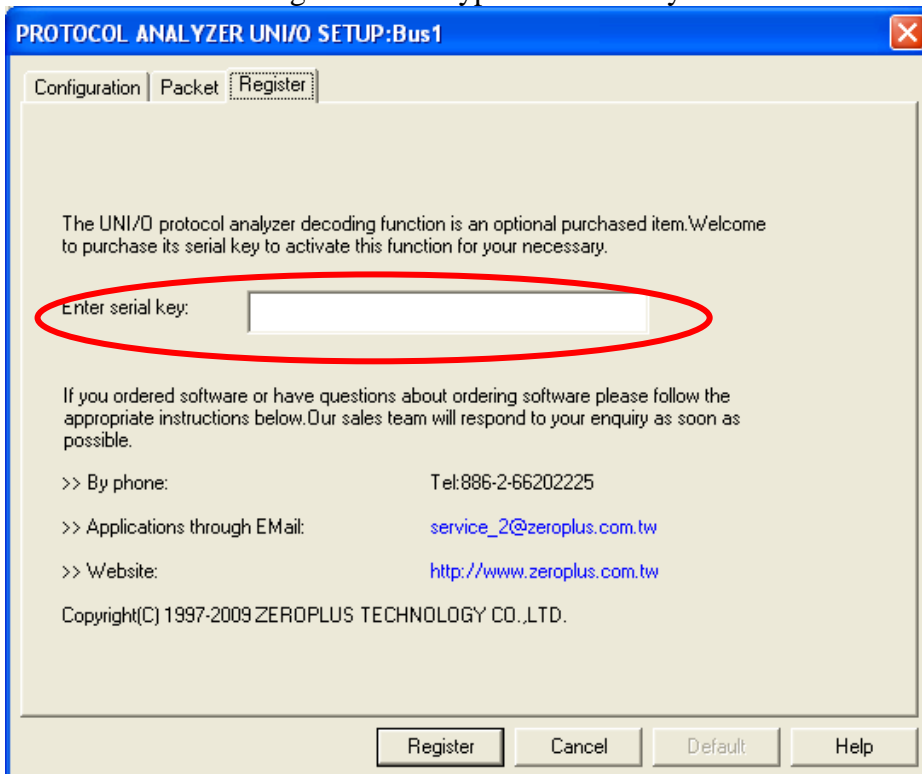




STEP 3. For Protocol Analyzer UNI/O Parameters Configuration, select Protocol Analyzer, and then choose **ZEROPLUS LA UNI/O MODULE V1.00.01**. Next click **Parameters Configuration** to open **Parameters Configuration** dialog box.

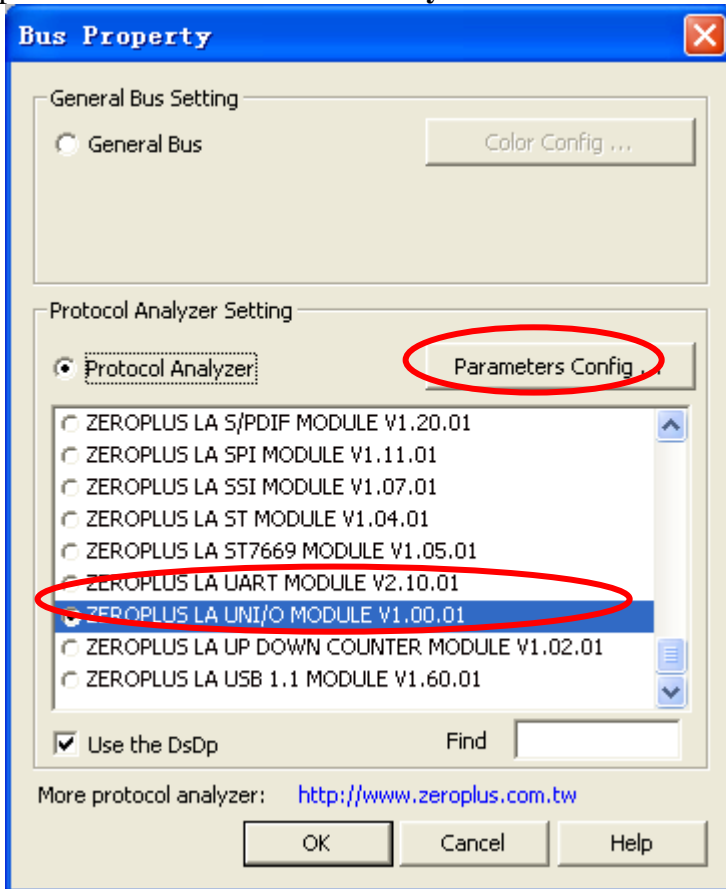


STEP 4. Press Register tab to type the serial key number of UNI/O. Then, press **Register**.

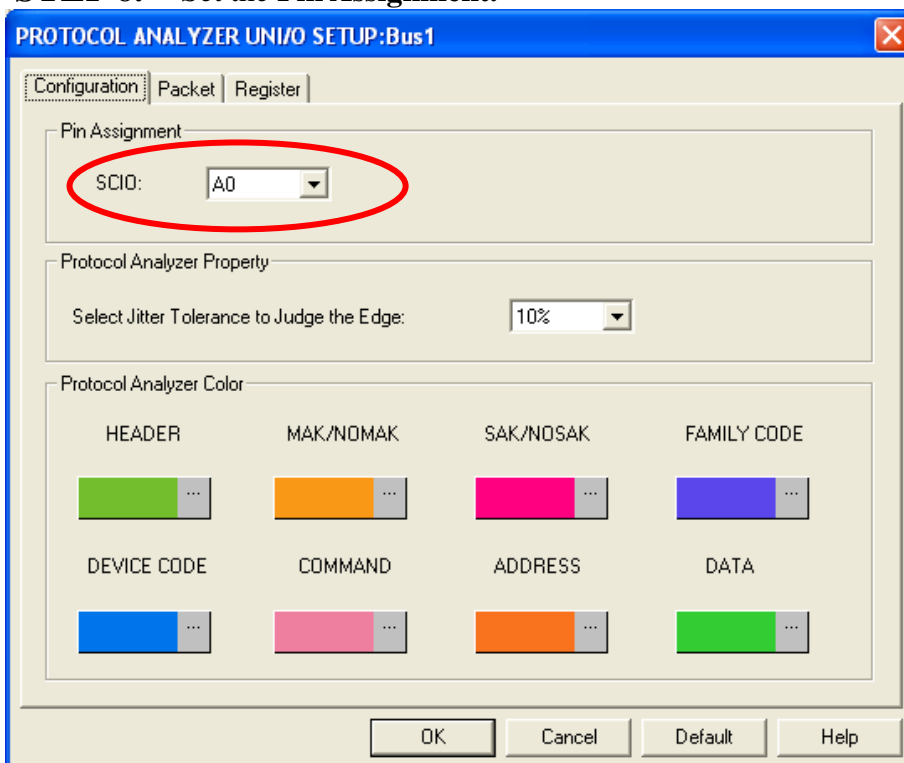




STEP 5. Click **Parameters Configuration** again, and open the configuration dialog box to set the parameters for the **Protocol Analyzer UNI/O**.

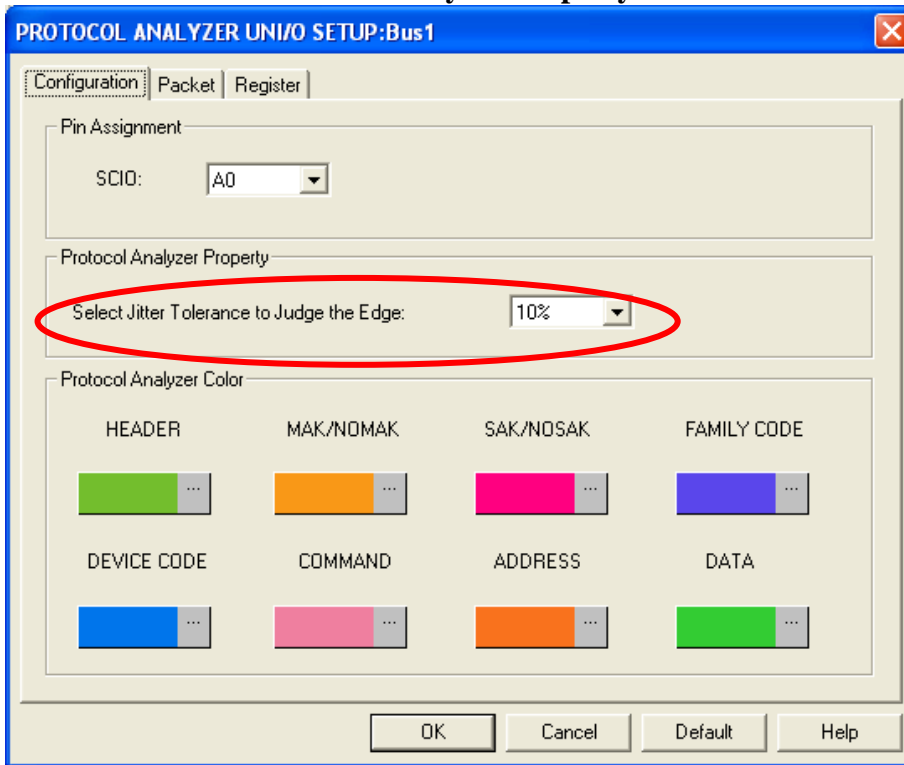


STEP 6. Set the **Pin Assignment**.





STEP 7. Set the Protocol Analyzer Property.



STEP 8. Set the Protocol Analyzer Color.

