



孕龍科技股份有限公司
ZeroPlus Technology Co., Ltd.

SPECIFICATION

MODEL: B09025-LAP-WTB-M

PART NO: _____

VERSION: V1.00

Approver		Check	Design
GM	PM		

Customer Confirm

*Please fax the file to ZeroPlus Technology after signing.

2F, NO.123, Jian Ba Rd,
Chung Ho City, Taipei Hsian, R.O.C.

Tel:+886-2-66202225
Fax:+886-2-22234362



Content

1	Software Installation.....	3
2	User Interface.....	7
3	Operating Instructions	10



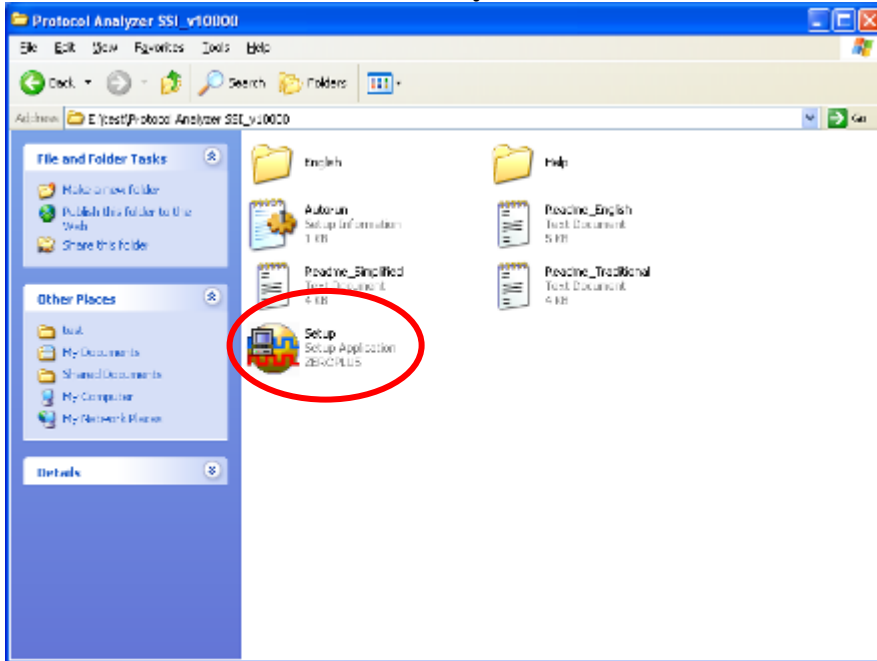
1 Software Installation

Please install the software as the following steps:

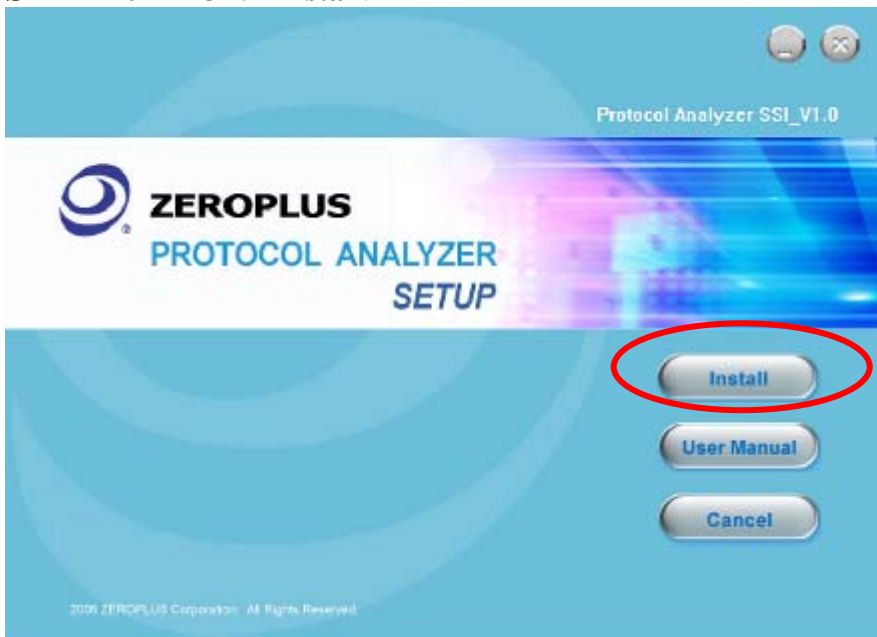
※ Remark: 1.The installation steps for all protocol analyzers are the same; you can complete the installation by following procedures. Following is an example on how to install protocol analyzer SSI.

※ Remark: 2. We won't have additional notice for you, when there is any modification of the module specification. If there is some unconformity caused by the module version upgrade, users should take the module software as the standard.

STEP 1. Install Protocol Analyzer Module.

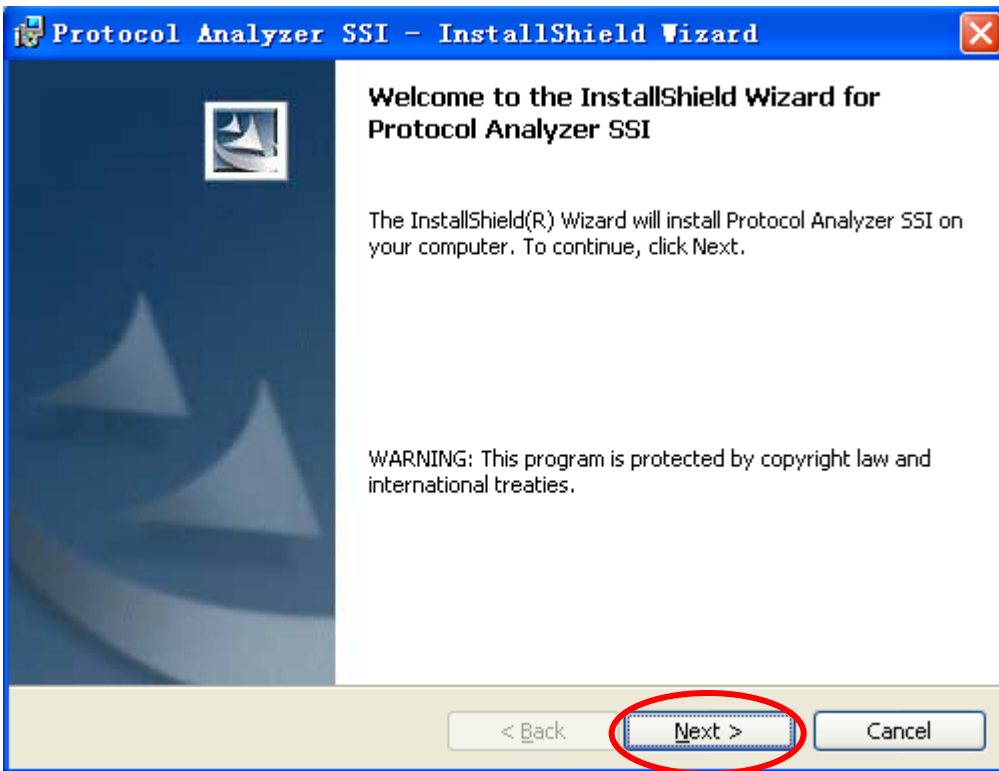


STEP 2. Click Install.

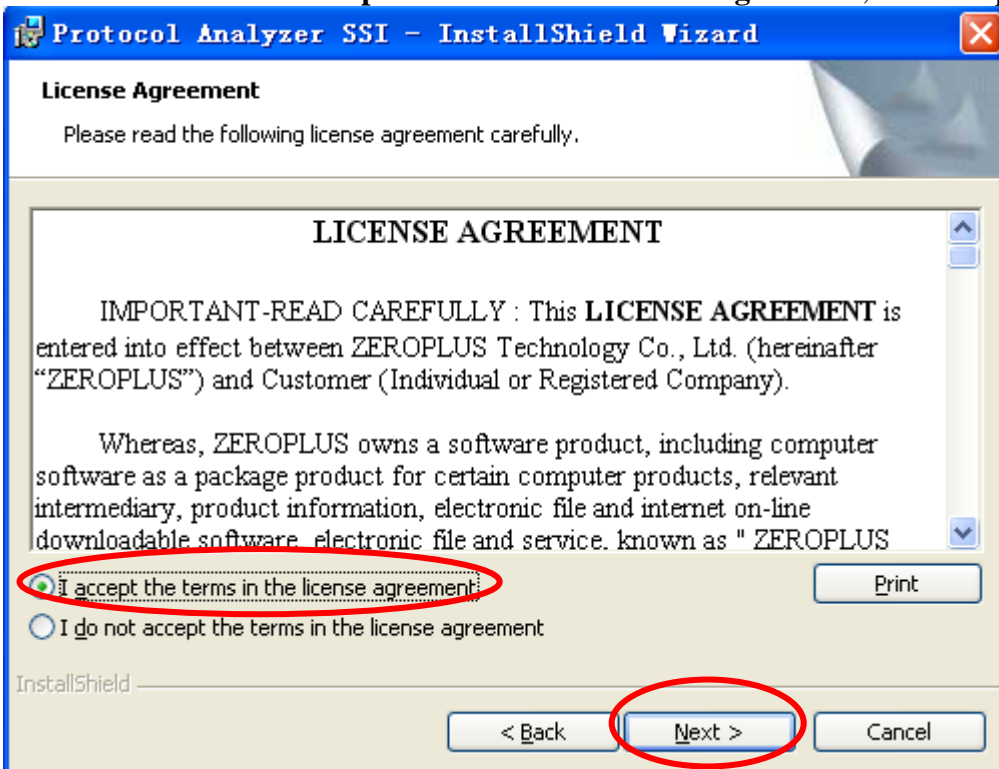




STEP 3. Click Next.

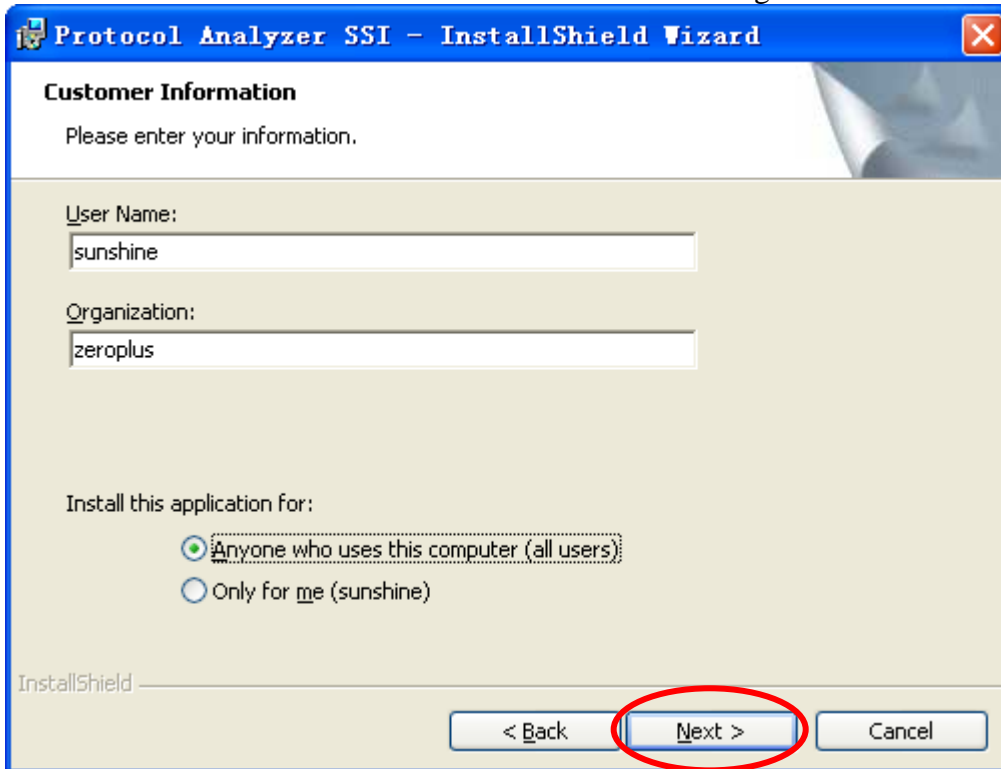


STEP 4. Select **I accept the terms in the license agreement**, and then press **Next**.

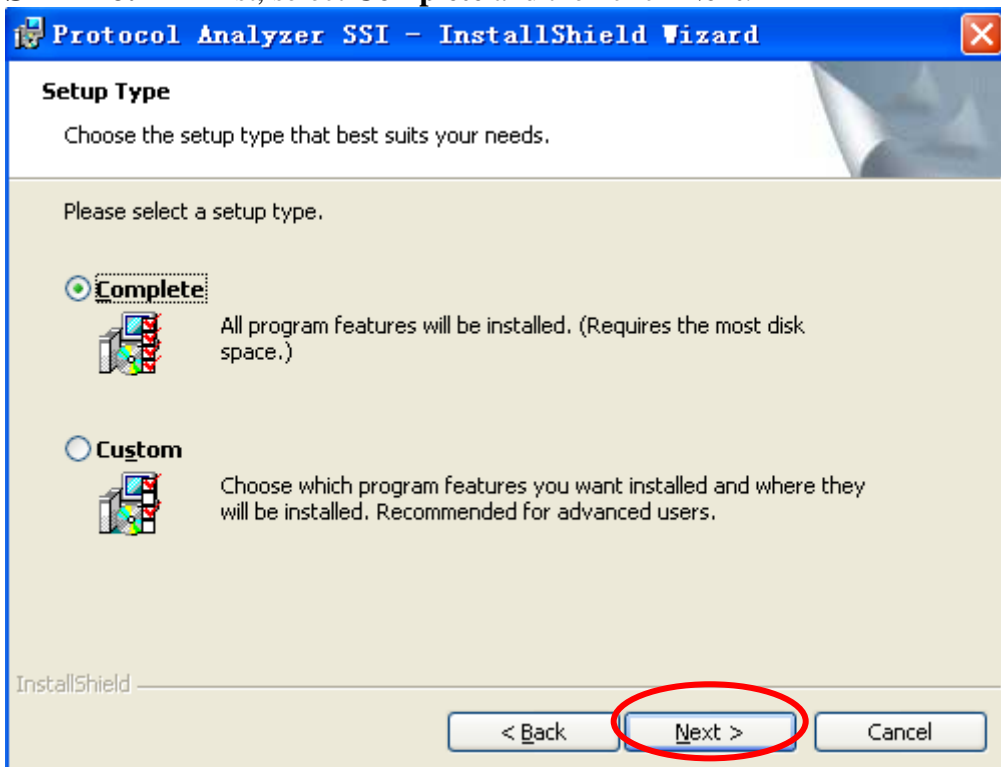




STEP 5. Fill in users' information in the below dialog box and click **Next**.

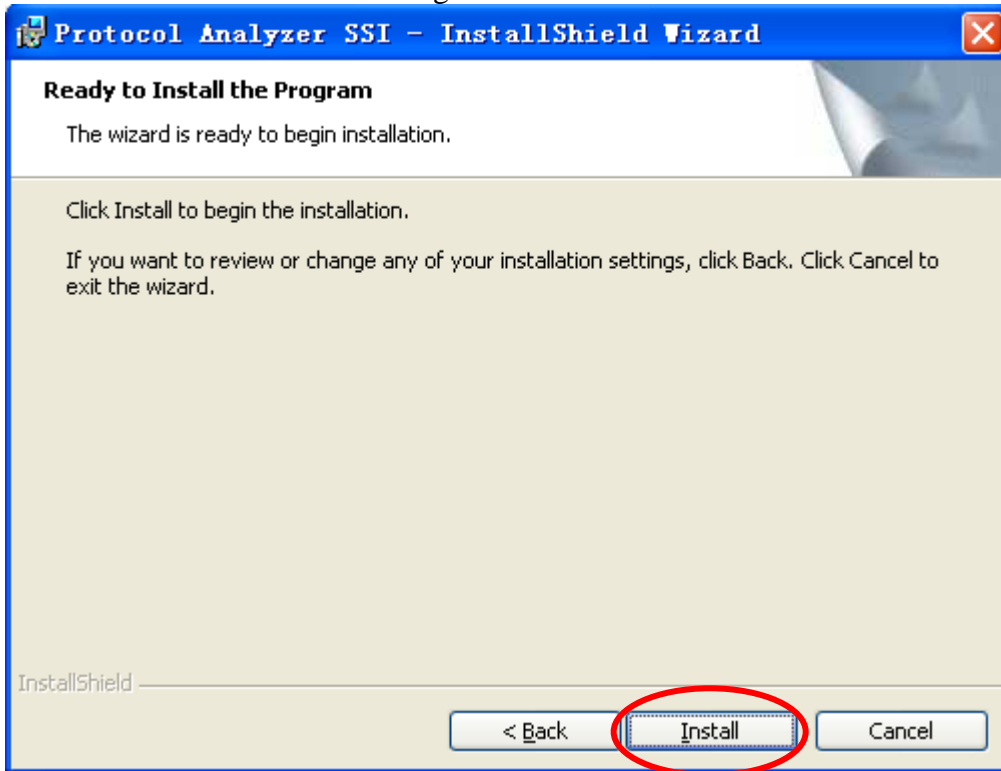


STEP 6. First, select **Complete** and then click **Next**.

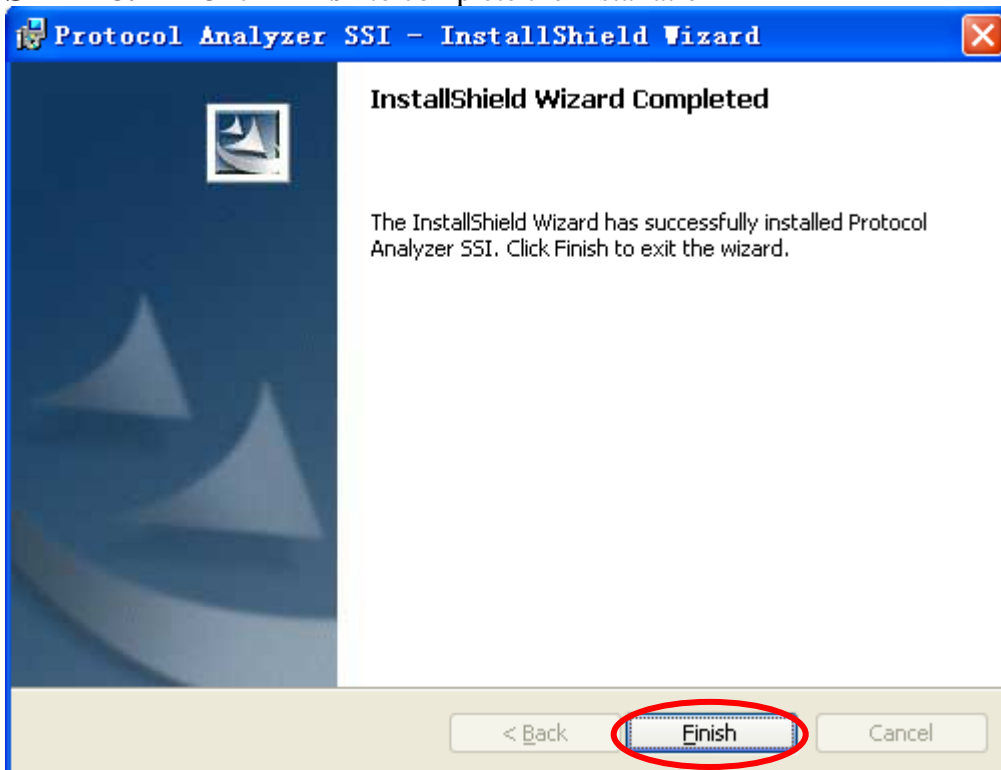




STEP 7. Click **Install** to begin the installation.



STEP 8. Click **Finish** to complete the installation

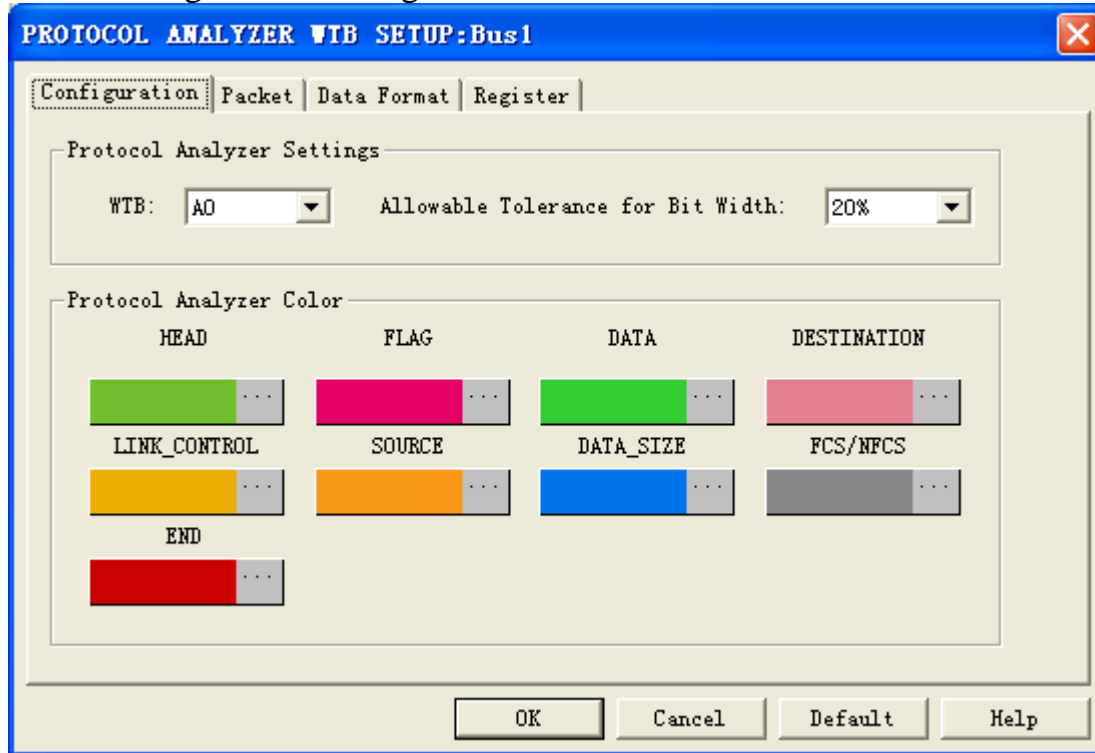




2 User Interface

In the configuration, please refer to the below images to select options of setting **WTB** module.

WTB Configuration Dialog Box



Protocol Analyzer Settings:

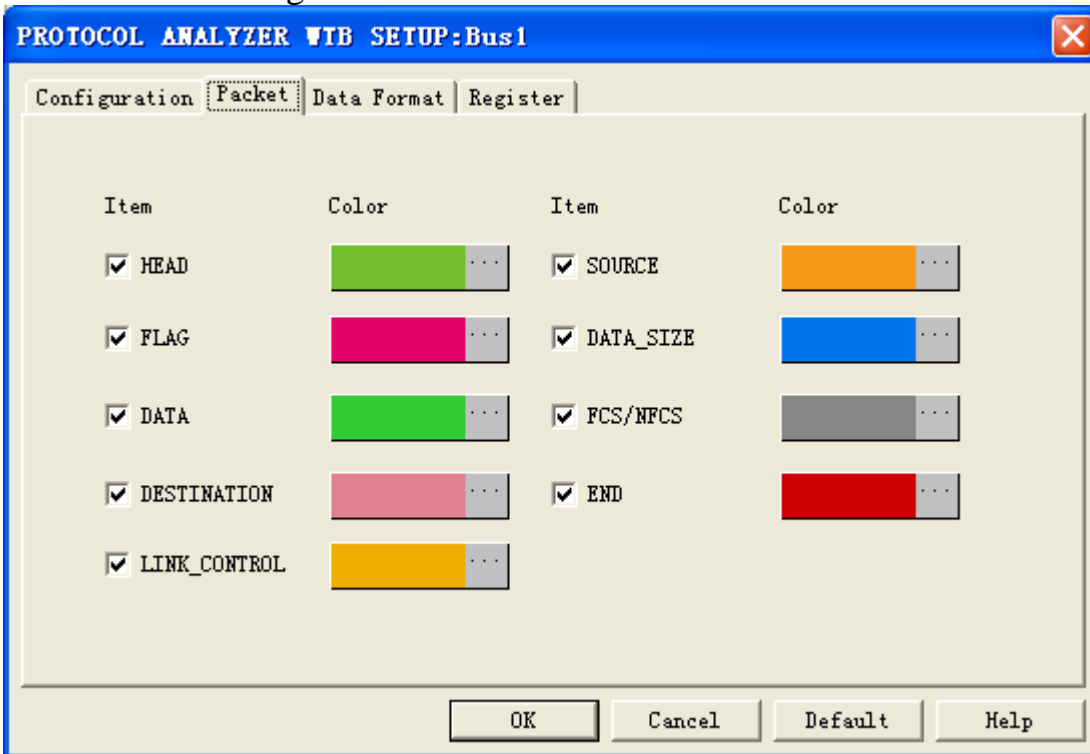
WTB: It only needs one channel to set the Protocol Analyzer.

Allowable Tolerance for Bit Width: It is the Allowable Tolerance for a bit Time Width; the default is 20%. Specifically, the standard Bit Width of WTB is 1us, and the 20% tolerance means that the Bit Width can be between 0.8us and 1.2us. Further, there are other three values to be selected from the pull-down menu, namely, 5%, 10%, 30%.

Protocol Analyzer Color: Set the displayed color for every packet in the Protocol Analyzer.

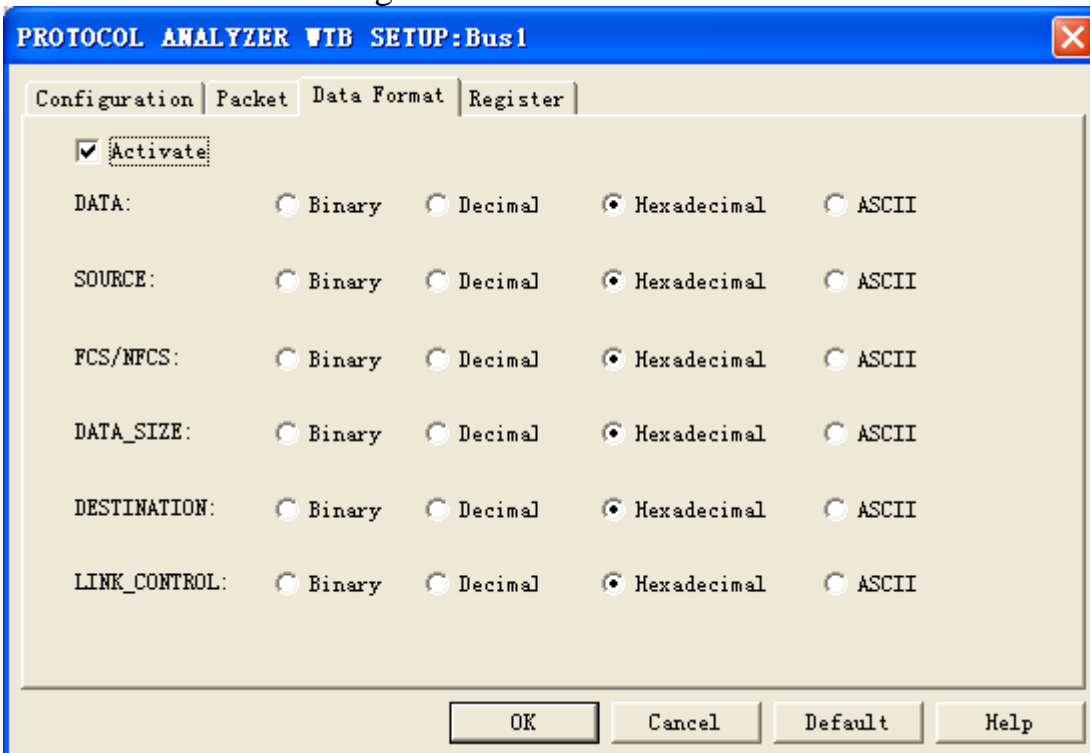


WTB Packet Dialog Box



In the packet part, users can set the items and colors as users' requirements.

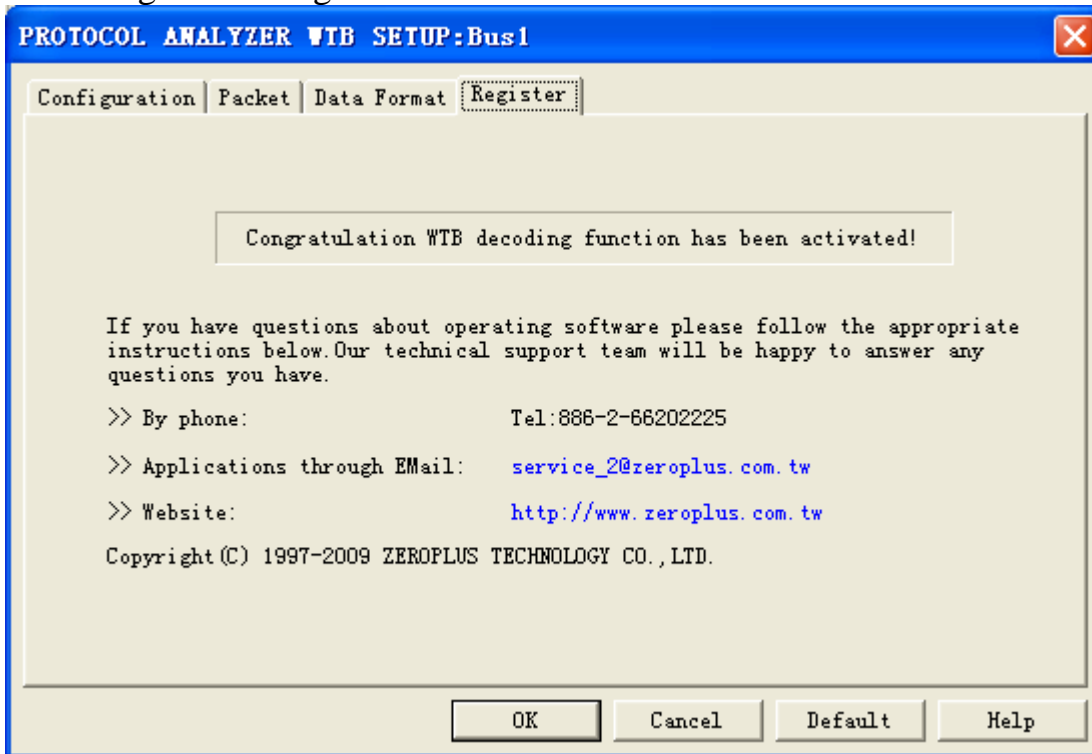
WTB Data Format Dialog Box



Users can set the Data Format of the DATA, SOURCE, FCS/NFCS, DATA_SIZE, DESTINATION and LINK_CONTROL as their requirements. When selecting the option, **Activate**, the data formats are decided by the settings in the Protocol Analyzer; when not selecting the option, **Activate**, the data formats are decided by the settings in the main program.



WTB Register Dialog Box

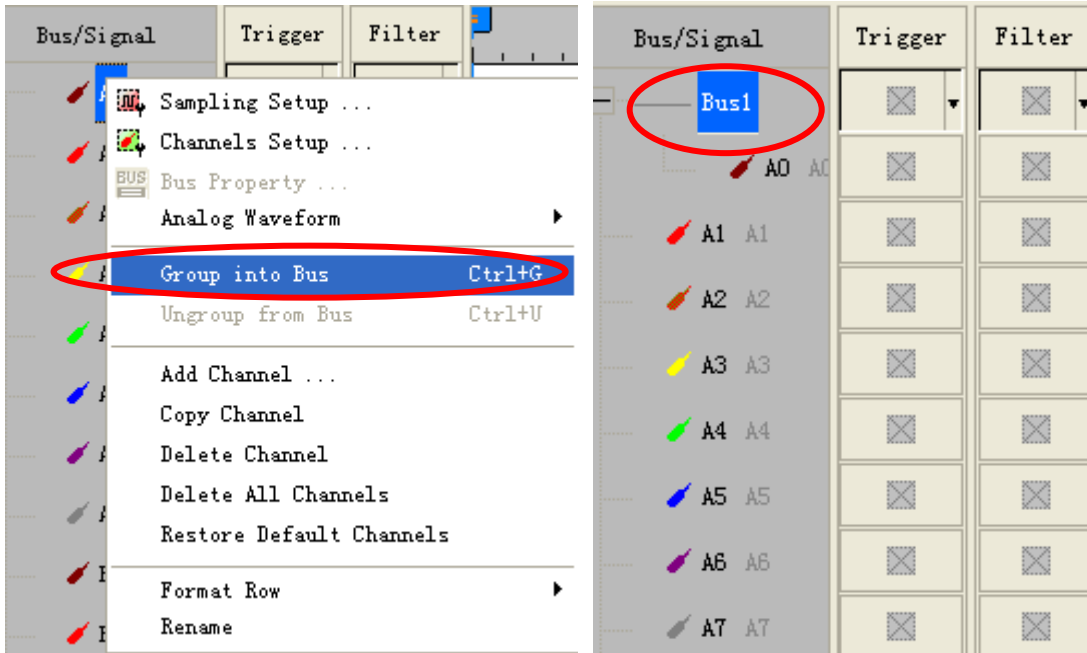


There is written ZeroPlus company information. If you have any questions about software operations, you can contact ZeroPlus by Telephone or Email.

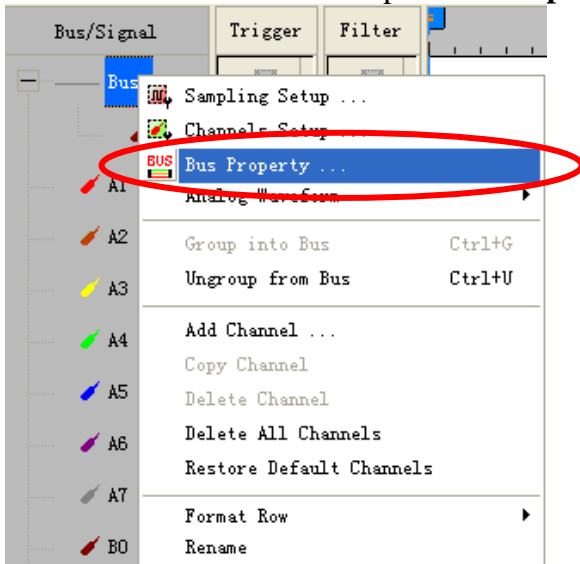


3 Operating Instructions

STEP 1. Group the unanalyzed channels into **Bus1** by pressing the **Right Key** on the mouse. .

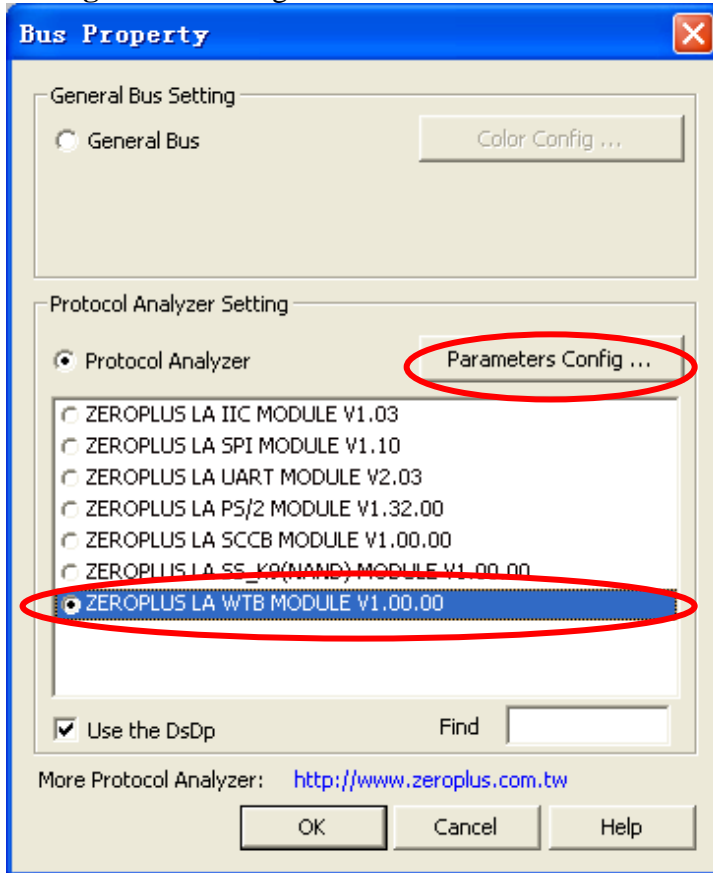


STEP 2. Select **Bus1**, and press **Right Key** on the mouse to list the menu, then press **Bus Property** or **Bus bar** on the toolbar to open **Bus Property** dialog box.

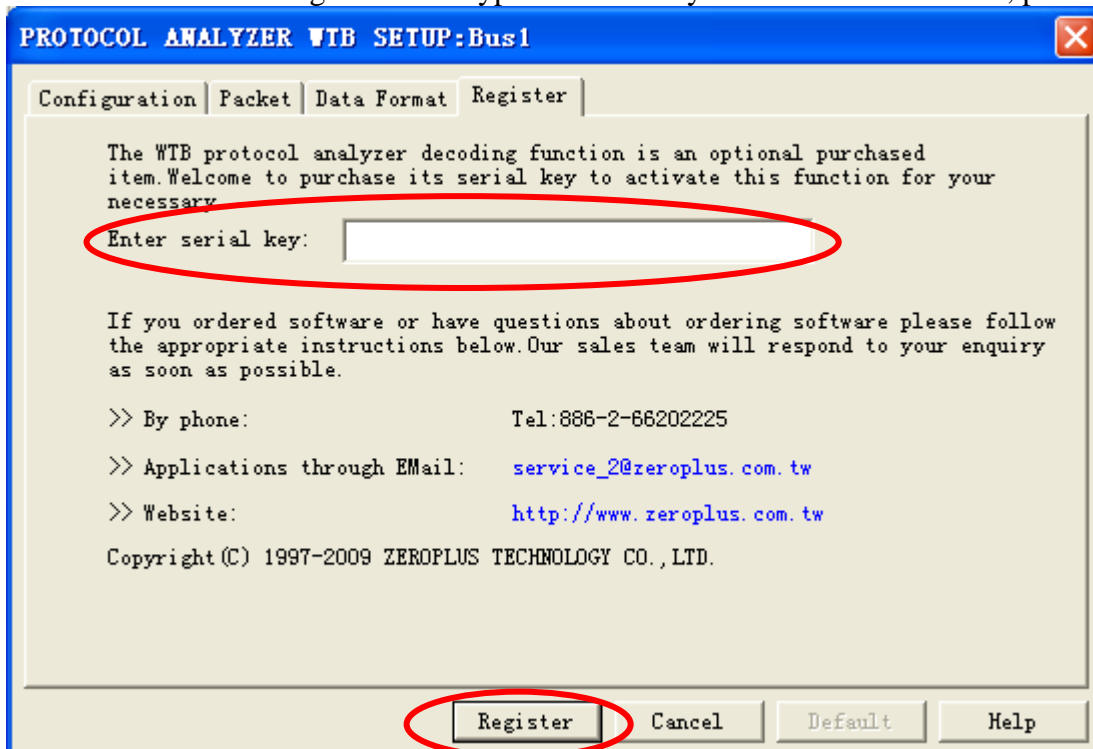




STEP 3. For Protocol Analyzer WTB Parameters Configuration, select Protocol Analyzer, and then choose **ZEROPLUS LA WTB MODULE V1.00.00**. Next click **Parameters Configuration** to open **Configuration** dialog box.

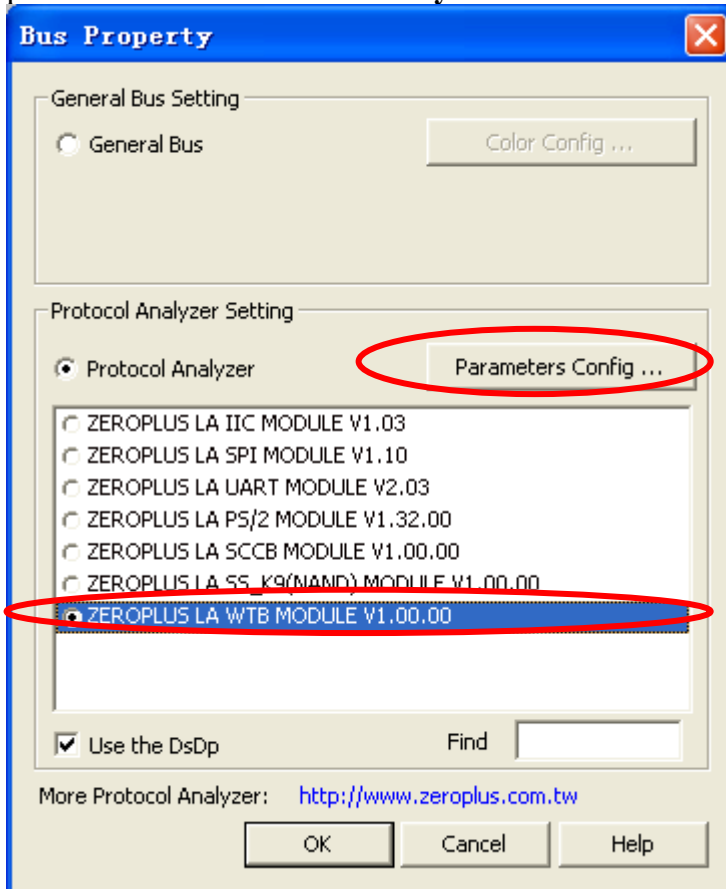


STEP 4. Press Register tab to type the serial key number of WTB. Then, press **Register**.

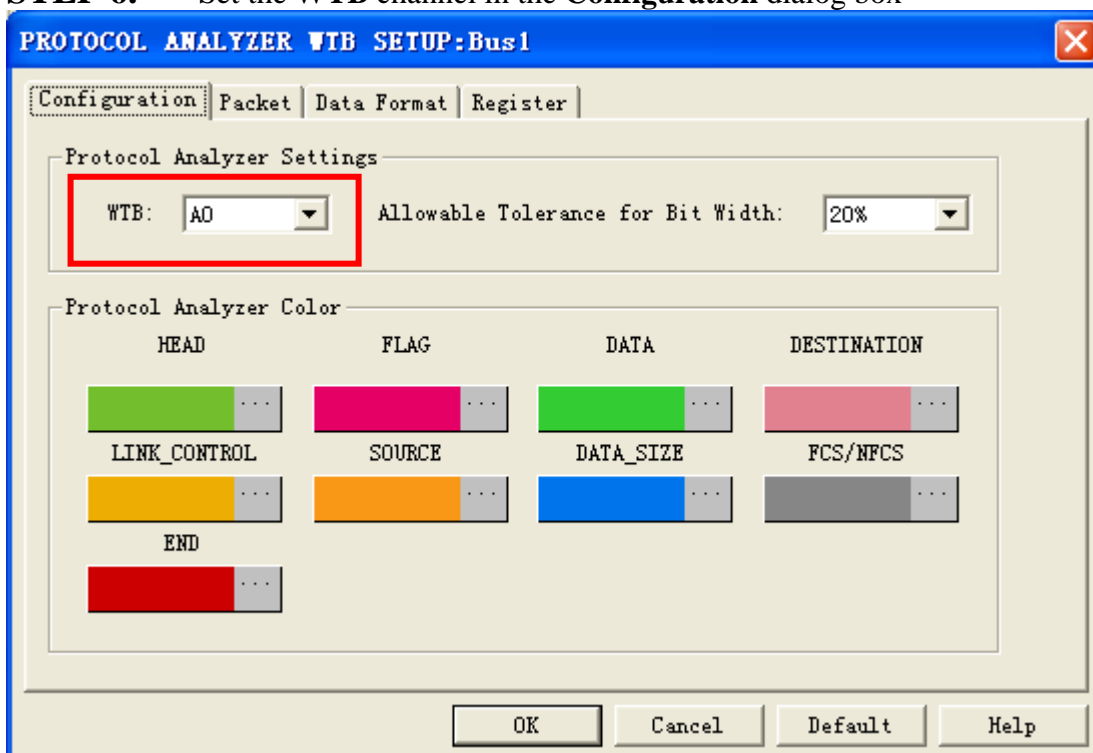




STEP 5. Click **Parameters Configuration** again, and open the Configuration dialog box to set the parameters for the **Protocol Analyzer WTB**.

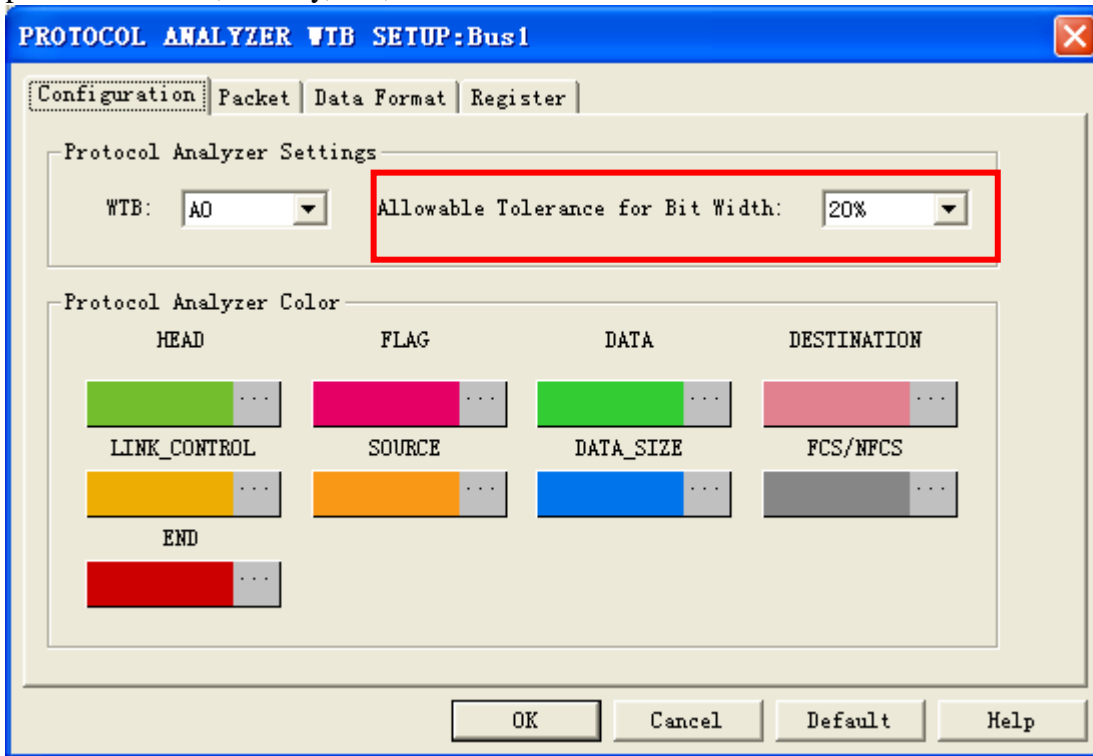


STEP 6. Set the **WTB** channel in the **Configuration** dialog box

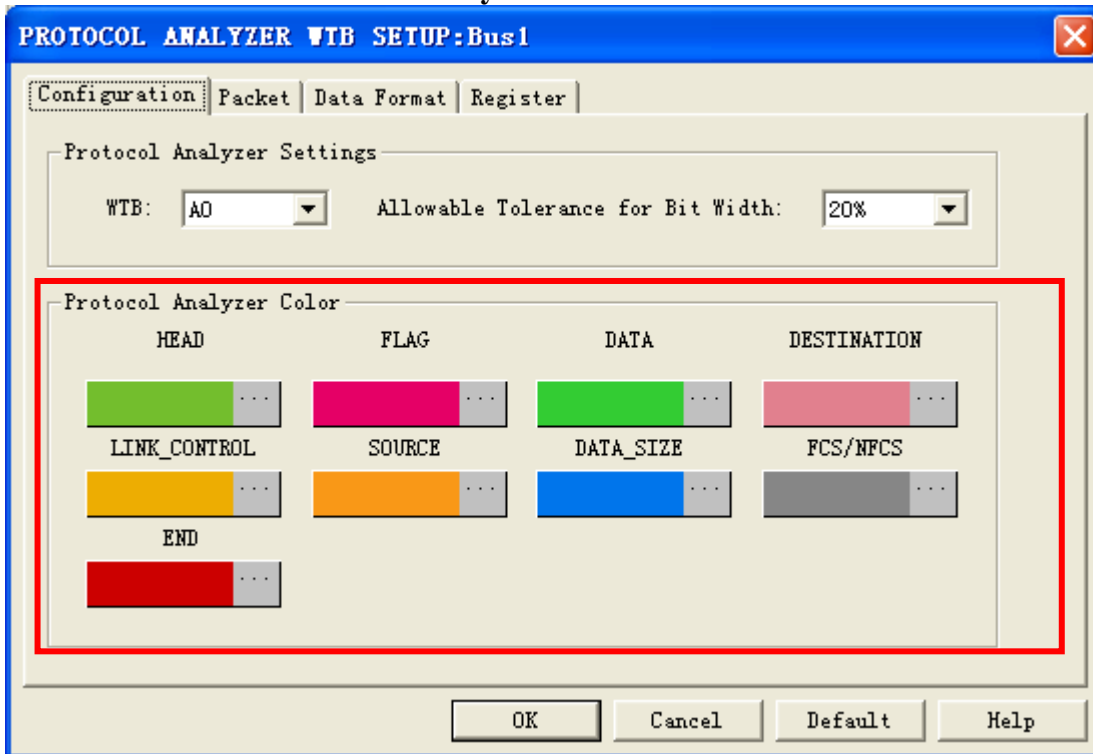




STEP 7. Set Allowable Tolerance for Bit Width. There are four options to be selected from pull-down menu, namely, 5%, 10%, 20% and 30%



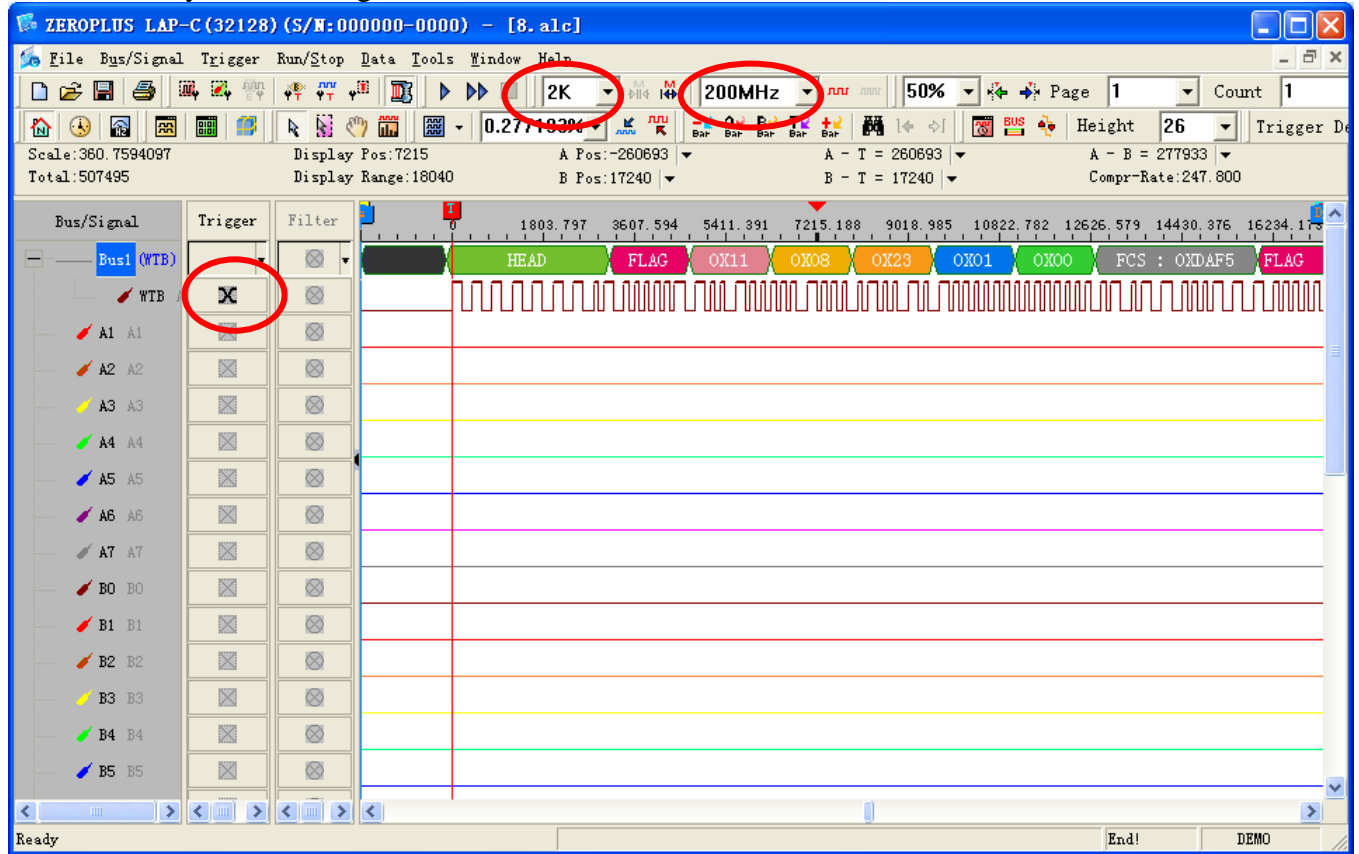
STEP 8. Set the Protocol Analyzer Color.





STEP 9. Following pictures show the completion of the protocol analyzer decoding and the packet list. The trigger condition is set as Either Edge; the memory depth is 2K; the sampling frequency is 200MHz.

Protocol Analyzer Decoding





Packet List

