



孕龍科技股份有限公司
ZEROPLUS TECHNOLOGY CO.,LTD

Instrument Business Department

HDQ Specification

Version : V1.0

Content

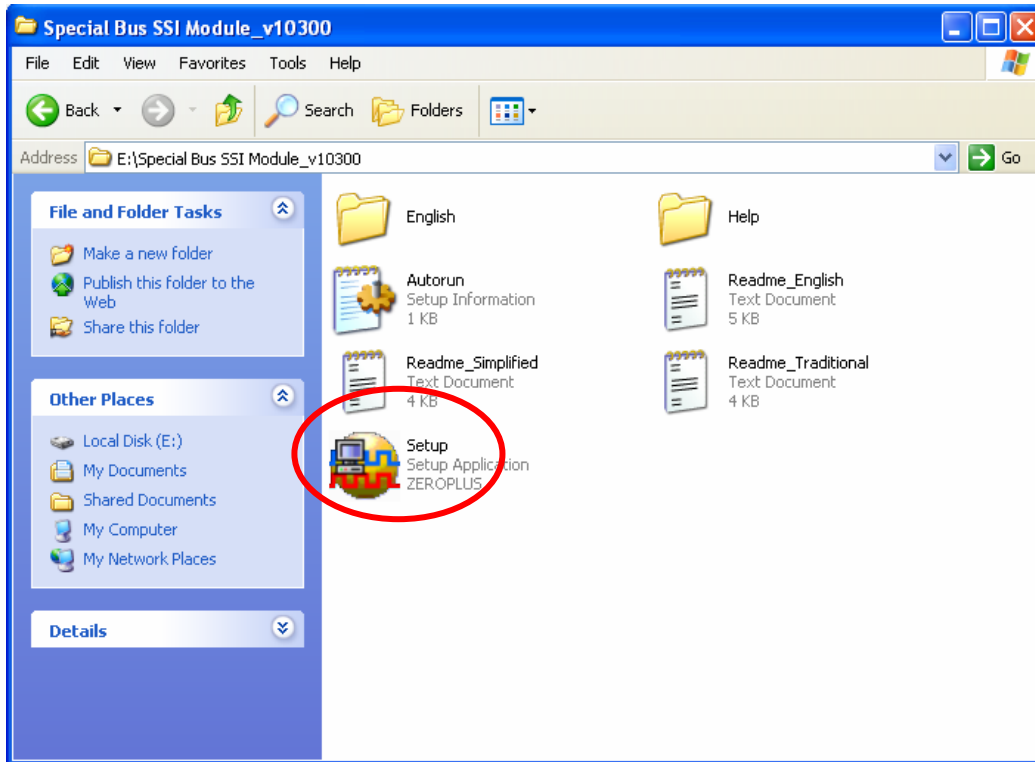
1	Software Installation	3
2	User Interface	7
3	Operating Instructions	8

1 Software Installation

Please follow below steps to install the software:

※ Remark: The installation steps for all buses are the same; you can complete installation by following procedures. Below is an example on how to install SSI bus.

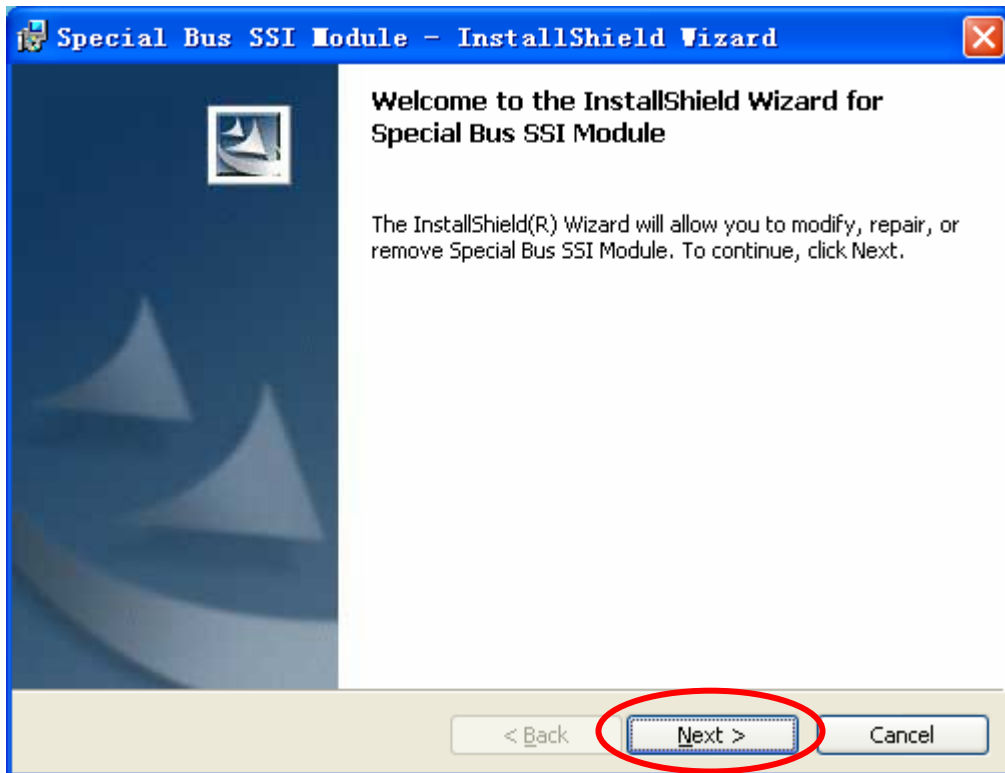
STEP 1. Install Bus Module



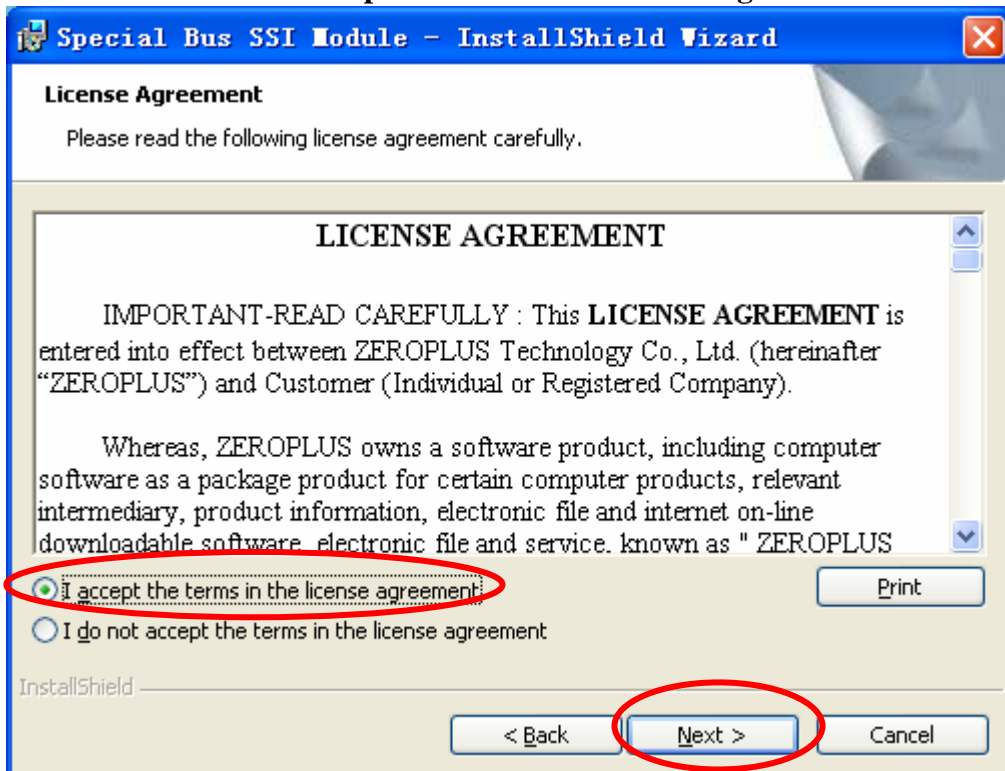
STEP 2. Click Install.



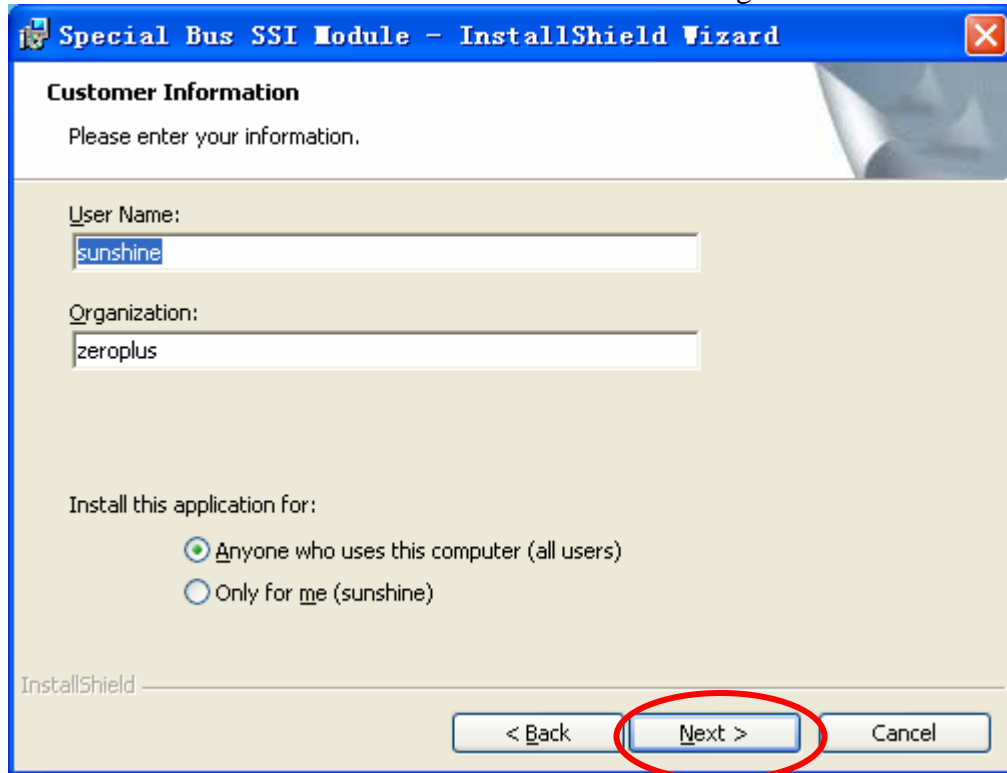
STEP 3. Click Next.



STEP 4. Select I accept the terms in the license agreement, and then press Next.



STEP 5. Fill in user information in the below dialog box and click **Next**.



Special Bus SSI Module - InstallShield Wizard

Customer Information

Please enter your information.

User Name:
sunshine

Organization:
zeroplus

Install this application for:

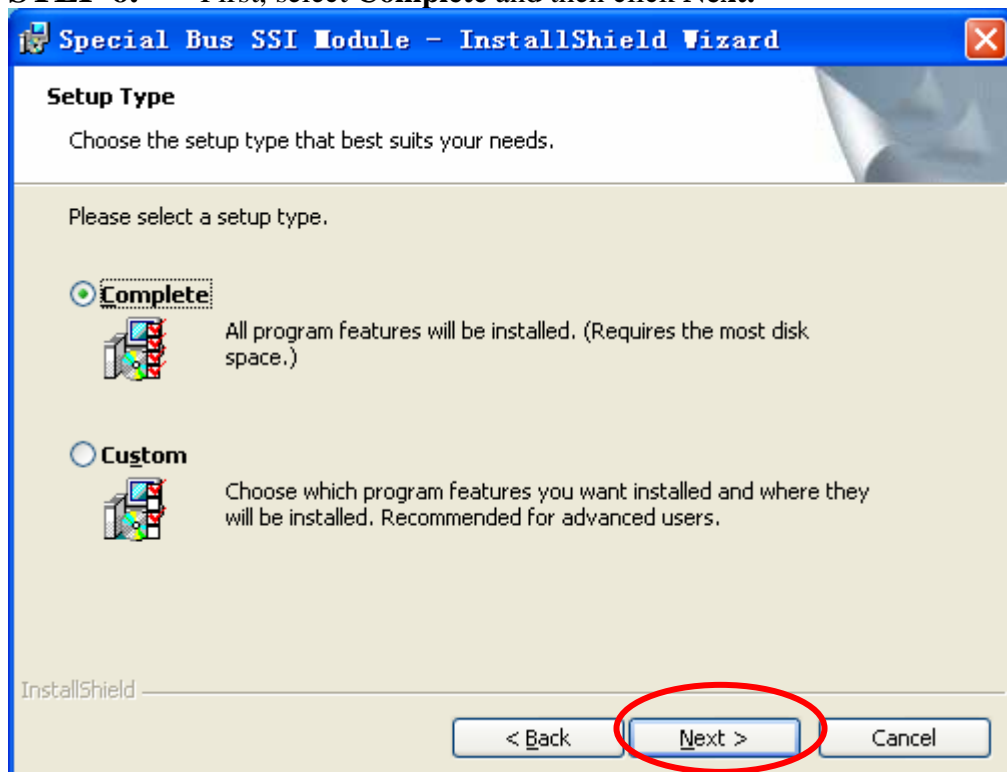
Anyone who uses this computer (all users)

Only for me (sunshine)

InstallShield

< Back Next > Cancel

STEP 6. First, select **Complete** and then click **Next**.



Special Bus SSI Module - InstallShield Wizard

Setup Type

Choose the setup type that best suits your needs.

Please select a setup type.

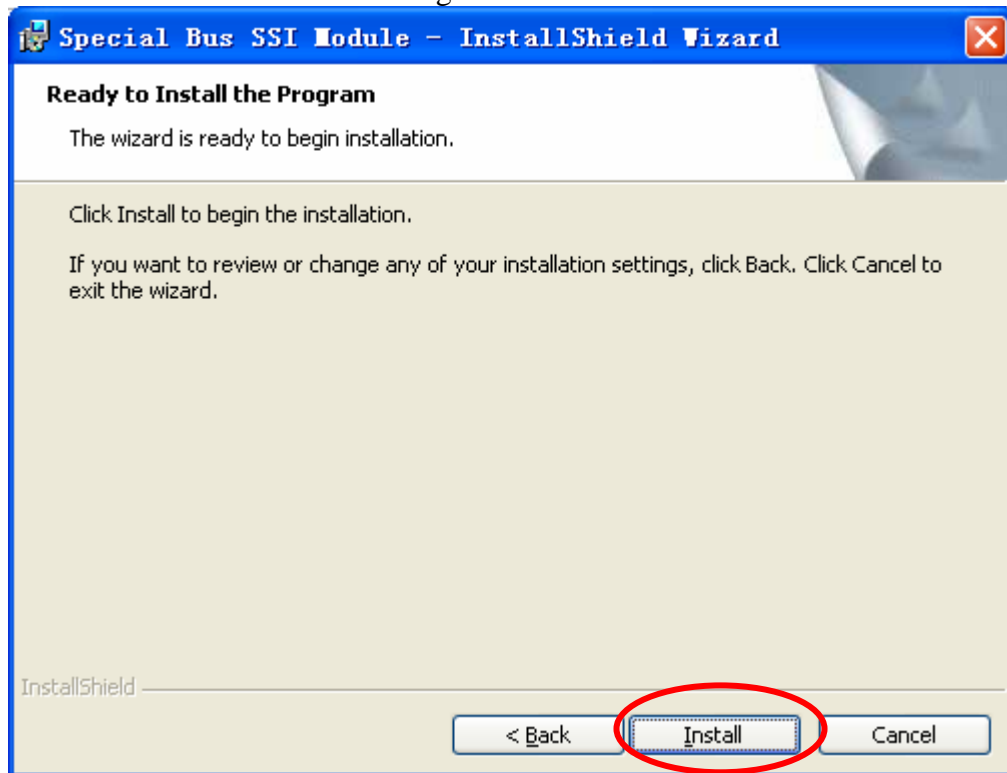
Complete
All program features will be installed. (Requires the most disk space.)

Custom
Choose which program features you want installed and where they will be installed. Recommended for advanced users.

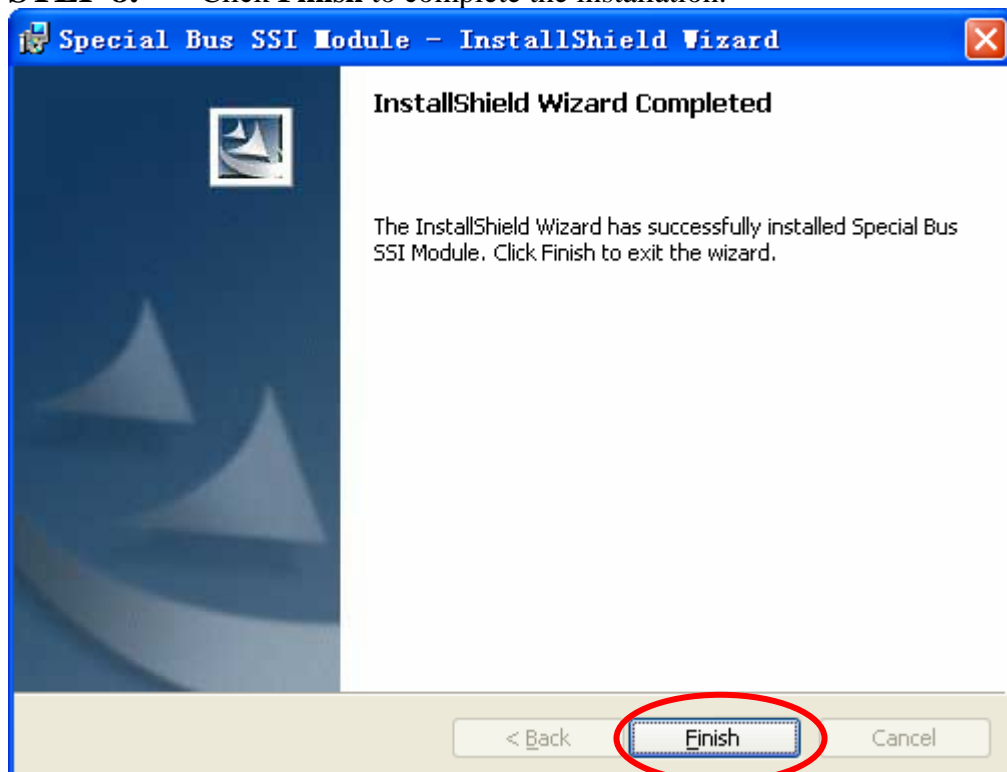
InstallShield

< Back Next > Cancel

STEP 7. Click **Install** to begin the installation.



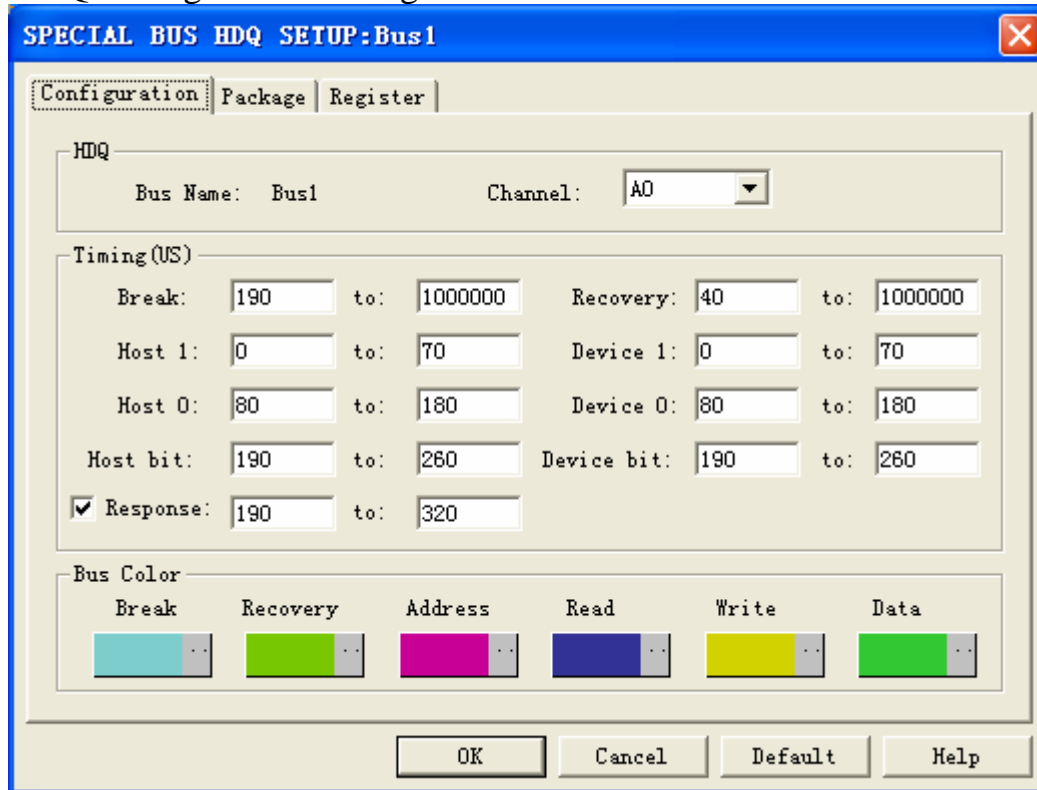
STEP 8. Click **Finish** to complete the installation.



2 User Interface

Please refer to the below images to select options of setting **HDQ MODULE**.

HDQ Configuration Dialog Box



HDQ :HDQ is a data signal line ,its default is A0.

Timing(us): Package waveform time settings, all parameters must be set in US, and the setting parameters are as below:

Break : Break package judges the timing.

Host 0 : ADD package bit judgement is 0.

Host 1 : ADD package bit judgement is 1.

Host Bit : ADD package judges the timing in one bit length.

Recovery : Break package judges the timing.

Device 0 : ADD package bit judgement is 0.

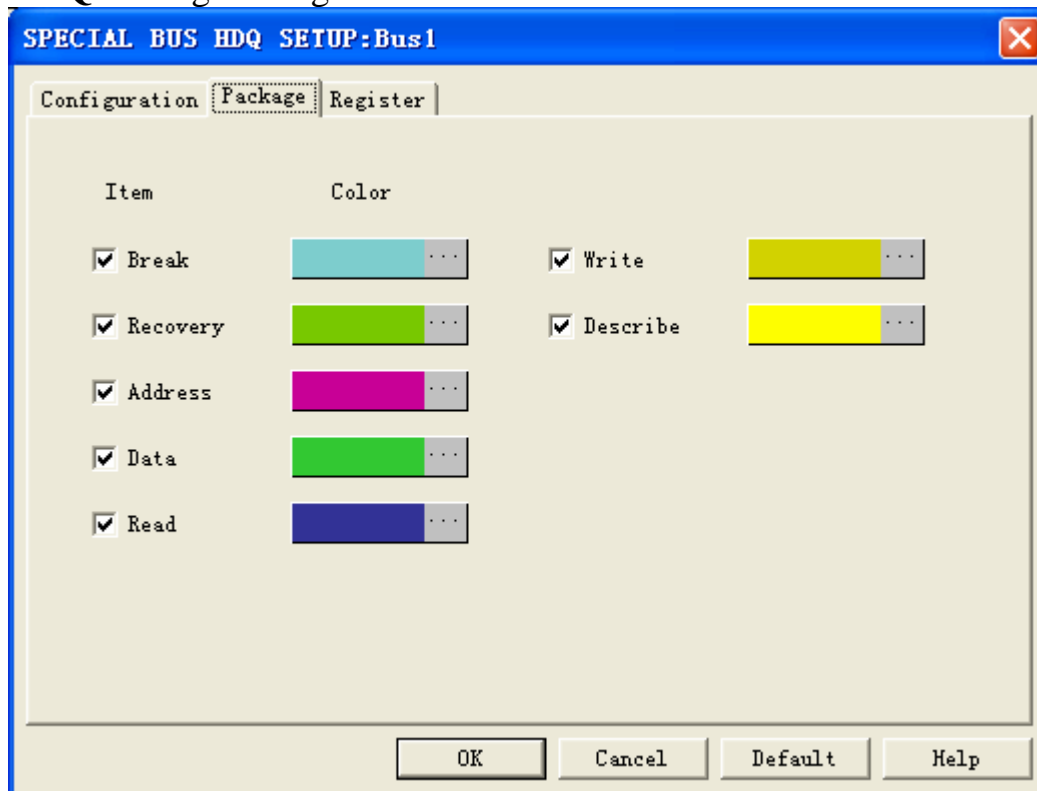
Device 1 : ADD package bit judgement is 1.

Device Bit : Data package one bit length.

Response : Write/Read command judges the timing.

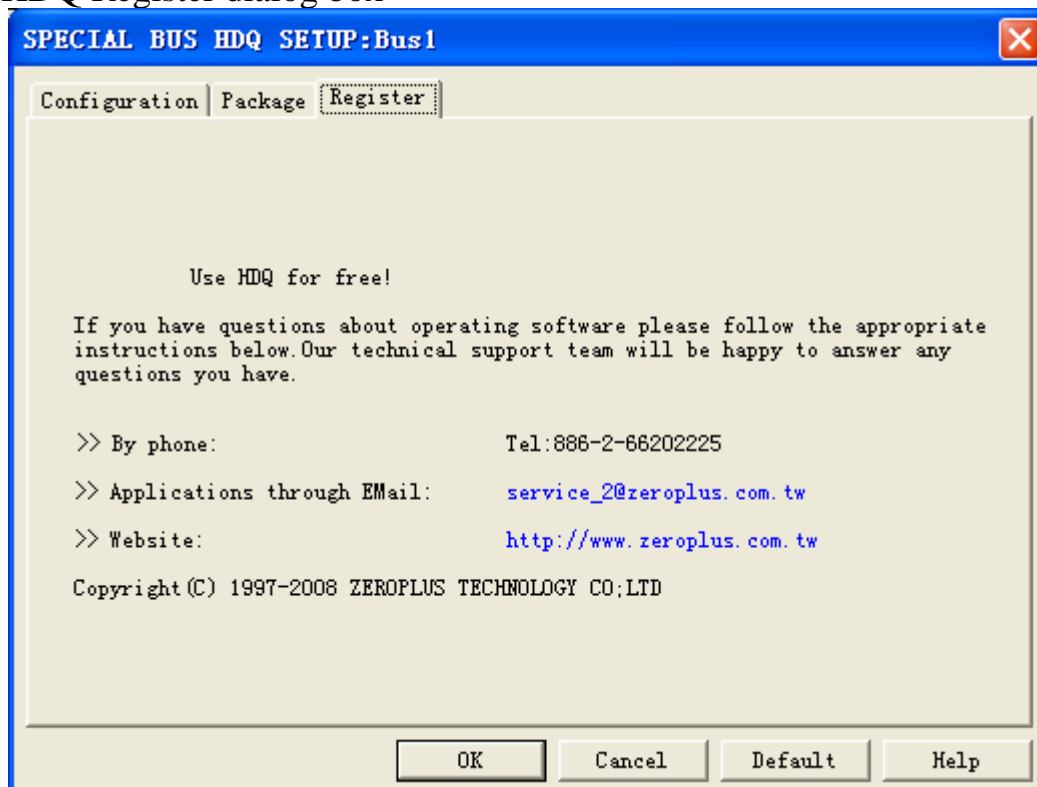
Bus Color: Set the colors for bus package.

HDQ Package dialog box



In the package dialog, user can vary the color of items.

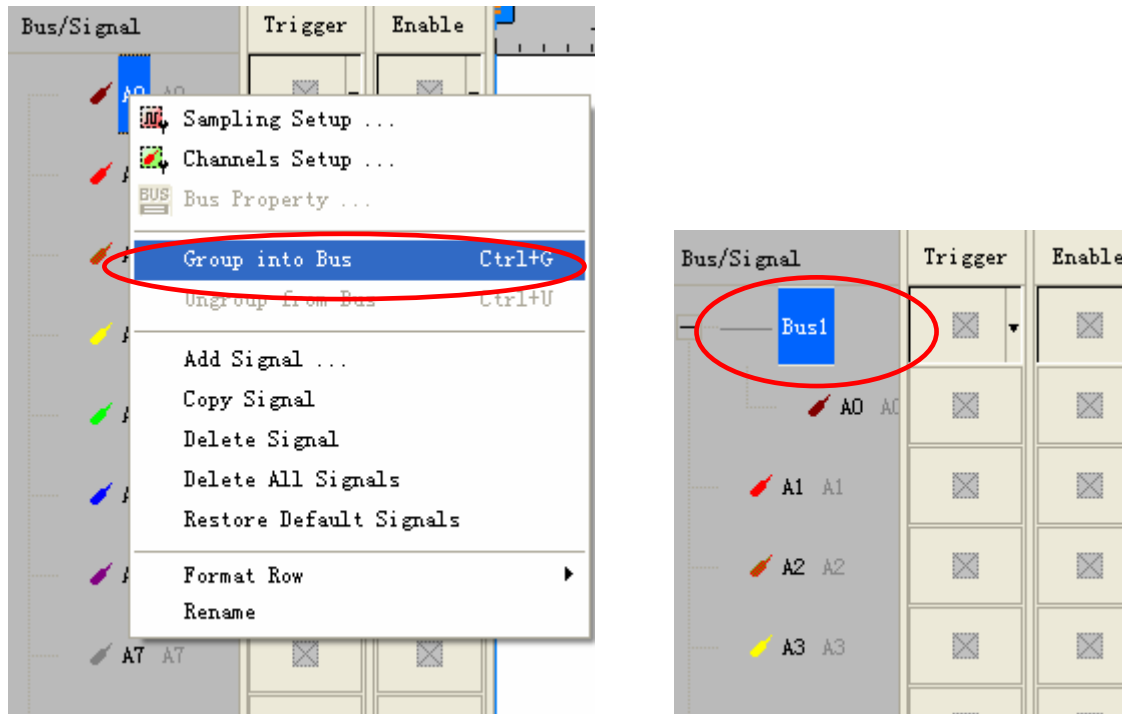
HDQ Register dialog box



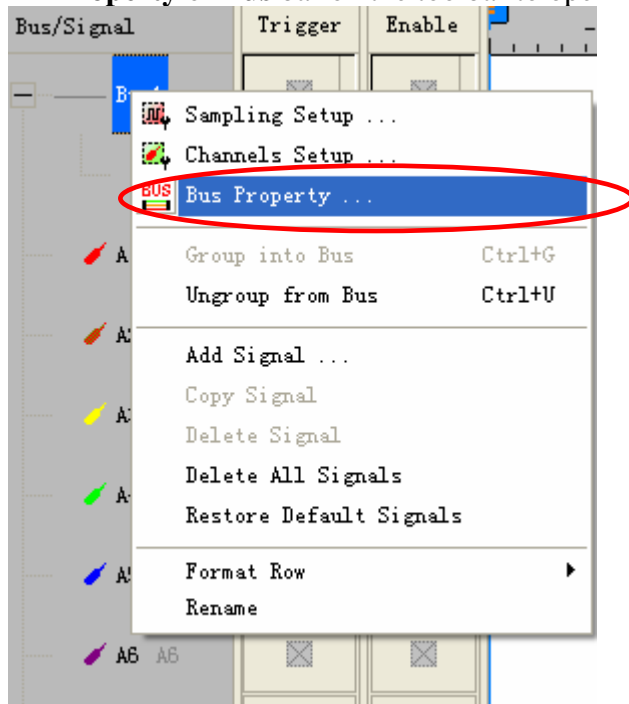
There is Zeroplus company information. If you have any questions about software Operations, you can contact Zeroplus by Telephone or Email.

3 Operating Instructions

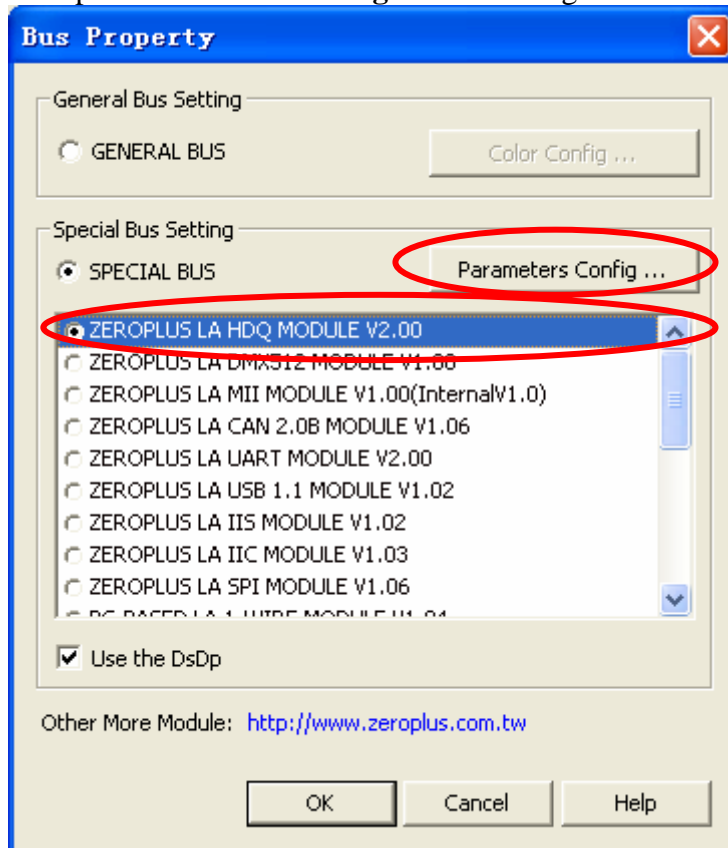
STEP 1. First, group the unanalyzed channels into **bus1** by pressing the **Right Key** on mouse.



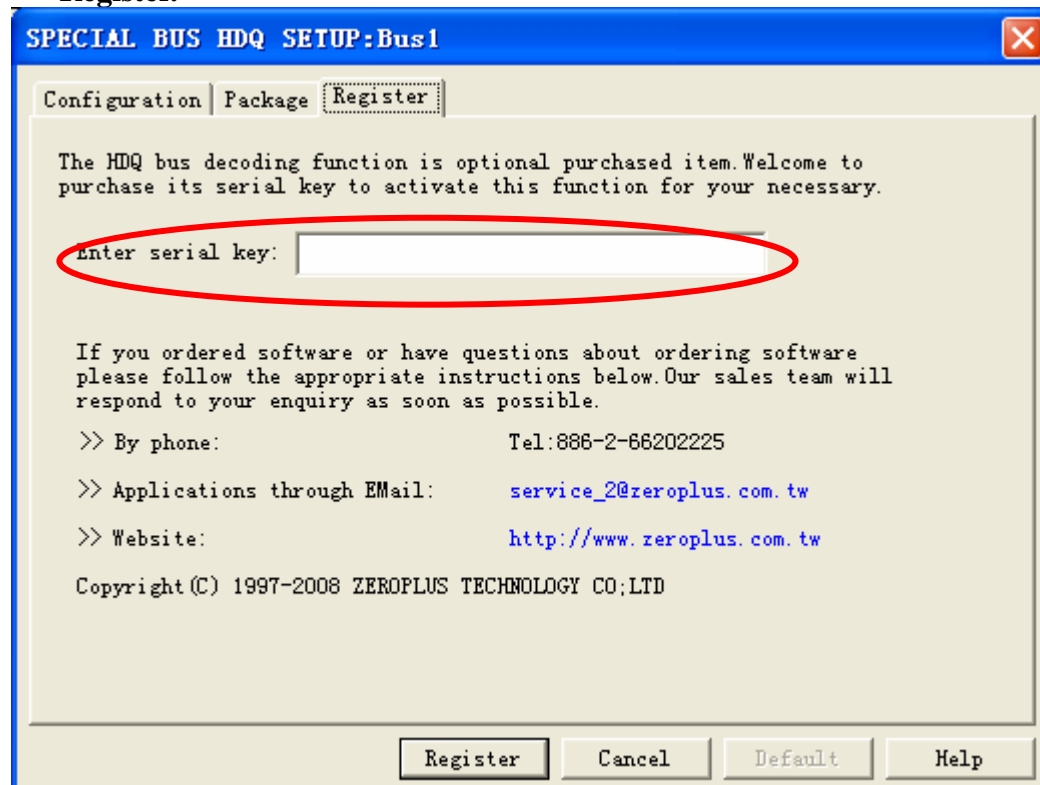
STEP 2. Select **Bus1**, then press **Right key** on mouse to list menu, then press **Bus Property** or **Bus bar** on the toolbar to open **Bus Property** dialog box.



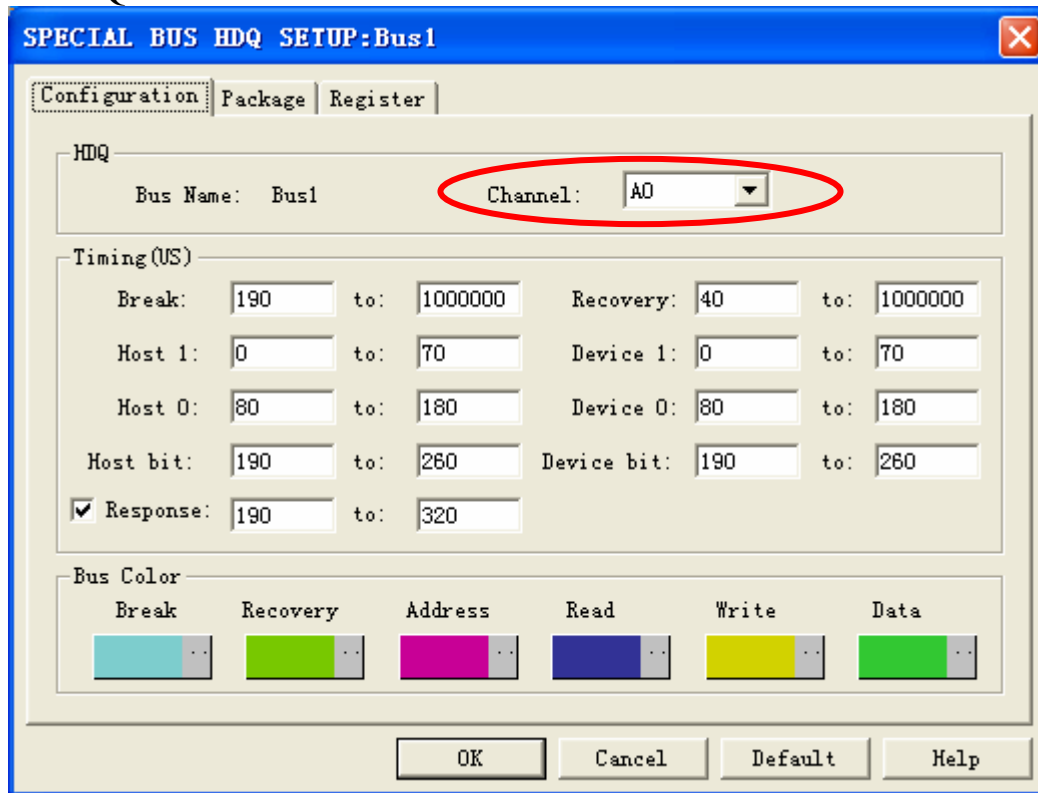
STEP 3. For Special Bus HDQ Parameters Configuration, select Special Bus, and then choose **ZEROPLUS LA HDQ MODULE V2.00**. Next click **Parameters Configuration** to open **Parameters Configuration** dialog box



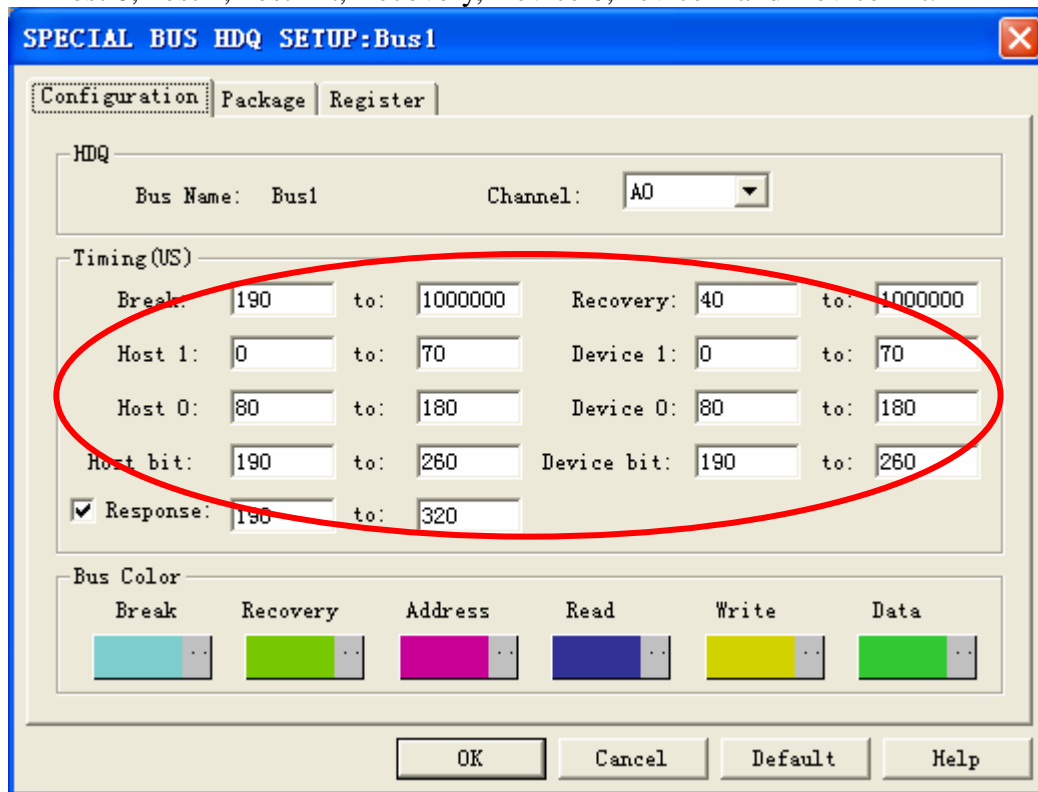
STEP 4. Press Register tab to key in the serial key number of logic analyzer. Then, press **Register**.



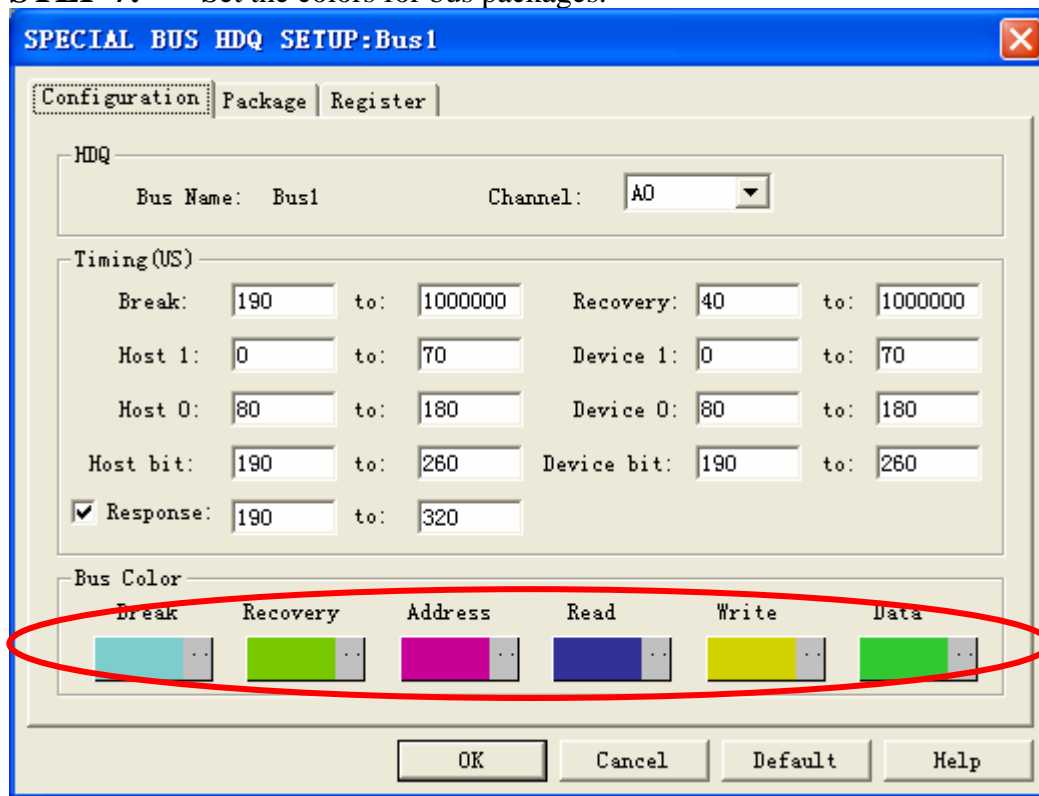
STEP 5. Click Configuration to open the configuration dialog box, and then set channel for HDQ



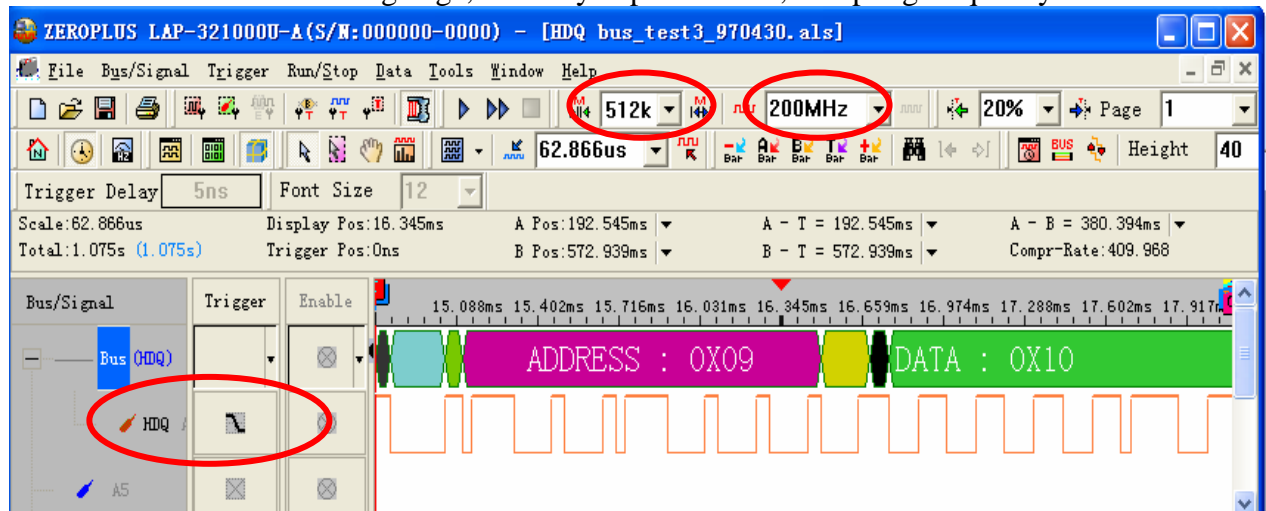
STEP 6. Set all parameters for Timing in us and all parameters are as following: Break, Host 0, Host 1, Host Bit, Recovery, Device 0, Device 1 and Device Bit.



STEP 7. Set the colors for bus packages.



STEP 8. Following pictures show the completion of the Bus decoding and package list. The conditions are set as falling edge, Memory depth is 512K, Sampling frequency is 200MHz.



Following picture shows the package list and waveforms display.

