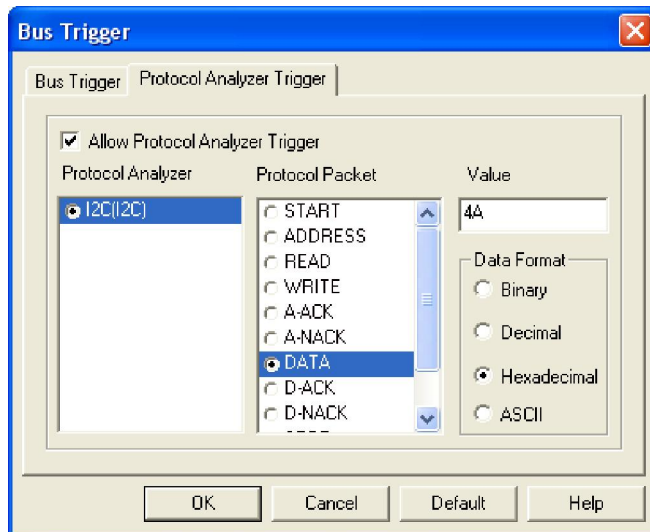


## Protocol Analyzer Trigger (Software function)

The Protocol Analyzer' Trigger' function can be used to help you find a specific packet in the complex packets of the Protocol Analyzer. The available 'trigger' options depend on the different Protocol Analyzers. Attention: This is not a real hardware trigger function, the results are obtained by searching the sampled data by software.



When we enable the Protocol Analyzer 'Trigger' function for the Protocol Analyzer I2C for example, Protocol Packets such as START, ADDRESS, READ, WRITE, A-ACK, D-ACK, D-NACK, A-NACK, ERROR and STOP can be selected to 'trigger' on. The Data Value of the Protocol Packet can be entered according to your requirements.

