



孕龍科技股份有限公司
Zeroplus Technology Co., Ltd.

SPECIFICATION

MODEL: WIEGAND Specification

PART NO : B09009

VERSION : V1.00

Approver		Check	Design
GM	PM		

Customer Confirm

* Please fax the file to
Zeroplus Technology after
signing .

2F, NO.123, Jian Ba Rd,
Chung Ho City, Taipei Hsian, R.O.C.

Tel:+886-2-66202225
Fax:+886-2-22234362



Content

1	Software Installation	3
2	User Interface	7
3	Operating Instructions.....	9



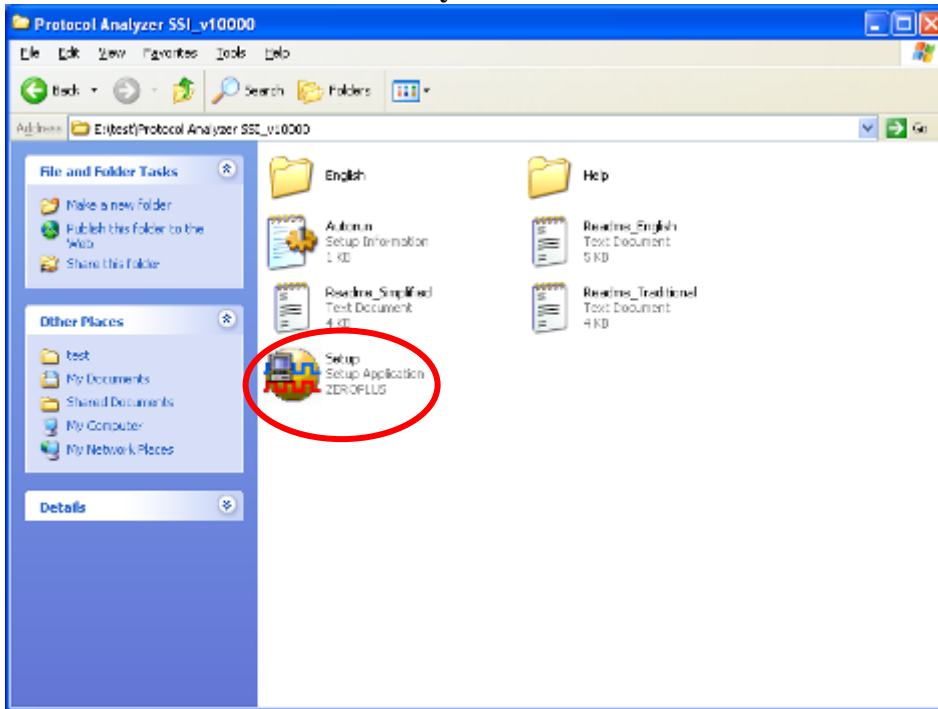
1 Software Installation

Please install the software as the following steps:

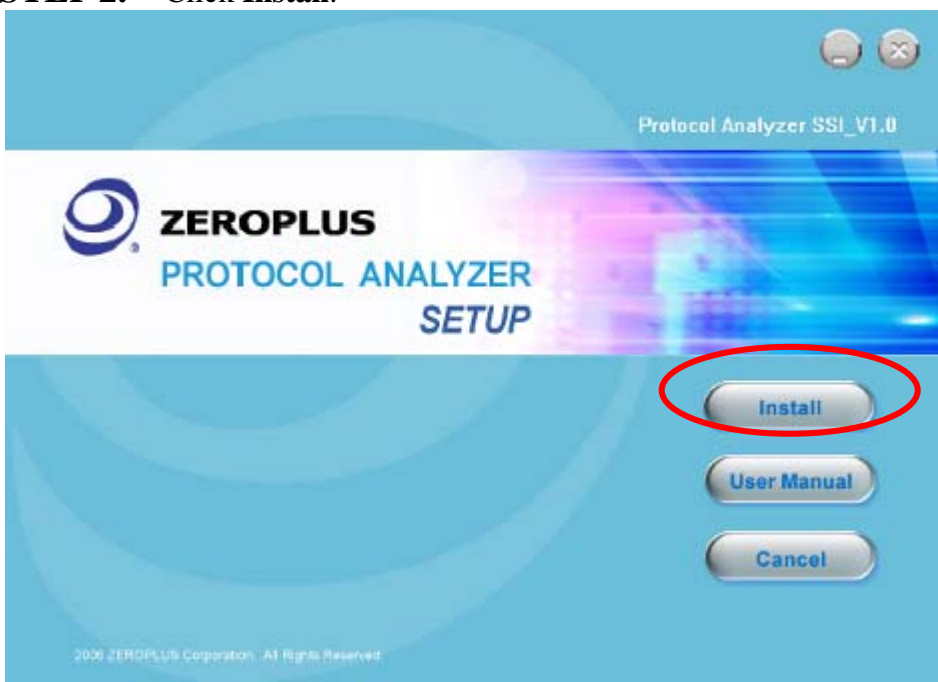
※ Remark: 1. The installation steps for all protocol analyzers are the same; you can complete the installation by following procedures. Following is an example on how to install protocol analyzer SSI.

※ Remark: 2. We won't have additional notice for you, when there is any modification of the module specification. If there is some unconformity caused by the module version upgrade, users should take the module software as the standard.

STEP 1. Install Protocol Analyzer Module.

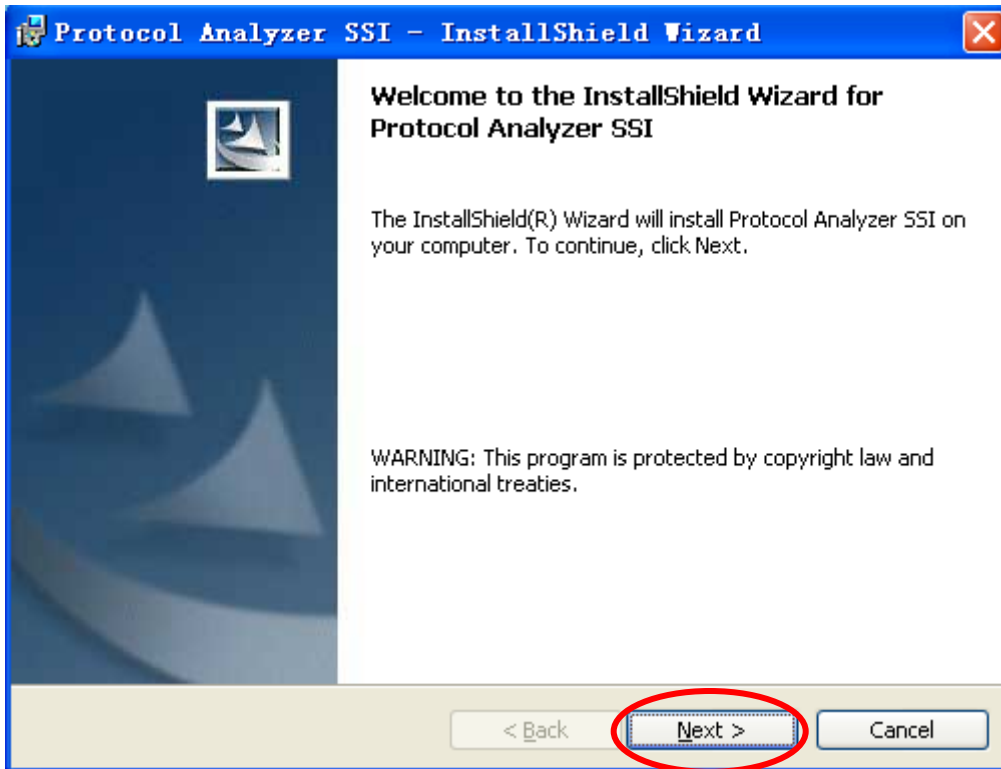


STEP 2. Click Install.

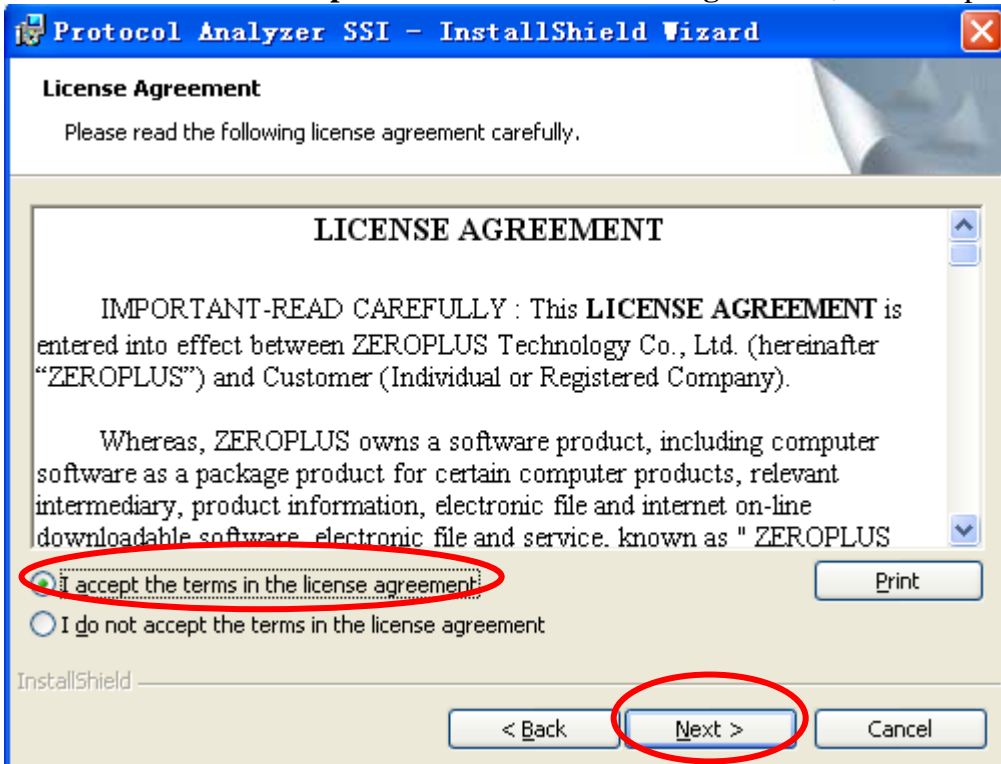




STEP 3. Click Next.



STEP 4. Select **I accept the terms in the license agreement**, and then press **Next**.





STEP 5. Fill in users' information in the below dialog box and click **Next**.

Protocol Analyzer SSI - InstallShield Wizard

Customer Information

Please enter your information.

User Name:
sunshine

Organization:
zeroplus

Install this application for:

Anyone who uses this computer (all users)

Only for me (sunshine)

InstallShield

< Back Next > Cancel

STEP 6. First, select **Complete** and then click **Next**.

Protocol Analyzer SSI - InstallShield Wizard

Setup Type

Choose the setup type that best suits your needs.

Please select a setup type.

Complete
All program features will be installed. (Requires the most disk space.)

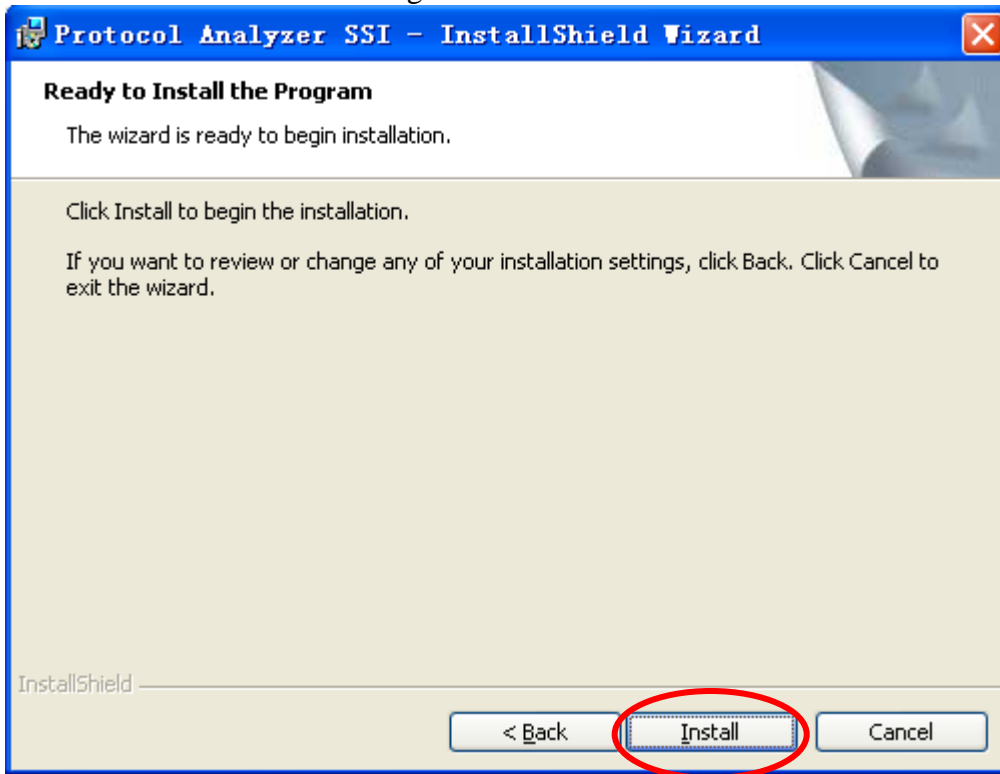
Custom
Choose which program features you want installed and where they will be installed. Recommended for advanced users.

InstallShield

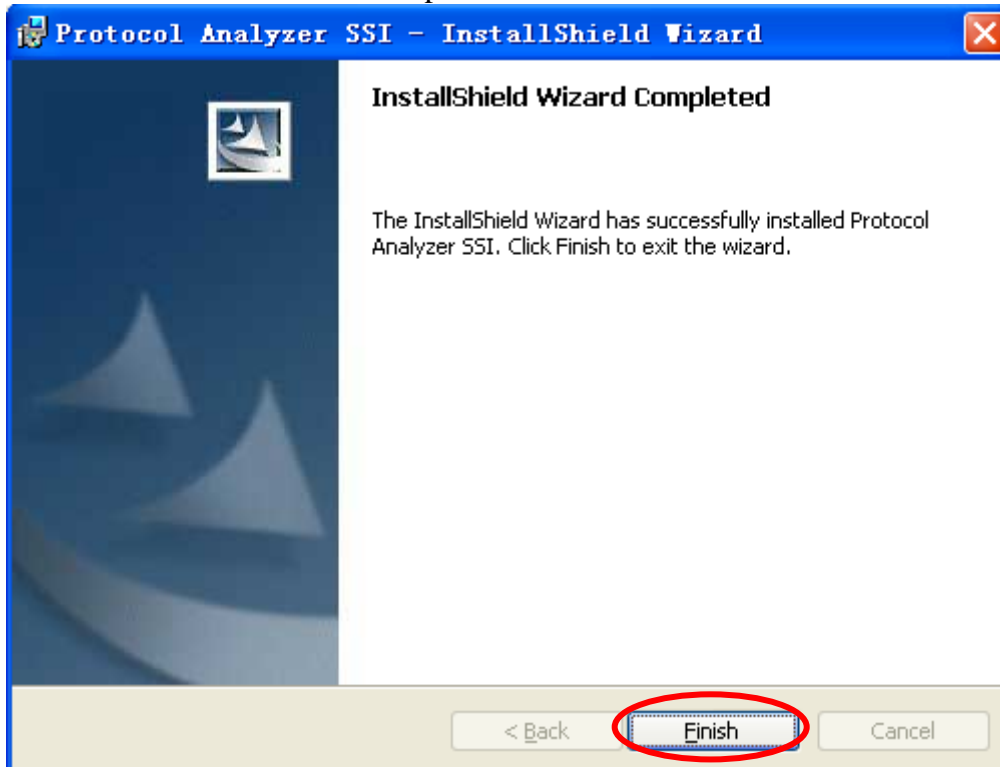
< Back Next > Cancel



STEP 7. Click **Install** to begin the installation.



STEP 8. Click **Finish** to complete the installation.

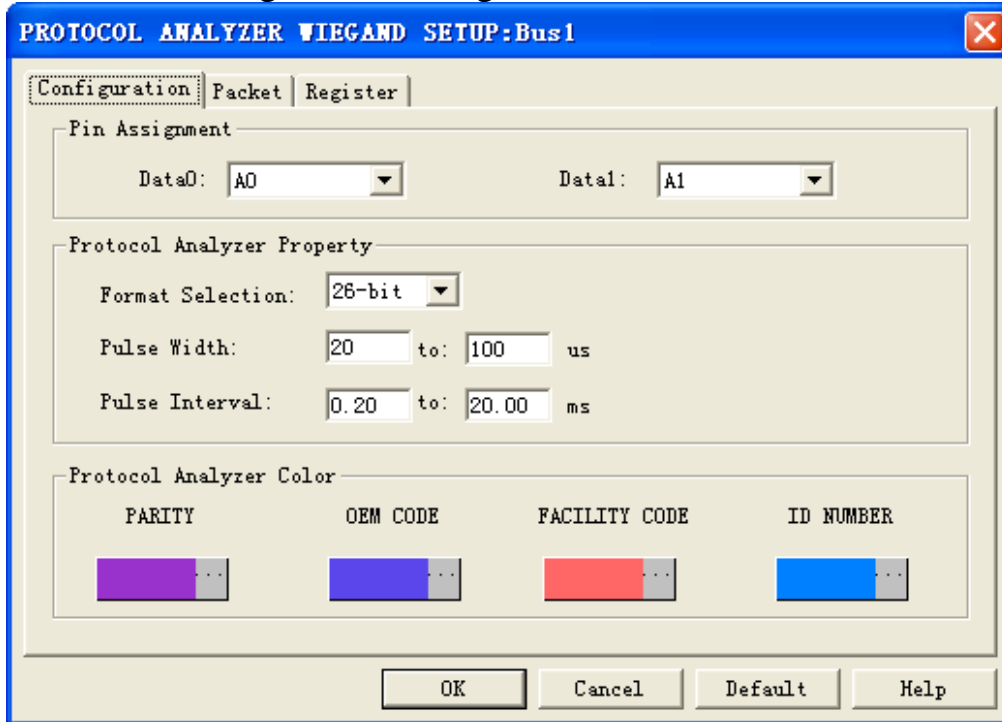




2 User Interface

In the configuration, please refer to the below images to select options of setting WIEGAND module.

WIEGAND Configuration Dialog Box



Pin Assignment:

Data0: It is the output channel of Data0.

Data1: It is the output channel of Data1.

Protocol Analyzer Property:

Format Selection: There are three options, 26-bit, 39-bit and 44-bit.

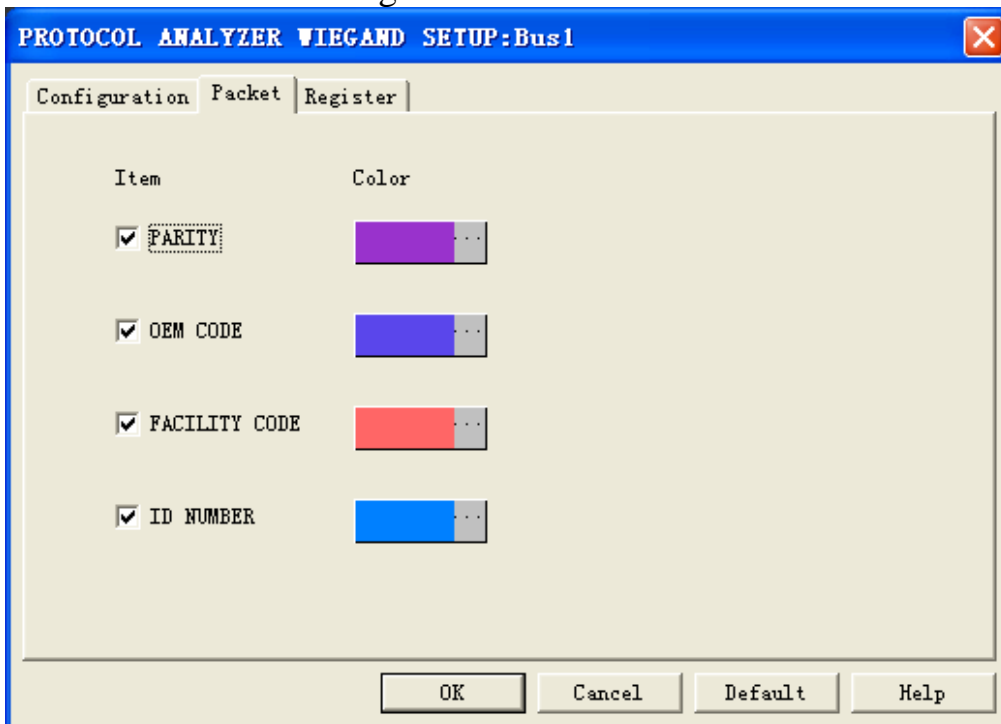
Pulse Width: Set the time width for the generated negative pulse; when inputting the value, the min. value can be set as 10us and the max. value can be set as 200us, and the min. value should be less than the max. value. The default value is from 20us to 100us.

Pulse Interval: Set the time interval for each adjacent negative pulse; when inputting the value, the min. value can be set as 0.20ms and the max. value can be set as 250.00ms, and the min. value should be less than the max. value. The default value is from 0.20ms to 20.00ms.

Protocol Analyzer Color: The Protocol Analyzer Color can be varied by users.

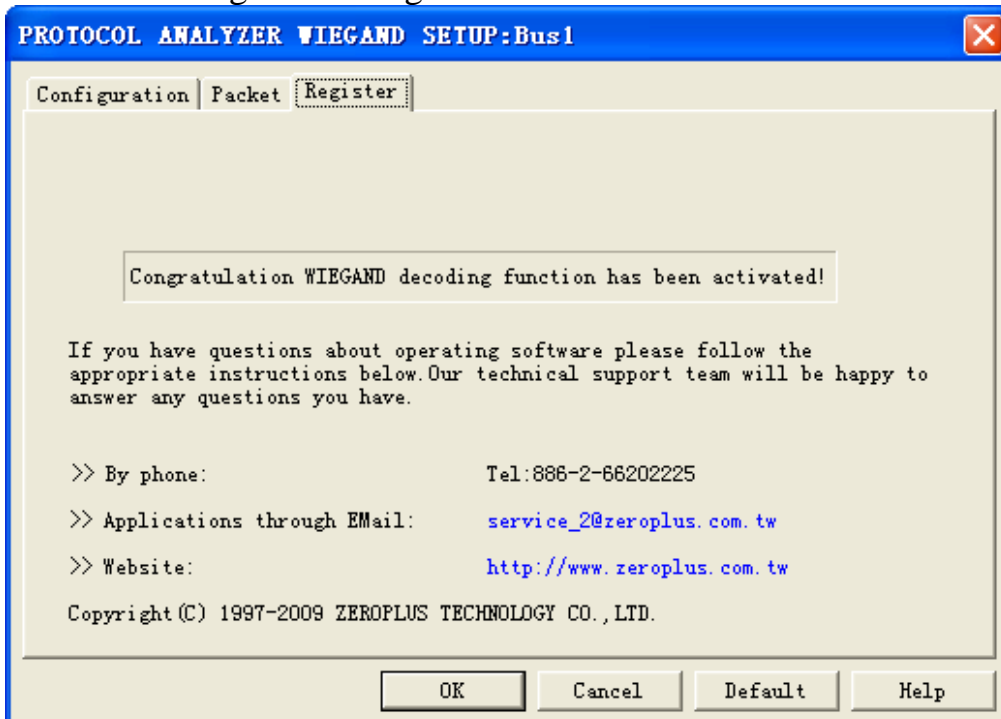


WIEGAND Packet Dialog Box



In the packet part, users can set the items and colors as users' requirements.

WIEGAND Register Dialog Box

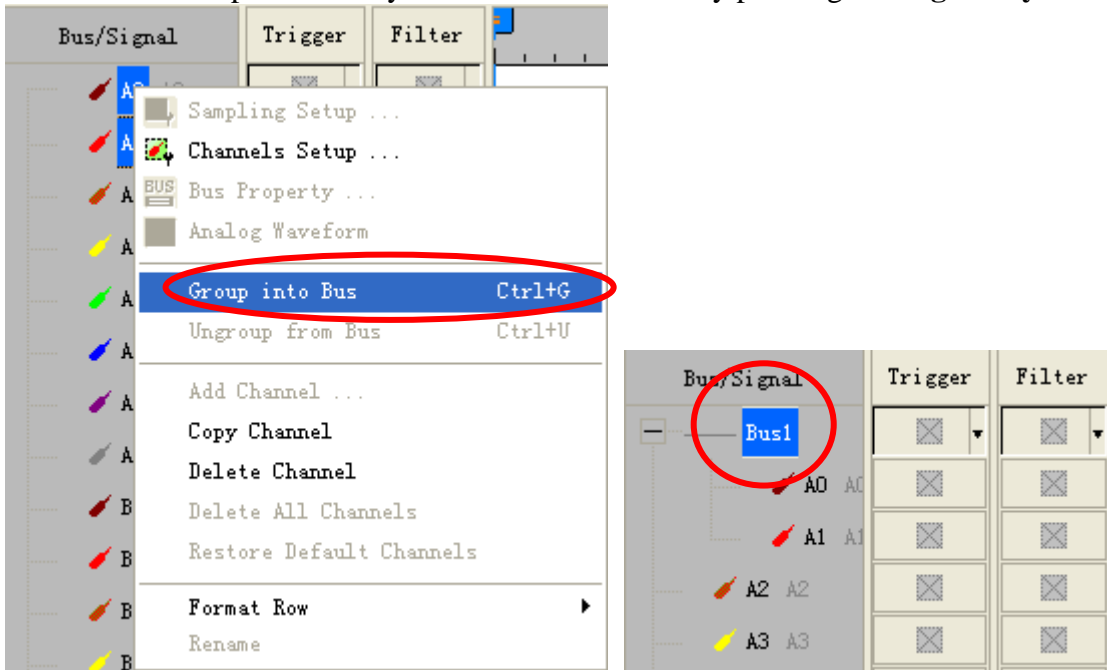


There is written ZeroPlus company information. If you have any questions about software operations, you can contact ZeroPlus by Telephone or Email.

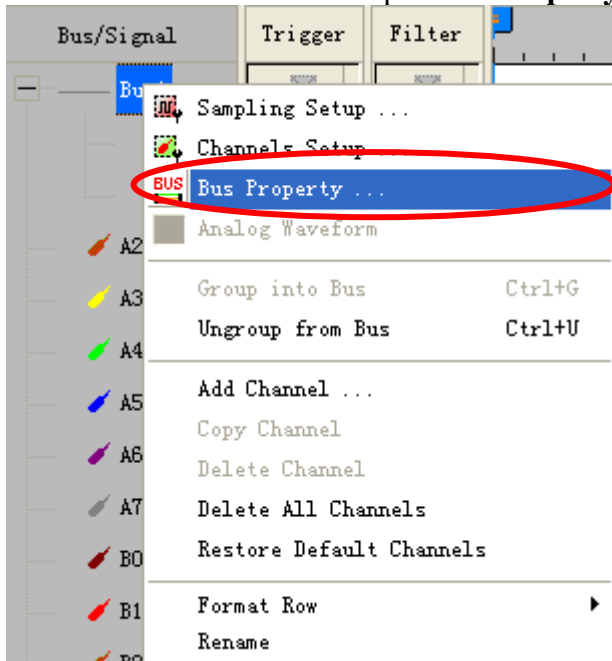


3 Operating Instructions

STEP 1. Group the unanalyzed channel into **Bus1** by pressing the **Right Key** on the mouse.

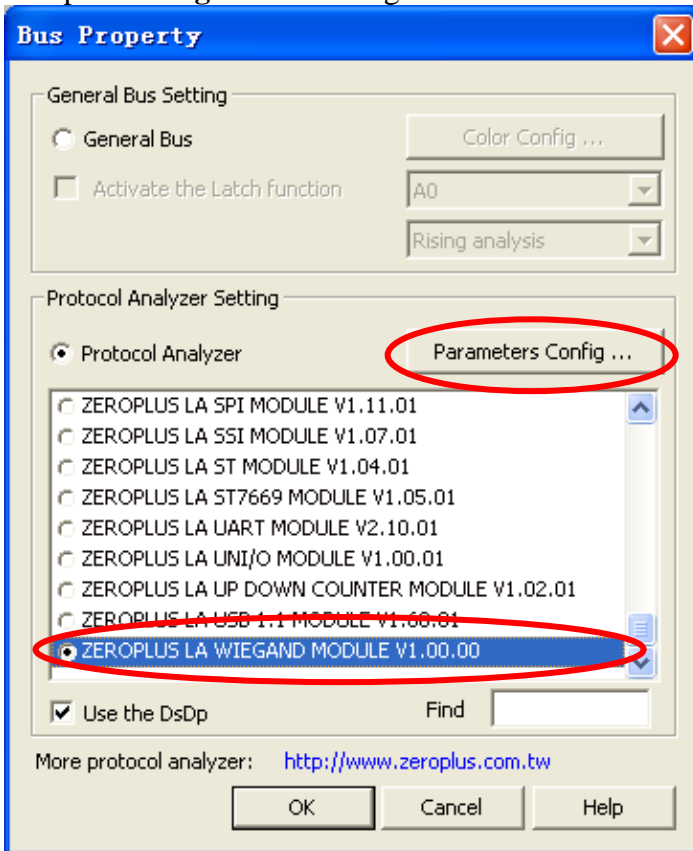


STEP 2. Select **Bus1**, and press **Right Key** on the mouse to list the menu, then press **Bus Property** or **Bus bar** on the toolbar to open **Bus Property** dialog box.

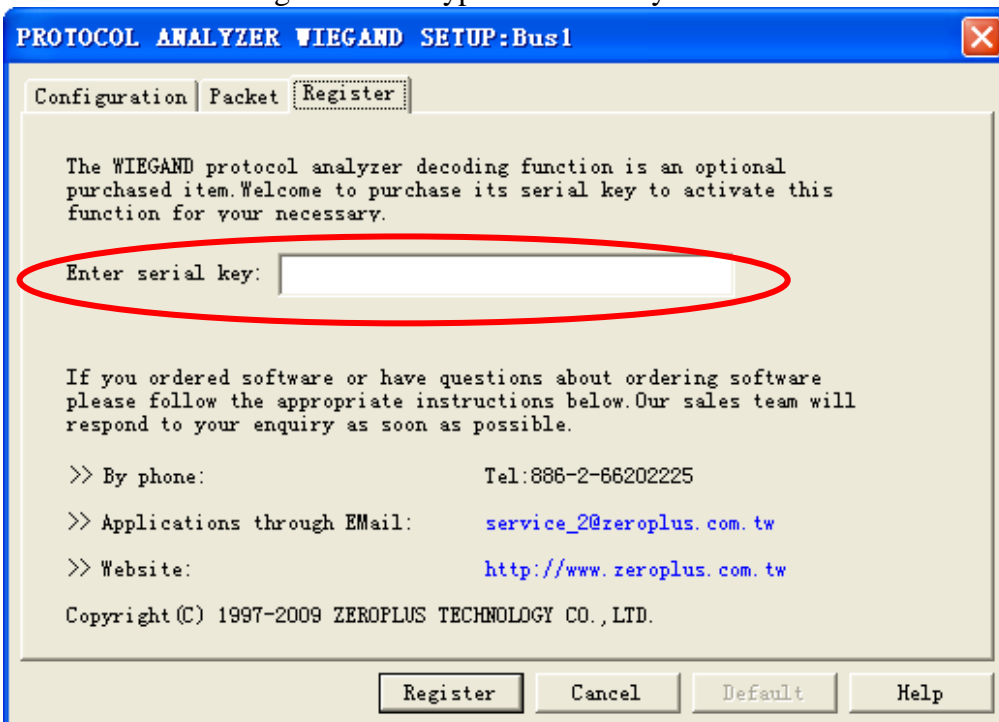




STEP 3. For Protocol Analyzer WIEGAND Parameters Configuration, select Protocol Analyzer, and then choose **ZEROPLUS LA WIEGAND MODULE V1.00.00**. Next click **Parameters Configuration** to open **Configuration** dialog box.

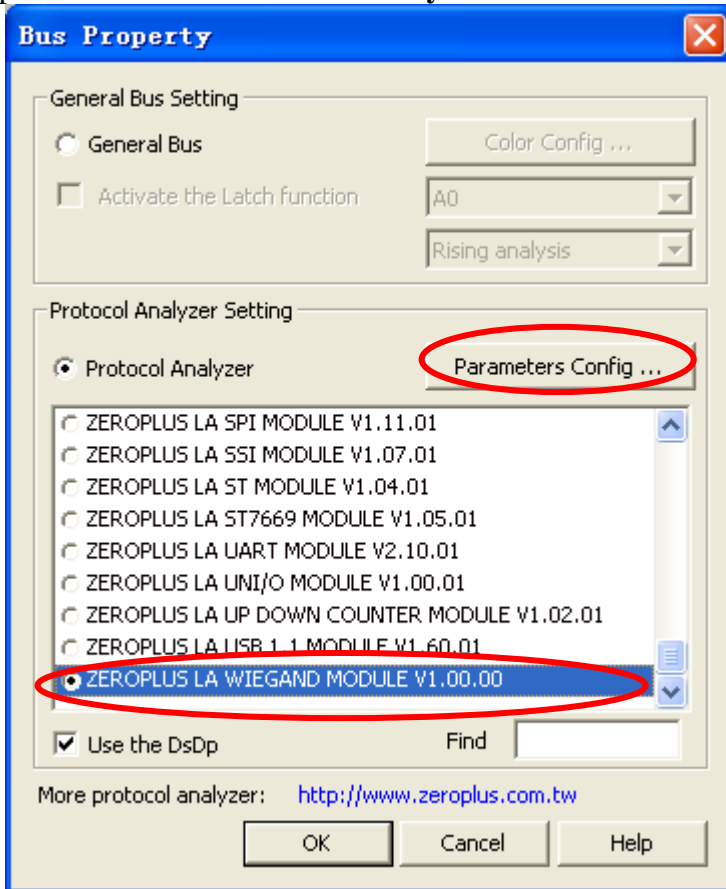


STEP 4. Press Register tab to type the serial key number of WIEGAND. Then, press **Register**.

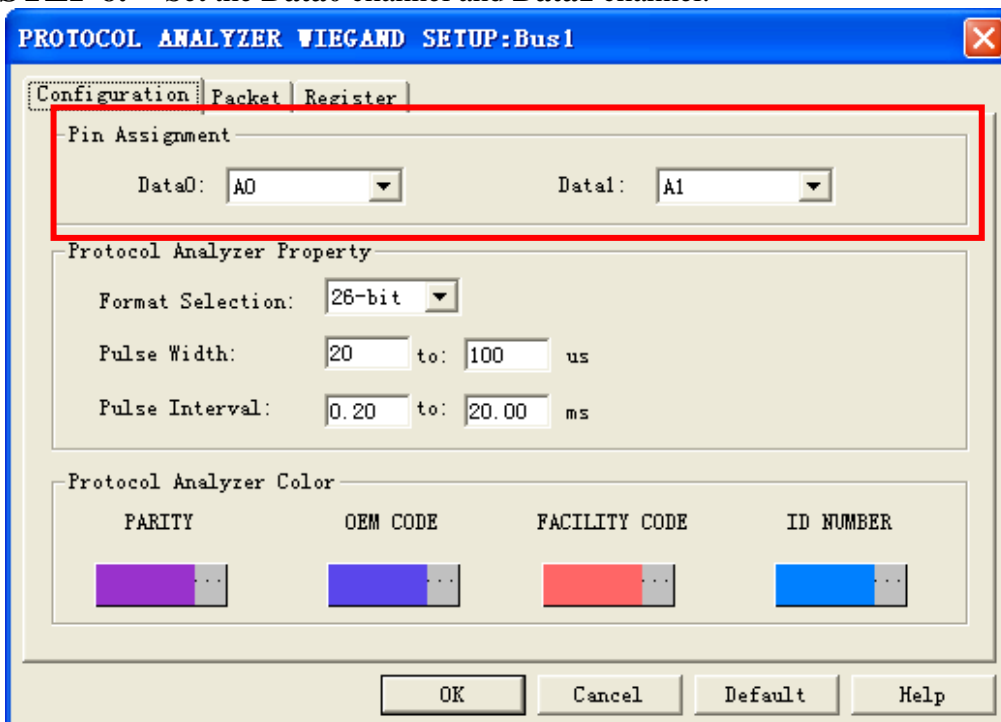




STEP 5. Click **Parameters Configuration** again, and open the configuration dialog box to set the parameters for the **Protocol Analyzer WIEGAND**.

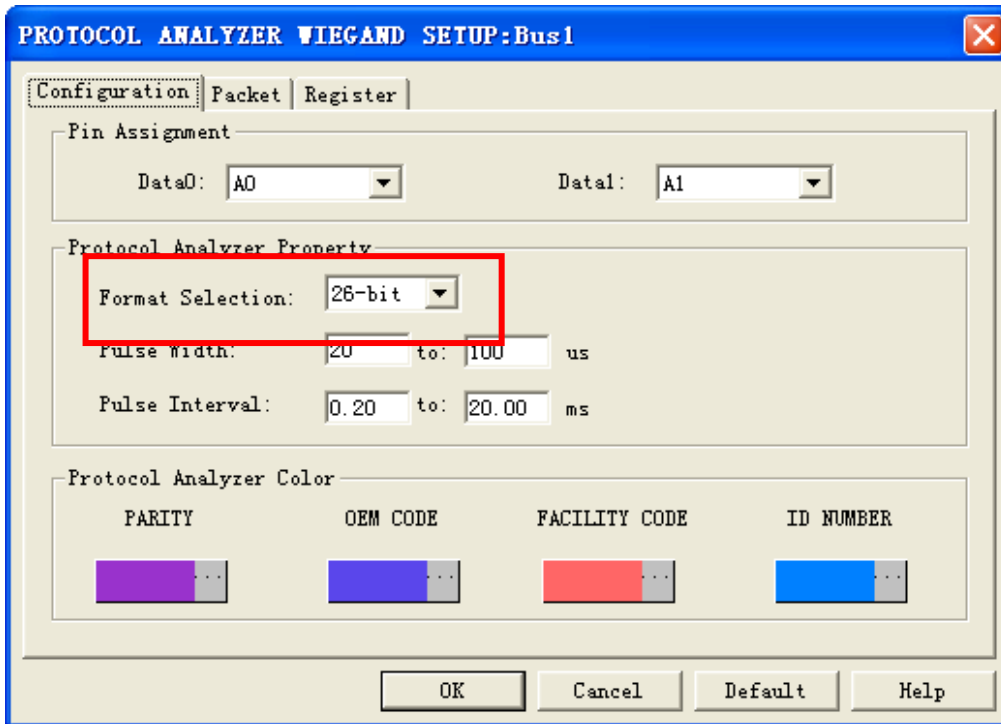


STEP 6. Set the **Data0** channel and **Data1** channel.

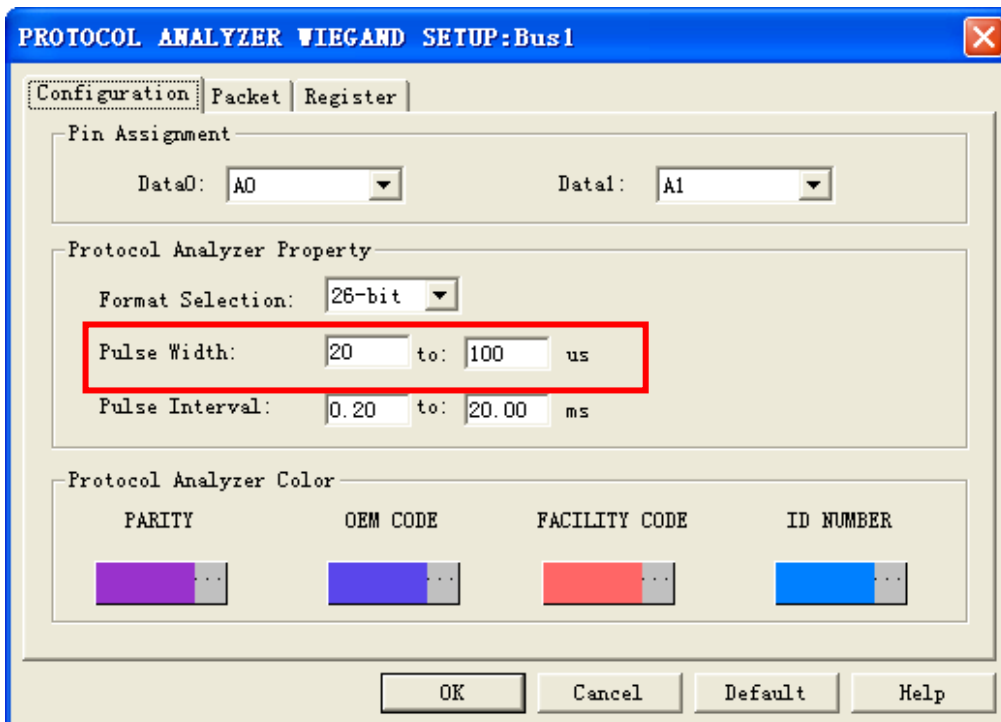




STEP 7. Set the Format Selection.

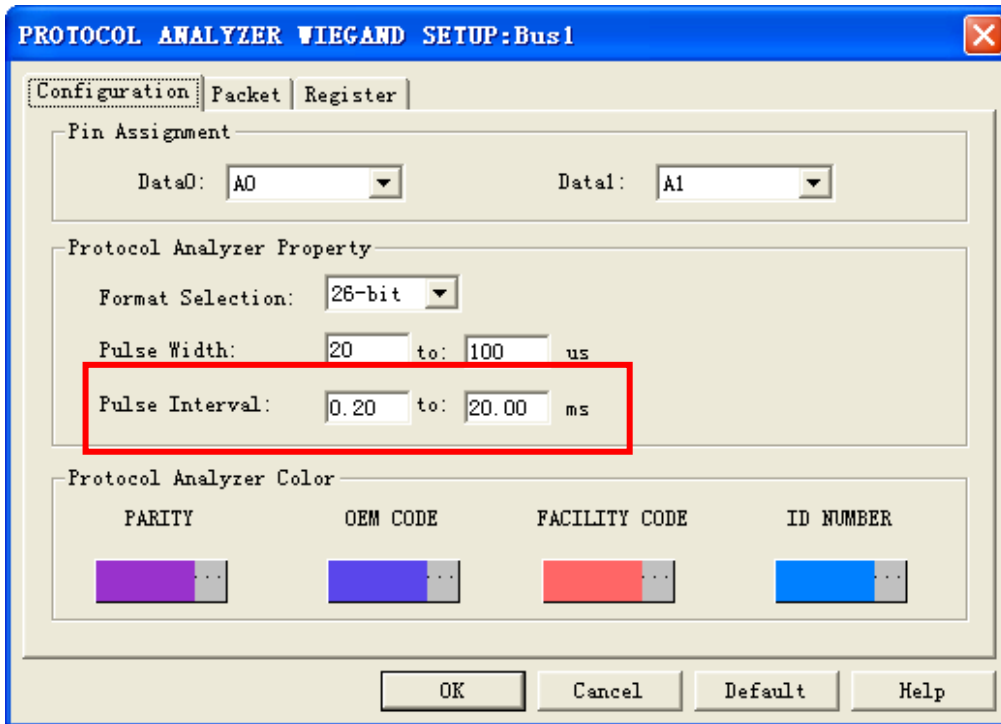


STEP 8. Set the Pulse Width.

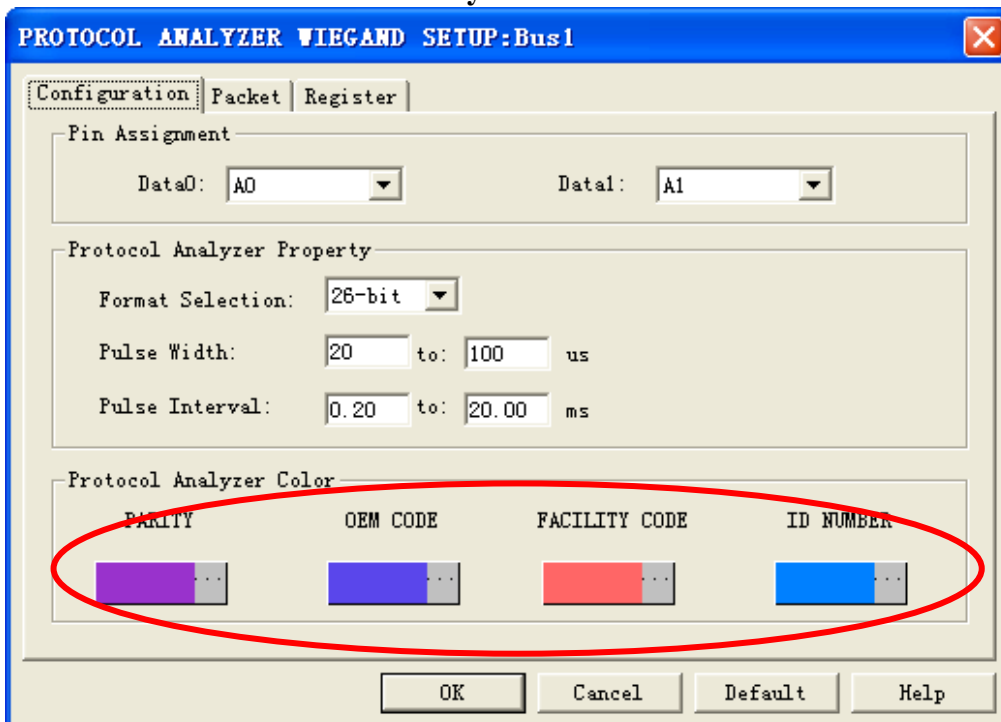




STEP 9. Set the Pulse Interval.



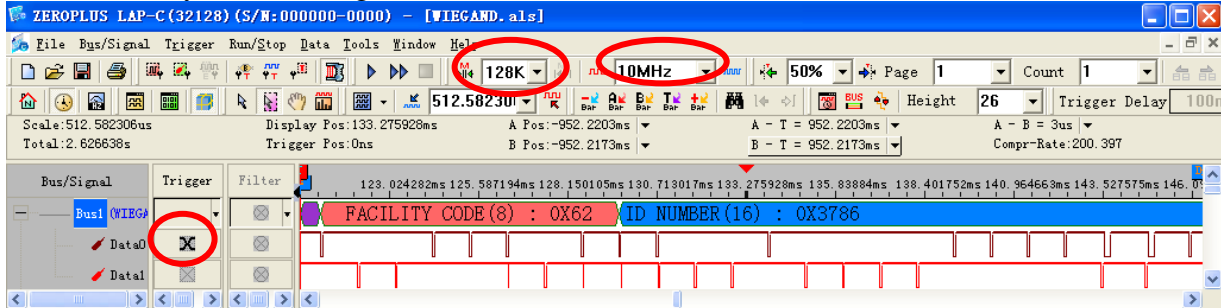
STEP 10. Set the Protocol Analyzer Color.





STEP 11. Following pictures show the completion of the protocol analyzer decoding and the packet list. The trigger condition is set as Either Edge; the memory depth is 128K; the internal sampling frequency is 10MHz.

Protocol Analyzer Decoding



Packet List

